



# African swine fever in Poland – update



**General Veterinary Inspectorate**

# Update on epizootic situation



## ASF cases in wild boar in 2018

- ✓ Since last PAFF – **206** new cases,
- ✓ Number of cases since 1 January - **12 July**– **1557**
- ✓ In total **2461** cases since the first one on 17 February 2014 till **12 July** 2018



## ASF outbreaks in pigs in 2018

- ✓ **58** outbreaks since **1 January 2018**
  - ✓ **44** new outbreaks since last PAFF
- In total **162** outbreaks since 2014 (till **12 July 2018**)



# Current situation in pigs



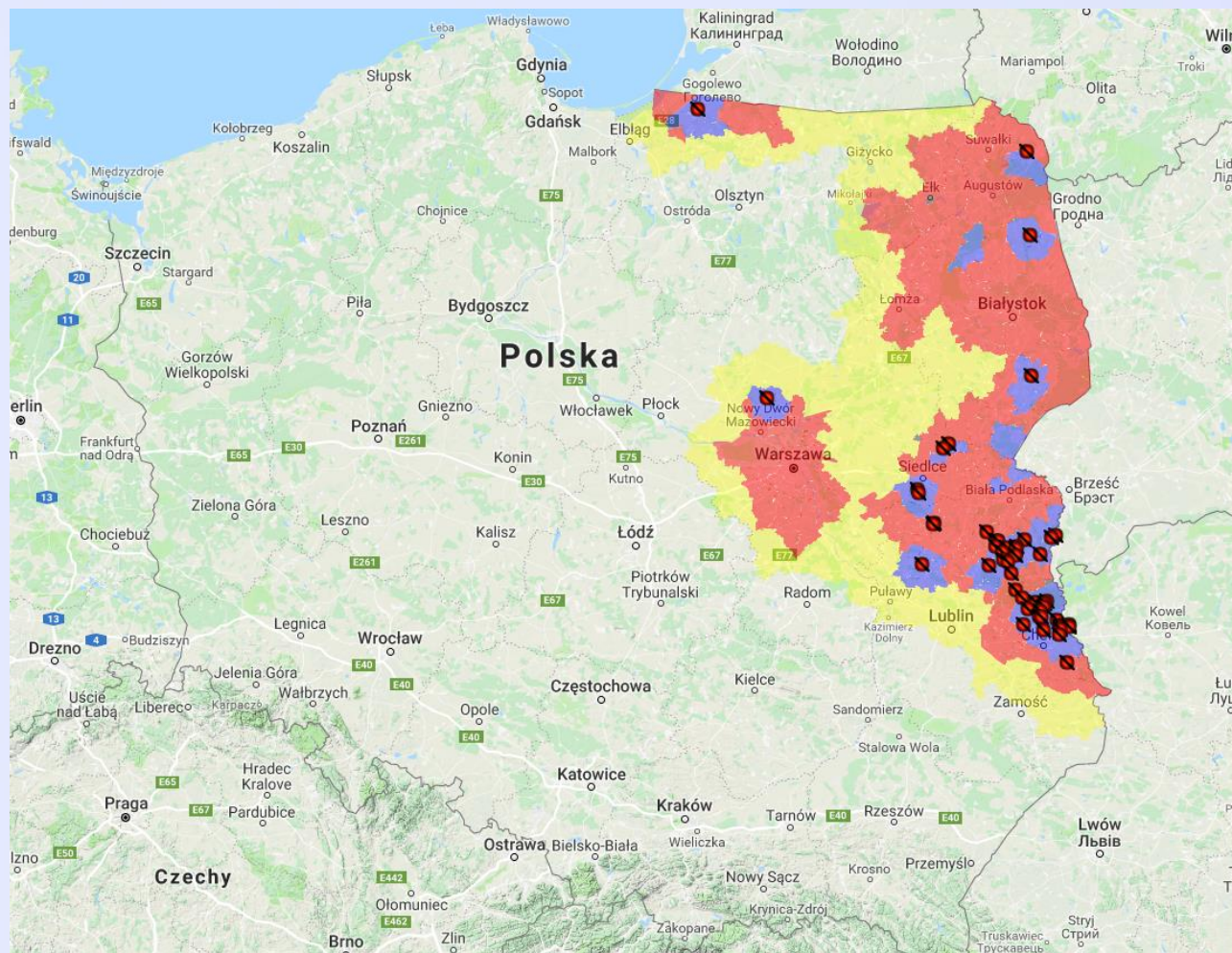
**The number of the outbreaks of ASF since last PAFF**

Lubelskie – 40

Podlaskie – 1

Mazowieckie – 2

Warmińsko-Mazurskie - 1



# Current situation in pigs



farms	nos. of outbreaks
Up to 10 pigs	14
Up to 50 pigs	15
Up to 100 pigs	3
Up to 500 pigs	7
Over 500 pigs	5

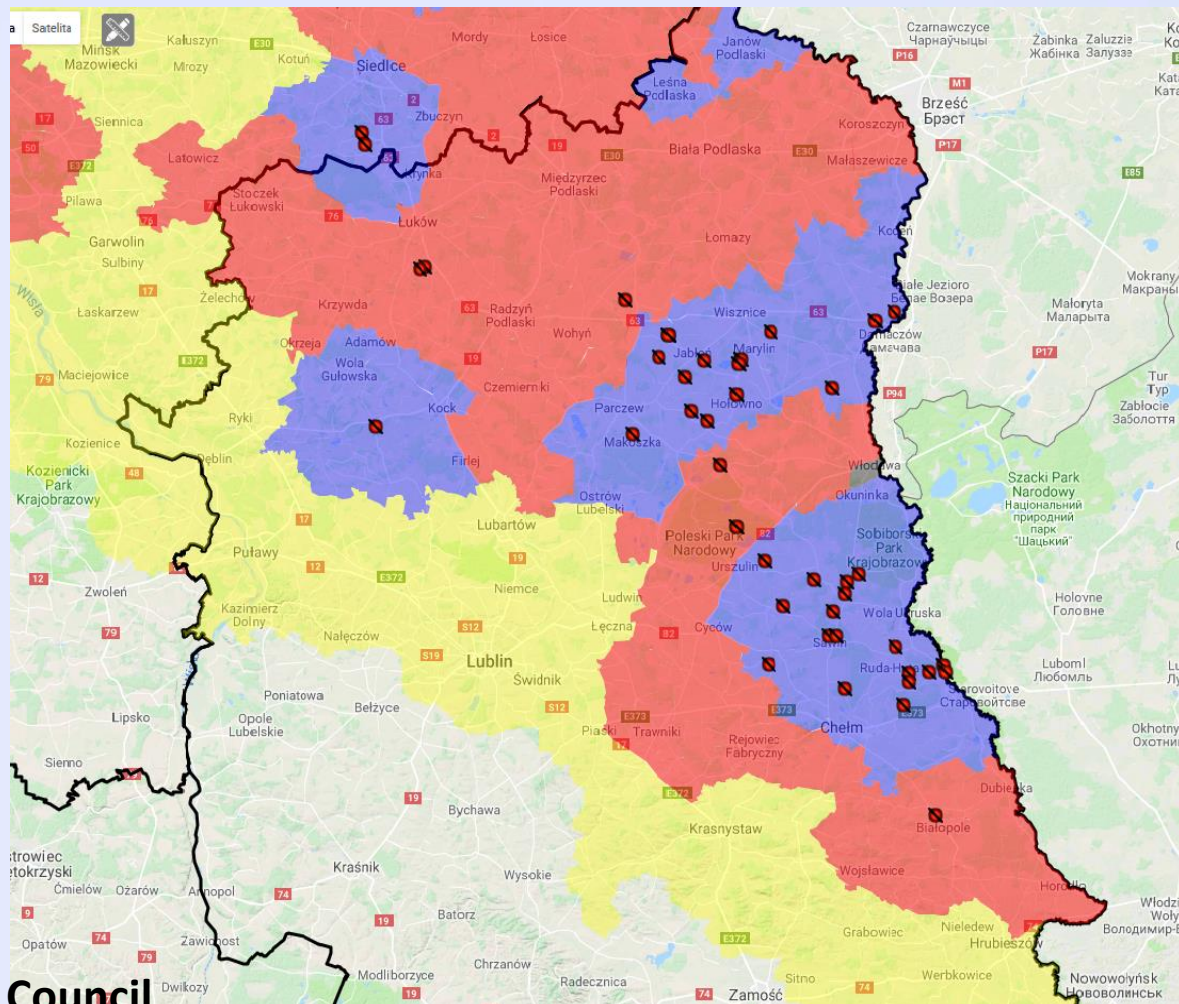


# Current situation in pigs



**Lubelskie Region – 40 outbreaks**

**Chełmski district – 18 outbreaks**  
**Parczewski district – 13 outbreaks**  
**Radzyński district – 2 outbreaks**  
**Bialski district – 4 outbreaks**  
**Włodawski district – 3 outbreaks**



**The measures according to directive Council 2002/60/EC have been implemented.**

# Current situation in pigs



## 5 outbreaks in farms over 500 swine

**Outbreak no.121** – 1151 swine (911 fattening pigs and 230 piglets); farm next to the forest;

**Outbreak no.128** – 1140 swine (40 weaners, 391 piglets, 267 fattening pigs, 80 sows and 2 boars); there are many cases of ASF in wild boars around outbreak

**Outbreak no. 140** – 1240 piglets; there are cases of ASF in wild boars around outbreak

**Outbreak no. 141** – 591 swine (190 weaners, 221 piglets, 123 fattening pigs, 55 sows and 2 boars); there are cases of ASF in wild boars around outbreak

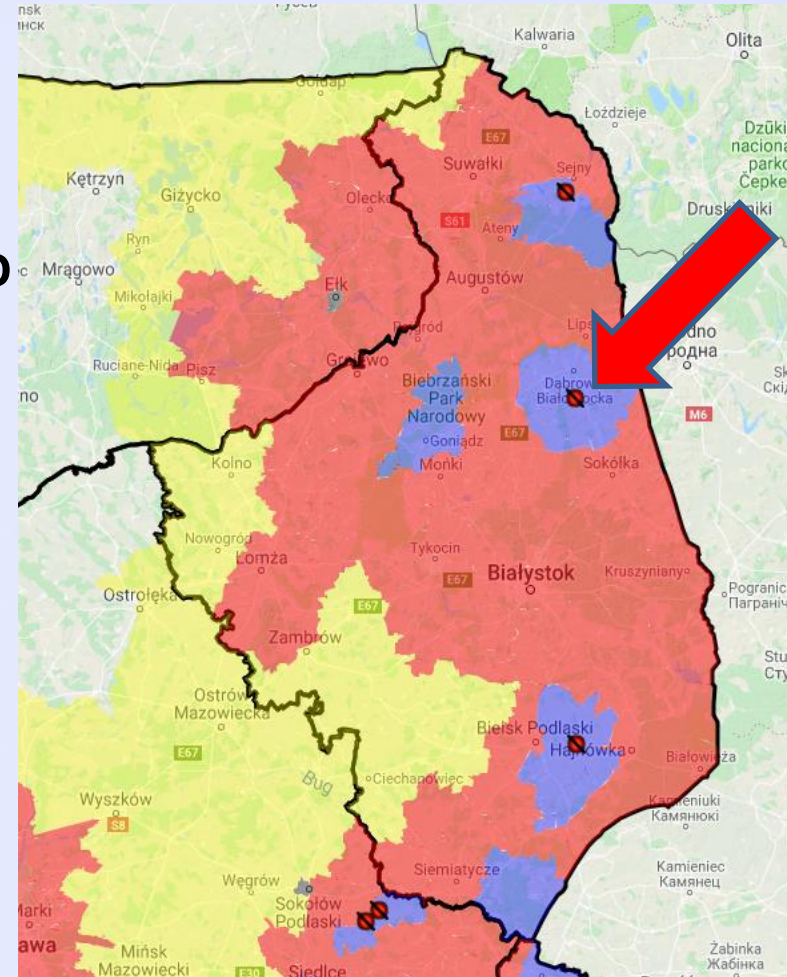
**Outbreak no. 162** – 1825 fattening pigs; secondary outbreak to no. 140

# Current situation in pigs



## Podlaskie region

- in municipality of Dabrowa Białostocka, sokólski district,
- in the area listed in Part III of the Annex to CID 2014/709/EU:
- The number of pigs kept at the holding – 81;
- Confirmation on 18.06;
- Killing and disposal – 20.06.
  
- The measures according to directive Council 2002/60/EC have been implemented.



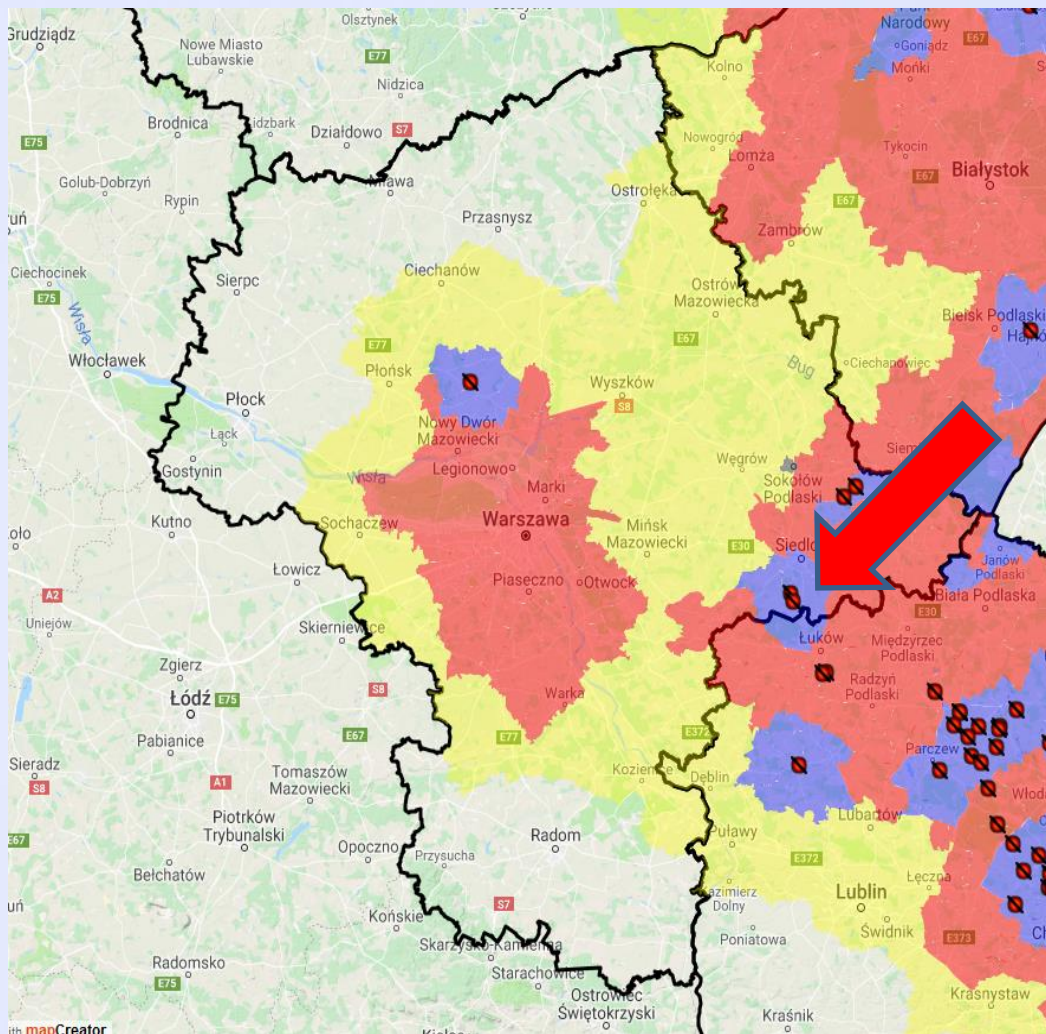


# Current situation in pigs



## Mazowieckie region – 2 outbreaks

- in municipality of Wiśniew, siedlecki district,
- in the area listed in Part III of the Annex to CID 2014/709/EU:
- The number of pigs kept at the holding – 10 and 462
- Confirmation on 28.06 and 7.07.2018
- Killing and disposal – 28.06 and 7.07.2018
- The measures according to directive Council 2002/60/EC have been implemented.



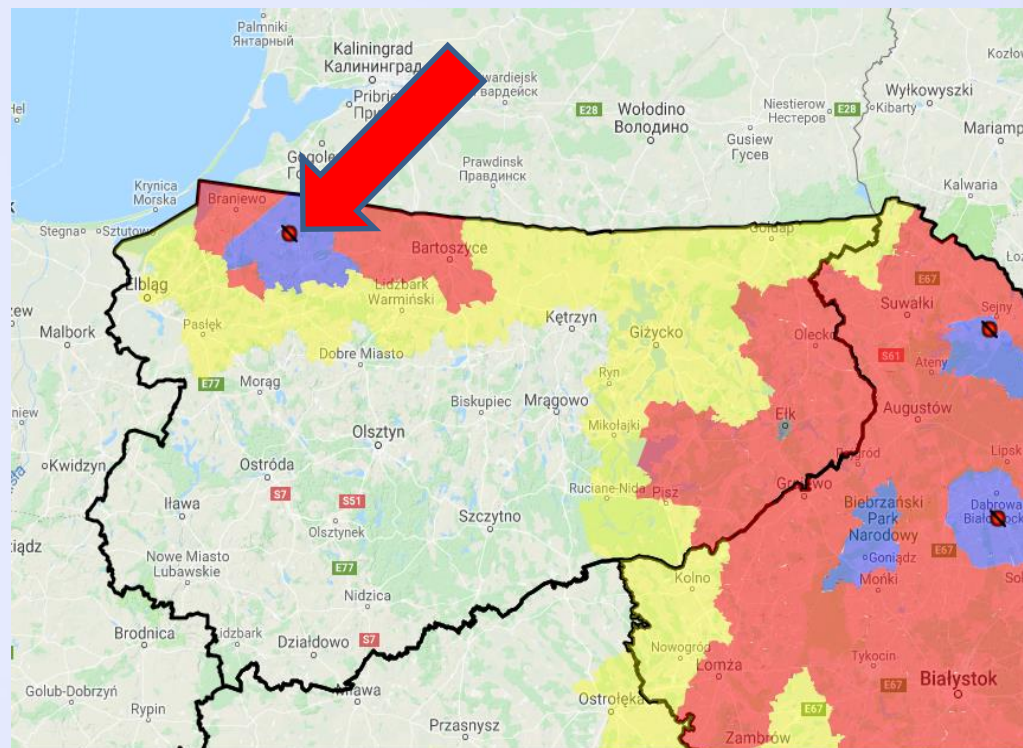


# Current situation in pigs



## Warmińsko-Mazurskie Region

- in municipality of Pieniężno, braniewski district,
  - in the area listed in Part III of the Annex to CID 2014/709/EU:
  - The number of pigs kept at the holding – 72
  - Confirmation on 22.06;
  - Killing and disposal – 23.06.
- 
- The measures according to directive Council 2002/60/EC have been implemented.



# Current situation in pigs



outbreak number	municipality	district	region	CID 2014/709/EU	The number of pigs kept at the holding	confirmation	killing and disposal
118 (14/2018)	Ruda Huta	chełmski	lubelskie	part II	10	12.06.2018	12.06.2018
119 (15/2018)	Ruda Huta	chełmski	lubelskie	part II	2	13.06.2018	14.06.2018
120 (16/2018)	Sawin	chełmski	lubelskie	part II	2	15.06.2018	15.06.2018
121 (17/2018)	Dorohusk	chełmski	lubelskie	part II	1151	15.06.2018	16.06.2018
122 (18/2018)	Jabłoń	parczewski	lubelskie	part II	9	15.06.2018	16.06.2018
123 (19/2018)	Dorohusk	chełmski	lubelskie	part II	28	16.06.2018	16.06.2018
124 (20/2018)	Sawin	chełmski	lubelskie	part II	9	17.06.2018	16.06.2018
125 (21/2018)	Dąbrowa Białostocka	sokólski	podlaskie	part II	81	18.06.2018	20.06.2018
126 (22/2018)	Urszulin	włodawski	lubelskie	part II	4	19.06.2018	19.06.2018
127 (23/2018)	Sławatycze	białski	lubelskie	part II	1	19.06.2018	19.06.2018
128 (24/2018)	Jabłoń	parczewski	lubelskie	part II	1140	19.06.2018	20-21.06.2018
129 (25/2018)	Ruda Huta	chełmski	lubelskie	part II	7	19.06.2018	20.06.2018
130 (26/2018)	Dębowa Kłoda	parczewski	lubelskie	part II	400	19.06.2018	21-22.06.2018
131 (27/2018)	Sosnówka	białski	lubelskie	part II	33	20.06.2018	21.06.2018
132 (28/2018)	Sawin	chełmski	lubelskie	part II	1	20.06.2018	21.06.2018
133 (29/2018)	Sławatycze	białski	lubelskie	part II	20	22.06.2018	22.06.2018

# Current situation in pigs



133 (29/2018)	Sławatycze	bialski	lubelskie	part II	20	22.06.2018	22.06.2018
134 (30/2018)	Pieniężno	braniewski	warmińsko - mazurskie	part II	27	22.06.2018	23.06.2018
135 (31/2018)	Dorohusk	chełmski	lubelskie	part III	79	22.06.2018	23.06.2018
136 (32/2018)	Hanna	włodawski	lubelskie	part II	154	23.06.2018	23.06.2018
137 (33/2018)	Dorohusk	chełmski	lubelskie	part II	292	22.06.2018	23.06.2018
138 (34/2018)	Sosnówka	bialski	lubelskie	part III	34	23.06.2018	23.06.2018
139 (35/2018)	Podedwórze	parczewski	lubelskie	part III	352	23.06.2018	26-27.06.2018
140 (36/2018)	Dębowa Kłoda	parczewski	lubelskie	part III	1240	24.06.2018	25-26.06.2018
141 (37/2018)	Jabłoń	parczewski	lubelskie	part II	591	24.06.2018	27-28.06.2018
142 (38/2018)	Dębowa Kłoda	parczewski	lubelskie	part II	16	26.06.2018	28.06.2018
143 (39/2018)	Podedwórze	parczewski	lubelskie	part III	25	26.06.2018	28.06.2018
144 (40/2018)	Dorohusk	chełmaki	lubelskie	part III	1	26.06.2018	28.06.2018
145 (41/2018)	Wiśniew	siedlecki	mazowieckie	part II	10	28.06.2018	28.06.2018
146 (42/2018)	Białopole	chełmski	lubelskie	part II	2	29.06.2018	30.06.2018
147 (43/2018)	Białopole	chełmski	lubelskie	part II	2	28.06.2018	30.06.2018
148 (44/2018)	Chełm	chełmski	lubelskie	part III	11	02.07.2018	02.07.2018
149 (45/2018)	Dorohusk	chełmski	lubelskie	part III	4	02.07.2018	02.07.2018
150 (46/2018)	Dorohusk	chełmski	lubelskie	part III	4	02.07.2018	02.07.2018
151 (47/2018)	Ulan Majorat	radzyński	lubelskie	part II	43	03.07.2018	03.07.2018
152 (48/2018)	Sawin	chełmski	lubelskie	part III	14	03.07.2018	03.07.2018
153 (49/2018)	Podedwórze	parczewski	lubelskie	part III	50	03.07.2018	03.07.2018
154 (50/2018)	Dawidy	parczewski	lubelskie	part III	107	06.07.2018	06.07.2018
155 (51/2018)	Ruda Opalin	chełmski	lubelskie	part III	18	06.07.2018	06.07.2018
156 (52/2018)	Olchowiec	chełmski	lubelskie	part III	43	06.07.2018	06.07.2018
157 (53/2018)	Wisniew	siedlecki	mazowieckie	part III	462	07.07.2018	07.07.2018
158 (54/2018)	Urszulin	włodawski	lubelskie	part III	2	08.07.2018	09.07.2018
159 (55/2018)	Ulan Majorat	radzyński	lubelskie	part II	32	08.07.2018	09.07.2018
160 (56/2018)	Dorohusk	chełmski	lubelskie	part III	22	08.07.2018	06.07.2018
161 (57/2018)	Jabłoń	parczewski	lubelskie	part III	6	08.07.2018	09.07.2018
162 (58/2018)	Sosnowica	parczewski	lubelskie	part II	1825	10.07.2018	11-12.07.2018





Sale of pigs from holdings where the outbreaks  
were confirmed

Distribution only on the territory of Poland

# ASF outbreak No. 111 (22.05.)



- 84 pigs moved to slaughterhouse from holding were ASFV was confirmed
- Received 42816,5 kg of meat of the batch of 476 pigs
- Meat was sold to other Polish est.
- Food seized at the est. and food placed on the market have been disposed of

# ASF outbreak No. 113 (05.06.)



- 200 pigs moved to slaughterhouse from holding were ASFV was confirmed
- All meat derived from pigs were sold as fresh in retail chain owned by the meat producer
- No meat left to withdraw from the market
- Distribution only on the territory of Poland



# ASF outbreak No. 113 (05.06.)



- 6 pigs moved to different slaughterhouse from holding were ASFV was confirmed
- Batch of 215 pigs slaughtered and derived 20763 kg of meat, 10650 kg were sold into retail as fresh, 5883 kg sold to other est.
- Meat present in the plant was seized
- Meat which was not sold, was sent to the rendering plant
- Distribution only on the territory of Poland

# ASF outbreak No. 115



- 100 pigs moved to slaughterhouse from holding were ASFV was confirmed
- 9779 kg of meat was derived + 220 kg offals
- Meat was sold as fresh meat with short self-life, no meat left on the market to withdraw
- Meat present in the plant was seized (app. 350 kg)
- Distribution only on the territory of Poland

# ASF outbreak No. 125



- 14 pigs moved to slaughterhouse from holding were ASFV was confirmed
- 1083 kg of meat was derived and sold to PP of the same branch, 327 kg of fresh meat was seized
- Rest of the meat was processed and sold as meat products into retail
- 36 kg of meat products were seized at the est.
- Distribution only on the territory of Poland



# ASF outbreak No. 131, 138



- 16 pigs moved to slaughterhouse from holding were ASFV was confirmed
- Derived meat was cut in the same est. during the next 3 production days, producing in total 5520 kg, out of which 2170 kg of meat products were derived
- 3523 kg of fresh meat was sold into retail
- No meat or meat products left on the market to withdraw
- Distribution only on the territory of Poland

# ASF outbreak No. 136



- 148 pigs moved to slaughterhouse from holding were ASFV was confirmed
- 15186 kg of meat derived + 630 kg of offals
- Meat after cut was sold as fresh into FBOs retail chain
- No meat left to withdraw
- Distribution only on the territory of Poland

# ASF outbreak No. 141



- 51 pigs moved to slaughterhouse from holding were ASFV was confirmed
- Investigation on a pending
- CVO asked National Veterinary Institute for opinion on the test results (antibodies (+) and ASFV(-))

ASF outbreak No. 156 – ...



Investigation on-going



Areas which should be reverted from Part III of the Annex to CID  
2014/709 to Part II.



- municipalities: Mielnik and Nurzec - Stacja in Podlaskie Region
- municipality Leśna Podlaska in Lubelskie Region

# Podlaskie Region –Nurzec -Stacja and Mielnik



## Pigs

**no positive results**

**sampled I-V 2018**

powiat	community	number of live pigs sampled	number of death pigs sampled
siemiatycki	Mielnik	35	1
	Nurzec - Stacja	283	114
	total	318	115

## Wild boar

powiat	community	number of dead wild boars sampled	number of positiv results
	Mielnik	3	3
	Nurzec - Stacja	1	1
	total	4	4

powiat	community	number of shot wild boars sampled	number of positiv results
	Mielnik	27	0
	Nurzec - Stacja	10	1
	total	37	1

# Lubelskie Region – Leśna Podlaska



## Pigs

**no positive results**

**sampled I-V 2018**

poviat	community	number of live pigs sampled	number of death pigs sampled
bialski	Leśna Podlaska	1288	0

## Wild boar

poviat	community	number of dead wild boars sampled	number of positiv results
bialski	Leśna Podlaska	4	1

poviat	community	number of shot wild boars sampled	number of positiv results
bialski	Leśna Podlaska	12	0

# Outcome of official controls in relation to biosecurity measures in the holdings in the area of Part III



Voivodeship (województwo)	District (powiat)	Municipality (gmina)	Total number of pigs on 9 July 2018	Number of check of pigs holding by Veterinary Inspection for 2017 - 31 May 2018, including holdings where no pigs were kept during an inspection.	Number of suspended pigs holdings due to biosecurity measures non-compliances for 2017 - 31 March 2018.
Podlaskie	siemiatycki	Nurzec - Stacja	9648	26	22
		Mielnik	59	53	9
Lubelskie	bialski	Leśna Podlaska	10841	21	15
<b>In total</b>			<b>20548</b>	<b>100</b>	<b>46</b>



# Number of samples collected from wild boar and pigs within the framework of the national surveillance programme in whole territory of Poland



Year	2011 - 2013	2014	2015	2016	2017	1-05.07.2018.	
							<b>Total number of tested samples</b>
<b>Number of samples collected from wild boar</b>	<b>13 063</b>	<b>15 881</b>	<b>13 356</b>	<b>14 965</b>	<b>24 698</b>	<b>19 420</b>	<b>101 383</b>
<b>Number of samples collected from pigs</b>	<b>2 124</b>	<b>23 629</b>	<b>15 092</b>	<b>85 580</b>	<b>179 139</b>	<b>236 580</b>	<b>542 144</b>

# Passive surveillance



Examination of WB found dead, killed in road accidents and animals showing clinical signs before hunting

Year	Part II and III (infected)					
	Found dead			Car accidents		
	tested	+	%	tested	+	%
2014	115	46	40%	68	0	0
2015	130	67	51%	53	0	0
2016	149	63	42%	95	3	3.15
2017	1241	879	70.8%	137	6	4.38
2018*	3232	2455	75.95%	221	44	19.9%

\* Until the 05.07.2018.

# Active surveillance - WB hunted



Year	Part II and III (infected)		
	tested	+	prevalence
2015	3387	14	0.41%
2016	4221	24	0.56%
2017	6015	117	1.95%
2018	6185	110	1.77%

\* Until the 05.07.2018.



Thank you for your attention