



Avian Influenza

2021

The Netherlands

› Paul Leijs DVM MBA

17 June 2021

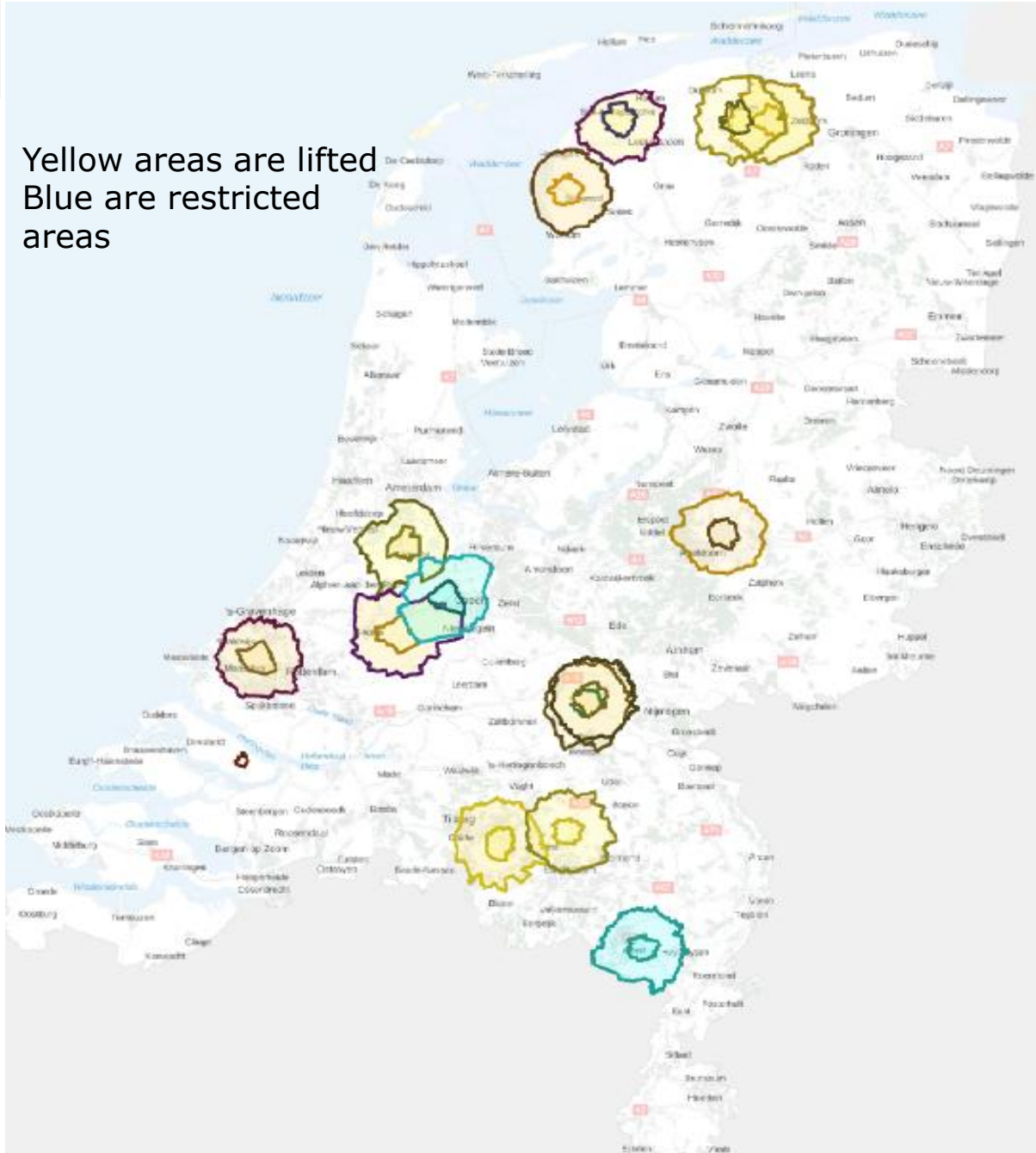
Update HPAI in the Netherlands since last presentation



Groen wilde vogels DWHC
Rood Wilde vogels NVWA



Yellow areas are lifted
Blue are restricted
areas

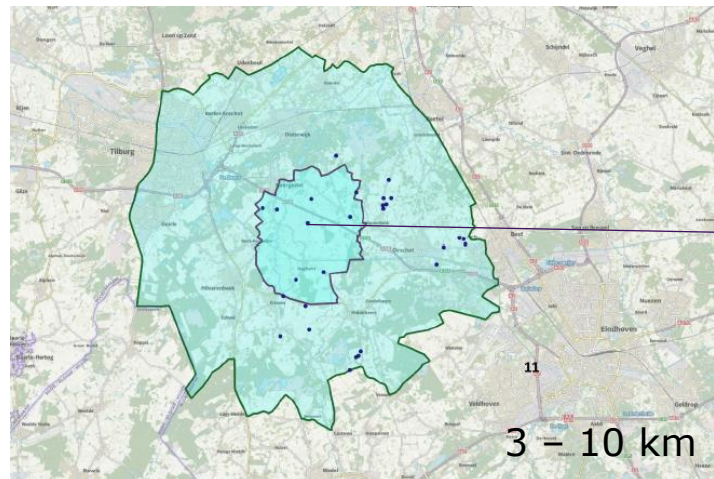


Moergestel



4 Januari

- Notification of Avian Influenza in a turkey farm
On the 3rd of January slight increase of average amount of dead animals. Private veterinarian did not find clear signs took EW samples. But in the afternoon sudden increase of mortality and sudden silence in one stable
 - 19.000 animals 18-19 weeks old
 - 5 stables, 2 empty.
- Competent Authority clinical inspection samples



Poultry farms within	
1 km	0
3 km	6
10 km	22

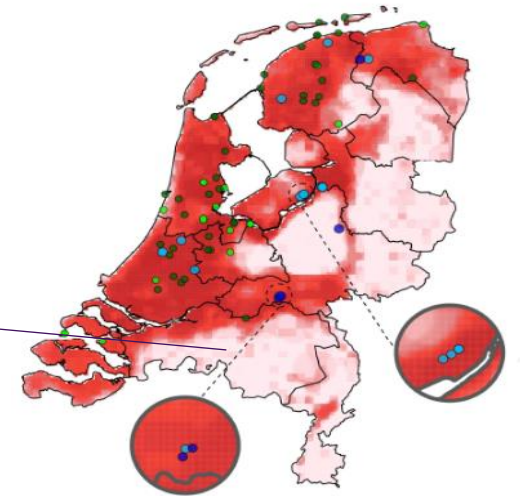
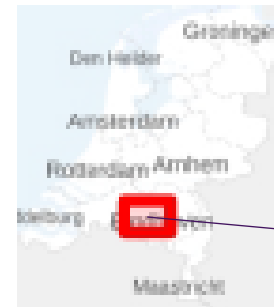


Moergestel



5 January

- Confirmation by Nat ref lab H5
- Designation restriction zone 3 -10 km
- Culling animals of infected farm
- Epidemiological research
 - contact farm
 - partial removal of turkeys for slaughter 29-12-2020
 - increased water level meadows
- Screening 3 km



6 January

- removing dead animals and C&S
- H5N8

Zaandam



4 February

Notification dead hens on petting zoo

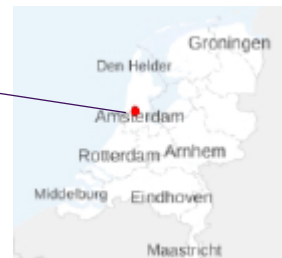
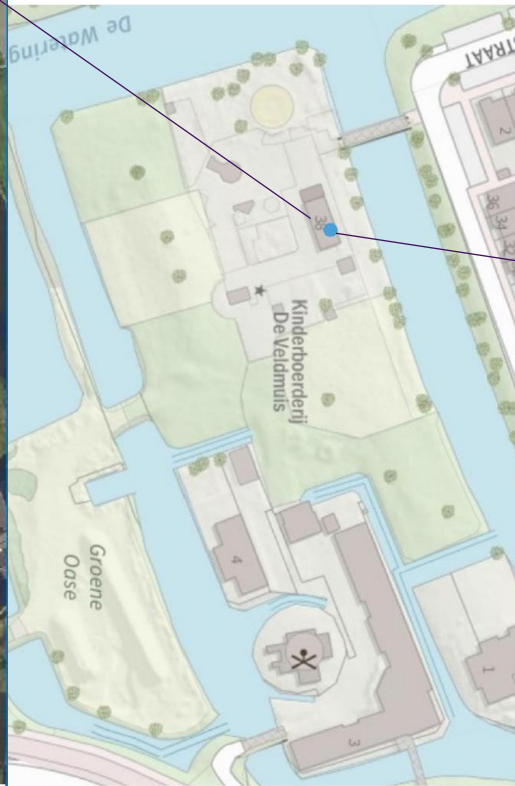
45 chickens
4 peacocks

5 February

H5 found in dead hens

6 February

All AI susceptible animals are culled
Pigs are sampled
Premises C&S



Poultry farms within	
1 km	0
3 km	0
10 km	0

Sint Oedenrode



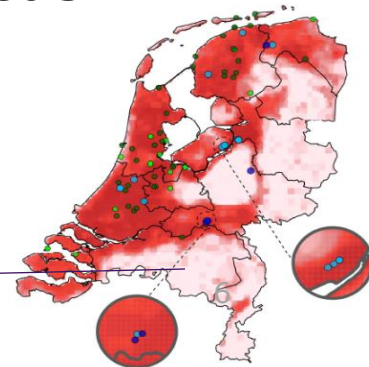
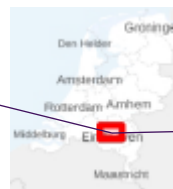
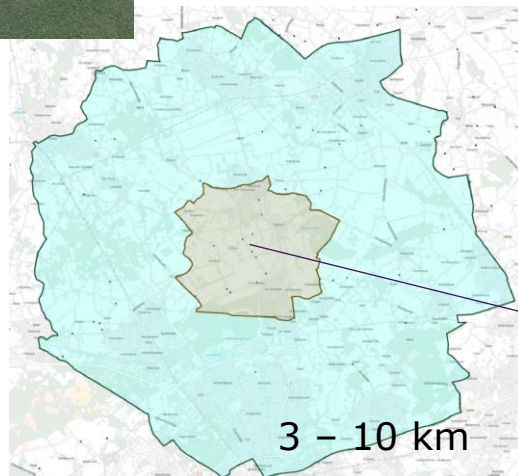
19 February

- Notification of Avian Influenza 'Yesterday' slightly increase of dead animals no other signs. This day increase and clear clinical signs within the herd.
 - 1 stable with 22.000 laying hens
 - 1 stable with 13.000 laying hens
 - 1 stable with 780 pigs
- Competent Authority clinical inspection samples

20 February

- Confirmation by Nat ref lab H5
- Designation restriction zone 3 -10 km
- Culling animals of infected farm and 2 farms in 1 km zone. 1 farm is empty
- removing dead animals and C&S
- Sampling pigs
- Epidemiological research
 - contact farm
- Screening 3 km zone

Poultry farms within	
1 km	3
3 km	7
10 km	26



Weert



21 May

- Notification of Avian Influenza after slightly increase of dead drastic increase of dead turkeys all in only one stable
- Turkey farm with 6 stables
 - 2 stable empty
 - 13.000 turkeys divided over 4 stables
- Competent Authority clinical inspection samples

21 May

- Confirmation by Nat ref lab H5
- Designation restriction zone 3 -10 km
- Culling animals of infected farm and the other poultry farms in the 1 km zone.

22 May

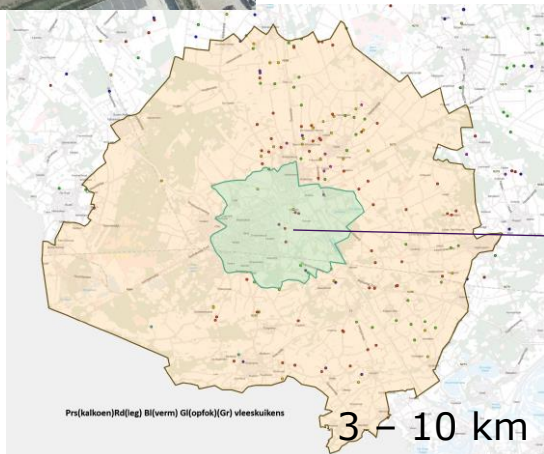
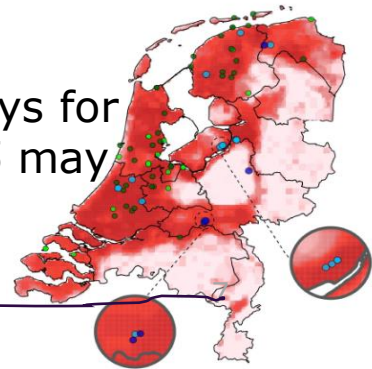
- removing dead animals and C&S
- Sampling pigs
- Epidemiological research

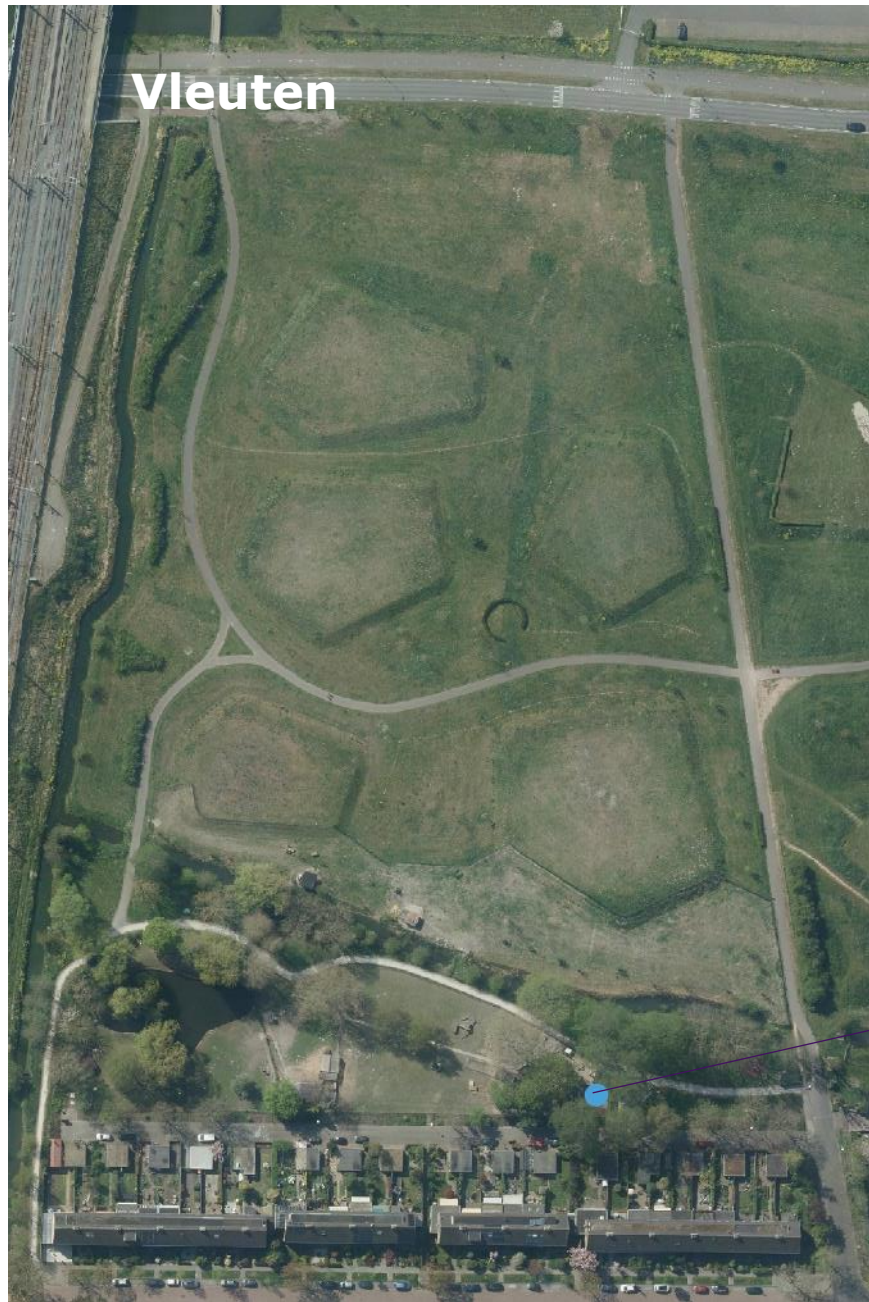
Poultry farms within	
1 km	1
3 km	7
10 km	128



23 May

- 3 contact farms
- partial removal of turkeys for slaughter 13, 14 and 15 may
- Screening 3 km zone
- Type of H5 confirmed N8





9 June

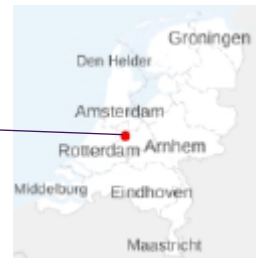
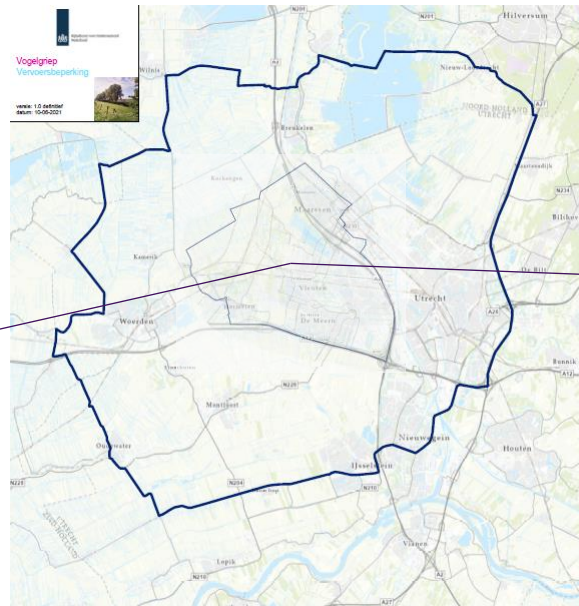
HPAI notification via Early Warning
Animal meadow for disabled people
56 AI susceptible animals

10 June

Competent Authority clinical inspection
samples

11 June

Confirmation by Nat ref lab H5
All AI susceptible animals are
culled
Premises C&S



Poultry farms within	
1 km	0
3 km	0
10 km	0



Considerations

- › It has never been seen before in the Netherlands that so many barnacle geese died in this period of the year.
- › There has been an extended period of low temperature for this season
- › A New susceptible population of juvenile birds





Thank you for your attention