



Liberté • Égalité • Fraternité
RÉPUBLIQUE FRANÇAISE

MINISTÈRE
DE L'AGRICULTURE
DE L'AGROALIMENTAIRE
ET DE LA FORÊT

BTV8 situation in France

4-5 October 2016

agriculture
gouv.fr
alimentation
gouv.fr





Liberté • Égalité • Fraternité
RÉPUBLIQUE FRANÇAISE

MINISTÈRE
DE L'AGRICULTURE
DE L'AGROALIMENTAIRE
ET DE LA FORÊT

Summary

- Epidemiological situation
- Surveillance
 - Focus on last zoning modification
- Vaccination
- Trade
- Corsica

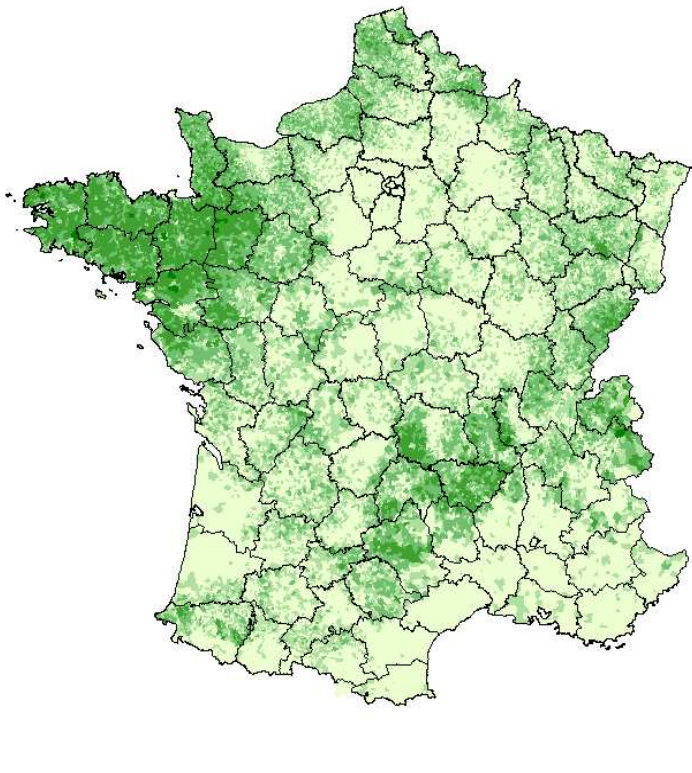
agriculture
gouv.fr
alimentation
gouv.fr



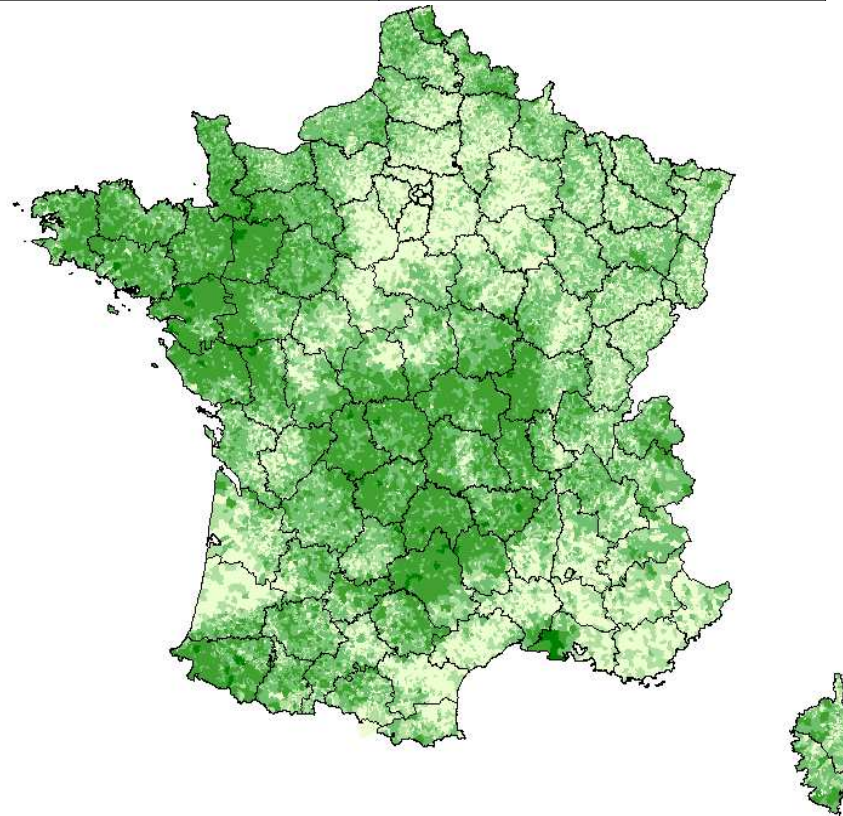
Répartition du cheptel bovin 2015

Données SIGAL

Nombre d'exploitations (disposant d'un n° EDE)	Nombre de troupeaux (ateliers dans SIGAL)	Nombre d'animaux (tous âges)
206 236	234 747	19 478 970



Laitier (32%)



Allaitant ou mixte (68%) 3

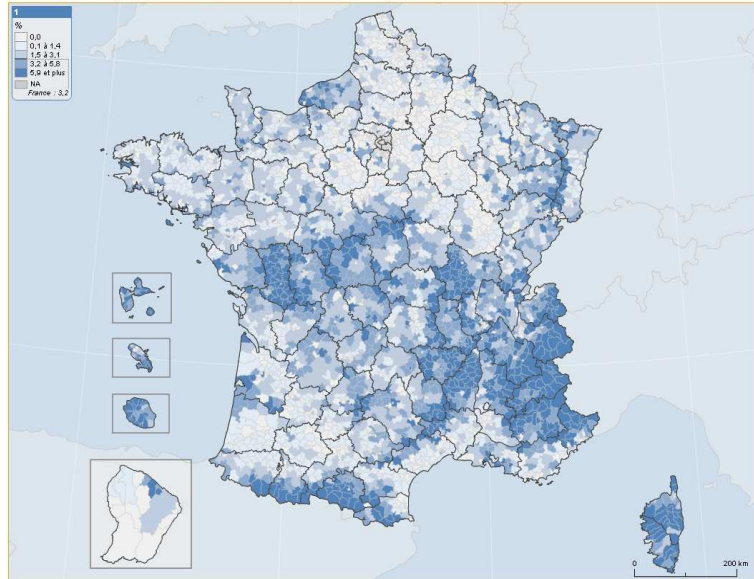
Répartition du cheptel ovins / caprins 2015

Données SIGAL

Espèce	Nombre de troupeaux	Nombre d'animaux de plus de 6 mois
Ovins	87 000	5 760 000
Caprins	28 000	1 040 000

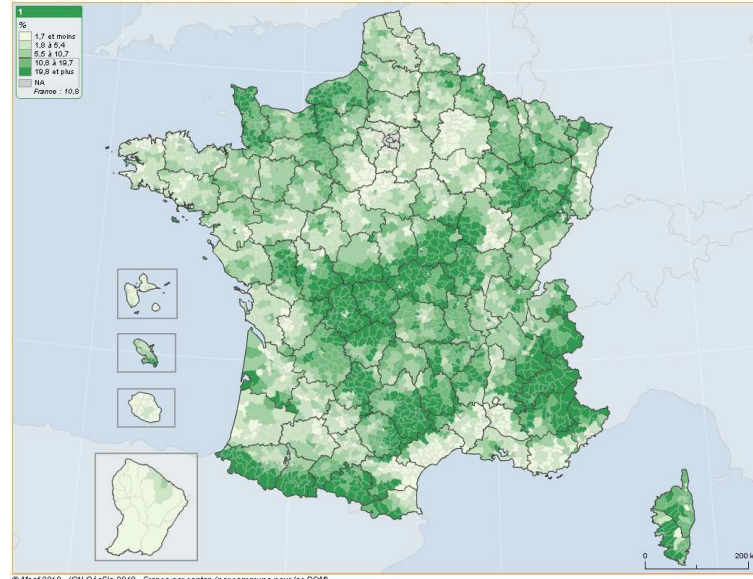
Cartographie (basée sur le recensement 2010)

part des exploitations ayant des chèvres en 2010 - source : Agreste - Recensement agricole 2010 et estimations pour les communes non diffusibles



Exploitations caprines

part des exploitations ayant des brebis en 2010 - source : Agreste - Recensement agricole 2010 et estimations pour les communes non diffusibles



Exploitations ovines

BTV epidemiological situation

- Continental France

- BTV-1 and 8 circulated between 2006 and 2010
- After several vaccination campaigns, Free status was recovered on 14/12/2012
- 11/09/2015 : a clinical suspicion on a ram is confirmed as BTV-8 infection
- 30/09/2016 : 402 BTV-8 outbreaks have been notified

- Corsica

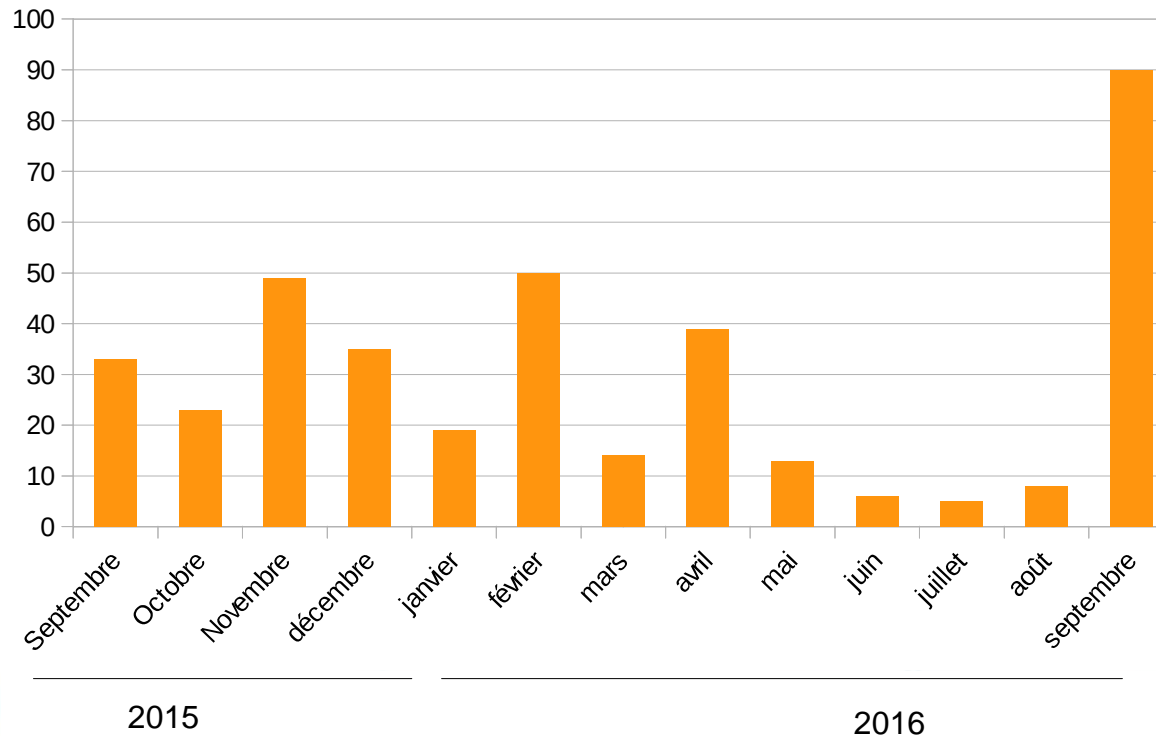
- Restriction zone for BTV 1-2-4-8-16
- No outbreak since June 2014 (BTV-1)



BTV epidemiological situation

- Continental France BTV-8 2015-2016

- Anses Opinion (2015-SA-0226) : resurgence from previous circulation
- Nb of outbreaks notified / month :





Liberté • Égalité • Fraternité
RÉPUBLIQUE FRANÇAISE

MINISTÈRE
DE L'AGRICULTURE
DE L'AGROALIMENTAIRE
ET DE LA FORÊT

BTV epidemiological situation

- Outbreaks from September 2015 to June 30th 2016

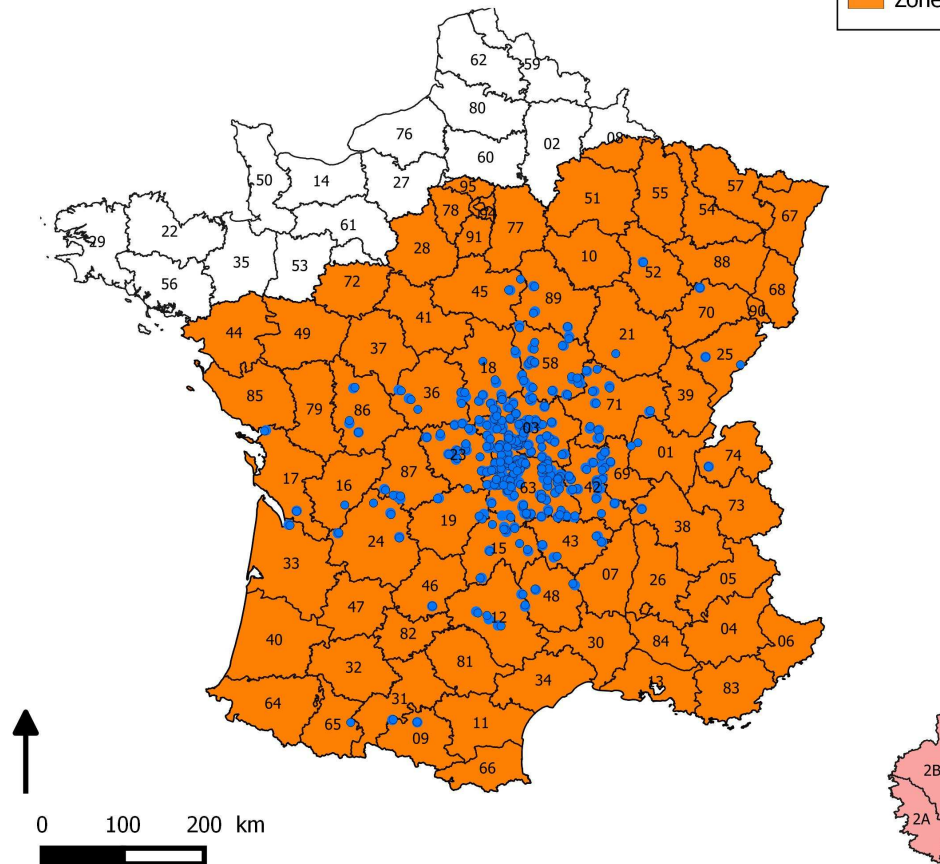
Situation au 24/06/2016

• Foyers confirmés de FCO

■ Zone réglementée FCO sérotype 8

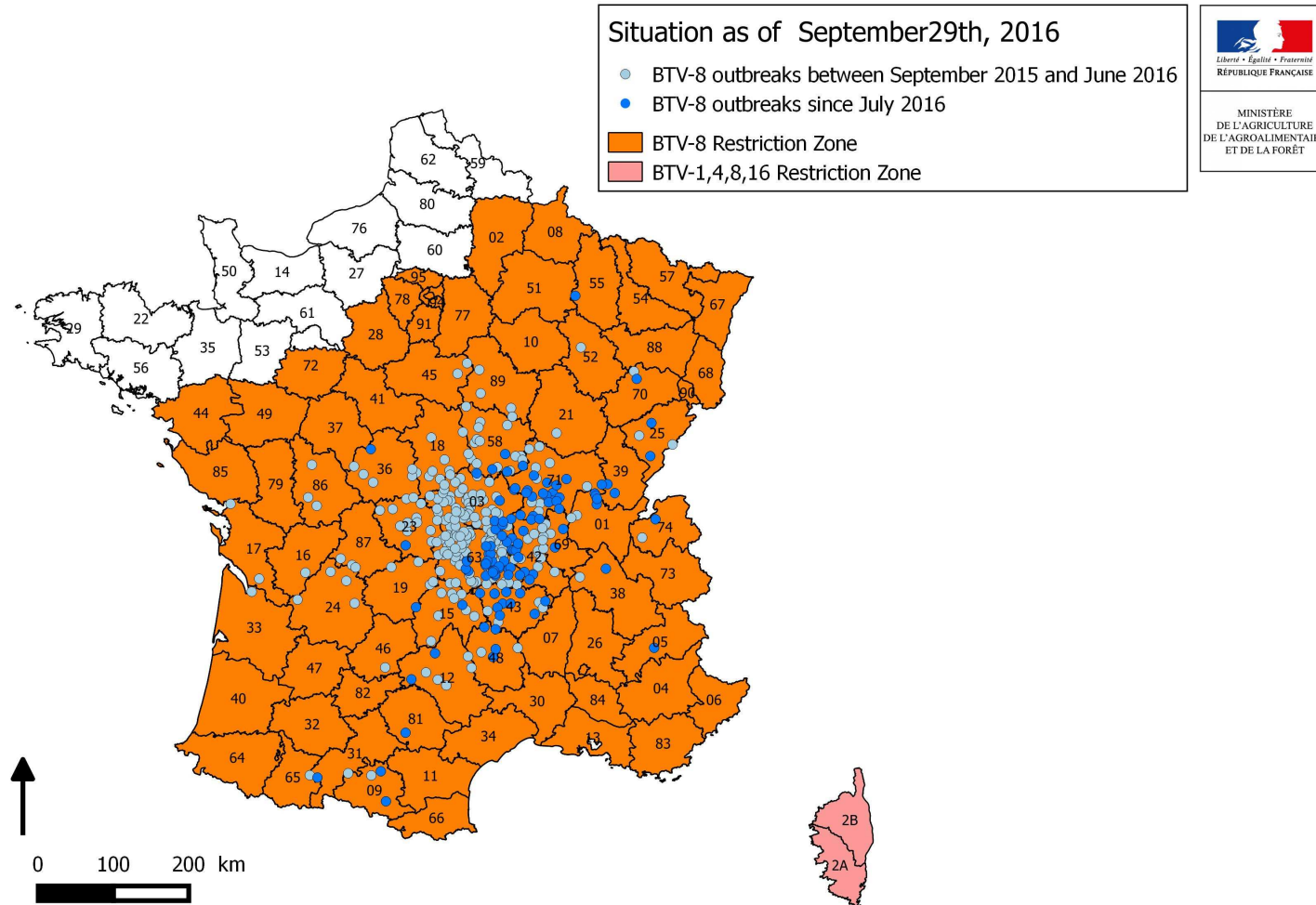


MINISTÈRE
DE L'AGRICULTURE
DE L'AGROALIMENTAIRE
ET DE LA FORÊT




BTV epidemiological situation

- Outbreaks from September 2015 to September 30th 2016



BTV epidemiological situation

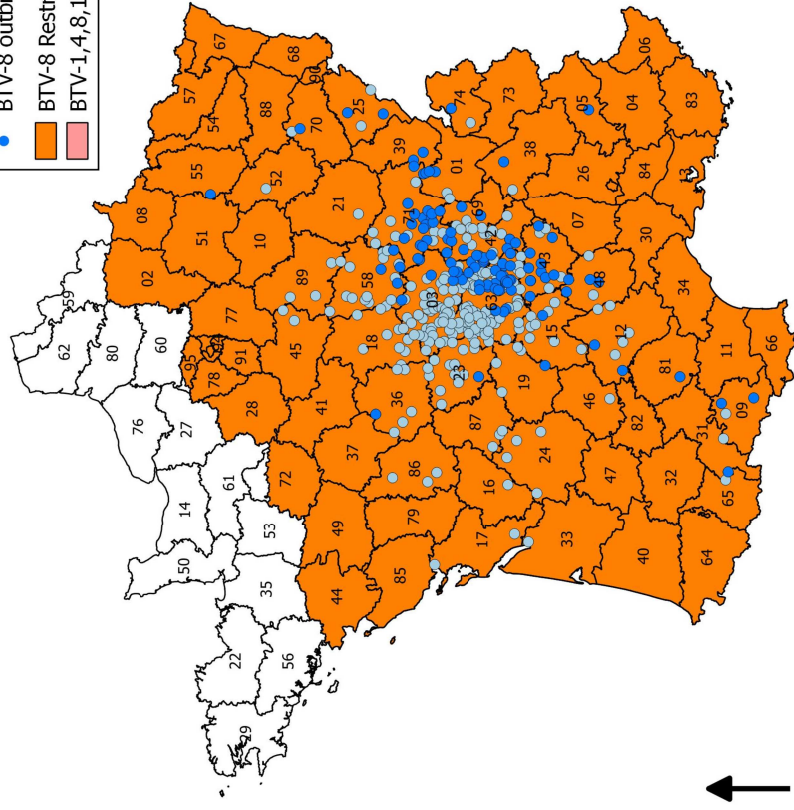
- Outbreaks from September 2015 to September 30th 2016



MINISTÈRE
DE L'AGRICULTURE
DE L'AGROALIMENTAIRE
ET DE LA FORÊT

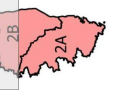
Situation as of September 29th, 2016

- BTV-8 outbreaks between September 2015 and June 2016
- BTV-8 outbreaks since July 2016
- BTV-8 Restriction Zone
- BTV-1,4,8,16 Restriction Zone



outbreaks notified during the 1st semester 2016 had low viral charge and are likely to be old infections from 2015 circulation

BTV-8 was isolated again from July 2016 on with high viral charge CT sup 35/36





BTV-8 surveillance components

- Passive clinical surveillance :
 - Ongoing
- Active surveillance
 - **Until september 2015** : freedom demonstration (failed to identify low level circulation)
 - **September-october 2015** : emergency national campaign to assess epidemiological situation
 - **January-April 2016** : demonstrating seasonally free zones
 - **August-November 2016** : assessing BTV-8 spread and demonstrating free status of North and North-West France
 - **Systematic testing prior exiting regulated zone** in some bilateral or national trade situation : most outbreaks detection source





Liberté • Égalité • Fraternité
RÉPUBLIQUE FRANÇAISE

MINISTÈRE
DE L'AGRICULTURE
DE L'AGROALIMENTAIRE
ET DE LA FORÊT

Outbreak detection circumstances

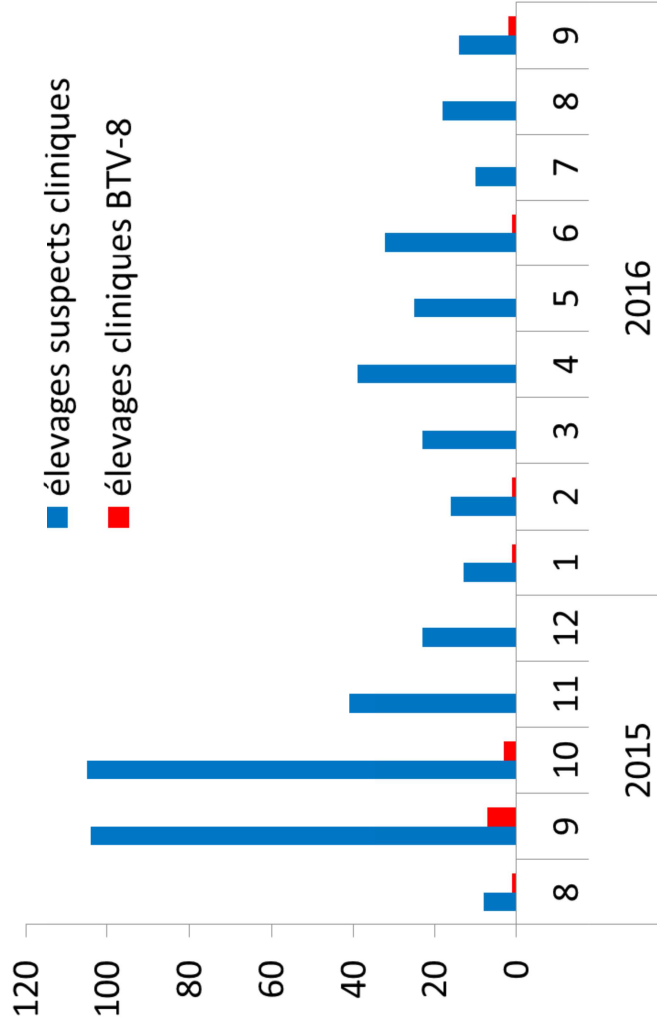
Clinical suspicions	16 outbreaks
Investigations around the first outbreak in Allier	11 outbreaks
Active surveillance : September to October 2015	27 outbreaks
Active surveillance : January to April 2016	21 outbreaks
Testing prior to exiting regulated zone	327 outbreaks
TOTAL	402 outbreaks

agriculture
gouv.fr
alimentation
gouv.fr

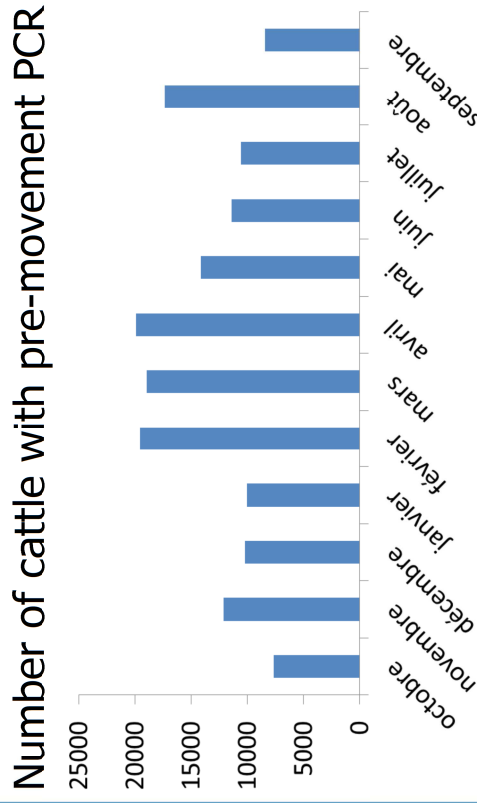


BTV-8 surveillance : Passive surveillance

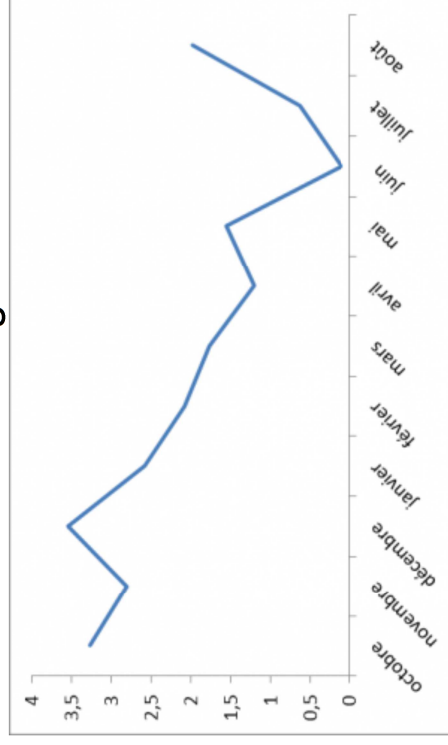
- 16 clinical suspicions positive for BTV8
- Since June, 65 farms held clinical suspicions (48 in cattle farms, 16 in sheep farm, 1 in cattle/sheep farm)



BTV-8 surveillance : Pre-movement tests



% of positive pre-movement tests amongst all tests between October 2015 and August 2016



Active surveillance : September 2015 - May 2016 spread assessment

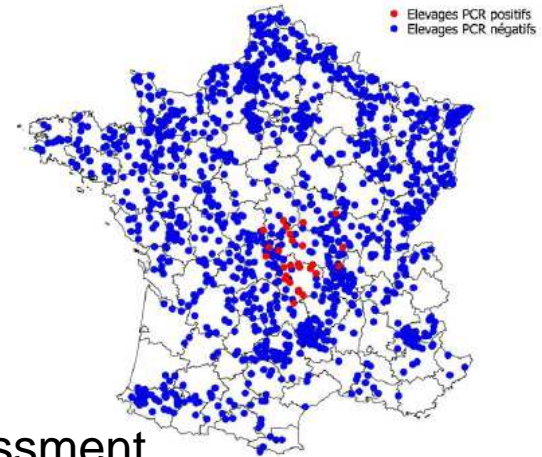
- Sept-Oct 2015 « Emergency campaign »

- 39 513 PCR in 1 338 herds
- 27 outbreaks notified

- Jan-May 2016

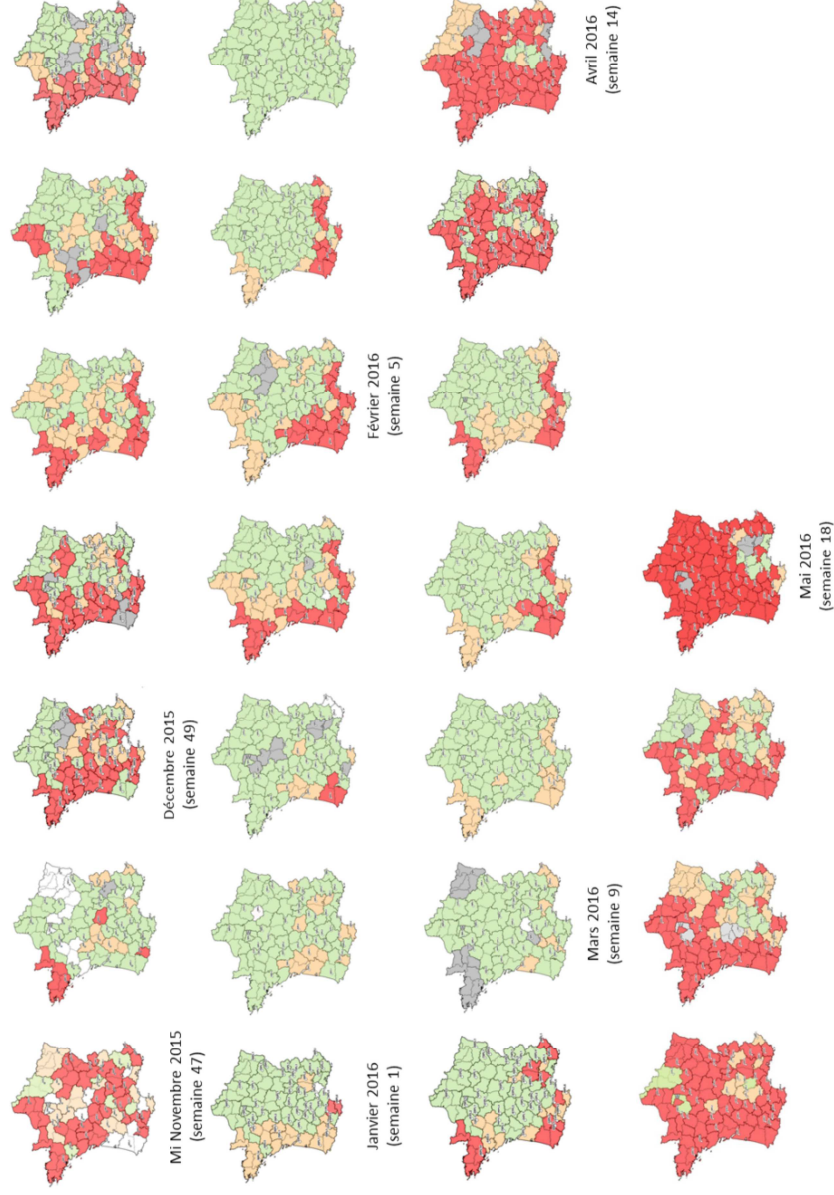
- Seasonally free of BTV zone
(vaccine shortage context)+ spread assessment

- 60-150 samples/*arrondissement*
=> 23 178 ELISA on 12-36 months old animals
- Vector surveillance network



Active surveillance : September 2015 - May 2016 spread assessment

- Vector activity november 2015 - May 2016





Liberté • Égalité • Fraternité
RÉPUBLIQUE FRANÇAISE

MINISTÈRE
DE L'AGRICULTURE
DE L'AGROALIMENTAIRE
ET DE LA FORÊT

Active surveillance : August-November 2016 spread assessment

- **Objectives**

- Detect BTV8 spread or circulation as soon as possible in the BTV8 free zone
- Meet UE's regulatory requirements in terms of surveillance

agriculture
gouv.fr
alimentation
gouv.fr





MINISTÈRE
DE L'AGRICULTURE
DE L'AGROALIMENTAIRE
ET DE LA FORÊT

Active surveillance : August-November 2016 spread assessment

- **Objectives**

- Detect BTV8 spread or circulation as soon as possible in the BTV8 free zone
- Meet UE's regulatory requirements in terms of surveillance

- **Monitoring principles**

- Monthly ELISA tests in non-vaccinated sentinel farms

33
départements

- All the departments of the BTV8 free zone
- All the neighbouring departments of the BTV8 free zone

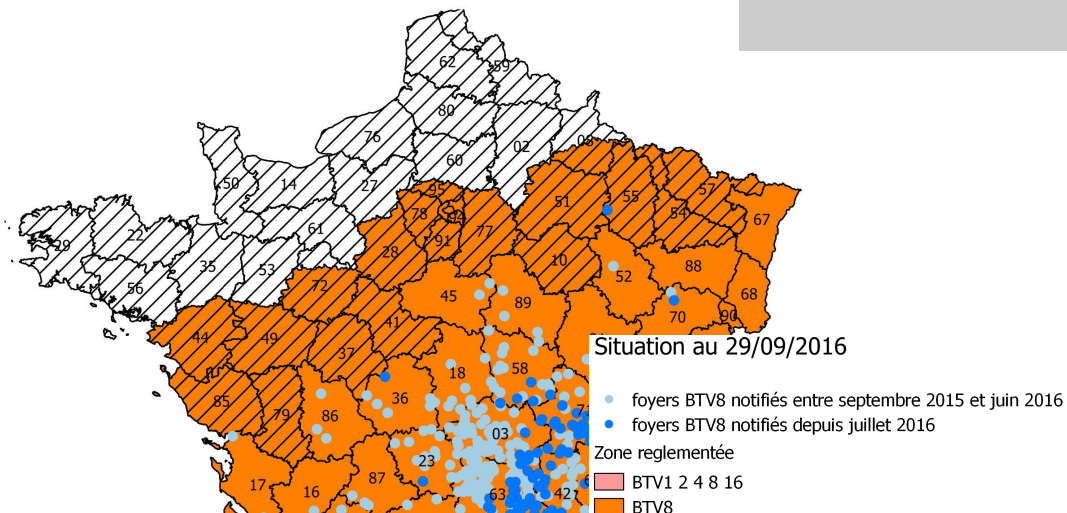
- Design prevalence : 2 %
- 180 animals 12 to 48 months old, not vaccinated
/ département / month



Active surveillance : August-November 2016 spread assessment

- Results**

	Day 0	Day 30
Number of departments	32/33	19/33
Number of negative ELISA	7260	1700
Number of positive ELISA	9 (7 negative PCR investigations, 2 still in progress)	0





Focus on last zoning evolution due to Meuse (55) outbreak

- A bovine left its birth farm (55) on september 13th
 - 1 year old, not vaccinated
 - Was brought to a market in Nièvre *Département* on the 13th
 - Was bought by a trader in Puy-de-Dôme *Département* on the same day and sampled on the same evening in prevision to a exiting the regulated zone under national protocol
 - 8 animals from the same holding, bought by the same trader tested negative on the same day
- Result from LVD63 : Ct 32,9
 - Confirmed by NRL on 27/09 : Ct 32,9



Focus on last zoning evolution due to Meuse (55) outbreak

- **Investigations :**

- We don't perform investigations when the positive animal is sampled less than 48h after leaving its origin holding which gets automatically confirmed as an outbreak
- BUT opportunity to evaluate the circulation level and to compare the surveillance components
- Investigations will take place in the holding where the animal grew up and holdings around

- **Active surveillance will remain in place**

- Results so far :
 - Day 0 = 350 negative ELISA
 - Day 30 = 60 % tests performed and negative





Liberté • Égalité • Fraternité
RÉPUBLIQUE FRANÇAISE

MINISTÈRE
DE L'AGRICULTURE
DE L'AGROALIMENTAIRE
ET DE LA FORÊT

Summary

- Epidemiological situation
- Surveillance
 - Focus on last zoning modification
- **Vaccination**
- Trade
- Corsica

agriculture
gouv.fr
alimentation
gouv.fr



Vaccination BTV-8

- Vaccination is made on **voluntary basis**
 - priority access to vaccine had to be made until June
 - Animals due to leave restriction zone
 - Breeding stock
 - Majority of vaccinated animals have left the regulated zone for trade
- **Vaccine doses are provided by State**

	BTV Alsap 8 Merial	Bluevac BTV 8 CZV	Primum Blue Tongue 1-8 Calier
Doses used	4 471 150	2 800 000	253 675





Vaccination against other BTV serotypes in continental France

- Vaccination against BTV1 and BTV4 is allowed on a voluntary basis
- No state participation : The farmer pays for the vaccinal doses
- **State holds an antigen bank for BTV-1 and 4 in case of introduction or threat at the borders**





Liberté • Égalité • Fraternité
RÉPUBLIQUE FRANÇAISE

MINISTÈRE
DE L'AGRICULTURE
DE L'AGROALIMENTAIRE
ET DE LA FORÊT

Perspectives for Corsica

- Vaccination against BTV1 and BTV4 is mandatory and voluntary for BTV-8
- Active and passive surveillance show absence of viral circulation since at least 2014
- We will propose the lift of the restriction zones for BTV 1 2 4 8 16 during winter, if autumn surveillance permits.

agriculture
gouv.fr
alimentation
gouv.fr



International Trade

□ Intra UE Trade

- General provisions of the Regulation EC 1266/2007
- Bilateral protocols ES/IT/LU/BE
 - Particularly for non vaccinable animals (< 3 months) : insecticid/PCR OR colostral immunity

□ Third countries

- Under vaccination or insecticid/PCR - Few countries restrictions
- Difficulties with RUSSIA and TURKEY : no recognition of vaccination efficacy



National Trade

- ❑ Inside de Restricted Zone :
 - Not regulated
- ❑ To the Free Zone :
 - General provisions of the Regulation EC 1266/2007
 - Specific dispensations
 - Double PCR (Departure – Arrival) under disinsectisation
 - Young calves (<70 days) under disinsectisation and PCR with confinement in dedicated protected buildings at arrival

