



African swine fever in Lithuania (Situation update)

**14-15 September 2022,
State Food and Veterinary Service,
Lithuania**

ASF in Lithuania in domestic pigs

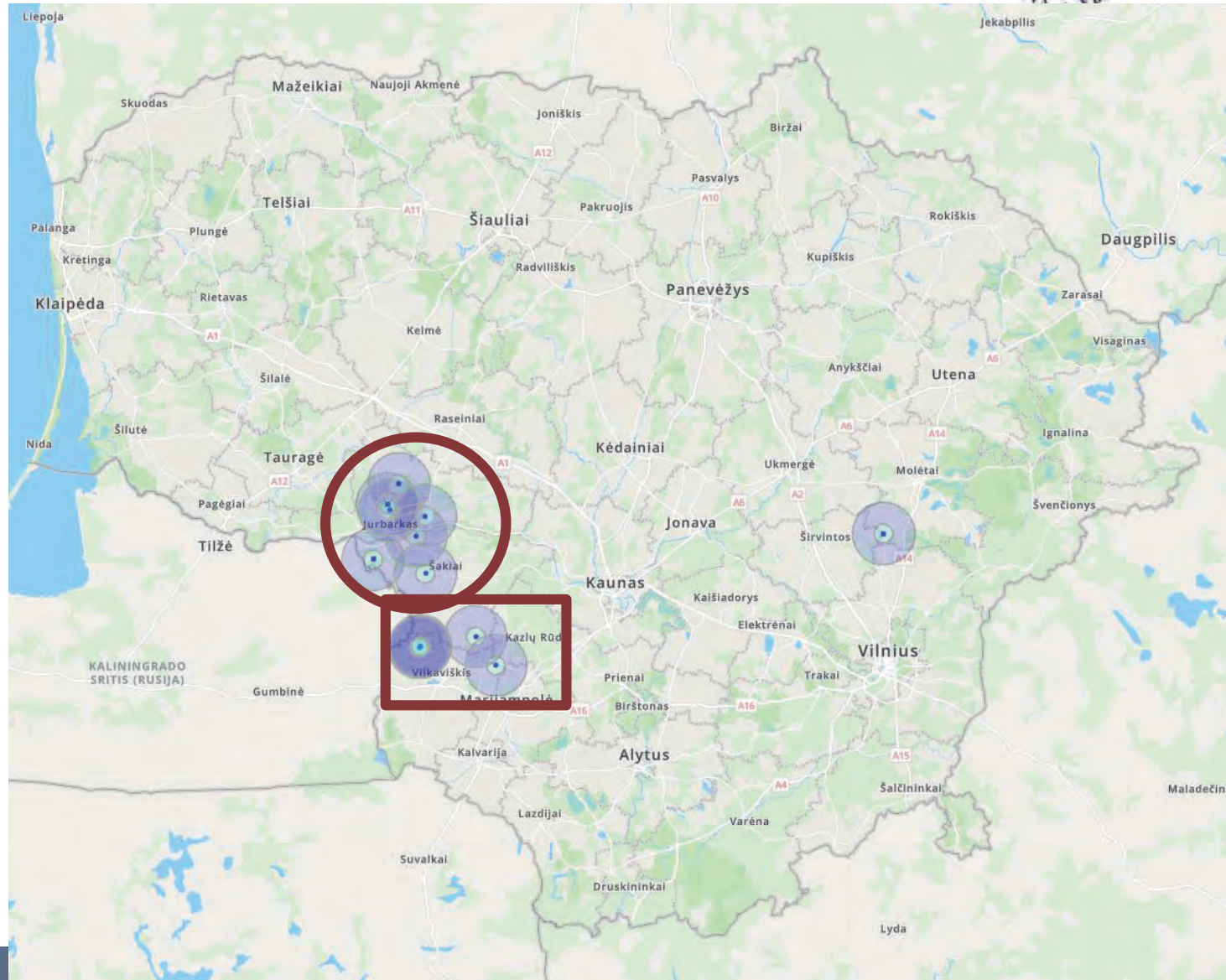


No ASF outbreaks since 10/08/2020

07/07/2022: ASF was confirmed in a non-commercial farm.

- 14 outbreaks

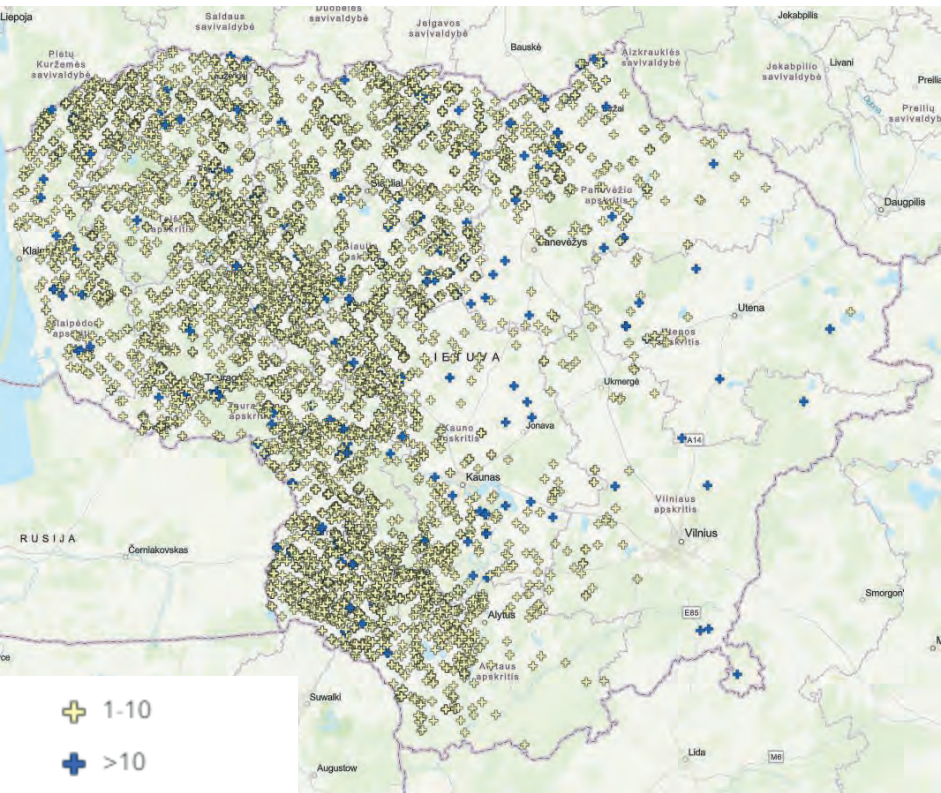
- 11 non-commercial (42 pigs).
- 3 commercial farms (2,202 pigs).



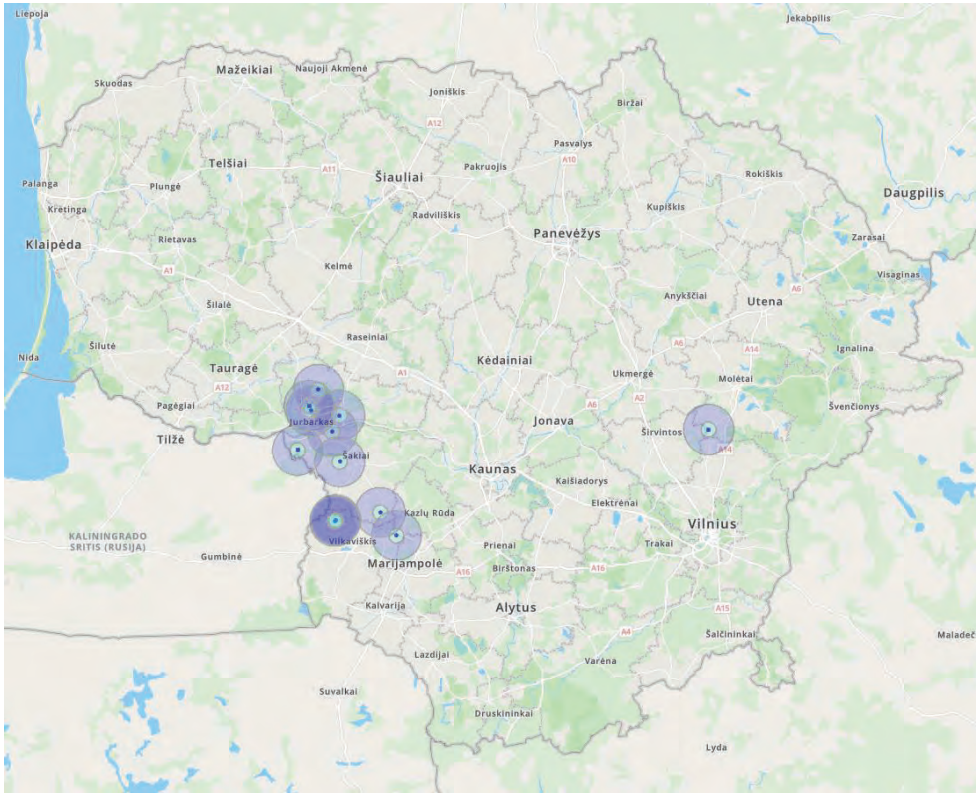
ASF in Lithuania in domestic pigs



Population of domestic pigs



Outbreaks in domestic pigs 2022



ASF in Lithuania in domestic pigs



- Chronology of the outbreaks

ADIS Outbreak reference National reference	Type	Country or territory	Administrative zone	Disease	Suspicion date	Confirmation date	Completion of prelim. C&D if applicable/End date	Species	Total susceptible	Total cases
LT-ASF-2022-00130 2-22/11273 G1	Primary	Lithuania	Marijampoles	A.S.F. in domestic pigs	04/07/2022	07/07/2022	07/07/2022	Swine	4	1
LT-ASF-2022-00151 2-22/12230,12231,12232,12233	Primary	Lithuania	Vilnius	A.S.F. in domestic pigs	21/07/2022	22/07/2022	22/07/2022	Swine	264	54
LT-ASF-2022-00163 2-22/12517 G1; 2-22/12518 G1	Primary	Lithuania	Taurages	A.S.F. in domestic pigs	26/07/2022	27/07/2022	27/07/2022	Swine	6	2
LT-ASF-2022-00164 2-22/12604	Primary	Lithuania	Taurages	A.S.F. in domestic pigs	01/08/2022	02/08/2022	02/08/2022	Swine	12	2
LT-ASF-2022-00165 2-22/12675	Primary	Lithuania	Marijampoles	A.S.F. in domestic pigs	01/08/2022	02/08/2022	02/08/2022	Swine	4	1
LT-ASF-2022-00172 2-22/12854,12855	Primary	Lithuania	Taurages	A.S.F. in domestic pigs	06/08/2022	08/08/2022	08/08/2022	Swine	3	3
LT-ASF-2022-00179 2-22/13249	Primary	Lithuania	Marijampoles	A.S.F. in domestic pigs	15/08/2022	17/08/2022	17/08/2022	Swine	4	1
LT-ASF-2022-00187 2-22/13450	Primary	Lithuania	Marijampoles	A.S.F. in domestic pigs	21/08/2022	22/08/2022	22/08/2022	Swine	4	1
LT-ASF-2022-00188 2-22/13453	Primary	Lithuania	Marijampoles	A.S.F. in domestic pigs	21/08/2022	22/08/2022	22/08/2022	Swine	6	6
LT-ASF-2022-00189 2-22/13447	Primary	Lithuania	Marijampoles	A.S.F. in domestic pigs	21/08/2022	22/08/2022	22/08/2022	Swine	2	1
LT-ASF-2022-00186 2-22/13446	Primary	Lithuania	Marijampoles	A.S.F. in domestic pigs	21/08/2022	22/08/2022	—	Swine	1926	12
LT-ASF-2022-00190 2-22/13638	Primary	Lithuania	Marijampoles	A.S.F. in domestic pigs	22/08/2022	24/08/2022	24/08/2022	Swine	4	1
LT-ASF-2022-00200 2-22/13778	Primary	Lithuania	Taurages	A.S.F. in domestic pigs	28/08/2022	29/08/2022	29/08/2022	Swine	4	1
LT-ASF-2022-00202 2-22/13871 G1	Primary	Lithuania	Marijampoles	A.S.F. in domestic pigs	27/08/2022	30/08/2022	30/08/2022	Swine	3	1

ASF in Lithuania in domestic pigs



LT-ASF-2022-00151

Primary

Lithuania

Vilnius

A.S.F. in
domestic
pigs

21/07/2022

22/07/2022

22/07/2022

Swine

264

54

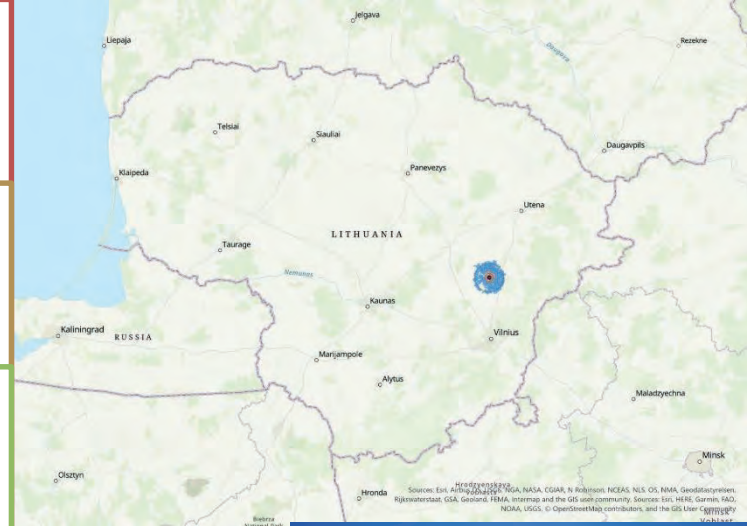
2-

22/12230,12231,12232,12233

On 21 July 2022, the owner notified that 2 pigs were dead and informed the regional SFVS;

A further 12 pigs died before the official veterinarian arrived to take a blood sample from the pig under the ASF surveillance programme;

ASF virus has been confirmed in a commercial farm with 154 pigs (100 pigs were 3 to 8 months of age and 54 pigs were over 8 months) using RT-PCR on 22 July 2022;



ASF in Lithuania in domestic pigs



- All pigs in the affected farm were killed on 22 July 2022 and disposed of in the rendering plant.

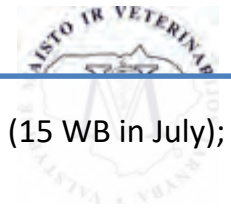


On the same territory, in another stable with 110 fattening pigs (3-8 months of age) belonging to another owner;

As the entire territory of the affected farm is considered one epidemiological unit and the risk of ASF is considered very high, all pigs were killed and disposed of, and the samples for an epidemiological inquiry were taken at the time of the killing.

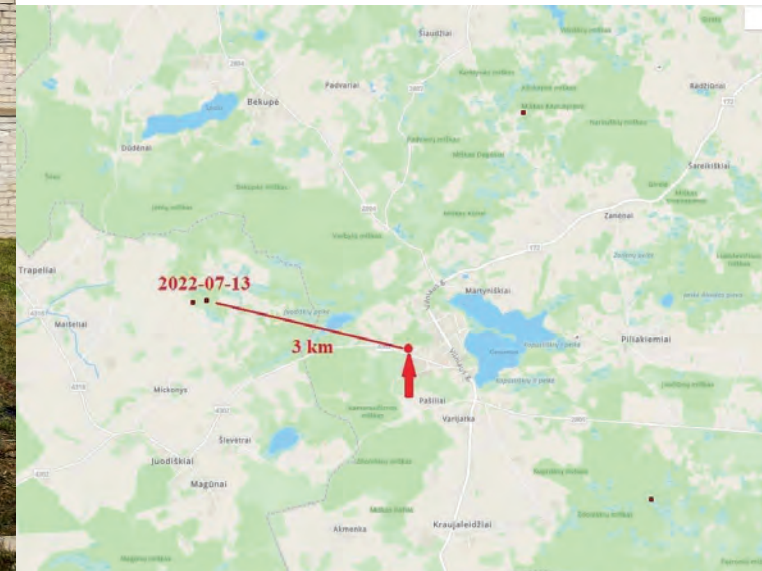


ASF in Lithuania in domestic pigs



- The nearest case of wild boar was detected at the distance of 3 km in July 2022 (15 WB in July);
- Lack of biosecurity:
 - Transportation of feed may have been the most likely cause of ASF in pigs;
 - Household items;
 - Movement of people when performing routine work and not complying with biological safety requirements.
- On 12 of May 2022 the farm was checked by official vets and biosecurity infringements were identified. The penalty was applied (300 Euros).

Epidemiological investigation:



ASF in Lithuania in domestic pigs



LT-ASF-2022-00186
2-22/13446

Primary

Lithuania

Marijampoles

A.S.F. in
domestic
pigs

21/08/2022

22/08/2022

—

Swine

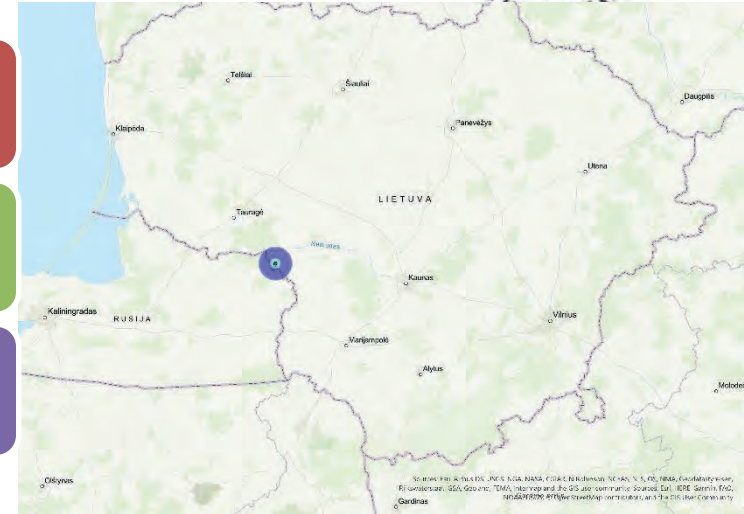
1926

12

On 22 August 2022, the owner observed an increased mortality of pigs. On the same day, the owner informed the regional SFVS;

On 23 August 2022, ASF virus was confirmed in a commercial farm with 1,926 fattening pigs;

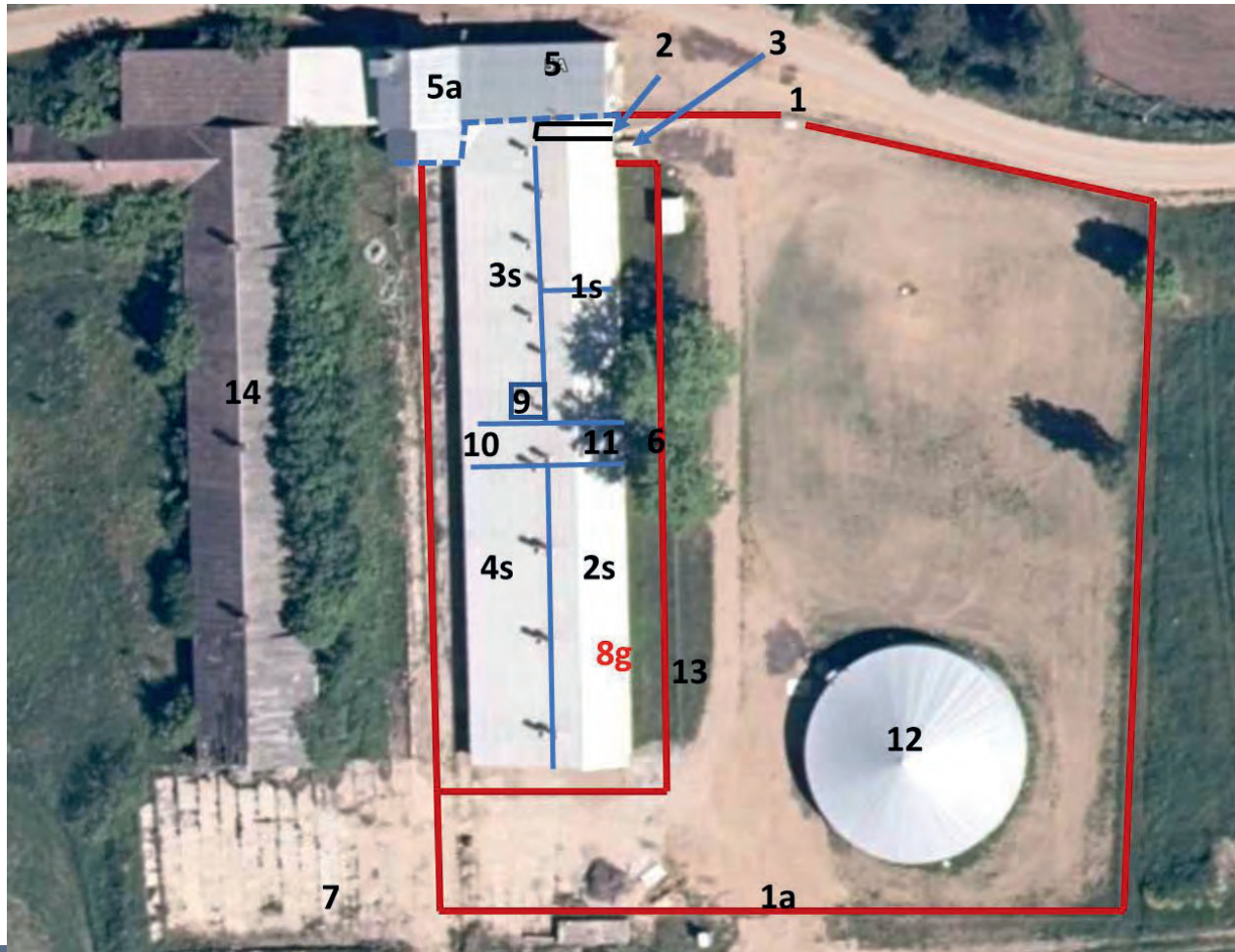
All pigs in the affected farm were killed on 25-27 August 2022 and disposed of in processing plant.



ASF in Lithuania in domestic pigs



- An increased mortality of pigs in **8g** on 19 of August (7 dead pigs).
- In the same barn all pigs died on 19-22 of August (19).



ASF in Lithuania in domestic pigs



ASF in Lithuania in domestic pigs



Epidemiological investigation

- **Software (Education):**

- 2 employees (the owner and a farm worker);
- Farm worker is not trained on the biosecurity requirements;

- **Hardware**

- In case of more work or troubleshooting, additional person is invited, but they are not registered in the registration log;
- There are no disinfection barriers at the carcass removal doors and between the pig holding area and the changing rooms;
- There are no insect nets on the farm, only bars on the windows.



ASF in Lithuania in domestic pigs



- Hypothesis

- Indirect contact with vehicles. 3 weeks before active movement of vehicles in proximity of the farm (harvesting period).



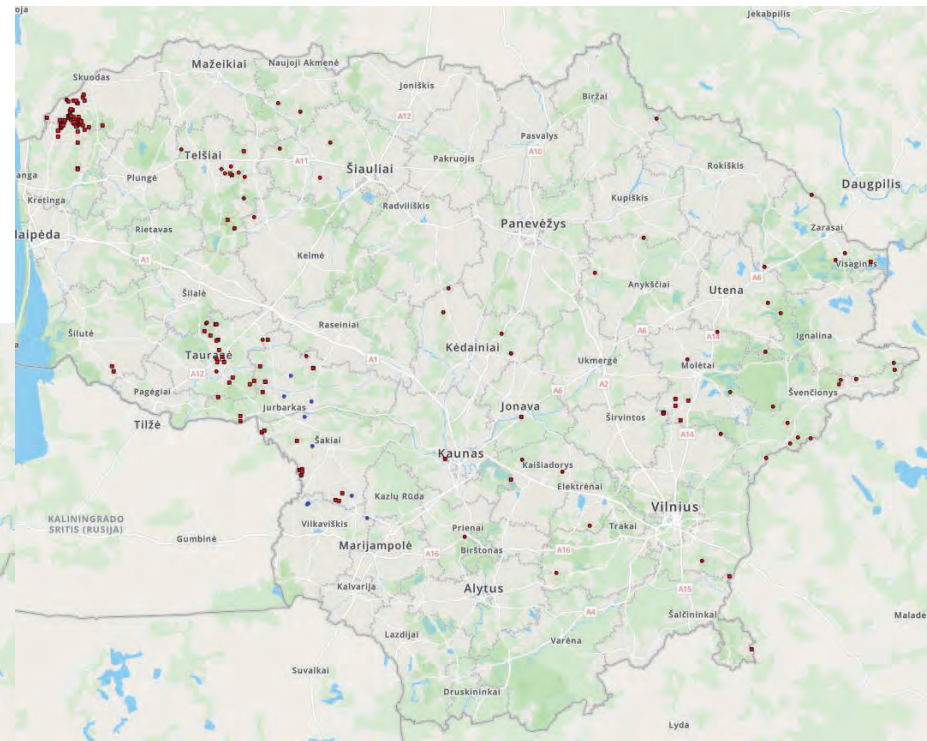
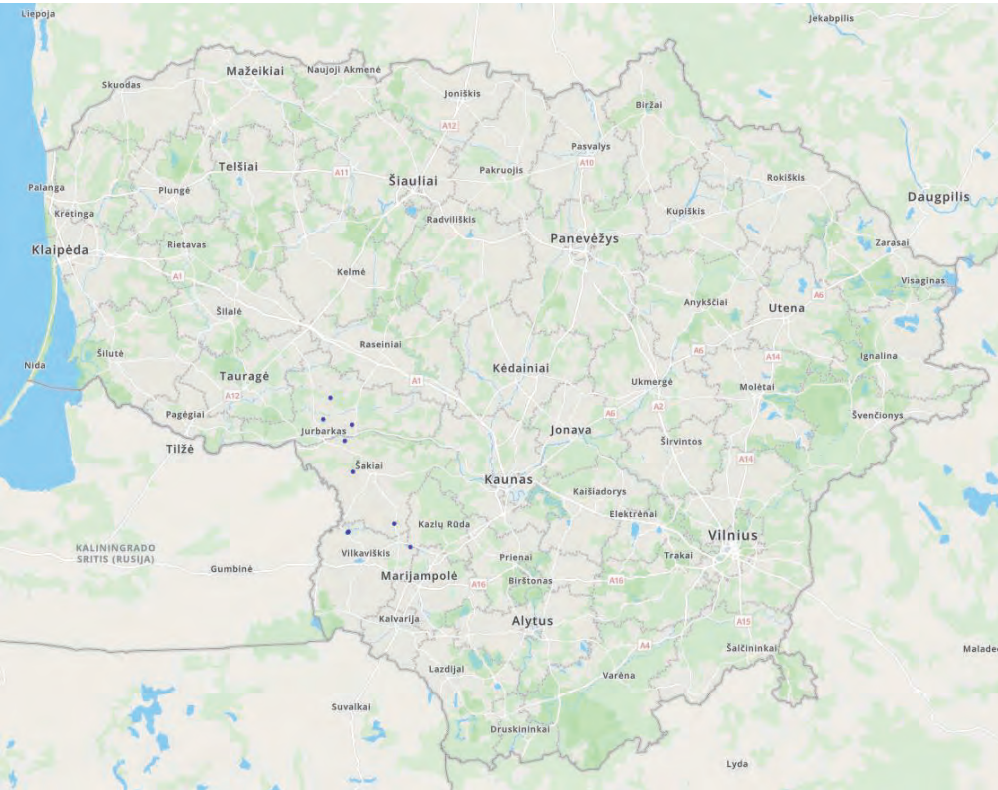
*grain cleaning facilities



ASF in Lithuania in domestic pigs



- 11 outbreaks in non-commercial farms;
- Two clusters;
- Virus pressure from environment;
- Lack of biosecurity:
 - Feeding green grass
 - Visitors
 - Fresh beddings



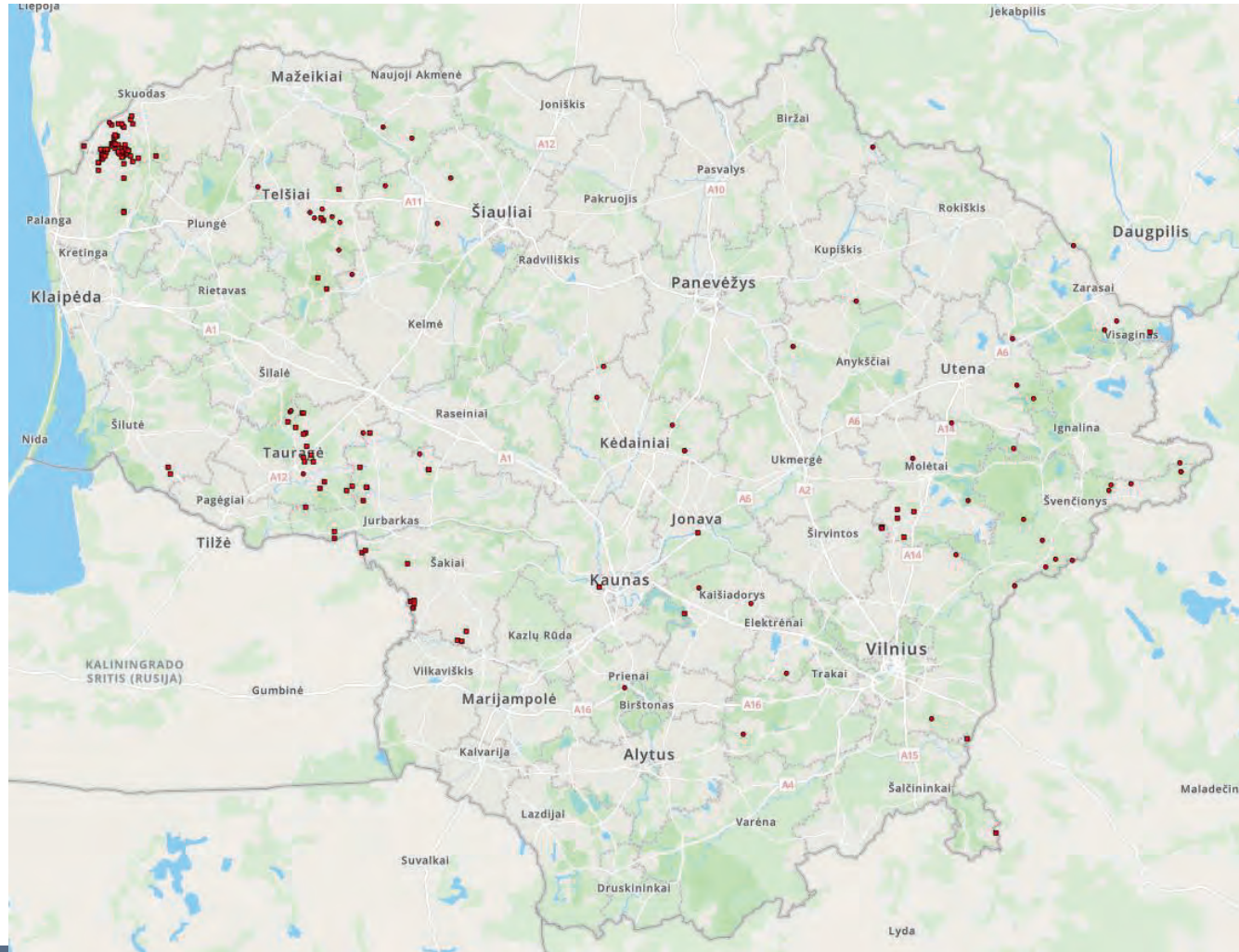
ASF in Lithuania in domestic pigs

STO IR VETERIN

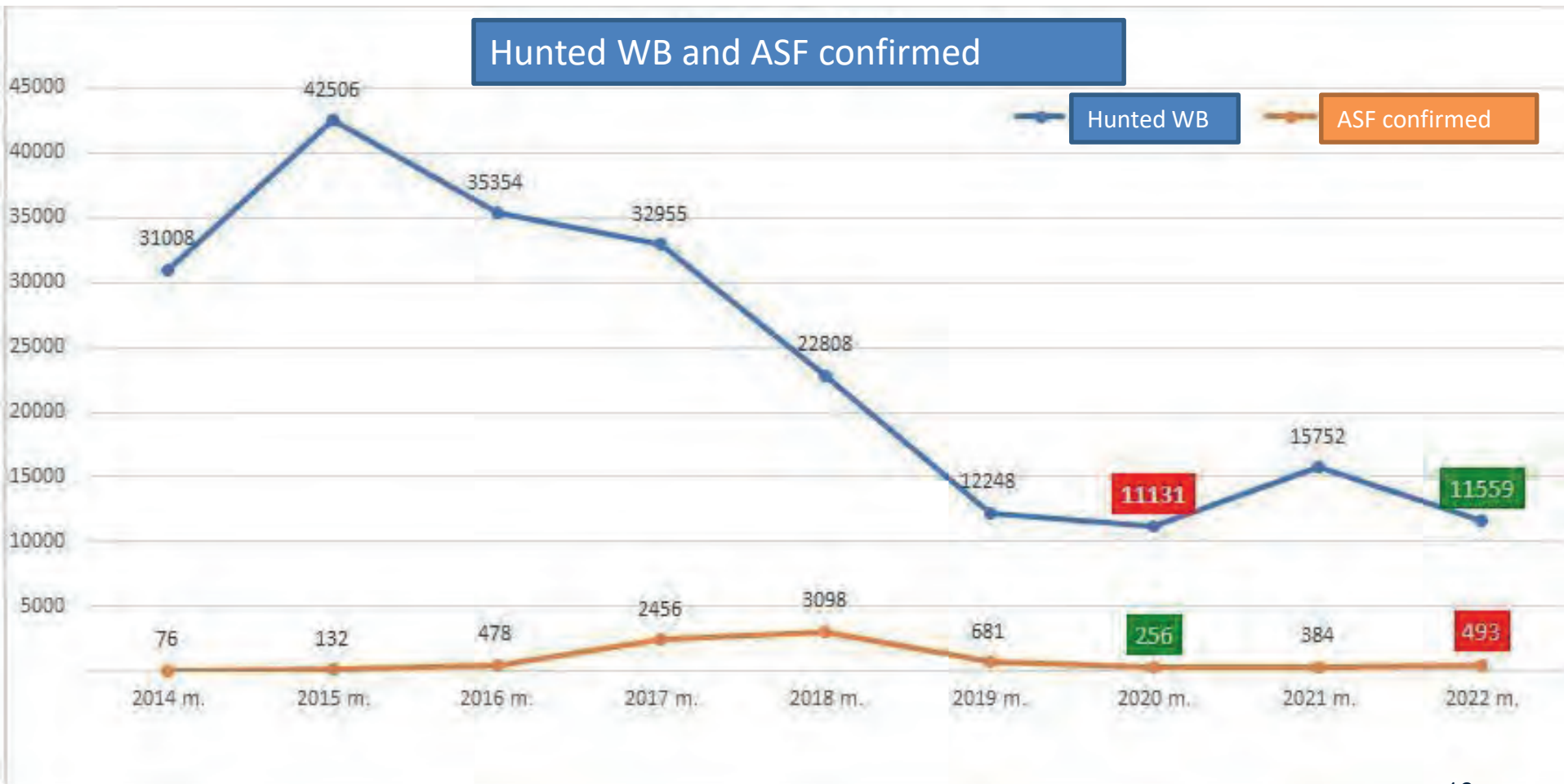


ASF in Lithuania in wild boar

- 185 cases (492 wild boars, 79 hunted, 413 found dead)



ASF in Lithuania in wild boar



The remaining risk

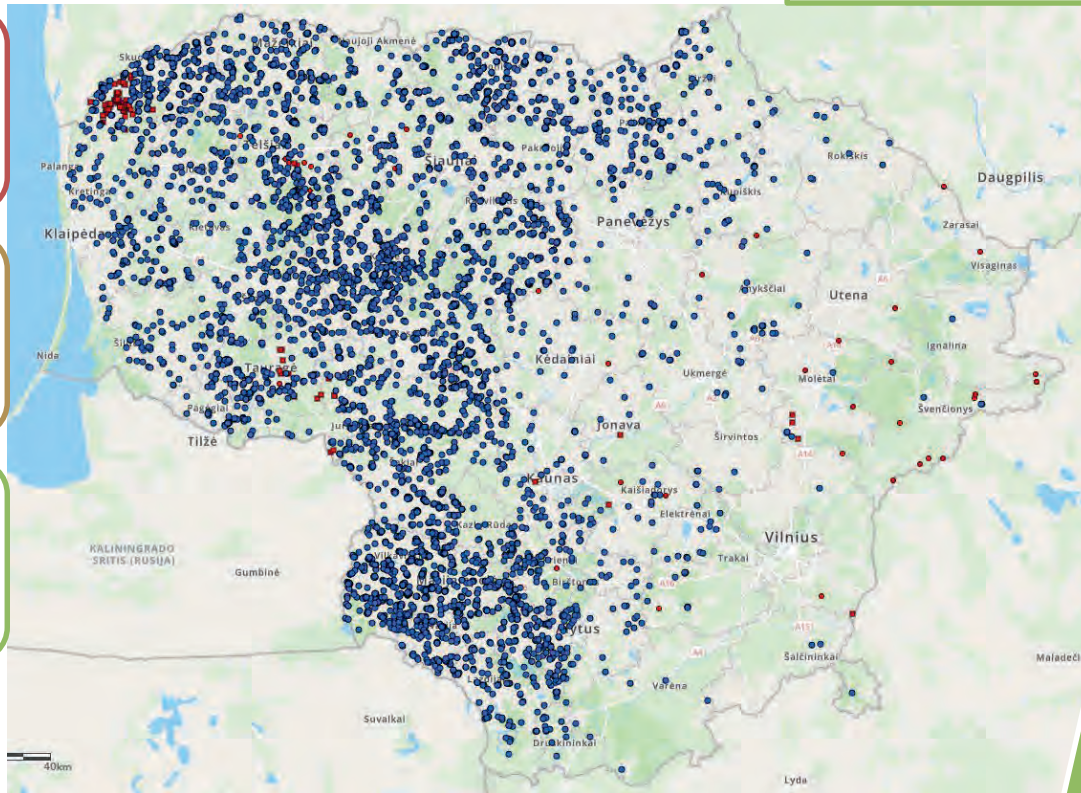


Measures to limit the risk

The number of wild boar with a positive active virus (RT-PCT) is growing.

The density of wild boar is increasing.

High number of non-commercial farms (6000).



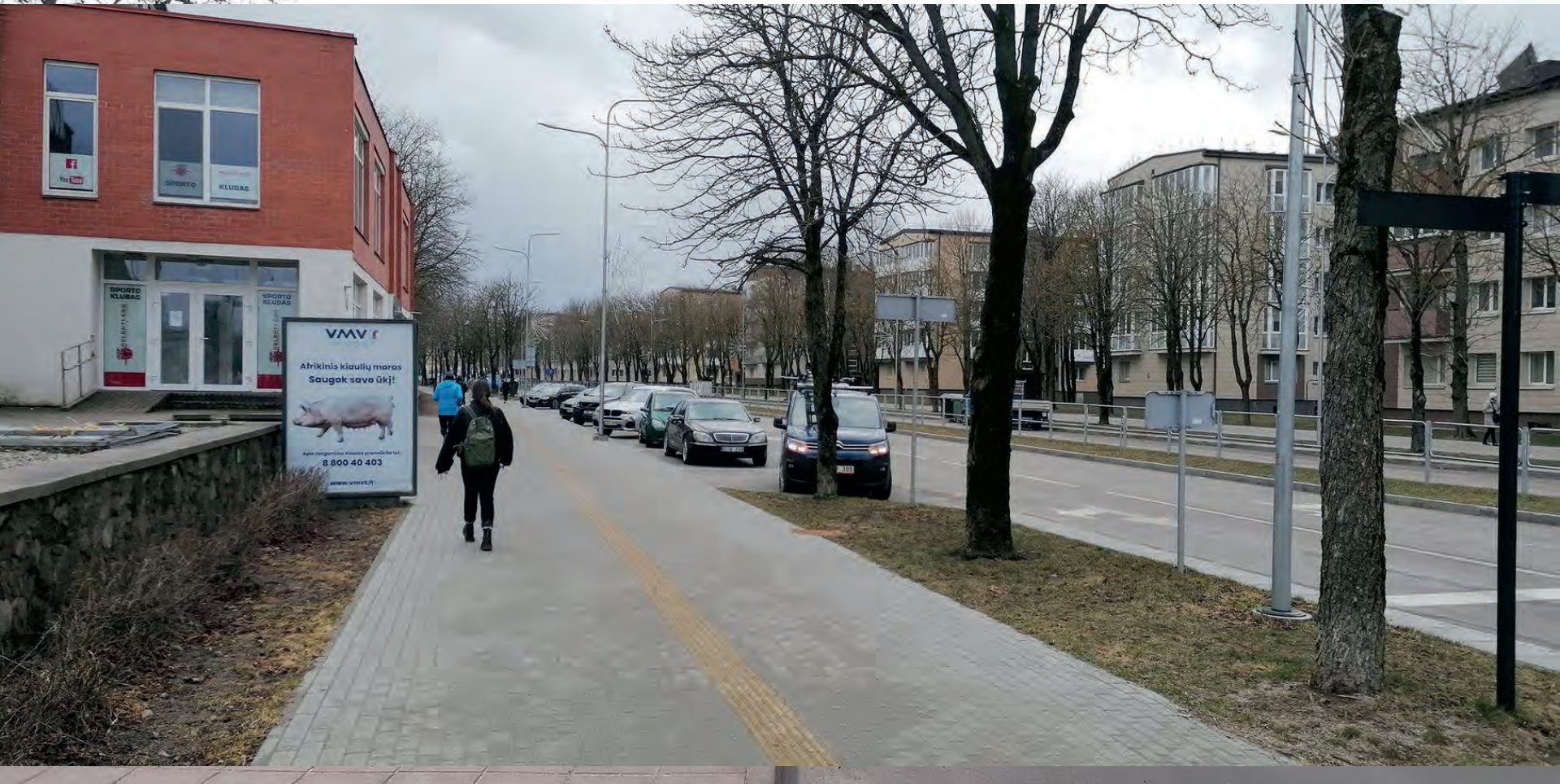
Unscheduled inspections performed on hunting grounds.

Official inspections of biosecurity in domestic pig farms.

Trainings for official vets

Special designated tv shows, regional newspapers.

Awareness



Awareness



VALSTYBINĖ MAISTO IR
VETERINARIJOS TARNYBA

Afrikinis kiaulių maras – saugok savo ūkį!

Nešerkite žolę ir nenaudokite šviežių pakratų. Neleiskite pašalinių.



Susirgus kiaulei praneškite
☎ 1879



www.vmvt.lt



VALSTYBINĖ MAISTO IR
VETERINARIJOS TARNYBA

Nugalėti afrikinį kiaulių
marą gali padėti ir tu!

Radai nugaišusį šerną?



Pranešk Valstybinei maisto
ir veterinarijos tarnybai

☎ 1879



Kuriame Lietuvos ateitį

www.vmvt.lt

*Už kiekvieną surastą nugaišusį
šerną mokama 30 Eur premija.



VALSTYBINĖ MAISTO IR
VETERINARIJOS TARNYBA

Afrikinis kiaulių maras
– saugok savo ūkį!



Nešerkite žolę ir nenaudokite
šviežių pakratų.
Neleiskite pašalinių.

Susirgus kiaulei praneškite

☎ 1879



Kuriame Lietuvos ateitį

www.vmvt.lt



Questions? Suggestions? Remarks?