



ASF situation in Estonia

Veterinary and Food Board

Domestic pigs herd structure

- 2015 - 2017

	2015		2016		2017	
Herd size	No of herds	No of pigs	No of herds	No of pigs	No of herds	No of pigs
1 - 10	488	1 626	94	418	17	82
11 - 100	95	2 644	54	1 665	29	992
101 - 1000	36	14 930	29	12 498	18	9 296
1000 -	82	360 307	71	320 511	63	279 593
Total	701	379 507	248	335 092	127	289 963

Biosecurity rules (1)

Biosecurity measures are listed in Infectious Animal Disease Control Act:

The list of general biosecurity rules (organisation of personnel and transport movements, separation of sick animal from healthy one, rodent and insect control etc).

All pig keepers have to draw up a **biosafety plan** regarding the biosafety measures to be taken in a livestock building and construction works and in an area enclosed for keeping animals.

Biosecurity rules (2)

Compulsory biosecurity rules that are applied in case that there is ASF situation in the country (The Regulation of Minister of Agriculture No 179):

- Pigs must be kept indoors, no contact with other animals;
- organizing the entrance to the farm over disinfection barrier (both for humans and vehicles);
- changing of clothes and disinfection of hands and foot wear before entering the holding and after leaving it;
- no exchange of equipment, feed and bedding with other farms;
- no contact to any part of feral pig at the farm territory;
- bringing green fodder to the farm territory is not allowed;
- it is only allowed to use feed that has been kept for the last 30 days in the way that no animals (and possibly contaminated humans) have no contact with it or it has been heat-treated outside the farm;
- it is only allowed to use bedding that has been kept for the last 90 days in the way that no animals (and possibly contaminated humans) have no contact with it;
- animal keeper explains biosecurity measures to farm workers and household members and orders additional measures after visiting woods;
- territory of the farm is fenced;
- swill feeding is forbidden.

Controls/inspections

- **At least twice a year** inspections are carried out by animal health specialists of the local veterinary centre
- **All pigs farms are inspected, independently of the farm size**, to explain and control implementation of biosecurity measures (feed, biosecurity plan, disinfection barrier etc)
- Total number of farms inspected **in 2018**: 132, from which **128** kept pigs.

Support for farmers in 2015

- pig keeping termination compensation - 121 farmers, 133 applications, 498 pigs.
- fencing

Passive surveillance of domestic pigs

- ASF strategy:
 - Each week, virological testing of at least the first two dead pigs older than 2 months.
 - In 2018 we have tested 1305 dead domestic pigs from the pig farms. All pigs have been ASF negative.
 - Up to 30.04.2019 we have tested 723 dead domestic pigs this year.

Awareness campaigns, communication

- Calendars for pig farmers: 12 months with different biosecurity rules with humorous pictures
- Meetings with hunters and pig farmers
- ASF as part of hunters trainings to get hunting permit
- ASF situation updates and biosecurity requirements in hunters magazine/web-page
- Video materials about biosecurity measures during the hunting and processing the carcasses
- Posters at entry points of travellers from third countries



07.05.2019

Preventive/control measures

23

TAUDIOHT!

Õige hoidmise ja ennetamise abil saad loomade haiguste levimist vältida.

ÄRA PUUSTU
Ärasta puustuda loomadega ega nende toodetega, eriti loomade nahaga ja villaga.

TÄRVIKUS
Käsi pesemine ja desinfitseerimine on loomade haiguste levimise vältimiseks oluline.

PÄRAJA JA PEEDI
Ärasta puustuda heina ja sööda vahetajate vahel.

SICAGE KAITSEKATE
Kasuta loomade hooldamiseks vajalikku varustust kaitsesüsteemidega.

Lisateinf ja kontakti andmiseks WWW.SEKATK.EE

Vältige loomahaiguste tootmist Euroopa Liidus!

Reisijad peavad need tooted eestama kontrollimiseks*

Loomad pärinevad loomadevõrgu vabalt liikuvast piirkonnast, mis põhjustab loomade haiguste levimist.

Loomad pärinevad loomadevõrgu vabalt liikuvast Euroopa Liidu alla kuuluvast territooriumist ja vahemaadest.

07.05.2019

SEAFARMIDE BIOOHUTUSNÕUDED



Kõrvalistel isikutel seafarmi territooriumile sisenemine keelatud!
Täida kõiki loomapidaja poolt kehtestatud muid nõudeid.



Seafarmi territooriumile sisenemine on keelatud, kui oled viimase 48 tunni jooksul:

- Kokku puutunud sigadega
- Kokku puutunud metssigadega
- Käinud jahil
- Viibinud välismaal



Seafarmi territooriumile on keelatud tuua sealiha ja -liha tooteid (k.a. metssealiha ja -liha tooted).



Kõiki bioohutusmeetmeid tuleb rangelt järgida. Kui Sa ei ole bioohutusnõuetega kursis, võta ühendust kohaliku veterinaarkeskusega.



Kõik seafarmi territooriumile sisenevad sõidukid peab desinfitseerima.



Kõik seafarmi territooriumile sisenevad isikud peavad läbima desobarjääri.

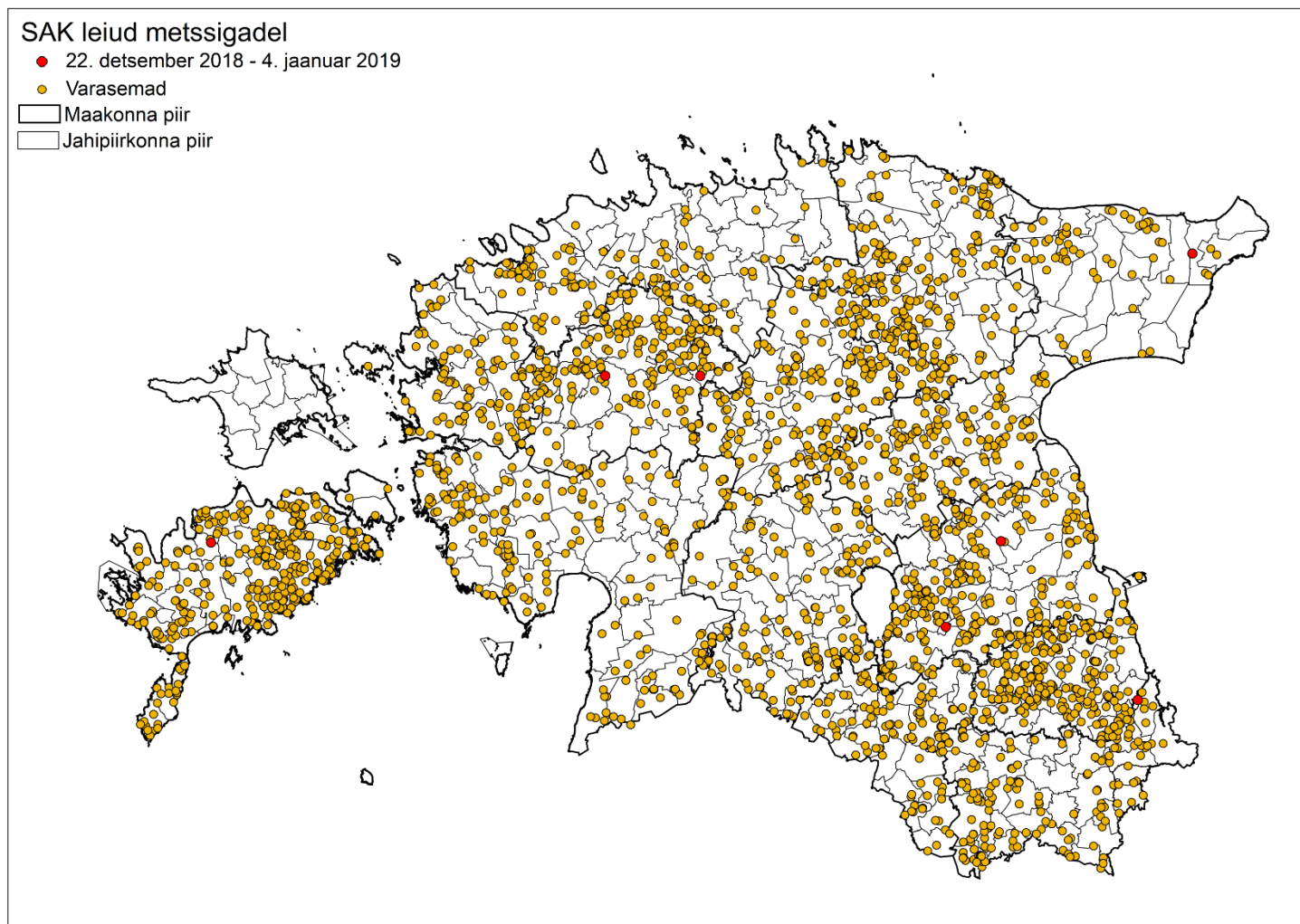


Seafarmi sisenedes pese ja desinfitseeri oma käed.

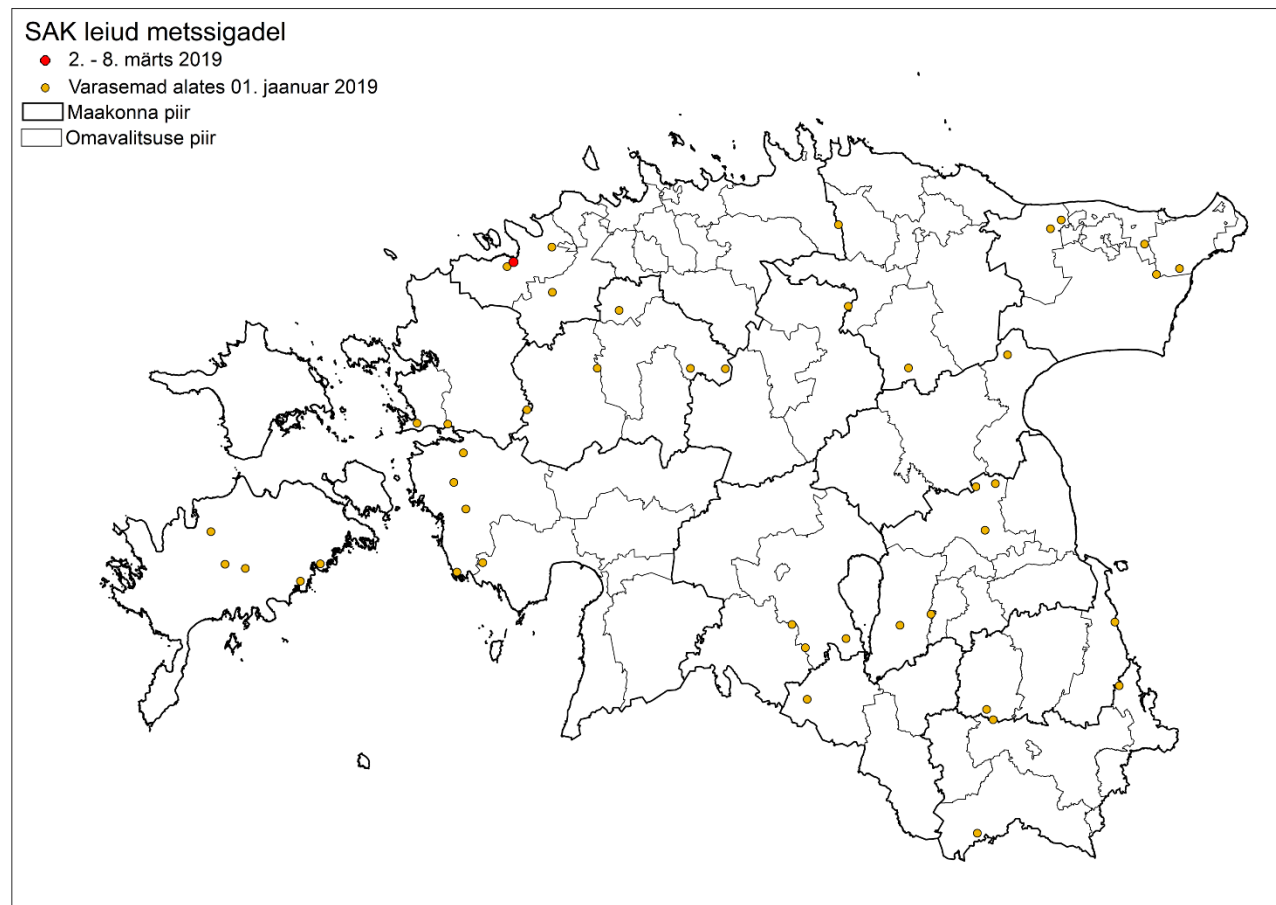


Hoia puhtust!
Prügi viska alati prügikasti.

ASF positive wild boars 2014 - 2018



ASF positive wild boars in 2019



Challenges

- Keeping the wild boar population density at a low level in the following years ($< 1,5$ ind/1000 ha)
- Biosecurity in the farm and also during hunting
- Regular controls of the pig farms
- Awareness of farmers, hunters, service providers, public etc.
- Human behaviour

Suggestion for the ASF free countries/regions under risk:

considerable preventive reduction of WB numbers to have less infected material in nature in a case if virus gets there.

**Thank you for
your attention!**

