



**MINISTÈRE
DE L'AGRICULTURE
ET DE LA SOUVERAINETÉ
ALIMENTAIRE**

*Liberté
Égalité
Fraternité*

HIGHLY PATHOGENIC AVIAN INFLUENZA

SITUATION IN FRANCE

- **HPAI situation as of 19 June 2023**
- **Prevention measures**
- **Control measures in South West**



**MINISTÈRE
DE L'AGRICULTURE
ET DE LA SOUVERAINETÉ
ALIMENTAIRE**

*Liberté
Égalité
Fraternité*

HPAI SITUATION IN SOUTH WEST AS OF 19 JUNE 2023

HPAI outbreaks in poultry, Protection and Surveillance Zones

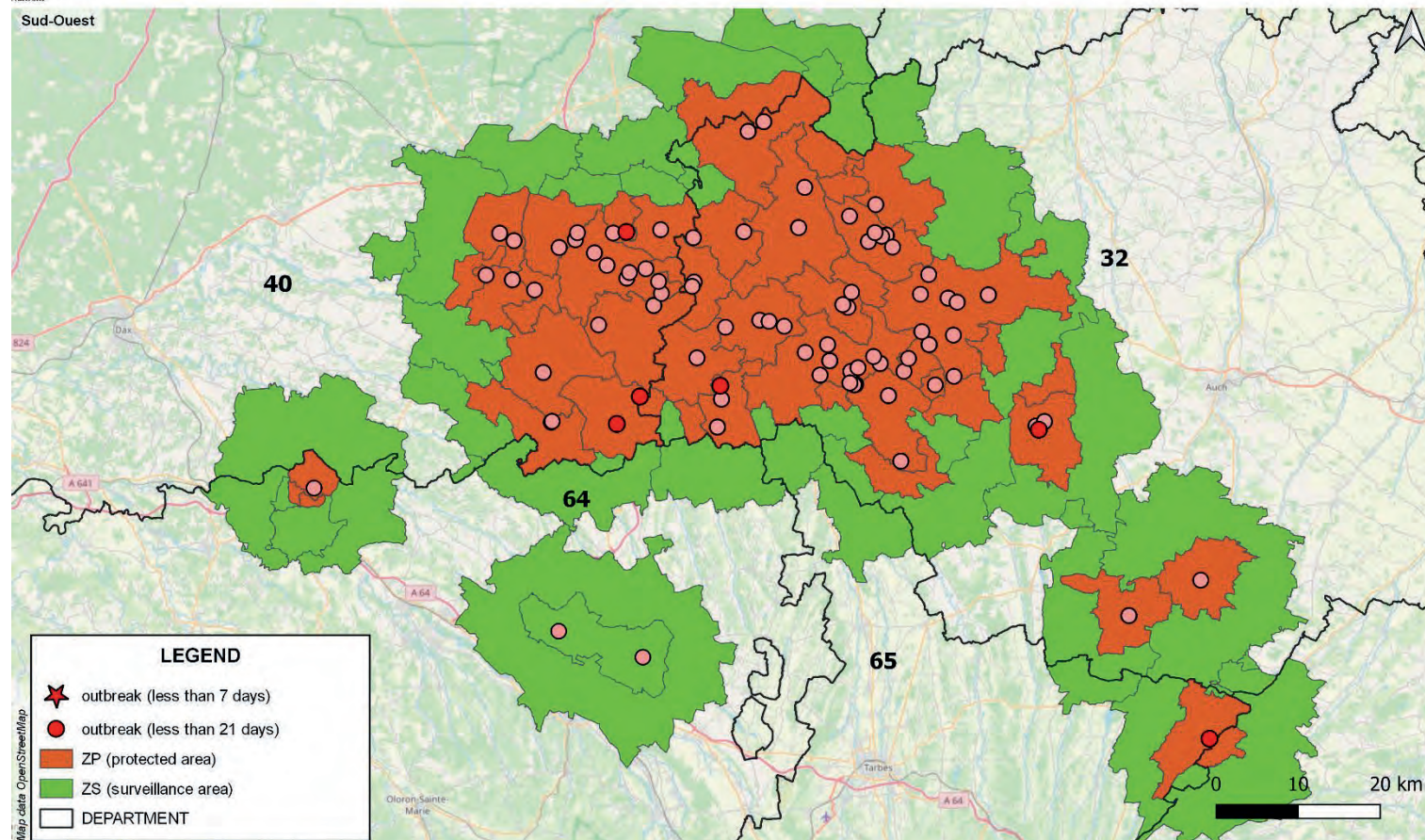
**TOTAL in South-West, since
4th May 2023 : 85**

▪ **South West region :**

Regions/Departments	Poultry outbreak
Centre-Val de Loire	
45 , Loiret	
Nouvelle-Aquitaine	27
40 , Landes	24
64 , Pyrénées-Atlantiques	3
Occitanie	58
32 , Gers	57
65 , Hautes-Pyrénées	1
Total général	85

Location of HPAI outbreaks in the South West region

from 04-05-2023 to 19-06-2023





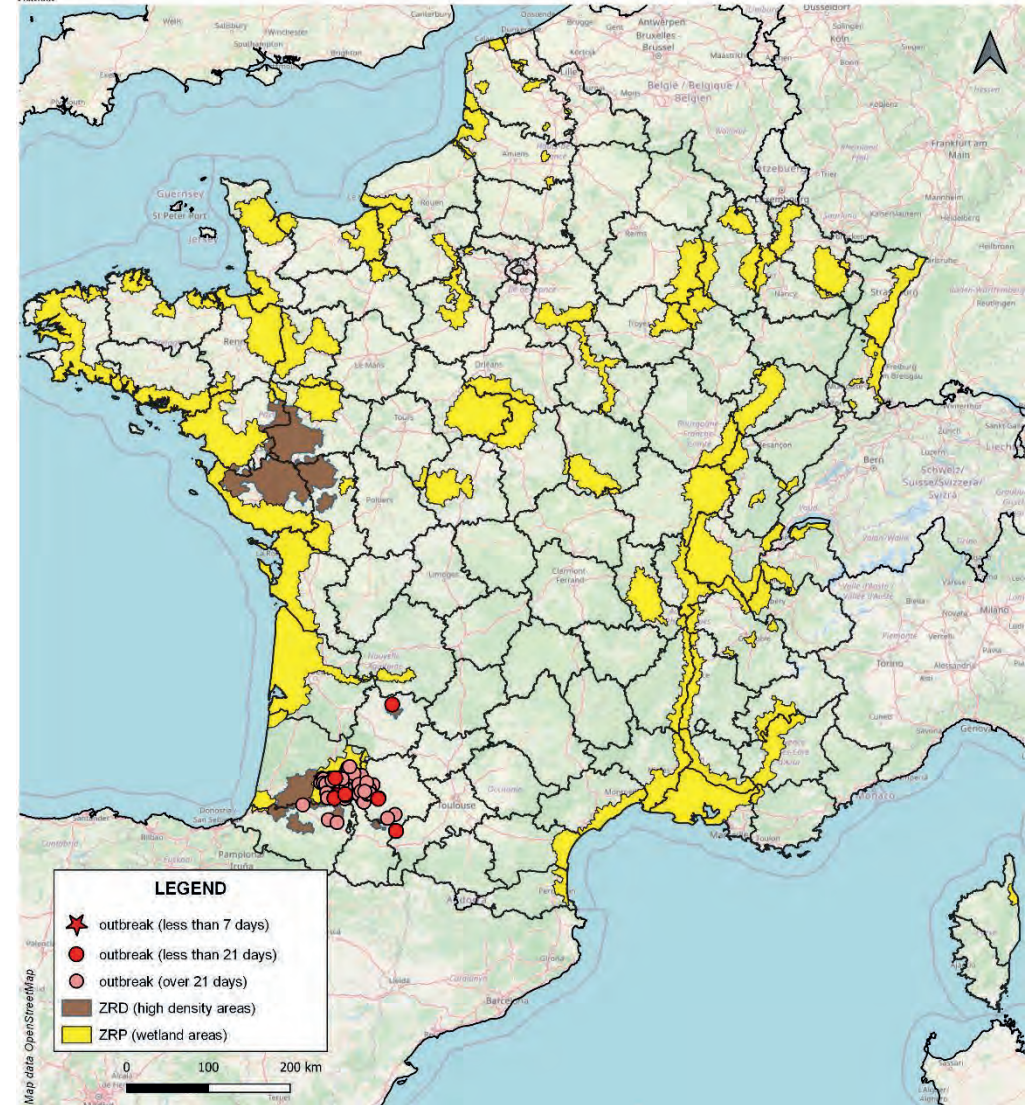
**MINISTÈRE
DE L'AGRICULTURE
ET DE LA SOUVERAINETÉ
ALIMENTAIRE**

*Liberté
Égalité
Fraternité*

HPAI SITUATION IN THE WHOLE OF FRANCE

AS OF 19 JUNE 2023

HPAI outbreaks in poultry



TOTAL in France, since 1 August 2022 : 400

Régions/Départements	Confirmé Poultry
Auvergne-Rhône-Alpes	4
1, Ain	3
7, Ardèche	
69, Rhône	1
43, Haute-Loire	
74, Haute-Savoie	
Bretagne	40
22, Côtes-d'Armor	27
29, Finistère	2
35, Ille-et-Vilaine	3
56, Morbihan	8
Centre-Val de Loire	6
36, Indre	1
37, Indre-et-Loire	1
41, Loir-et-Cher	
45, Loiret	3
28, Eure-et-Loir	1
Grand Est	1
55, Meuse	1
68, Haut-Rhin	
Hauts-de-France	6
2, Aisne	
60, Oise	
62, Pas-de-Calais	1
80, Somme	3
59, Nord	2
Île-de-France	1
77, Seine-et-Marne	1
78, Yvelines	
91, Essonne	
La Réunion	1
974, La Réunion	1

Normandie	3
50, Manche	1
76, Seine-Maritime	1
61, Orne	
14, Calvados	
27, Eure	1
Nouvelle-Aquitaine	73
17, Charente-Maritime	
33, Gironde	
24, Dordogne	8
79, Deux-Sèvres	35
64, Pyrénées-Atlantiques	3
40, Landes	27
23, Creuse	
Occitanie	74
46, Lot	
30, Gard	
65, Hautes-Pyrénées	2
34, Hérault	
11, Aude	
81, Tarn	1
32, Gers	70
9, Ariège	
82, Tarn-et-Garonne	2
Pays de la Loire	188
44, Loire-Atlantique	18
49, Maine-et-Loire	44
72, Sarthe	4
85, Vendée	120
53, Mayenne	2
Bourgogne-Franche-Comté	1
71, Saône-et-Loire	1
21, Côte-d'Or	
Provence-Alpes-Côte d'Azur	1
84, Vaucluse	1
13, Bouches-du-Rhône	
Total général	400

Weekly evolution of the number of HPAI outbreaks in poultry

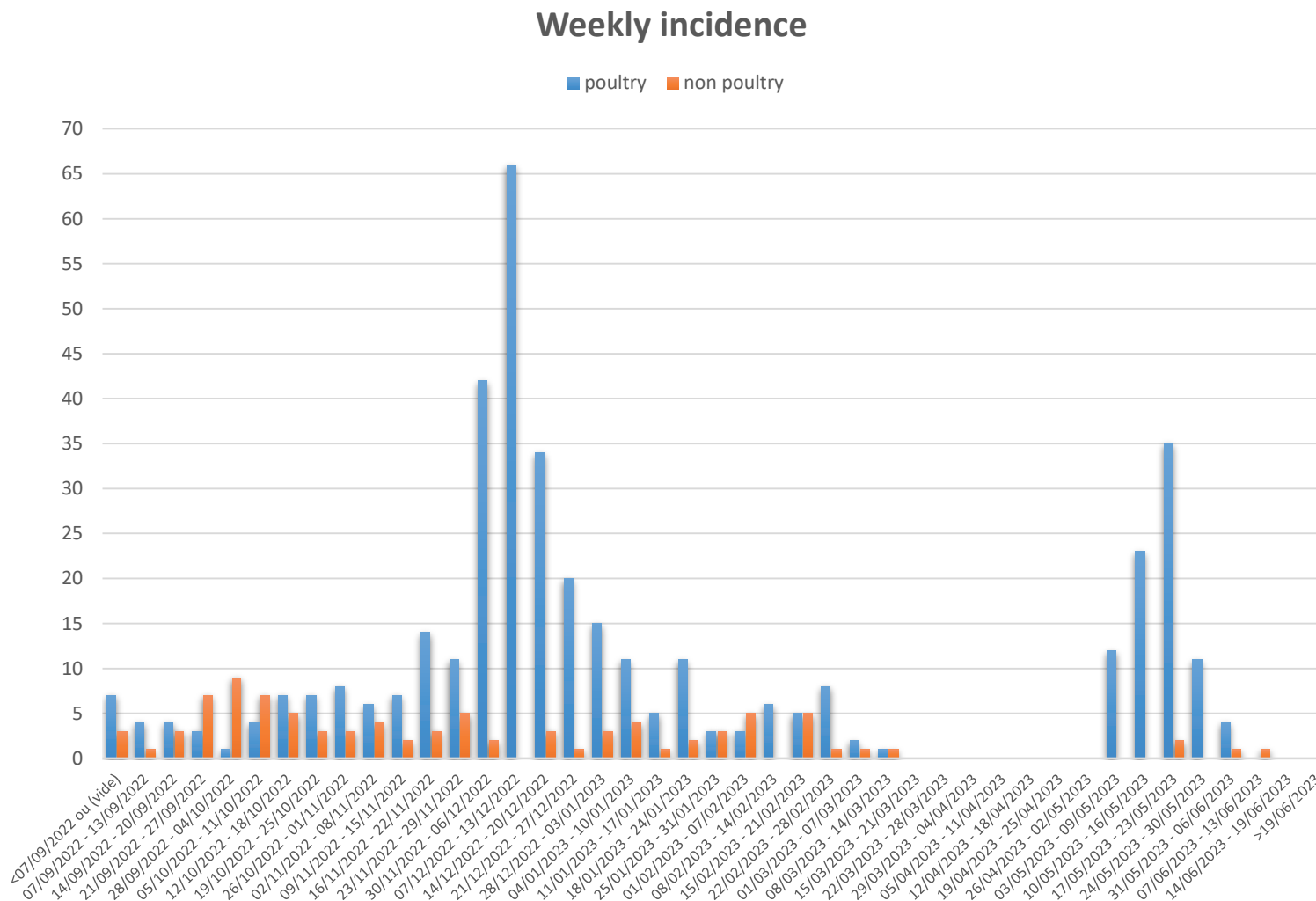
- **Phase 1 :** From September 2022 to Mid-November 2022
 - Many primary introductions from wildlife
 - Split distribution throughout France
 - High proportion of captive birds affected

- **Phase 2 :** From Mid November to end of December 2022
 - Primary Introductions and inter-farm diffusion
 - Concentrated mainly in the Great West
 - Mainly affected poultry farms

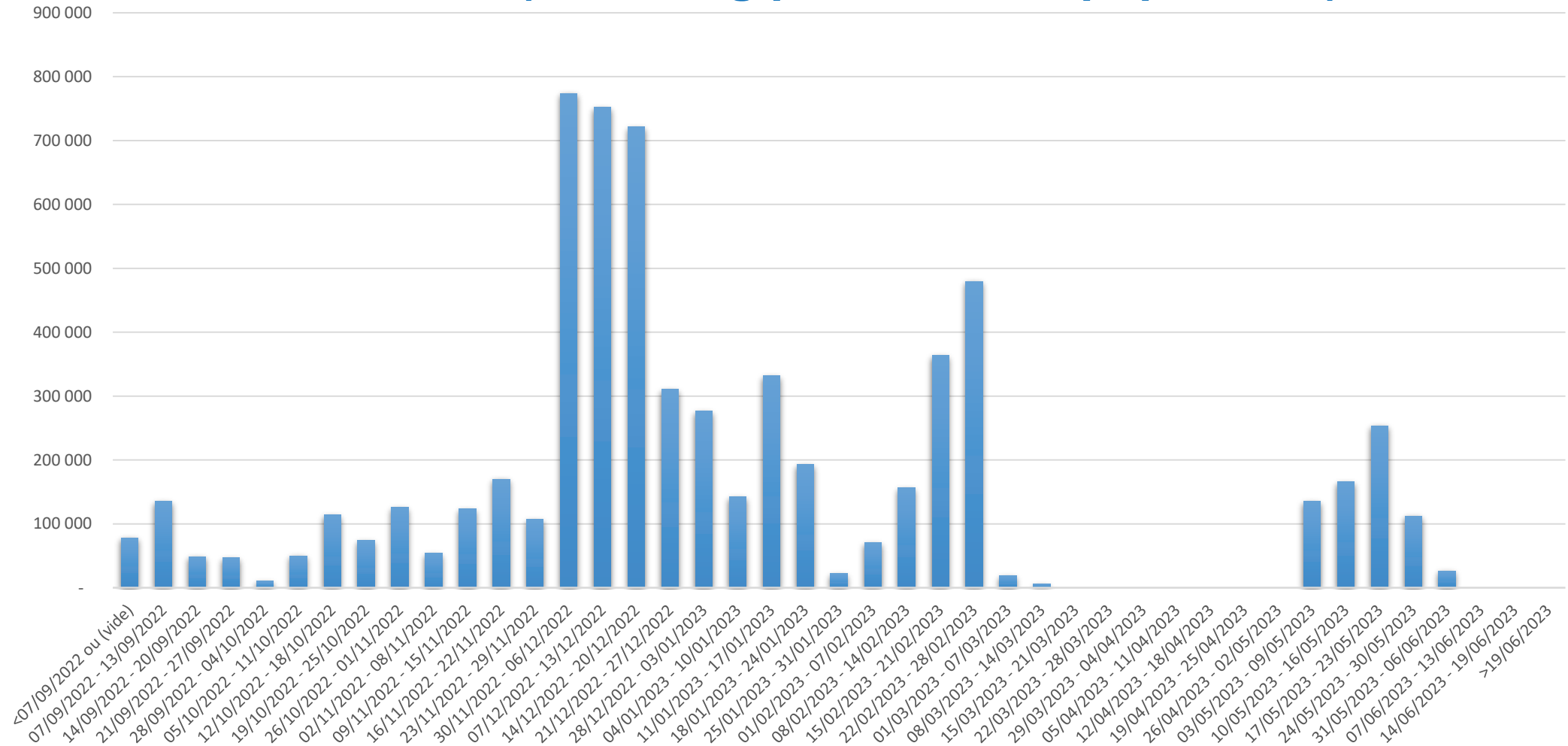
- **Phase 3 :** From end of December to mid-March
 - Incidence decreases
 - Primary introductions
 - Cluster in Côtes d'Armor department

- **Phase 4 :** From mid-March to beginning of May
 - Stabilization – no outbreaks except in wildlife

- **Phase 5 :** From 4th May
 - Primary Introductions and inter-farm diffusion
 - Concentrated mainly in the South West
 - Mainly affected poultry farms

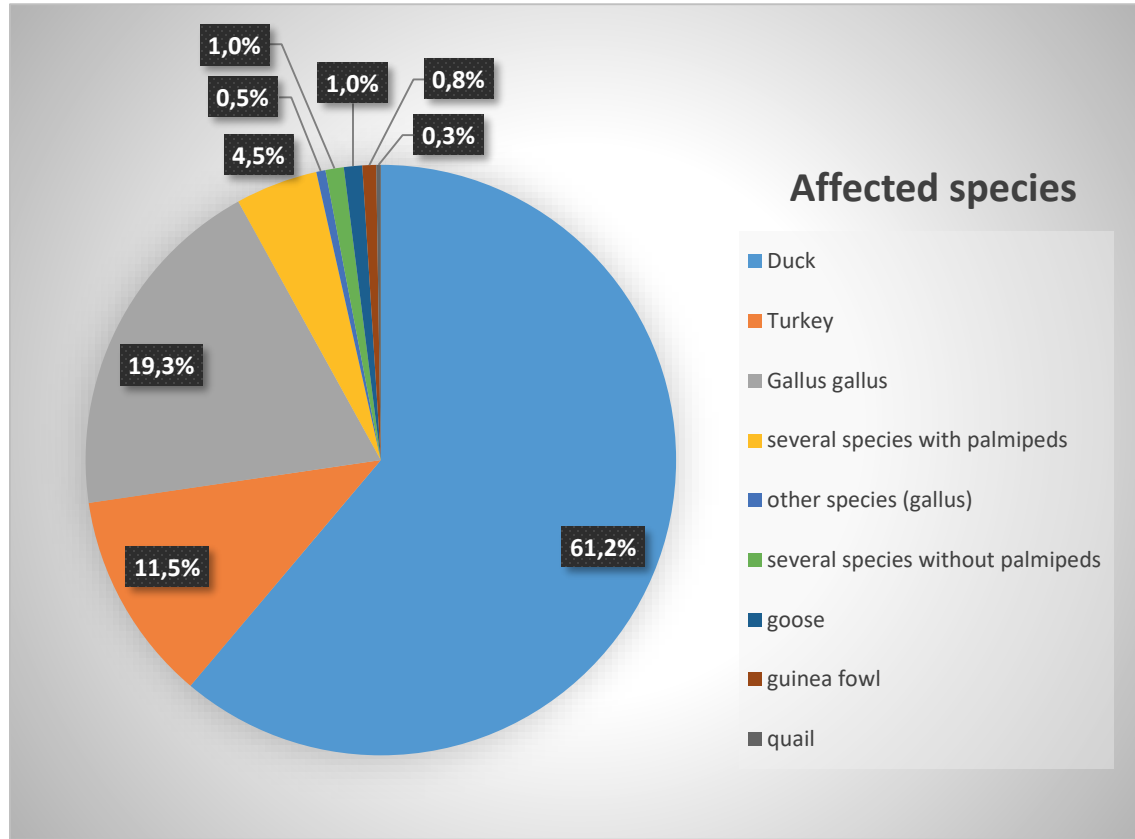


Weekly evolution of the number of killed poultry in the outbreaks (excluding preventive depopulation)



Total : 6 444 557

Affected species

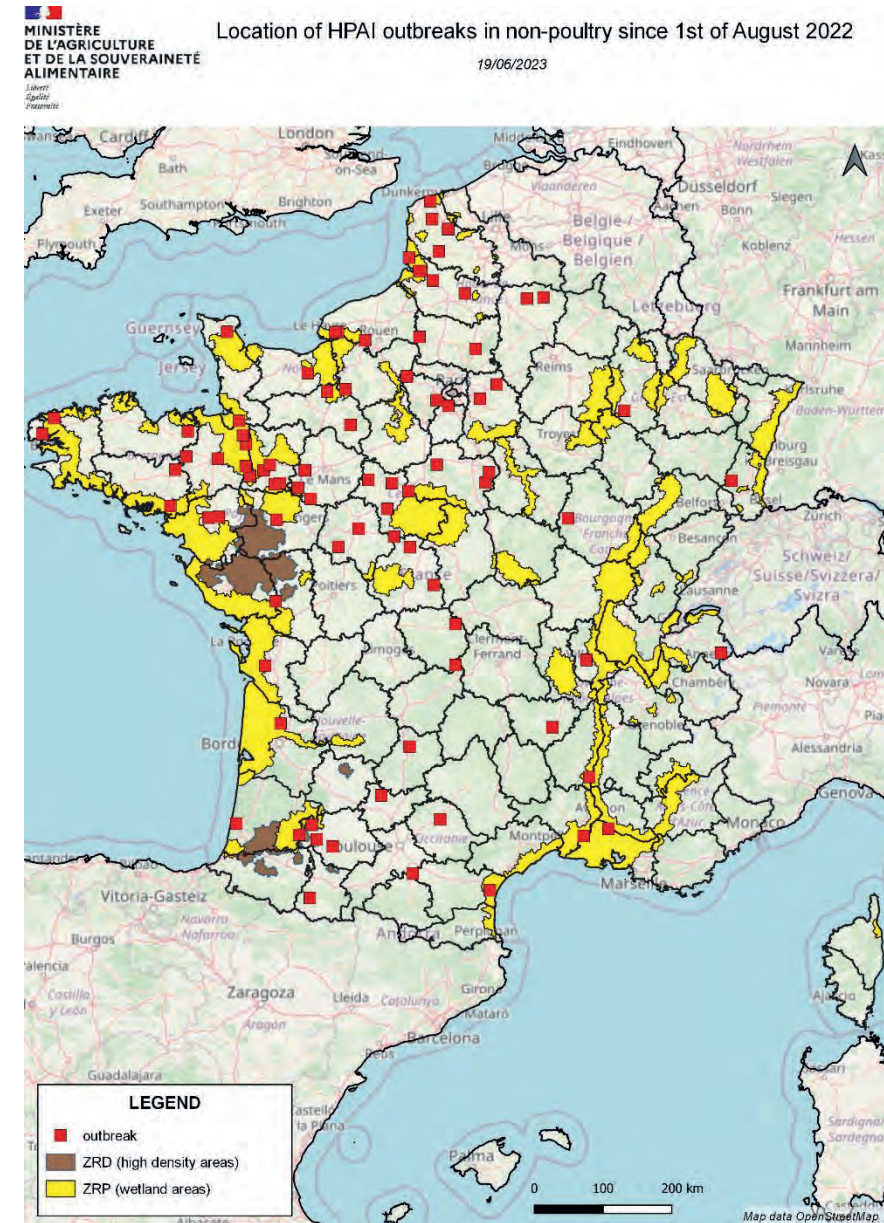
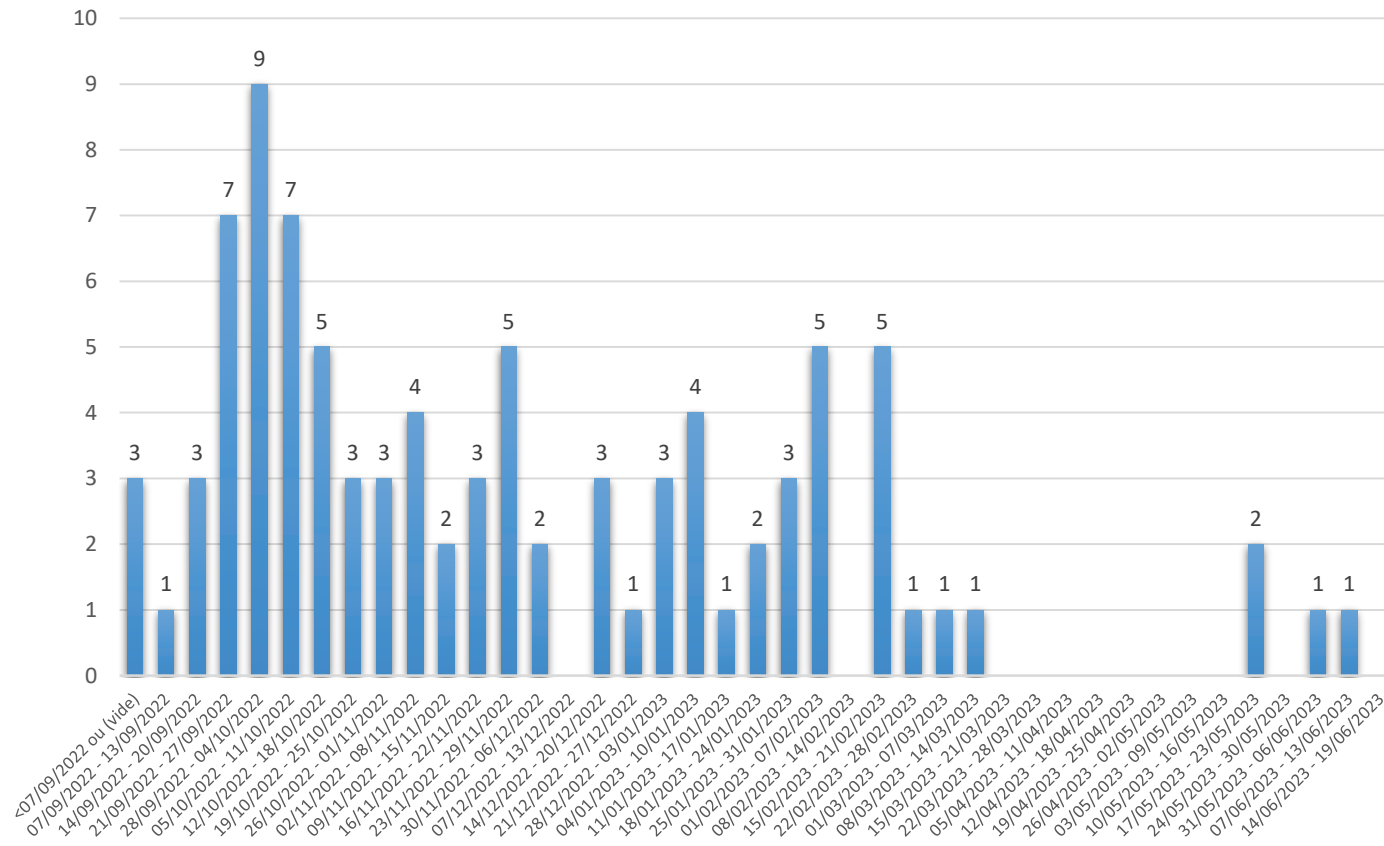


Affected species	Outbreaks
Duck	245
Turkey	46
Gallus gallus	77
several species with palmipeds	18
other species (gallus)	2
several species without palmipeds	4
goose	4
guinea fowl	3
quail	1
Total général	400

HPAI in captive birds

91 outbreaks, since 1 August 2022

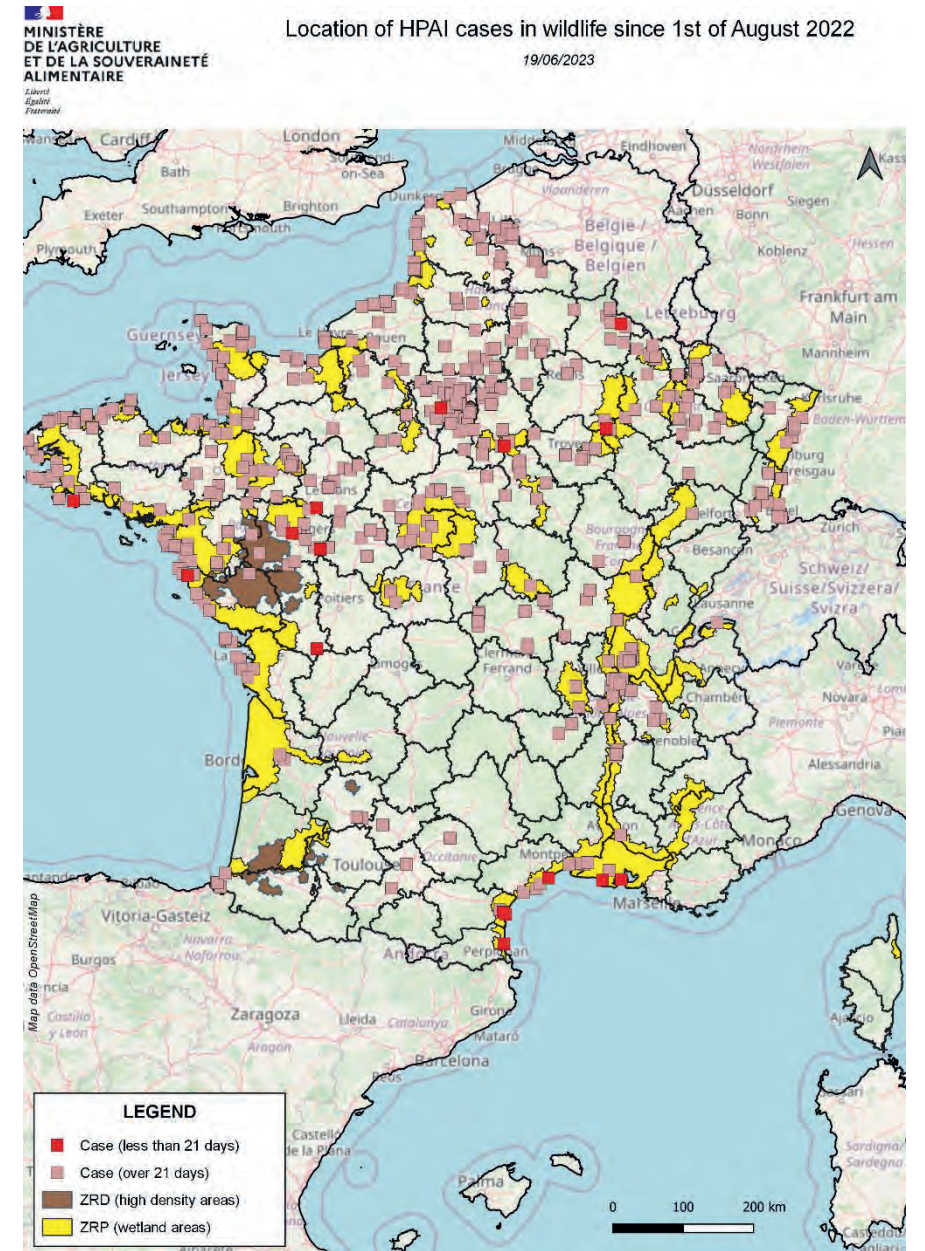
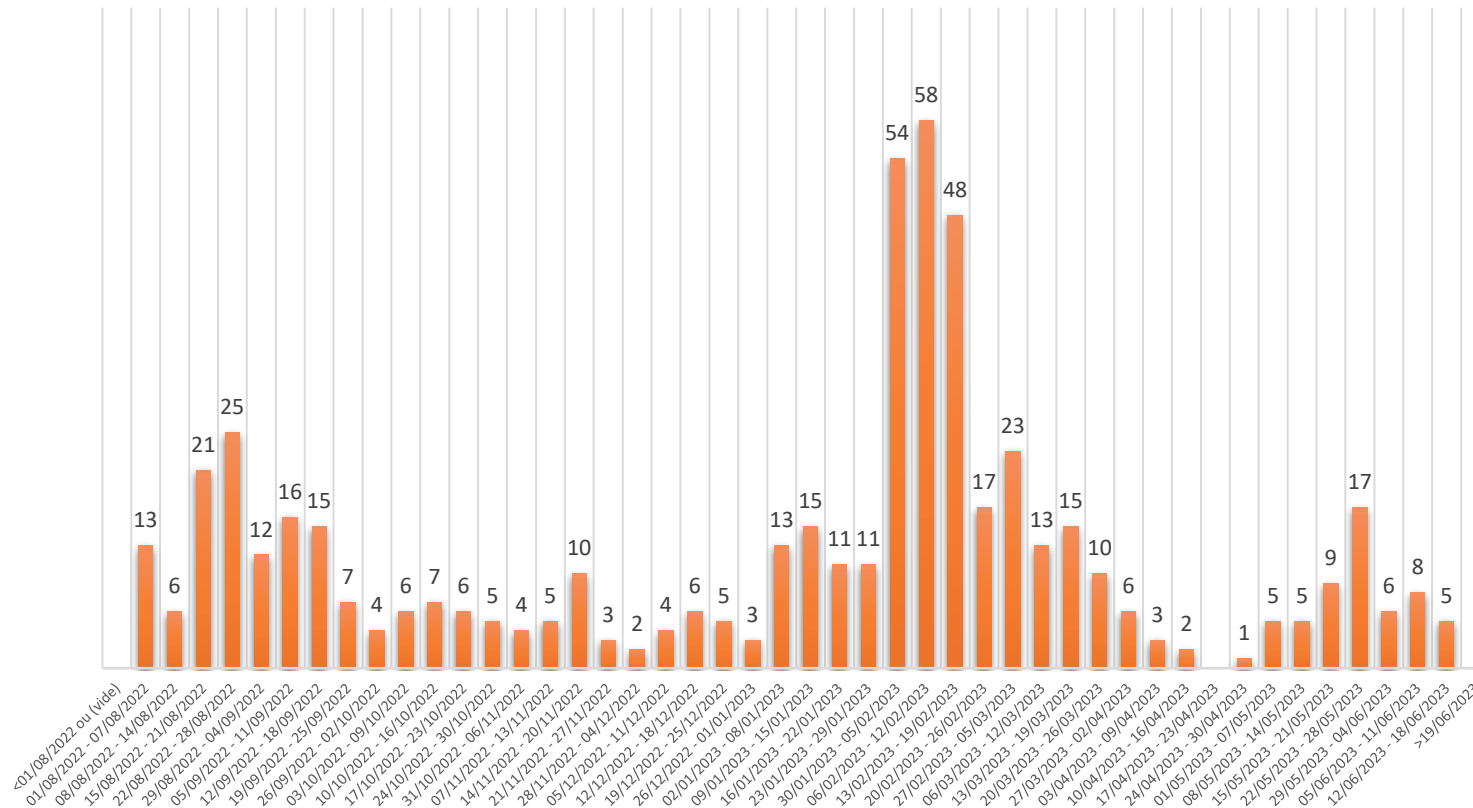
WEEKLY INCIDENCE



HPAI cases in wildlife

540 cases since 1 August 2022

WEEKLY INCIDENCE





**MINISTÈRE
DE L'AGRICULTURE
ET DE LA SOUVERAINETÉ
ALIMENTAIRE**

*Liberté
Égalité
Fraternité*

PREVENTION MEASURES

Prevention measures across the country since the lowering of risk level to moderate (26th april)

- **Early warning system**
 - Daily surveillance in farms with consideration of alert criteria
 - Vigilance reinforced in extended regulated areas (PZ, SZ, FRZ, BZ)
- **Sheltering of poultry in risk areas**
 - Risk areas are wetland areas (ZRPs) and areas with high poultry density (ZRDs)
 - All species of poultry in ZRPs ; palmipeds in ZRDs
- **Restriction on hunting activities in risk areas**
- **Prohibition of bird gathering in risk areas**



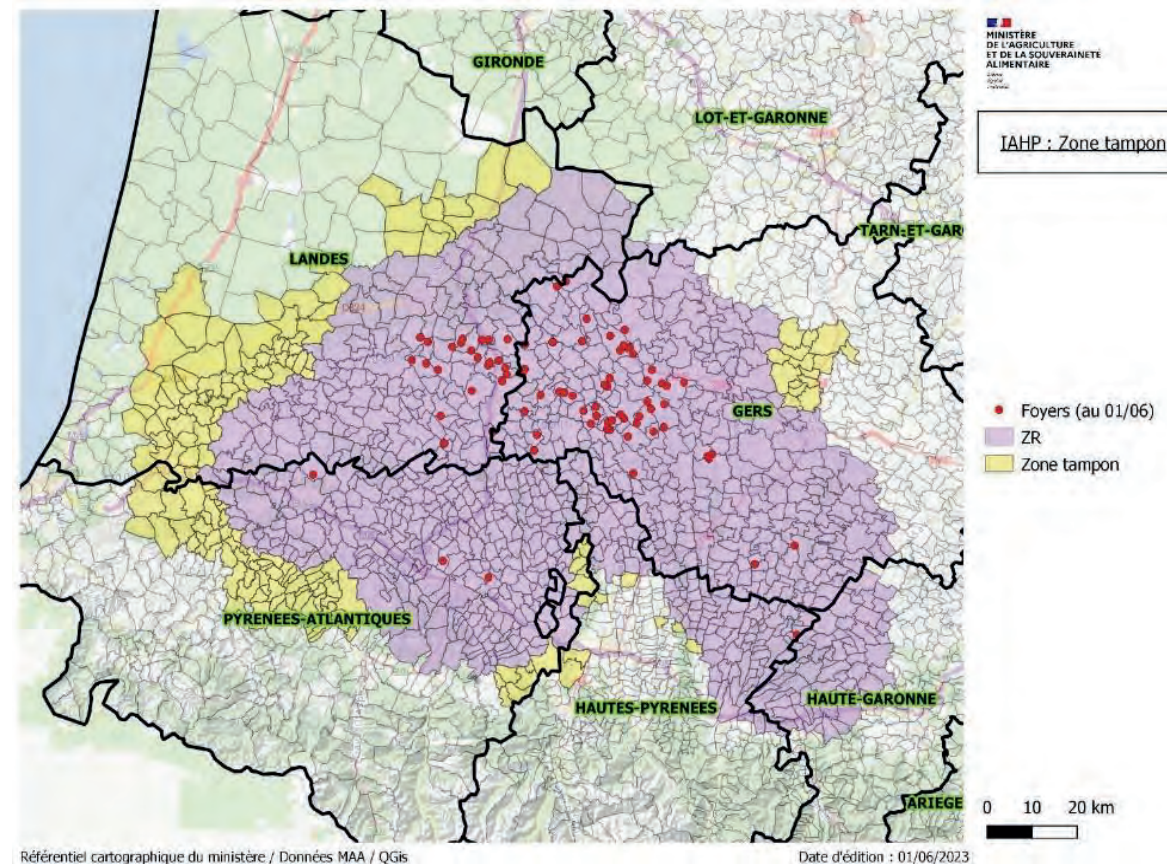
**MINISTÈRE
DE L'AGRICULTURE
ET DE LA SOUVERAINETÉ
ALIMENTAIRE**

*Liberté
Égalité
Fraternité*

CONTROL MEASURES IN SOUTH WEST

Control measures in departments 32, 40, 47, 64 and 65

- **New outbreaks in departments 32, 40, 64 and 65 since 4th May**
- **Reinforced control measures to limit the spread of the disease**
- **Restricted zones extended :**
 - Around poultry outbreaks :
 - Protection zone (PZ) 3 km
 - Surveillance zone (SZ) 10 km
 - Further restricted zone (FRZ) 20 km
 - Buffer zone (BZ) including ZRDs and others municipalities with high poultry density
 - Around cases confirmed in wildlife :
 - Infected area 20 km



ZR = Restricted zone (ZP + ZS+ZRS)
Zone tampon : Buffer zone

Control measures in departments 32, 40, 47, 64 and 65

- **Additional measures in restricted areas to complement measures prescribed by Regulation (EU) 2020/687 :**
 - **Sheltering** for all poultry species
 - **Reinforced active surveillance** in palmipeds farms :
 - Compulsory autocontrols on dead animals and in the environment on a biweekly basis in PZ, SZ, FRZ
 - Compulsory autocontrols in the environment on a weekly basis in BF
 - Compulsory autocontrols on live animals on a weekly basis in BF (sample of establishments – prevalence rate limit : 3%)
 - Compulsory specific autocontrols in the environment and on dead and live animals for reproductive stock

Control measures in departments 32, 40, 47, 64 and 65

- **Additional measures in restricted areas to complement measures prescribed by Regulation (EU) 2020/687 :**
 - **Movements :**
 - Prohibition of movement in PZ and SZ
 - 24-hour pre-movement autocontrols of poultry in FRZ and BZ
 - **Peri-focal preventive depopulation** over a radius of 10 km :
 - 1 km around an outbreak : all susceptible species
 - 1 to 10 km around an outbreak : palmipeds
 - Creation of a depopulation platform for young palmipeds
 - 2 or 3 depopulation companies
 - **Regulation of hunting activities** in PZ, SZ, FRZ

Thank you for your attention

