

**Appendix 8. Insect Resistance Monitoring in Iberian collections of
Ostrinia nubilalis (ECB): 2014 Season**

Report

Cry1Ab susceptibility in European origins of *Ostrinia nubilalis* (ECB)

- Results for 2014-2015 -

Date

22/06/2015

Testing Facility

BTL Bio-Test Labor GmbH Sagerheide
Thünenplatz 1
D-18190 Sanitz OT Groß Lüsewitz
Germany

Sponsor

Monsanto Europe SA
Avenue de Tervuren 270-272
B-1150 Brussels
Belgium

**Statement of Compliance with the Principles of
Good Experimental Practice**

The study described in this report was conducted in compliance with the most recent edition of:

- The Principles of Good Experimental Practice (GEP), (Plant Protection Products Ordinance, paragraph (5) of Article 1c, Germany).

Head of testing facility

Date / Signature: 22. June 2015 

Study director

Date / Signature: 22. June 2015 

Contents

1. Introduction	4
2. Materials and Methods	5
2.1 Insect collection	5
2.2 Insect culture	5
2.3 Bioassays	7
2.4 Statistical analysis.....	8
3. Results and Discussion	9
3.1 Collection of ECB.....	9
3.2 Susceptibility to Cry1Ab in the 2014-2015 campaign	9
3.3 Diagnostic dose	10
3.4 Exposure to MON 810 tissue (confirmatory experiment)	10
3.5 Historical susceptibility of corn borers to Cry1Ab.....	10
3.6 Susceptibility of the lab strain (G.04) to Cry1Ab	11
4. Conclusions.....	11
5. Acknowledgement.....	11
6. References.....	12
Annex I.....	14
Annex II.....	15

Tables and Figures

Table 1	<i>O. nubilalis</i> diet recipe.....	7
Table 2	<i>O. nubilalis</i> collection details for the 2014-2015 season.....	9
Table 3	Results from Probit analysis for the ECB origins collected in 2014.....	9
Table 4	Susceptibility of <i>O. nubilalis</i> neonates exposed to Cry1Ab as measured by the MIC over time for areas tested.	11
Figure 1	Dissected maize stalk with larvae.....	6
Figure 2	Corrugated cardboard with pupae.....	6
Figure 3	Growth chamber with plastic boxes containing diapausing ECB larvae.....	6
Figure 4	Oviposition cages for adult ECB.....	6
Figure 5	IDs of Bio-Ba-128 trays (tray number, field letter, well number; i.e.: 1.A.13).....	8
Figure 6	Fitted curves of susceptibility as percentage moult inhibition after seven days feeding on treated diet of ECB (collected in 2014) to the batch 2a of protein Cry1Ab (PoloPlus, LeOra Software 2002-2009).....	10

1 Introduction

Maize containing event MON 810 is genetically modified maize expressing the Cry1Ab protein derived from *Bacillus thuringiensis* subsp. *kurstaki*, and conferring protection against certain lepidopteran insect pests such as *Ostrinia nubilalis* and *Sesamia nonagrioides*. Resistance development in targeted lepidopteran pests is a potential concern arising from the widespread cultivation of MON 810 maize varieties. In order to maintain the benefits obtained from growing MON 810 maize varieties, Monsanto established an insect resistance monitoring program across Europe and in particular in areas where commercial activity of MON 810 is occurring or planned, *i.e.*, areas where the European target pests *O. nubilalis* and *S. nonagrioides* are prevalent. This monitoring program follows directions described in the plan of the industry working group on Insect Resistance Management (IRM) proposed to the Member State Competent Authorities and the European Commission (available since 2003 but published in 2007; ALCALDE et al., 2007 and subsequently updated as the EuropaBio harmonised IRM plan in September 2012). The current report focuses on the susceptibility monitoring of *O. nubilalis*.

The European corn borer (ECB), *O. nubilalis*, is native to southern Europe (BECK, 1987) and is believed to have been introduced into North America between 1909 and 1914 (VINAL, 1917), where multiple introductions have probably occurred (SHOWERS, 1993). Since then, *O. nubilalis* has rapidly spread across North America (CAFFREY & WORTHLEY, 1927; ROELOFS et al., 1985; HUDON & LEROUX, 1986). Apart from maize, more than 200 weeds and cultivated plants are known to serve as host plants for *O. nubilalis* (HODGSON, 1928; PONSARD et al., 2004). Before *Bt* maize was commercially available, *O. nubilalis* was one of the most damaging pests of maize in North America and Europe and was therefore a major target pest for control with genetically modified maize expressing *Bacillus thuringiensis* (*Bt*) proteins.

In accordance with the EuropaBio Harmonised IRM plan of September 2012 the baseline susceptibility of *O. nubilalis* to the Cry1Ab protein needs to be established after which subsequent routine monitoring for changes in susceptibility should be carried out. The objective is to detect in a timely manner shifts relative to baseline susceptibility that could result in inadequate protection of MON 810 maize varieties expressing Cry1Ab against the target species. This program will enable early detection of potential development of resistance in *O. nubilalis* if it occurs, and this will allow the proposal and implementation of additional risk mitigation measures.

Previous baseline susceptibility to the Cry1Ab protein has been established for *O. nubilalis* populations collected in different maize growing areas in Spain (GONZALEZ-NUNEZ et al., 2000, FARINÓS et al., 2004), Germany (SAEGLITZ et al., 2006) and the United States of America (MARÇON et al., 1999a, b and 2000). The European Union (EU) baseline results have been generated in areas where the MON 810 maize adoption by farmers was expected to be significant given the local abundance of the pests.

In accordance with the EuropaBio harmonized IRM plan, changes in the susceptibility of the target pests, which eventually could lead to resistance, will be reported on a biennial basis in areas where MON 810 is grown. Two exceptions were described: (1) in case the adoption of MON 810 remains below 20% in the given area, no data will be reported in future, and (2) in case MON 810 adoption equals or exceeds the theoretical maximum of 80% (due to the required 20% refuge implementation), susceptibility monitoring will be performed on a yearly basis. Samples were not taken in Northeast and Central Iberia since they were the subject of last year's report. Therefore, the current report focuses on the resistance monitoring of *O. nubilalis* in Southwest Iberia, the area where adoption of MON 810 was greater than 20%.

The objectives of the current report on the 2014 maize growing season are:

- 1) To determine the susceptibility of *O. nubilalis* in maize growing areas in Southwest Iberia to the Cry1Ab protein expressed in MON 810 maize varieties.
- 2) In addition, preliminary studies were conducted to explore the feasibility of monitoring resistance of *O. nubilalis* to Cry1Ab using the diagnostic dose method. This method was established to be the most efficient method and as effective as the dose-response method to detect changes in susceptibility to Cry proteins (SIMS et al., 1996).

2 Materials and Methods

2.1 Insect collection

The three areas identified in the entire EU where adoption of MON 810 in 2014 was expected to be greater than 20% are the Ebro valley (defined in earlier reports as Northeast Iberia), Central Iberia (particularly the province of Albacete) and the Southwest Iberia area. For these areas data on the susceptibility of *O. nubilalis* to Cry1Ab have been collected since 2007. In 2014, it was the aim to collect samples from three sites that were separated by at least 50 km in Southwest Iberia. *O. nubilalis* samples were collected as larvae in naturally infested fields or refuges to MON 810 maize varieties fields following the Standard Operating Procedures (SOPs) as attached to the EuropaBio harmonized IRM plan. Collections were made by dissecting maize stalks in the field before harvest or in spring after diapause. If more than one larva per stalk was found, only one was taken to avoid collecting siblings (Figure 1). The aim was to collect 300 healthy larvae from the area sampled.

2.2 Insect culture

Field-collected *O. nubilalis* larvae were placed in plastic boxes containing corrugated cardboard and maintained in a growth chamber at 25°C, 90% RH and a photoperiod of 20:4h (L:D) on an agar-based wheat germ diet (Figure 2 and 3, Table 1). If the larvae did not pupate after a period of two weeks, they were assumed to have entered diapause and were transferred to another climatic chamber maintained at 8 ± 2°C, 70 ± 5% RH, and a photoperiod of 0:24h (L:D) until the time for collective emergence of adults in May.

O. nubilalis larvae from different sampling sites in Southwest Iberia separated by at least 50 km were analysed. Collected insects from different sites within the area tested were reared or kept under diapause separately to avoid cross contamination with *Beauveria* sp. or *Nosema* sp.

Larvae surviving the diapause period were transferred to fresh containers and placed in incubators where the temperature was raised gradually from 15-25°C, humidity of 90% RH and a photoperiod of 20:4h (L:D) over a period of 10 days and kept at 25°C, humidity of 90% RH and a photoperiod of 20:4h (L:D) thereafter. Emerging adults were transferred to oviposition cages (Figure 4) and fed 15% honey water to increase fecundity (LEAHY & ANDOW, 1994). The insides of the cages were covered with filter paper (oviposition medium) that was changed twice a week. Egg masses were cut off and transferred to petri dishes with moistened filter paper. If necessary, egg masses were stored for up to seven days at 8 ± 2°C. Incubating egg masses were placed in an incubator for 20 h at 25 ± 2°C, 4 h at 20 ± 2°C, 90% RH and a photoperiod of 20:4h (L:D) (GUTHRIE et al., 1985).



Figure 1. Dissected maize stalk with larvae



Figure 3. Growth chamber with plastic boxes containing diapausing ECB larvae



Figure 2. Corrugated cardboard with pupae

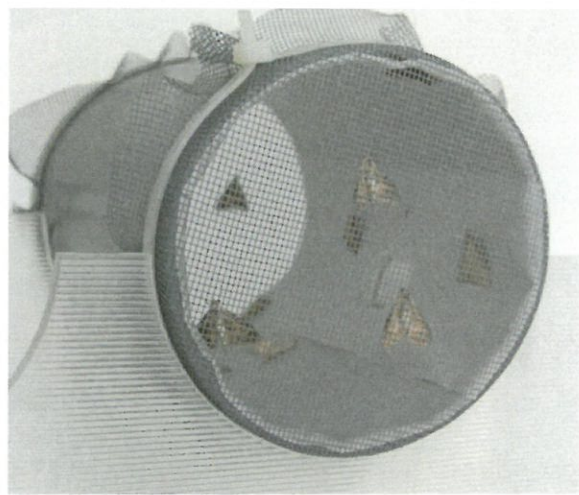


Figure 4. Oviposition cages for adult ECB

2.3 Bioassays

2.3.1 Susceptibility to Cry1Ab

Two batches of Cry1Ab protein have been used since the start of the MON 810 monitoring plan. The batch 2 (that was used for the campaign 2012-2013) was provided by Monsanto and was stored at -80°C until used (NBR: 11247229, 31/01/2012; concentration 1.64 mg/ml in 50 mM bicarbonate buffer, pH 10.25). To prepare the test concentrations, a bicarbonate buffer (25 mmol/l) with pH 10.5 was used. As this batch had reached the date of expiry a new batch (2a) was provided by Monsanto. The batch 2a (NBR: 11247229, 31/01/2015; concentration 1.64 mg/ml in 50 mM bicarbonate buffer, pH 10.25) was also stored at -80°C until being used. To prepare the test concentrations, a bicarbonate buffer (50 mmol/l) with pH 10.25 was used. The bioassays were performed in 128 well trays (Bio-Ba-128, Color-Dec, Italy). In each cell 1 ml of artificial diet was dispensed (see Table 1 for recipe). After the diet solidified, 100 μl of protein solution was applied to the surface and allowed to dry overnight at room temperature. To avoid contamination the trays were covered with a sheet of filter paper. Egg masses of each sampling site (offspring of field-collected larvae) were incubated and neonate larvae, within 12 h after hatching, were transferred to the cells. A single neonate was placed in each cell and confined with a cover (Bio-Cv-16, Color-Dec Italy) (Figure 5). Eight concentrations (0.2–28.22 ng Cry1Ab/cm²) and a control (bicarbonate buffer) were tested for each population. Field collected insects used in bioassays came from pooled samples of healthy insects collected in different fields within an area. For each collection area, > 30 larvae were tested for each Cry1Ab concentration and 64 larvae for fed the control diet.

All assays were conducted at 25°C , 70% RH and a photoperiod of 0:24h (L:D). After seven days, larval mortality and developmental stage were recorded. Larvae that had not grown beyond first instar would not survive under field conditions (e.g. SIEGFRIED et al., 2000). As a result, the criterion for mortality used in this study accounts for both death and complete moulting (or growth) inhibition.

Table 1. *O. nubilalis* diet recipe

Component	Amount	Provided
Distilled H ₂ O	680 ml	
Benzoic acid	1 g	Carl Roth GmbH & Co. KG
Sorbic Acid	1 g	BioServ
Nipagin (methyl-paraben)	1 g	BioServ
Agar	16 g	Carl Roth GmbH & Co. KG
Maize powder	112 g	Gut & Gerne, BZ Bio-Zentrale
Wheatgerm	28 g	Frießinger Mühle GmbH
Brewer's yeast	30 g	Biolabor GmbH & Co.KG
Fumidil B	1 g	CEVA Salud Animal, S.A.
Ascorbic acid	3 g	BioServ
Vanderzant vitamin mix	2 g	BioServ

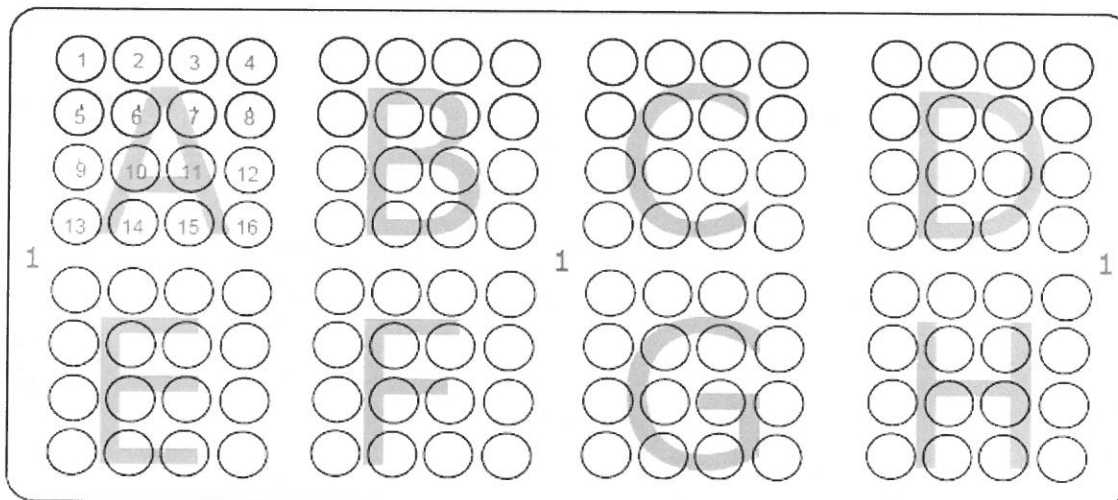


Figure 5. IDs of Bio-Ba-128 trays (tray number, field letter, well number; e.g.: 1.A.13)

2.3.2 Diagnostic dose

For the calculation of the diagnostic dose the data for all experiments with ECB from 2005-2012 were used. These include ECB collection in fields from Czech Republic, France, Germany, Italy, Panonia, Poland, Portugal, Romania and Spain representing the responses of 11,502 larvae. Using the average of the moulting inhibition concentrations (MIC) for 99% (MIC_{99}) the diagnostic dose for ECB larvae from Europe was calculated to be 28.22 ng/cm², and its half 14.16 ng Cry1Ab/cm². Data from bioassays with more than 20% response at the control after exposure to Cry1Ab have been neglected.

2.4 Statistical analysis

All statistical analyses were done using the computer program SYSTAT, Version 11.0, except for dose-response analysis where PoloPlus 1.0 was used (LeOra Software Company). The results obtained for growth inhibition at different concentrations of Cry1Ab were adjusted by probit weighted regression lines, and moulting inhibition concentrations (MICs) for 50% (MIC_{50}) and 90% (MIC_{90}) of each origin tested were estimated together with their 95% confidence limits using the POLOPC programme (LeOra Software, 1987). Mortality of the control must be below 20% for *O. nubilalis*, in order to be able to include the bioassay in the statistical analysis.

The measure of how well the data (response of *O. nubilalis* to different concentrations of protein) fit the assumptions of the Probit model is goodness-of-fit. To test goodness-of-fit, responses predicted by the Probit model were compared with responses actually observed in the bioassay (χ^2 test).

Hypothesis tests are essential for the interpretation of bioassay results. Three possible outcomes of comparing Probit regression lines are that lines are parallel but not equal (*i.e.*, different intercepts), lines are parallel and equal, or lines are neither parallel nor equal. When lines are parallel but not equal, their slopes are not significantly different. This means that changes in activity per unit change in rate are the same. If regression lines are equal, they do not differ in either intercept or slope, meaning the populations being compared are equally affected.

3 Results and Discussion

3.1 Collection of ECB

The area where ECB larvae were collected in 2014 is shown in Table 2, and the location is displayed on a map in Annex I.

Table 2. *O. nubilalis* collection details for the 2014-2015 season.

Area	ID	Country	Collection site ^a	Collected	Eggs	Larvae
lab ^b	G 04	Germany		2005	x	
IbSW	EsSW.01_2014	Spain	ES-06800 Mérida (BA) (N 38°55'42.6" W 006°24'18.3")	09.2014		246 ^d
	P.01_2014	Portugal	P-7350 Elvas (N 38°51'38.3" W 007°05'19.7")	09.2014		107 ^d
	EsSw.02_2014	Spain	ES-10816 El Batán (CC) (N 39°58'01" W 006°20'58")	09.2014		29 ^d

^a Spanish provinces: BA = Badajoz, CC = Cáceres; ^b reference strain

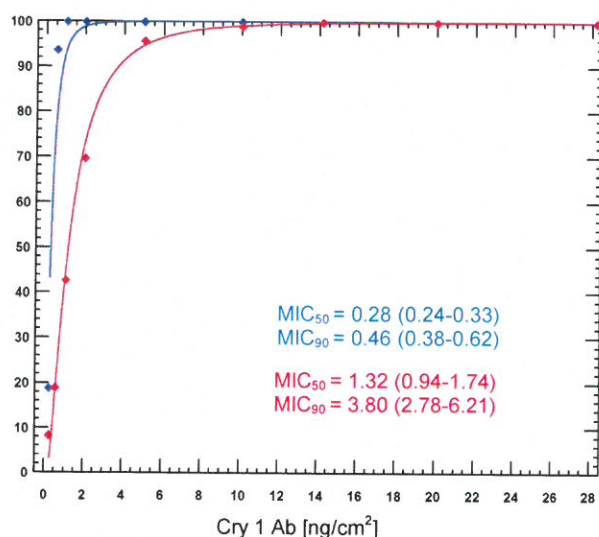
3.2 Susceptibility to Cry1Ab in the 2014-2015 campaign

To determine the susceptibility of the field collections as well as the lab strain to Cry1Ab, larval mortality and larval moult inhibition data at the different concentrations of Cry1Ab tested were analyzed by Probit analysis. Fitted curves of susceptibility to the Cry1Ab protein of laboratory and field collections of *O. nubilalis* were generated taking into account the moulting inhibition concentration of neonate larvae after seven days feeding on treated diet (Figure 6). Moulting inhibition concentrations at 50% (MIC₅₀) and 90% (MIC₉₀) for *O. nubilalis* collected in a particular area are provided in Table 3. The significance of differences in susceptibility between the laboratory strain (originally collected in Niedernberg, Germany, and kept in culture since 2005) and the field collected insects was tested by determining the 95% confidence limits (CI) of MIC ratios (MICR) (ROBERTSON et al., 2007). The moulting inhibition concentrations are considered significantly different from the laboratory strain ($P < 0.05$) when the MICR 95% confidence limits do not include 1. The MIC₅₀ and MIC₉₀ values for field-collections of ECB from IbSW differed significantly to the reference strain in their susceptibility to Cry1Ab/cm² (Figure 6) as indicated by the lack of inclusion of 1 in their MICR 95% confidence limits.

Table 3. Results from Probit analysis for the ECB origins collected in 2014.

Area	n	Slope ± SE	χ^2	D.f.	MIC ₅₀ (95% CI) ^a	MIC ₉₀ (95% CI) ^a
lab	352	6.214 ± 1.095	0.01	7	0.28 (0.24-0.33)	0.46 (0.38-0.62)
IbSW	1055	2.798 ± 0.240	84.07	25	1.32 (0.94-1.74)*	3.80 (2.78-6.21)*

^a 50% and 90% moulting inhibition concentrations (MIC₅₀ and MIC₉₀) and their 95% confidence intervals (95%CI) are expressed in ng Cry1Ab/cm². * Moulting inhibition concentrations are significantly different ($P < 0.05$) to the laboratory strain.



	MIC ratios	
	(MICR ₅₀)	Conf. limits
G04 vs. IbSW	0.214	(0.172-0.267)
	(MICR ₉₀)	
G04 vs. IbSW	0.120	(0.089-0.162)

Figure 6. Fitted curves of susceptibility as percentage moult inhibition after seven days feeding on treated diet of ECB (collected in 2014) to the batch 2a of protein Cry1Ab (PoloPlus, LeOra Software 2002-2009).

Reference laboratory strain (G.04, blue); Iberia Southwest (IbSW, red)

3.3 Diagnostic dose

Not a single larva tested in 2014 survived neither the diagnostic dose for ECB larvae from Europe (determined to be 28.22 ng/cm²) nor a dosage representing 50% of diagnostic dose.

3.4 Exposure to MON 810 tissue (confirmatory experiment)

It was planned that all *O. nubilalis* larvae from field collections that survived the bioassay at the highest dose should be assembled, transferred to plastic boxes in groups of approximately 50 larvae, provided with newly detached MON 810 maize leaves without the central nerve, and fed *ad libitum* to record any survivors. As for the season reported here, no surviving larvae were found after 10 days and confirmatory experiments were not necessary.

3.5 Historical susceptibility of corn borers to Cry1Ab

During 2008–2014, 31 samples of ECB from different areas were analyzed. Their susceptibility to Cry1Ab is shown in Table 4.

Table 4. Susceptibility of *O. nubilalis* neonates exposed to Cry1Ab as measured by the MIC over time for areas tested.

Area	Year	MIC ₅₀ (95% CI) ^a	MIC ₉₀ (95% CI) ^a
Iberia Central	2009 ¹	3.09 (2.03-4.33)	11.98 (8.12-22.31)
	2011 ²	1.56 (1.27-1.91)	4.04 (3.12-5.91)
	2013 ³	2.40 (2.04-2.83)	6.38 (5.18-8.34)
Iberia Northeast	2008 ¹	7.03 (4.89-10.03)	23.91 (15.76-46.84)
	2009 ¹	6.40 (5.32-7.75)	13.68 (10.77-20.02)
	2011 ²	1.79 (1.54-2.07)	4.19 (3.45-5.48)
	2013 ³	2.48 (2.03-3.02)	5.41 (4.27-7.61)
Iberia Southwest	2008 ¹	3.39 (2.94-3.89)	6.90 (5.79-8.89)
	2010 ¹	5.76 (4.38-7.84)	11.85 (8.53-23.52)
	2012 ²	4.08 (2.99-5.50)	8.69 (6.30-15.56)
	2014 ³	1.32 (0.94-1.74)	3.80 (2.78-6.21)

MIC moulting inhibition concentrations, CI confidence interval, ^a ng Cry1Ab/cm²; ¹ batch 1 of Cry1Ab, ² batch 2 of Cry1Ab, ³ batch 2a of Cry1Ab

3.6 Susceptibility of the lab strain (G.04) to Cry1Ab

The laboratory strain G.04 was kept in sub-strains since 2011 and checked regularly for performance (size of adults, size of egg masses, and development of larvae). In 2011, by performing a PCR based method (SAEGLITZ, 2004), infection with *Nosema* was identified for some individuals in one sub-strain, which have been eliminated. One sub-strain was used for the subsequent years until now. This sub-strain is producing good-quality egg masses and normal-sized adults. A PCR analysis (done in March 2015) showed that the reference strain G.04 kept since 2011 is not infected with microsporidia or with *Nosema* (see Appendix II).

4 Conclusions

In 2014, 1 area with 3 samples of ECB collected in 2014 was analysed. Thus far, susceptibility to Cry1Ab has been assessed for one laboratory colony and ECB collected in maize fields in Southwest Iberia. ECB larvae were exposed to artificial diet treated with increasing Cry1Ab concentrations, and mortality and growth inhibition were evaluated after 7 days. Variation in Cry1Ab susceptibility (MIC₅₀ and MIC₉₀) of ECB collected in the Southwest Iberian fields during the campaign 2014-2015 was 4.11-fold and 3.01-fold, respectively. Variation in Cry1Ab susceptibility (MIC₅₀ and MIC₉₀) of field samples in comparison with the lab strain was up to 10.86-fold and 11.12-fold, respectively. Significant differences in *Bt* susceptibility between ECB from Southwest Iberia and the reference strain were found. The results indicate that the observed variation in susceptibility reflects natural variation in *Bt* susceptibility among ECB origins. Any evidence for a decrease of Cry1Ab susceptibility of ECB during the monitoring duration could not be detected.

5 Acknowledgement

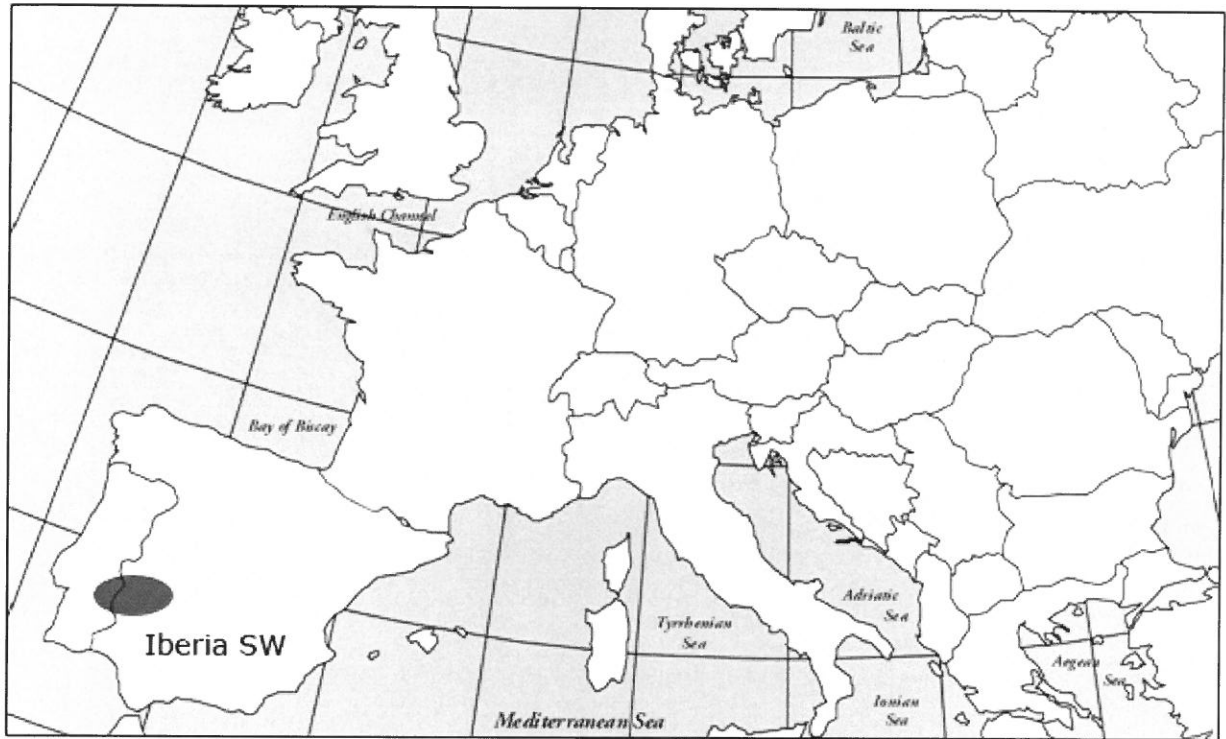
This report presents the results of research only and would not be possible without the kind help of all those who supplied insects: the Spanish group around Félix Ortega Alonso and Gema Pérez Farinos (CSIC, Madrid, ES).

6 References

- BECK, S.D., 1987. Developmental and seasonal biology of *Ostrinia nubilalis*. *Agric Zool Rev* **2**: 59-96.
- CAFFREY, D. J., & WORTHLEY, L.H., 1927. A progress report on the investigations of the European corn borer. USDA Bull. 1476.
- FARINÓS, G.P., DE LA POZA, M., HERNANDEZ-CRESPO, P., ORTEGO, F. & CASTAÑERA, P., 2004. Resistance monitoring of field populations of the corn borers *Sesamia nonagrioides* and *Ostrinia nubilalis* after 5 years of Bt maize cultivation in Spain. *Ent. Experimentalis et Applicata* **110**: 23-30.
- GUTHRIE WD, ROBBINS JC & JARVIS JL (1985) *Ostrinia nubilalis*. In: Handbook of insect rearing. Volume 1. SINGH, P. & R.F. MOORE (eds.) Elsevier, Amsterdam, Oxford, New York, Tokyo, pp. i-viii; 488.
- HODGSON, 1928: The host plants of the European corn borer in New England. USDA Tech Bull **77**: 1-63.
- HUDON, M., & LEROUX, E.J., 1986. Biology and population dynamics of the European corn borer (*Ostrinia nubilalis*) with special reference to sweet corn in Quebec, Canada. I. Systematics, morphology, geographical distribution, host range, economic importance. *Phytoprotection* **67**: 39-54.
- LEAHY, T.C., & ANDOW, D.A., 1994. Egg weight, fecundity, and longevity are increased by adult feeding in *Ostrinia nubilalis* (Lepidoptera, Pyralidae). *Annals of the Entomological Society of America* **87**: 342-349.
- LEORA SOFTWARE, 1987. POLO-PC. A user's guide to probit and logist analysis. LeOra Software, Berkley, CA.S
- MARÇON, P.C.R. G., TAYLOR, D.B., MASON, C.E., HELLMICH, R.L., & SIEGFRIED, B.D., 1999a. Genetic similarity among pheromone and voltinism races of *Ostrinia nubilalis* Hübner (Lepidoptera: Crambidae): *Insect Molecular Biology*, **8** (2): 213-221.
- MARÇON, P.C.R.G., YOUNG, L.J., STEFFEY, K.L. & SIEGFRIED, B.D., 1999b. Baseline susceptibility of European corn borer (Lepidoptera: Crambidae) to *Bacillus thuringiensis* toxins. *Journal of Economic Entomology* **92**: 279-285.
- MARÇON, P.C.R.G., SIEGFRIED, B.D., SPENCER, T. & HUTCHISON, W.D. 2000. Development of Diagnostic Concentrations for Monitoring *Bacillus thuringiensis* Resistance in European Corn Borer. (Lepidoptera: Crambidae). *Journal of Economic Entomology* **93**: 925-930.
- PONSARD, S., BETHENOD, M.-T., BONTEMPS, A., PELOZUELO, L., SOUQUAL, M.-C., & BOURGUET, D., 2004. Carbon stable isotopes: a tool for studying the mating, oviposition, and spatial distribution of races of European corn borer, *Ostrinia nubilalis*, among host plants in field. *Can J Zool* **82**: 1177-1185.
- ROELOFS, W.L., DU, J.-W., TANG, X.-H., ROBBINS, P.S., & ECKENRODE, C.J., 1985. Three European corn borer populations in New York based on sex pheromones and voltinism. *J. Chem. Ecol.* **11**: 829-836.
- SAEGLITZ, C., 2004. Untersuchungen der genetischen Diversität von Maiszünsler-Populationen (*Ostrinia nubilalis*, Hbn.) und ihrer Suszeptibilität gegenüber dem *Bacillus thuringiensis* (Bt)-Toxin als Grundlage für ein Resistenzmanagement in Bt-Maiskulturen *Journal of Economic Entomology* **99**: 1768-1773.

- SAEGLITZ, C., BARTSCH, D., EBER, S., GATHMANN, A., PRIESNITZ, K.U. & SCHUPHAN, I., 2006. Monitoring the Cry1Ab susceptibility of European corn borer in Germany. PhD thesis RWTH Aachen (unpublished): 166 pp.
- SHOWERS, W.B., 1993. Diversity and variation of European corn borer populations. In: Evolution of Insect Pests, KIM, K.C. & B.A. MCPHERON (eds.) (John Wiley and Sons) New York, pp. 287-309.
- SIEGFRIED, B.D., SPENCER, T. & NEARMAN, J., 2000. Baseline Susceptibility of the Corn Earworm (Lepidoptera: Noctuidae) to the Cry1Ab Toxin from *Bacillus thuringiensis*. Journal of Economic Entomology **93**: 1265-1268.
- SIMS, S.B., GREENPLATE, J.T., STONE, T.B., CAPRIO, M.A. & GOULD, F., 1996. Monitoring strategies for early detection of Lepidoptera resistance to *Bacillus thuringiensis* insecticidal proteins. In: Molecular Genetics and Evolution of Pesticide Resistance, BROWN, T.M. (ed.). ACS Symposium Series No. 645, Washington, DC, pp. 229-242.
- VINAL, S.C., 1917. The European corn borer, *Pyrauta nubilalis* Hübner, a recent established pest in Massachusetts. Massachusetts Agric Exp Stn Bull **178**: 147-152.

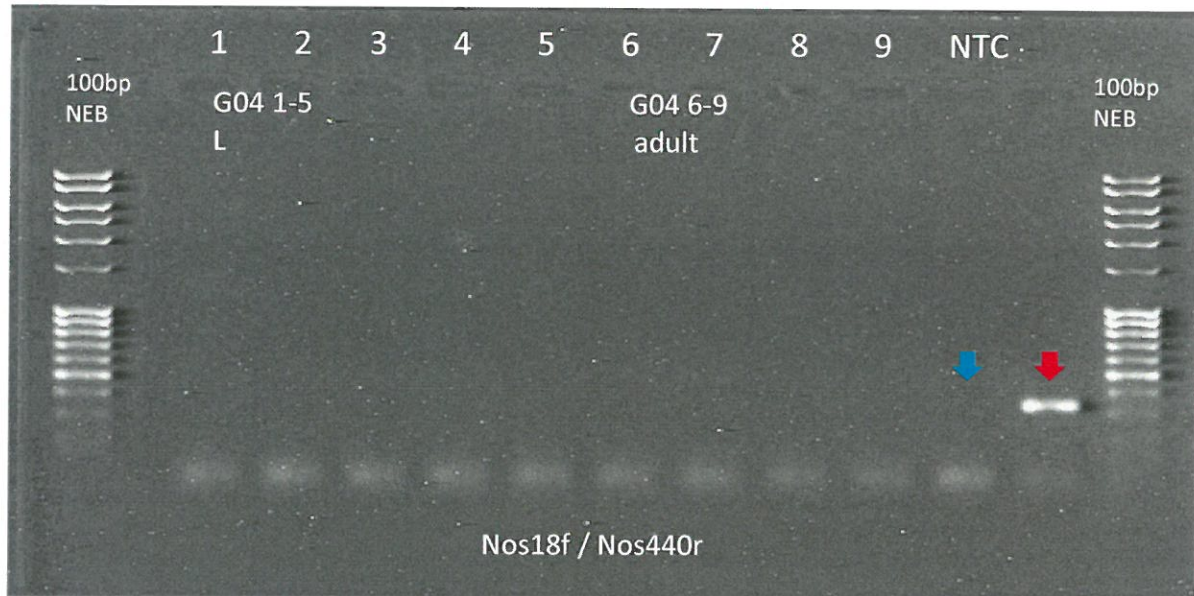
Annex I
Areas of collection activities for ECB in 2014



Area where ECB was sampled in 2014 (Iberia Southwest)

Annex II

Proof for stability and quality of the pest insect lab strain



PCR analyses with different markers for checking if the reference strain of ECB (G.04) is infected with *Nosema* (according to SAEGLITZ, 2004).

Red arrow: positive control; blue arrow: negative control.