

05/10/2022

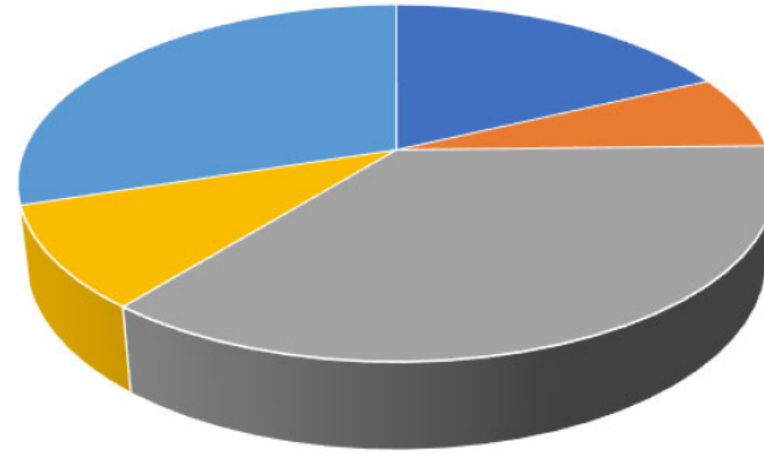
Review of the EFSA's bee Guidance Document

Senior Scientific Officer,
Pesticide Unit, EFSA

- Co
- Co
- Re
- Re
- Re
- Re

LIVE

Link to the comments:
<https://open.efsa.europa.eu/consultations/a0c7U000001MVM9QAO?search=bee>



- Other
- EFSA Registered Stakeholder
- Public Authority in EU Member State
- Consultant
- Non-Governmental Organisation (NGO)

BREAKING NEWS

~1500 COMMENTS ON THE DRAFT

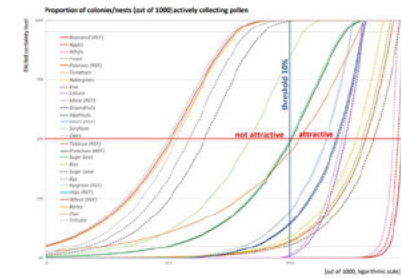
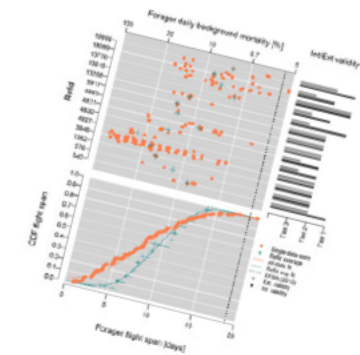
11:13

EFSA GOT ABOUT 1500 COMMENTS FOR THEIR NEW BEE GD FROM THE PC

Exposure
Exposure
Exposure

Execution of the ToRs of the mandate

- Consider feedback from stakeholders
- Consider SPG from RM
- Review bee background mortality
- Review crop attractiveness
- Review RA methodologies
- Review requirements for higher tier



- Scope

for Regulation (EC) 1107/2009 for direct effects and with the focus on chemicals



- Dust drift

progress on the draft GD on seed treatments is still awaited



Main changes from 2013

- New SPG
- Water scenarios reconsidered
- Exposure estimations updated
- Detailed guidance for Tier 2 options
- Hazard characterization reconsidered
- Extrapolation beyond tested range offered
- Extrapolation between species updated
- 'accumulative toxicity' (TRT) reconsidered
- RA method reconsidered
- Clear workflow for sublethal effects
- Strategy for higher tier tests
- Approach for statistics reconsidered

Main changes from 2013

- New SPG
- Water scenario reconsidered
- Exposure estimations updated
- Detailed guidance for Tier 2 options
- Hazard characterization reconsidered
- Extrapolation beyond tested range offered
- Extrapolation between species updated
- 'accumulative toxicity' (TRT) reconsidered
- RA method reconsidered
- Clear workflow for sublethal effects
- Strategy for higher tier tests
- Approach for statistics reconsidered

Dimensions	Honey bees	Bumble bees	Solitary bees
Ecological Entities	Colony	Colony	Population
Attribute	Colony strength	Colony strength	Population abundance
Magnitude	≤ 10%	Undefined	Undefined
Temporal scale	Any time	Undefined	Undefined
Spatial scale	Edge of field	Edge of field	Edge of field

- New SPG
 - Water scenarios reconsidered
 - Exposure estimations updated
 - Detailed guidance for Tier 2 options
 - Hazard characterization reconsidered
 - Extrapolation beyond tested range offered
 - Extrapolation between species updated
 - 'accumulative toxicity' (TRT) reconsidered
 - RA method reconsidered
 - Clear workflow for sublethal effects
 - Strategy for higher tier tests
 - Approach for statistics reconsidered
- Literature and existing field studies have been analysed
 - physiological needs
 - importance of exposure via water
 - practical issues
 - The conclusion is relevant for the context of this guidance document (including the SPG and the ExAG)

- New SPG
- Water scenarios reconsidered
- Exposure estimations updated
- Detailed guidance for Tier 2 options
- Hazard characterization reconsidered
- Extrapolation beyond tested range offered
- Extrapolation between species updated
- 'accumulative toxicity' (TRT) reconsidered
- RA method reconsidered
- Clear workflow for sublethal effects
- Strategy for higher tier tests
- Approach for statistics reconsidered

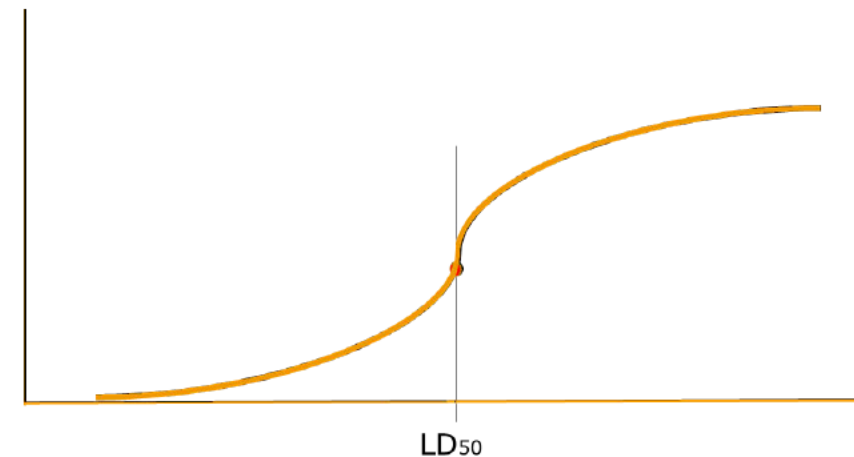
- **New exposure models**
 - reparameterization of key parameters (data collection, EKE)
 - new parameters involved (Bsf, PFF, LF)
- **Multiple applications considered**
- **Pre-flowering and during flowering applications differentiated**

Main changes from 2013

- New SPG
 - Water scenarios reconsidered
 - Exposure estimations updated
 - Detailed guidance for Tier 2 options
 - Hazard characterization reconsidered
 - Extrapolation beyond tested range offered
 - Extrapolation between species updated
 - 'accumulative toxicity' (TRT) reconsidered
 - RA method reconsidered
 - Clear workflow for sublethal effects
 - Strategy for higher tier tests
 - Approach for statistics reconsidered
- Clear list of parameters that might be refined
 - Guidance/considerations for the methods of refinements provided
 - Clear guidance for the 'exposure field studies'

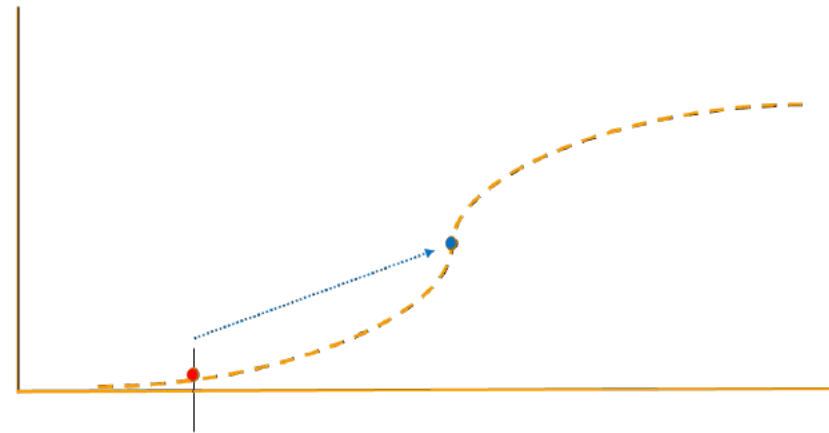
- New SPG
- Water scenarios reconsidered
- Exposure estimations updated
- Detailed guidance for Tier 2 options
- Hazard characterization reconsidered
- Extrapolation beyond tested range offered
- Extrapolation between species updated
- 'accumulative toxicity' (TRT) reconsidered
- RA method reconsidered
- Clear workflow for sublethal effects
- Strategy for higher tier tests
- Approach for statistics reconsidered

- Full dose-response to be considered
 - median lethal dose (LD_{50}/LDD_{50})
 - slope



- New SPG
- Water scenarios reconsidered
- Exposure estimations updated
- Detailed guidance for Tier 2 options
- Hazard characterization reconsidered
- Extrapolation beyond tested range offered
- Extrapolation between species updated
- 'accumulative toxicity' (TRT) reconsidered
- RA method reconsidered
- Clear workflow for sublethal effects
- Strategy for higher tier tests
- Approach for statistics reconsidered

- **Worst-case slope agreed**
 - limit tests
 - technical issues with testing (e.g. solubility)

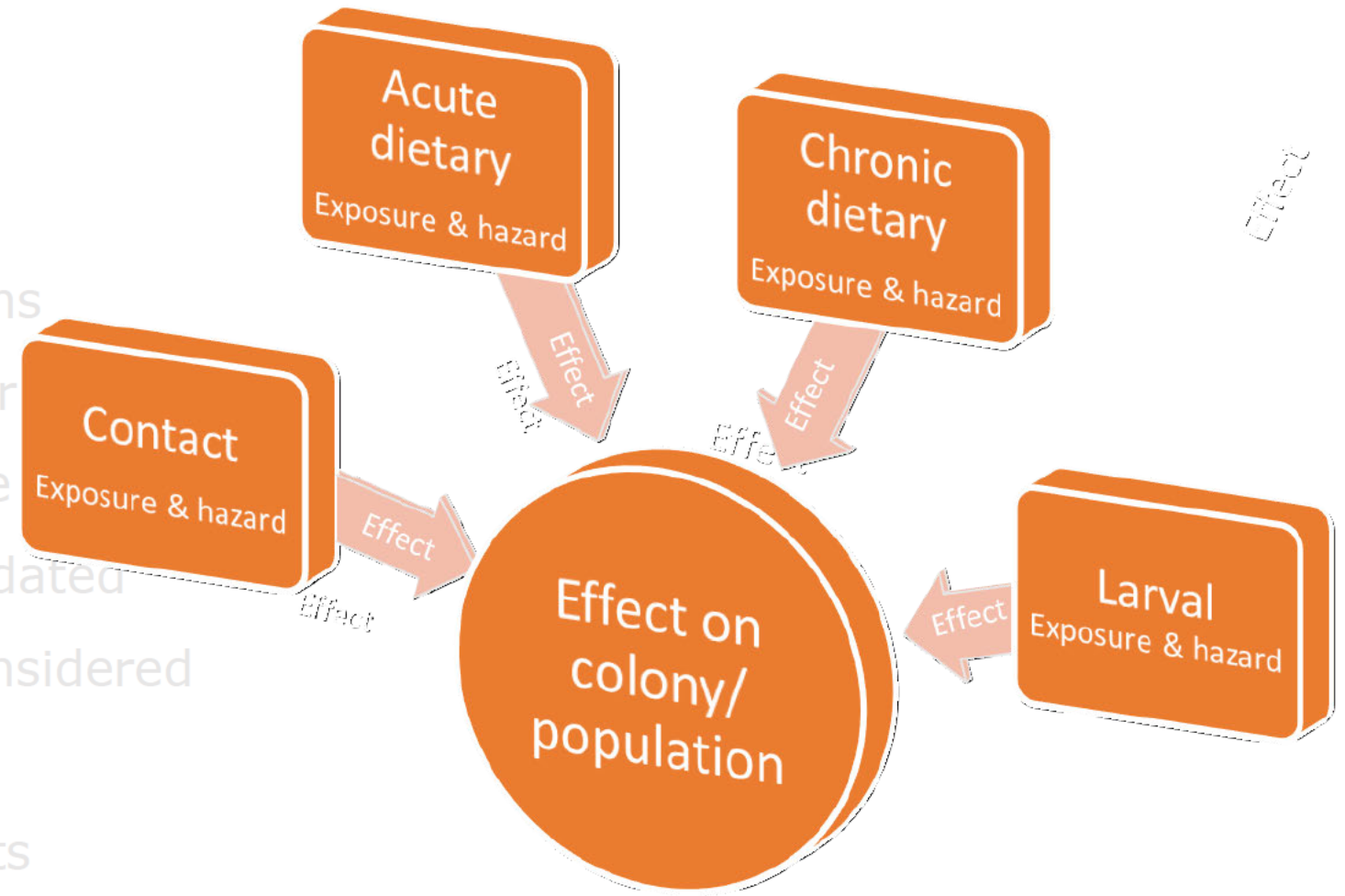


- New SPG
 - Water scenarios reconsidered
 - Exposure estimations updated
 - Detailed guidance for Tier 2 options
 - Hazard characterization reconsidered
 - Extrapolation beyond tested range offered
 - Extrapolation between species updated
 - 'accumulative toxicity' (TRT) reconsidered
 - RA method reconsidered
 - Clear workflow for sublethal effects
 - Strategy for higher tier tests
 - Approach for statistics reconsidered
- Separate factors to extrapolate from HBs to
 - small bw BB
 - small bw SB
 - Extrapolation within the bee groups
 - *B. terrestris* to small bw BB
 - *Osmia spp.* to small bw SB

- New SPG
 - Water scenarios reconsidered
 - Exposure estimations updated
 - Detailed guidance for Tier 2 options
 - Hazard characterization reconsidered
 - Extrapolation beyond tested range offered
 - Extrapolation between species updated
 - 'accumulative toxicity' (TRT) reconsidered
 - RA method reconsidered
 - Clear workflow for sublethal effects
 - Strategy for higher tier tests
 - Approach for statistics reconsidered
- Starting point is the existing chronic study
 - Elaborated workflow with different steps and options
 - Considerations for life-long effects on
 - summer bees
 - winter bees

Main changes from 2013

- New SPG
- Water scenarios reconsidered
- Exposure estimations updated
- Detailed guidance for Tier 2 options
- Hazard characterization reconsidered
- Extrapolation beyond tested range
- Extrapolation between species updated
- 'accumulative toxicity' (TRT) reconsidered
- RA method reconsidered
- Clear workflow for sublethal effects
- Strategy for higher tier tests
- Approach for statistics reconsidered



Main changes from 2013

- New SPG
 - Water scenarios reconsidered
 - Exposure estimations updated
 - Detailed guidance for Tier 2 options
 - Hazard characterization reconsidered
 - Extrapolation beyond tested range offered
 - Extrapolation between species updated
 - 'accumulative toxicity' (TRT) reconsidered
 - RA method reconsidered
 - Clear workflow for sublethal effects
 - Strategy for higher tier tests
 - Approach for statistics reconsidered
- Starting points are the existing studies
 - Elaborated workflow with different steps and options

- New SPG
- Water scenarios reconsidered
- Exposure estimations updated
- Detailed guidance for Tier 2 options
- Hazard characterization reconsidered
- Extrapolation beyond tested range offered
- Extrapolation between species updated
- 'accumulative toxicity' (TRT) reconsidered
- RA method reconsidered
- Clear workflow for sublethal effects
- Strategy for higher tier tests
- Approach for statistics reconsidered

- Guidance/considerations for the methods (existing methods considered)
- Clear list of endpoints
 - linked to the SPG as far as it was defined

Main changes from 2013

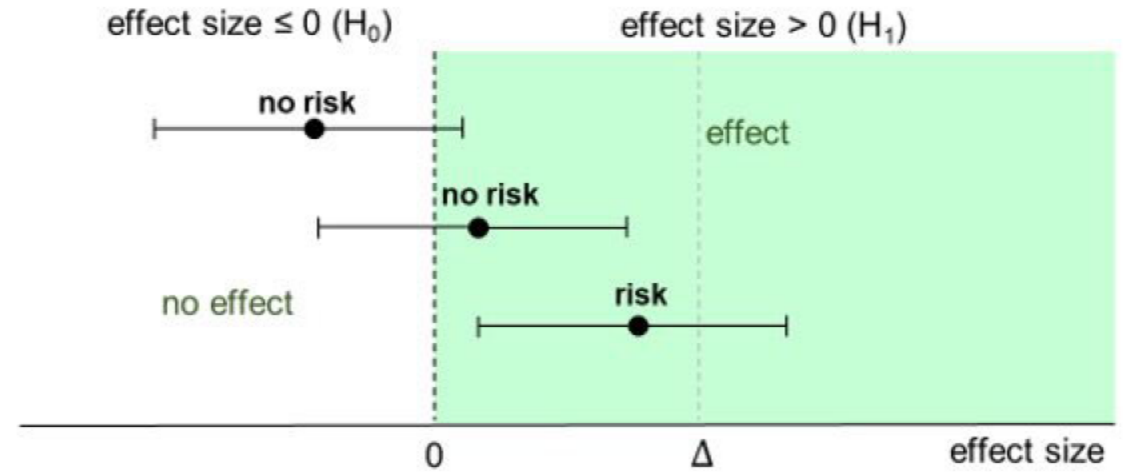
- New SPG
- Water scenarios reconsider
- Exposure estimations updated
- Detailed guidance for Tier 1
- Hazard characterization reconsidered
- Extrapolation beyond tested conditions
- Extrapolation between species
- 'accumulative toxicity' (TRT)
- RA method reconsidered
- Clear workflow for sublethal effects
- Strategy for higher tier tests
- Approach for statistics reconsidered

Difference test

$p > \alpha$: effect not proven

$p > \alpha$: effect not proven

$p < \alpha$: effect proven

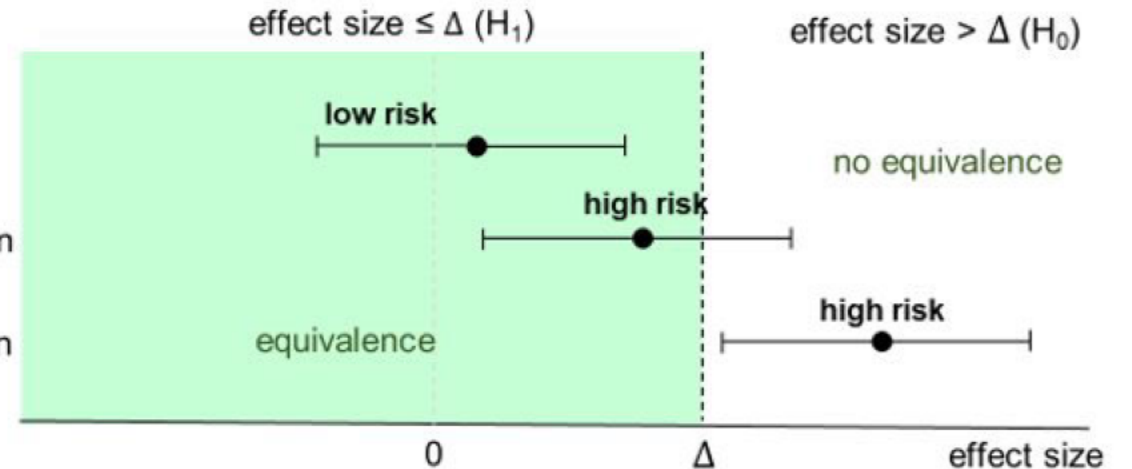


Equivalence test

$p < \alpha$: equivalence proven

$p > \alpha$: equivalence not proven

$p > \alpha$: equivalence not proven



- Digest the comments from the PC – **autumn 2022**
 - Organize/structure the comments
 - Answer to the comments
 - Identify issues to be reflected/subject of change
- Review the draft – **winter-spring 2023**
 - WG discussions
 - Corrections/re-drafting
- Finalize drafting – **spring 2023 (?)**
- Issue and inform RMs – **before summer 2023 (?)**





Subscribe to

efsa.europa.eu/en/news/newsletters
efsa.europa.eu/en/rss



Receive job alerts

careers.efsa.europa.eu – job alerts



Follow us on Twitter

[@efsa_eu](https://twitter.com/efsa_eu)
[@plants_efsa](https://twitter.com/plants_efsa)
[@methods_efsa](https://twitter.com/methods_efsa)
[@animals_efsa](https://twitter.com/animals_efsa)



Follow us Linked in

[Linkedin.com/company/efsa](https://www.linkedin.com/company/efsa)



Contact us

efsa.europa.eu/en/contact/askefsa