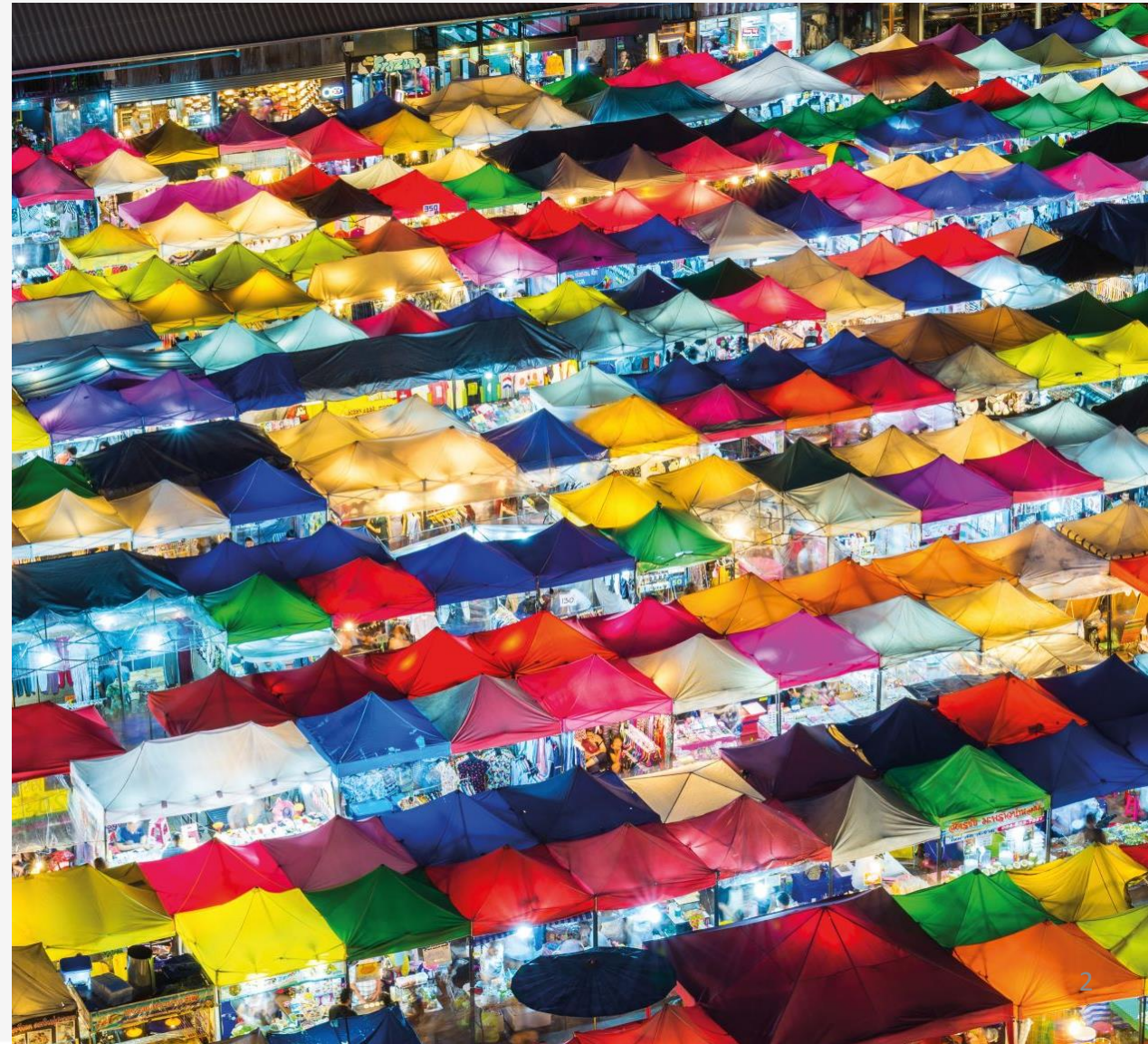




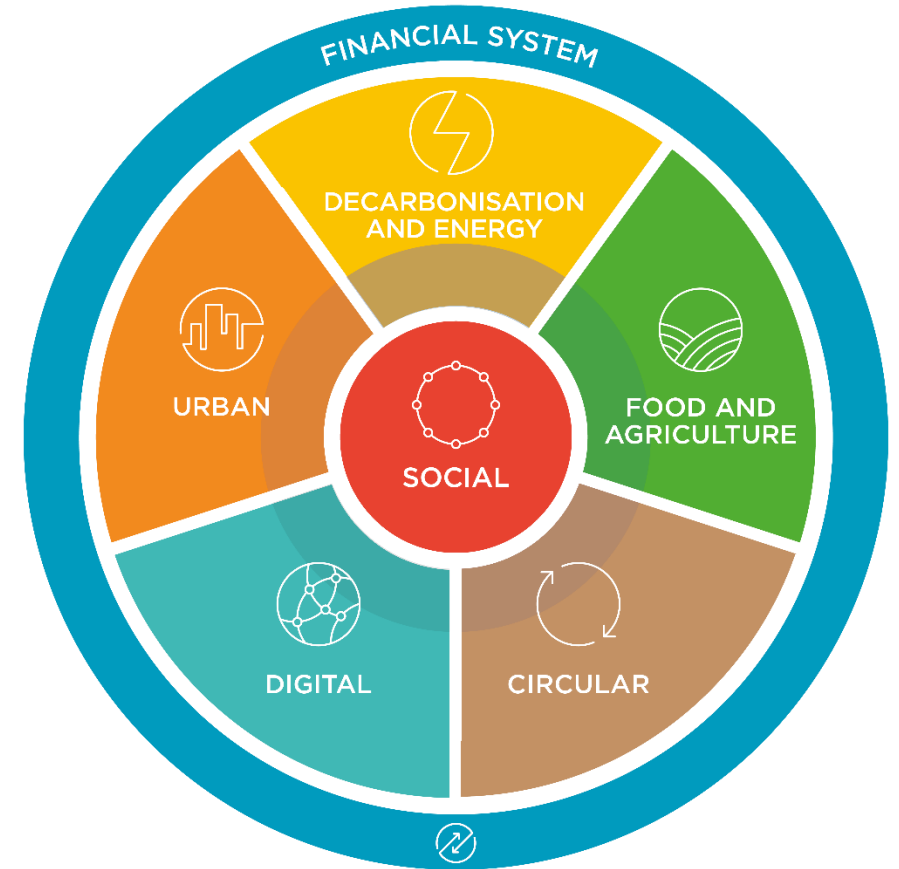
WBA's Food & Agriculture Benchmark

Benchmarking for a better world

- Businesses are key to achieve the UN Sustainable Development Goals (SDGs)
- WBA's benchmarks:
 - measure and compare company performance on the SDGs
 - are free and publicly available
 - used by companies, investors, governments, civil society and individuals
- Recognise leadership and create accountability



Seven System Transformations



Empowering stakeholders

Companies



Investors



200+ Alliance
Civil society



Governments



Individuals



200+ Alliance



Stakeholder Engagement and Consultation



- WBA Company Roundtables
- WBA Farmers Coalition
- WBA Investor Coalition
- WBA Expert Review Committee

- High-level policy forums and events
- Multi-stakeholder dialogue
- Data-driven policy interventions
- Partnerships at local and multilateral levels



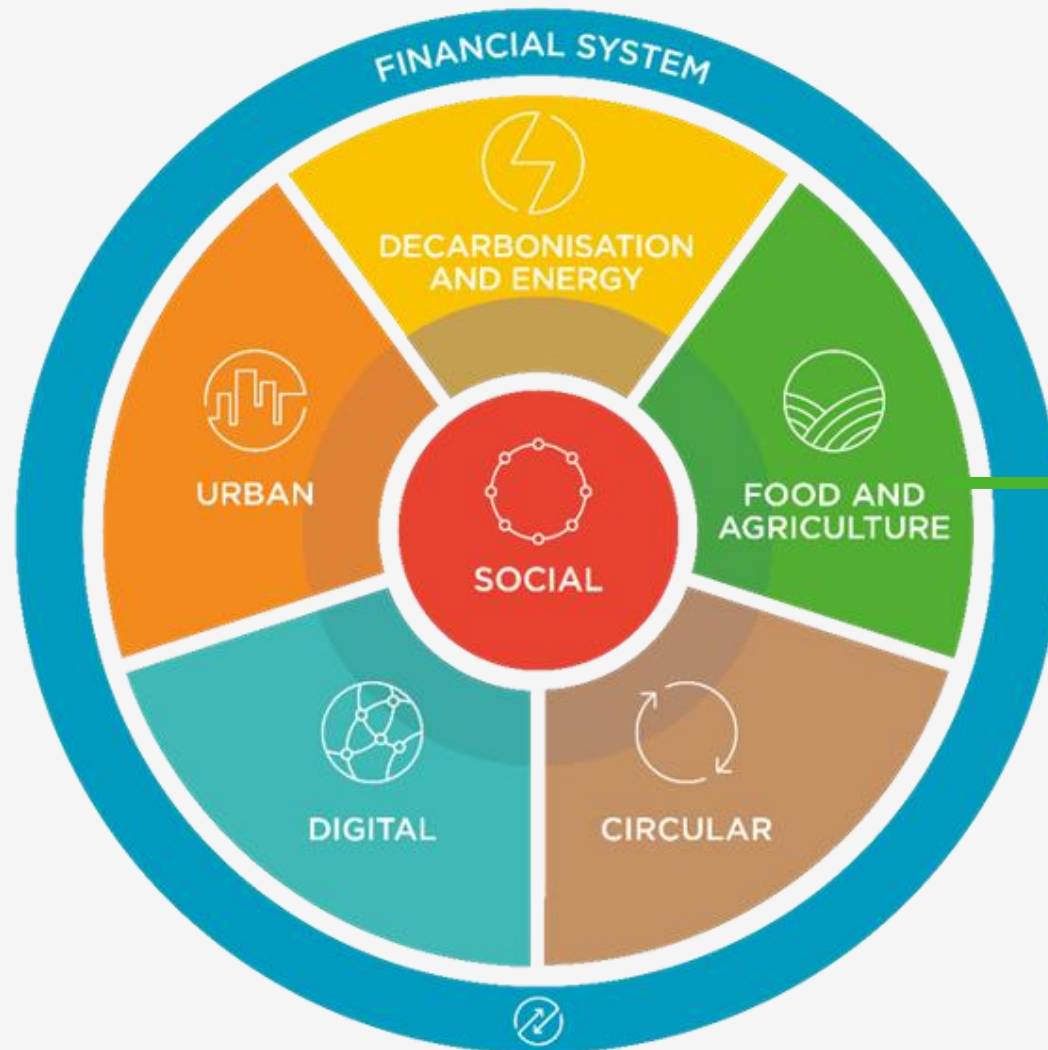


Food & Agriculture Benchmark

- Food Systems Transformation
- From Farm to Fork

- Focus on Environment, Nutrition and Social Inclusion
- Company's own operations and value chain partners

Food Systems Transformation



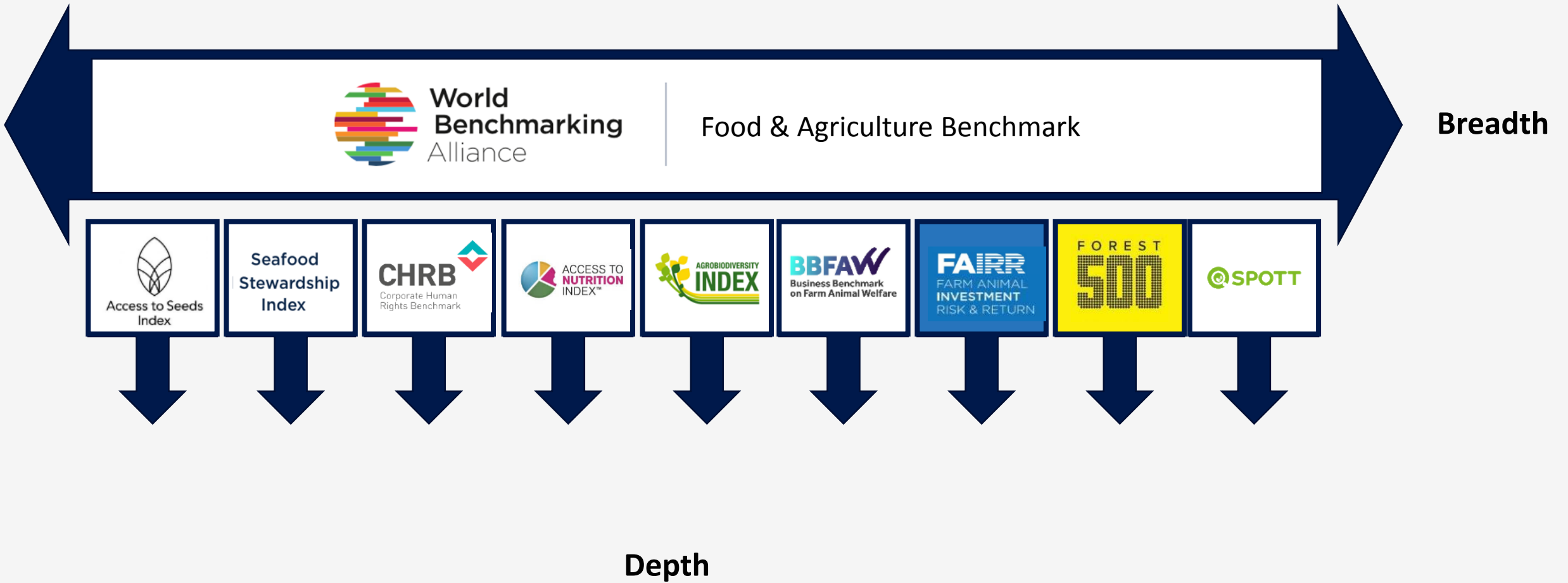
- **Food & Agriculture Benchmark**
- **Spotlight:** Access to Seeds Index
- **Spotlight:** Seafood Stewardship Index

Food & Agriculture Benchmark

350 keystone companies

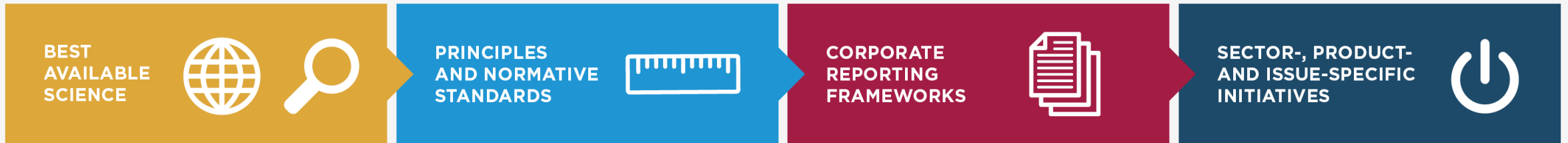


Industry Benchmarks & Indices



Developing methodologies

SUSTAINABLE DEVELOPMENT GOALS



Benchmark methodology

Core social indicators

- D1 Commitment to respect human rights
- D2 Commitment to respect the human rights of workers
- D3 Identifying human rights risks and impacts
- D4 Assessing human rights risks and impacts
- D5 Integrating and acting on human rights risks and impacts
- D6 Engagement with affected and potentially affected stakeholders
- D7 Grievance mechanisms for workers
- D8 Grievance mechanisms for external individuals and communities
- D9 Health and safety fundamentals
- D10 Living wage fundamentals
- D11 Working hours fundamentals
- D12 Collective bargaining fundamentals
- D13 Workforce diversity disclosure fundamentals
- D14 Gender equality and women's empowerment fundamentals
- D15 Personal data protection fundamentals
- D16 Responsible tax fundamentals
- D17 Anti-bribery and anti-corruption fundamentals
- D18 Responsible lobbying and political engagement fundamentals

Transformation-specific social inclusion indicators

- D19 Child labour
- D20 Forced labour
- D21 Living wage
- D22 Healthy and safety of vulnerable groups
- D23 Farmer and fisher productivity and resilience
- D24 Land rights

Governance and strategy indicators

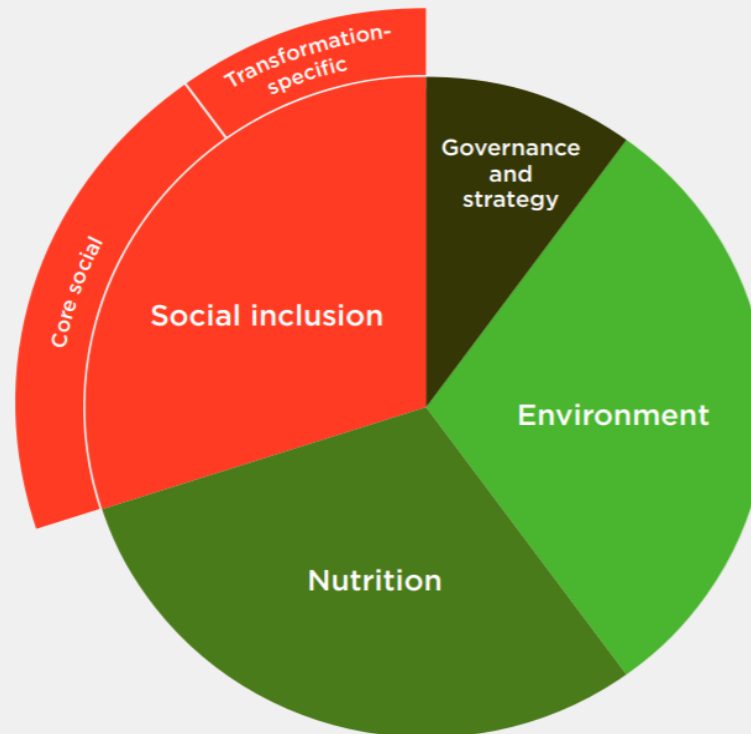
- A1 Sustainable development strategy
- A2 Governance and accountability for sustainable development
- A3 Stakeholder engagement

Environment indicators

- B1 Scope 1 to 2 greenhouse gas emissions
- B2 Scope 3 greenhouse gas emissions
- B3 Protection of terrestrial natural ecosystems
- B4 Sustainable fishing and aquaculture
- B5 Protein diversification
- B6 Soil health and agrobiodiversity
- B7 Fertiliser and pesticide use
- B8 Water use
- B9 Food loss and waste
- B10 Plastic use and packaging waste
- B11 Animal welfare
- B12 Antibiotic use and growth promoting substances

Nutrition indicators

- C1 Availability of healthy foods
- C2 Accessibility and affordability of healthy foods
- C3 Clear and transparent labelling
- C4 Responsible marketing
- C5 Workforce nutrition
- C6 Food safety



Alignment and multi-stakeholder approach

Measurement area	Key sources and stakeholders
Governance and strategy	Global Reporting Initiative (GRI) - Sustainability Accounting Standards Board (SASB) - SDG Impact Standards: Enterprises (2020) - Sustainable Development Goals Disclosure (SDGD) Recommendations (2020) - World Economic Forum (WEF)
Environment	Accountability Framework initiative (AFi) - Agrobiodiversity Index - Aquatic Life Institute - B LAB UNGC - Business Benchmark on Farm Animal Welfare (BBFAW) - CDP Climate - CDP Forests - CDP Water - CFS RAI Principles - Champions 12.3 - Committee on World Food Security (CFS) - Compassion in World Farming (CIWF) - Consumer Goods Forum (CGF) - Ellen MacArthur Foundation (EMF) - FAIRR - Food and Agriculture Organization of the United Nations (FAO) - FLW Protocol - Food Foundation - Plating Up Progress - Forest 500 - GHG Protocol Agricultural Guidance (2014) - GLOBALG.A.P. - GRI - KnowTheChain - ProTerra Foundation - Roundtable on Sustainable Palm Oil (RSPO) - SASB - WBA's Seafood Stewardship Index (SSI) - Science Based Targets initiative (SBTi) - Science Based Targets Network - TiFN Food & Nutrition - Wageningen University & Research - Waste and Resources Action Programme (WRAP) - World Organization for Animal Health (OIE) - World Resources Institute (WRI) - World Wide Fund for Nature (WWF) - Zoological Society of London (ZSL) SPOTT
Nutrition	Access to Nutrition Initiative (ATNI) - B LAB UNGC - CFS RAI Principles - Consumer Goods Forum (CGF) - FAIRR - FAO - Forum for the Future - Global Alliance for Improved Nutrition (GAIN) - Global Food Safety Initiative (GFSI) - GRI - Micronutrient Forum - Food Foundation - Plating Up Progress - SASB, SUN Business Network - United Nations Children's Fund (UNICEF) - World Business Council for Sustainable Development (WBCSD) - Workforce Nutrition Alliance
Social inclusion	WBA's Access to Seeds Index (ATSI) - AFi - CFS RAI Principles - CFS Voluntary Guidelines on the Responsible Governance of Tenure of Land - Fisheries and Forests in the Context of National Food Security (VGGT) - WBA's Corporate Human Rights Benchmark (CHRB) - Ethical Trade Initiative (ETI) - FAIRR - FAO - Forest Stewardship Council (FSC) - Forest 500 - Future-Fit Foundation - GRI - IDH - the sustainable trade initiative - International Labour Organization (ILO) - Interlaken Group and Resources Initiative - KnowTheChain - OECD-FAO - Oxfam - Roundtable on Sustainable Biomaterials (RSB) - RSPO - Save the Children - SASB - WBA's social transformation - SSI - UNGP - UN Guiding Principles - WBCSD - World Bank - ZSL SPOTT

Presentation of results

Company scorecards

Key findings at aggregated level



KEY FINDING

Most companies are serious about sustainability.

28 of the companies we measured made reference to their responsibilities towards sustainability. 15 have published forward-looking corporate sustainability strategies.

[Read more](#) →

KEY FINDING

Companies are stepping up on human rights commitments.

22 of the 30 companies we measured have human rights commitments in place. However, they have to turn their commitments into procedures. For example, only 20% could demonstrate that they have a remediation mechanism in place.

[Read more](#) →

Health & safety



Grievance mechanisms



Remediations



Mowi

Mowi, previously known as Marine Harvest, is the world's largest producer of farmed salmon both by volume and revenue. Headquartered in Norway, the company is active in 25 countries and employs over 14,000 people. Mowi is a vertically integrated company, owning its supply chain from broodstock and genetic selection to processing and sales. Mowi predominantly focuses on salmon farming, though some of its subsidiaries process and sell a variety of wild-caught seafood products.

Summary

Mowi ranks 2nd in the benchmark and demonstrates a strong performance in several measurement areas. It has proven

RANKING POSITION

#2 /30

TOTAL SCORE

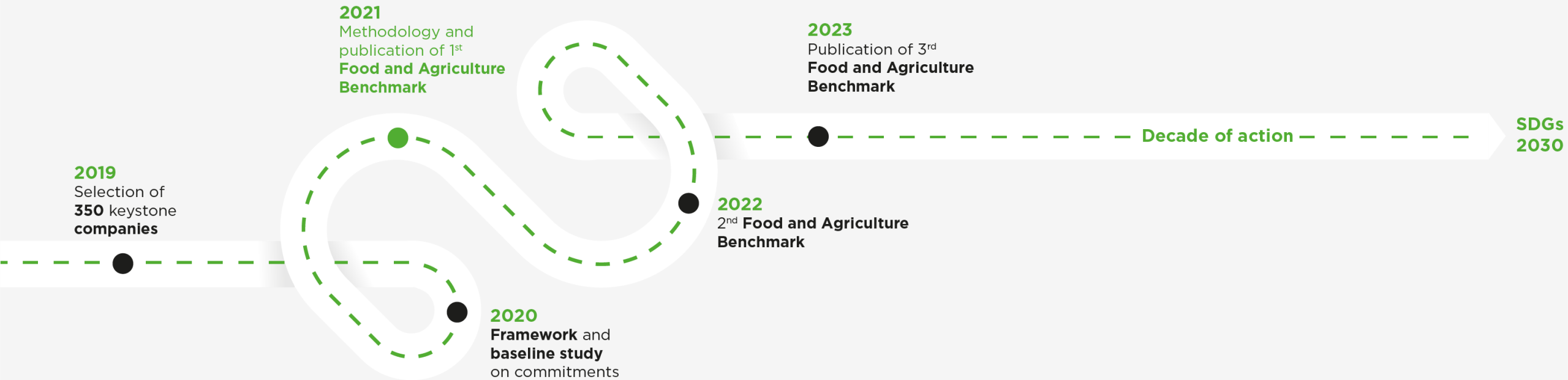
2.42 /5

Rankings

30 companies

1	Thai Union Group	2.70 / 5
2	Mowi	2.42 / 5
3	Charoen Pokphand Foods	2.32 / 5
4	BioMar Group	2.22 / 5
5	Nueva Pescanova	2.04 / 5
6	Carill Aqua Nutrition	1.87 / 5

Accountability mechanism



Questions?

- We strongly encourage constructive and meaningful feedback along the benchmark process.
- Don't hesitate to reach out to:

Sanne
(s.helderman@worldbenchmarkingalliance.org)

