



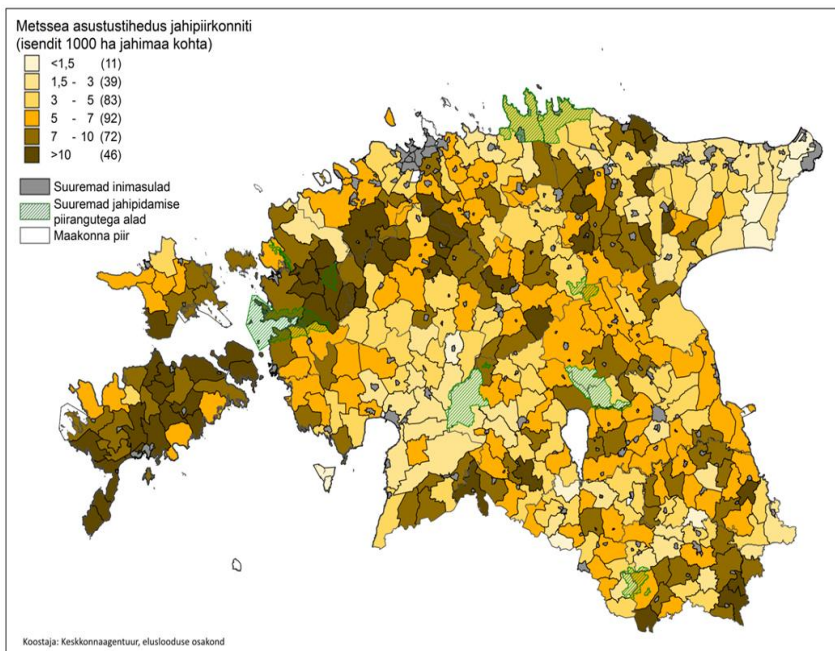
ASF situation in Estonia



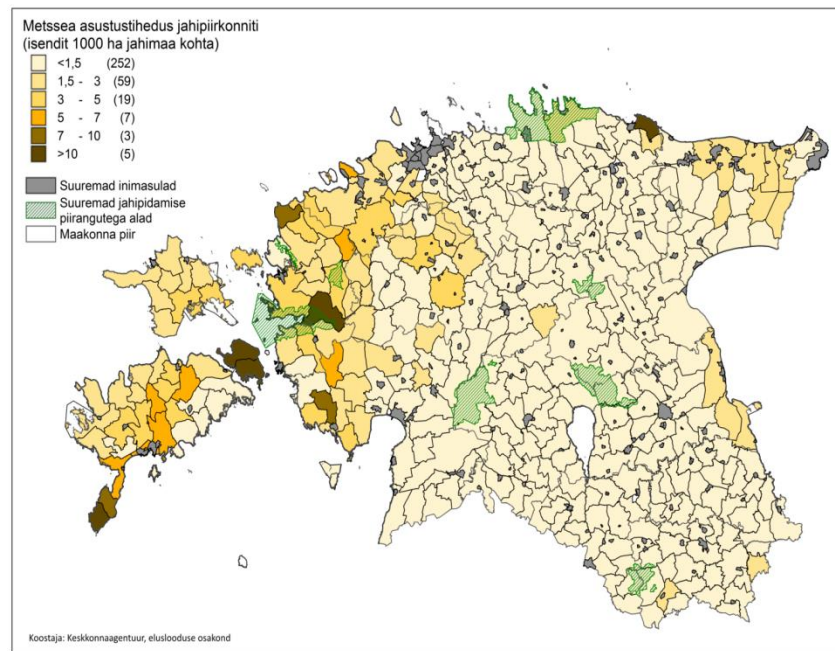
15.01.2018

Wild boar population density per 1000 ha hunting ground

2014

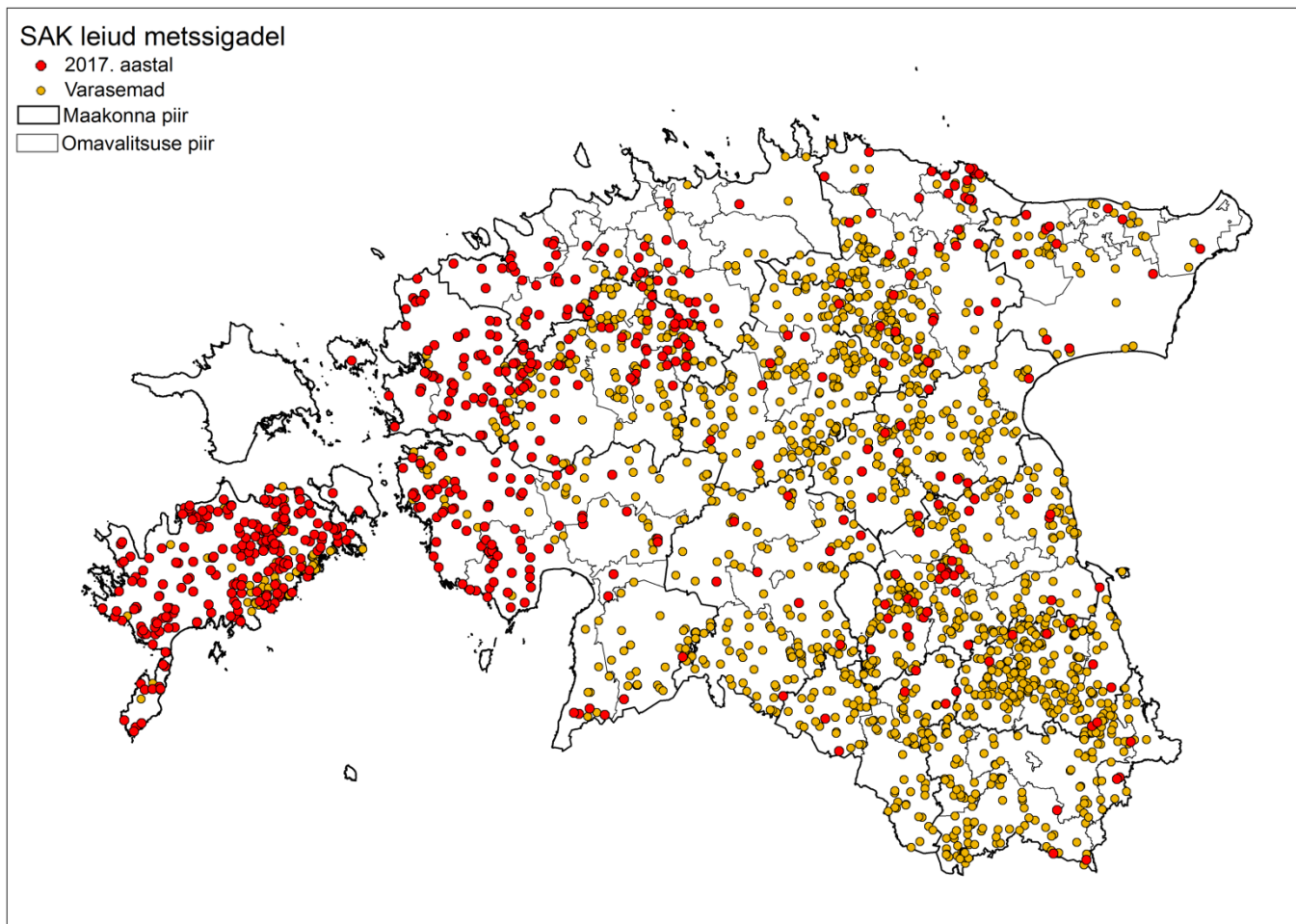


2017





ASF positive wild boar 2014-2017





Surveillance results in wild boars

- Laboratory testing 2014-2017

	2014		2015		2016		2017 (as of 31.12.2017)	
	No of animals tested	No ASF positive/prevalence	No of animals tested	No ASF positive/Prevalence	No of animals tested	No ASF positive/Prevalence	No of animals tested	No ASF positive/Prevalence
Hunted wild boars	879	9 (1%)	8617	680 (8%)	14976	749 (5%)	9161	565 (6,2%)
Found dead wild boars	175	64 (37%)	928	408 (44%)	987	818 (83%)	372	299 (80,4%)
Culled/car accident	2	0	17	7 (41%)	15	5 (33)	41	3 (7,3%)
Total	1056	73 (7%)	9562	1095 (11,5%)	15978	1572 (10%)	9574	867 (9,1%)



Wild boar hunting in hunting season 2017-2018 as of 31.12.2017

County	Hunting bag	Hunted	From which					Achievement %	Hunting structure %		
			Boar	Sow	Young boar	Young sow	Piglets		Boars + young boars from adults	Sows + young sows from adults	Piglets from adults
Harjumaa	621	398	80	45	96	82	95	64	58	42	24
Hiiumaa	1300	1079	208	138	141	189	403	83	52	48	37
Ida-Virumaa	301	63	13	7	13	15	15	21	54	46	24
Jõgevamaa	91	18	7	0	6	5	0	20	72	28	0
Järvamaa	70	65	18	7	11	12	17	93	60	40	26
Läänemaa	1300	868	174	178	186	194	136	67	49	51	16
Lääne-Virumaa	220	44	17	3	7	11	6	20	63	37	14
Põlvamaa	82	43	6	4	2	4	27	52	50	50	63
Pärnumaa	630	251	87	41	52	44	27	40	62	38	11
Raplamaa	600	159	29	26	30	37	37	27	48	52	23
Saaremaa	1900	1586	287	226	400	341	332	83	55	45	21
Tartumaa	150	109	28	20	14	20	27	73	51	49	25
Valgamaa	81	79	24	14	5	14	22	98	51	49	28
Viljandimaa	110	57	9	7	11	7	23	52	59	41	40
Võrumaa	101	137	18	7	29	23	60	136	61	39	44
TOTAL	7557	4956	1005	723	1003	998	1227	66	54	46	25



ASF in domestic pigs

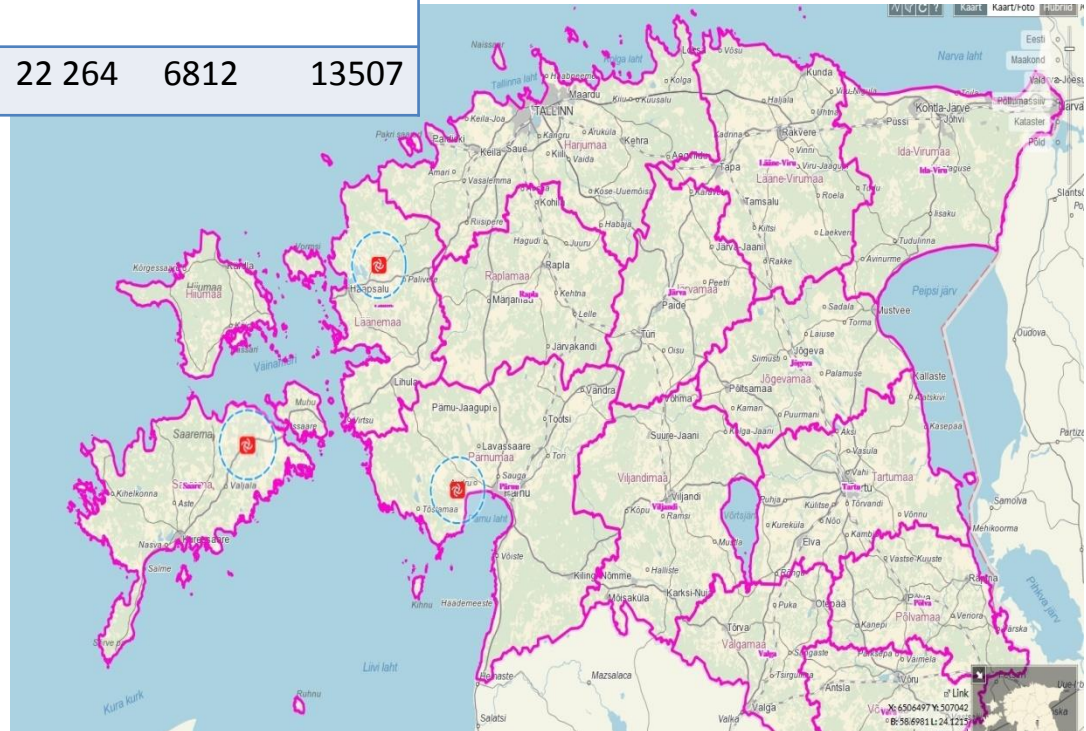
- Surveillance results in 2016 and 2017

	2016		2017 (as of 31.12.2017)	
	No of tested animals	No of ASF positive animals	No of tested animals	No of ASF positive herds
Domestic pig	8728	31	11128	3



ASF outbreaks 2017 (3)

	2014	2015	2016	2017
Number of farms	920	450	205	143
Number of outbreaks	0	18	6	3
1-15		6	4	0
100 - 500		5	0	0
1 100 - 6 500		7	2	3
Number of pigs in affected farms	0	22 264	6812	13507



Thank you for your attention!

www.vet.agri.ee

www.seakatk.ee