

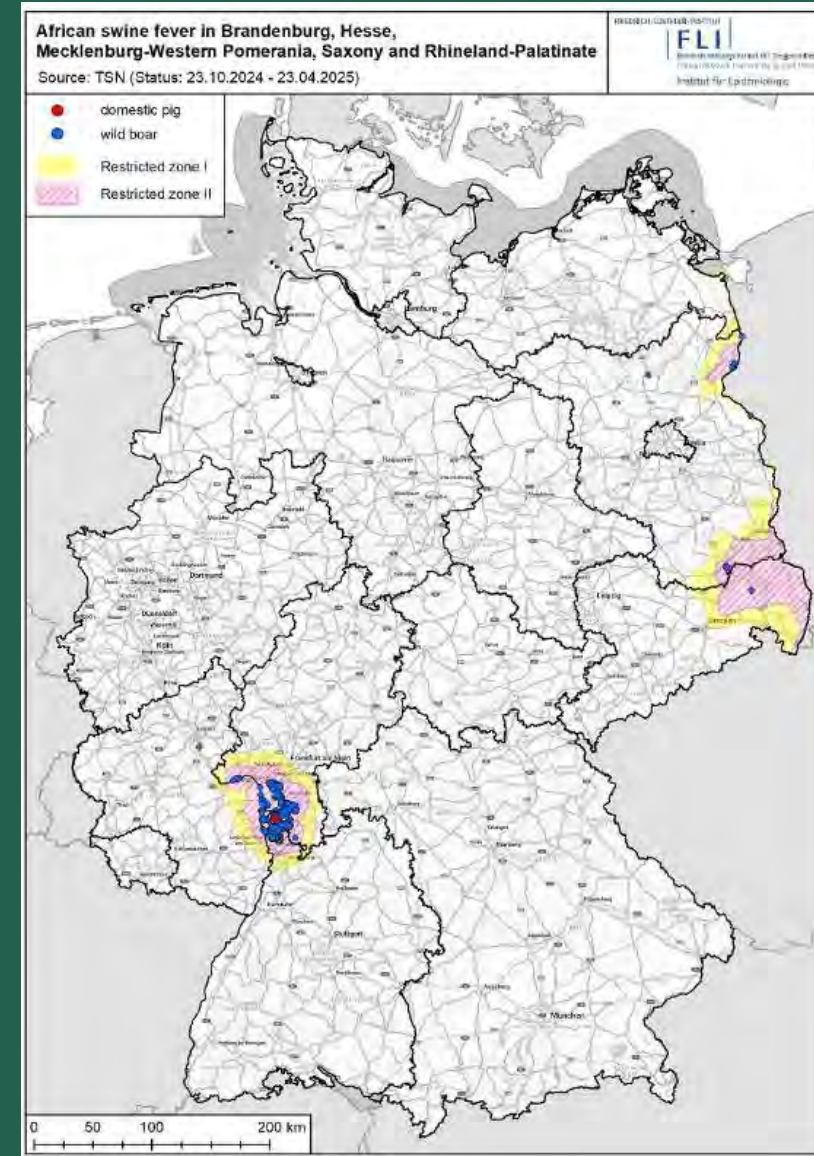


# African Swine Fever in DEU

SCoPAFF April 2025



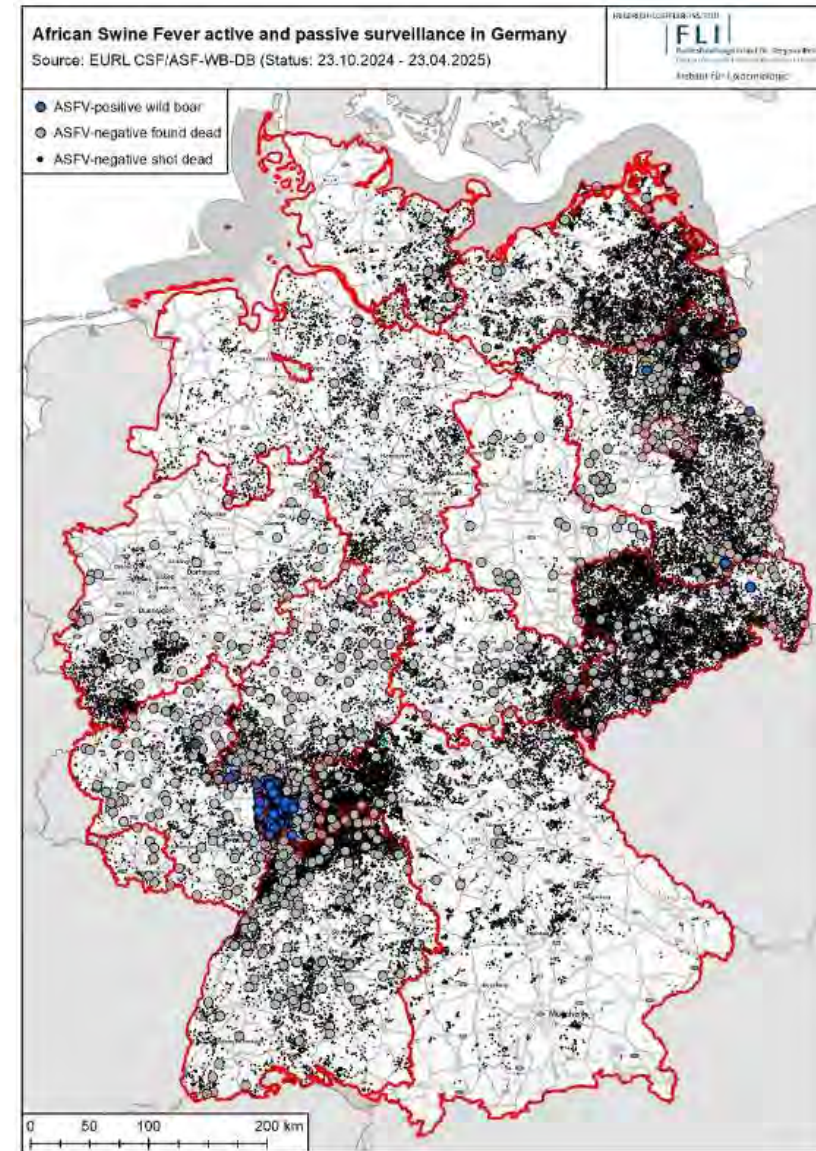
## ASF in DEU – overview –



# ASF in wild boar in DEU in 2025 –

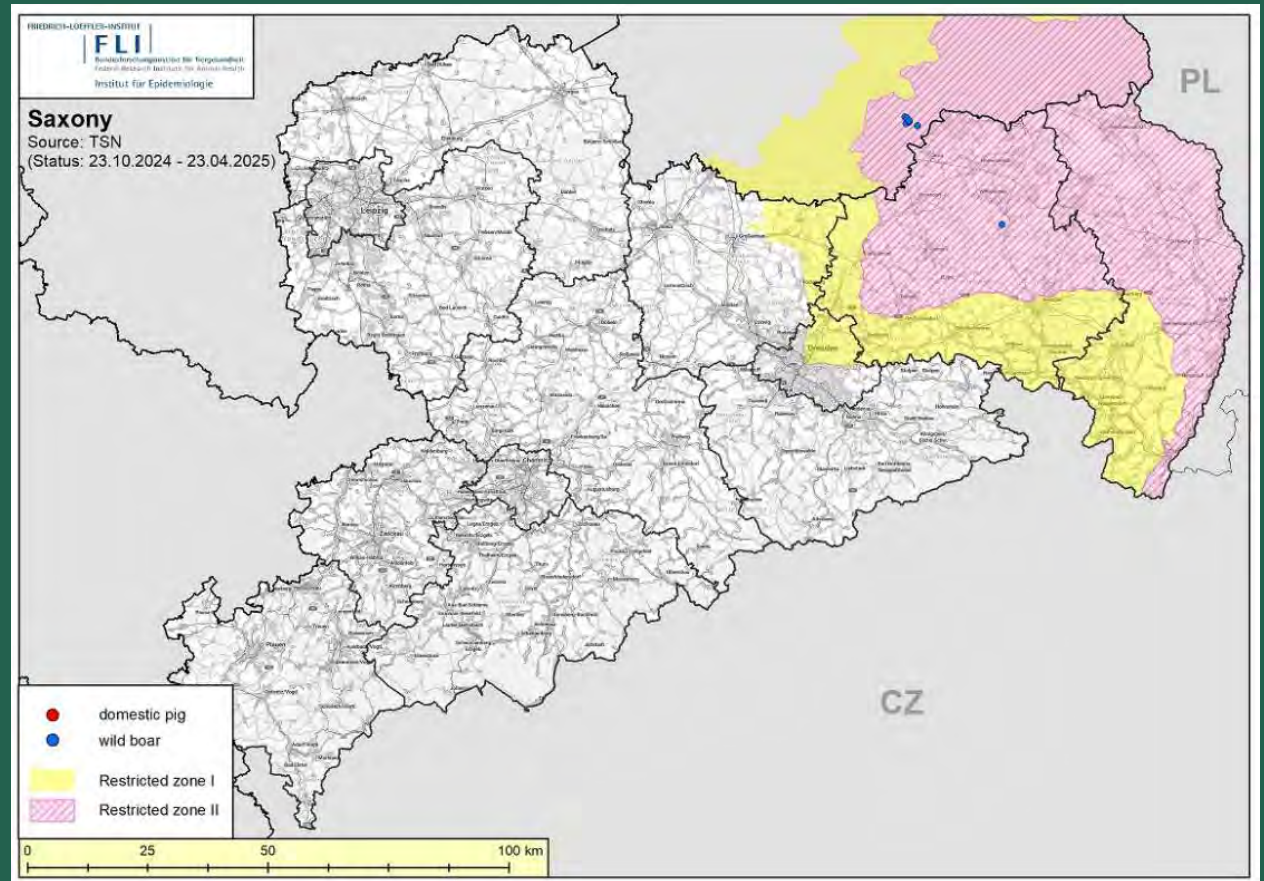
1052 cases on April 24<sup>th</sup>

ASF cases in wild boar DEU 2025  
1122 cases on 24.04.2025

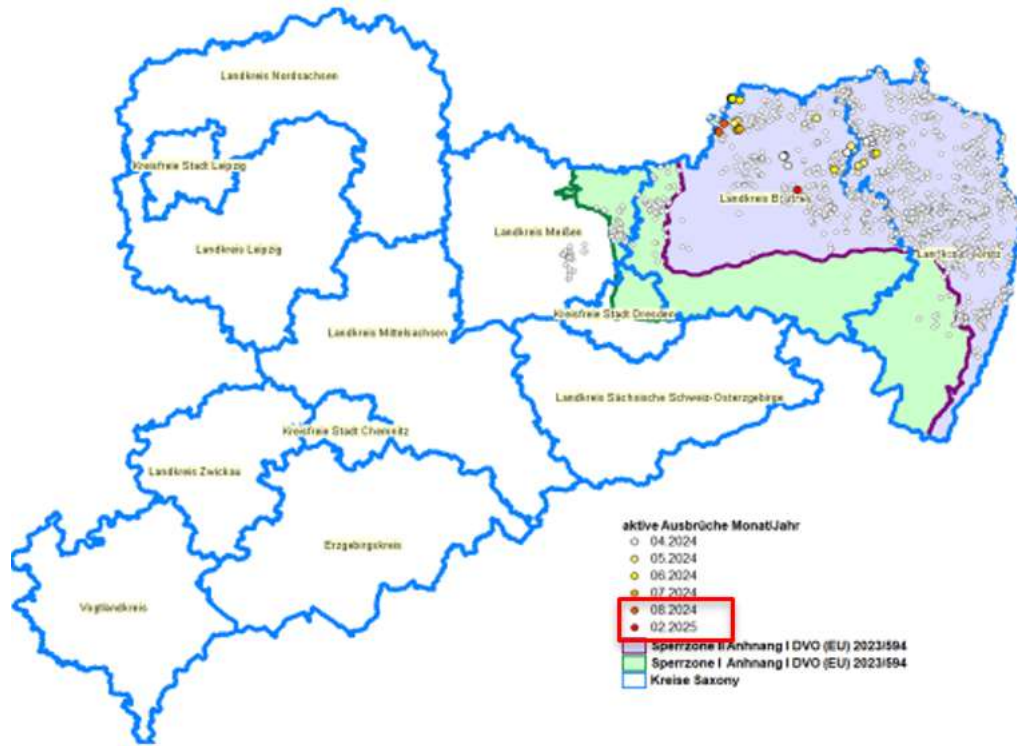




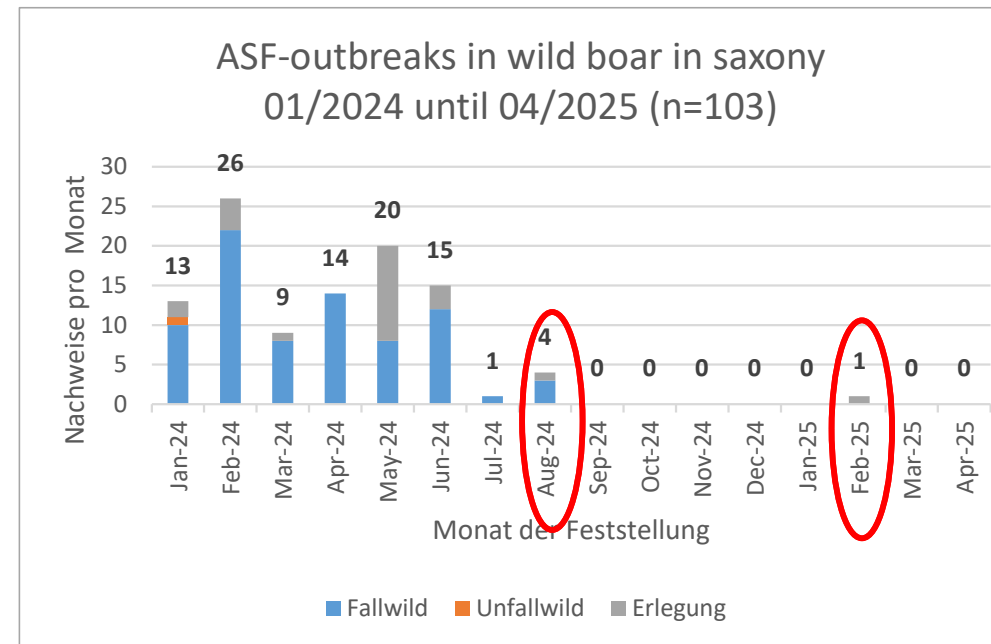
# ASF in Saxony (SN) amending RZ II and RZ I



# ASF in SN

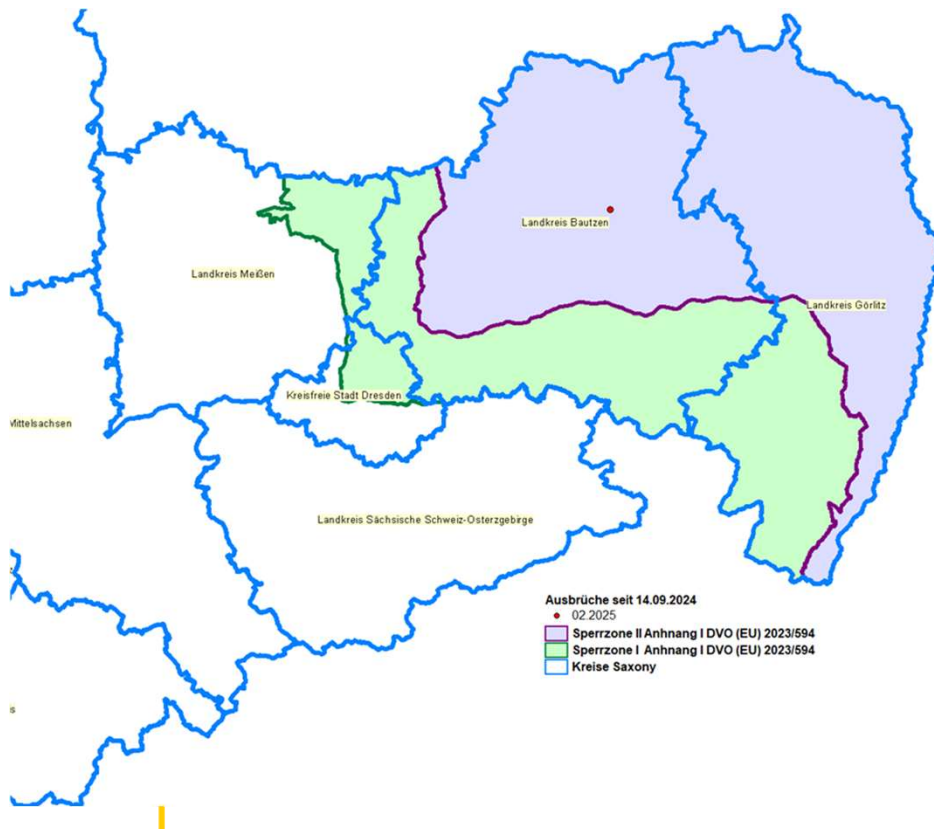


- last ASF cases in August 2024
- singular ASF case in hunted young wild boar on February 5<sup>th</sup> 2025



# ASF in SN

singular ASF case in hunted young wild boar on February 5<sup>th</sup> 2025







- Measures intensified:
  - ✓ Regular, active search for carcasses (dogs/drones)
  - ✓ Checks on establishments with porcine animals
  - ✓ Trapping
- no further cases in that area and hunted wild boars all negativ

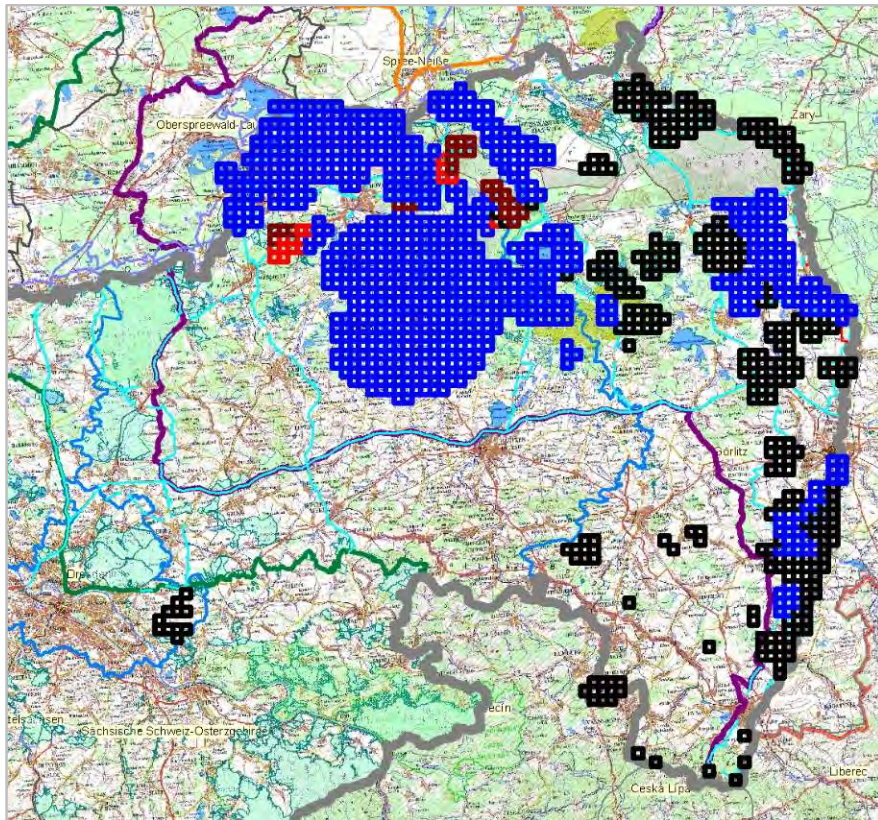


# ASF in SN –

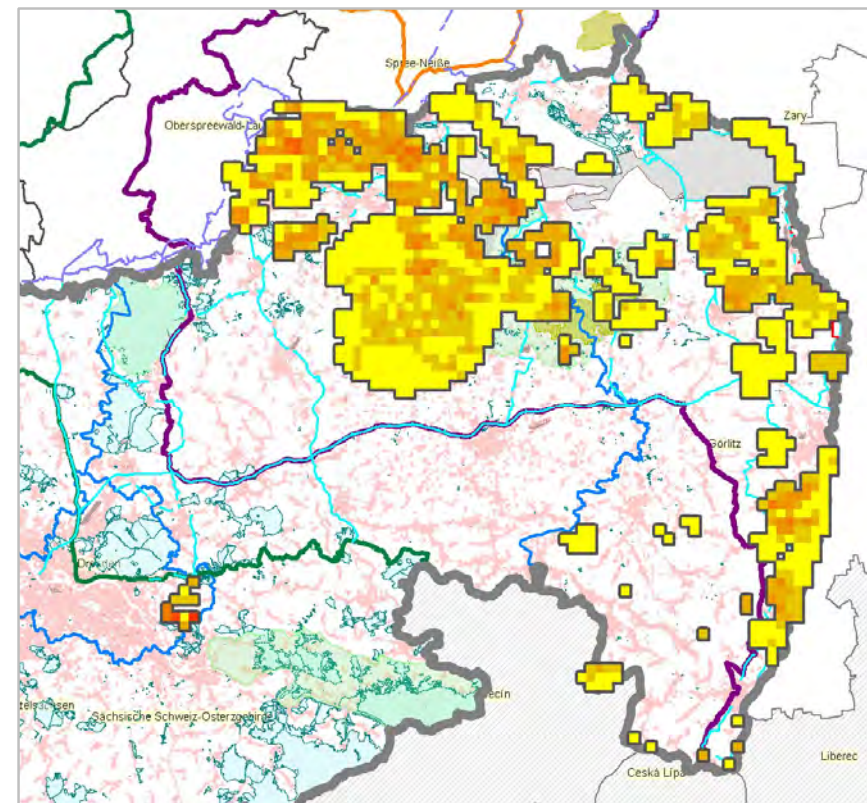
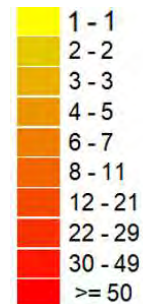
regular active search for carcasses

January 1th – April 17th, 2025

	Drohne	= Drone
	Hund	= Dog teams
	Hund und Drohne	= Dog teams and drone
	Mensch	= Human search

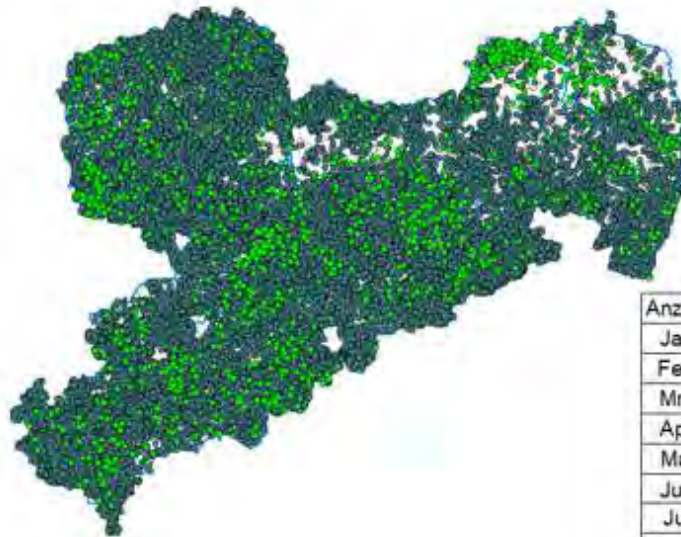


Search 2025 intensity

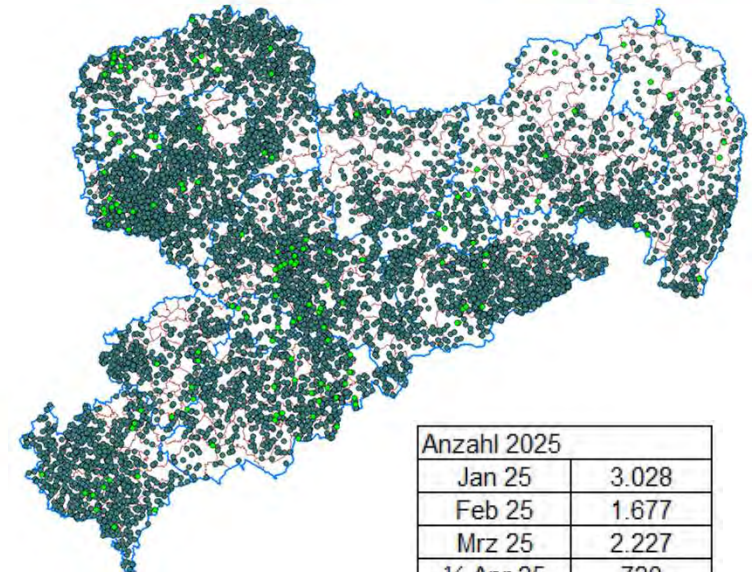




# ASF in SN - surveillance



Anzahl 2024	
Jan 24	2.961
Feb 24	1.980
Mrz 24	2.152
Apr 24	1.630
Mai 24	1.825
Jun 24	1.406
Jul 24	2.008
Aug 24	1.857
Sep 24	2.373
Okt 24	3.327
Nov 24	3.875
Dez 24	2.975
<b>Summe</b>	<b>28.369</b>



Anzahl 2025	
Jan 25	3.028
Feb 25	1.677
Mrz 25	2.227
½ Apr 25	720
<b>Summe</b>	<b>7.652</b>

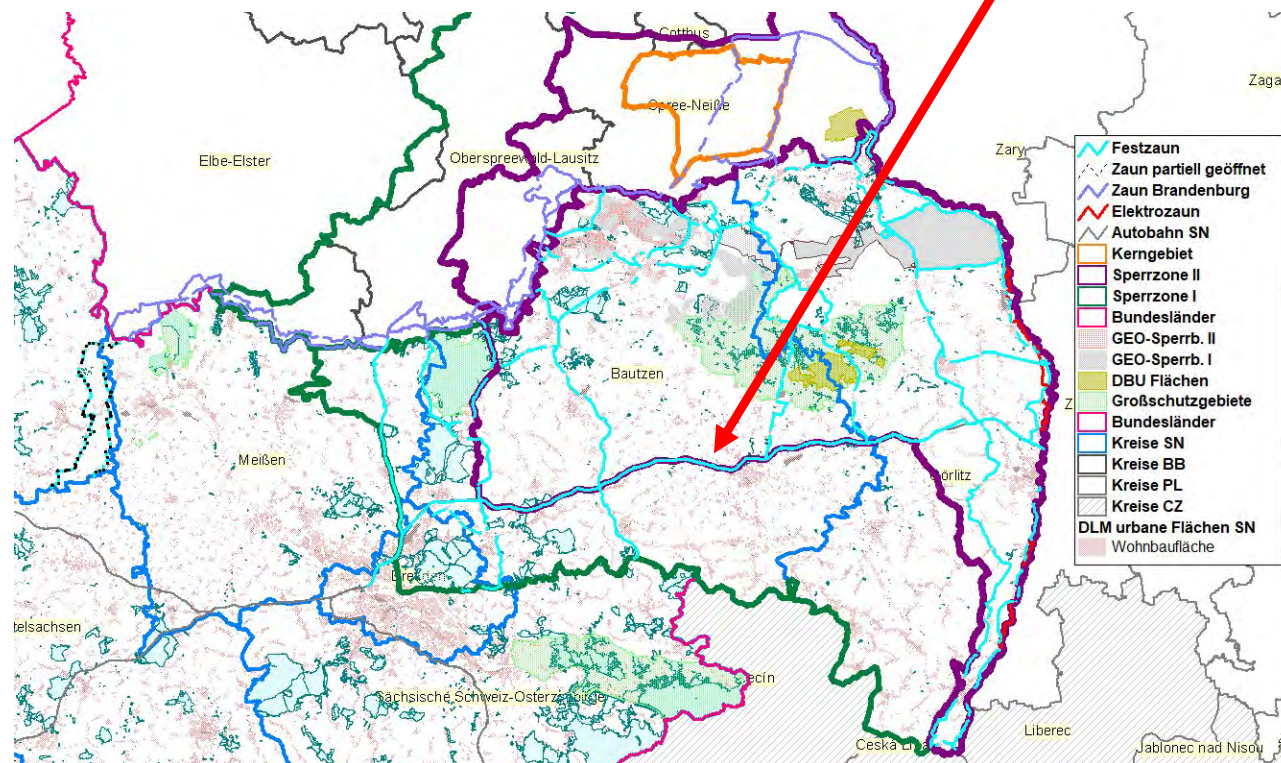
- Indicator animals
- hunted

all hunted and indicator animals are tested!

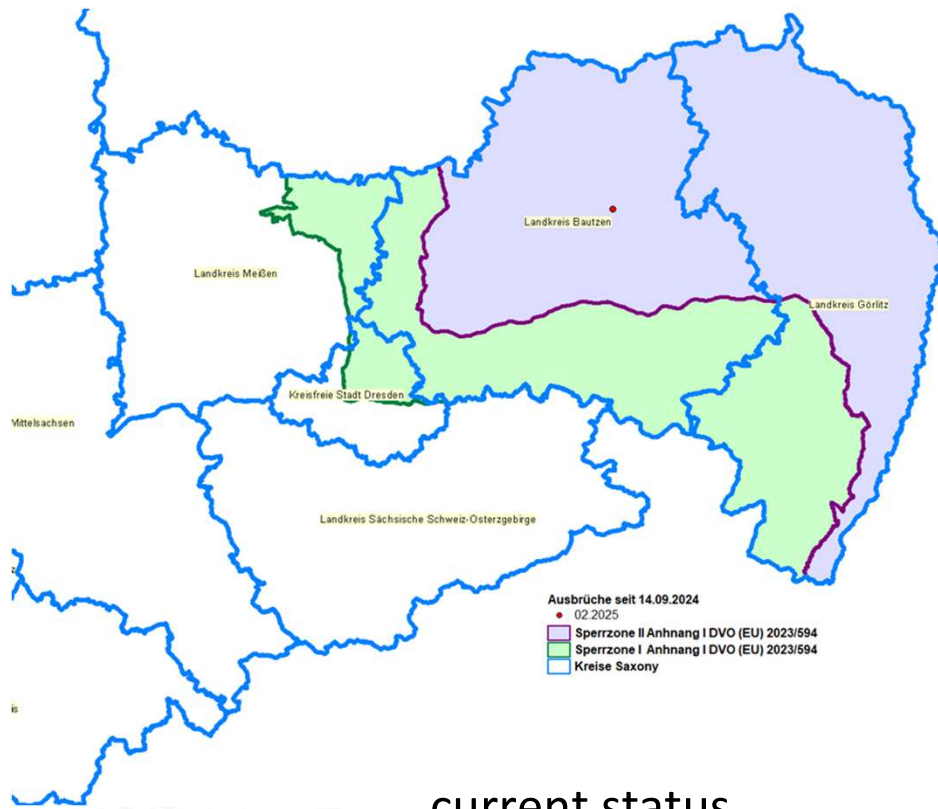


# ASF in SN - fences

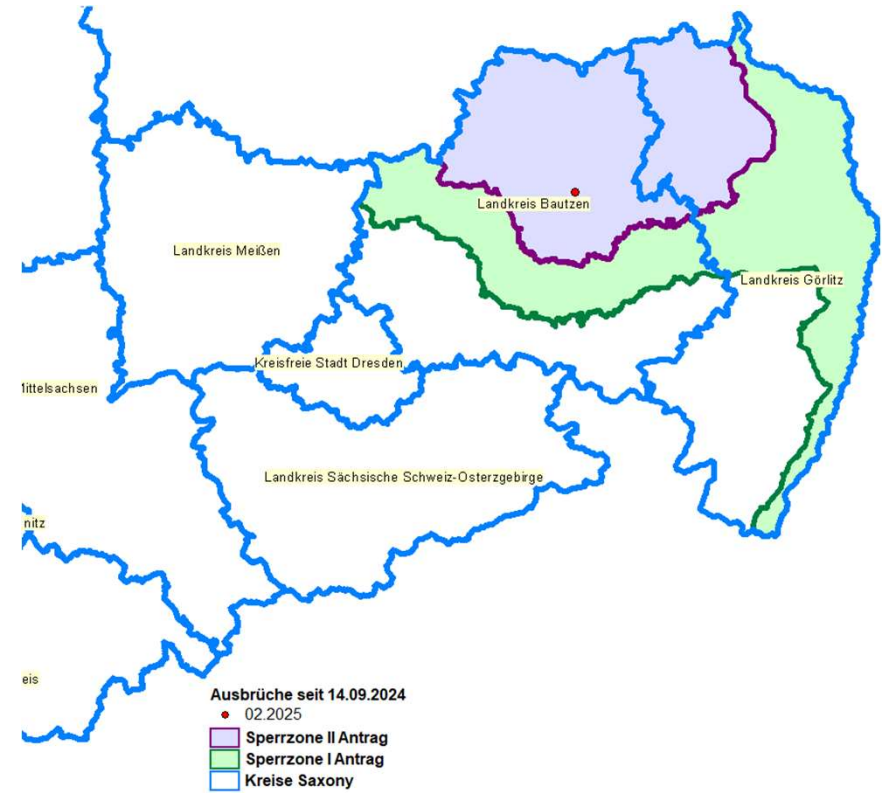
highway A4 both sides with fences  
limitation of SZ II in south



# ASF in SN - amending RZ II and RZ I

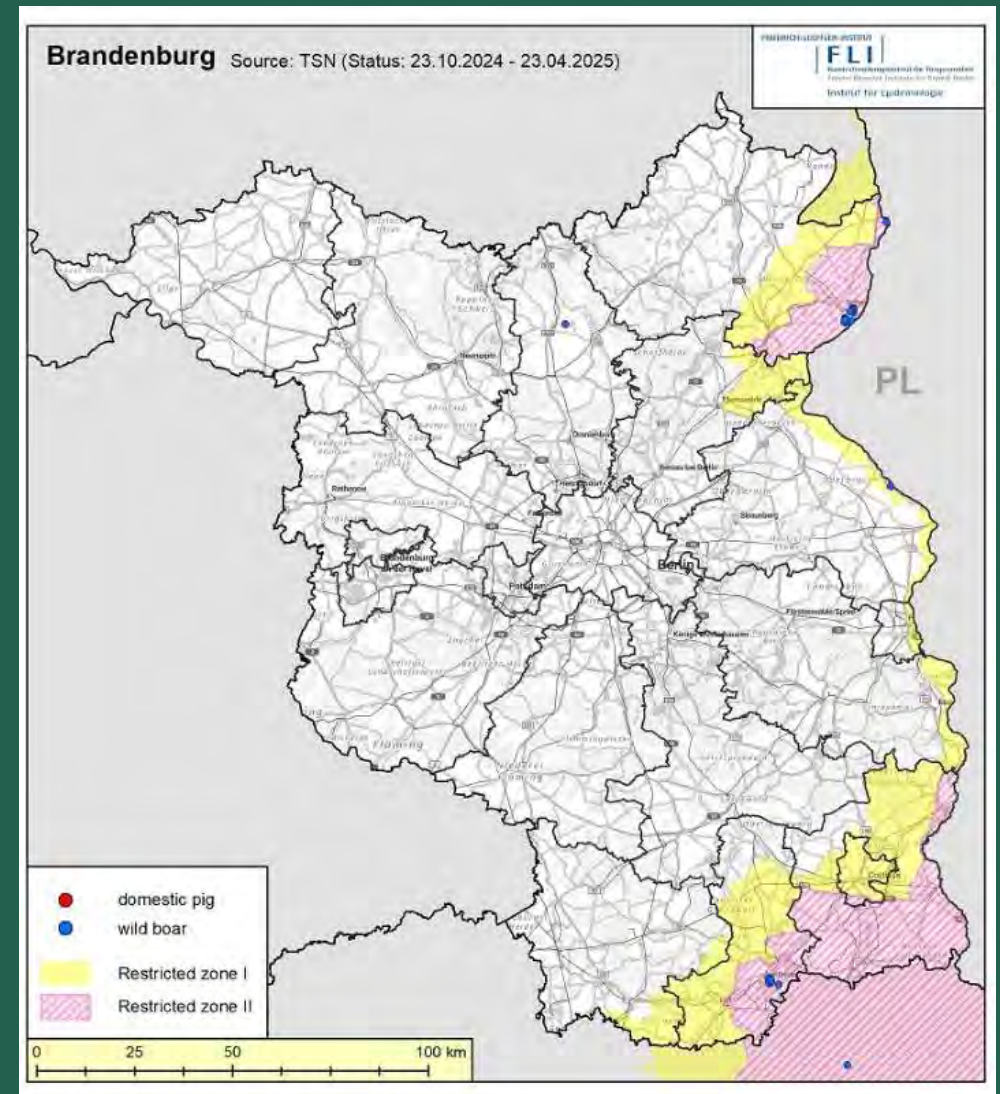


current status



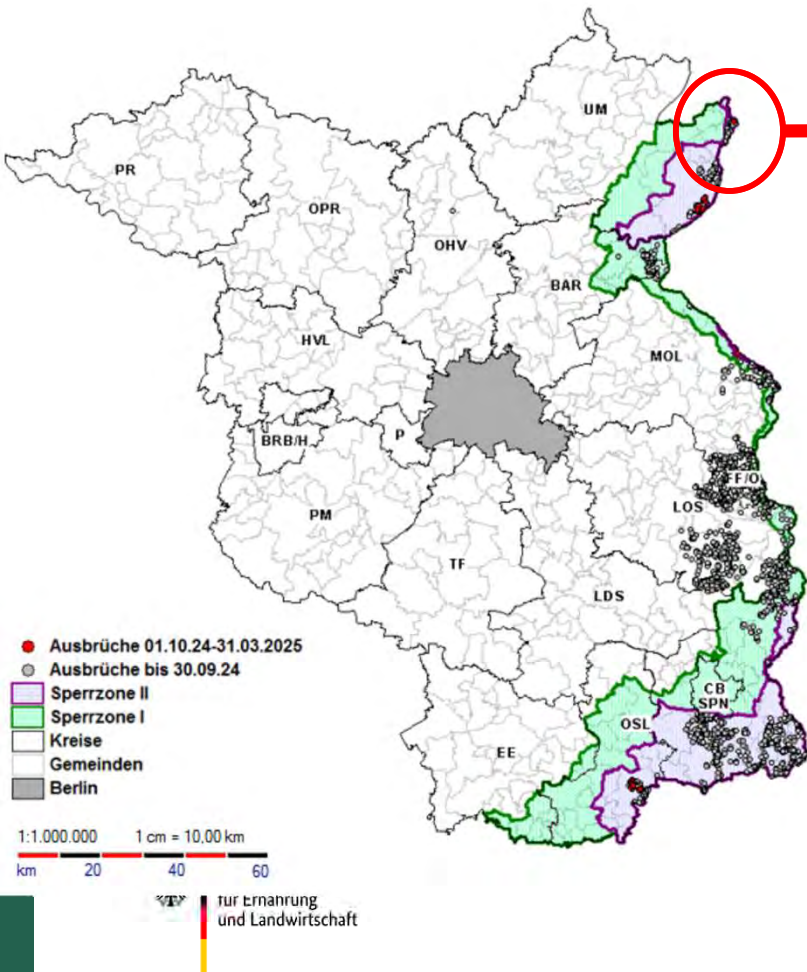
planned

# ASF in Brandenburg (BB)

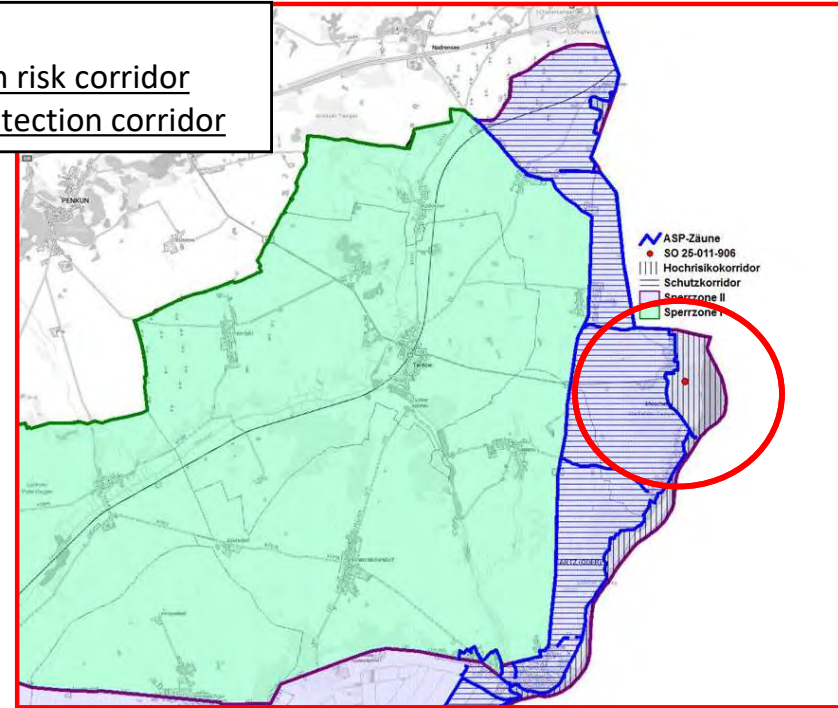




# ASF in BB



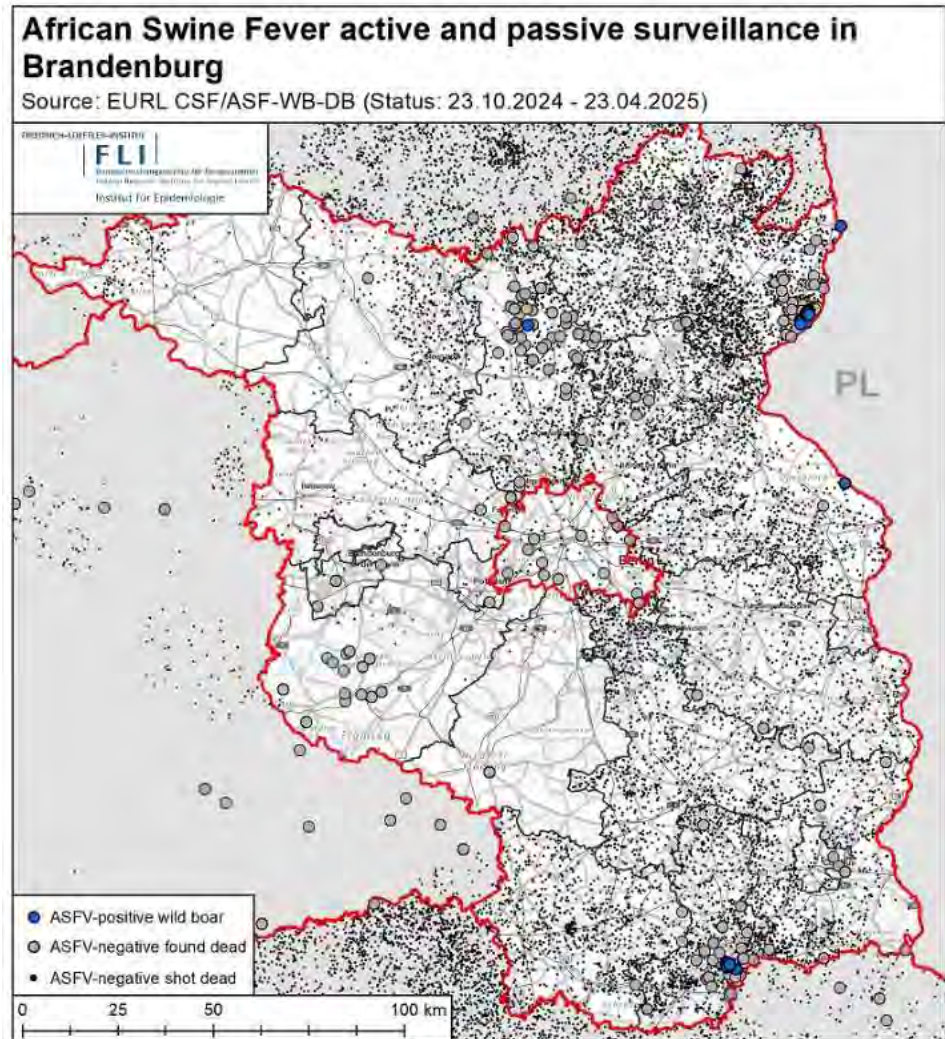
blue line = solid fence  
vertically hatched = high risk corridor  
cross hatched = ASF protection corridor



- ASF case in found dead young boar on **March 26<sup>th</sup> 2025** in high-risk corridor alongside the POL-DEU border
- searching going on → no further ASF-cases

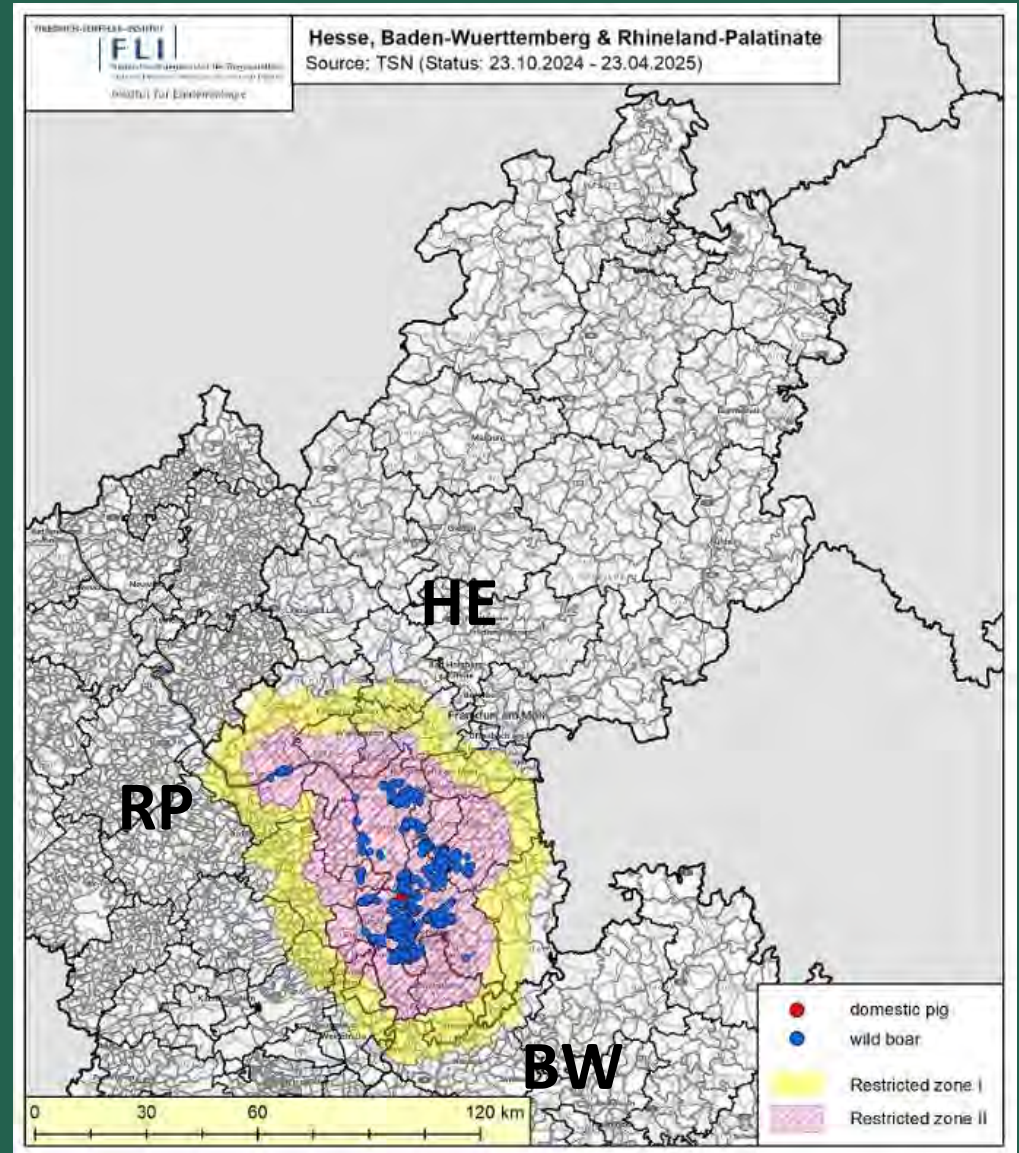
# ASF in BB – surveillance

## October 2024 – April 2025





# ASF in Hesse, Rhineland-Palatinate and Baden-Wuerttemberg





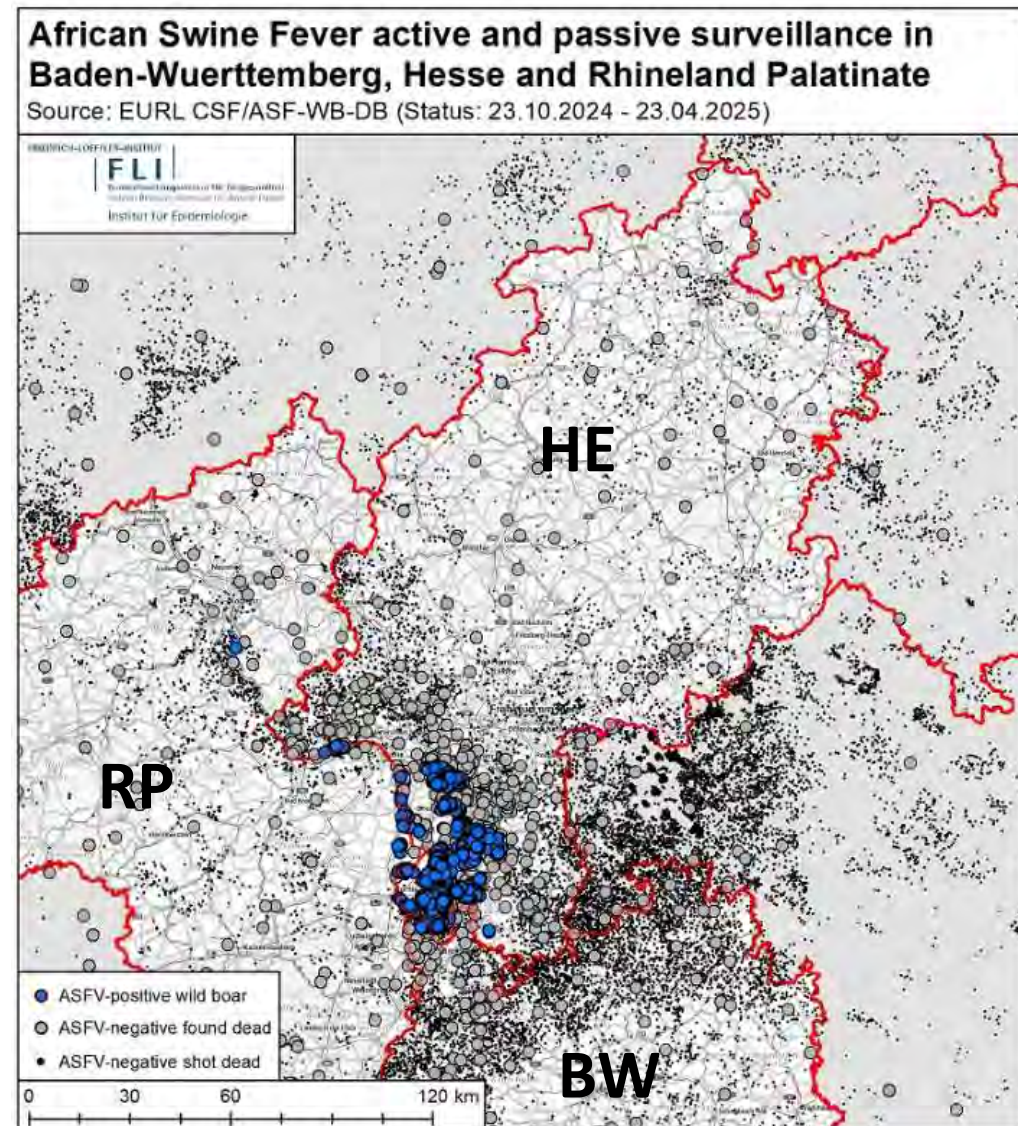
# ASF in HE + RP + BW – Surveillance

(as of April 23<sup>th</sup>, 2025) >280.000 km<sup>2</sup> searched

Southern part of HE – northern part of  
BW:

- ❖ High wild boar density
- ❖ Metropolitan area – heavily populated
- ❖ Open spaces in Rhine plain
- ❖ Eradication very challenging

red line = border of Bundesländer



# ASF in HE

case April 6<sup>th</sup>, 2025

young boar

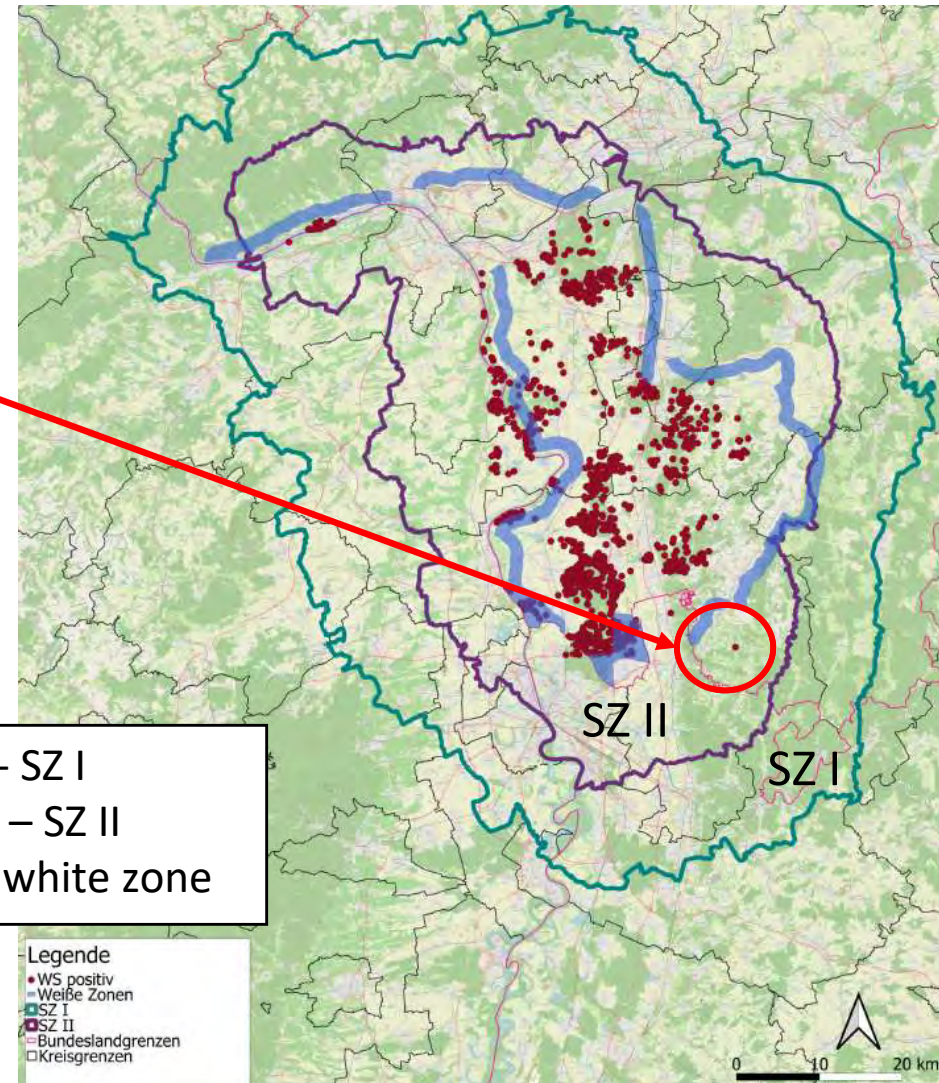
found dead

distance to next cases 10 km

intensive searches with drones  
+ dogs immediately conducted

in a radius of 5 km around the  
detection site no further ASF-  
positive wild boar findings, all  
tests negativ

green line - SZ I  
purple line – SZ II  
blue line – white zone





# ASF in HE

case April 6<sup>th</sup>, 2025

within SZ II

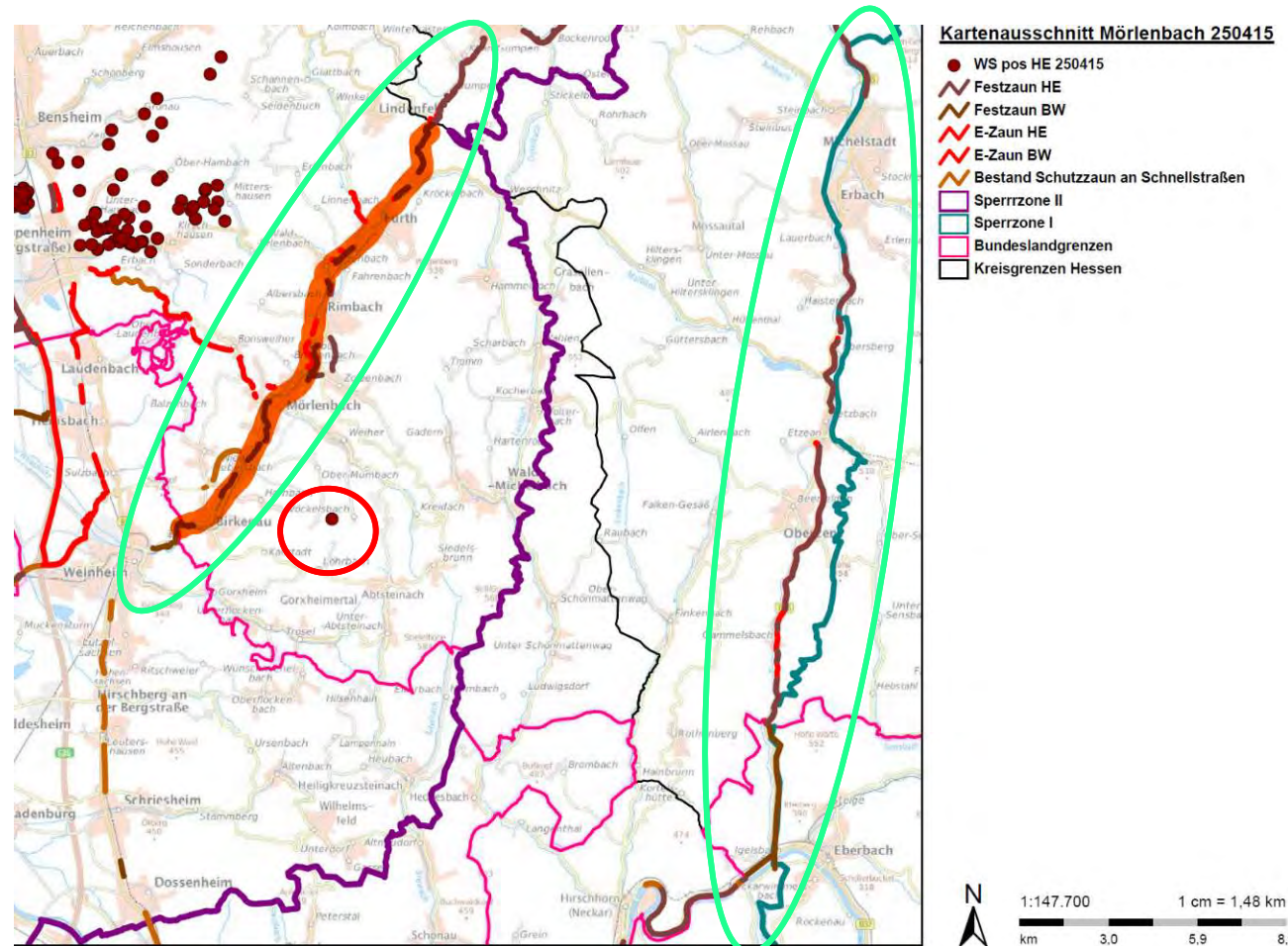
in the West:

B38 solid + electric fence

white zone around the core area

in the East:

B45 solid + electric fence





# Conclusions

- No outbreaks in kept porcine animal establishments
- ASF in southern part of Hesse still dynamic
- Eradication in metropolitan region very challenging
- ASF case in hunted young boar in the ASF high risk corridor in BB
- No further cases were found around the case in HE - Mörlenbach
- Surveillance and biosecurity in establishments keeping porcine animals + wild boar + hunting are in place
- Awareness campaigns are part of daily work



## Thanks to the colleagues of:

- Friedrich-Loeffler-Institute
- Ministries of all Bundesländer

Federal Ministry of Food and Agriculture  
Directorate 3  
Unit 323 – Animal Diseases -  
EU-Trade, International Affairs, Crisis Centre  
Rochusstr. 1  
53123 Bonn

Dr. Julia Blicke  
323@bmel.bund.de  
www.bmel.de  
Tel. +49 30 12 345-3423