



A.03.

Member States' rules concerning the characteristics and form of the marking of straws and other packages, in which the germinal products are placed, stored and transported

PAFF – Section Animal Health and Welfare

13 JULY 2021

Unit G2 – Animal Health

Commission Implementing Regulation (EU) 2020/999

- **laying down rules** for the application of Regulation (EU) 2016/429 of the European Parliament and of the Council **with regard to the approval of germinal product establishments and the traceability of germinal products of bovine, porcine, ovine, caprine and equine animals**
- *OJ L 221, 10.7.2020, p. 99*

Article 5(2) of Implementing Regulation (EU) 2020/999

- **Each Member State shall establish**, based on the technical requirements and specifications for marking set out in Part 1 of the Annex, **rules concerning the characteristics and form of the marking of straws and other packages**, in which the germinal products are placed, stored and transported, **used in its territory and it shall transmit that information to the Commission and to the other Member States**
 - Discussed already in September 2020 PAFF
 - The aim of the discussion:
 - ✓ the way of this transmission
 - ✓ the content

Traceability requirements for germinal products



Straws and other packages where semen, oocytes and embryos are placed **must be marked** in such a way that the following information can be readily established:

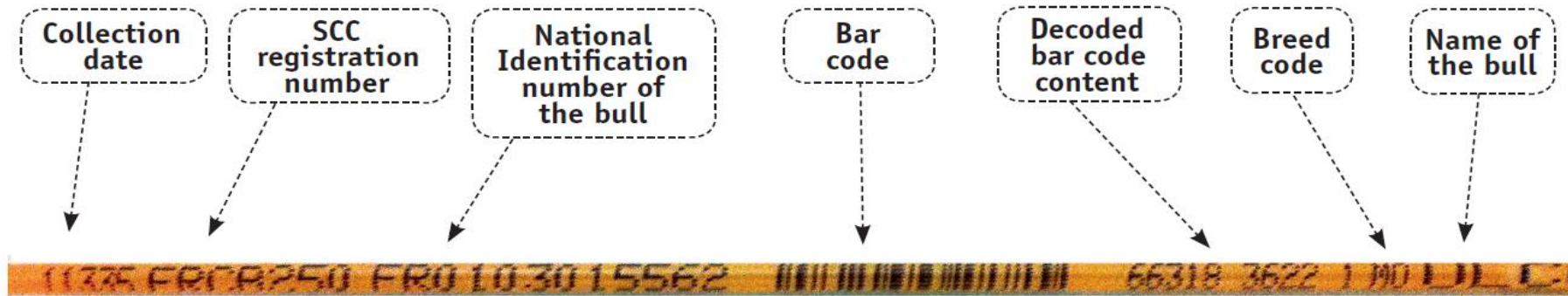
- **Date** of collection or production of the germinal products
- **Species** (subspecies) and **identification** of the donor animal(s)
- **Unique approval or registration number** of the establishment of collection or production, processing and storage of the germinal products including the **ISO 3166-1 alpha-2 code (or the name) of the country of origin**
- Any other relevant information

Elements of marking to be explained:



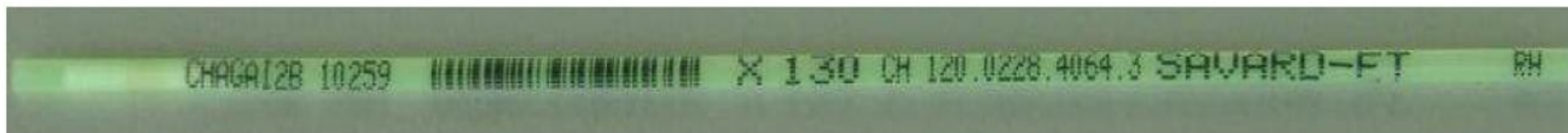
- **Date formats:** ddmmyy, yymmdd, dd/mm/yy, yy/mm/dd, dd.mm.yy, yy.mm.dd or the number of days since a fixed date expressed in as a 5-digit code
- **Species:** included or omitted and possible to be established based on the breed or approval number of the germinal product establishment
- **Numeric code for identification codes or approval number(s) of the germinal product establishment(s)**
- **Other relevant information:** such as the **name** of donor animal(s), **breed**, an indication of **sex** of the sex-sorted semen, **individual identification of porcine donor animal**
- Marking coded **electronically**

Examples:



2.1 Sequence of the imprinting on the straw

EU code	Producti on date	Bar code	Art icle code	Batc h number	Animal ID	Name of the bull	Bree d code
CHAGA102 B	10259	IIII III II III	X	130	CH 120.0228.4064.3	SAVARD-ET	RH



Examples:

Article code

This code represents the specificity of the semen doses, e.g. sexed semen. Different products (articles) can be produced from the same bull, depending on the processing procedure. In order to be able to distinguish these products, a process-specific code is necessary.

C ode	Specification
N	Standard semen
H	Heterospermic doses
X	Sexed semen (X)
Y	Sexed semen (Y)

Thank you



© European Union 2020

Unless otherwise noted the reuse of this presentation is authorised under the [CC BY 4.0](https://creativecommons.org/licenses/by/4.0/) license. For any use or reproduction of elements that are not owned by the EU, permission may need to be sought directly from the respective right holders.

Slide xx: **element concerned**, source: e.g. [Fotolia.com](https://www.fotolia.com/); Slide xx: **element concerned**, source: e.g. [iStock.com](https://www.istock.com/)

