



Food and
Veterinary Service
Republic of Latvia

ASF epidemiological situation in Latvia – 2016 (update)

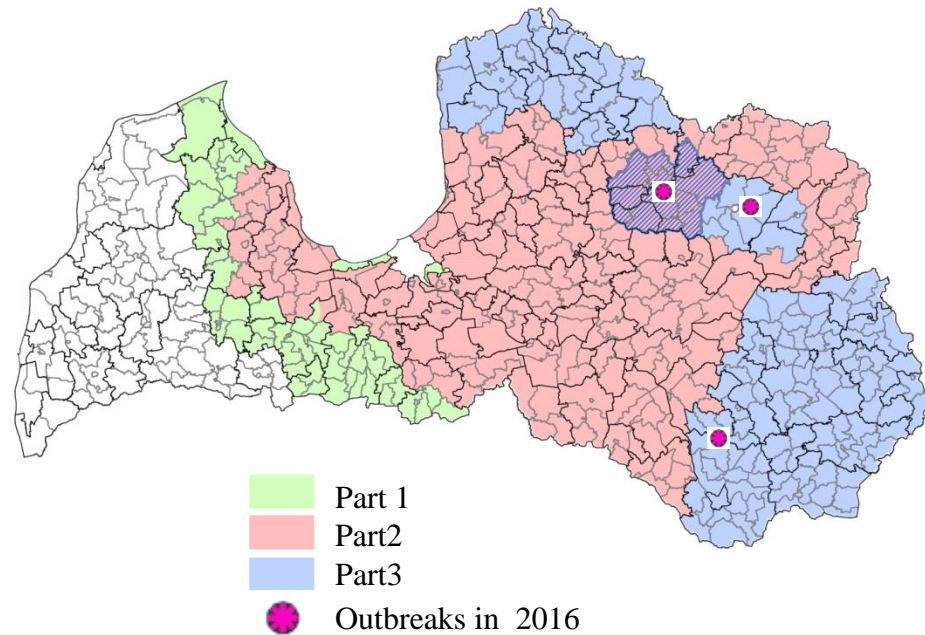
PAFF meeting,
Brussels, 4.&5.10.2016.



ASF outbreaks in 2016

	2014	2015	2016 (12.09.)
Outbreaks	32	10	3
Affected pigs	564	213	311

All measures according to Council Directive 2002/60/EC are still in place.





Food and
Veterinary Service
Republic of Latvia

ASF outbreak No 3 (in 2016)

Suspicion notified by farmer – on 21st September

119 pigs

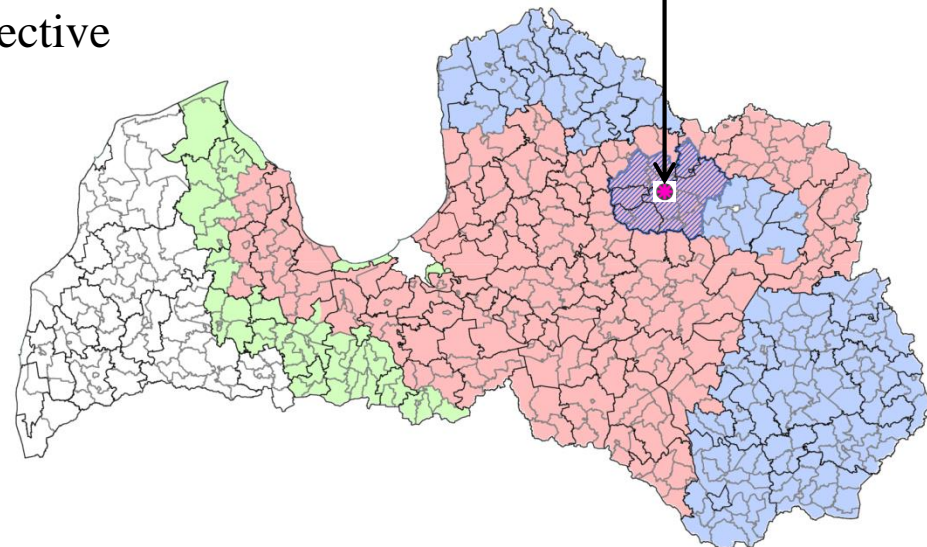
2 pigs with clinical signs (dead)

Confirmation – 22.09.2016

Outbreak confirmed in farm in the *Gulbenes parish, Rankas county*. Territory already defined as Part 2 by the Decision 2014/709/EU

All measures according to Council Directive 2002/60/EC implemented.

Stamping out and primary disinfection carried out on 22.09.2016.





ASF outbreak No 3

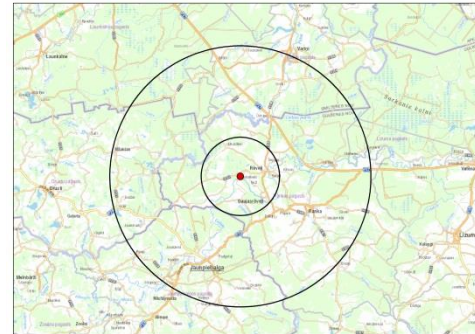
Measures within restricted zones

Clinical inspection performed on all holdings in protection and surveillance zones

Protection zone - **4** pig holdings

Surveillance zone – **5** pig holdings

Totally checked **227** addressees



During the surveillance in the restriction zones no additional holdings were suspected to ASF



Biosecurity controls (23.09.)

«Biosecurity rules» Order of the Cabinet of Ministers No 291 (9.06.2015.)

No of holdings	holdings inspected	% of inspected	holdings with pigs	% of inspected with pigs	compliant holdings	% of compliant holdings
9473	8206	87%	5096	62%	4616	91%

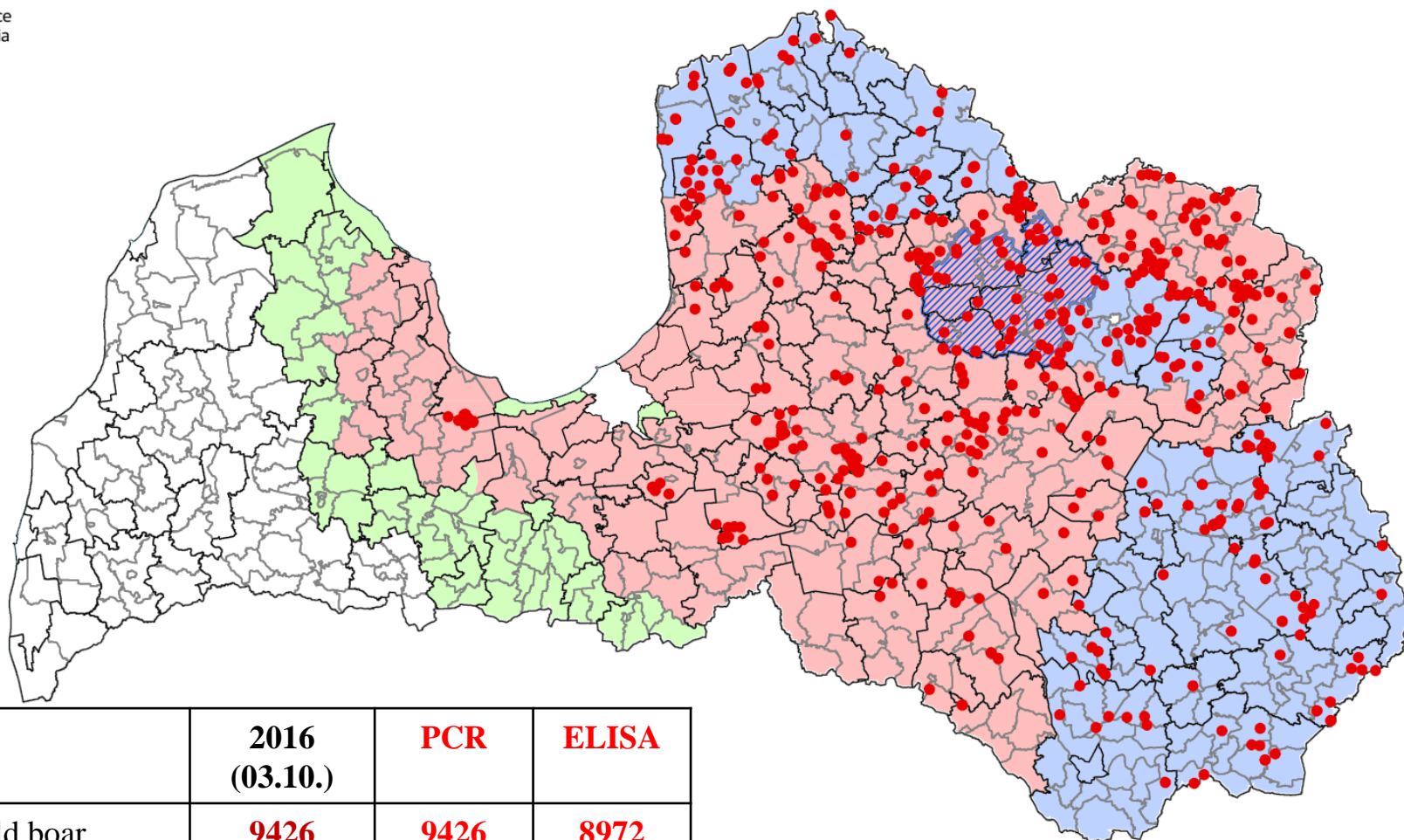
Part I, II and III - 2 x

Free area – 1 x



Food and
Veterinary Service
Republic of Latvia

Wild boar cases in 2016 (03.10.)



	2016 (03.10.)	PCR	ELISA
Wild boar Tested	9426	9426	8972
Wild boar cases	832	620	212
Hunted	409		
Found dead	423		

 Part 1
 Part 2
 Part 3



Food and
Veterinary Service
Republic of Latvia

Thank you for your attention!