

# Aethina tumida in Italy: Update on epidemiological situation and response measures

---

Franco Mutinelli  
NRL for beekeeping

STANDING COMMITTEE ON PLANTS, ANIMALS, FOOD AND FEED  
Animal Health and Welfare

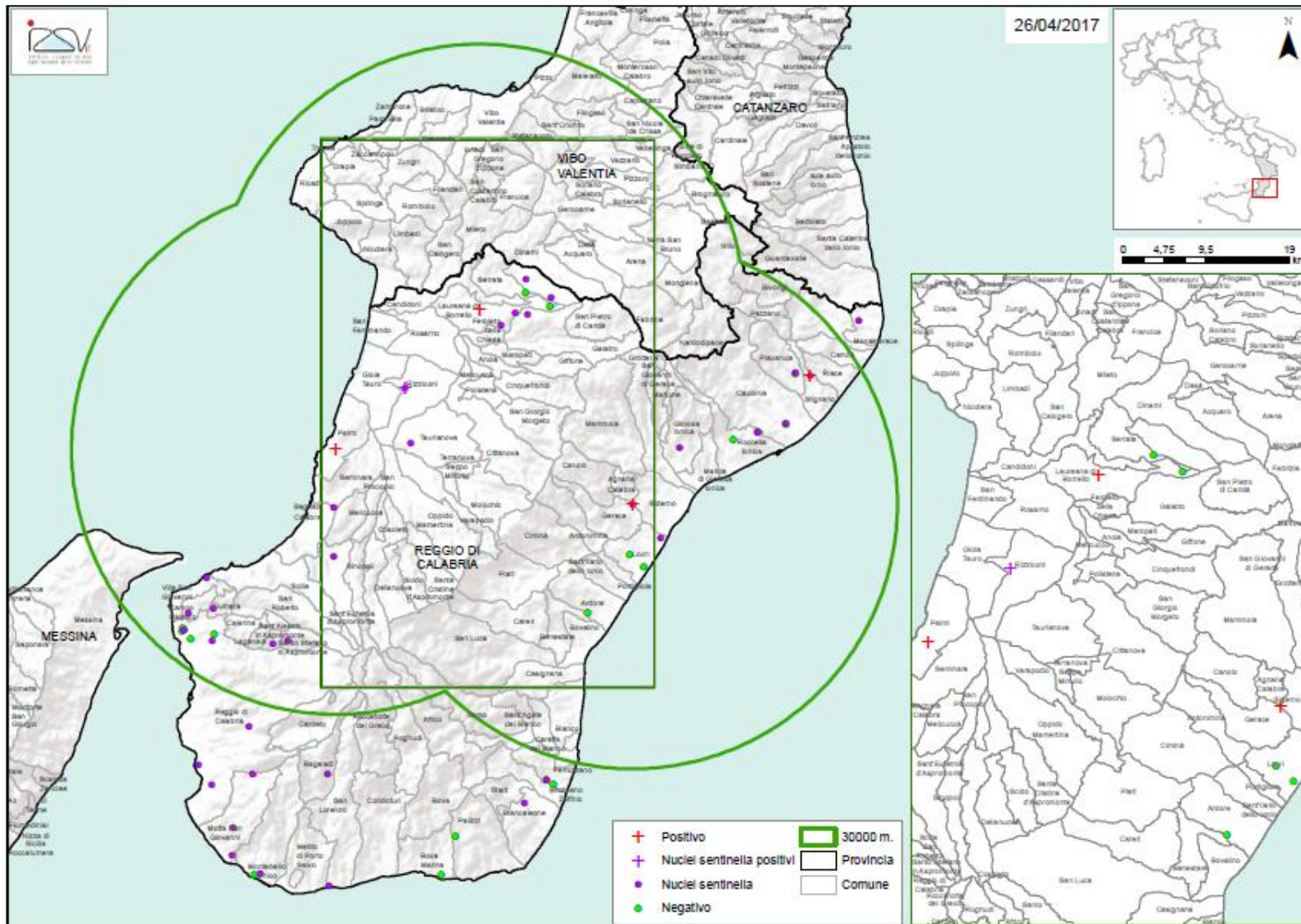
Brussels, 16 May 2017

# Epidemiological situation - March 2017

Infested colonies detected in the protection zone of 20 km around Gioia Tauro (RC):

- ✓ On 17 March 2017, municipality of Palmi (RC): 1 apiary
- ✓ On 22 March 2017, municipality of Rizziconi (RC): a sentinel honey bee nucleus colony
- ✓ On 28 March 2017, municipality of Laureana di Borrello (RC): 1 natural colony
- ✓ On 30 March 2017, municipality of Siderno (RC): 1 apiary

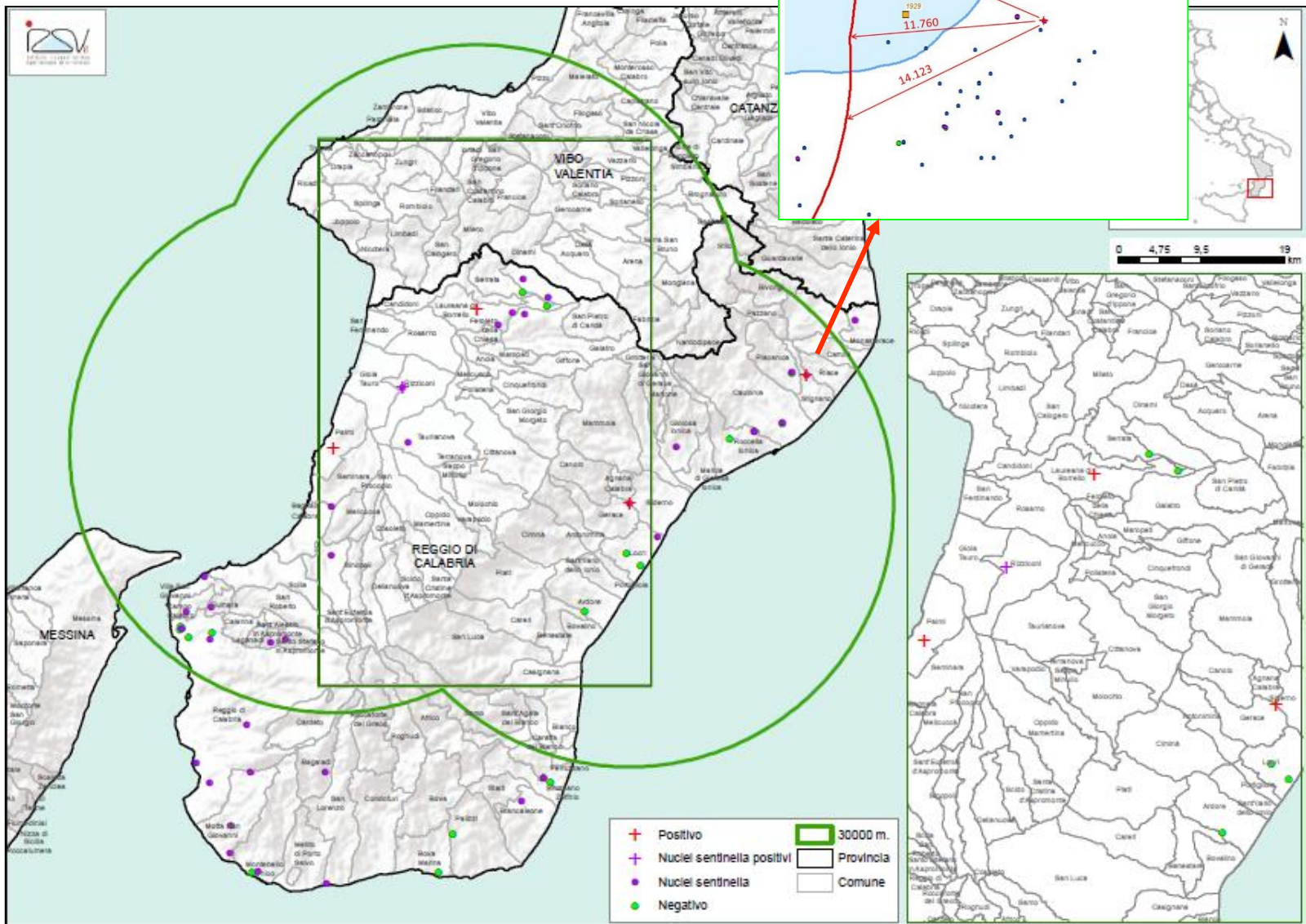
# Epidemiological situation: March 2017



# Epidemiological situation - April 2017

- ✓ A new SHB infested apiary has been confirmed in the municipality of Stignano (RC)
- ✓ Approx. 10 km from the outer border of the protection zone of 20 km established in Gioia Tauro in September 2014
- ✓ An apiary located 500 m apart is negative

# Stignano: April 2017

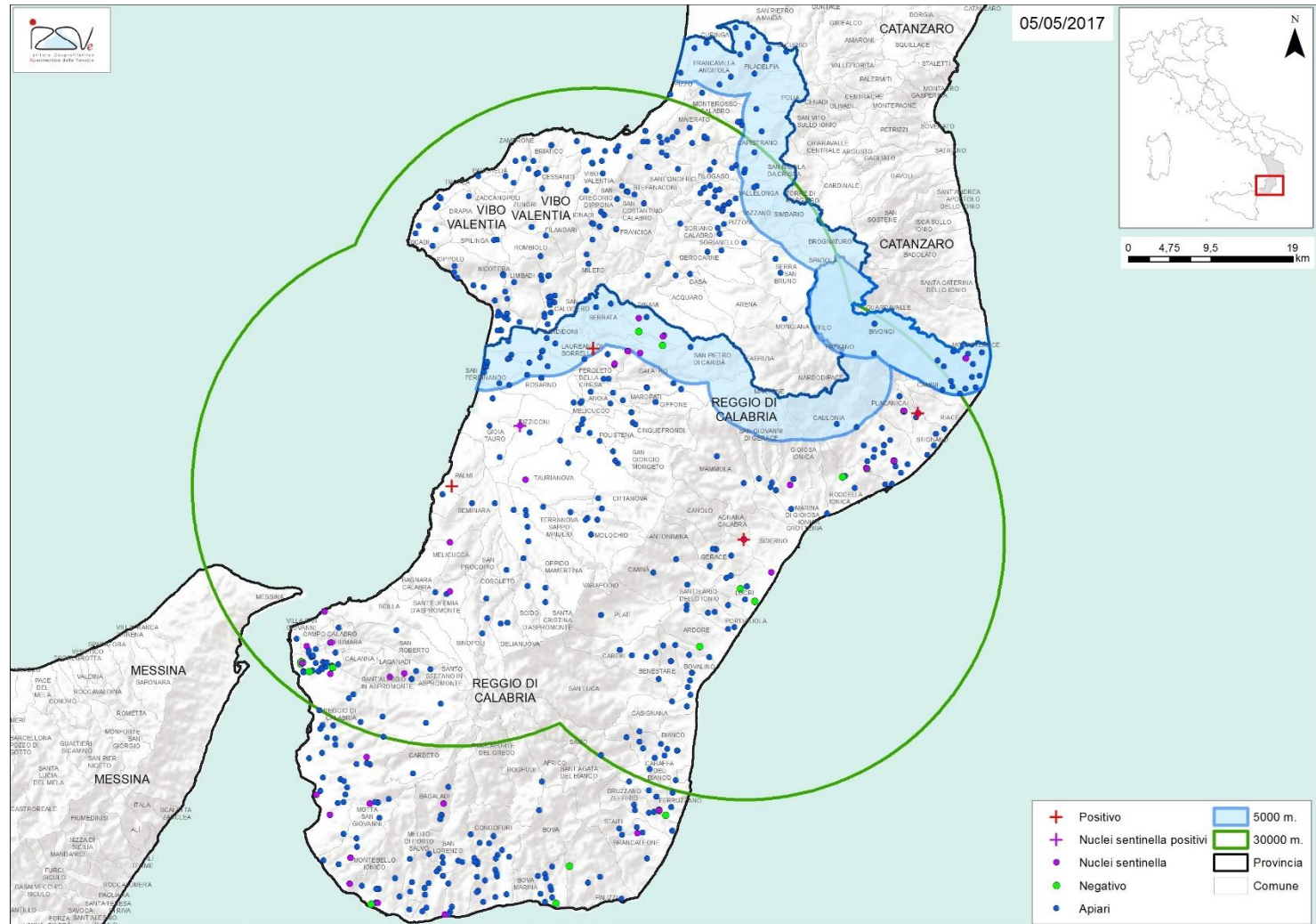


# Measures adopted - May 2017

- 1) The original protection zone of Gioia Tauro extended for 10 km (total radius = 30 km)
- 2) The whole province of Reggio Calabria is protection zone (movement allowed only after notification to veterinary services)
- 3) Zone of attention of 5 km at the north border of the province of Reggio Calabria (no movement allowed)
- 4) The province of Vibo Valentia is included in the new protection zone (movement allowed only after notification to veterinary services)
- 5) Zone of attention of 5 km at the north border of the province of Vibo Valentia (no movement allowed)
- 6) Further investigations planned in the province of Vibo Valentia

N. prot. DGSAF in Docspa/PEC 0011854-10/05/2017-DGSAF-MDS-P

# Epidemiological situation 2016

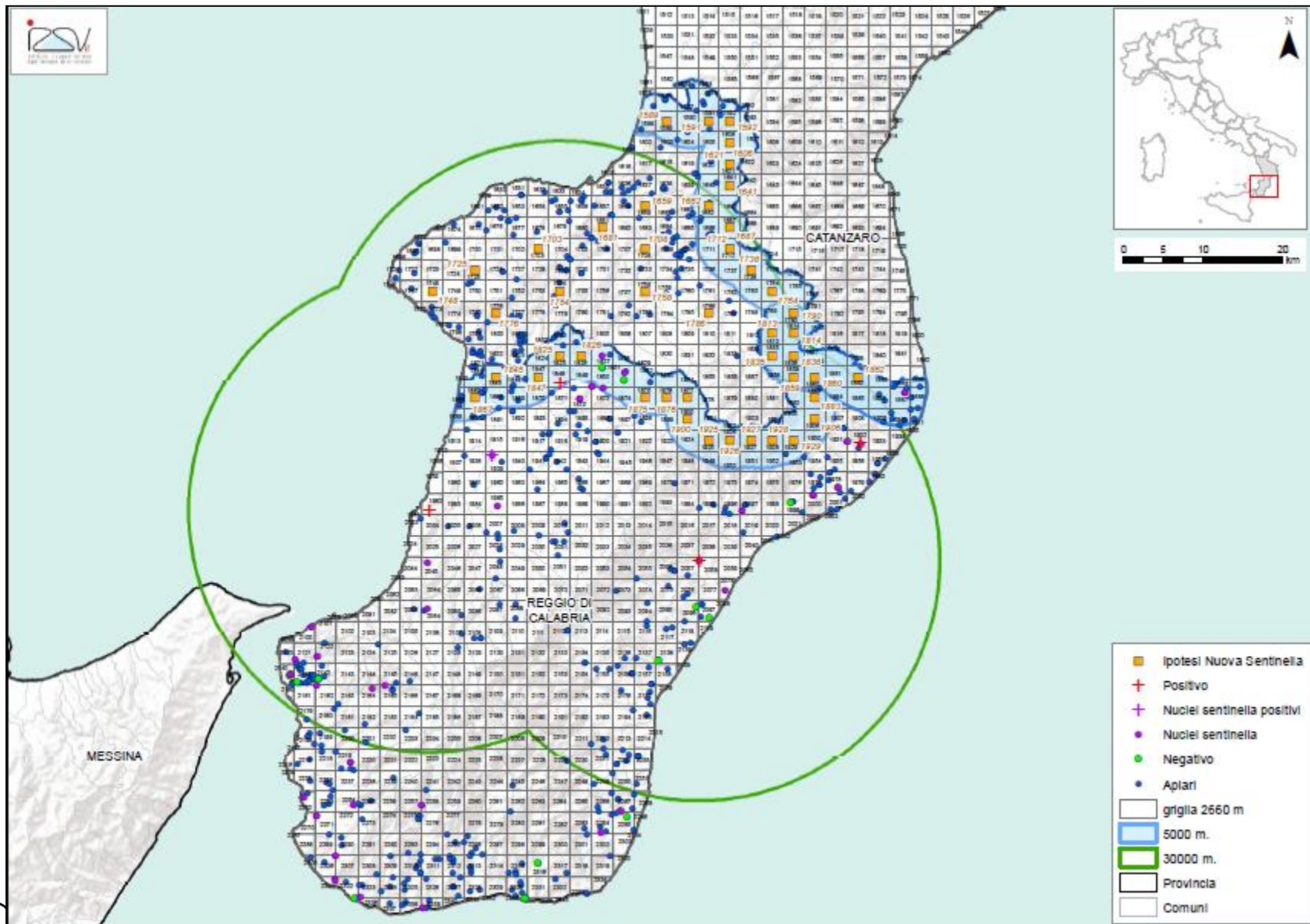


# Questions posed by the new findings

- 1) It is the earliest detection ever, normally we only discovered infested apiaries in September or July (Cosenza, 2016)
- 2) sentinel colonies were positive in April 2016
- 3) the apiaries in Siderno and Stignano are on the Ionian Sea side of Calabria region, this means that SHB crossed the mountains
- 4) what are the ramifications? (another Sicily or Cosenza or another Gioia Tauro)
- 5) the apiary in Stignano belongs to a beekeeper who owns 2 other apiaries in the protection zone (can be positively linked to a person); new clinical inspection during this week
- 6) epidemiological inquiries in progress
- 7) new sentinel honey bee nucleus colonies to be positioned



# Sentinel honey bee nucleus colonies



Thank you for your attention