

## Declaration of freedom from Bluetongue virus serotype 4 in Portugal

PAFF Standing Committee  
Brussels, 25 October 2017

### BLUETONGUE IN PORTUGAL

Mandatory notification since 1956

**BTV4** first reported in 2004  
Freedom from 2010 to 2013

**Last reported in 2013**

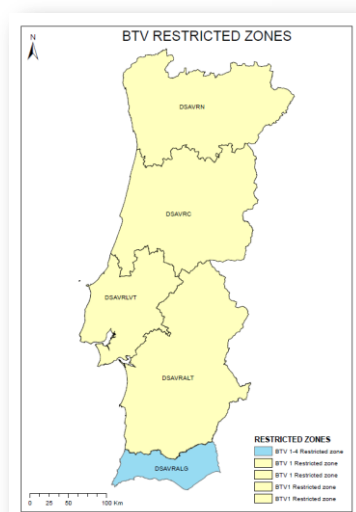
**BTV1** first reported in 2007  
Present in 2017

#### Restricted zones:

BTV1 – 5 Regions (all the mainland)

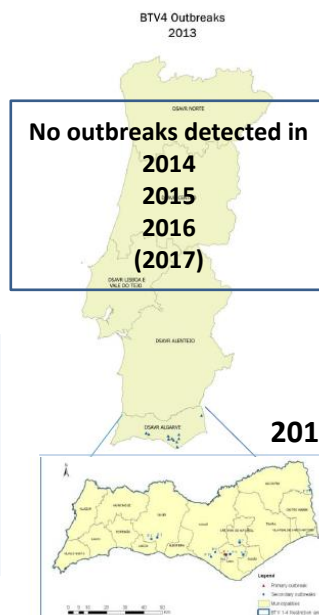
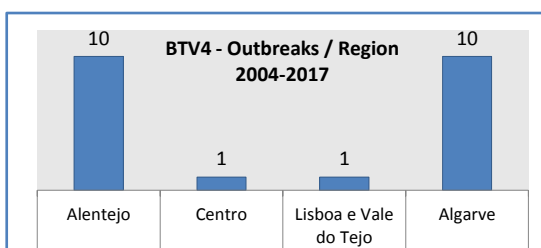
#### BTV4 – Algarve Region

- Vaccination program
- Entomological surveillance
- Clinical surveillance
- Serological and virulogical surveillance



## BTV4 OUTBREAKS

Year	DSAVR N	DSAVR C	DSAVR LVT	DSAVR ALT	DSAVR ALG	Total
2004	0	1	0	10	0	11
2006	0	0	1	0	0	1
2013	0	0	0	0	10	10



## BTV4 VACCINATION CAMPAIGNS



BTV4 vaccination is **compulsory** for sheep (adults and replacement stock) with annual revaccination in the restricted area – Algarve

Mandatory vaccination					
Year	Vaccine type	Nº vaccinated herds in BTV4 restricted area	Herds coverage	Nº vaccinated animals in BTV4 restricted area	Animals coverage
2014	Inactivated	719	90%	36.008	91%
2015	Inactivated	715	93%	34.398	81%
2016	Inactivated	737	89%	37.525	95%

Voluntary vaccination		
Year	Nº vaccinated ovine	Nº vaccinated bovine
2014	1.053	110
2015	833	1.020
2016	779	10.983

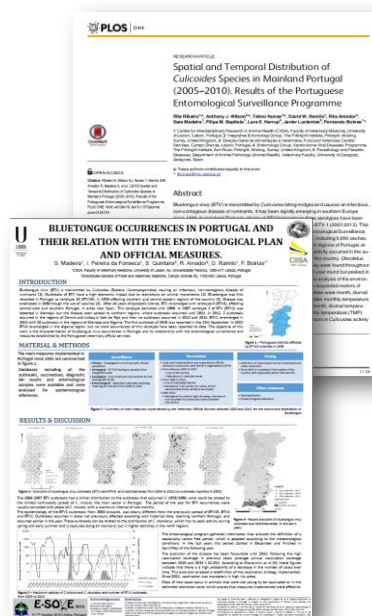
BTV4 vaccination is **voluntary** for:

- bovine in Algarve
- sheep and bovine in the adjacent area of Alentejo

## ENTOMOLOGICAL SURVEILLANCE

Since 2005 studies carried out by the Faculty of Veterinary Medicine of the Technical University of Lisbon, provide detailed information about the **geographic distribution, abundance and persistence** of potential vectors species of ***Culicoides sp***, in different periods of the year in Portugal.

The results made possible to know the **seasonal patterns** of *Culicoides* and define, based on historical data, **climatic conditions** and **periods of activity** of the vector.



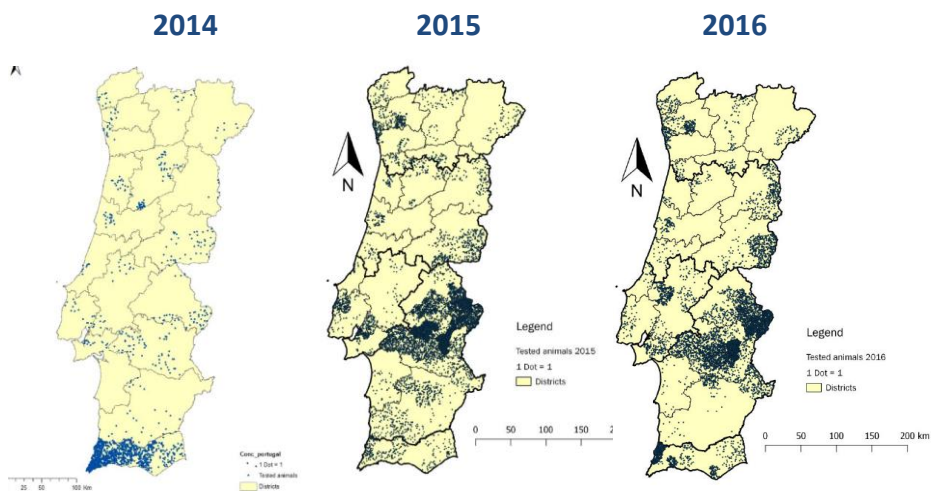
## SEROLOGICAL AND VIRUSOLOGICAL SURVEILLANCE



Source	2014				2015				2016			
	Serology ELISA		Virology RT-PCR		Serology ELISA		Virology RT-PCR		Serology ELISA		Virology RT-PCR	
	Nº tests	Nº + tests	Nº tests	Nº + to BTV4	Nº tests	Nº + tests	Nº tests	Nº + to BTV4	Nº tests	Nº + test	Nº tests	Nº + to BTV4
PMT	25	9	1.268	0	0	0	41531	0	0	0	17154	0
Sentinel	1428	99	99	0	2599	74	74	0	2586	158	158	0
Clinical Susp.	15	3	19	0	0	0	215	0	0	0	328	0
<b>Total</b>	<b>1,468</b>	<b>111</b>	<b>1,386</b>	<b>0</b>	<b>2,599</b>	<b>74</b>	<b>41,820</b>	<b>0</b>	<b>2,586</b>	<b>158</b>	<b>17,640</b>	<b>0</b>

PMT – pre-movement tests

## SEROLOGICAL AND VIRULOGICAL SURVEILLANCE - SAMPLES GEOGRAPHICAL DISTRIBUTION



## CONCLUSIONS



- BTV1 is still present and each clinical suspicion is tested to BTV4
- Demonstrative data was gathered under the active surveillance program (sentinels and pre-movement tests)
- No evidence of viral circulation of BTV4 was detected since last outbreak in 2013.

## CONCLUSIONS



Considering that:

- ✓ Bluetongue is a **mandatory notifiable disease** in Portugal since 1956 (Portaria nº 15 959 of 4<sup>th</sup> September 1956) and this condition is reinforced Decree-Law nº 146/2002, of 21<sup>st</sup> May 2002;
- ✓ The results of clinical, serological/virulogical surveillance implemented in the continental territory are **negative for BTV4 since November 2013**;

The absence of BTV4 infection is demonstrated during at least the preceding **24 months** in susceptible domestic ruminant populations as required in the OIE "Terrestrial Animal Health Code 2016" (Chapter 8.3, Article 8.3.3, a).

Portuguese Veterinary Authority considers that the conditions to declare freedom from BTV4 infection in Portugal are fulfilled



**Thank you for your attention**

