



# PPR EPIDEMIOLOGICAL SITUATION

- UPDATE -



ROMANIA

SCoPAFF

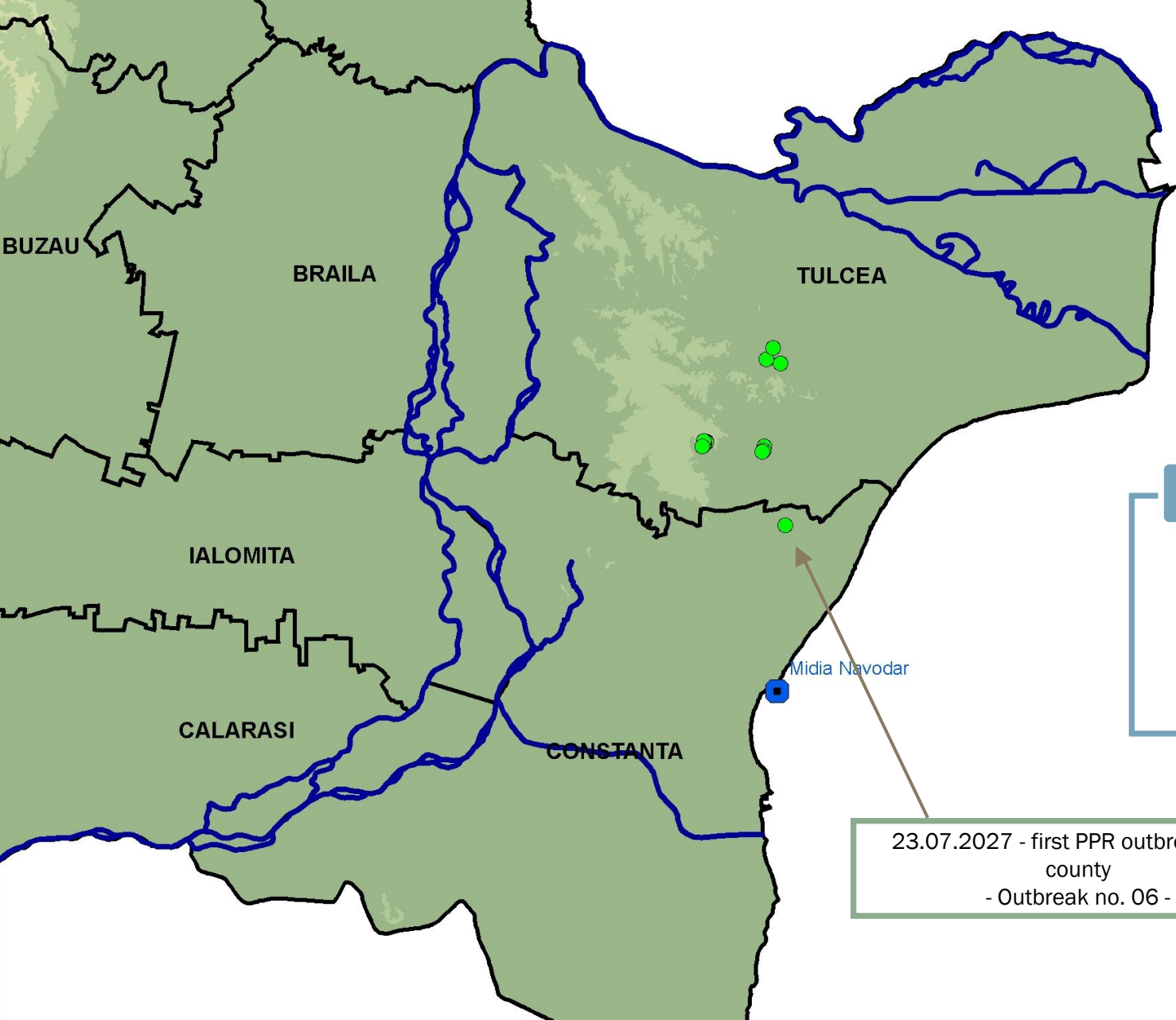
28.08.2024



# First PPR outbreak in RO - 19.07.2024

**Legend**

- Port\_Midia\_Navodari Events
- judete
- PMR\_19\_24\_07\_2024
- dunarea



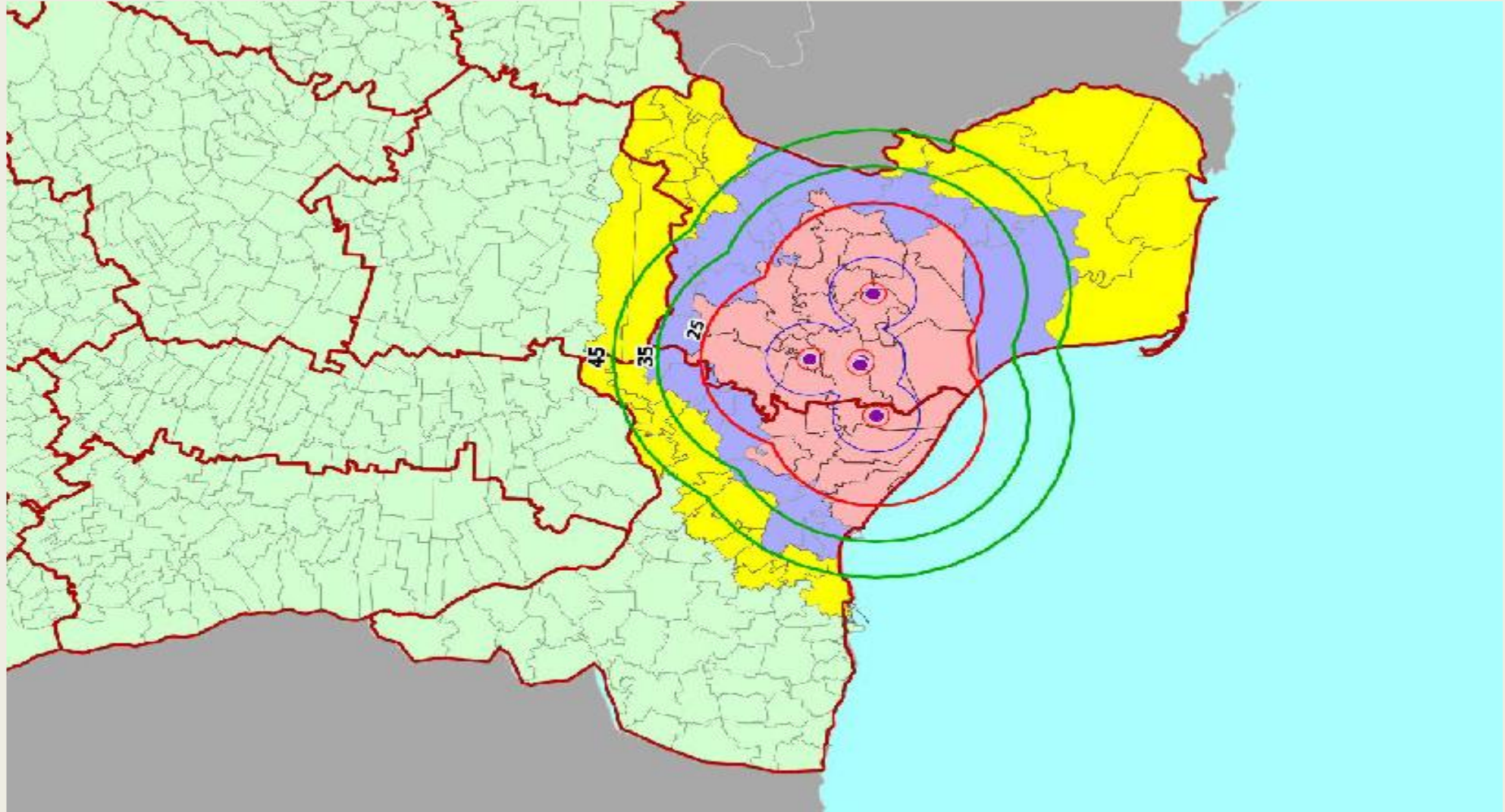
## 19 - 24.07.2024:

- 4 big comm farms
- 7 small comm farms
- 6 backyards
  
- TOTAL ~ 100.000 sheep and goats

23.07.2027 - first PPR outbreak in CT county  
- Outbreak no. 06 -

BLACK SEA

# CID (EU) 2024/2119 of 29 July 2024

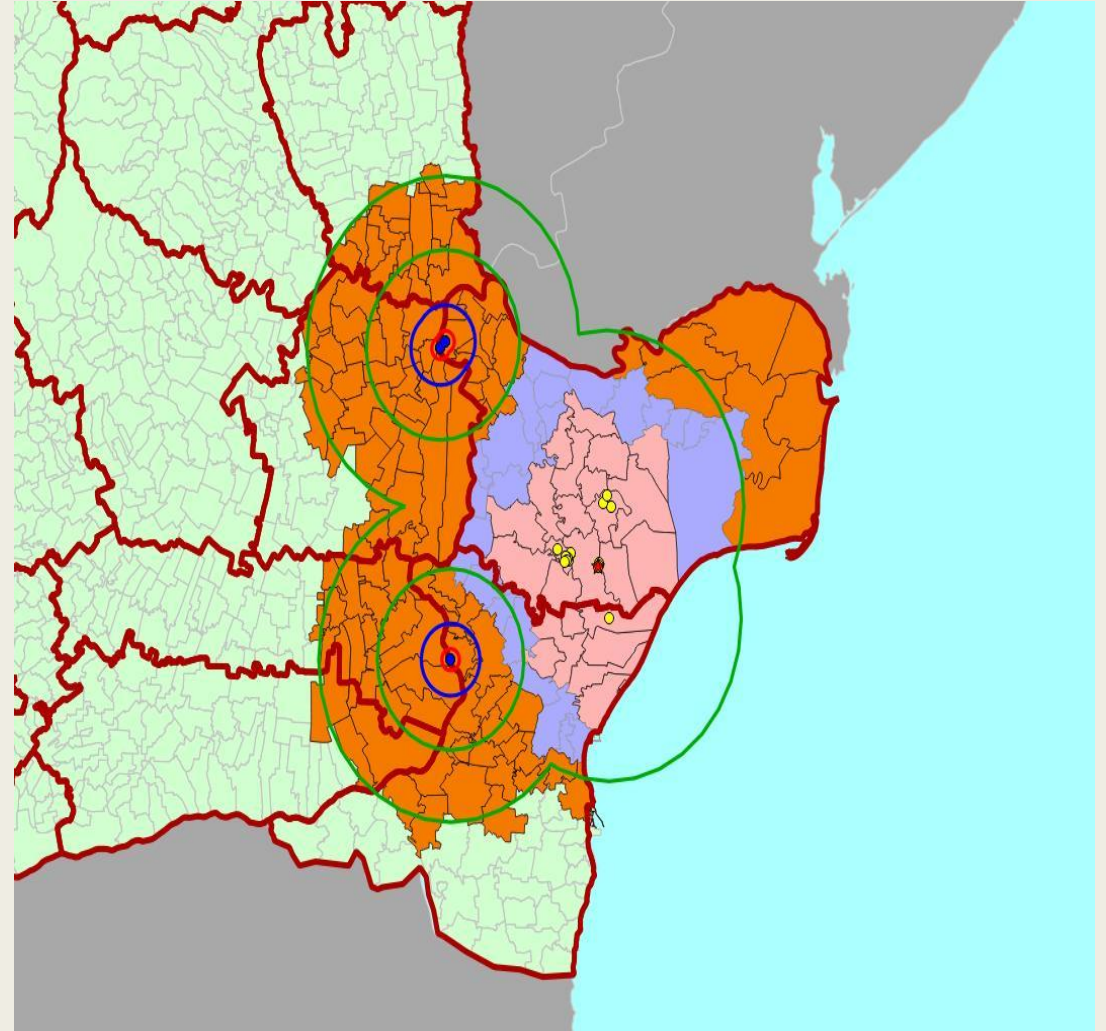
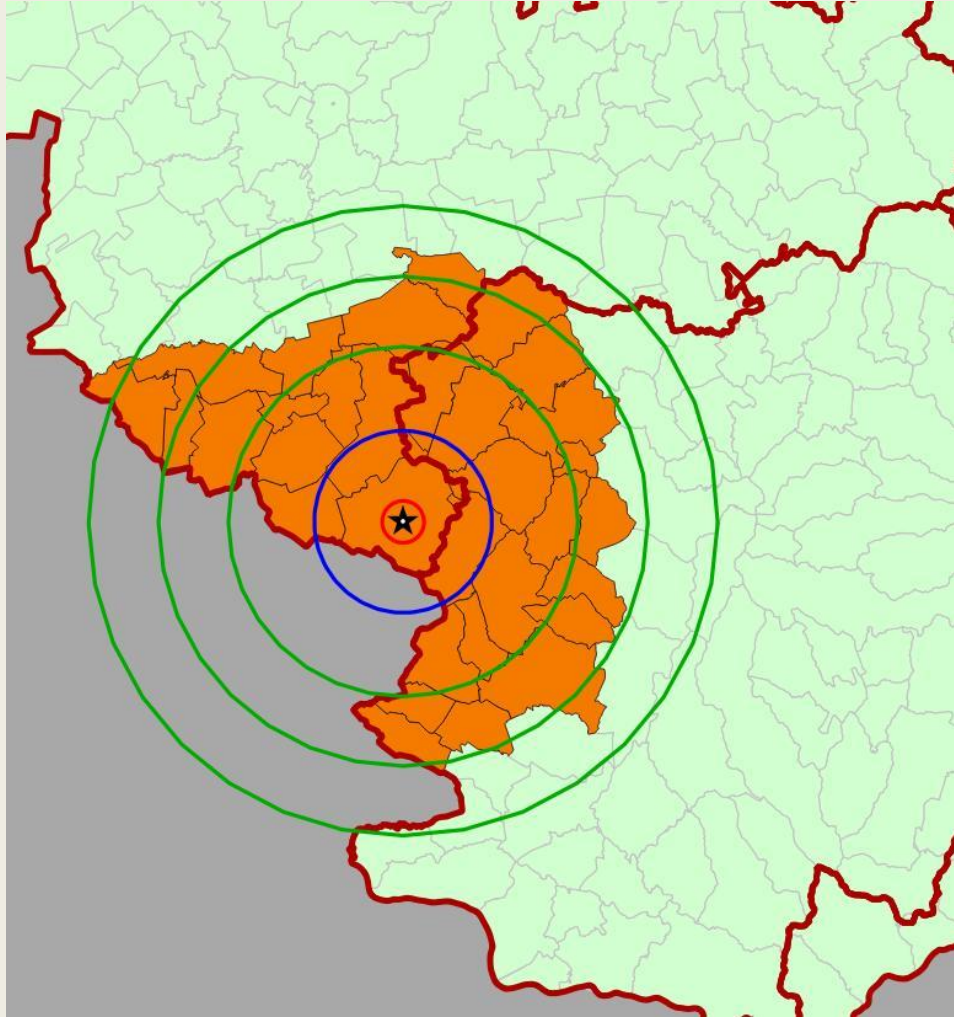


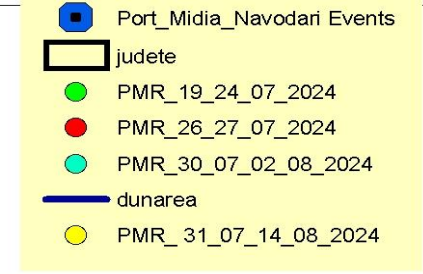
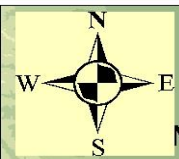


19 - 30.07.2024:

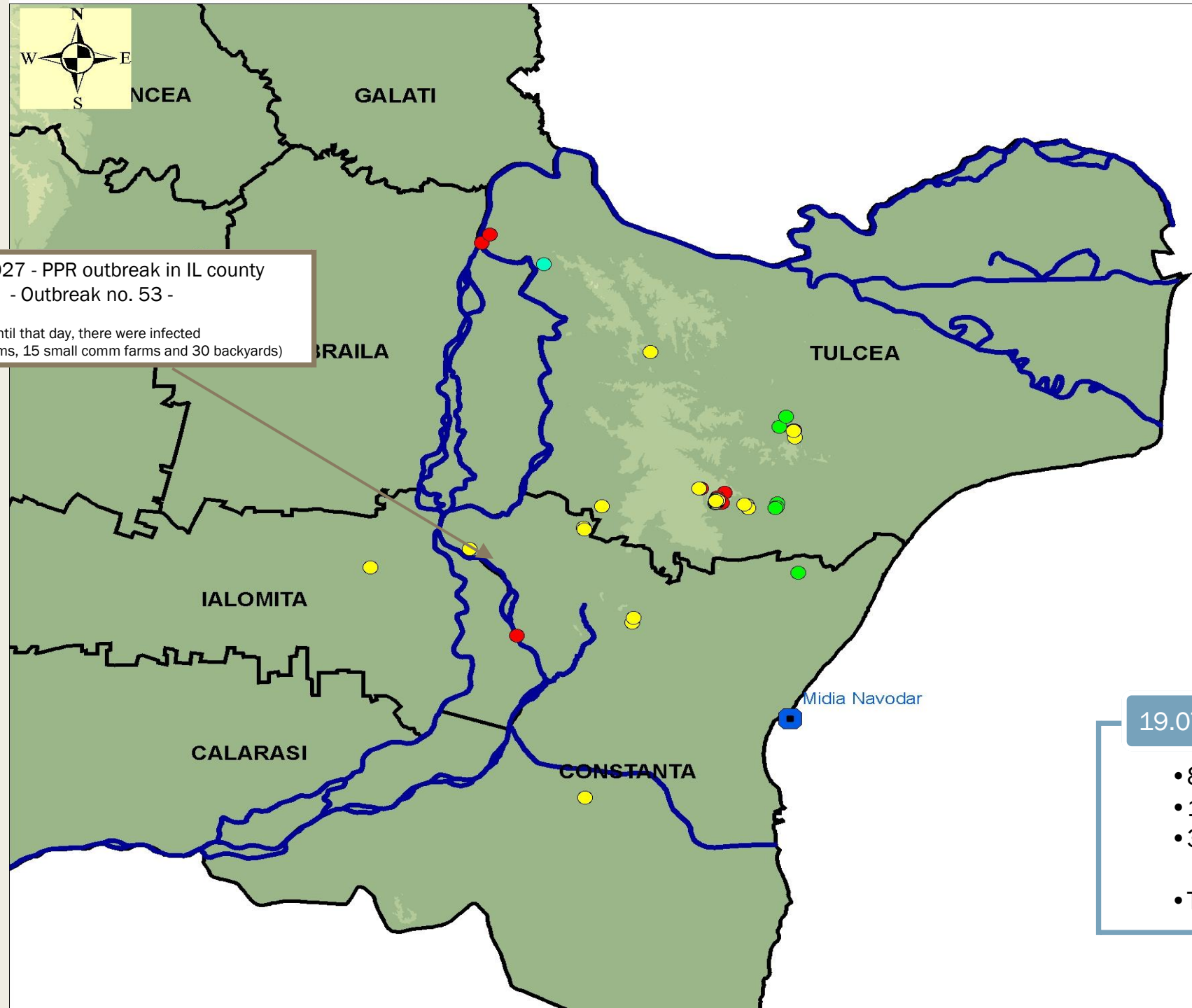
- 8 big comm farms
- 14 small comm farms
- 15 backyards
- TOTAL ~200.000 sheep and goats

# CID (EU) 2024/2154 of 06 August 2024





04.08.2027 - PPR outbreak in IL county  
- Outbreak no. 53 -  
  
(Until that day, there were infected  
8 big comm farms, 15 small comm farms and 30 backyards)

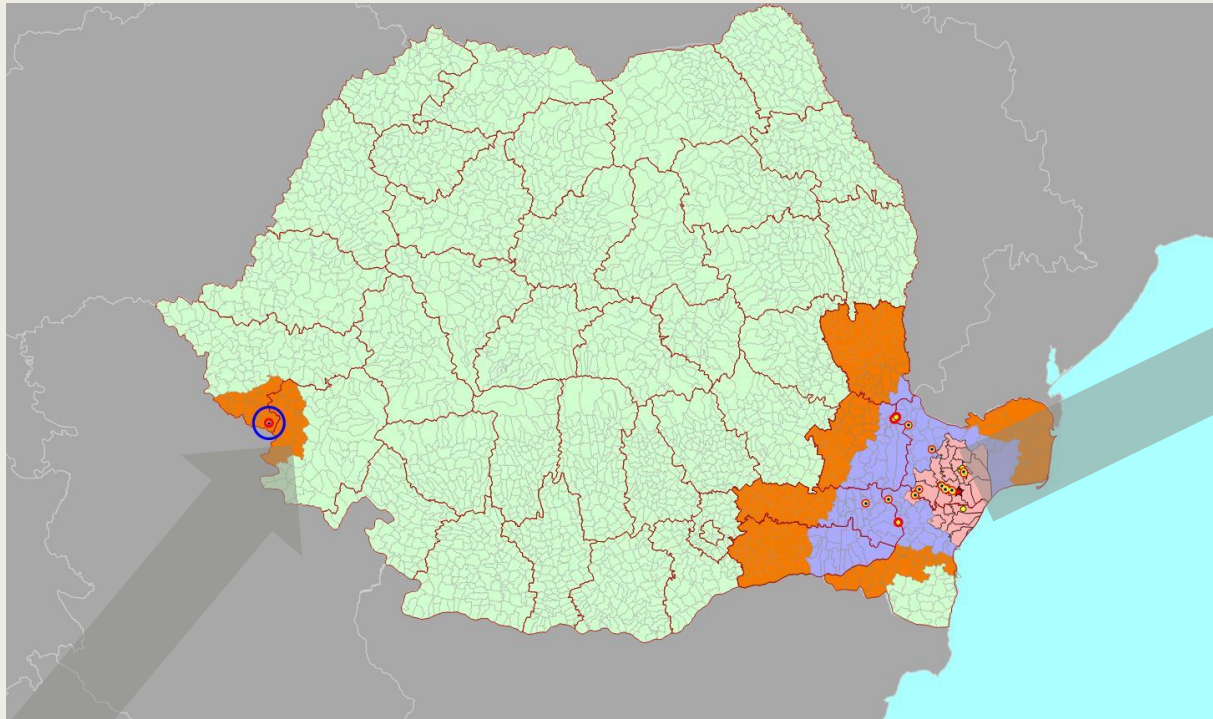


19.07 - 14.08.2024:

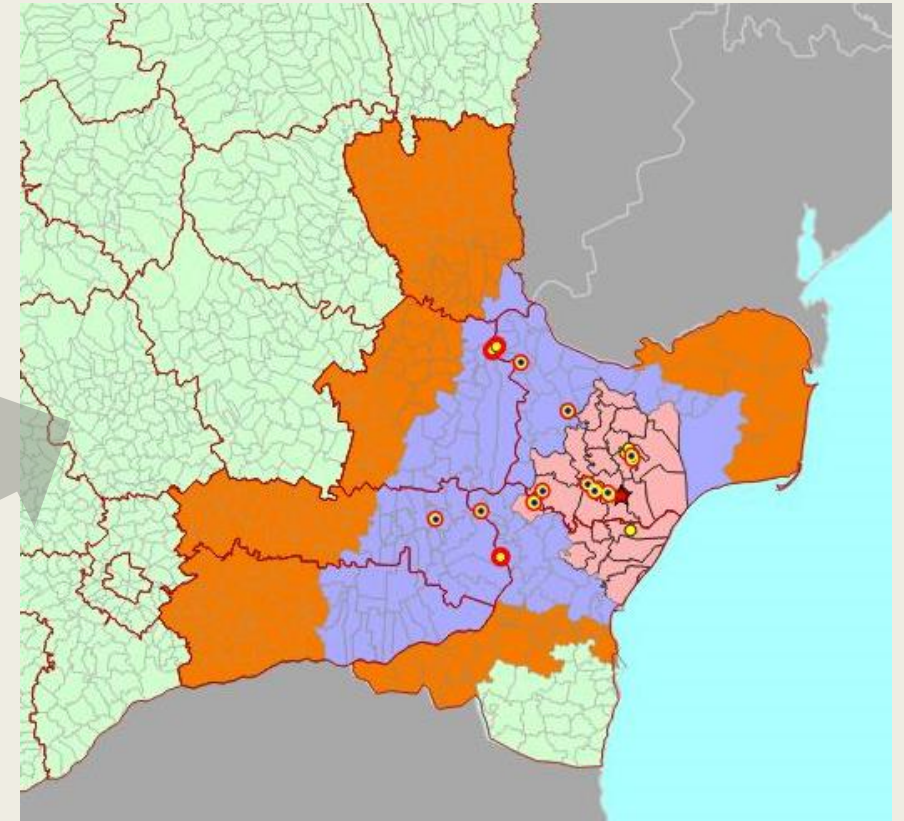
- 8 big comm farms
- 15 small comm farms
- 37 backyards
  
- TOTAL ~222.000 sheep and goats

BLACK SEA

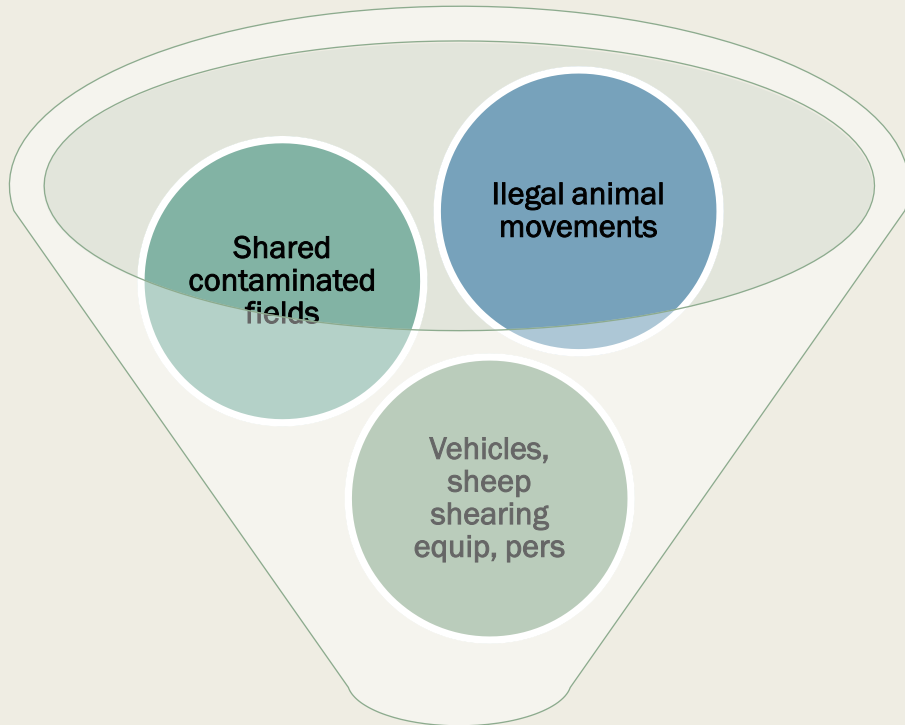
# Proposal for CID amendment



1 New outbreak on 26.08.2024- in Timis county, Clopodia village  
investigations is on going

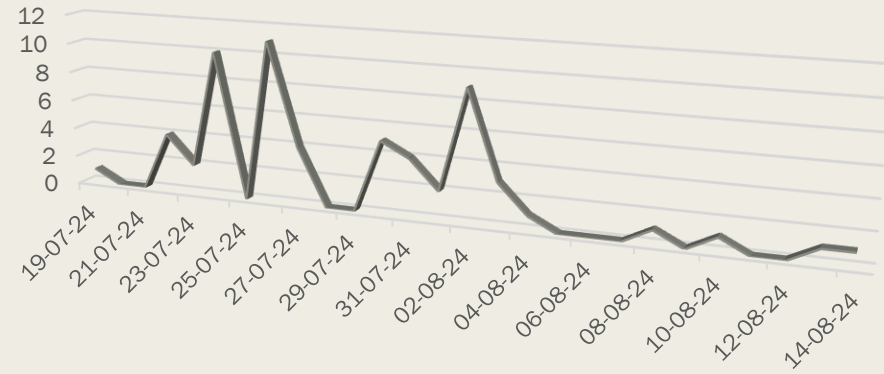


NO outbreaks between 14.08.2024-25.08.2024

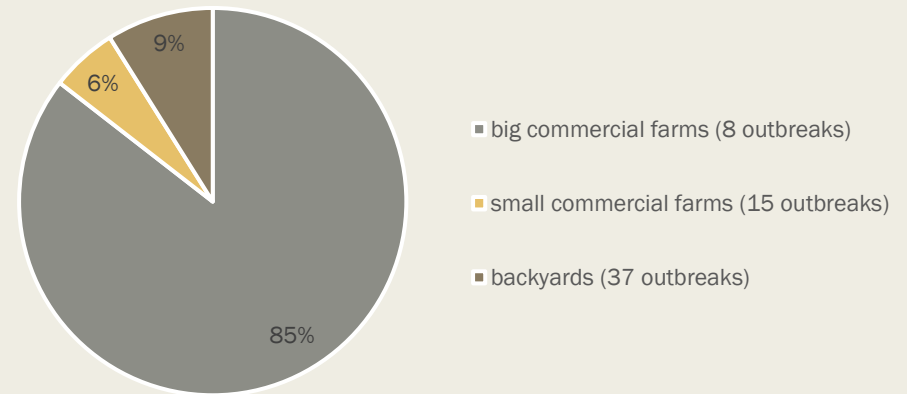


**61 outbreaks in 39 days**  
**~ 222.000 animals affected**

No. of PPR outbreaks



Affected animals/type of holding





From EUVET recommendations:  
provisions on appropriate biosecurity  
measures for people and means of transport

- **Check on compliance with the movement ban** at the entrance/exit/within the county (inter-institutional collaboration established by the CLCB decision)
- Appropriate **biosecurity measures for persons** coming into contact with animals in possession or entering or exiting the facility. Example: people who shear animals. Replacing single-use plastic equipment with easy-to-disinfect rubber equipment
- Appropriate **biosecurity measures for vehicles** entering or leaving the facility. Avoiding, as the case may be, the entry of animal/fodder transport means into the holding.

29.07 – 01.08.2024  
EUVET mission

# Additional measures

- **National Center for Disease Control Decision**
- **Traffic controls** (Vets&Police&Jandarms) to identify and discourage illegal movements of sheep and their products;
- **Intensified checks** on compliance with biosecurity measures, movement restrictions
- Awareness campaigns on **biosecurity measures**.
- **Intensified sampling**

## Samples from NEGATIVE holdings (whole country)

PCR	serology
482	2719