

The National Sanitary Veterinary and Food Safety Authority of Romania



EPIDEMIOLOGICAL SITUATION - ASF



SCoPAFF

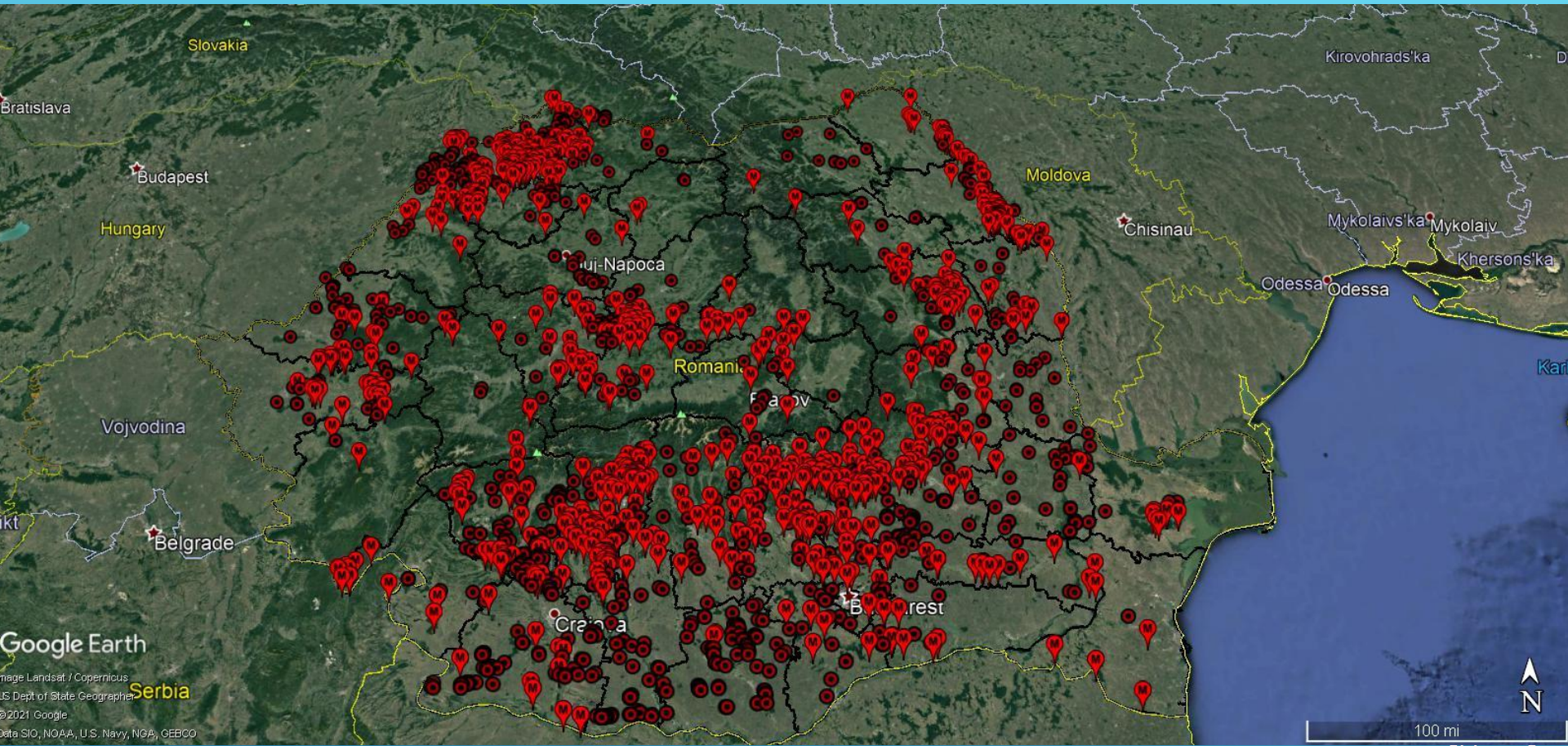
11.02.2020



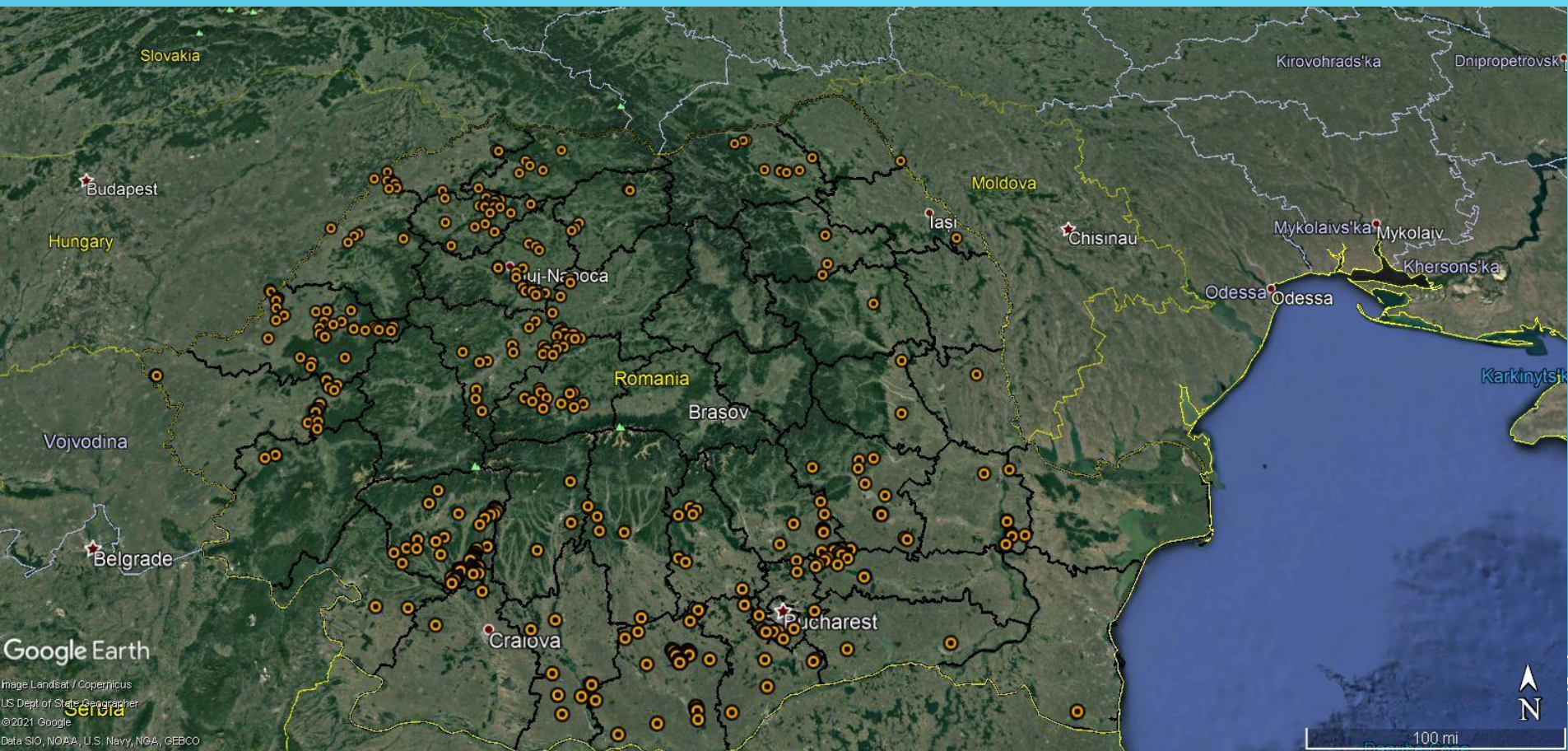
ASF - EPIDEMIOLOGICAL SITUATION

01.01-08.02.2021

| DOMESTIC PIGS | | WILD BOARS | | |
|------------------------------------|----------------------------------|-----------------------|-------------------------------|-----------------------------------|
| No. of confirmed outbreaks | No. of active outbreaks | No. of positive cases | No. of positive found dead wb | No. of positive hunted wild boars |
| 134 | 134 from 2021 + 271 from 2020 | 474 | 192 | 277 |
| From which, 6 in big comm.farms | 405 total | | | |



MAP OF OUTBREAKS AND CASES 2020



MAP OF ACTIVE OUTBREAKS



The National Sanitary Veterinary and Food Safety Authority of Romania

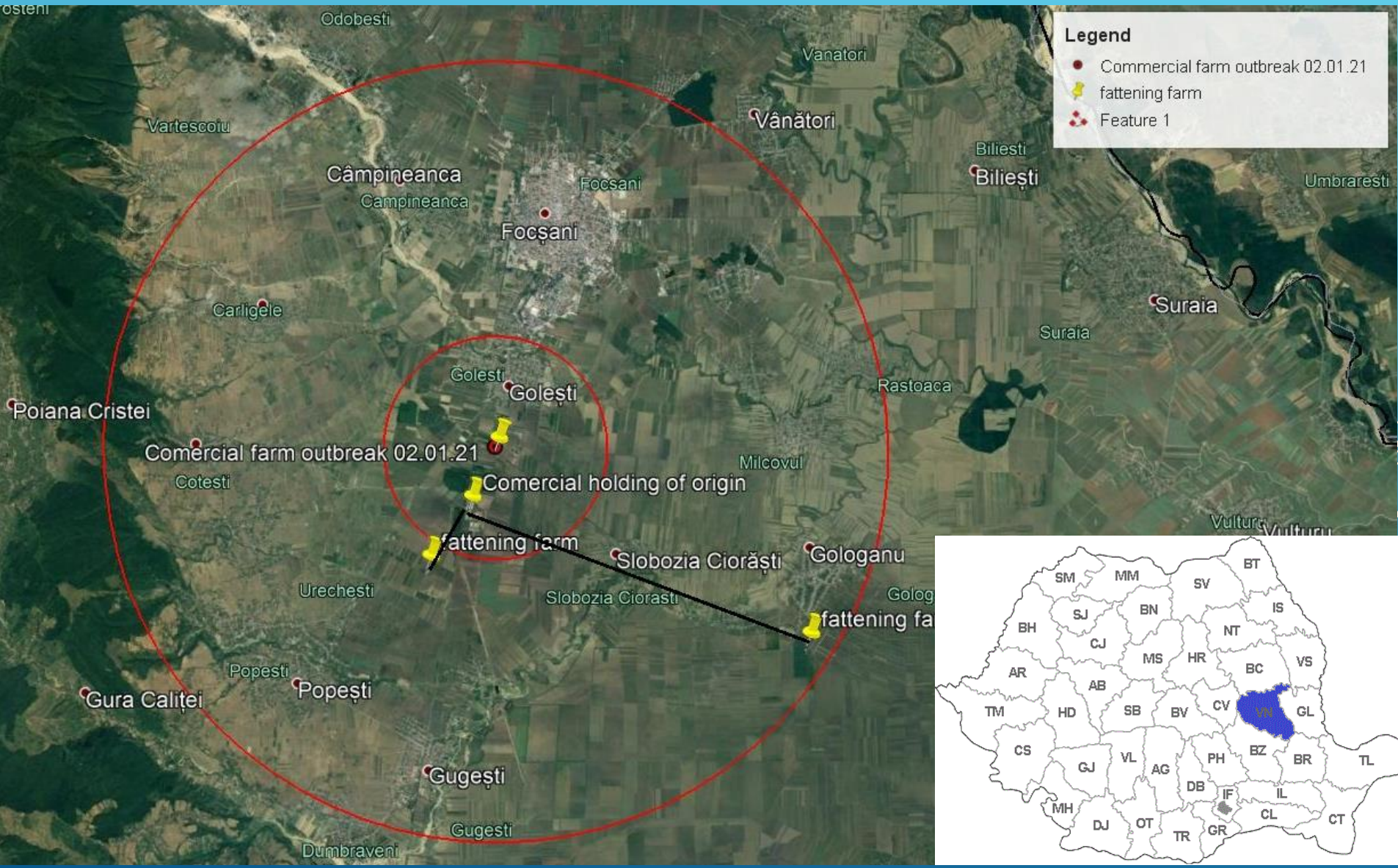
INFORMATION REGARDING THE USE OF DEROGATION OF REMOVAL OF PIGS FROM A HOLDING WITHIN THE RESTRICTION ZONE

1. VN COUNTY

In this exceptional situation, we grant the derogation of removal of pigs from the blocked farms situated in the surveillance zone to:



1. VN COUNTY





Surveillance in the holding which requested the derogation for the living piglets

Dates for the pasive surveillance:

03.01.2021- 5 sets of samples from organs

14.01.2021 – 3 sets of samples from organs

22.01.2021 -5 sets samples from organs

Before the transport all the tests showed negative results and the clinic examination showed no signs of disease.

Destination holdings for the piglets movements:

The piglets were transferred in two empty holdings located in the same restriction zone of the same outbreak

The piglets from both holdings are under official surveillance and until this moment there were not registered any mortalities.



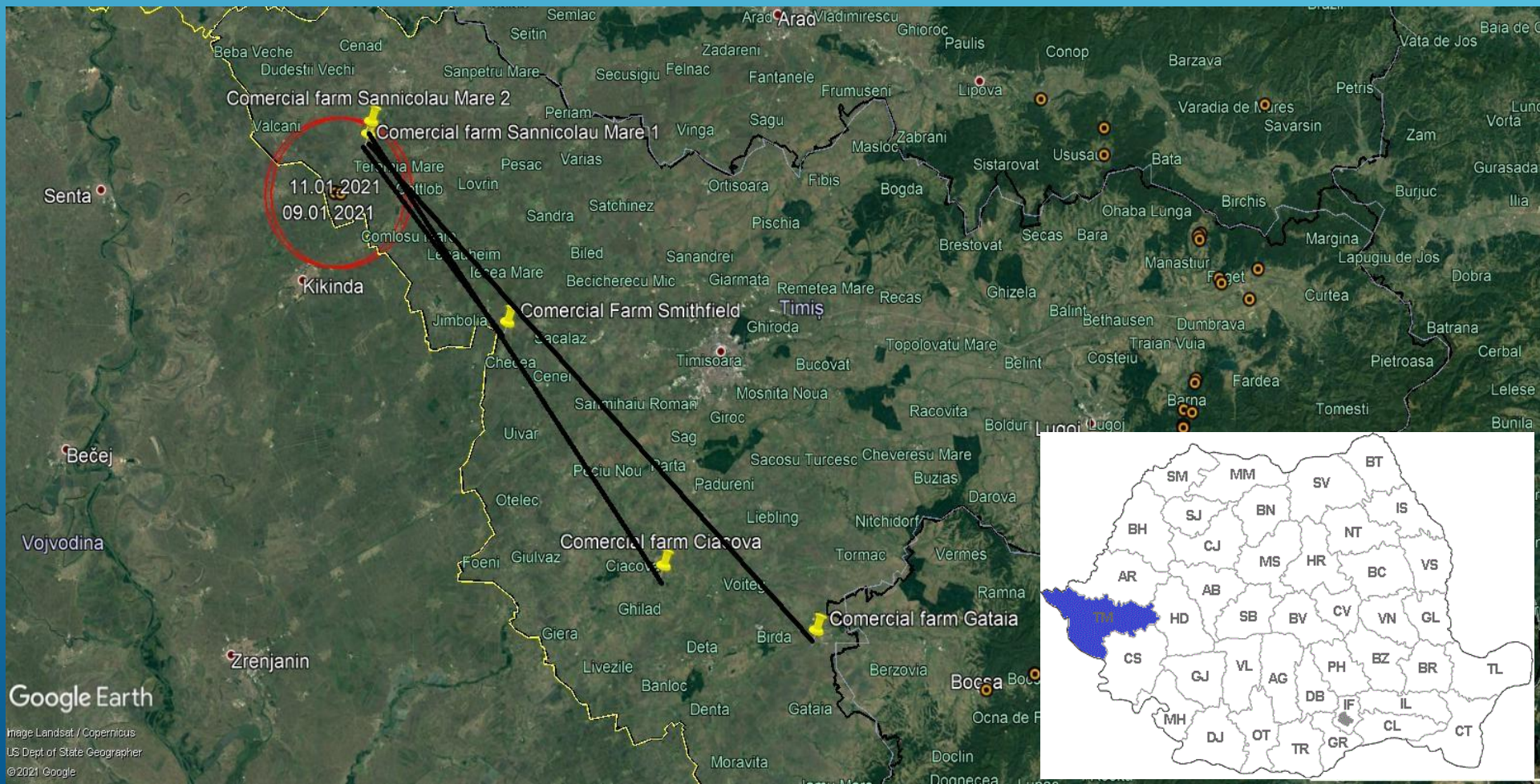
Situation 1. VN county- Breeding farm. Weekly births take place and 1 400 piglets are weaned weekly. Movement restriction imposed since 01.01.2021.

Application arguments:

- at this moment, the minimum welfare norms can no longer be provided,
- the animals show behavioral disorders (otophagous / caudophagy) because the density on the farm is high,
- the pigs are subject of clinical and laboratory examinations to detect a possible presence of ASF virus, the test results being negative,
- the transport of animals will be carried out on established routes, without unloading / stopping and with cleaned and disinfected vehicles.

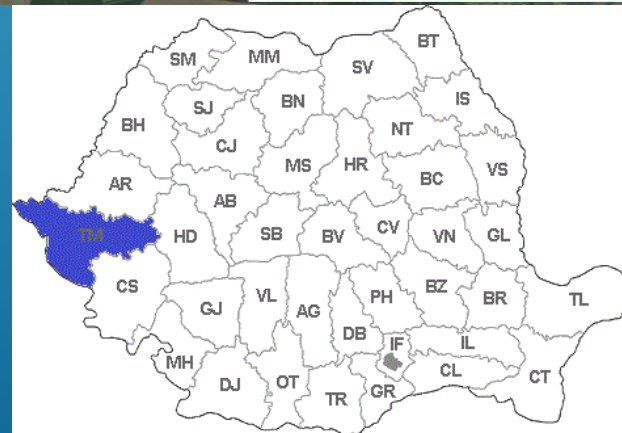
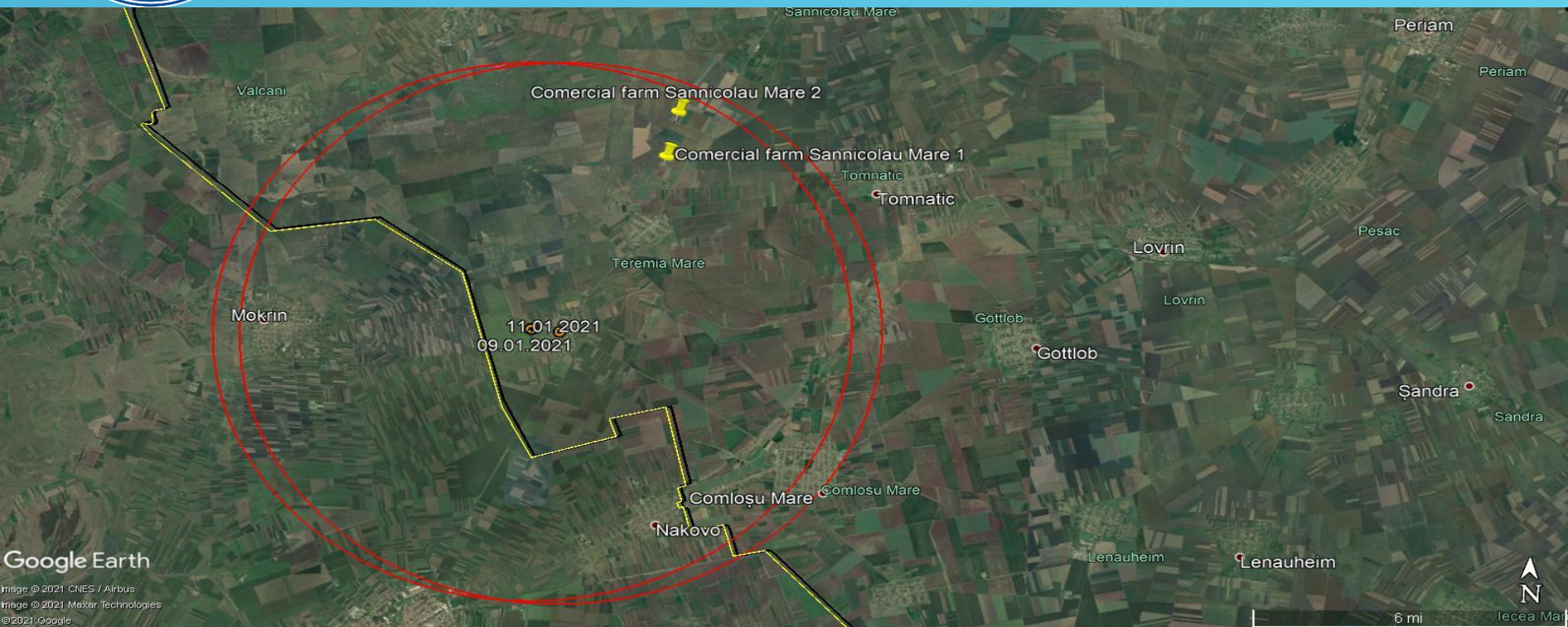


Situation 2 . TM county at the moment the request is analysed.





1. TM COUNTY



Situation 2. TM county –2 Reproduction farms. Movement restriction imposed since 11.01.2021.

We received a request for piglet movements from two farms to other 3 three farms from same holding group, located in free zone.

The updated situation will be presented in the next SCOPAFF.



The National Sanitary Veterinary and Food Safety Authority of Romania



THANK YOU FOR YOUR ATTENTION!
QUESTIONS?

