



“BAMBOO-ZLING”

EU enforcement action
on
plastic Food Contact Materials
made of bamboo “powder”



Directorate General for Health and Food Safety

Unit G4 Food hygiene and fraud - E2 Food processing technologies
and novel foods

Brussels, 06.05.2021

What are the issues ?

An illegal additive in plastic FCM*



Bamboo powder is not authorised as an additive

MIGRATION
above Specific Limits of melamine and formaldehyde

Advertised for infants and young children



Dividing Bamboo powder/ plastics impossible

Not Eco-friendly

Not Recyclable

- Made primarily from bamboo powder
- Sustainably harvested
- Eco-friendly
- Biodegradable
- Durable
- Dishwasher safe (top rack)
- Not suitable for microwave



What are the issues?

RASFF and AAC notifications 2019-2021*

Notifications received related to FCM made of ground bamboo

Non Compliances	2019	2020	2021	TOTAL
Health Risk (RASFF)	35	20	10*	65
No Health Risk (AAC)	9	3	2*	14

* Last update 31 March 2021



What are the issues ?

Circumvention of border control and customs duties

CN - customs classification



CN code 39241000
(Tableware and kitchenware
of plastics)

6,5% Duty

Sanitary checks:
Reg. 10/2011
+ Reg. 284/2011
if origin CN-HK



CN code 44191900
(Tableware and kitchenware, of bamboo, other than bread
boards, chopping boards and similar boards or chopsticks)

0% Duty

NO
Sanitary checks

What are the issues?

Circumvention of border control and customs duties

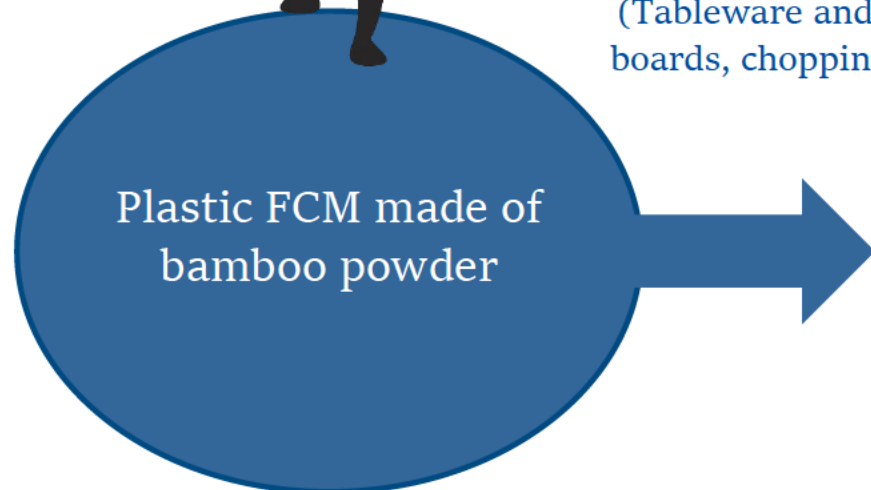
CN - customs classification



CN code 39241000
(Tableware and kitchenware
of plastics)

6,5% Duty

Sanitary checks:
Reg. 10/2011
+ Reg. 284/2011
if origin CN-HK



Plastic FCM made of
bamboo powder



CN code 44191900

(Tableware and kitchenware, of bamboo, other than bread
boards, chopping boards and similar boards or chopsticks)

0% Duty

NO
Sanitary checks

What are the issues ?

Circumvention of border control and customs duty

CN - customs classification



CN code 39241000
(Tableware and kitchenware
of plastics)

6,5% Duty

Sanitary checks:
Reg. 10/2011
+ Reg. 284/2011
if origin CN-HK

Plastic FCM made of
bamboo powder

TAXUD



CN code 441900
(Tableware and kitchenware, of bamboo, other than bread
boards, chopping boards and similar boards or chopsticks)

0% Duty

NO
Sanitary checks

Why an EU action is needed?

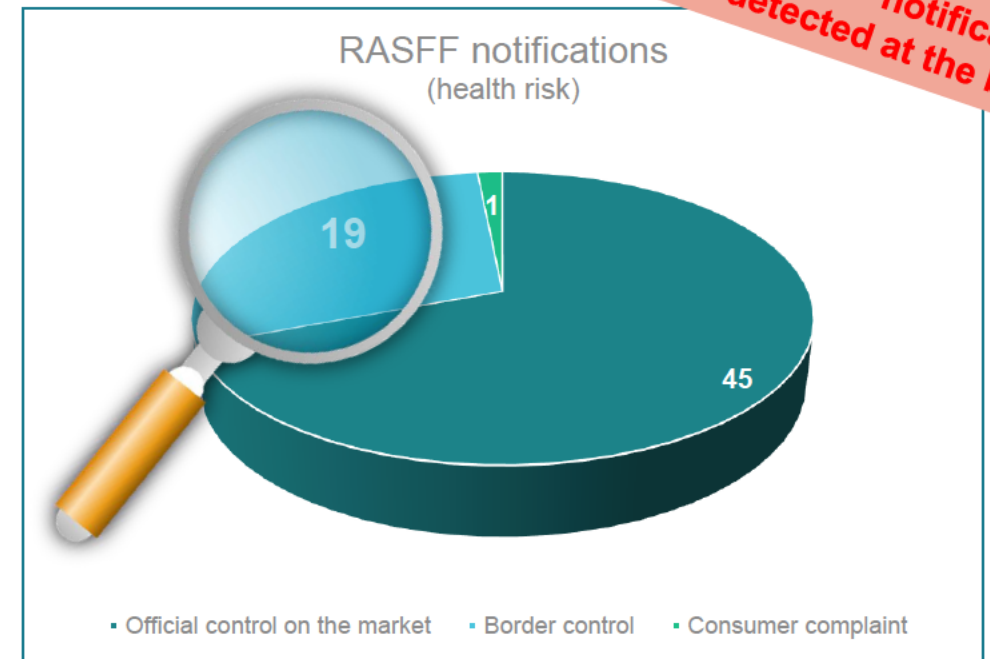
Notifications received related to FCM made of ground bamboo



All the notifications are Extra-EU origin

Non compliances	Origin	CN/HK	Other non EU	EU	TOTAL
Health Risk (RASFF)		47	18	0	65
No Health Risk (AAC)		6	8	0	14

Only the 29,2% of the RASFF notifications are related to product detected at the border



Success highly relies on

- Number of countries participating
- Cooperation between sanitary and customs services

OBJECTIVES



On the EU market:

- Identification and removal from the market
- Reminder to producers/importers/distributors on illegal products
- Support from eCommerce platforms
- Information to Consumers



EU borders:

- Detection and rejection at EU borders
- Recovery of evaded duties



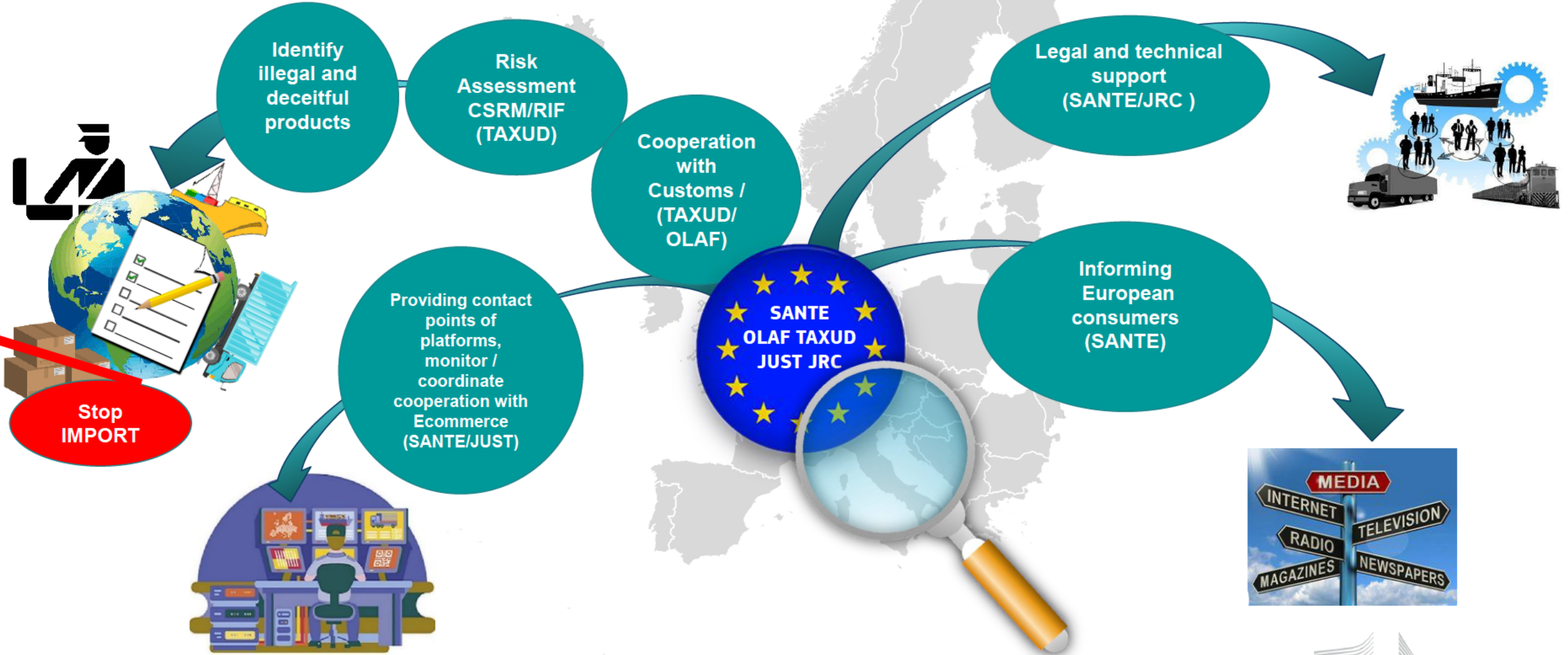
Who will do what?

Enforcement at Member States level



Who will do what?

European Commission



Timeline



- Launch event with Member States competent authorities
- Start of the Coordinated Action with customs and competent authorities in the MS
- Reporting / Communication by MS and European Commission
- End of the Action

6 May 2021

May 2021

May - December 2021

December 2021



SANTE-BAMBOO-ENFORCEMENT-ACTION@ec.europa.eu



https://ec.europa.eu/food/safety/food-fraud/coord-act_en