



Ministero della Salute



ISTITUTO G. CAPORALE
TERAMO



CRN Brucellosi

Centro di Riferenza Nazionale

Bovine Brucellosis in Italy

[SCoFAH meeting 11-12 September, 2014,
Brussels](#)



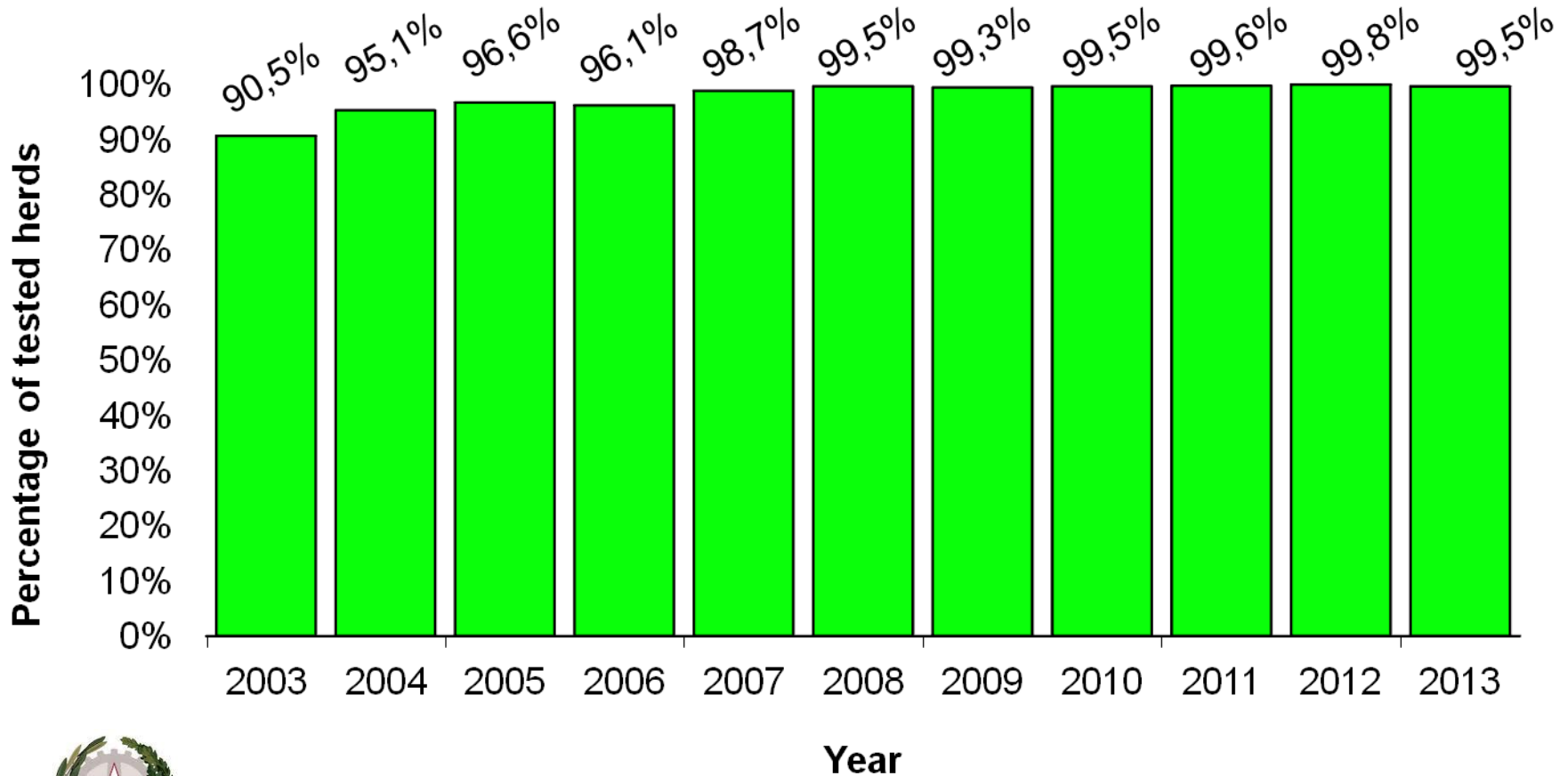
BOVINE Brucellosis – Officially-free provinces 2013



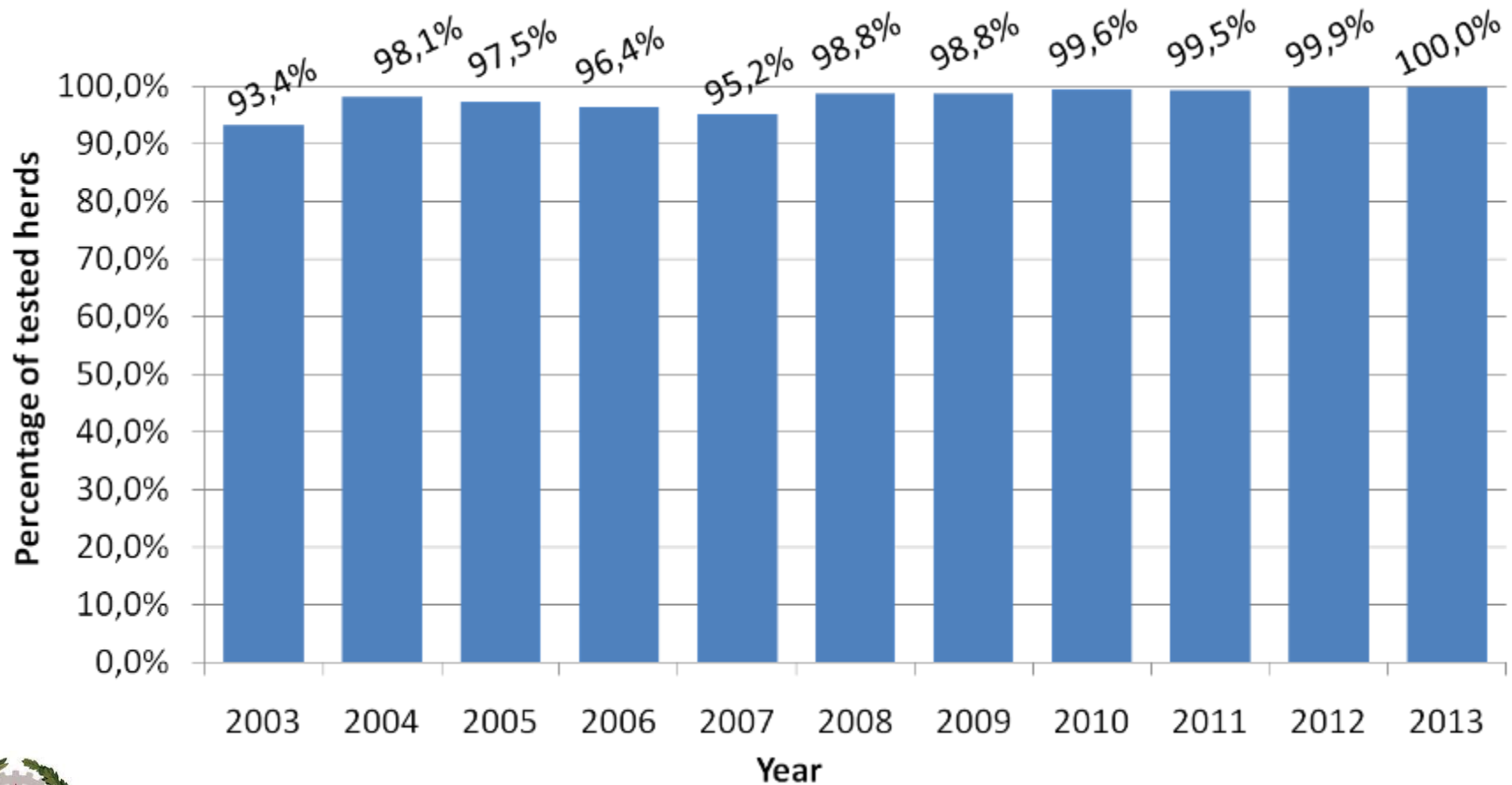
Italian Regions	Italian BB-OBF Territories
Emilia-Romagna	whole Region
Lombardia	whole Region
Marche	whole Region
Sardegna	whole Region
Toscana	whole Region
Trentino Alto Adige	whole Region
Umbria	whole Region
Piemonte	whole Region
Friuli Venezia Giulia	whole Region
Liguria	Imperia, Savona*
Veneto	whole Region
Lazio	Frosinone, Latina, Rieti, Viterbo
Abruzzo	Pescara
Molise	Campobasso
Puglia	Brindisi
Valle d'Aosta	whole Region
TOTAL	72 Provinces

[*Whole Region \(Decision 2014/91/EU of 14/02/14\)](#)

Bovine Brucellosis – Tested Herds

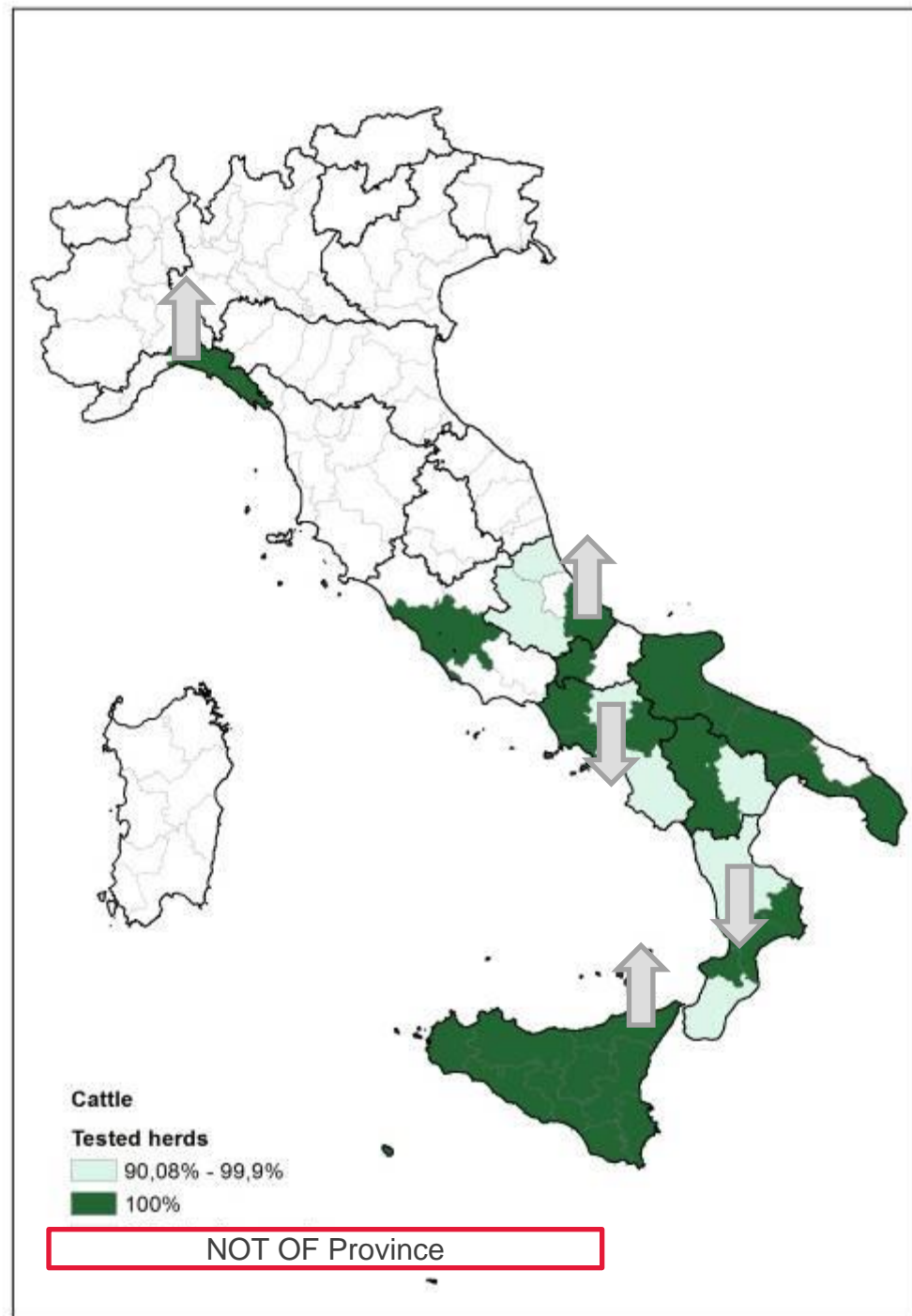


Buffalo Brucellosis – Tested Herds

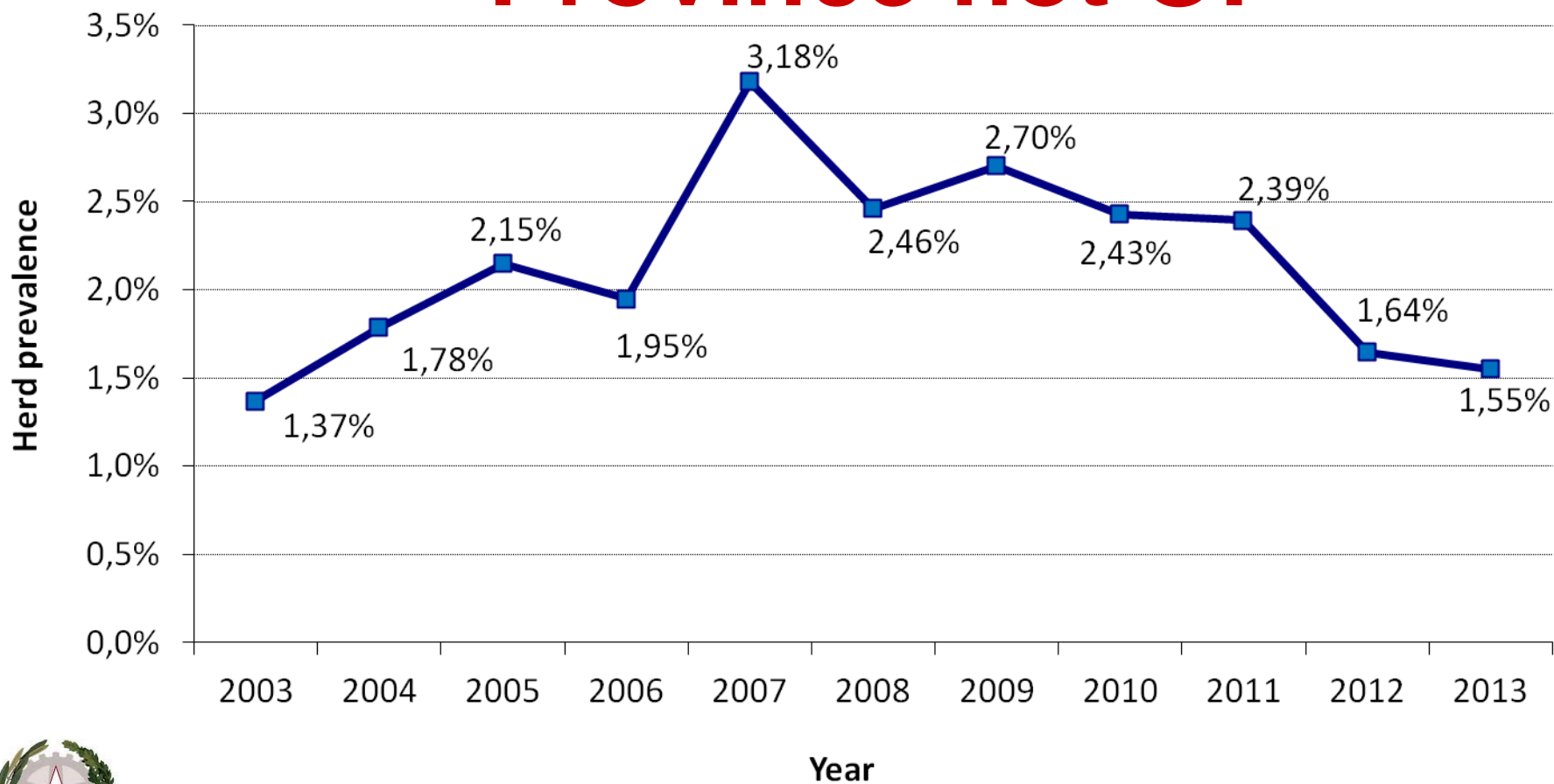


Bovine Brucellosis - Percentage of Tested Herds

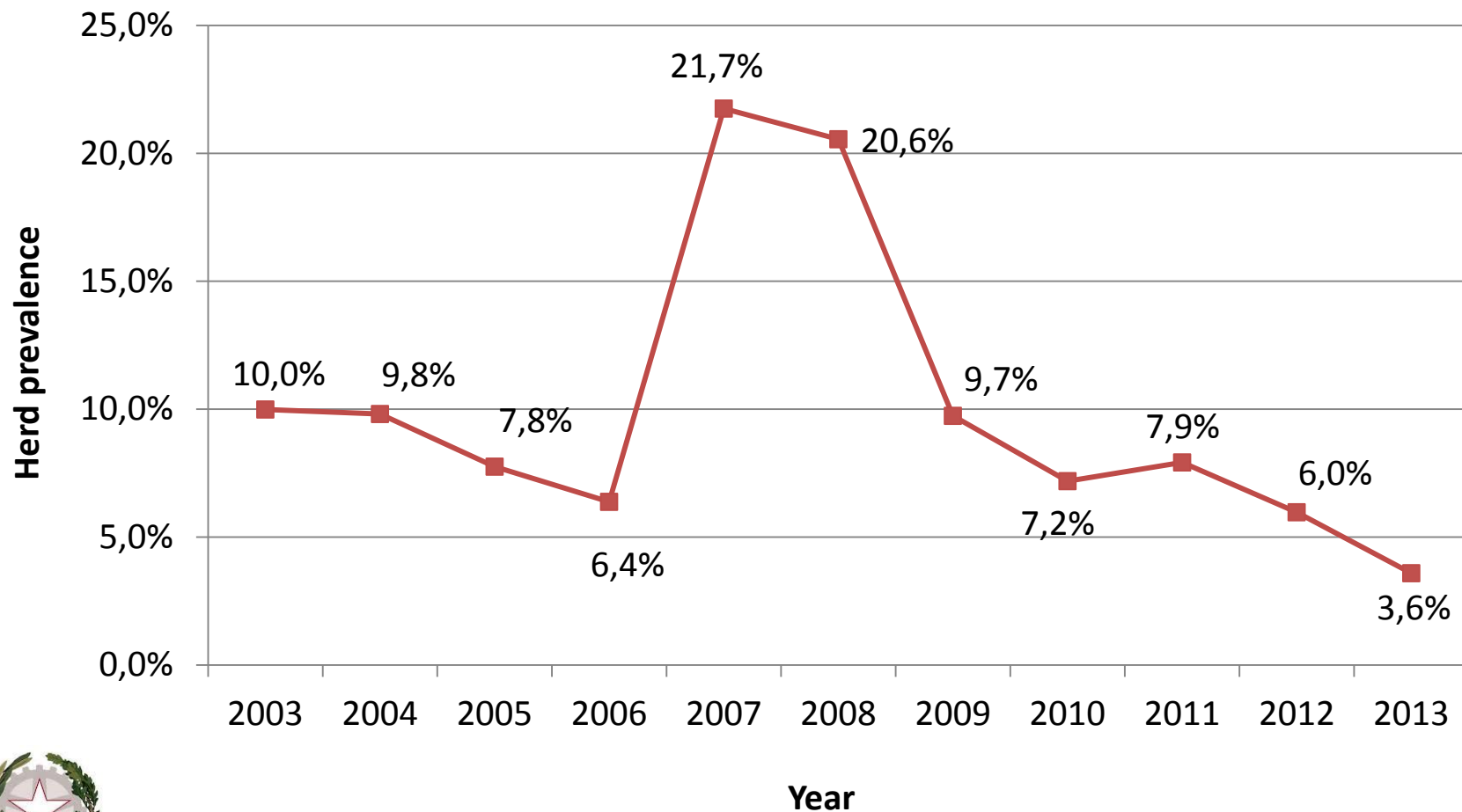
Year 2013



Bovine Brucellosis – Positive Herds in the Province not OF



Buffalo Brucellosis – Positive Herds



Bovine Brucellosis

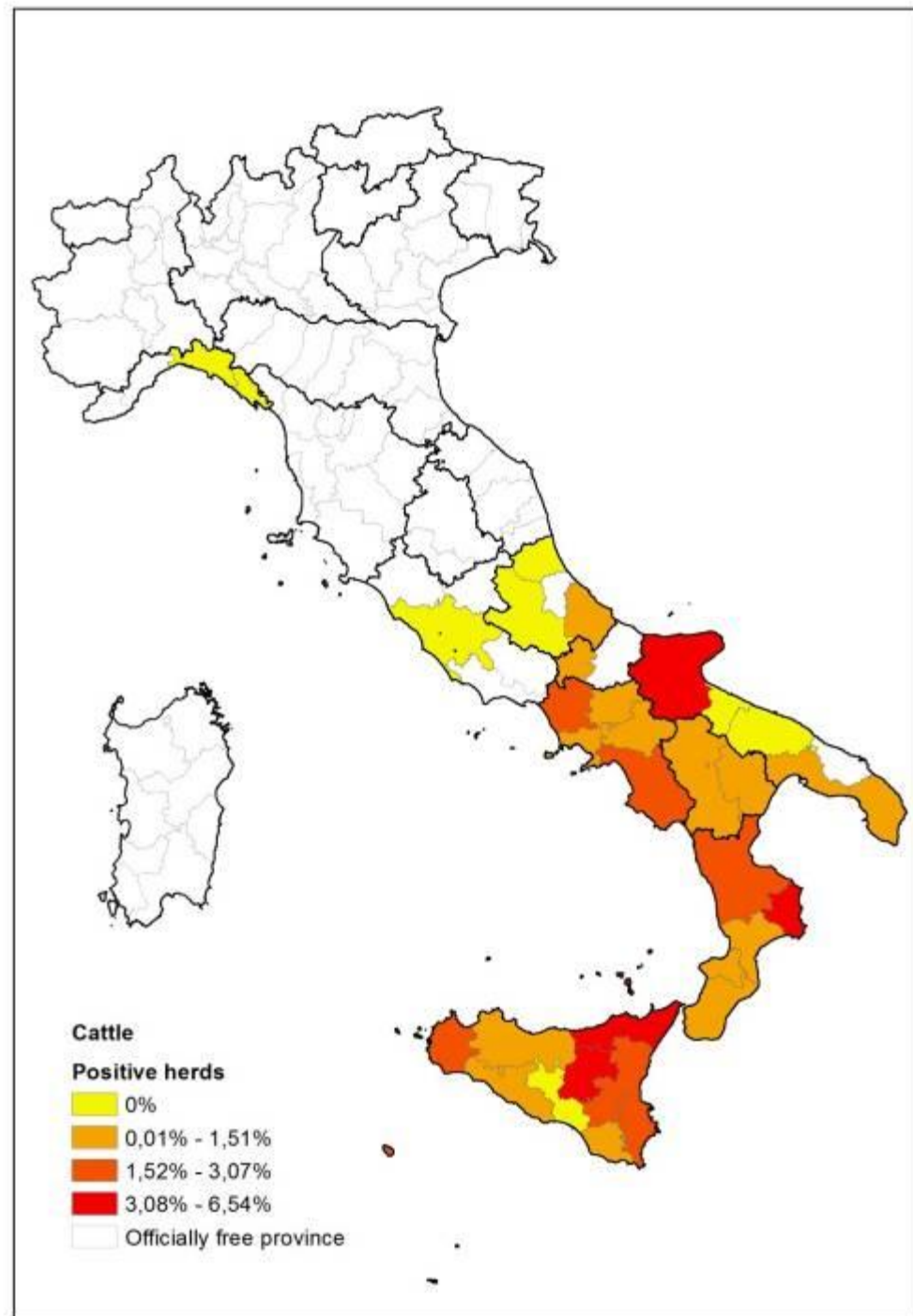
-

Percentage of Positive Herds

Year 2013



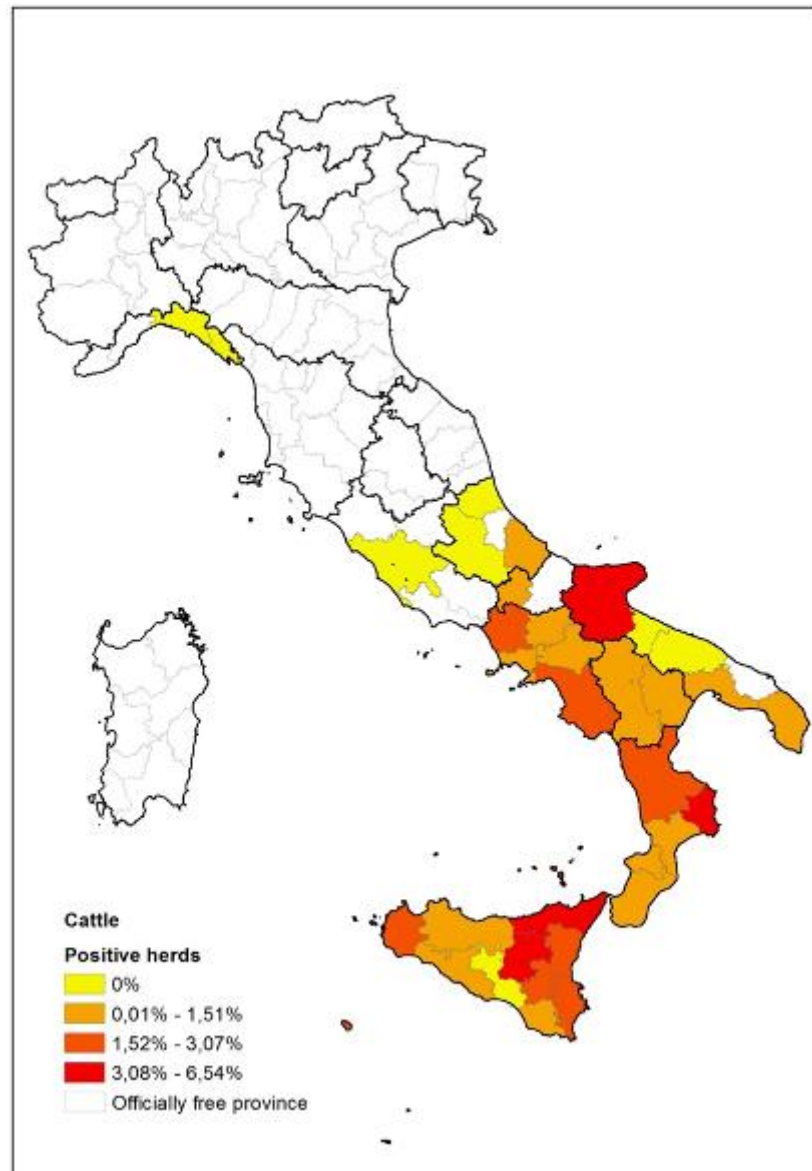
Ministero della Salute



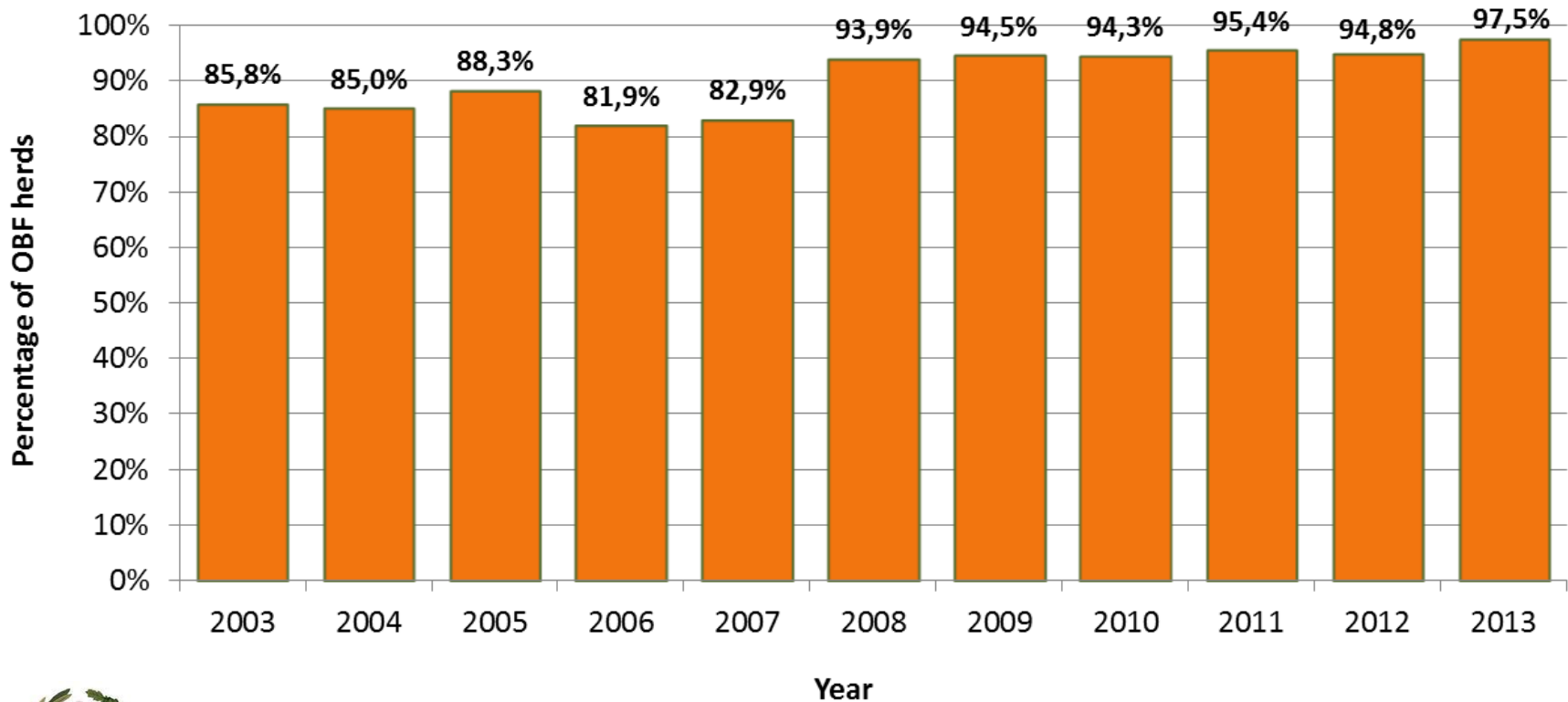
REGIONS NON OF PREVALENCE 2013

• REGIONS PREVALENCE	%
• ABRUZZO	0,04 %
• BASILICATA	1,33 %
• CALABRIA	1,60 %
• CAMPANIA	0,96 %
• LAZIO	0,00 %
• LIGURIA	0,00 %
• MOLISE	0,18 %
• PUGLIA	2,01 %
• SICILIA	2,62 %

BOVINE BRUCELLOSIS



Bovine Brucellosis - Percentage of OBF herds





ISTITUTO G. CAPORALE
TERAMO



Ministero della Salute



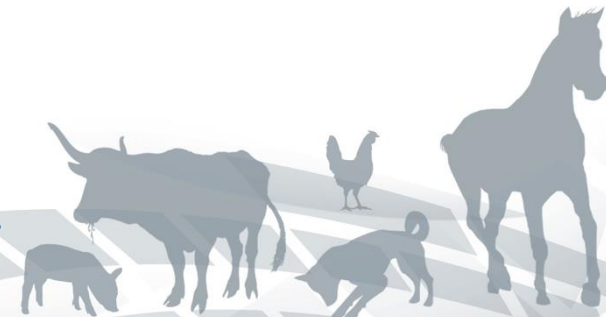
CRN Brucellosi

Centro di Riferenza Nazionale

Sheep and Goats Brucellosis in Italy



SCoFAH meeting 11-12 September, 2014,
Brussels

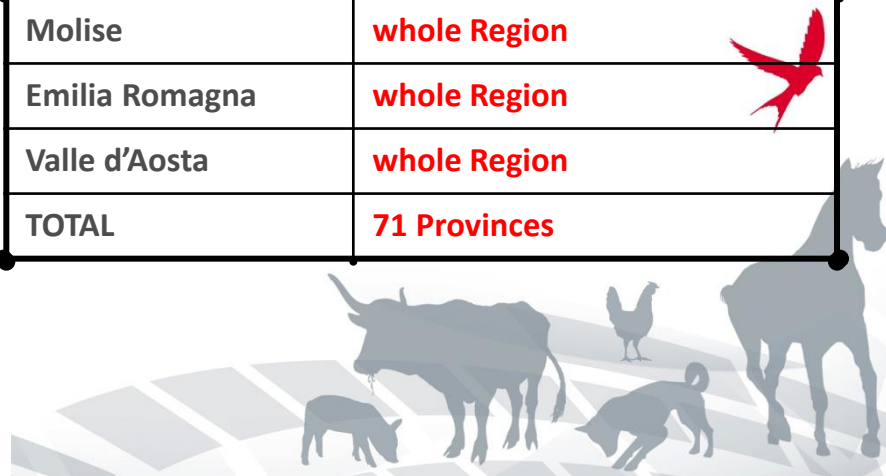


S&G Brucellosis – Officially-free provinces 2013

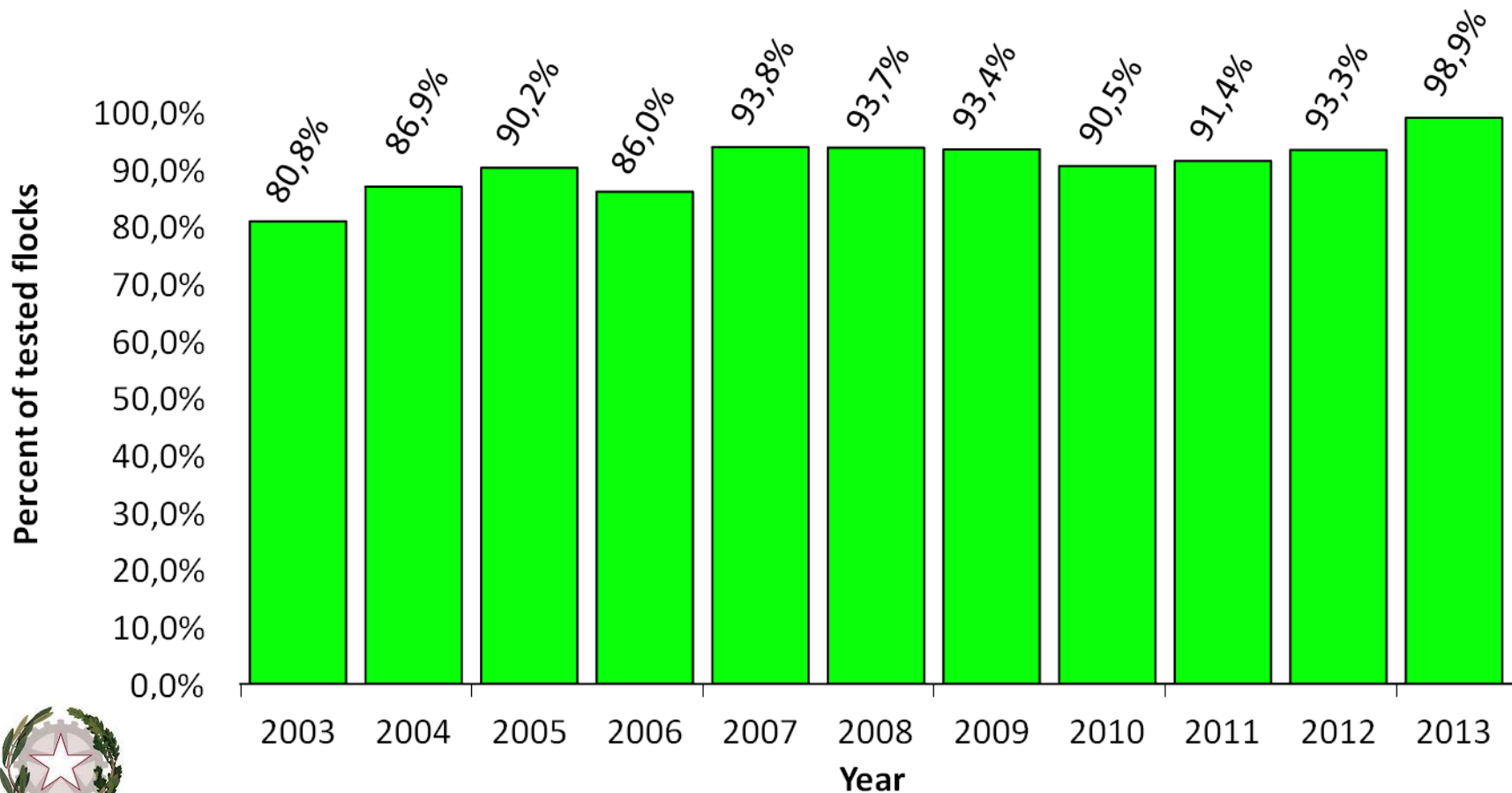


Ovi-caprini
 Province U.I.

Italian Regions	Italian S&GB-OBF Territories
Lombardia	whole Region
Marche	whole Region
Sardegna	whole Region
Toscana	whole Region
Trentino Alto Adige	whole Region
Umbria	whole Region
Piemonte	whole Region
Friuli Venezia Giulia	whole Region
Liguria	Savona
Veneto	whole Region
Lazio	Latina, Rieti, Roma, Viterbo
Abruzzo	Pescara
Molise	whole Region
Emilia Romagna	whole Region
Valle d'Aosta	whole Region
TOTAL	71 Provinces



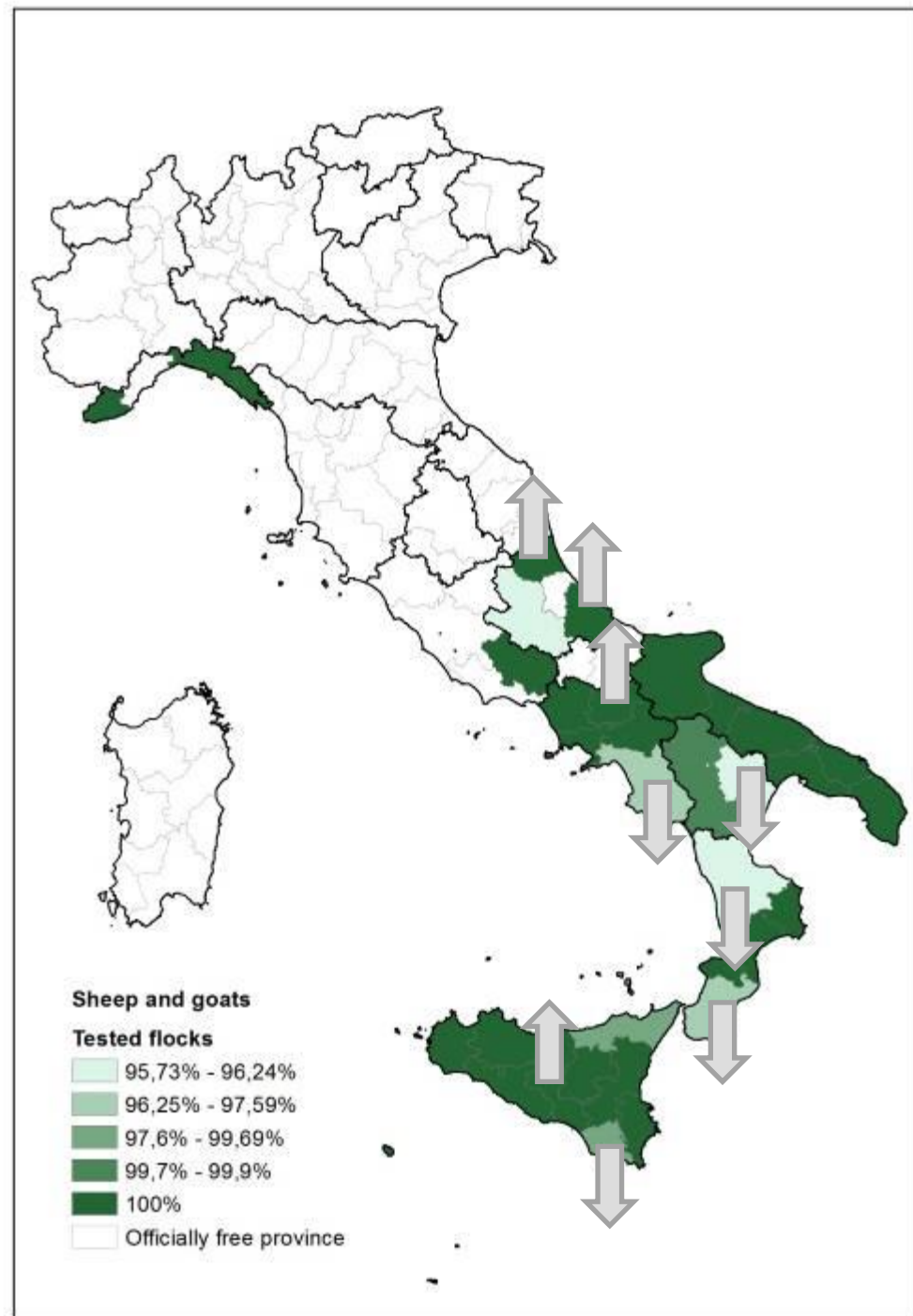
Sheep & Goats Brucellosis – Tested Flocks



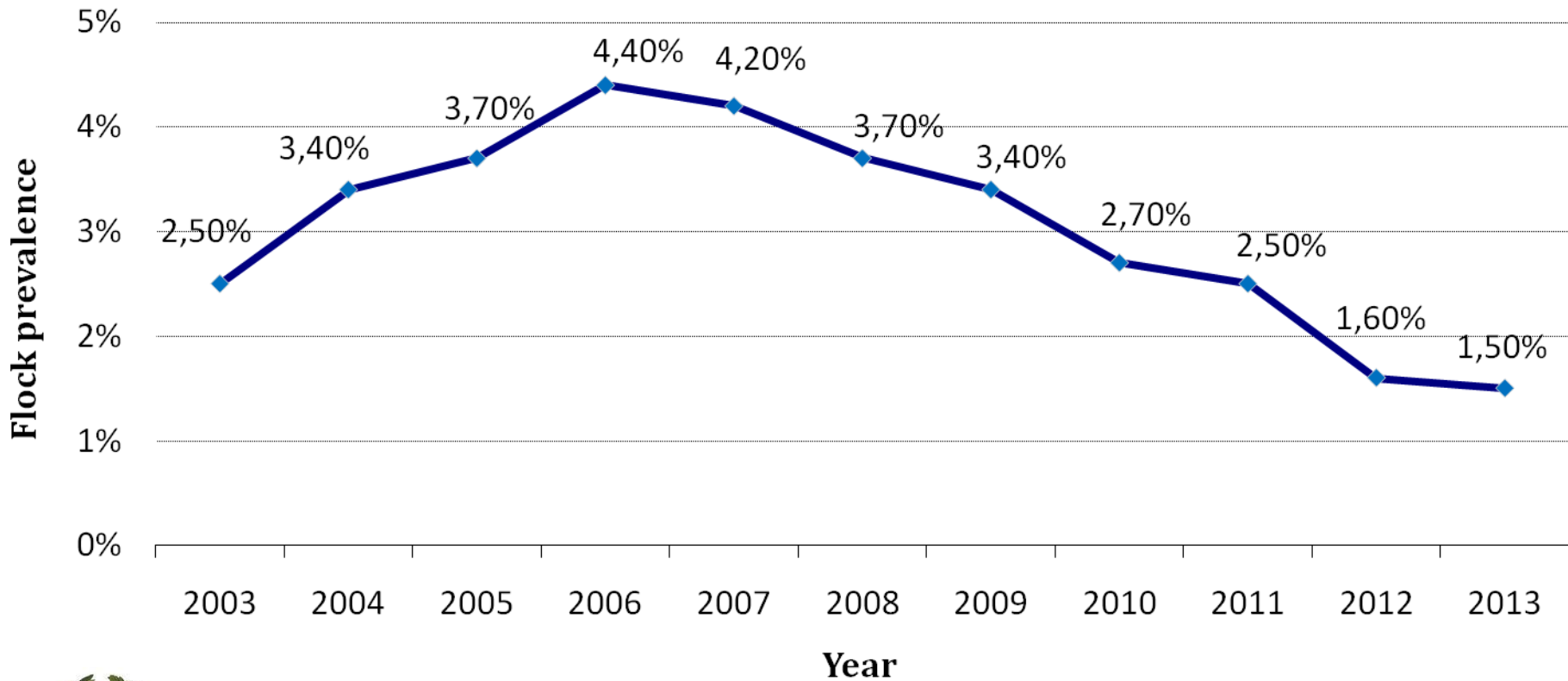
Sheep & Goats Brucellosis

Percentage of Tested Flocks

Year 2013

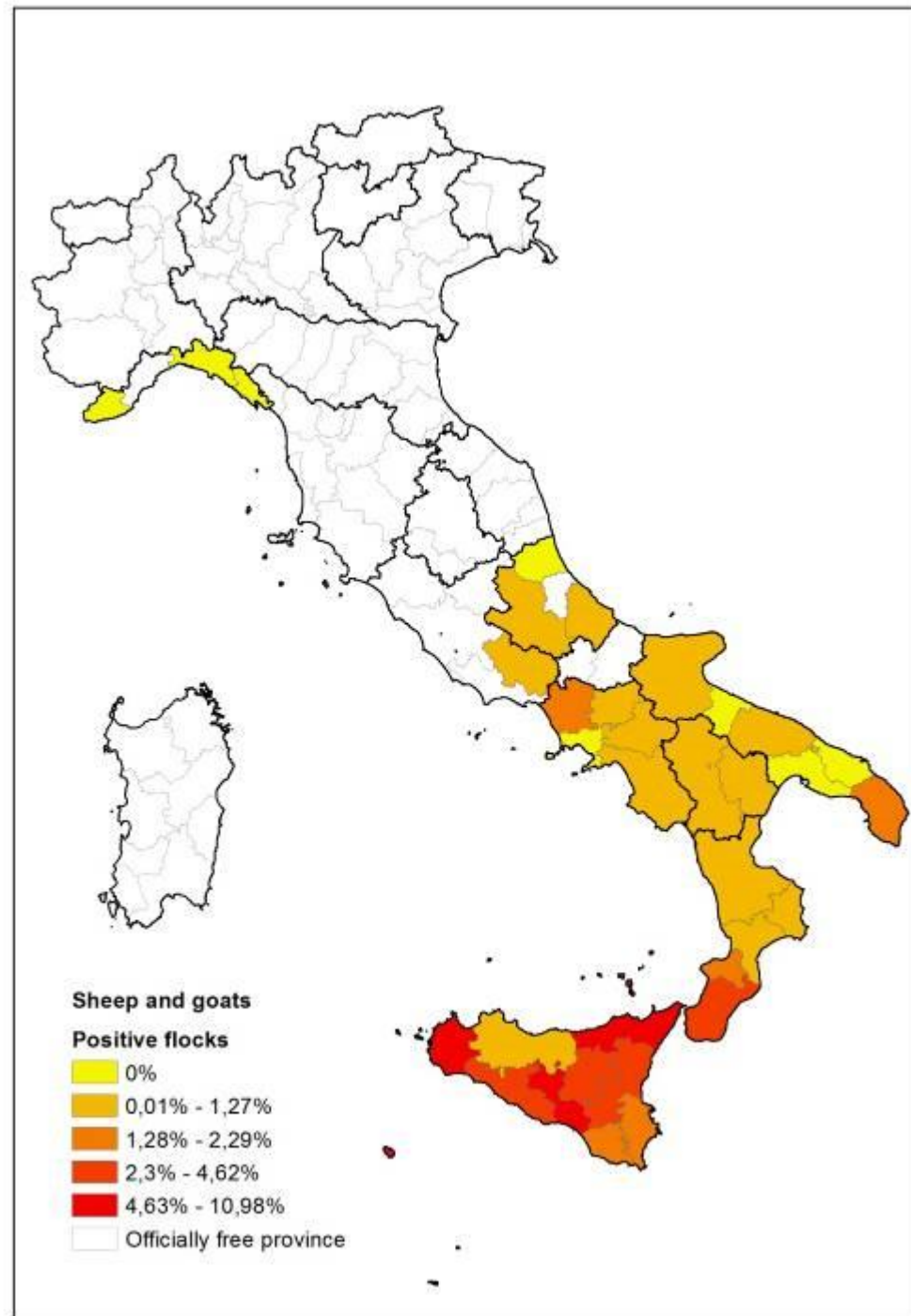


Sheep & Goats Brucellosis – Positive Flocks in the Province not OF



Sheep & Goats Brucellosis

- Percentage of Positive Flocks Year 2013





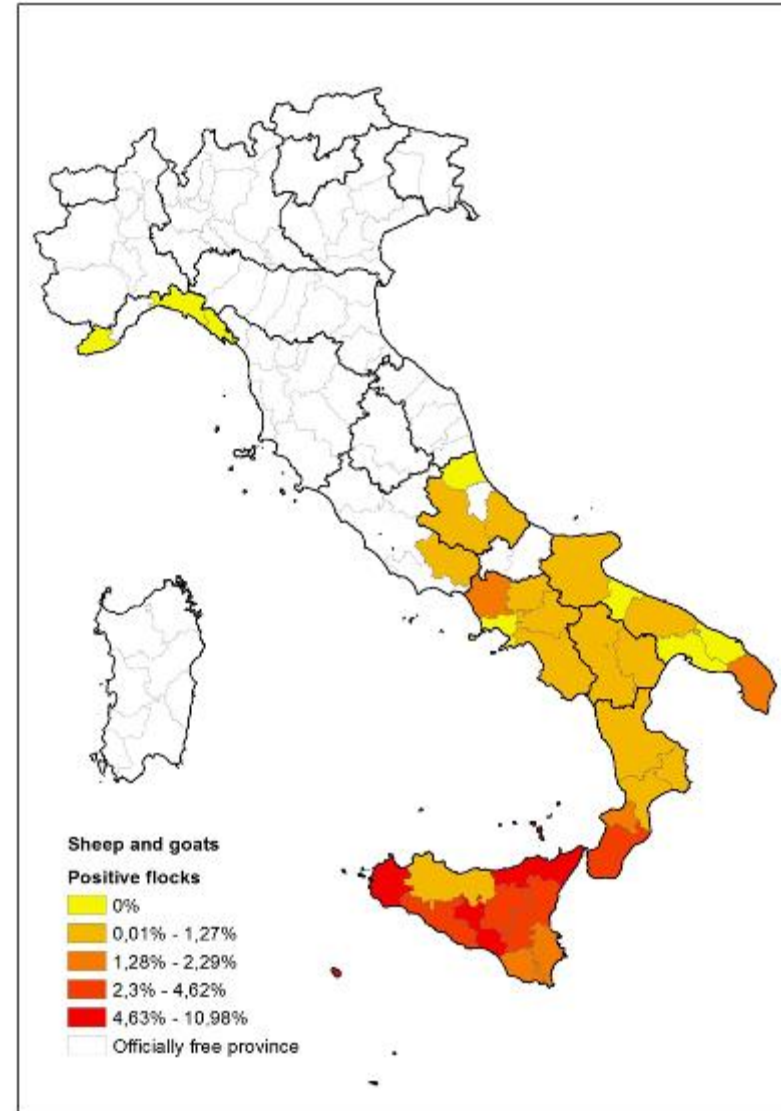
ISTITUTO G. CAPORALE
TERAMO

REGIONS NON OF PREVALENCE 2013

 **CRN Brucellosi**
Centro di Riferenza Nazionale

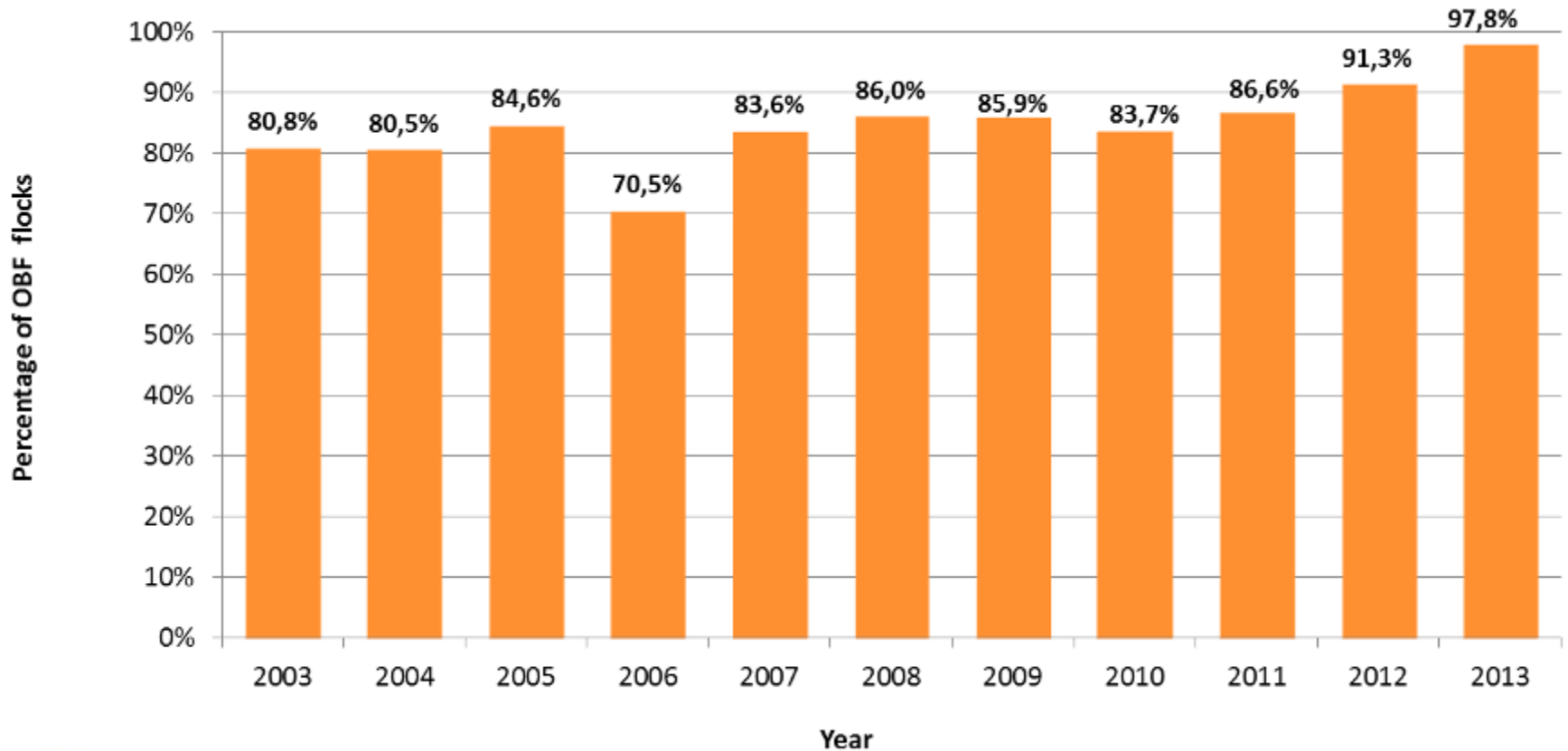
• REGIONS	% PREVALENCE
• ABRUZZO	0,06 %
• BASILICATA	0,08 %
• CALABRIA	1,18 %
• CAMPANIA	0,80 %
• LAZIO	0,13 %
• LIGURIA	0,00 %
• PUGLIA	0,73 %
• SICILIA	4,70 %

OVI-CAPRINE BRUCELLOSIS





S&G Brucellosis - Percentage of OBF flocks



Focus on Sicily: cattle, sheep and goats



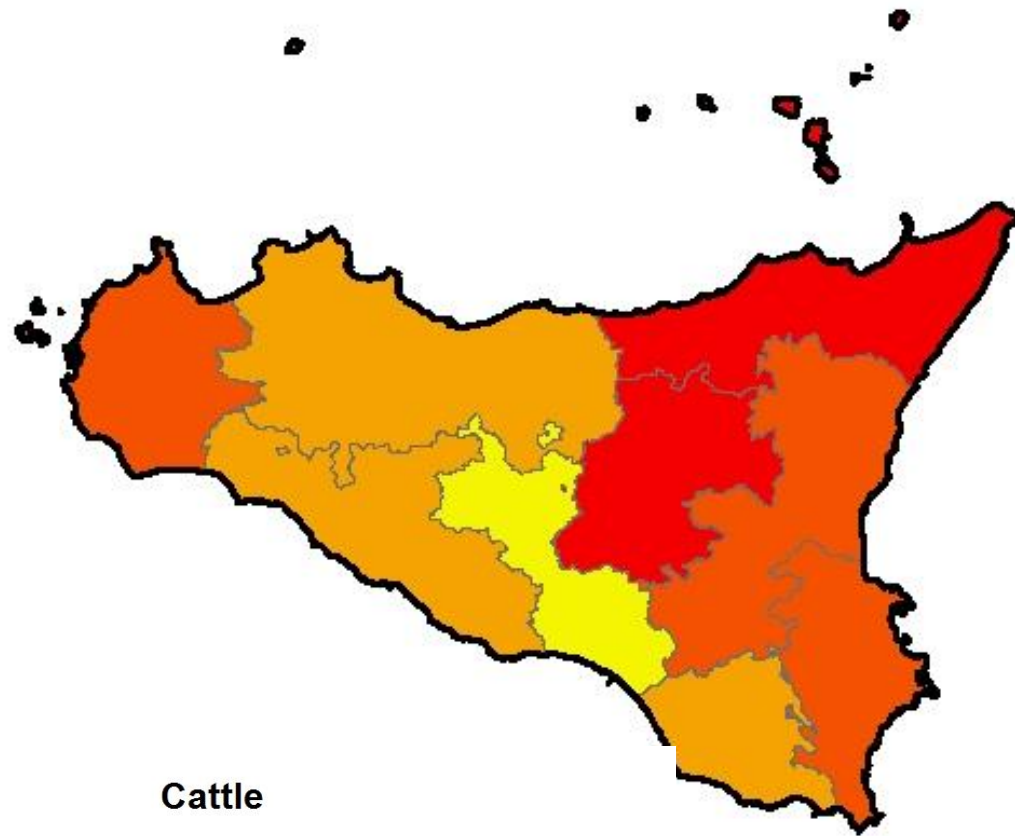


ISTITUTO G. CAPOREALE
TERAMO

Bovine Brucellosis Positive Herds - Year 2013

CRN Brucellosi

PROVINCE	POSITIVE HERDS
AGRIGENTO	0,83%
CALTANISSETTA	0,00%
CATANIA	3,07%(4,43%)
ENNA	4,74%
MESSINA	5,64%(6,27%)
PALERMO	0,94%
RAGUSA	0,86%
SIRACUSA	1,74%
TRAPANI	2,38%



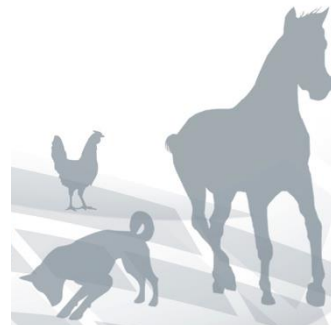
Cattle

Positive herds

- 0%
- 0,01% - 1,51%
- 1,52% - 3,07%
- 3,08% - 5,64%
- Officially free province



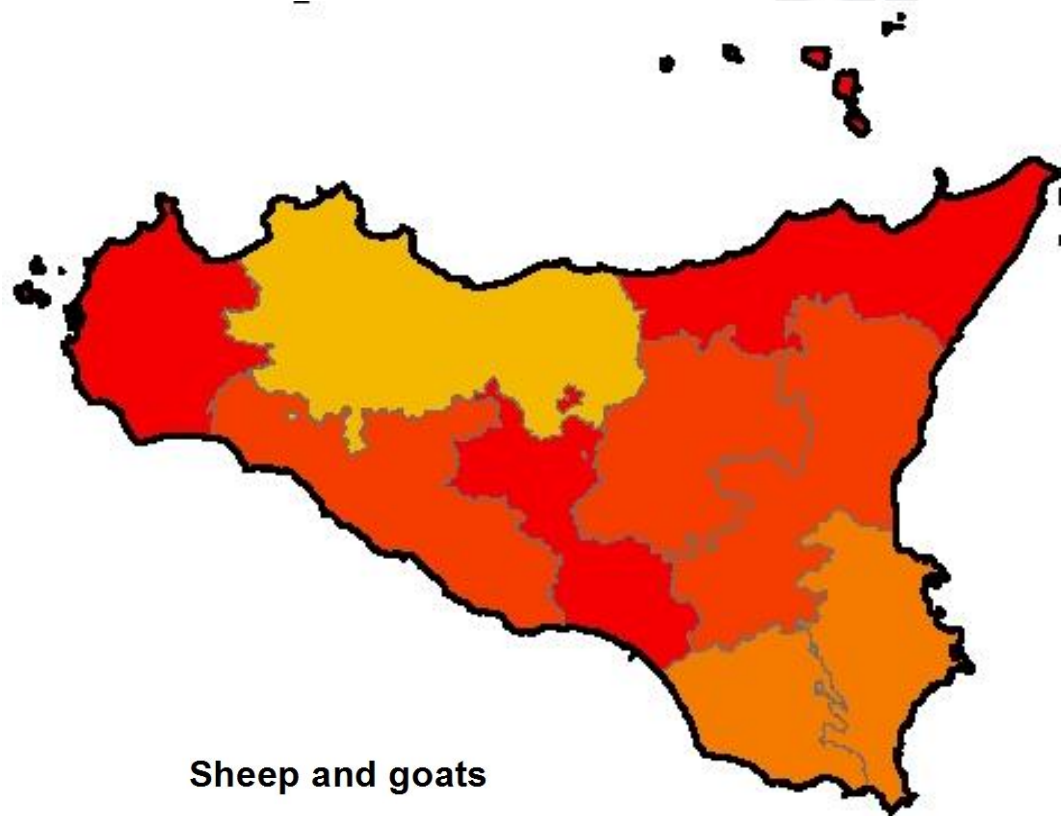
Ministero della Salute



Sheep & Goats Brucellosis Positive Flocks- Year 2013

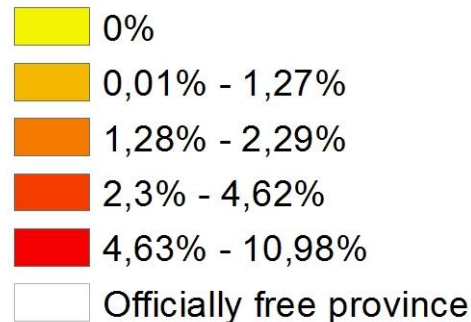
CRN Brucellosi

PROVINCE	POSITIVE HERDS
AGRIGENTO	4,62%
CALTANISSETTA	9,52%(10,11%)
CATANIA	3,22%
ENNA	4,23%
MESSINA	8,26%(10,91%)
PALERMO	1,27%
RAGUSA	1,64%
SIRACUSA	2,20%
TRAPANI	10,98%(13,04%)



Sheep and goats

Positive herds

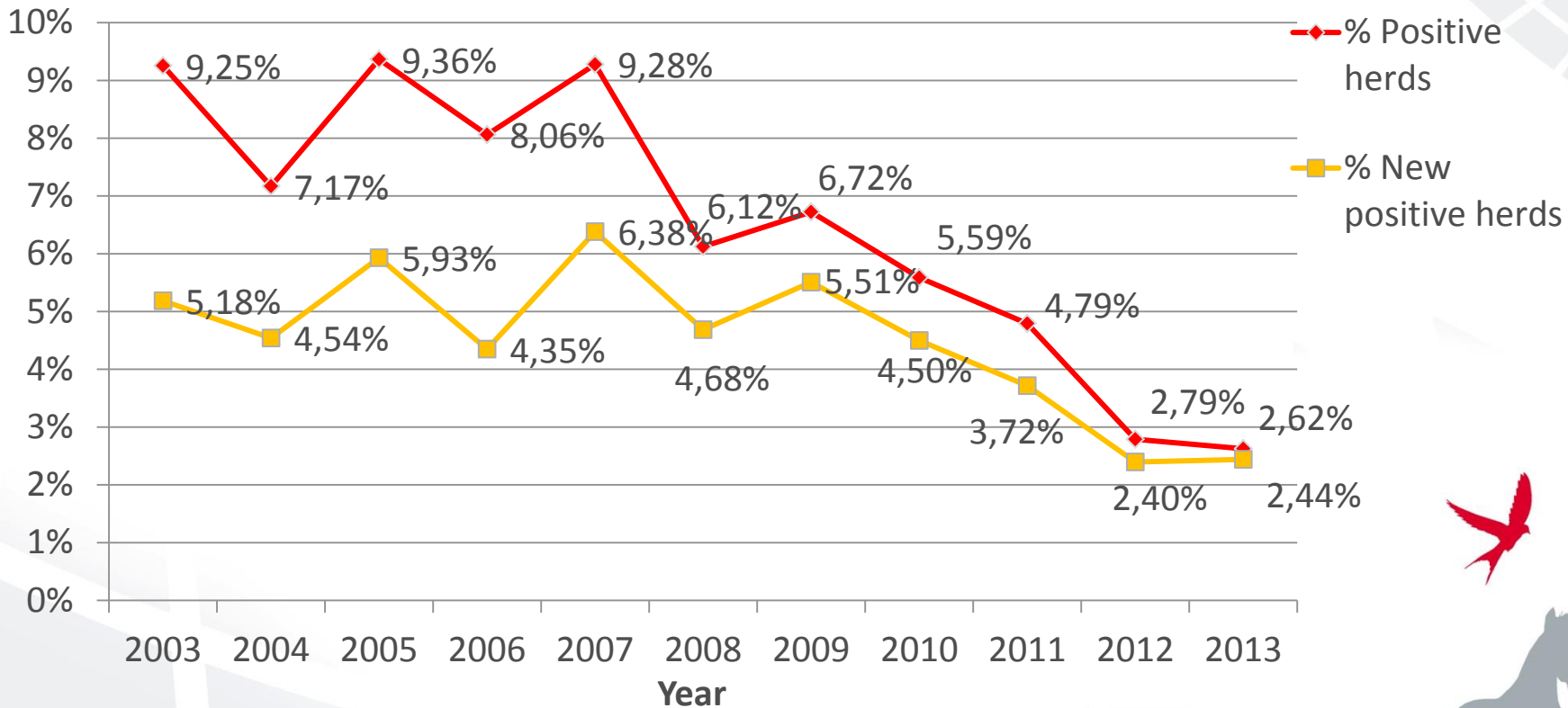


Ministero della Salute



Sicily, Bovine Brucellosis Positive Herds 2003-2013

Percentage of positive herds

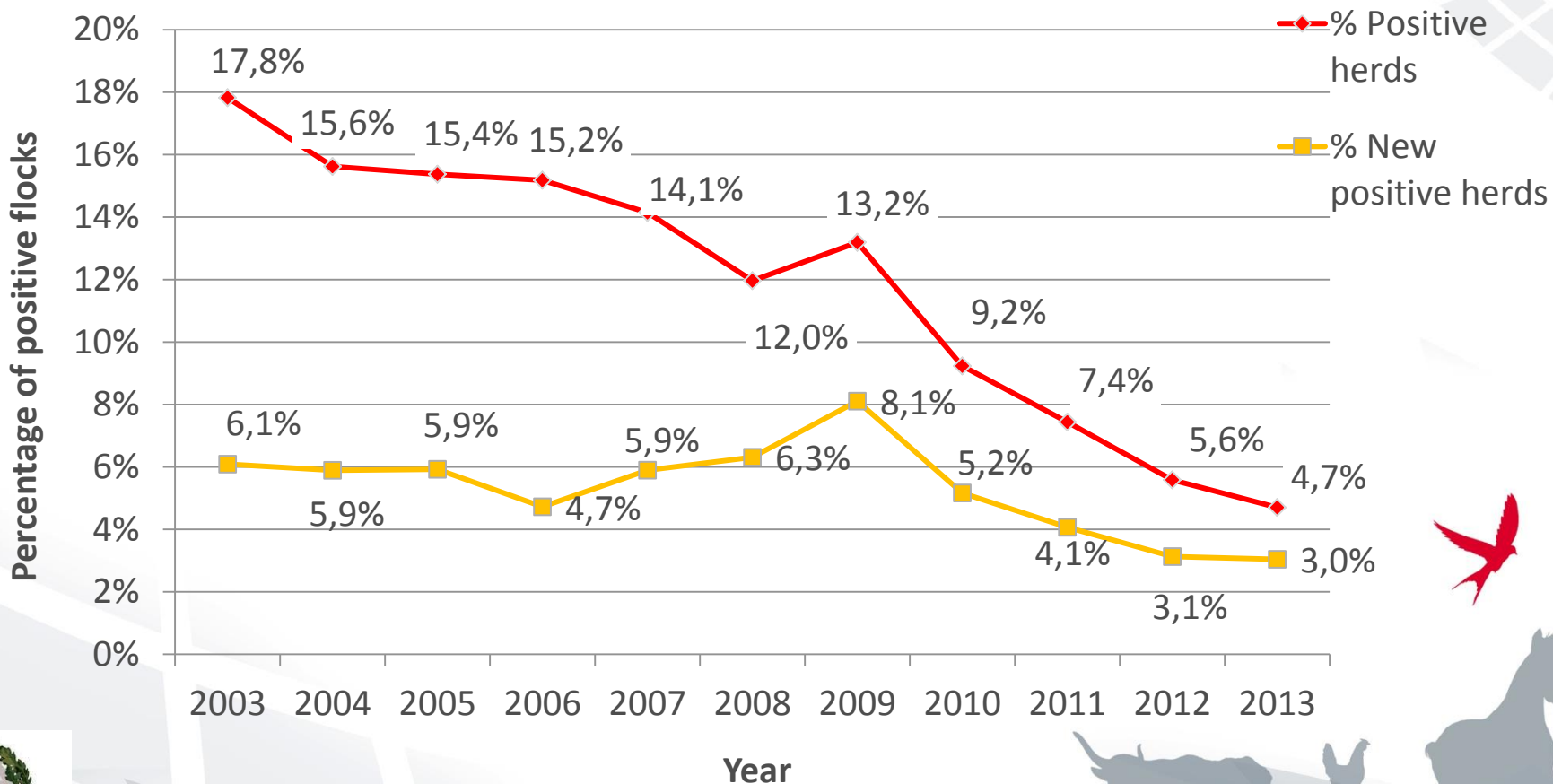




ISTITUTO G. CAPORALE
TERAMO

CRN Brucellosi
Centro di Riferenza Nazionale

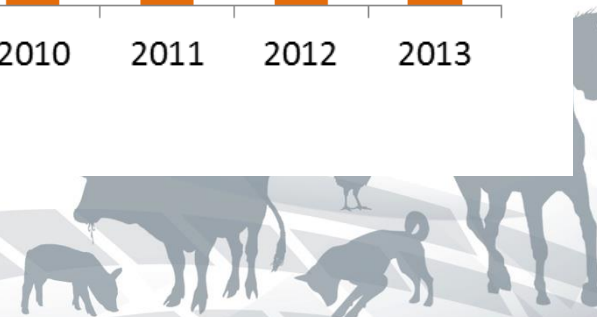
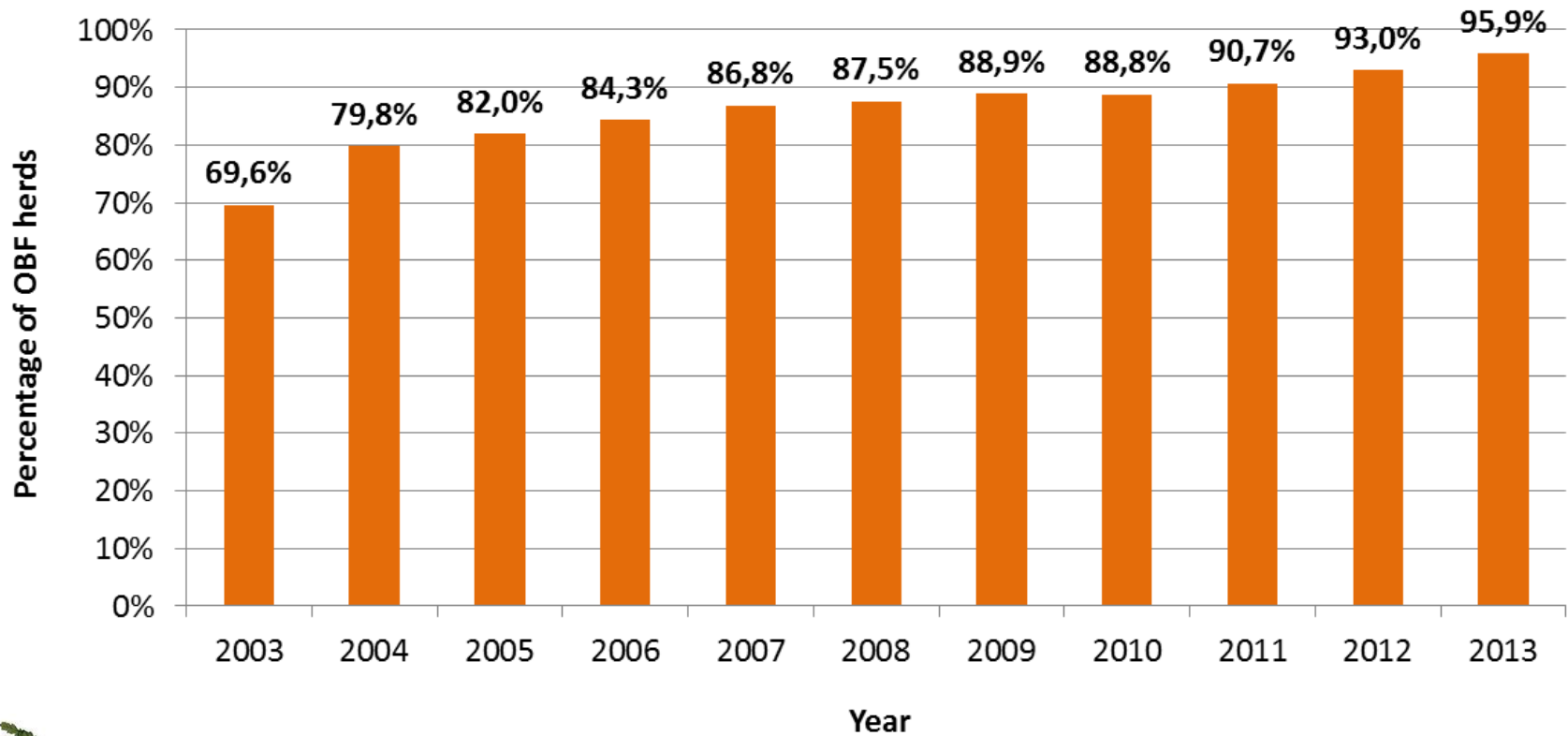
Sicily, Sheep & Goats Brucellosis Positive Flocks 2003-2013



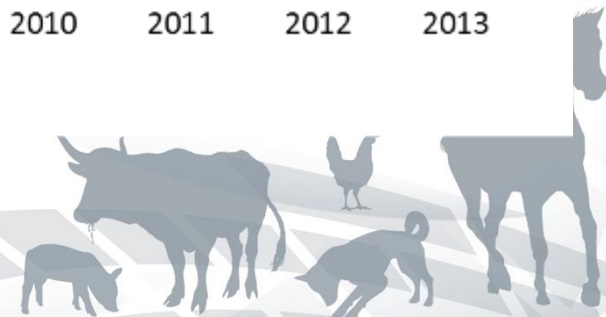
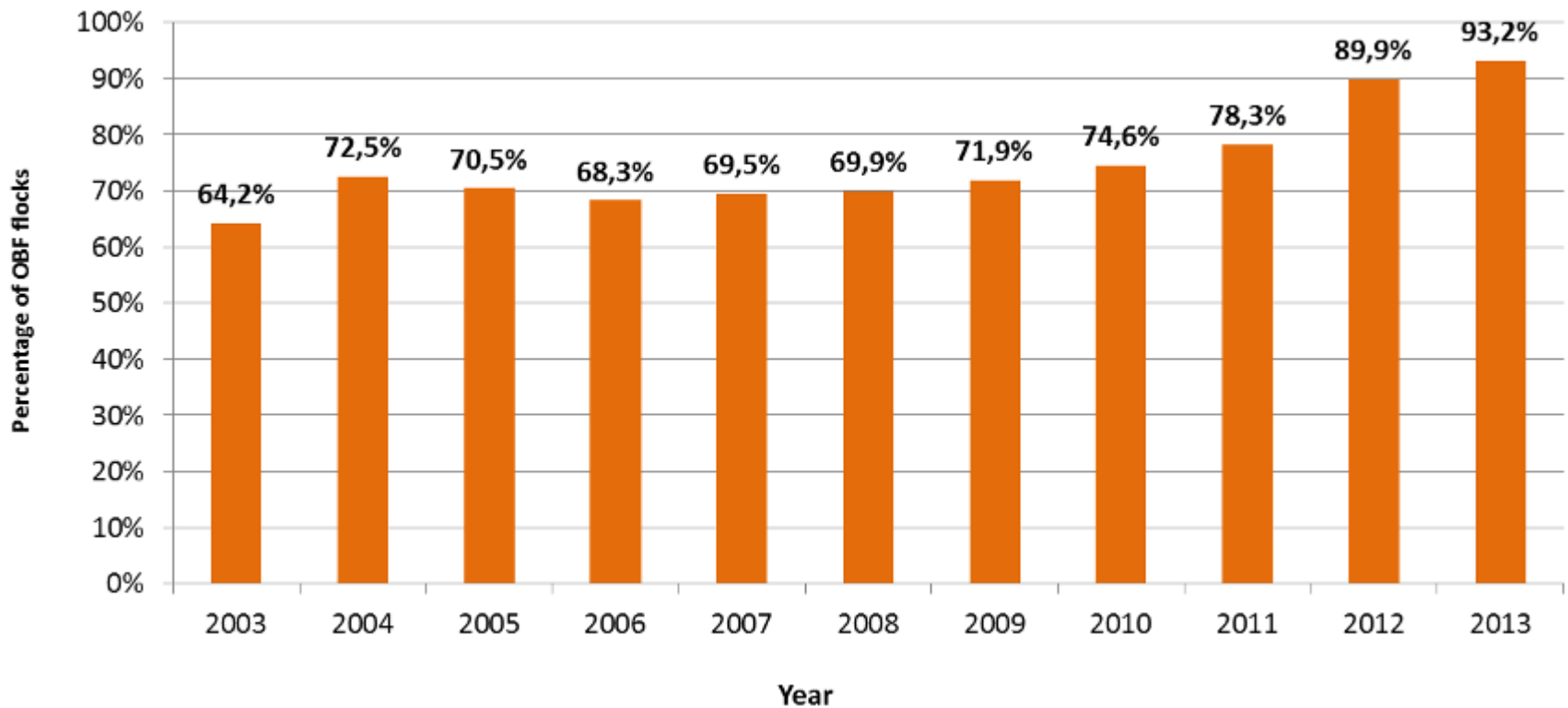
Ministero della Salute



Bovine Brucellosis - Percentage of OBF herds Sicily



S&G Brucellosis - Percentage of OBF flocks Sicily





ISTITUTO G. CAPORALE
TERAMO



Ministero della Salute



CRN Brucellosi

Centro di Riferenza Nazionale

IN CONCLUSIONS

[SCoFAH meeting May 6, 2014, Brussels](#)





ISTITUTO G. CAPORALE
TERAMO



Ministero della Salute

 **CRN Brucellosi**
Centro di Referenza Nazionale

Overall picture

NATIONAL LEVEL

- is registered a stationary situation in the number of controlled bovine herds, an increase of the controlled ovi-caprine flock, and 100% of the controlled buffalo herds.
- The prevalence decrease in bovine, buffalo and ovi-caprine holdings.
- An increase of the OF free holdings in bovine, buffalo and ovi-caprine.

REGIONAL LEVEL

- Liguria presented in the 2013 the request for the status of OF and with the decision the 14 february 2014 are OF for brucellosis Bovine and ovi-caprine.
- Lazio presented in the 2013 the request for the status of OF and with the Commission Decision of the 14 february 2014 are OF for brucellosis ovi-caprine.
- Still continue the decrease of herd prevalence in Sicilia, and in the province of Messina is registered an improving of the situation but is necessary to progress more.





Actions at a National level (Ministry of Health)

Centro di Riferenza Nazionale

The Ministry of Health , given the persistence of the disease in some regions of Italy , including Sicily , renewed in August 2012, the order of 14-11-2006 " Extraordinary Measures of animal health in the field of tuberculosis , bovine brucellosis and buffalo , sheep and goats brucellosis , leucosis in Calabria, Campania, Puglia and Sicily , "which provides additional control measures for the diseases.

- This will see a further renewal in August 2014; with the occasion we would like to make some integration of the rule, based on experience gained over the years of application, to give an answer to both directions originated from the territory and from the FVO recommendations arising by the Audit in October 2013, which focused specifically the problems of the bovine and ovine and caprine brucellosis.
- The renewal is ready and will include not only the ' southern regions Calabria, Campania, Puglia and Sicilia, but all territories not UI, with guideline for stamping out, and sanitary management for fattening herds, and it will give also especially indication at the territories Officially free for the epidemiologic management of the outbreaks and indication for correct reporting in SIMAN.





ISTITUTO G. CAPORALE
TERAMO



CRN Brucellosi
Centro di Referenza Nazionale

Actions at a Regional level (Sicily)

Action taken in Sicily after the arriving of the Task Force

- Institution of a Task Force in the ASP of Messina
- follow up in outbreaks of brucellosis of at least 21 days up to a maximum of 30 days
- electronic identification of all animals of the outbreak, all animals directed to transhumance and all ovi-caprine
- compulsory use of SANAN system and SIMAN system
- drawing of epidemiological reports, by Region Sicily, every three months through SANAN
- GPS identification of all holdings and pasture through National Database
- stamping out of infected S & G holdings after 5th consecutive positive control
- audits carried out in Local Veterinary Units
- epidemiological reports sent every three months to Local Veterinary Units





Ministero della Salute

Thank you for your attention

