



## National Sanitary Veterinary and Food Safety Authority of Romania

### Information on Newcastle disease in an indoor commercial broiler farm in Romania

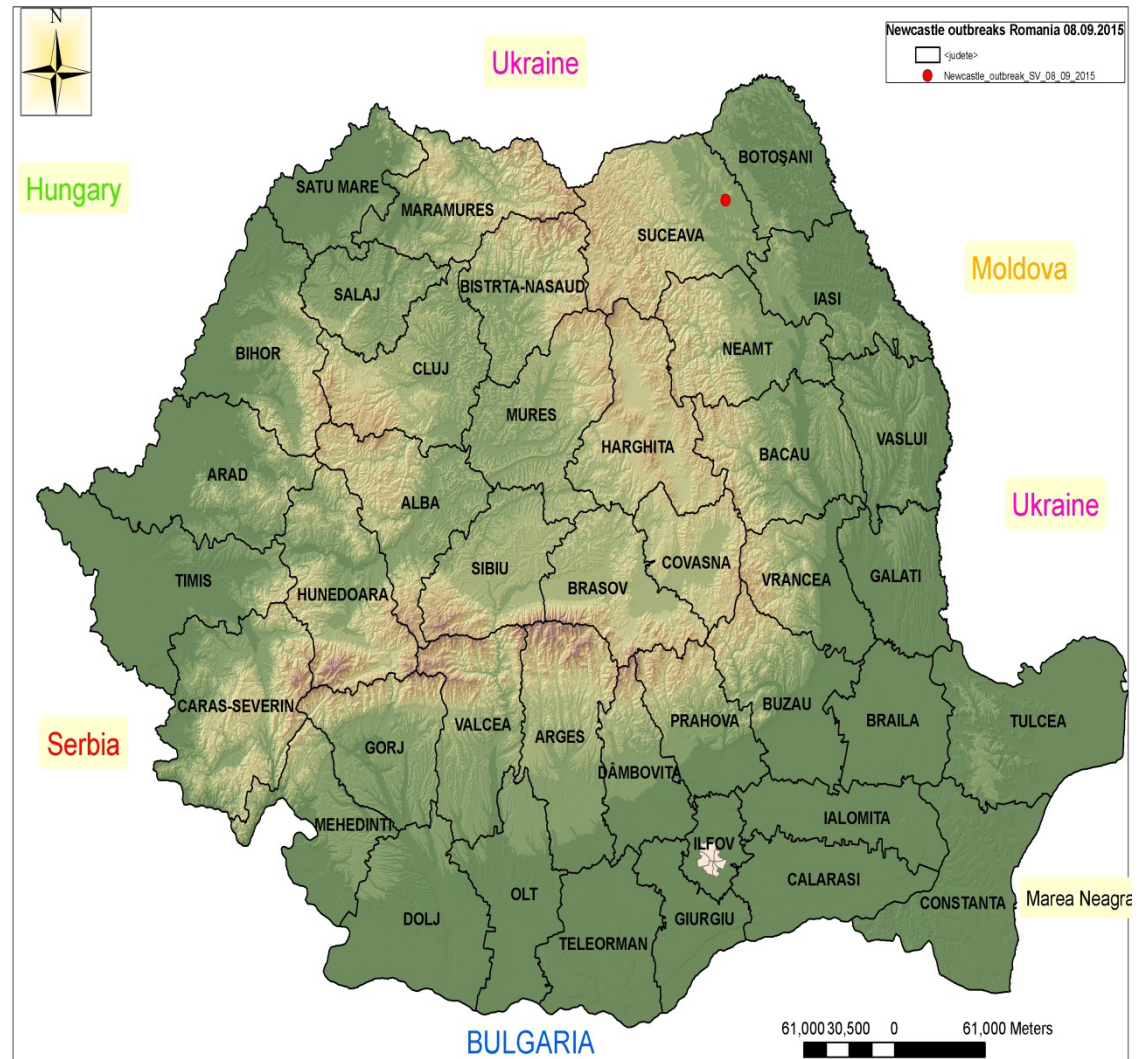
PAFF Committee, 7-8 October 2015  
Brussels



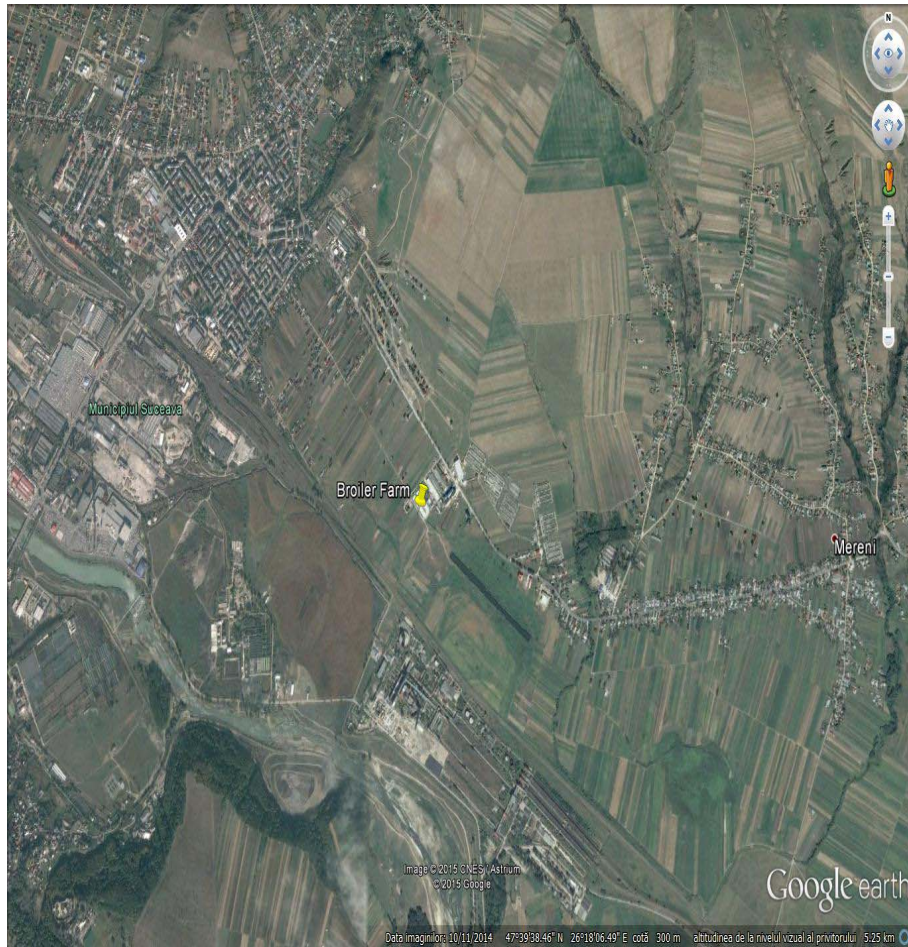
Newcastle disease outbreak in an indoor commercial broiler farm,  
08.09.2015, Suceava locality  
, Suceava County

- Location of the outbreak:  
Suceava County,  
Suceava locality,  
North of Romania

Longitude: 26.175542  
Latitude: 47.393362



# Newcastle disease outbreak in a commercial indoor broiler farm, 08.09.2015, Suceava County, Suceava locality



**Outbreak holding:** Broilers in 2 houses, each shelter with 2 compartments. Introduction of 65.000 one day old chicks in 02/08/2015, origin in IC trade; 2000 were sold at 2-3 days, 9390 - loses in production process, from 02.08.2015 to 25.08.2015.

**First signs of disease:** on 25-th of August, high morbidity and mild mortality. Until 8-th September, 44610 chickens died.

**Suspicion:** notified by phone by the **County Veterinary Authority (SVFSD)**, on 2-th of September; restriction on poultry movement established, measures according with the provisions of the Council Directive 92/66/EEC.

**Confirmation:** at NRL on 08.09.2015; infection with a mezogene/velogene strain. The sequence of aminoacids was found to be SGGRRQKRFIG, the same as the strain from Ialomita County, in November.

The Report of the OIE, FAO and EU Reference Laboratory shows a similarity of 99,7% to RO 15-0003876 CK and RO-14039189CK (outbreaks in Ialomita County, November 2014, and Constanta County, January 2015).



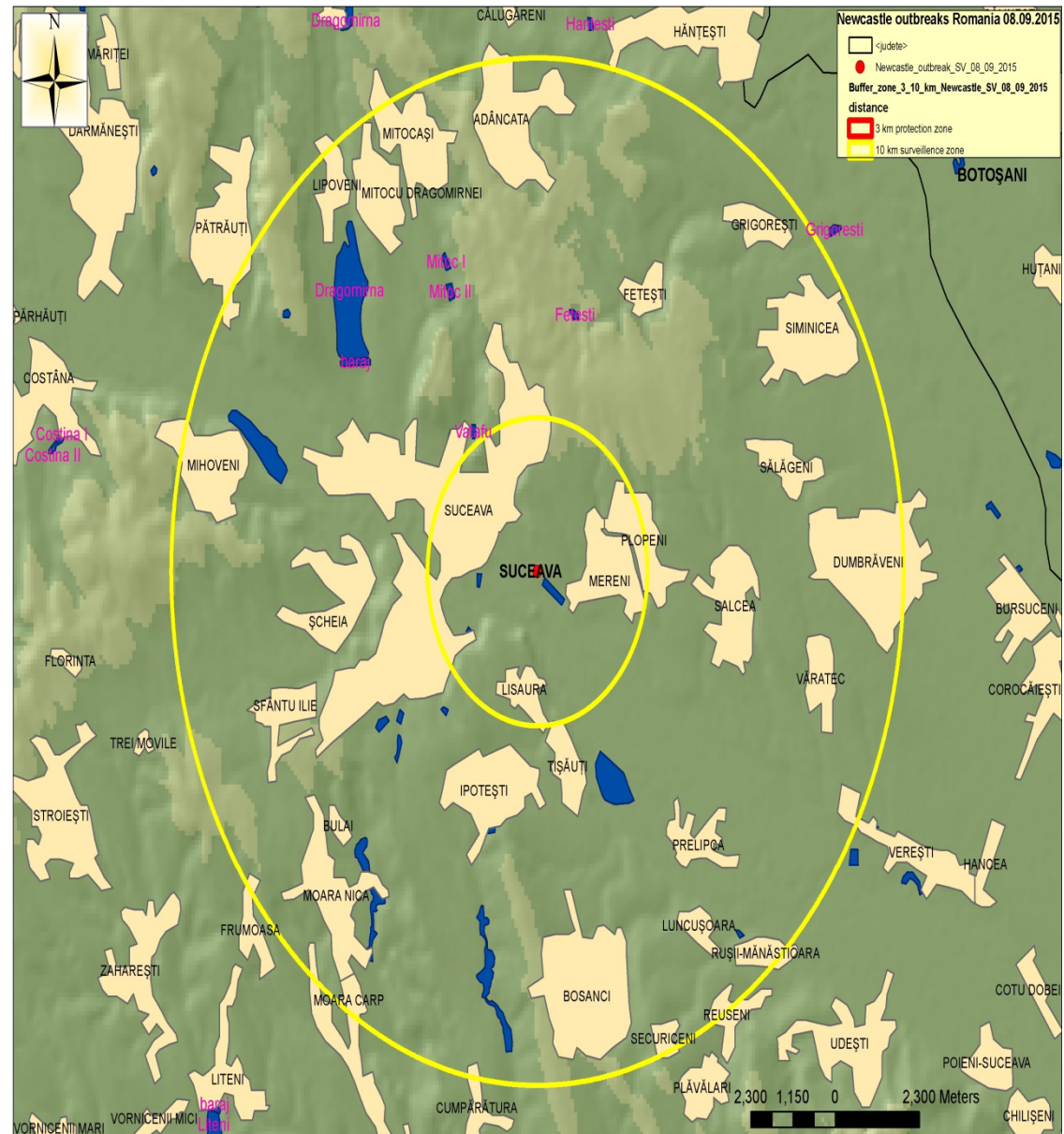


- the flock was vaccinated on 01.08.2015 in hatchery, at one day old, with a ND-C2 vaccine; then on 21/08/2015, with a live freeze dried vaccine. The antibodies titer has been tested on 25.08.2015, on 30 sera samples by IHA test, with law results of immunization.
- First visit of official vet in farm on 25.08.2015, following to notification of the suspicion.
- The same day, sampling and sending to the National Reference Laboratory of:
  - a. 10 sets of organs, from which two organs pools were done (brain + organs + intestines);
  - b. 5 cadavers from which they sampled fragments of organs from which they had prepared 1 organs pool (brain, organs, intestine);
  - c. 30 samples sera tested for the antibody detection anti-virus for Newcastle disease through IHA reaction.

Accordingly to the Analysis Report no. 13377/08.09.2015, the samples reacted positive at the virus isolation test (02.09.2015), identification of the viral genome (02.09.2015), and the identification and characterization of the Newcastle disease virus - gene sequencing (08.09.2015).



- 3 km protection zone: 1 commercial empty poultry farm, 4 localities with backyard poultry
- 10 km surveillance zone including the 3 km protection zone; one hatchery and one empty poultry farm, and 30 localities with backyard farm with poultry;



## Clinical inspection in backyard poultry, in the protection zone

Nr. crt	Locality and schedule of visit	No of holding inspected	No. of holding with receptive poultry	No. of receptive poultry	Clinical healthy
1	Plopeni 10-11.09.2015	1268	636	8426	8426
2	Suceava 10-11.09.2015	162	162	3941	3941
3	Lisaura 10-11.09.2015	400	145	1036	1036
4	Mereni 10-11.09.2015	115	77	1143	1143
	Total	1945	1020	14546	14546



## Clinical inspections in the surveillance zone

Nr. crt	Locality and schedule of visit	No of backyard inspected	No. of backyard with receptive poultry	No. of receptive poultry	Clinical healthy
	31 localities	12.528	7661	108.486	108.486



- The **culling** of the poultry was completed on 09-10.09.2015;
- All cadavers have been **disposed** in a rendering plant on 11.09.2015;
- The **first disinfection** was completed on 12.09.2015. Cleaning was completed on 25-26.09.2015 , and the second disinfection on 28-29.09.2015
- Local CA ordered no trade in live poultry, eggs, poultry products, manure or bedding out of the restriction zones in Suceava County;
- The cleaning is finished, the manure was collected and destroyed in a rendering plant;
- Disinfection is ongoing;
- Clinical examinations and inspections in the restriction zones are finalized.





- Epidemiology, tracing back:
- According to results of the EURL, it seems that the source of virus it is maintained in wild birds. Accidentally, some breaches in the biosecurity system could allow the contact of wild birds with domestic poultry, but there is no proof in favor of this.
- Tracings of people, vehicles was not relevant
- The investigation ongoing.
  
- No other poultry reported as sick or found dead in the area
  
- Spread/Trace Forward: We have not identified any movement of live poultry, or day old chicks from Suceava County to other Member States during the high risk period.
  
- The final report will be provided during this month.



Thank you very much for your attention!

