

Foot and Mouth Disease in the UK (Surrey)

Fred Landeg
Deputy Chief Veterinary Officer

SCoFCAH 18 September 2007



PLEASE NOTE

These slides represent the position in the UK on 17 September 2007 before the confirmation of IP5 on the 18 September 2007

Agenda

- Summary of initial incident (2 cases)
- Infected Premises 3 and 4
- Laboratory diagnosis
- Protection zone
- Epidemiology

defra Department for Environment Food and Rural Affairs

Animal health and welfare

Contact us | Access to information | News | Site A-Z | Search

Animal Health & Welfare | Environmental Protection | Exports & Trade | Farming | Marine & fisheries | Food & Drink | Horticulture | Plants & Seeds | Research & analysis | Rural Affairs | Sustainable Development | Wildlife & Countryside

You are here: [Homepage](#) > [Animal health & welfare](#) > [Foot and Mouth Disease](#)

Foot and Mouth Disease

Disease surveillance & control

FMD homepage

- Latest situation
- Investigations into the outbreak
- About FMD
- Advice to farmers
- Advice to the public
- Disease control, vaccination
- Movement guidance & licences
- Food, meat and animal by-products
- Access to the countryside
- Publications & factsheets
- 2001 outbreak

See also

- Biosecurity
- Exotic Notifiable Disease Investigations
- Qualitative Risk

On 12 September Foot and Mouth Disease was confirmed at a farm in Surrey. A single Protection Zone has been put in place around the land of this farm, with a Surveillance Zone of 10 kilometres radius beyond that. Cattle on the affected farm have been culled, together with animals on an adjacent farm, where disease was confirmed by laboratory testing on the 14th September.

Initial sequencing of the virus showed this to be type O1 BFS. Laboratory results on the 15th September confirmed that the strain found at the latest infected premises is the same as that in the August outbreak, namely O1 BFS 67.

On the afternoon of Saturday 15th, the decision was taken to slaughter on suspicion pigs on a farm in close proximity to the two Infected Premises in Surrey.

A national movement ban - affecting cattle, sheep, pigs and other ruminants - was imposed throughout England, with parallel arrangements in Scotland and Wales. No movements are allowed, except under licence. As from midnight Saturday 15th September, further movements of animals susceptible to Foot and Mouth Disease direct to slaughter are permitted, under strict biosecurity conditions, from outside the Surveillance Zone in England.

All farms - particularly those in the Protection and Surveillance Zones - must implement increased biosecurity. Further details are in News Releases/Information Bulletins listed on our latest situation page.


Latest situation - Information on the latest situation in the UK.
Movement guidance and licences

If you suspect signs of any notifiable disease, you must immediately notify a Defra Divisional Veterinary Manager. If you need further information or advice not covered by these pages please contact the **Defra Helpline on 08459 33 55 77** which is currently operating between 6am to 10pm Monday to Friday and 9am to 5pm Saturday and Sunday.

External links

- [Surrey County Council](#)

Key current information



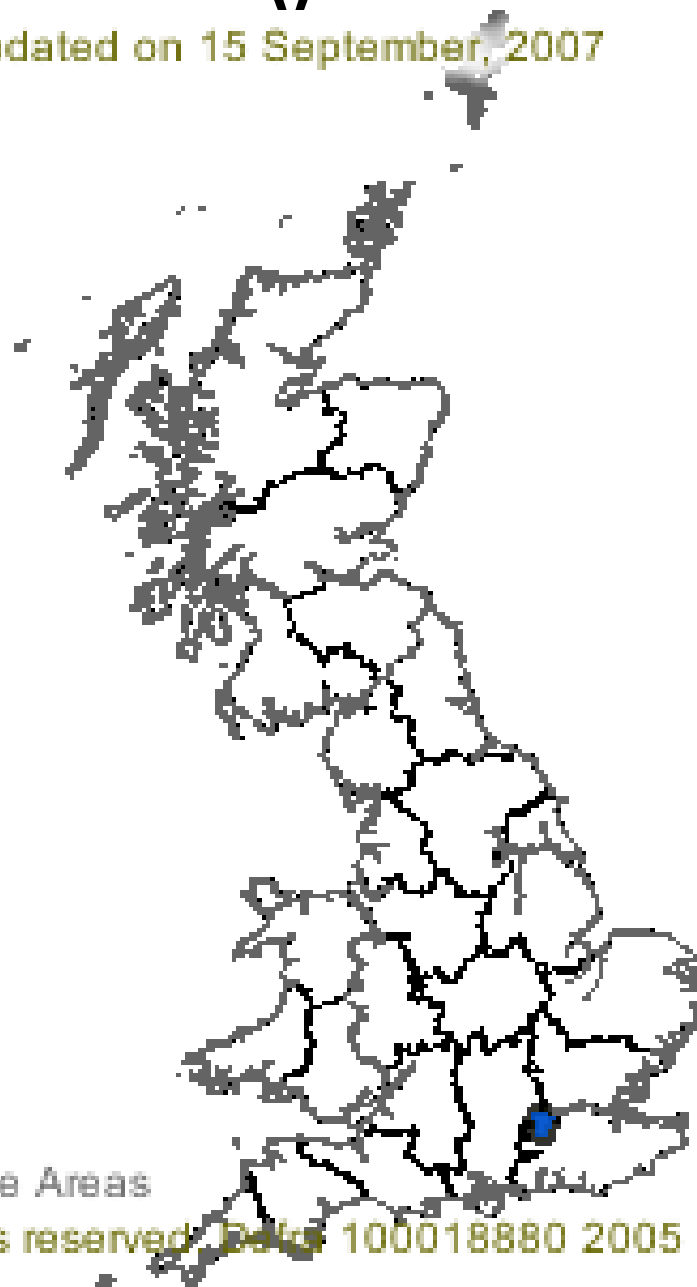
Declaration of a Protection Zone and Surveillance Zone in Surrey (476 KB)

- **News story** (updated 15/09/07)
- **Information for farmers in the Protection and Surveillance Zone**
- **Interactive map**
- **Foot and Mouth:**

Internet

<http://www.defra.gov.uk/footandmouth>

Restriction information last updated on 15 September, 2007



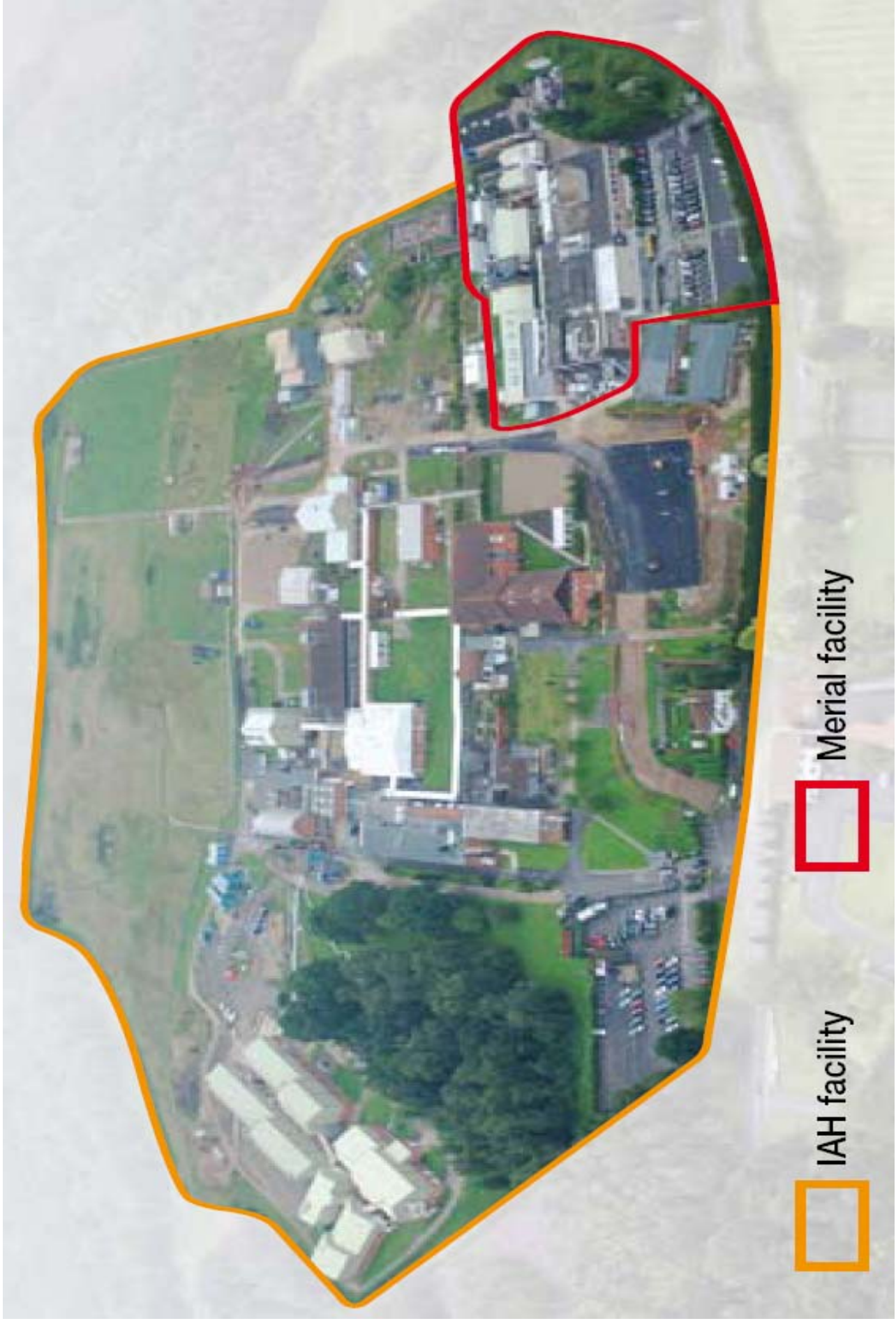
Animal Health Divisional Office Areas

(C) Crown Copyright. All rights reserved. Data 100018880 2005

a
I

Initial incident 2007

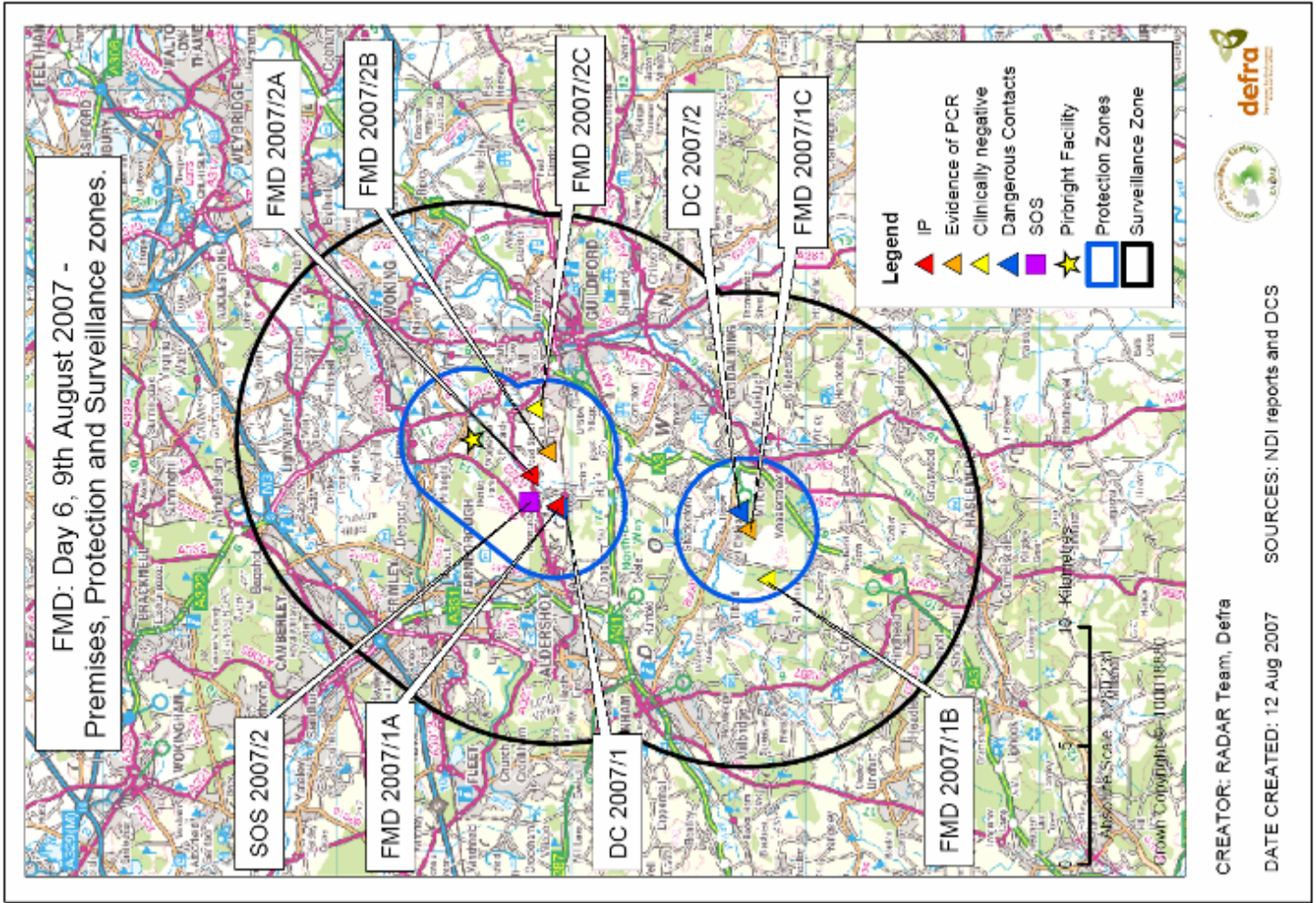
- 3 Aug: IP1 (3 locations)
- 6 Aug: IP2 (3 locations)
- 3 contact herds culled
- 24 Aug: PZs lifted
- 8 Sep: SZ lifted
- Origin: contamination from Pirbright site



IAH facility



Merial facility



CREATOR: RADAR Team, Defra
 DATE CREATED: 12 Aug 2007 SOURCES: NDI reports and DCS

Infected Premises 3

- Confirmed 12 Sep 2007
- 281 cattle
- 8 pigs
- 8 locations
- Clinical findings
- 2 locations positive in lab
- Culling of initially affected group completed 13 Sep
- Culling completed 16 Sep

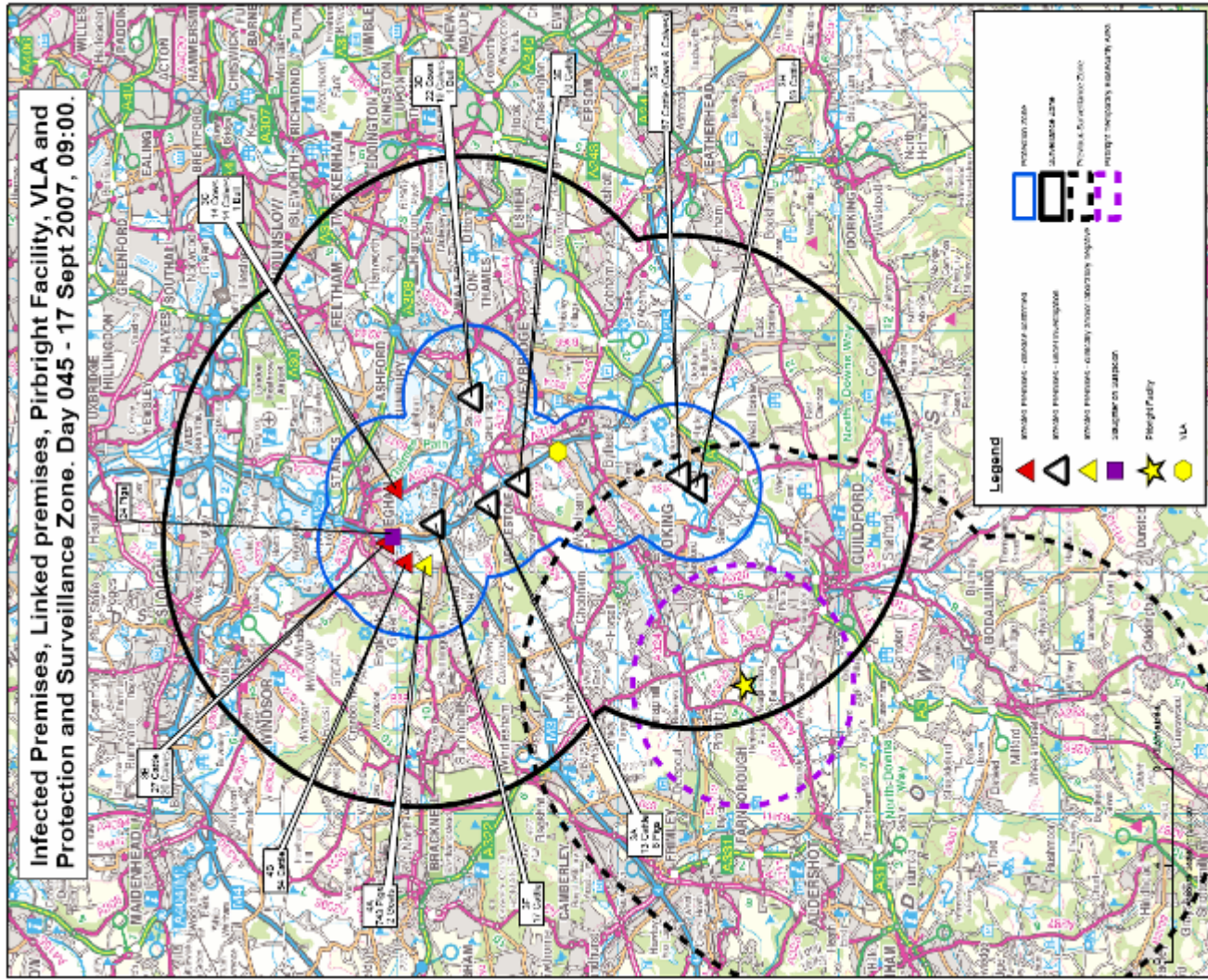
Infected Premises 4

- Confirmed 15 Sep
- 54 cattle (location B)
- 743 pigs (location A)
- Clinical findings in cattle only
- Laboratory – cattle positive, pigs negative
- Culling completed 16 Sep

Slaughter on Suspicion

- Near to IP 3
- 24 pigs
- Culling completed 15 Sep
- Laboratory tests negative

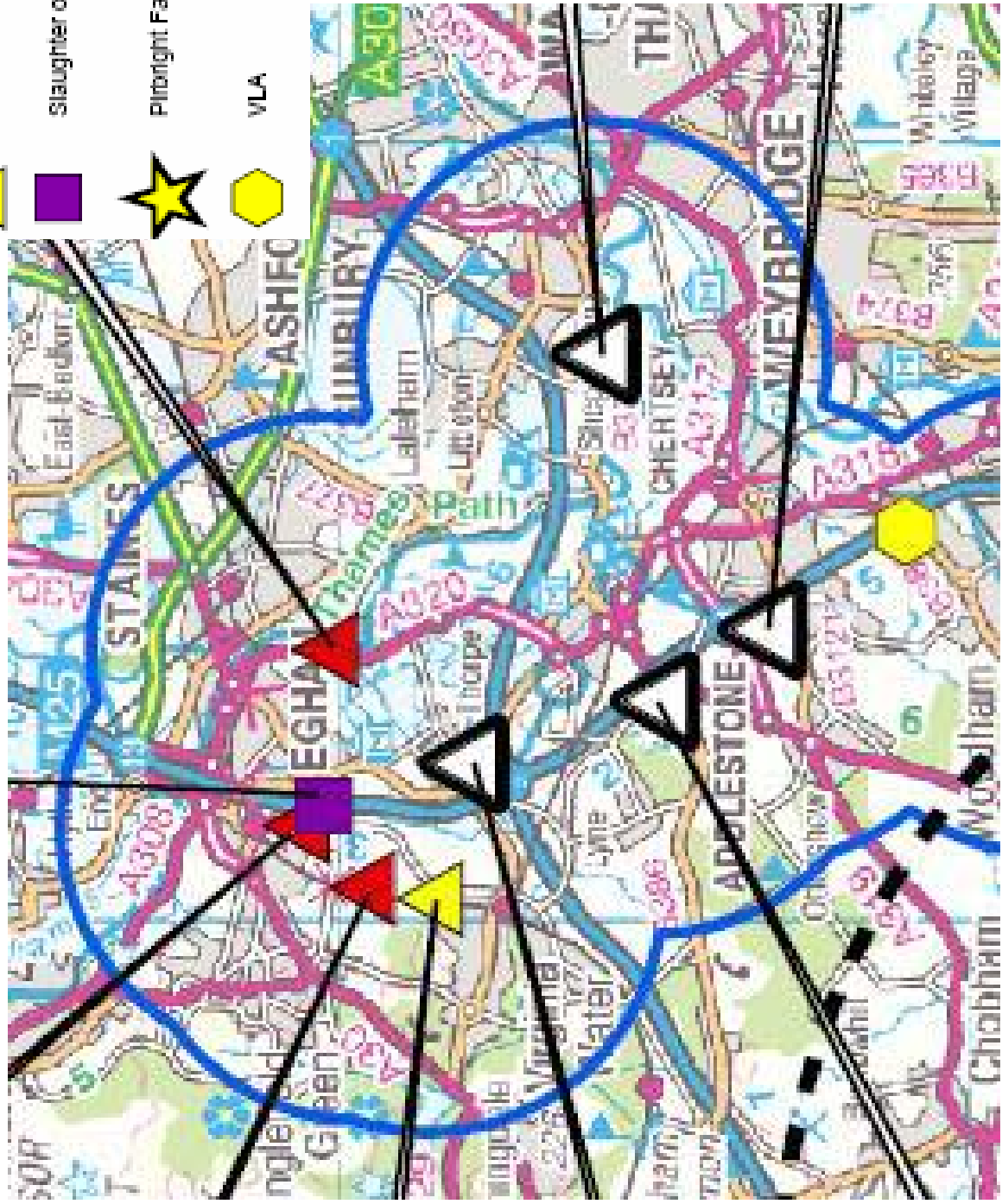
Infected Premises, Linked Premises, Pirbright Facility, VLA and Protection and Surveillance Zone. Day 045 - 17 Sept 2007, 09:00.



CREATOR: RADAR Team, Defra
 DATE CREATED: 17 Sep 2007 SOURCES: NDI form



- ▲ Infected Premises - disease confirmed
- △ Infected Premises - under investigation
- ▲ Infected Premises - clinically and/or laboratory negative
- Slaughter on Suspicion
- ★ Pirbright Facility
- VLA



Infection Timeline

Day	13	14	15	16	17	18	19	20	21	22	23	24	25	26	27	28	29	30	31	32	33	34	35	36	37	38	39	40	41	42	43	44	Date					
Date	16/08	17/08	18/08	19/08	20/08	21/08	22/08	23/08	24/08	25/08	26/08	27/08	28/08	29/08	30/08	31/08	01/09	02/09	03/09	04/09	05/09	06/09	07/09	08/09	09/09	10/09	11/09	12/09	13/09	14/09	15/09	16/09	Date					
Day	Thu	Fri	Sat	Sun	Mon	Tue	Wed	Thu	Fri	Sat	Sun	Mon	Tue	Wed	Thu	Fri	Sat	Sun	Mon	Tue	Wed	Thu	Fri	Sat	Sun	Mon	Tue	Wed	Thu	Fri	Sat	Sun	Day					
Source window for IP4					IP4 most likely source window 20/08 to 01/09																														Source window for IP4			
Day 0 IP4																																		Day 0 IP4				
Spread window for IP4																																		Spread window for IP4				
Source window for IP3B									*	IP3B most likely source window 24/08 to 06/09																												Source window for IP3B
Day 0 IP3B																							*											Day 0 IP3B				
Spread window for IP3B																							*											Spread window for IP3B				
Source window for IP3C																																		Source window for IP3C				
Day 0 IP3C																																		Day 0 IP3C				
Spread window for IP3C																																		Spread window for IP3C				
	*	28 out of 29 cattle tested and found to be negative on serology. Therefore, expert opinion confirms that lesions ages must be five days or less.																																				

Movement Restrictions

- 12 Sep - Immediate GB-wide movement ban
- Export certificates withdrawn
- Movements to slaughter now permitted
- Local welfare movements under licence

Foot and Mouth Disease: Interactive map

Foot and Mouth Disease
Homepage

Interactive map

- > How do I use the map?
- > What does it show?

Search

Place name, postcode or
map reference:

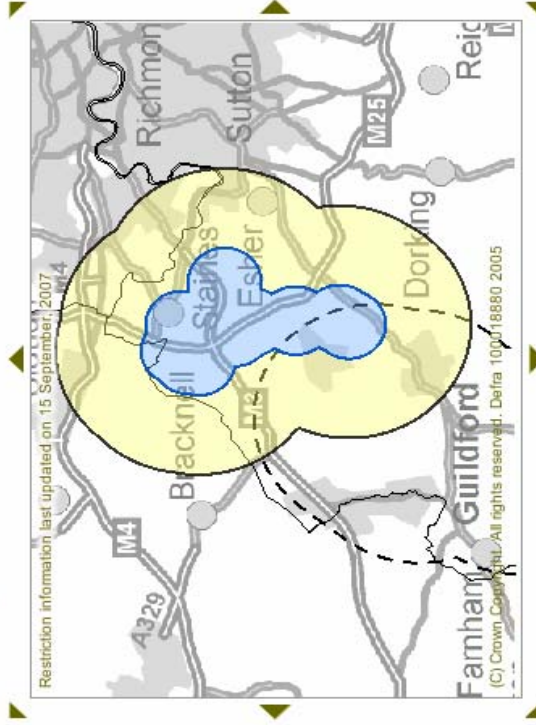
[Expand Search](#)

Restrictions

- Foot and Mouth Protection Zone
- Foot and Mouth Surveillance Zone
- Former Foot and Mouth Surveillance Zone

Click on the map to:

- Zoom in
- Display local Animal Health Divisional Office information



Larger Map

Zoom Out Zoom In

Any general enquiries regarding Foot and Mouth Disease should be made to the Defra Helpline: 08459 335577. **For active or suspicious Foot and Mouth related matters please contact your local AHDO.**

Please note that scheduled maintenance will take place some time after 17:00 for up to 45 minutes this evening. The map will be unavailable at this time.



Foot and Mouth Disease
Homepage

Interactive map

- > How do I use the map?
- > What does it show?

Search

Place name, postcode or
map reference:

[Expand Search](#)

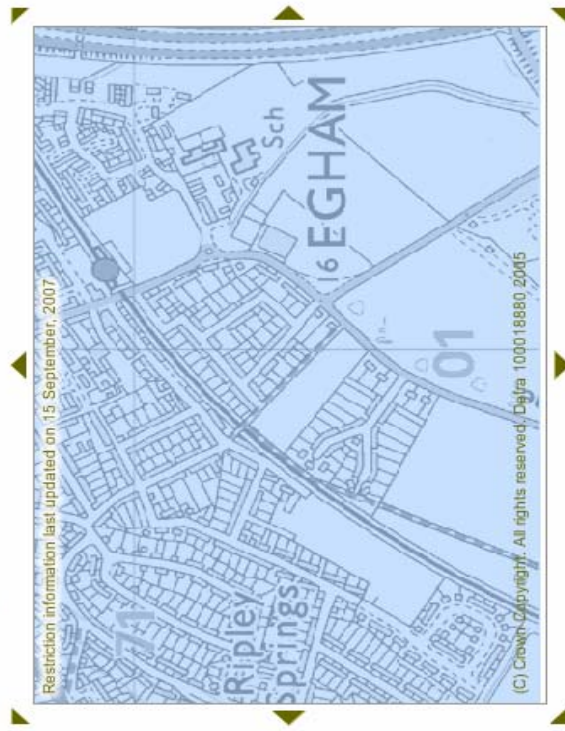
Restrictions

- Foot and Mouth Protection Zone
- Foot and Mouth Surveillance Zone
- Former Foot and Mouth Surveillance Zone

Foot and Mouth Disease: Interactive map

Click on the map to:

- Zoom in
- Display local Animal Health Divisional Office information



Larger Map



Zoom Out Zoom In



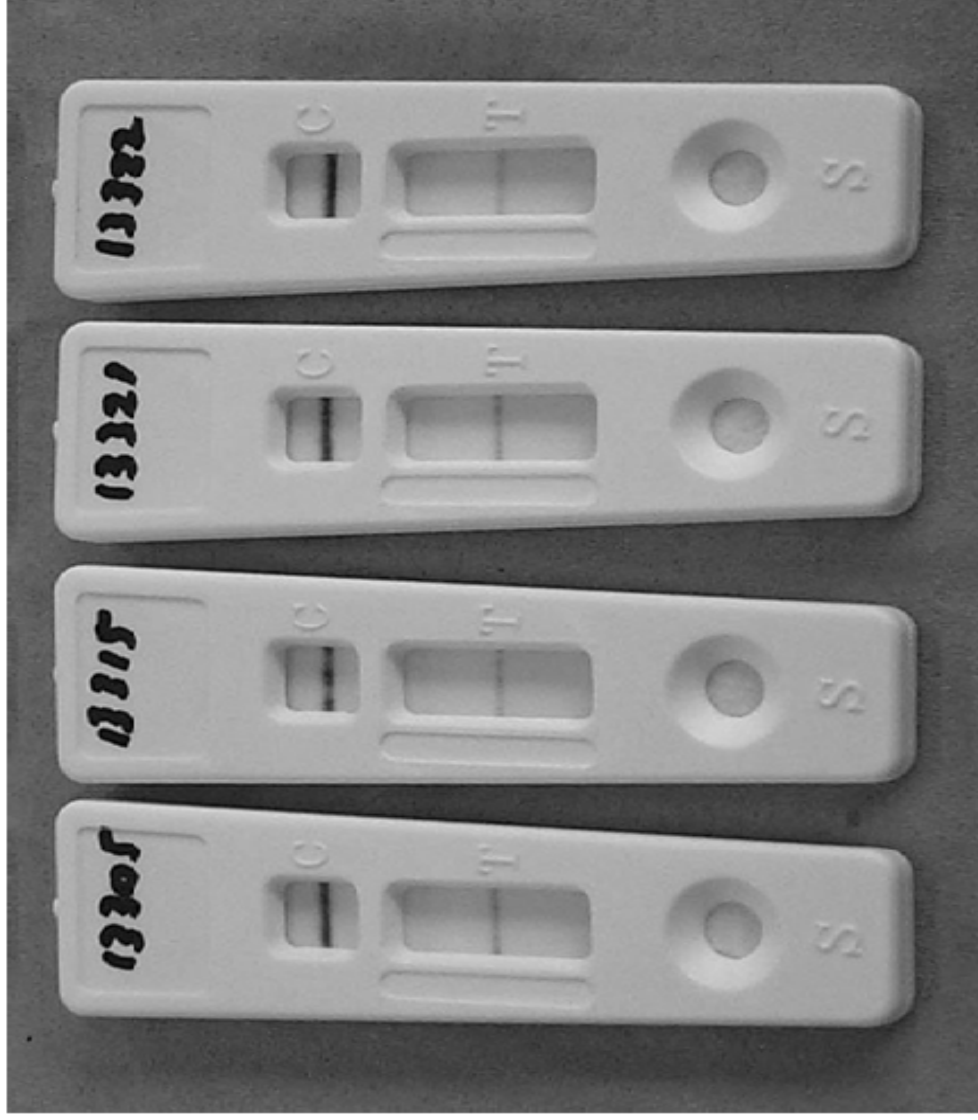
Any general enquiries regarding Foot and Mouth Disease should be made to the Defra Helpline: 08459 335577. **For active or suspicious Foot and Mouth related matters please contact your local AHDO.**

Please note that scheduled maintenance will take place some time after 17:00 for up to 45 minutes this evening. The map will be unavailable at this time.

Laboratory Diagnosis

- Rapid confirmation with results from lateral flow device in laboratory
- O1 BFS 1860/67UK
- Similar to that found on IP1 and IP2

Lateral-flow devices for the detection of FMDV Antigen



Data from Nigel Ferris

PZ Census

- Data from NEEG as at 12:30 16 Sep
- Cattle & pig holdings - 33
- Holdings with only sheep & goats – 24
- Mixed – 14

	Sheep	Goats	Cattle	Pigs	Other
Head	798	45	1861	726	1

Protection zone

- Data as at 16 Sep
- 71 holdings with susceptible livestock (out of 256)
- Two dairy herds
- No markets, staging posts or assembly centres
- All holdings with stock have received at least one clinical inspection
- All small ruminant flocks sampled

Epidemiology – spread from IPs

- No live animal spread tracings from IP3 or IP4 identified.
- Tracings in relation to personnel, manure etc
 - 9 have been identified for IP3
 - Included within this are the carcasses (currently under detention) from cattle moved from IP3 to local abattoir.
 - 8 have been identified for IP4

Protection Zone tracings

- Information on spread tracings has been obtained from all premises with susceptible livestock in the PZ.
- Particular attention has been paid to premises lying with 1 km zones around each of the premises (3B, 3C and 4B) on which virus has been present.
- CTS & AMLS data has so far identified 2 animal spread tracings, one of which was direct to a local abattoir.

Surveillance Zone

- 681 sq km² (PZ/SZ combined)
- 842 premises have been identified so far.
- No markets, staging posts or assembly centres

FMD Report Cases

- Data correct as of 12:00 - 17 Sep
- Total of 107 3 Aug – 17 Sep
- 3 under investigation

Conclusions

- Outbreak still localised in an area with low livestock density and few movements
- Source of infection has been linked to initial incident through virology
- No report live animals moved off the infected fragments (under investigation)
- Unlikely that contaminated meat, milk or other products are in circulation