



Highly pathogenic avian influenza in Germany

Current Situation

SCoPAFF-meeting on 16.11.2021

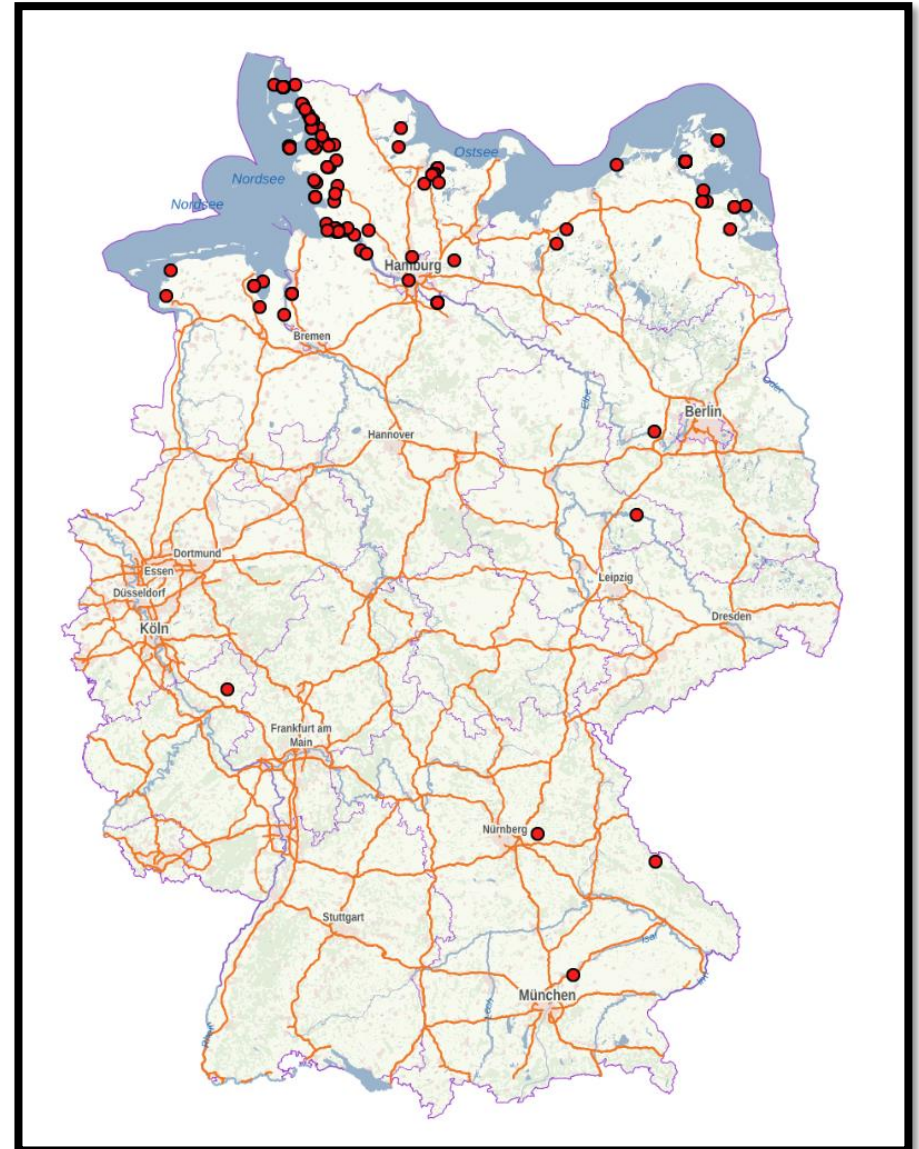
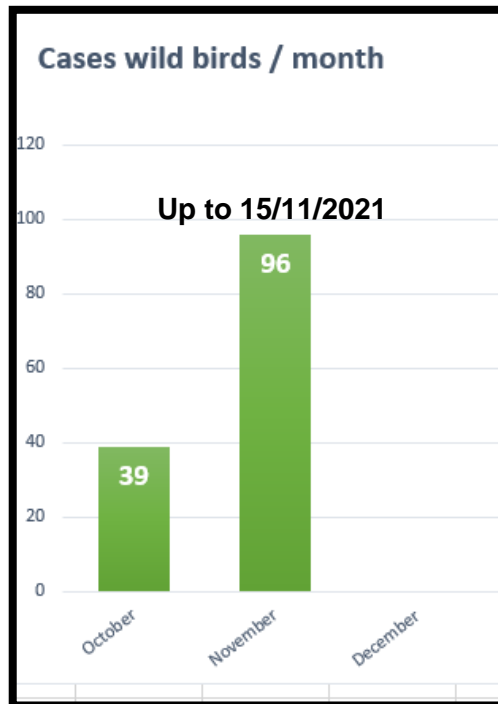
Content

Current situation in:

1. Wild birds
2. Captive birds
3. Poultry
4. Summary

Situation in wild birds

- First case in the new HPAI season confirmed on 15/10/2021
- Amount of cases confirmed from 15.10.2021 up to 15/11/2021: **135 cases**
- Serotypes detected: H5N1



Situation in captive birds

Two outbreaks: both of serotype H5N1 in Mecklenburg-Western Pomerania.

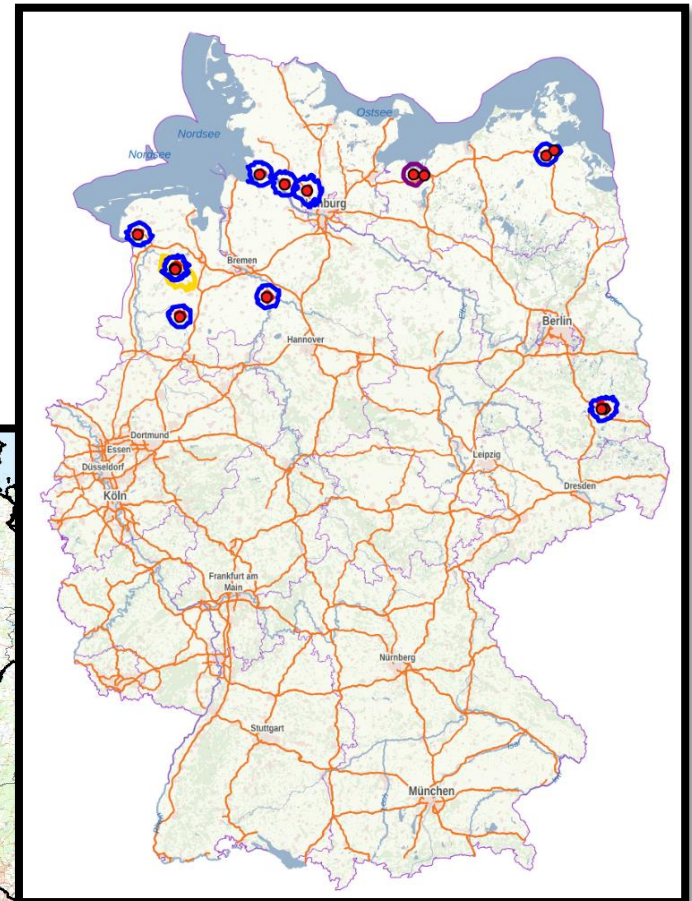
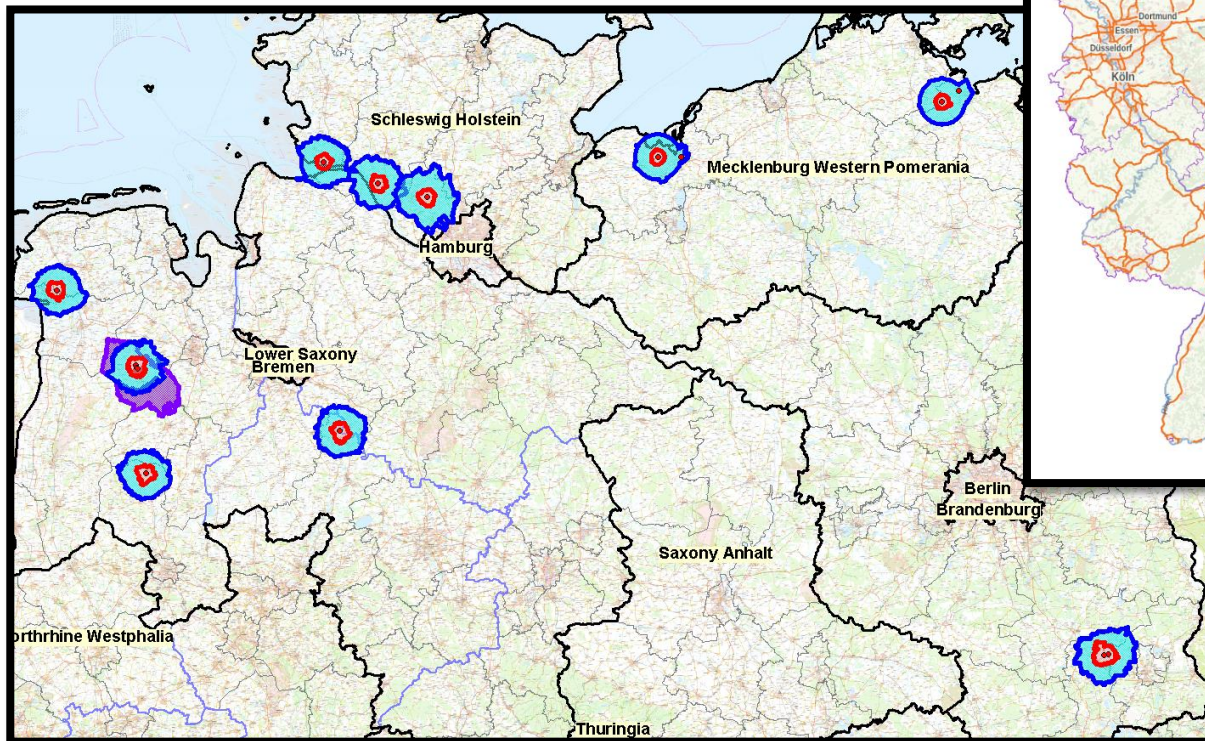
- 1. First outbreak** confirmed on 21/10/2021 in a small zoo with 113 birds.
 - Confirmed in three dead storks.
 - Measures: isolation, sampling, disinfection, movement restrictions.
 - Killing of the 11 positive birds and of the relevant contact birds.
 - Total of 50 birds killed: storks, geese, ducks and rhea (nandu).
 - The flock is under observation and will be sampled again.
- 2. Second outbreak confirmed** on 5/11/2021 in a small holding with 27 birds of special breeds. Measures: stamping out etc.

In both cases derogation from the establishment of restricted zones based on favourable risk assessment. However both outbreak establishments have been included in other restricted zones related to outbreaks in poultry.

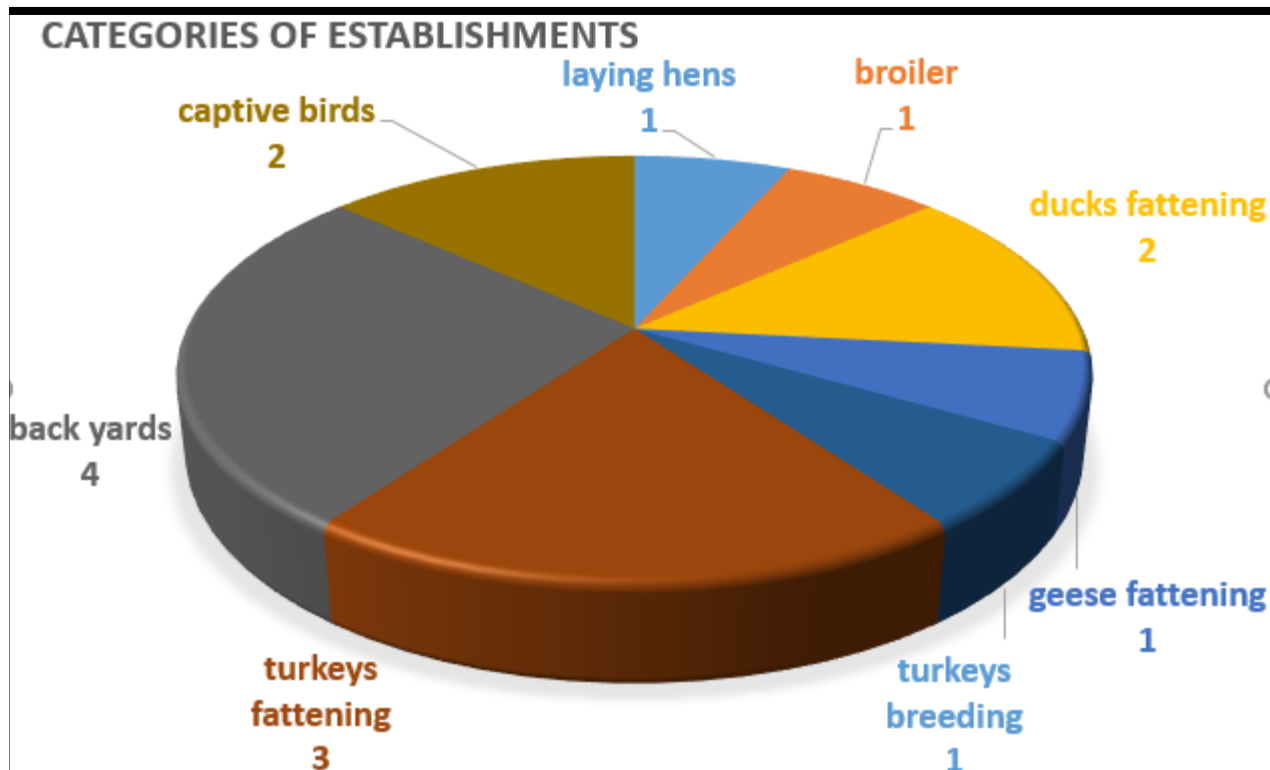


Situation in poultry

- First case in poultry confirmed on 23/10/2021.
- **13 outbreaks** confirmed up to 15/11/2021.
- Serotypes detected: **H5N1**



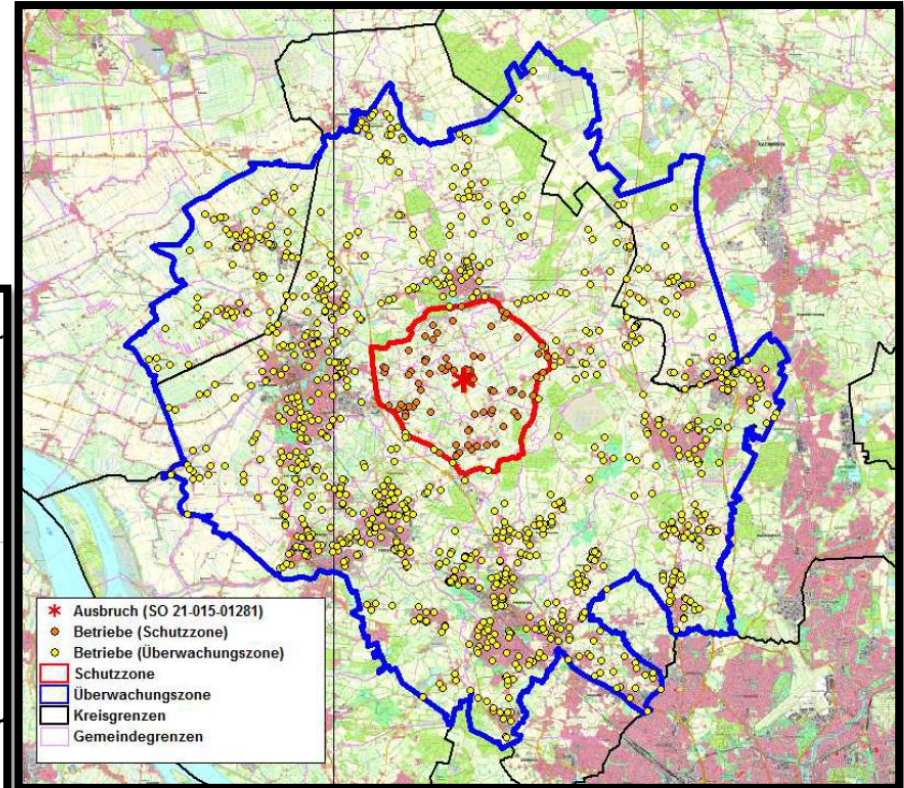
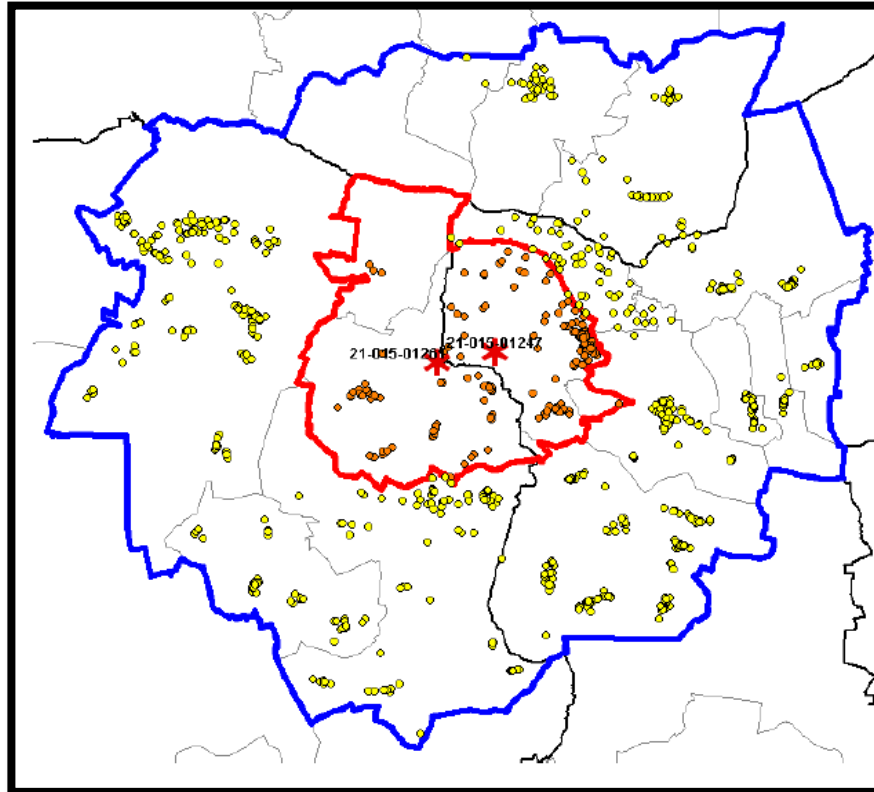
Categories of affected establishments



Examples of restricted zones

Schleswig-Holstein
ADIS 2021-00005

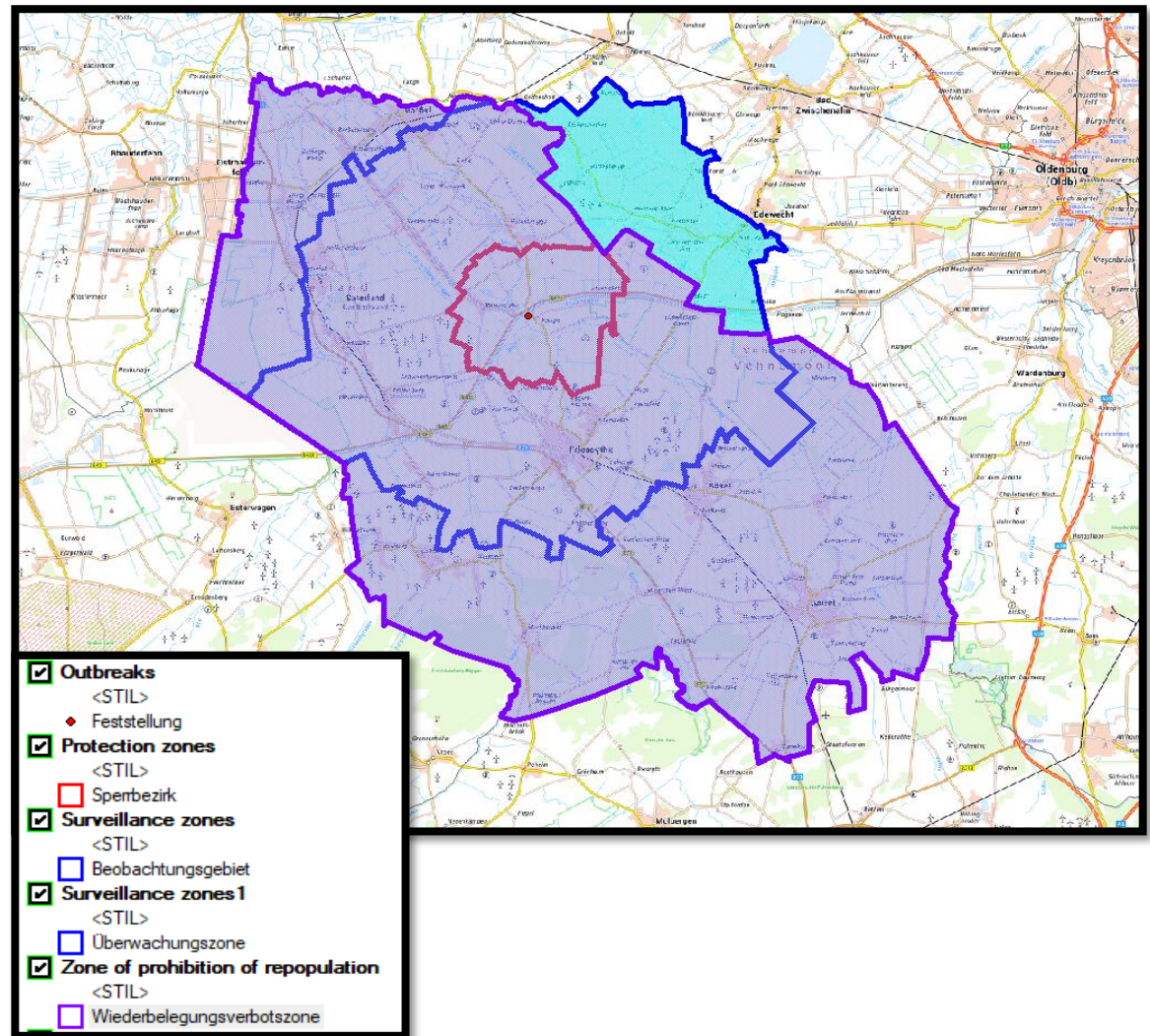
Brandenburg
ADIS 2021-00002
and 2021-00004



Additional restricted zone established

Zone for prohibition of repopulation of ducks and turkeys in the high density region of the district of Cloppenburg in Lower Saxony.

During the HPAI-season 2020/2021 the high number of outbreaks triggered the development of a cluster in that region.



Summary

1. The risk of occurrence of HPAI in wild birds was upgraded on 13/9/2021 to high by Friedrich Loeffler Institute (Federal Research Centre for Animal Health).
2. With the arrival of infected migratory birds the new HPAI season started in the wild birds population and in poultry establishments.
3. Gained experience from the HPAI-season 2020/2021 is applied in order to ensure an effective response.
4. The free-range keeping of poultry was already prohibited in high risk regions mostly in wet areas and in high density areas.
5. The awareness level of the industry, of the citizens and of the competent authorities is high.
6. The infection pressure posed by infected migratory wild bird is increasing daily.

**Thank you for
your attention!**



Bundesministerium
für Ernährung
und Landwirtschaft