



Food and
Veterinary Service
Republic of Latvia

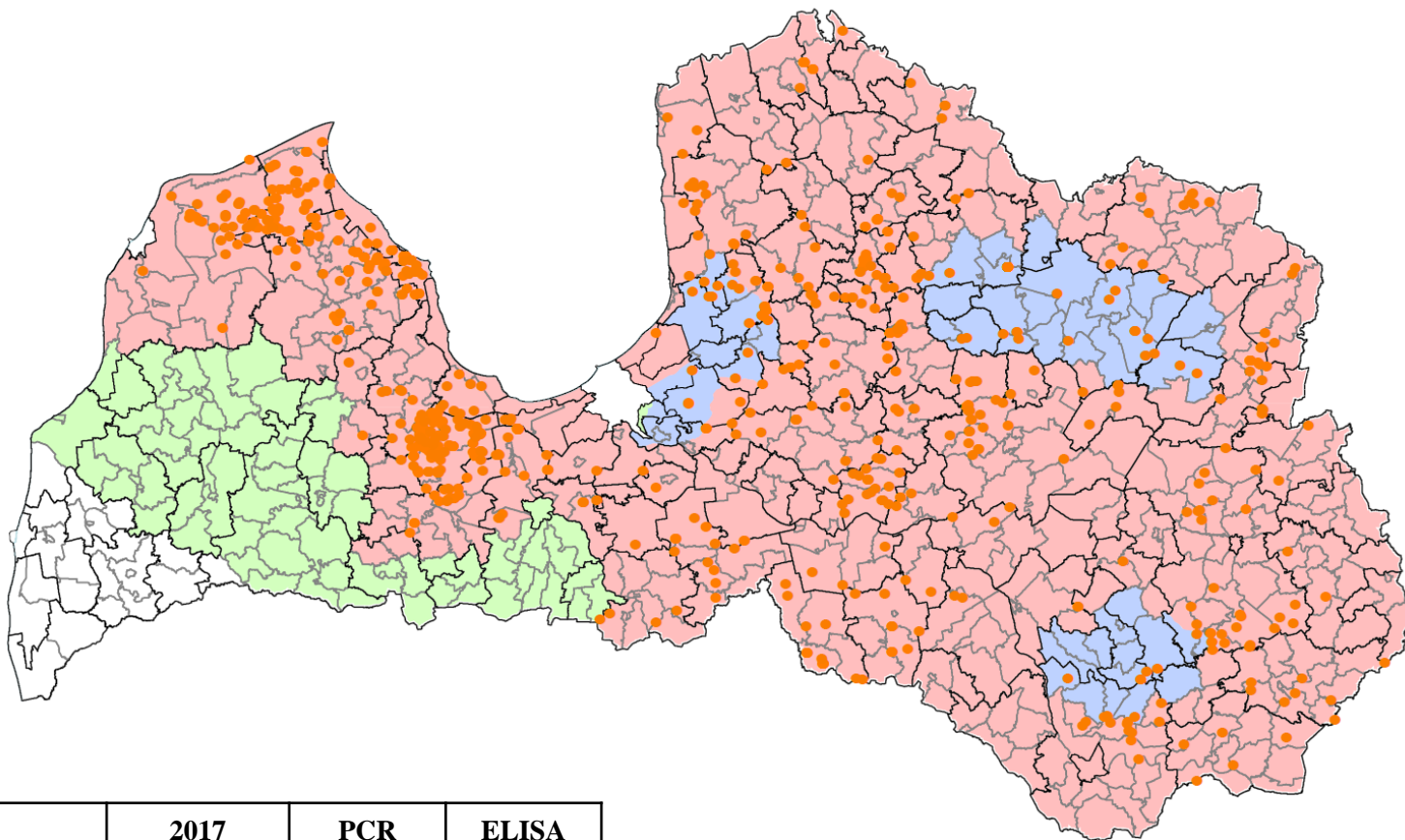
ASF epidemiological situation in Latvia – 2017 (update)

PAFF meeting,
Brussels, 18.09.2017.



Food and
Veterinary Service
Republic of Latvia

ASF cases in 2017 (till 14.09.2017)



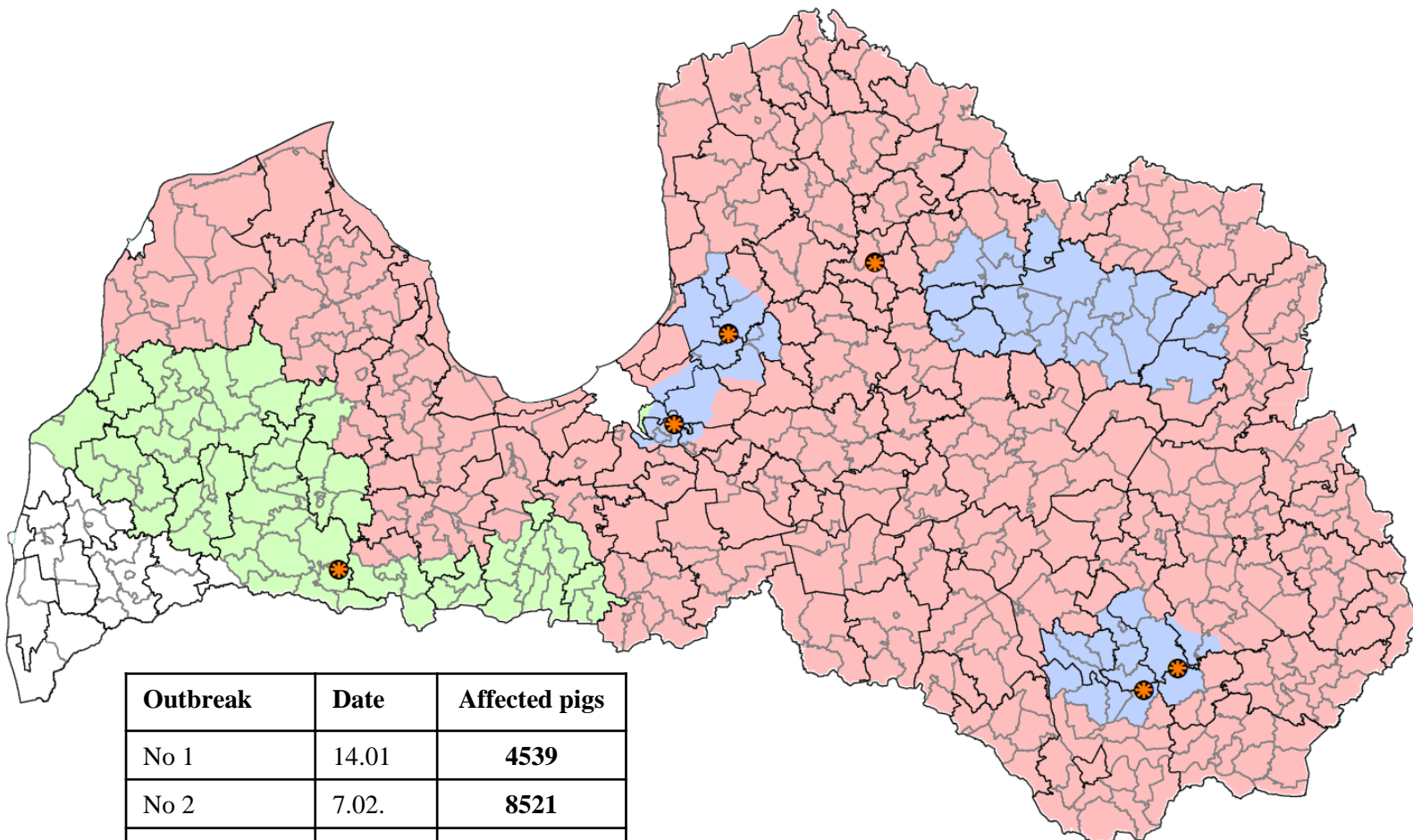
	2017 (14.19.)	PCR	ELISA
Wild boar Tested	9080	9080	8503
Hunted	8336		
Found dead	744		
Wild boar cases	989	767	222
Hunted	403		
Found dead	586		

- Part 1
- Part 2
- Part 3
- WB cases 2017

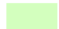





Food and
Veterinary Service
Republic of Latvia

Outbreaks in 2017 (till 17.09.2017)



Outbreak	Date	Affected pigs
No 1	14.01	4539
No 2	7.02.	8521
No 3	12.07.	3
No 4	14.07.	5818
No 5	3.09.	9
No 6	13.09.	23

 Part 1
 Part 2
 Part 3
 Outbreaks 2017



Food and
Veterinary Service
Republic of Latvia

Outbreak No 4/2017 (14.07.2017)

Commercial farm - 5818 pigs.

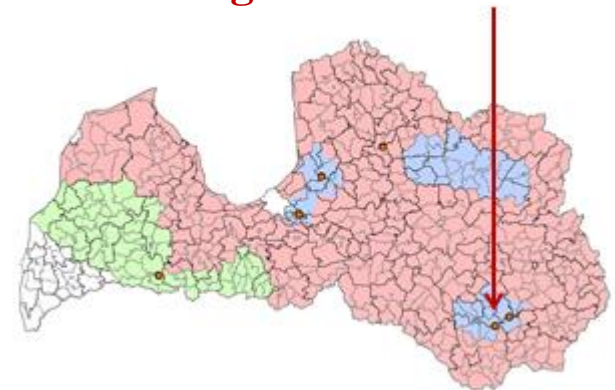
Localization: Daugavpils county Višķu parish

Suspicion notification and laboratory confirmation on 14th July

Results of epidemiological investigation:

- sanitary filter, flow of personnel with several weaknesses
- risk of the farm's territory contamination (transport flow)
- movement of the pigs (sows) between separate corpuses using outdoor path

Hypothesis: indirect contact with wild boar through contaminated environment





Food and
Veterinary Service
Republic of Latvia

Outbreak No 5/2017 (5.09.2017)

Backyard farm - 9 pigs (fatteners)

Localization - Saldus county, Jaunauces parish.

1 pig with clinical signs (fever, hemorrhages on the skin)

Suspicion notified by veterinarian

Confirmation – 5.09.2017.

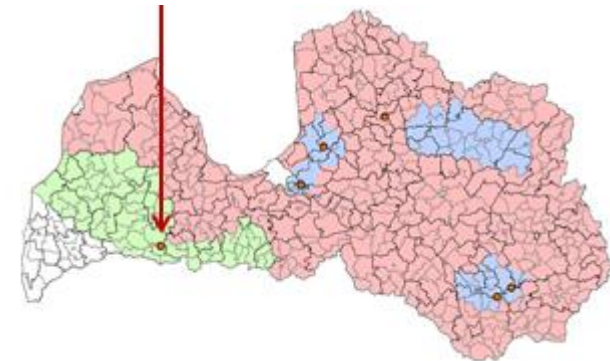
Stamping out and primary disinfection carried out on 05.09.2017.

Territory defined as Part 1 according the Decision 2014/709/EU

Results of epidemiological inquiring:

- No infected wild boars in particular area
- Nearest positive wild boar - 25 km

Hypothesis: kitchen waste - wild berries



All measures according to Council Directive 2002/60/EC have been implemented.

Active surveillance of hunted wild boar in surrounding area has started.



Food and
Veterinary Service
Republic of Latvia

Outbreak No 6/2017 (13.09.2017)

Holding with 23 pigs (2 sows and fattening pigs)

Localization – Priekuļu county, Priekuļu parish

Suspicion notified by veterinarian – 12th September

Confirmation – 13.09.2017.

Stamping out and primary disinfection carried out on 12.09.2017.

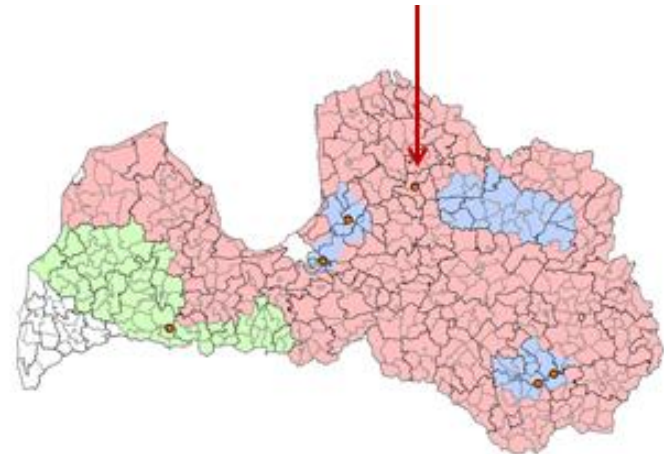
Territory already defined as Part 2 according the Decision 2014/709/EU

All measures according to Council Directive 2002/60/EC have been implemented.

Results of epidemiological inquiring:

- Infected wild boars in particular area
- Feeding of vegetables and apples from garden

Hypothesis: indirect contact with wild boar



Outbreak No 6/2017 (13.09.2017)





Food and
Veterinary Service
Republic of Latvia

Thank you for your attention!