

The National Sanitary Veterinary and Food Safety Authority of Romania



EPIDEMIOLOGICAL SITUATION - ASF



SCoPAFF

03.2020



ASF - EPIDEMIOLOGICAL SITUATION

01.01-12.03.2021

DOMESTIC PIGS		WILD BOARS		
No. of confirmed outbreaks	No. of active outbreaks	No. of positive cases	No. of positive found dead wb	No. of positive hunted wild boars
272	249 from 2021 + 164 from 2020	988	592	396
From which, 7 in comm.farms	413 total			



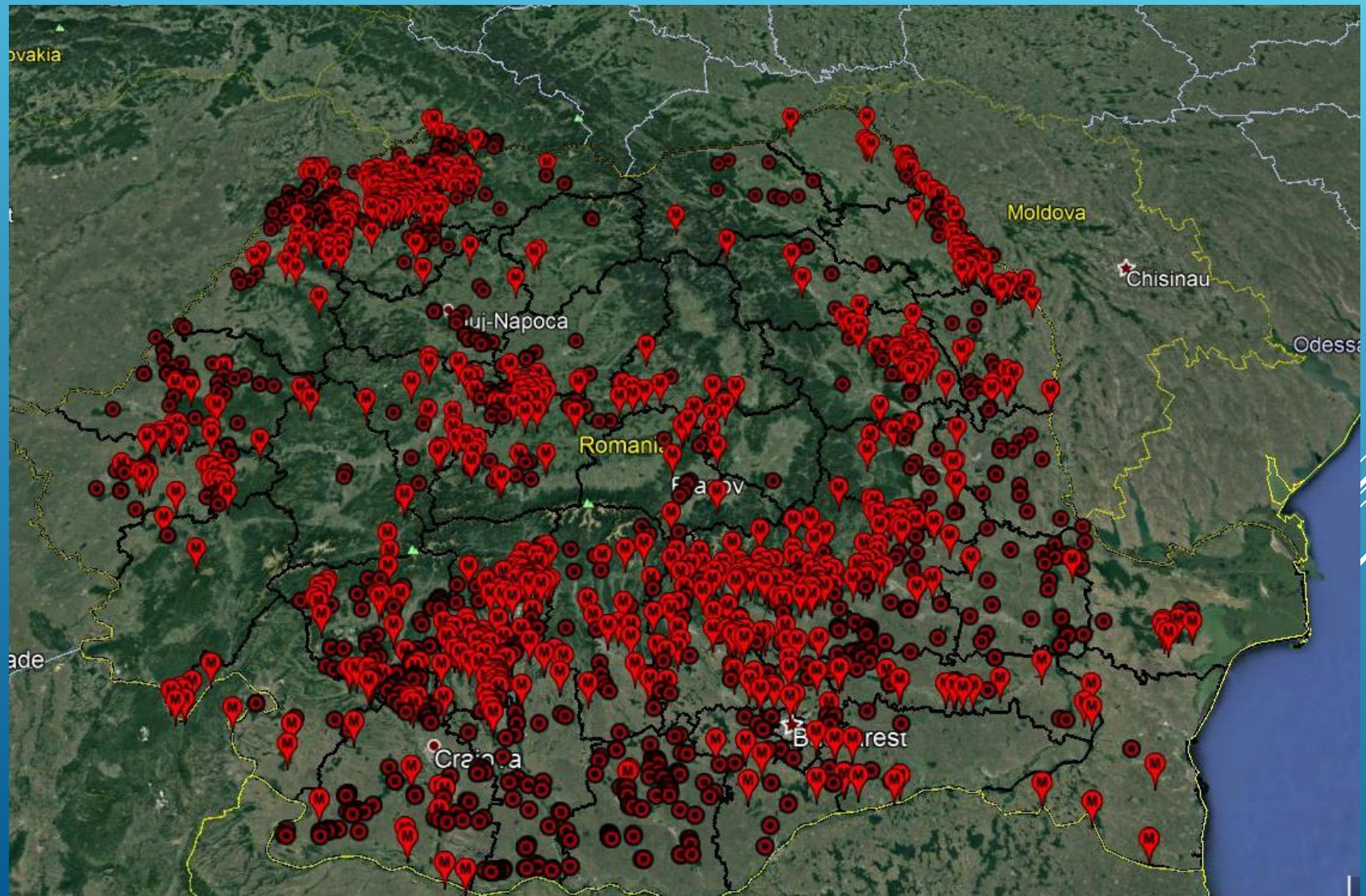
ASF EPI SITUATION (01.01-12.03.2021)



272 DOMESTIC PIGS OUTBREAKS

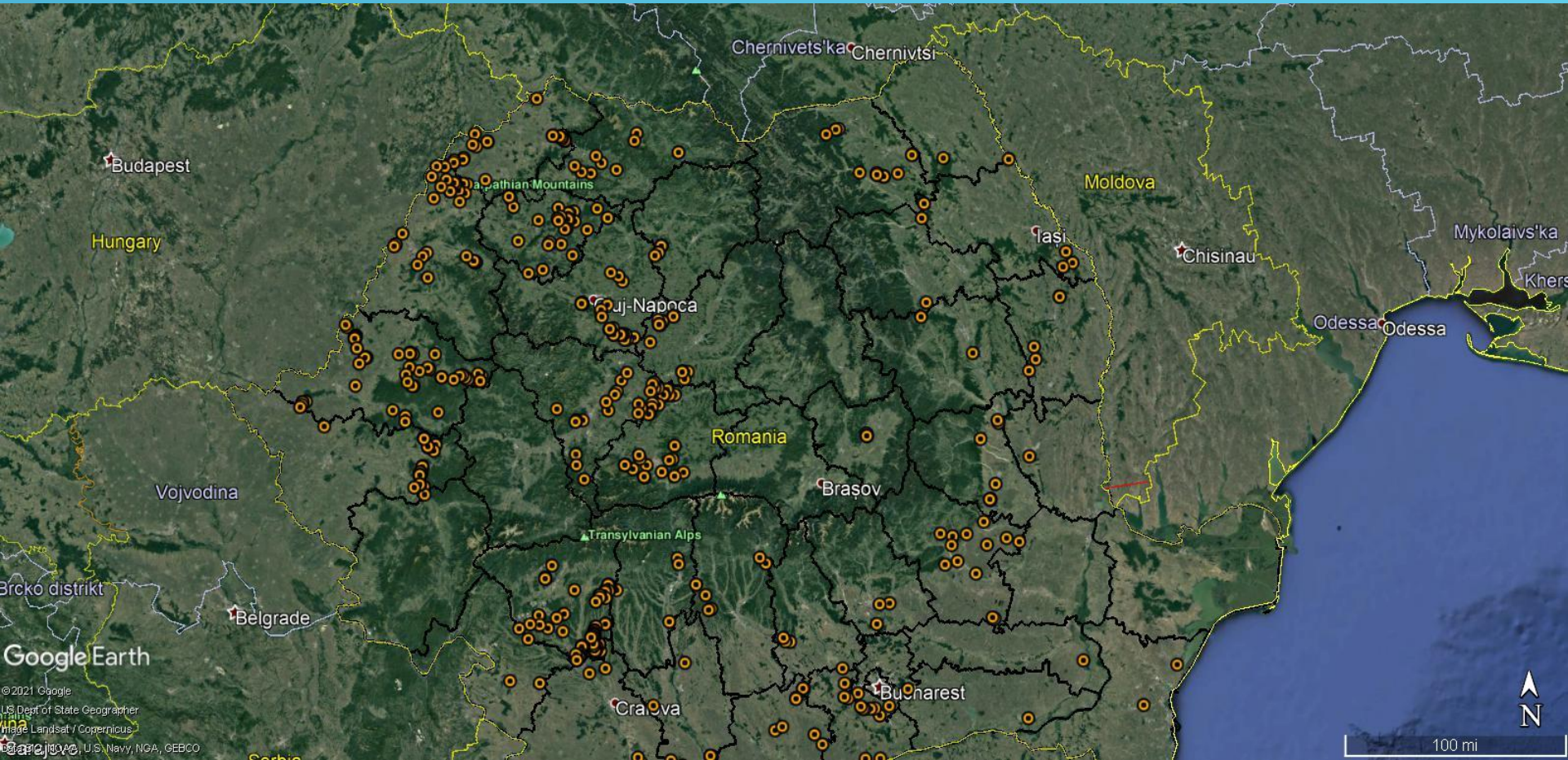


988 WILD BOAR CASES





ACTIVE ASF OUTBREAKS IN DOMESTIC PIGS

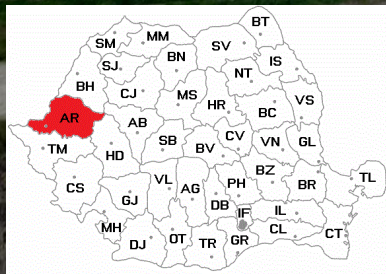




SINCE LAST SCOPAFF

ADNS no. 2021/259

On 06.03.2021, ASF was confirmed in a commercial pig reproduction holding with ~20.000 pigs.



The provisions of Directive 2002/60 / EC on the control of ASF in restricted areas are being applied.

The epidemiological investigation is ongoing.





The National Sanitary Veterinary and Food Safety Authority of Romania

INFORMATION REGARDING THE USE OF DEROGATION OF REMOVAL OF PIGS FROM A HOLDING WITHIN THE RESTRICTION ZONE - PROVISIONS FORESEEN IN ART. 11.2(C) OF DIRECTIVE 2002/60/EC

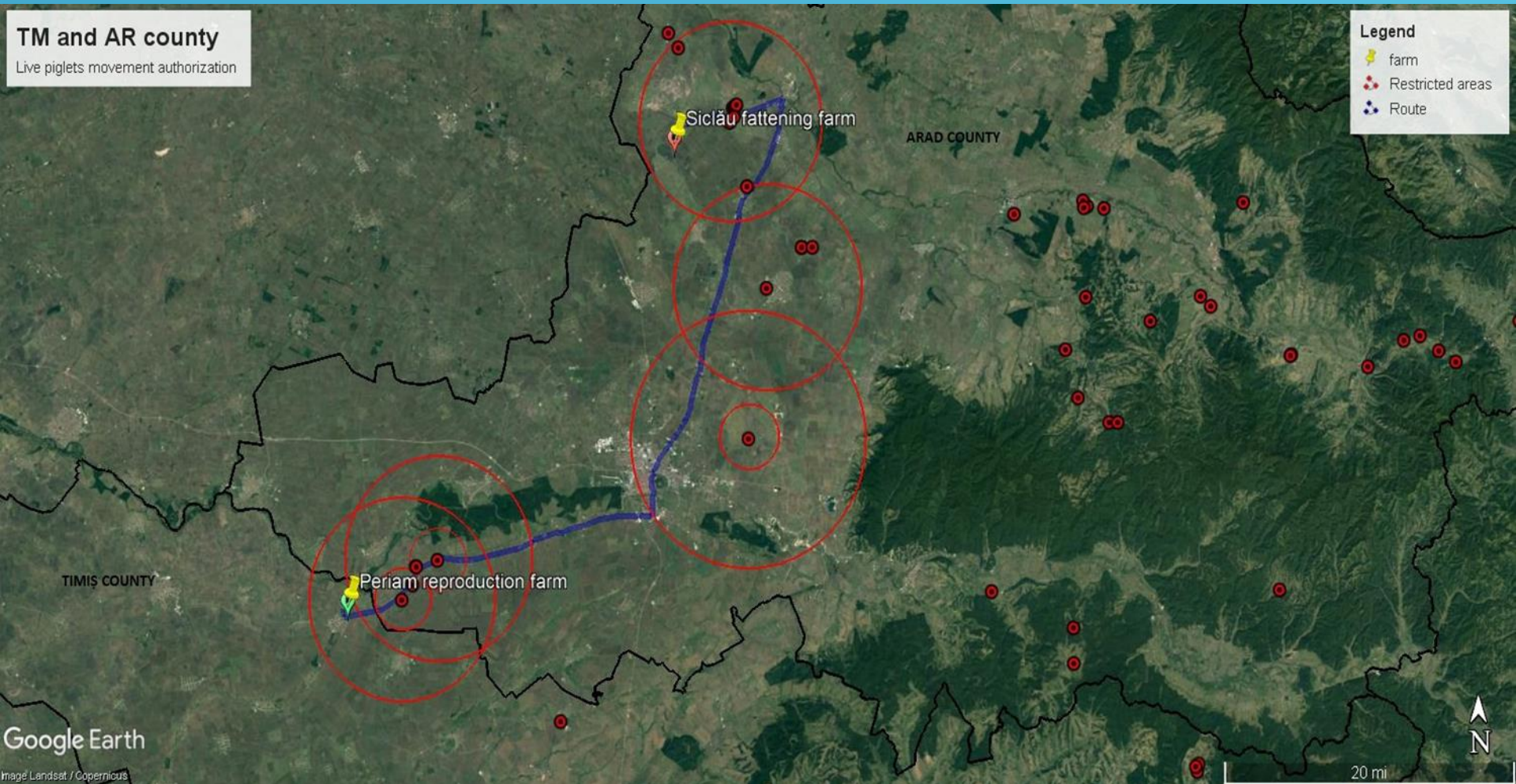
Due to the epidemiological situation of ASF in Romania, in some areas where commercial farms are located, several outbreaks have been confirmed in backyards, leading to movement restrictions of pigs because of successive ASF outbreaks. Thus, the animal welfare is at risk: high density, high temperatures, behavioral disorders like otophagy, tail biting, etc.

Motivated by the welfare conditions, two reproduction farms are requesting the approval for the movement of live pigs to other premises located in areas with the similar epidemiological situation, as laid down in the Art. 11.2(c) of Directive 2002/60/EC.

NVFSAs will assess the risks derived from authorising such movements and intends to grant these derogations, if the assessment indicates that the risk of spreading ASF is negligible.

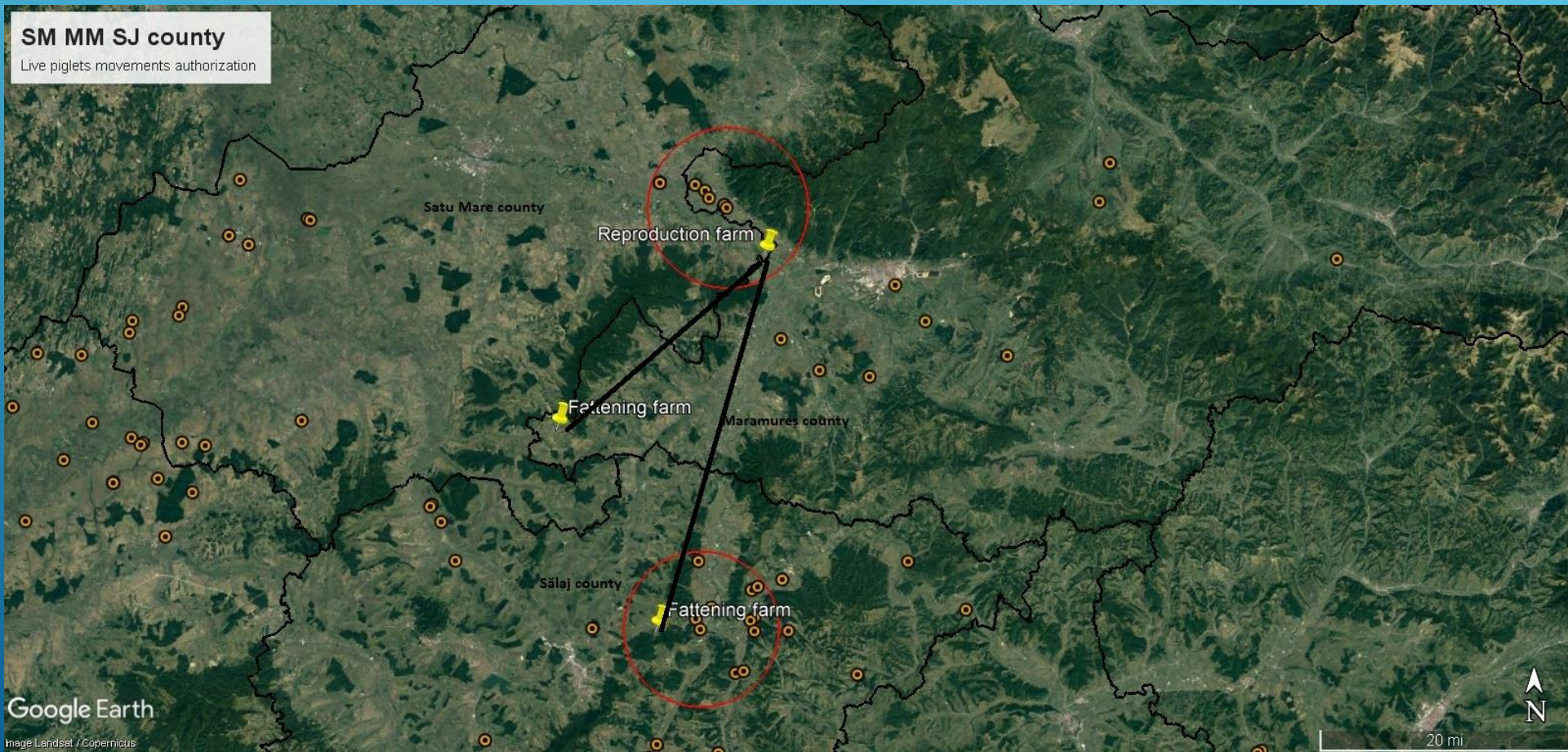
1. TM to AR county

The breeding farm(37.494 pigs) from Timiș county is under movement restriction from 22.02.21, following the cascade outbreaks, the last one being confirmed on 11.03.21.



1. SM to MM and SJ counties

The breeding farm (3320 pigs) from Satu MAARE county is under movement restriction from 26.01.21, following the cascade outbreaks.





NATIONAL ACTION PLAN FOR THE SURVEILLANCE, PREVENTION AND CONTROL OF AFRICAN SWINE FEVER IN ROMANIA

- Following the EU VET mission in February 2020, NSVFSA developed a draft Action Plan. At this point, the draft is in the final stage of elaboration;
- The Plan was negotiated with other institutions involved (Ministry of Agriculture and Rural Development, Ministry of Environment, Water and Forests);
- The Plan will be presented in order to be approved by the National Disease Control Center;
- The final form will be adopted by Parliament.

The National Sanitary Veterinary and Food Safety Authority of Romania



THANK YOU FOR YOUR ATTENTION!
QUESTIONS?

