

African swine fever in Bosnia and Herzegovina

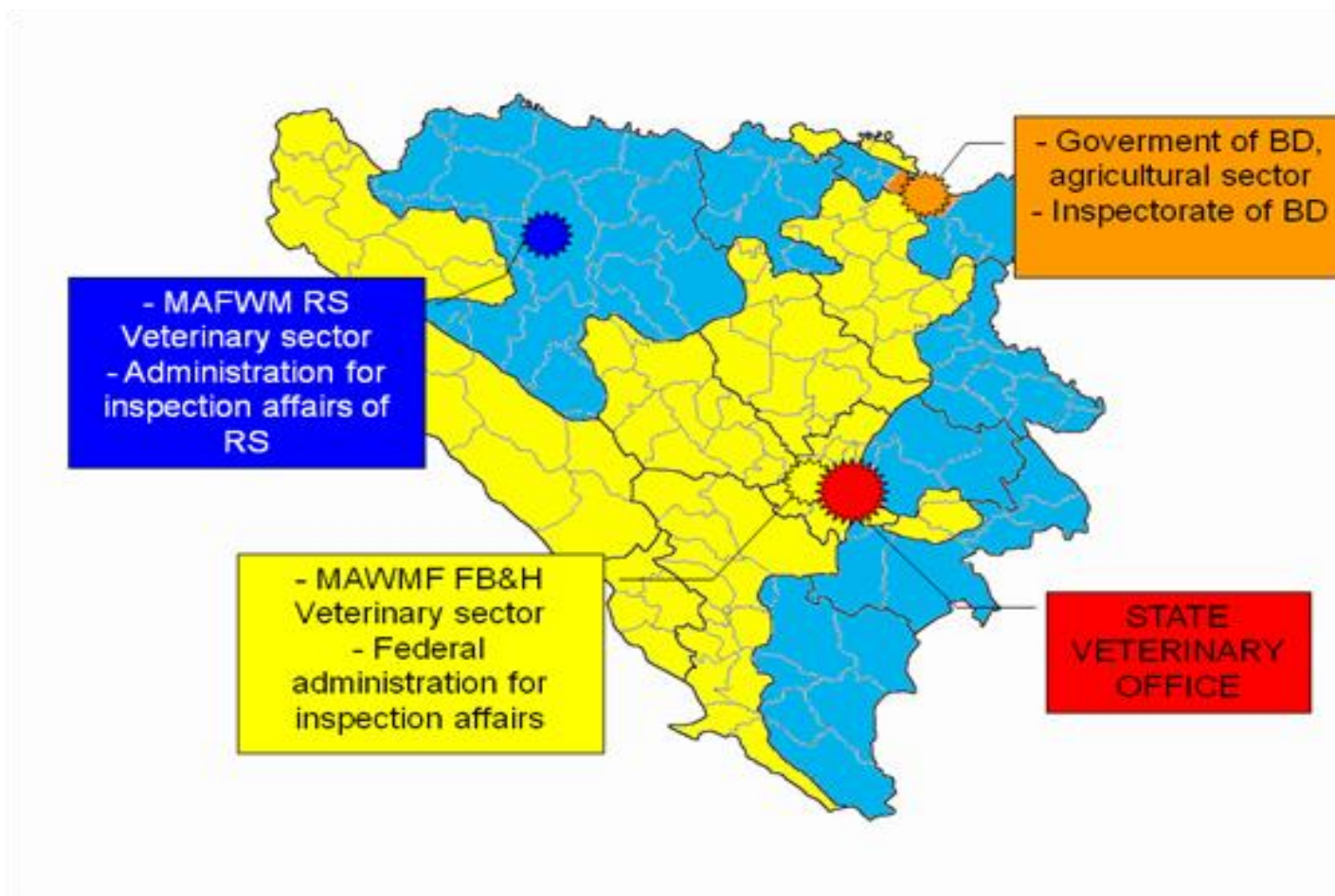
Saša Bošković, CVO

31.08.2023.

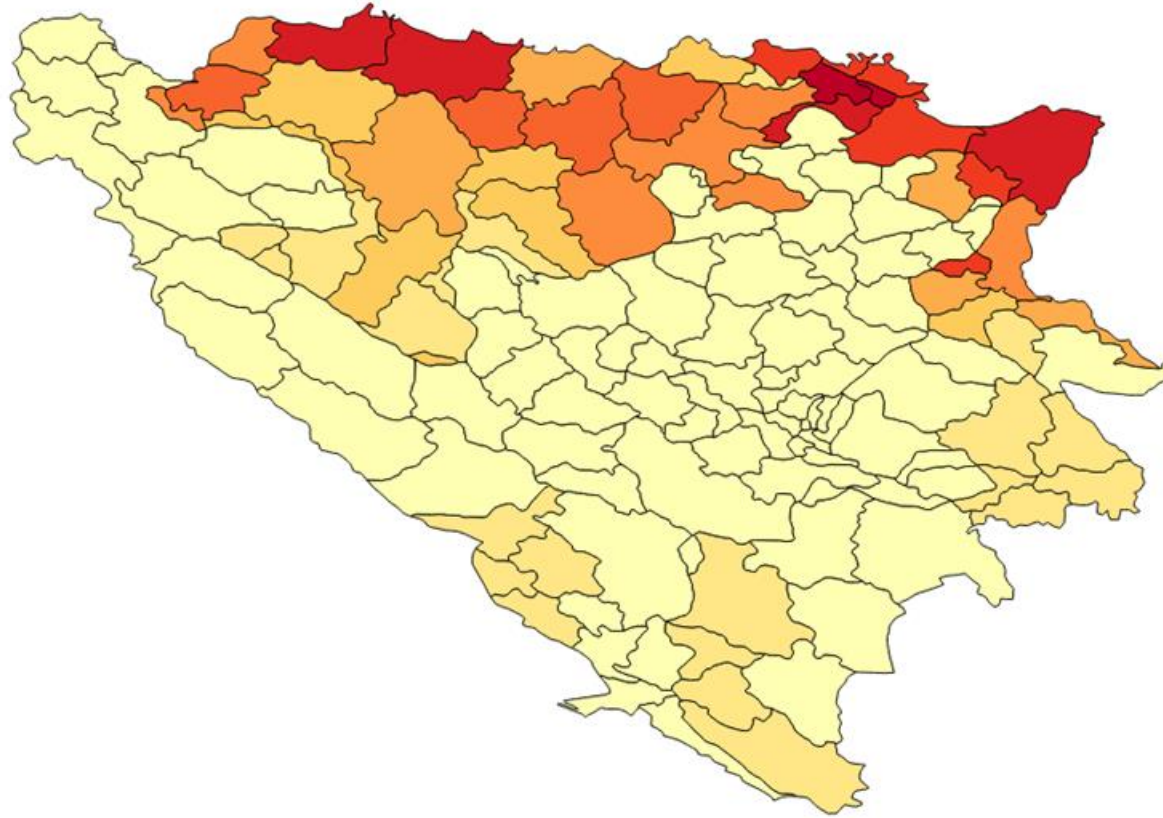


Bosnia and Herzegovina
Ministry of Foreign Trade and
Economic Relations
Veterinary Office of BiH

Veterinary service of Bosnia and Herzegovina



Domestic pig density map



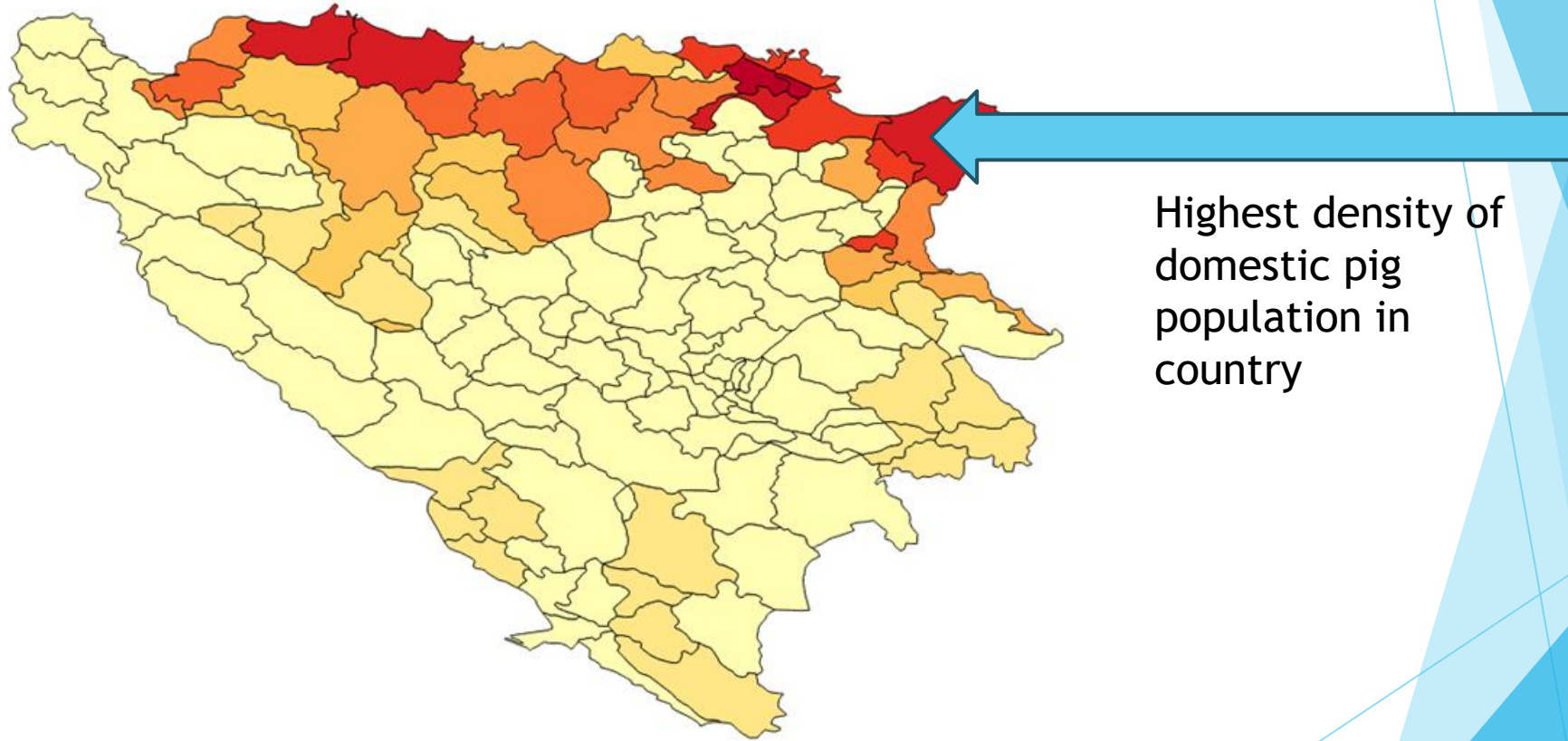
Veterinary diagnostic laboratories

- ▶ Two veterinary diagnostic laboratories are authorised to conduct tests for ASF:
 - ▶ Veterinary Institute of Republika Srpska „dr Vaso Butozan“ in Banja Luka
 - ▶ Veterinary Faculty in Sarajevo
- ▶ There is no dedicated reference laboratory for ASF in Bosnia and Herzegovina

First case of ASF

- ▶ First case of ASF was confirmed on 22 June 2023 on one backyard pig farm in municipality of Bijeljina
- ▶ Disease was confirmed by RT-PCR by the Veterinary Institute of Republika Srpska in Banja Luka, and later confirmed by EURL in Spain
- ▶ First case of ASF in wild boar was confirmed on 14 July 2023 in Brčko District

Location of first case



Confirmed outbreaks of domestic pigs until 28.08.2023.

	Number of outbreaks	Number of euthanised and dead pigs
Republika Srpska	883	38.303
Federation of B&H	70	439
Brčko District of B&H	185	5.700
Total (Bosnia and Herzegovina)	1.138	44.442

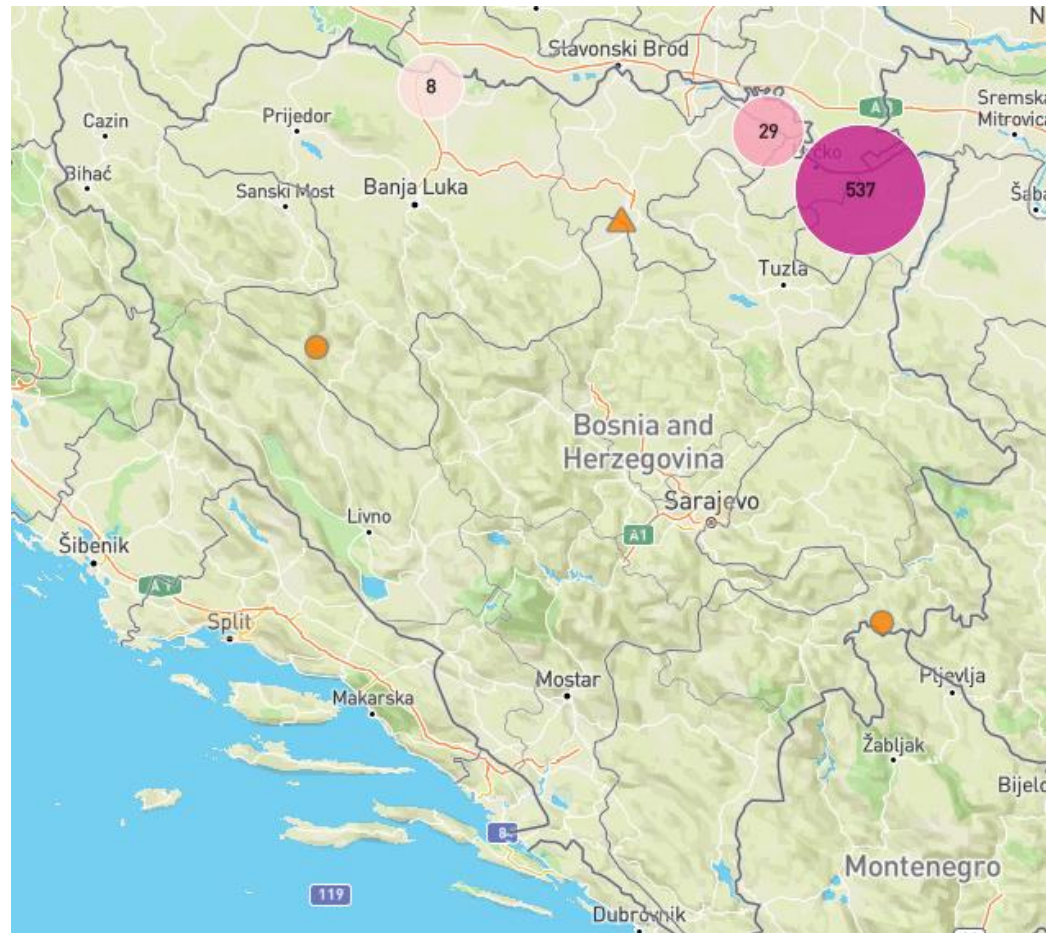


Confirmed cases in wild boar

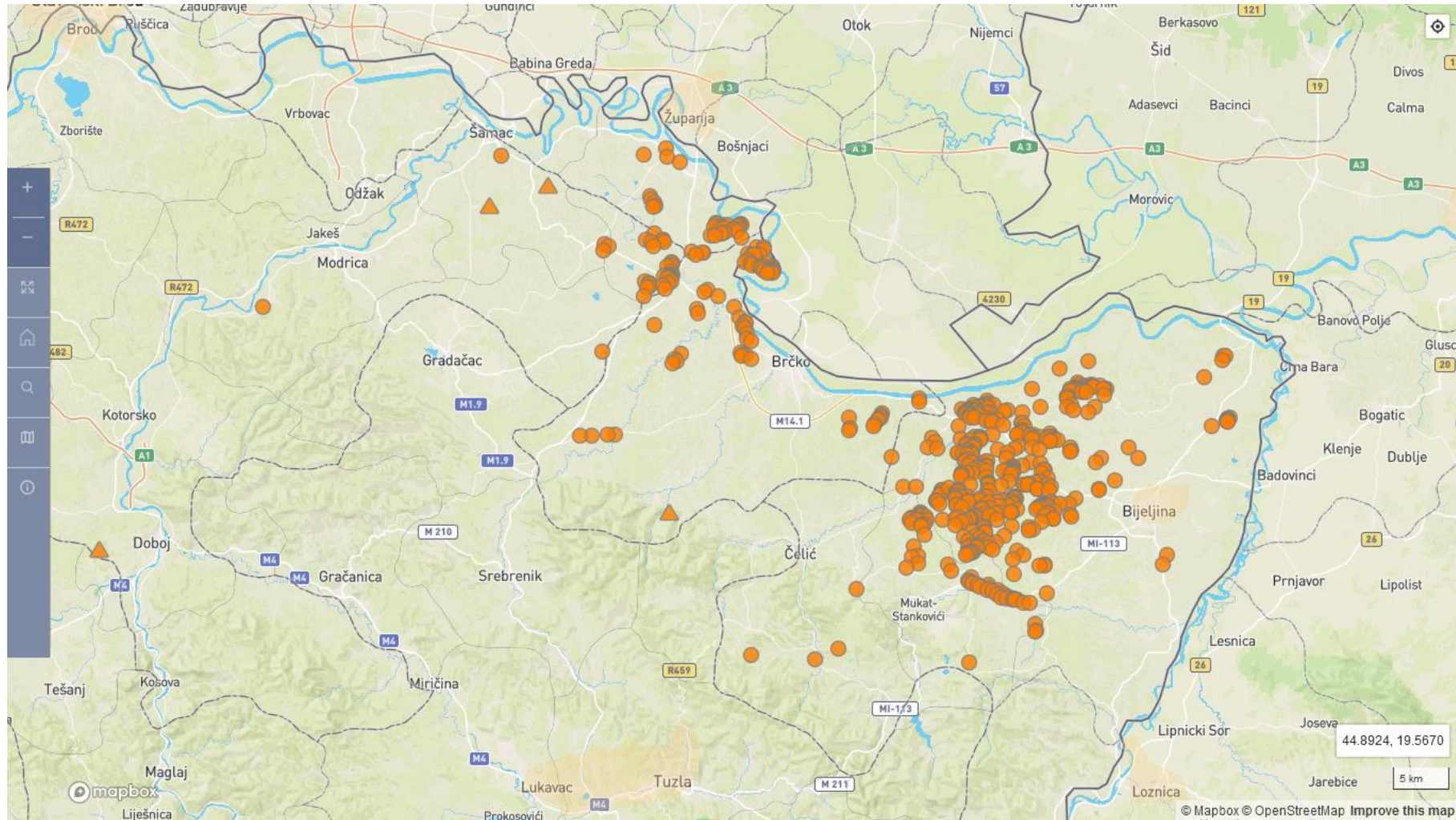
	Positive wild boars
Republika Sprska	6
Federation of B&H	0
Brčko District of B&H	1
Total (Bosnia and Herzegovina)	7



Map of outbreaks (overall in country)



Map of outrbeaks (NE part of country)



International cooperation

- ▶ GF-TADs expert mission was held in period 12-14.07.2023.
- ▶ On 27.07.2023. in Brčko, trilateral meeting was organised with CVOs of Bosnia and Herzegovina, Croatia and Serbia with ASF situation in the region as main topic of this meeting.
- ▶ Video conference on ASF topic, with representatives of PR China was organised on 16.08.2023. Also PR China will support Bosnia and Herzegovina with donation of laboratory material and equipment.
- ▶ Austrian competent authority (AGES) will provide also donation of equipment and material for ASF combat to B&H authorities.

Thank you for attention!

The background features abstract, overlapping geometric shapes in various shades of blue, ranging from light sky blue to deep navy blue. These shapes are primarily located on the right side of the frame, creating a modern, layered effect against the white background.