

Information about outbreak of Sheep & Goat Poxvirus in Spain

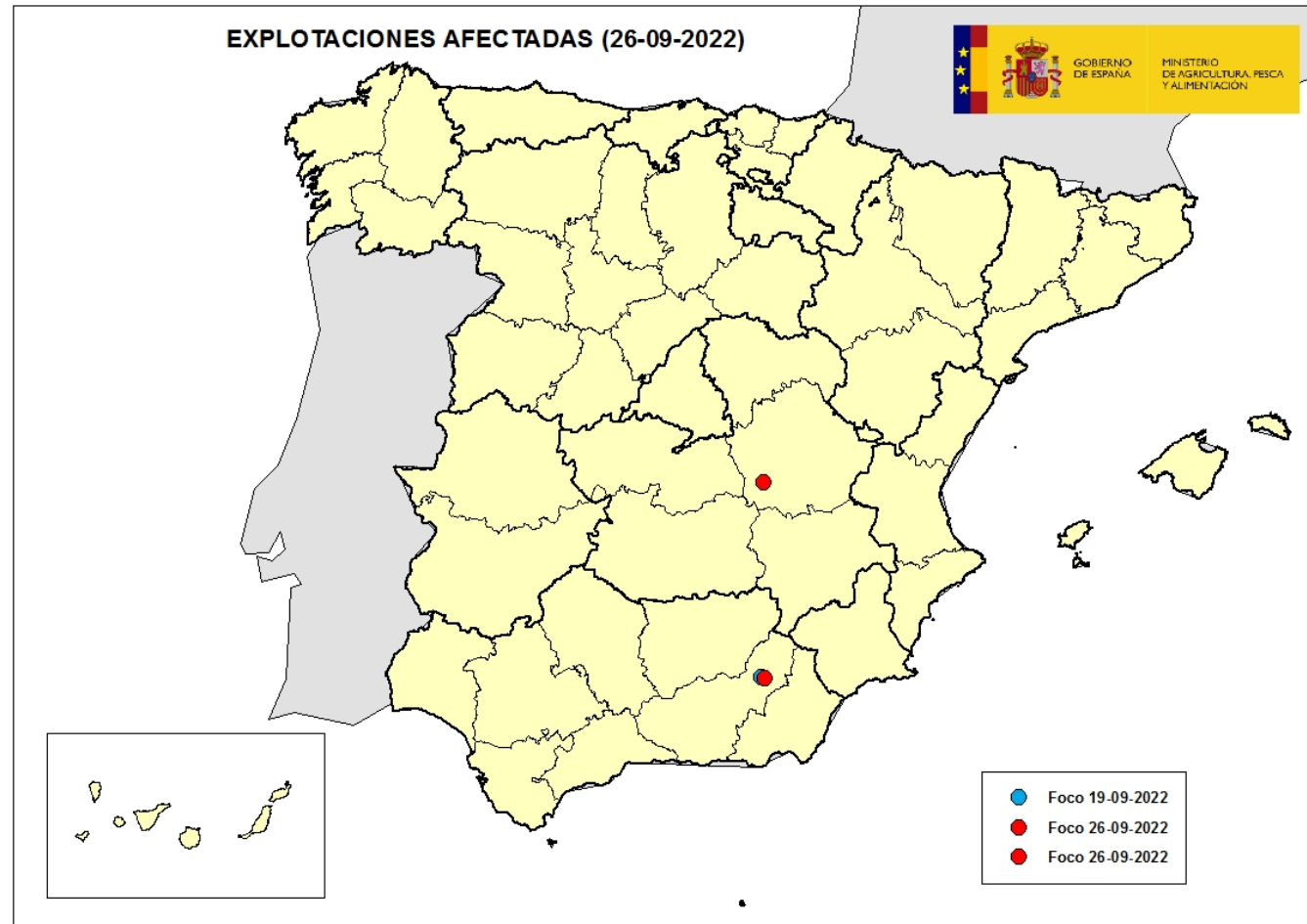


27/09/2022

PAFF Committee

Situation of SPPV in Spain up to date

- **Detection of SPV in Spain** after more than 50 years since eradication.
- **At the moment 4 confirmed outbreaks:** one in Municipality Benamaurel (Granada; 2022/1), one in Cúllar (Granada; 2022/2) and two outbreaks in Villaescusa de Haro (Cuenca; 2022/3 and 2022/4).



Outbreak 2022/1: Chronology and description of the outbreak

- **15th September 2022:** MAPA receives from OVS of Andalucía (south Spain) a communication of the detection of unusual skin lesions on a sheep holding in the municipality of Benamaurel, in the province of Granada.
- **The lesions are compatible with Sheep and Goat Poxvirus (SP/GTPV) and the case is dealt with urgently.**
- **It is a breeding sheep holding for meat production** with a census of **314 sheep and 11 goats**. It is a holding with extensive production system where animals graze in own pastures.
- **On the 16th in the morning, before having the results and due to the seriousness of the suspicion, MAPA organized a meeting with all Regional OVS** to inform and highlight the importance of enhancing awareness and biosecurity in the whole country.



Map: location of the suspect farm in Granada

Outbreak 2022/1: Official visit and immediate measures during suspicion phase

- **Official visit of the OVS to the farm on Sept 15th**, with detection of diverse skin lesions in 50 clinically affected sheep, including 30 dead animals in recent days.
- **Official samples are sent urgently to the NRL** (Central Veterinary Laboratory of MAPA, in Algete, Madrid).
- **Official immobilization** of the suspect farm and two other close-by farms, one goat farm (40m) and a lamb assembly centre (200m), due to the proximity to the suspect farm, until visited, sampled and confirmed negative.
- **Immediate traceability of risk movements from suspect farm, the last registered movement on 10th of June 2022** to a fattening farm in **Baza, Granada**. This holding has been **investigated by OVS without detection of symptoms or clinical lesions**.
- **Traceability of inward/outward movements of the lamb assembly holding**. All identified risk-contacts holdings are immobilized immediately until official investigation of each of them is carried out.

Outbreak 2022/1: Laboratory analysis and results

16/09/2022

First results from the NRL Algete

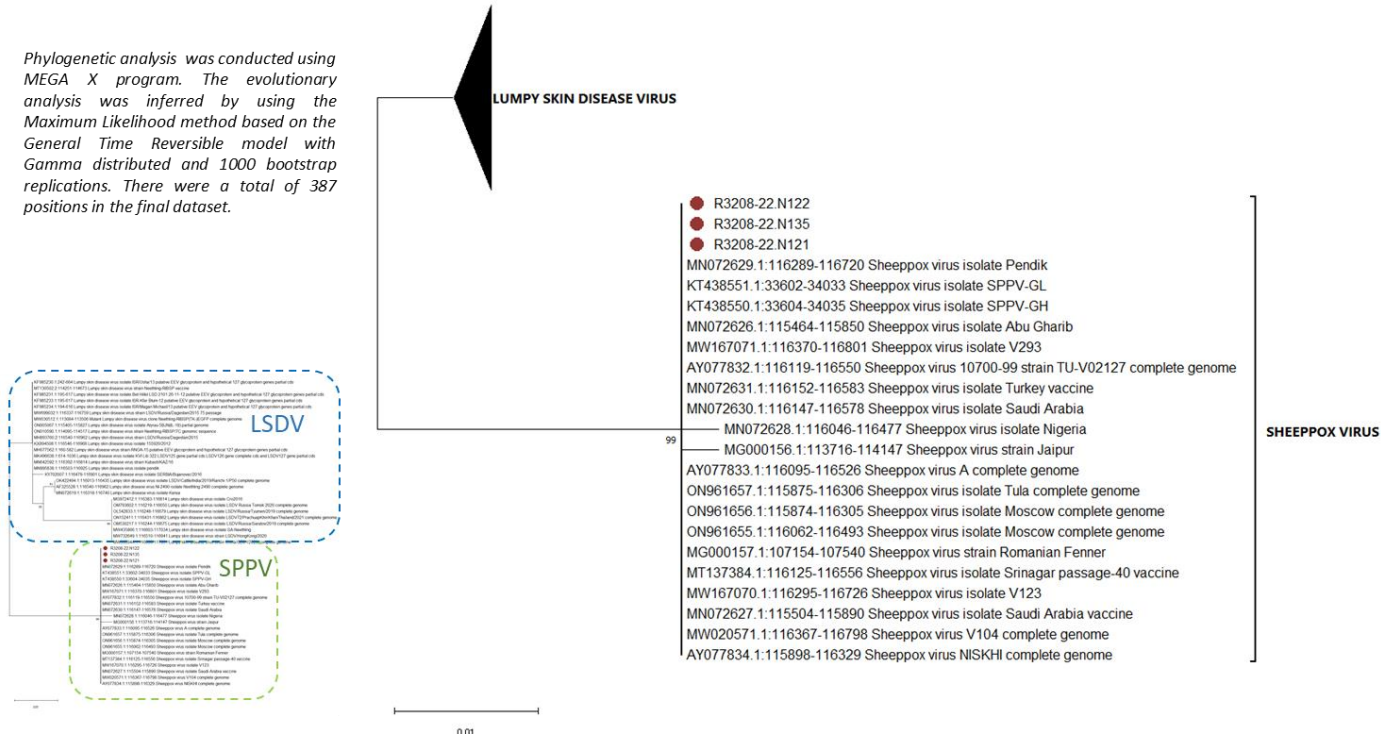
Positive results to generic RT-PCR, able to detect SP/GTPV, in 27,8% samples of whole blood (27/60) and 100% samples of tissues (27/27).

Positive results to ELISA in 42% serum samples (24/60 serums).

| TYPE OF SAMPLE | METHOD | Nº ANALYSED | POSITIVE RESULT | NEGATIVE RESULT | INCONCLUSIVE RESULT |
|----------------|-----------------------|-------------|-----------------|-----------------|---------------------|
| SERUM | drELISA | 60 | 24 | 36 | 0 |
| BLOOD EDTA | qPCR (Bowden 2008) | 60 | 13 | 33 | 14 |
| SKIN LESION | qPCR (Bowden 2008) | 27 | 27 | 0 | 0 |

Outbreak 2022/1: Laboratory analysis and results

Phylogenetic analysis was conducted using MEGA X program. The evolutionary analysis was inferred by using the Maximum Likelihood method based on the General Time Reversible model with Gamma distributed and 1000 bootstrap replications. There were a total of 387 positions in the final dataset.

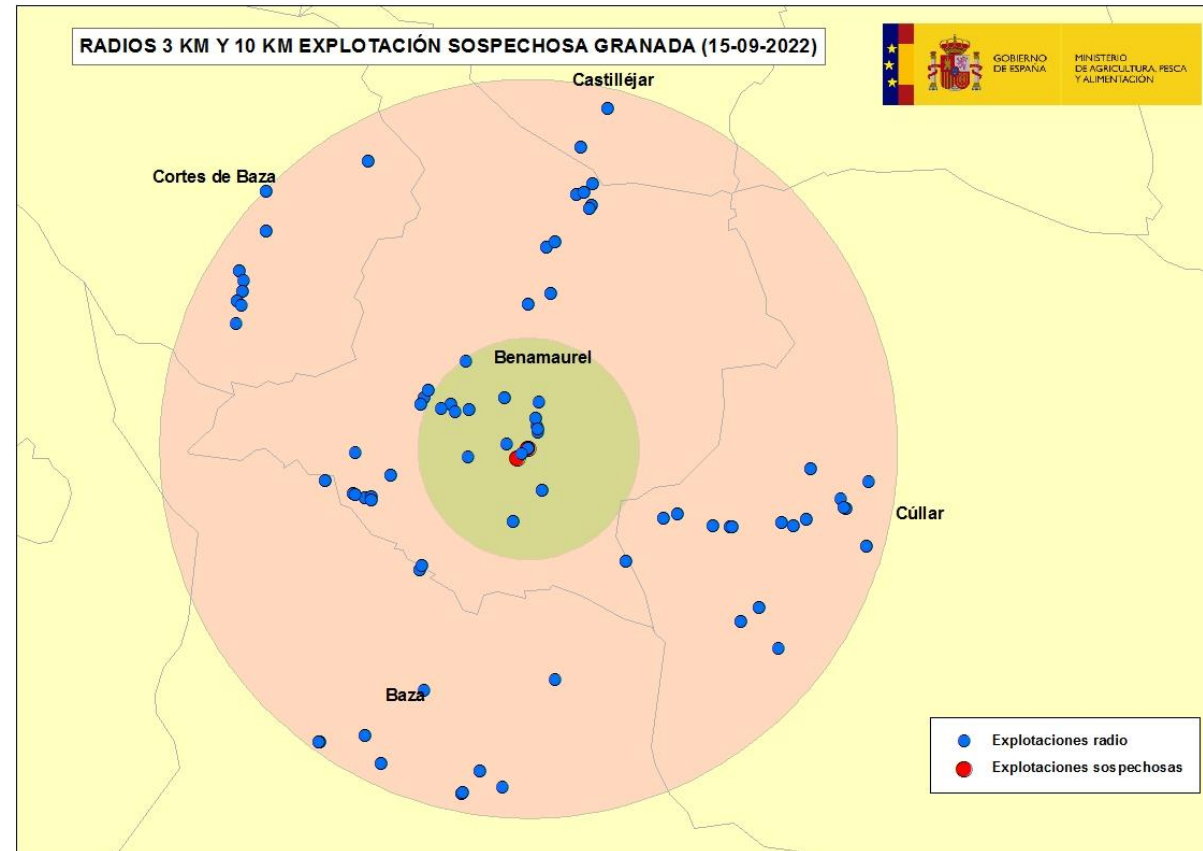


- 16/09/2022: identification by specific PCR of sheep pox virus strain. On 19/09/22, sequencing analysis determines it is a field strain (not vaccine strain).
- 19/09/2022: notification of the outbreak by CA of Andalucía via RASVE (national database) to central level and from central level to ADIS (EU) and WAHIS (WOAH).
- Samples are sent to EURL (Sciensano) for sequencing.

Outbreak 2022/ 1: Control measures on the affected farm

Commission Delegated Regulation (EU) 2020/687:

- **In-site culling** of the total census of the farm. Finished on the 20th September.
- **Safe disposal of carcasses** in the closest authorized ABP- plant under canalization procedure.
- **Withdrawal of risk products** (bedding, manure and feed).
- **Official preliminary cleaning and disinfection, to be finished on September 23rd.**
- **Adoption of Restricted Zone (RZ):** PZ (3km; 20 farms) and SZ (10km; 61 farms). Total susceptible population: 13.161 animals.
- **Official investigation of 65 farms located outside the RZ but considered of risk** due to the existence of risk movements to the close-by lamb assembly center.



Results of epi investigation by OVS of Andalucía in relation to outbreak 2022/1 (up to 26/09/2022)

PROTECTION ZONE (3km)

- All 20 farms visited (100%)
- 18 with favourable results, no clinical findings.
- 2 farms with detection of skin lesions, both of them already confirmed as negative by NRL.

SURVEILLANCE ZONE (10km)

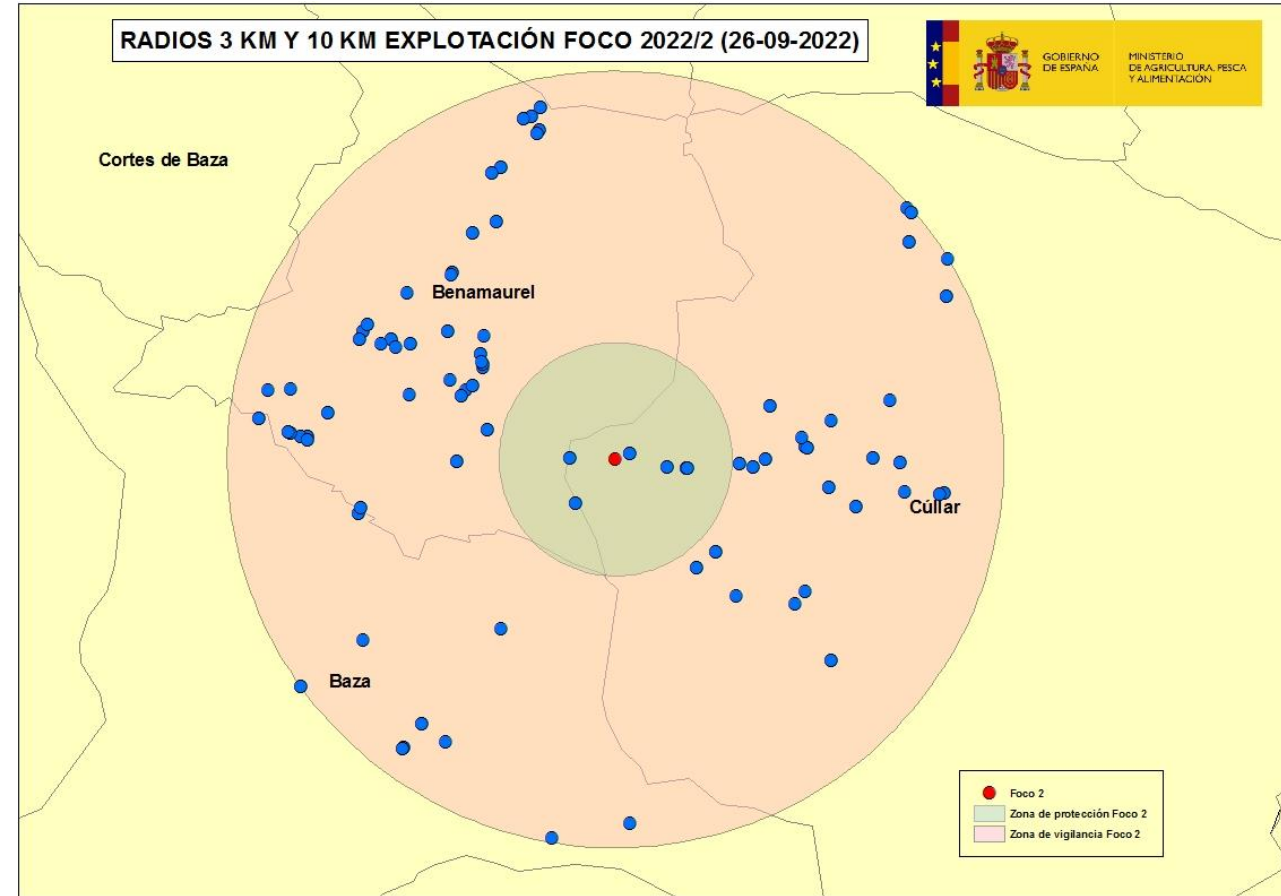
- All 61 farms visited (100%).
- 60 with favourable results, no clinical findings.
- 1 with detection of skin lesions in one only sheep, confirmed positive by PCR in the NRL, it is the outbreak 2022/2 (next slide)

OUTSIDE THE RESTRICTED ZONE (ASSEMBLY CENTRE CONTACTS)

- All 65 farms visited (100%).
- 64 with favourable results, no clinical findings.
- 1 with detection of skin lesions, confirmed negative by PCR in the NRL.

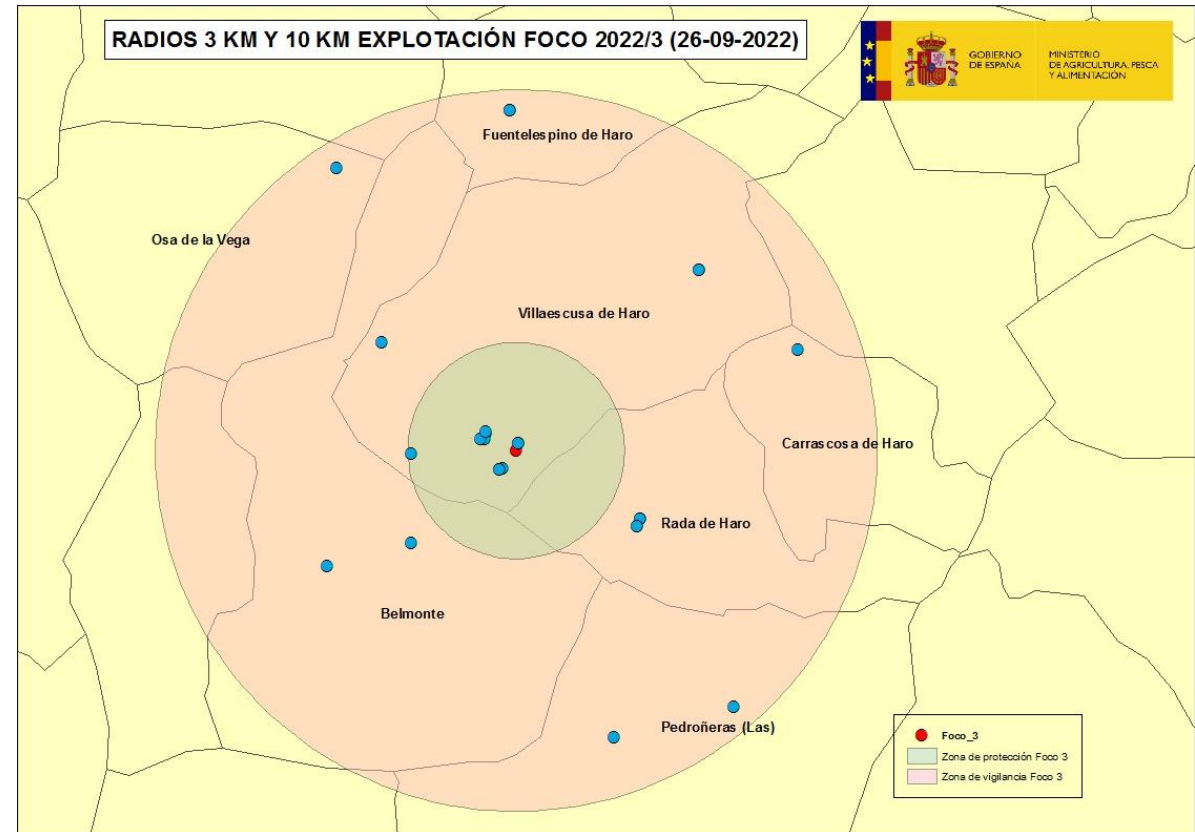
Outbreak 2022/2: Cúllar, Granada

- During epidemiological investigation within the RZ of outbreak 2022/1, compatible lesions are detected **in one single animal** in a Sheep holding **within the 10 km SZ** on **23rd September**.
- **Breeding holding for production of meat, with 170 sheep and 20 goats.**
- Official samples sent to NRL Algete, tested positive the same day, the 23rd in the evening.
- Adoption of the **same control measures** as for outbreak 2022/1.
- C&D operations to be finished on 28th September.
- Zoning: **6 farms in PZ** and **79 in SZ**, many of them already visited as they were included in the RZ of outbreak 2022/1



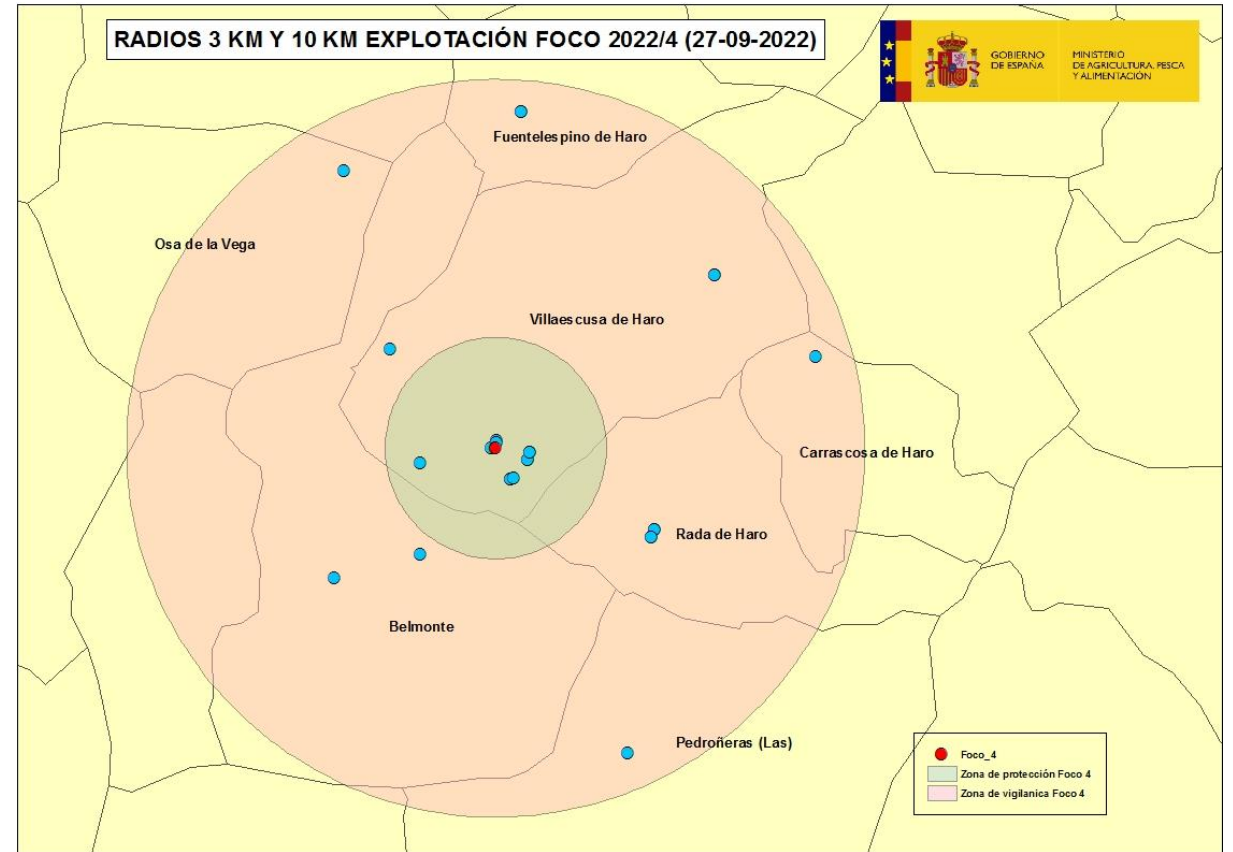
Outbreak 2022/3: Villaescusa de Haro, Cuenca

- On 23/09/2022, during epidemiological investigation due to movements from the assembly centre 200m away from outbreak 2022/1, compatible lesions and symptoms are detected in **one single sheep in a farm**.
- **It is an assembly centre** with a census of **1.070 sheep & 14 goats** in the municipality of Villaescusa de Haro, in Cuenca province, Castilla – La Mancha.
- Official samples sent immediately to LCV Algete resulting positive on the same day, 23rd in the evening.
- Adoption of the **same control measures** as for outbreak 2022/1 & 2.
- C&D operations to be finished on 7th October.
- Zoning: **8 farms in PZ** and **11 in SZ**. **Total susceptible population: 42.620 animals**.



Outbreak 2022/4: Villaescusa de Haro, Cuenca

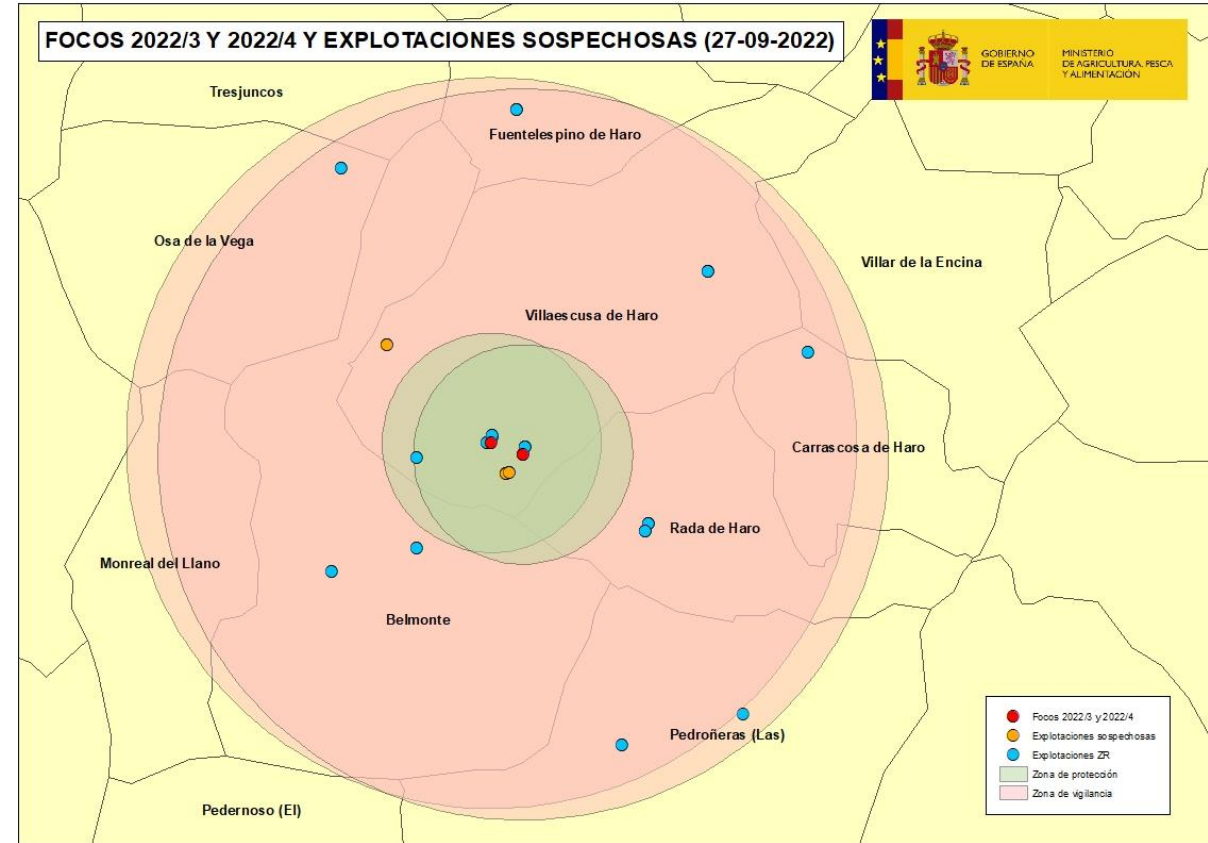
- During epidemiological investigation in the zone of Villaescusa de Haro, **compatible lesions and symptoms are detected in another holding in the same Municipality and the same day, 23rd September, as outbreak 2022/3.**
- **Breeding holding for production of milk, with a census of 7.654 sheep.**
- Official samples sent to LCV Algete, resulting positive.
- Adoption of the **same control measures** as for the other outbreaks.
- C&D operations to be finished on the 7th of October.
- Zoning: **9 farms in PZ** and **10 in SZ.**



New suspect cases in Villaescusa de Haro, Cuenca



- At the moment, there are **two confirmed outbreaks** in the municipality of V. de Haro (Cuenca province): outbreaks 2022/3 & 2022/4.
- **We have known about another three suspect farms** in the same municipality detected in the frame of the OVS investigation undergoing.
- Two are **fattening holdings** (with 227 and 1.877 animals) and the other is an **assembly centre** with 5.075 animals (total animals in the three new suspect farms is **7.179 animals**).
- These three suspect holdings and the outbreak 2022/3 are owned by the **same company sharing risk pathways between them** → we can consider them one single **epidemiological unit**.
- Samples from the three suspects farms have already been sent to LCV Algete, results are pending.



Comparison of Restricted Zones of Granada and Cuenca

- In the case of the **outbreaks of Granada Province (2022/1 & 2)** the RZ includes **more holdings and smaller in size**, with a **total susceptible population of 13.161 animals**. Most of these holdings are breeding holdings for **production of meat**.
- In the case of the **outbreaks of Cuenca Province (2022/3 & 4)** the RZ includes **less holdings and larger in size**, with a total susceptible population **much higher 42.620 animals**, being many of them breeding holdings for **production of milk**.

Measures implemented in the Restricted Zone

Delegated Regulation (EU) 202/687 of the Commission:

- **Census of all farms and susceptible animals** (species, categories, number of animals/establishment).
- **Restriction and control of animal and risk products movements, including reproductive materials and ABP.**
- Prohibition of **fairs, markets, exhibitions** and other concentrations of livestock.
- **Enhanced biosecurity and passive surveillance.**

Conclusions

- **At the moment 4 PCR confirmed outbreaks of sheep pox virus and 3 more suspicious cases, in V. de Haro (Cuenca).**
- **Isolates sent to the EURL (Sciensano, Belgium).**
- **OVS of Andalucía and C. La Mancha are making a great effort visiting all the holdings located within the RZs (affected, suspect and risk-contact farms; >180 holdings) in a very short time.**
- **Origin of the virus remain unknown** at the moment, investigations keep ongoing.
- **Movement restrictions in the RZ:** very serious problem for holdings located within the RZ due to impossibility to stock daily fresh milk → EC doing its best to solve the problem as soon as possible.



**THANK YOU VERY MUCH
FOR YOUR ATTENTION**