



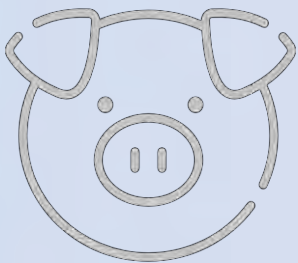
# African swine fever in Poland – update



**General Veterinary Inspectorate**  
**PAFF 10-11 February 2022**



## No outbreaks in pigs 2022



ASF outbreaks in pigs 2021

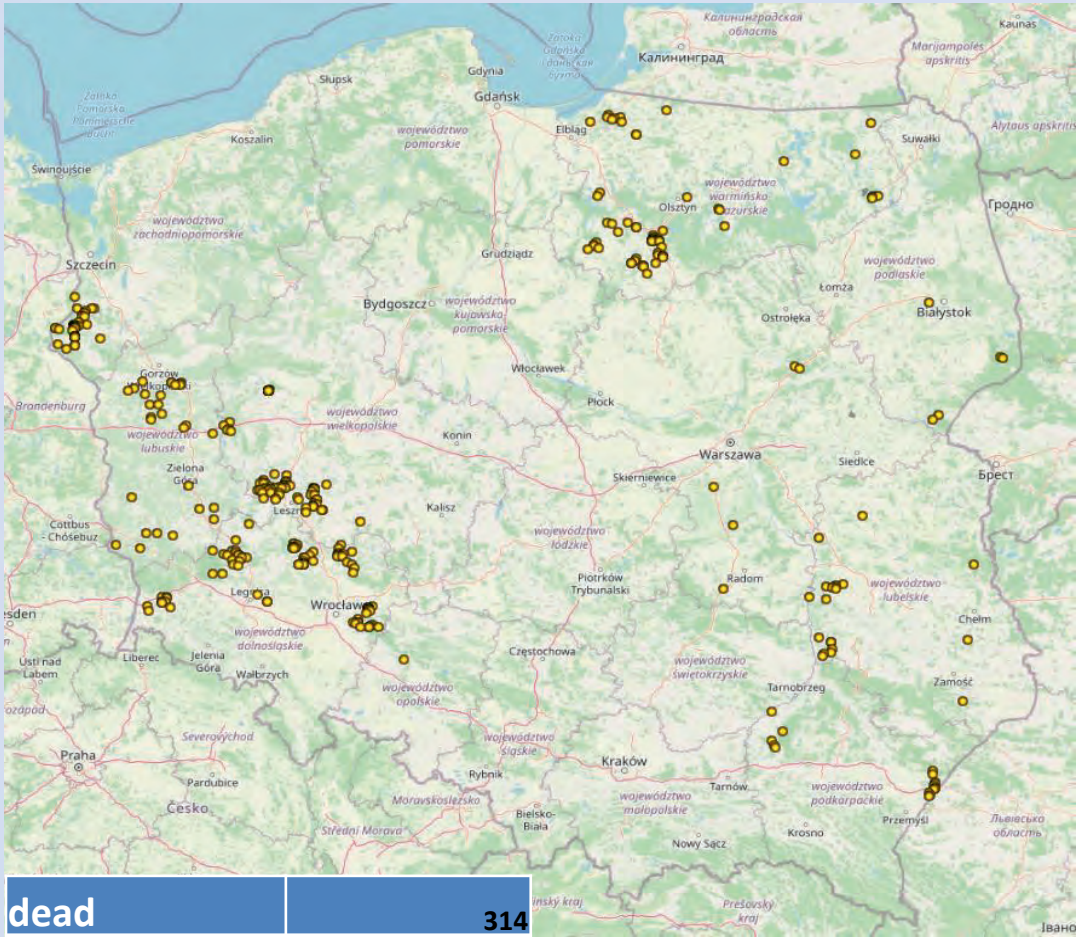
**124**

Last outbreak confirmed 17/12/2021



# ASF outbreaks in WB 2022 (09/02/2022)

**369 outbreaks in WB**



<b>dead</b>	<b>314</b>
<b>shot</b>	<b>144</b>
<b>killed in road accidents</b>	<b>4</b>
<b>euthanized</b>	<b>1</b>

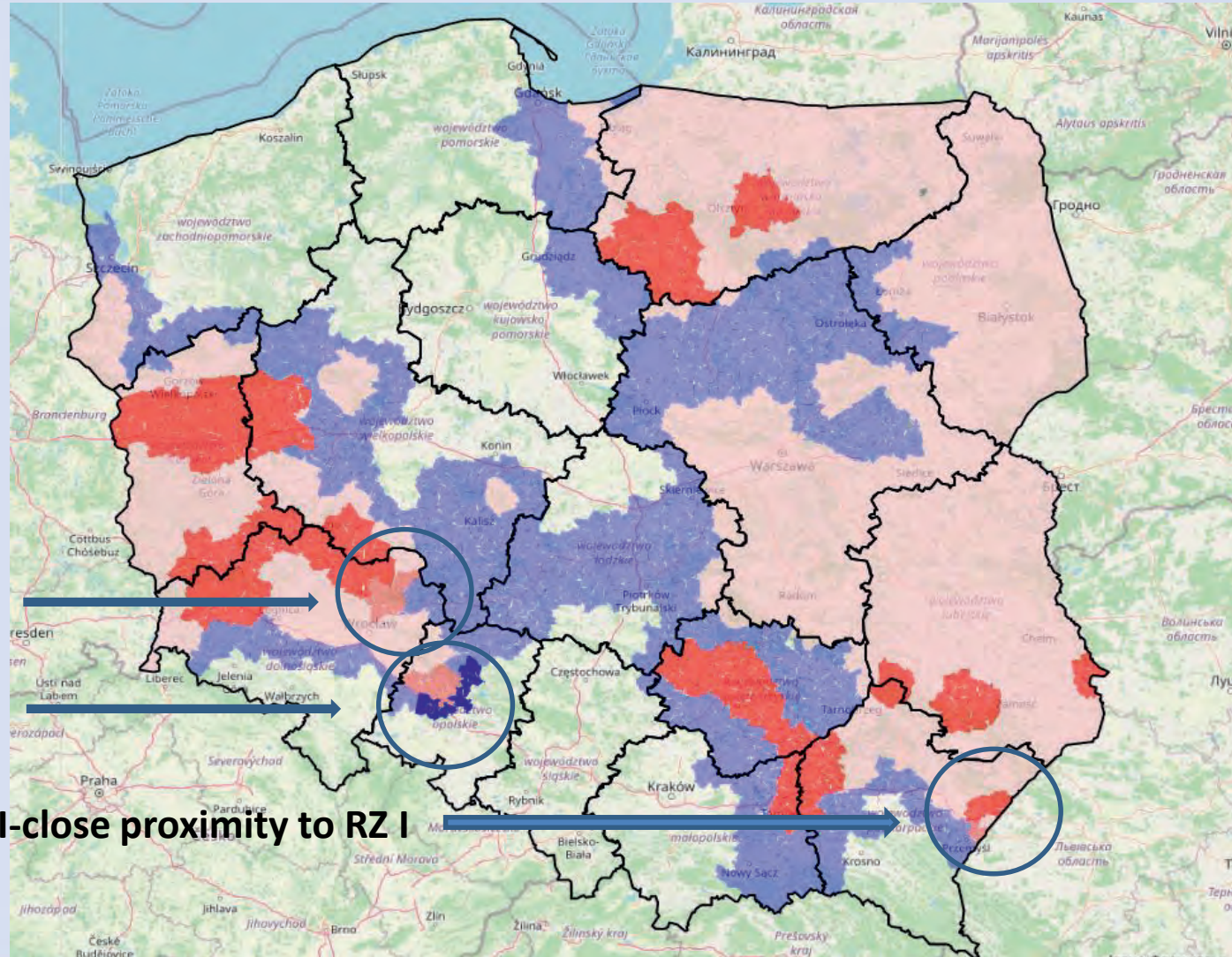
voivodeship	no. of outbreaks in WB	no. of WB positive
dolnośląskie	105	131
lubelskie	20	25
lubuskie	31	39
mazowieckie	5	5
opolskie	1	5
podkarpackie	16	26
podlaskie	5	5
warmińsko-mazurskie	65	80
wielkopolskie	75	88
zachodniopomorskie	46	59
<b>summary</b>	<b>369</b>	<b>463</b>



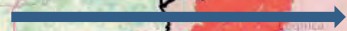
# Amendments of regionalisation



CIR 2022/136 of 31 Jan 2022



5 WB outbreaks in RZ I  
(4 shot, 1 found dead)



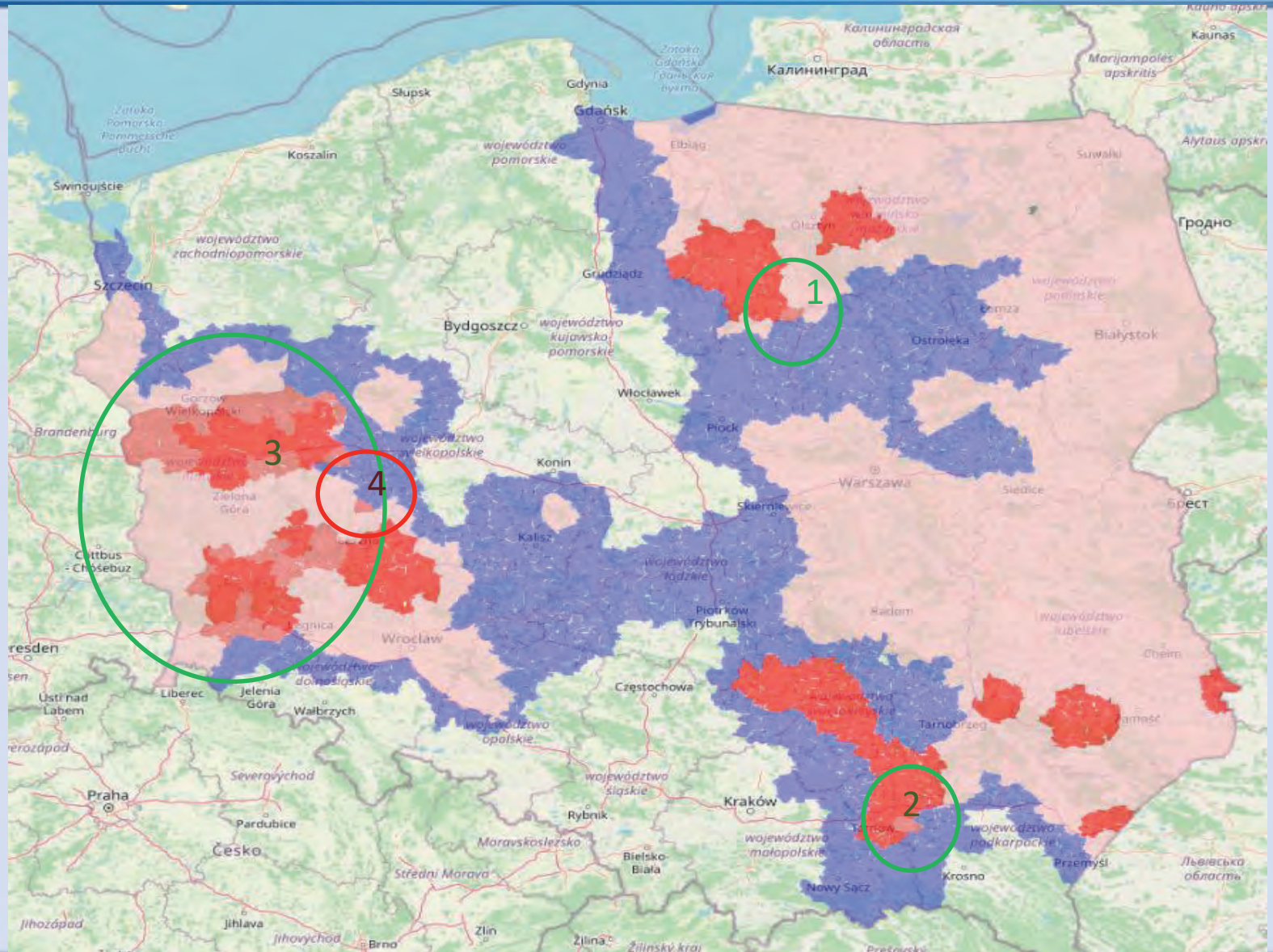
1 WB outbreak in RZ I  
(5 WB found dead)



outbreaks in WB in RZ II-close proximity to RZ I



# Amendments of regionalisation



# Amendments of regionalisation



## Reversion RZ III => RZ II

- 1 – 1 municipality in Warmińsko Mazurskie region
- 2 – 1 municipality in Podkarpackie region
- 3 – 13 municipalities in Dolnośląskie region
  - 18 municipalities in Lubuskie region
  - 8 municipalities in Wielkopolskie region

## Enlargement of RZ II

4 - 1 municipality in Wielkopolskie region => WB  
outbreaks in close proximity to RZ II



Thank you