



State
Veterinary
Administration

African swine fever in wild boars in the Czech Republic

Petr Šatrán, Brussels, SCoPAFF 13. 7. 2017

Passive surveillance

From 2014 passive surveillance in wild boars is performed

- all wild boars find death are tested for ASF and CSF

1. 1. 2014 - 15. 6. 2017								
Year	2014		2015		2016		2017	
Total Czech Republic	183	0	186	0	98	0	85	0

15. 6. – 11. 7. 2017

CZ - tested 66 / 25 positive

Zlín - tested 38 / 25 positive

Current situation (11. 7. 2017)

25 cases of African swine fever in wild boars

- The first case confirmed on 26.6.2017
- All cases confirmed in the National reference laboratory in the State Veterinary Institute in Jihlava
- All cases are from Region of Zlin, District of Zlín
 - Příluky: 5 cases
 - Hvozdná: 9 cases
 - Lužkovice: 6 cases
 - Kostelec u Zlína: 5 cases

First occurrence of ASF virus in wild board in the Czech Republic

- Date of finding: 21.6.2017
- Location of finding: Příluky u Zlína, GPS 49°13'44.303"N, 17°42'1.996"E
- Date of first laboratory result: 26.6.2017 (SVI Olomouc)
- Date of confirmation test result: 26.6.2017 (NRL SVI Jihlava)
- Report to ADNS: 27.6.2017, 13:44
- A photo of the place of first positive find



Second occurrence of ASF virus in wild board in the Czech Republic

- Date of finding: 22.6.2017
- Location of finding: Příluky u Zlína, GPS 49°13'48.476"N, 17°41'48.429"E
- Date of first laboratory result: 27.6.2017 (SVI Olomouc)
- Date of confirmation test result: 27.6.2017 (NRL SVI Jihlava)
- Report to ADNS: 27.6.2017, 13:48
- A photo of the place of second positive find

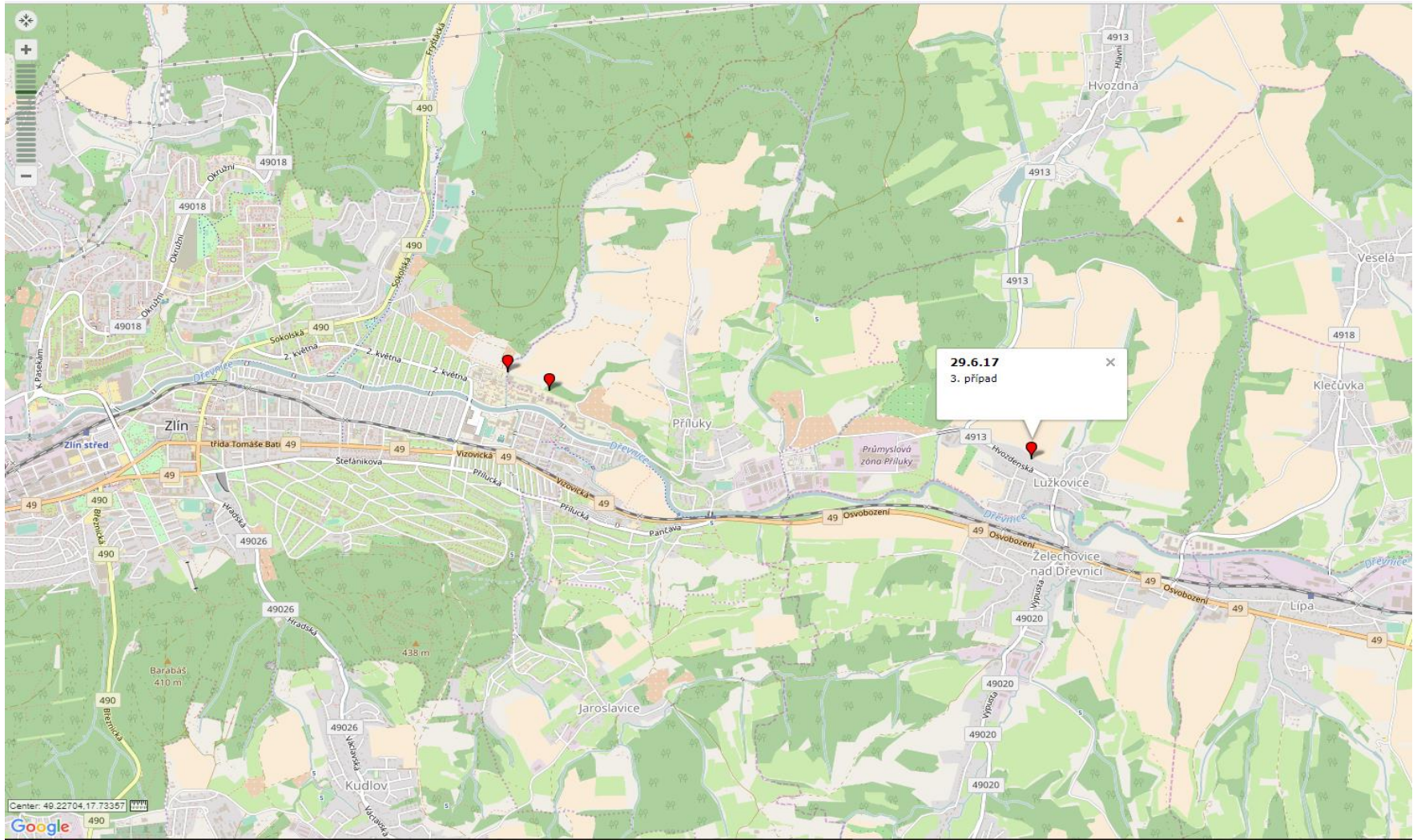


Third occurrence of ASF virus in wild boar in the Czech Republic

- Date of finding: 29.6.2017
- Location of finding: Lužkovice, GPS 49°13'28.642"N, 17°44'39.052"E
- Date of laboratory test result: 29.6.2017 (NRL SVI Jihlava)
- Report to ADNS: 30.6.2017, 7:32
- A photo of the place of third positive find



The place of finding of all three wild boars positive on ASF



Possible ways of disease introduction

Introduction by:

- ✓ wild boars - not probable (nearest reported cases of AMP about 400-500 km)
- ✓ human activities – probable (most of the dead positive wild boars found in inhabited areas)



Veterinary measures have been taken in accordance with the Council Directive 2002/60/EC:

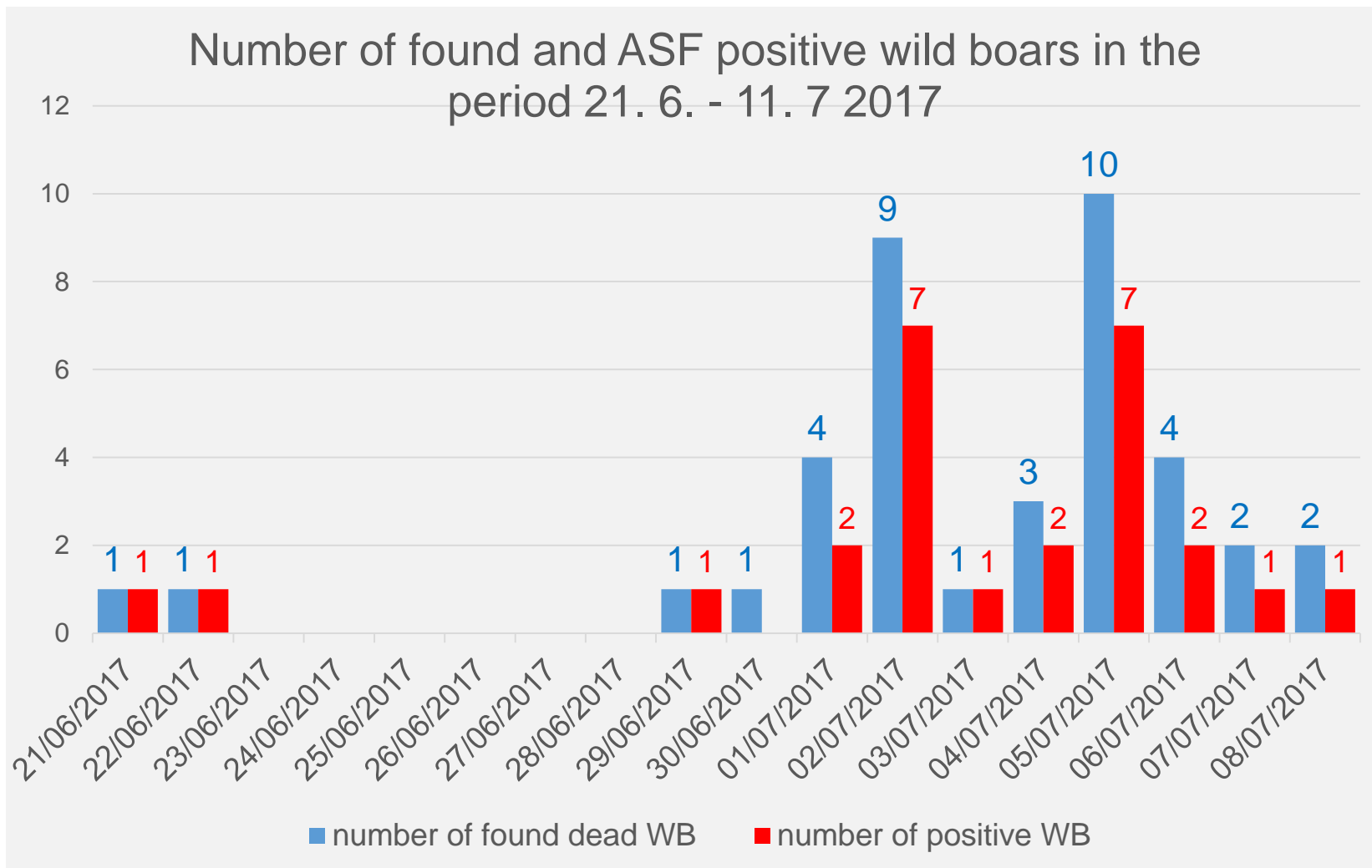
- Expert group has been established (on 28.6.2017)
- Infected area has been defined (on 27.6.2017)
- Veterinary measures have been established in line with CD 2002/60/EC, including suspension of hunting and a ban on feeding feral pigs (on 27.6.2017)
- Investigation of the epidemiological situation is carried out in the whole defined infected area (start on 27.6.2017), including an inspection of the surroundings of the place of finding of the wild boars positively tested on ASF
- The official list of all categories of domestic pigs in all holdings was ordered (on 27.6.2017)
- Veterinary measures have been taken in pig holdings in the defined infected area in accordance with Article 15 (2) (b)

Demarcation of the infected area

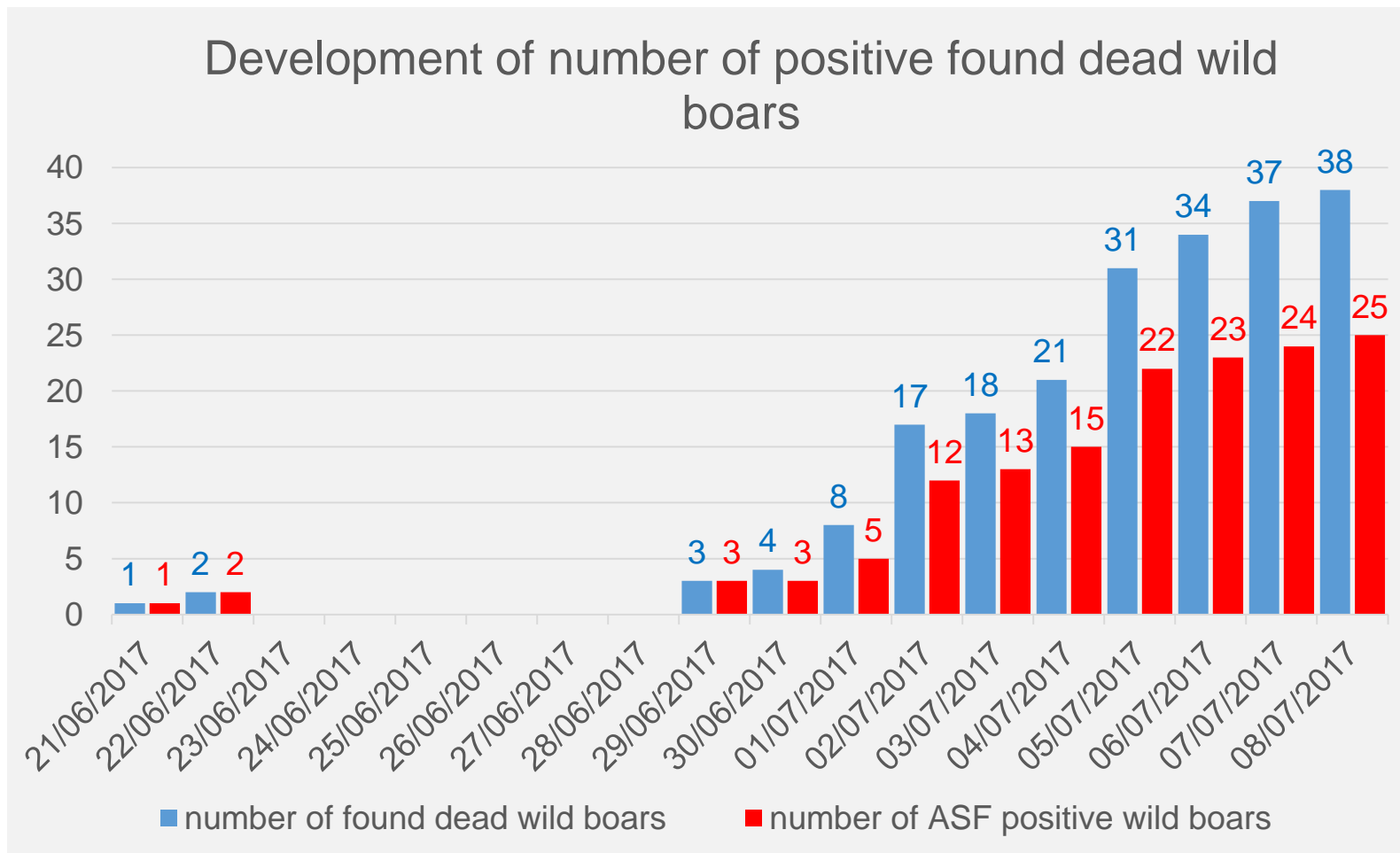
- ✓ In accordance with the Council Directive 2002/60/EC
- ✓ Whole district of Zlín is declared as an infected area (1 034 km²)



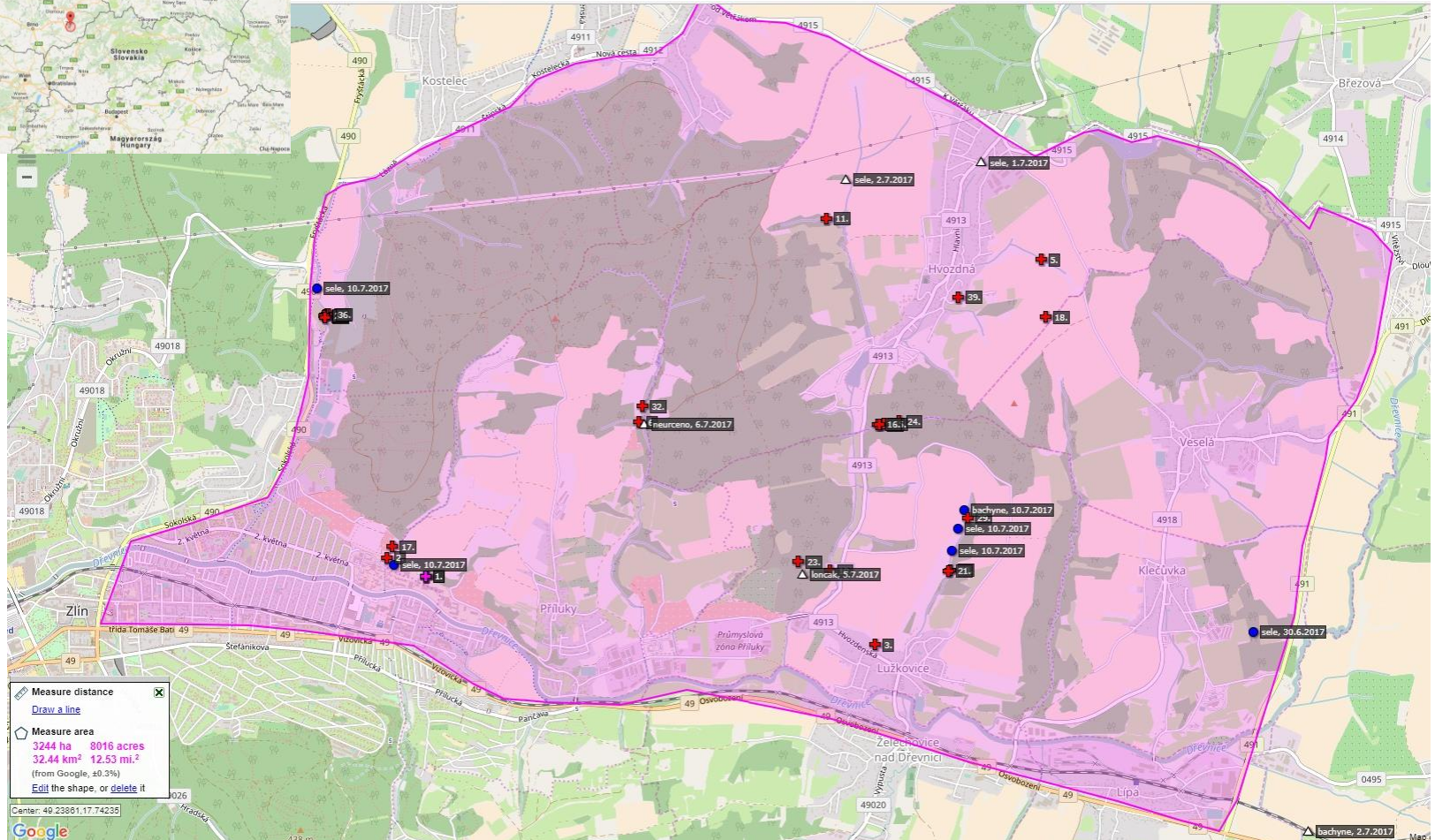
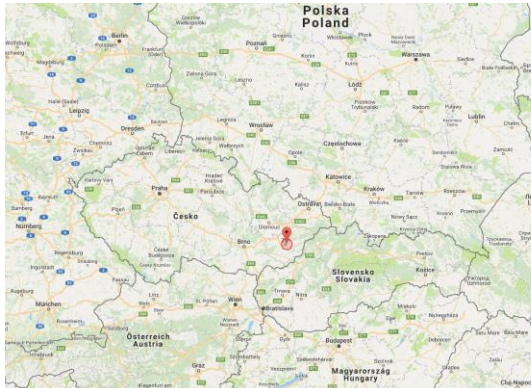
Current situation – daily findings



Current situation – sum of findings

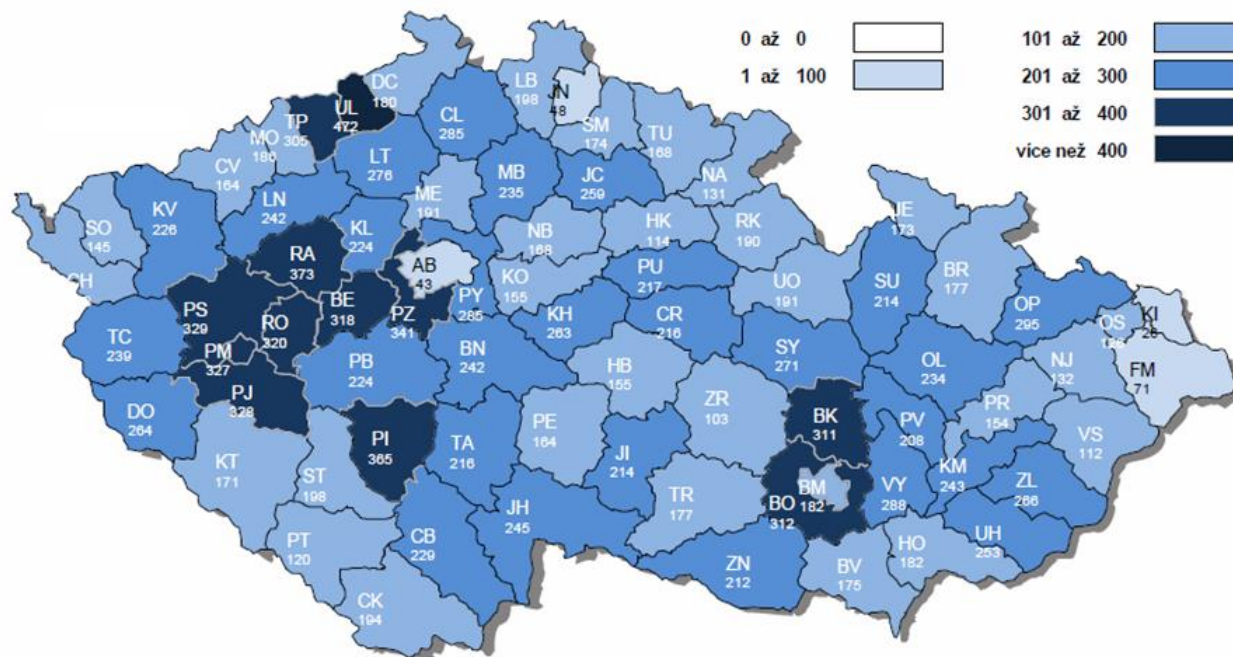


Current situation – infected cadastral territories



Hunting density of wild boars in the hunting year 2015 (per 100 km²)

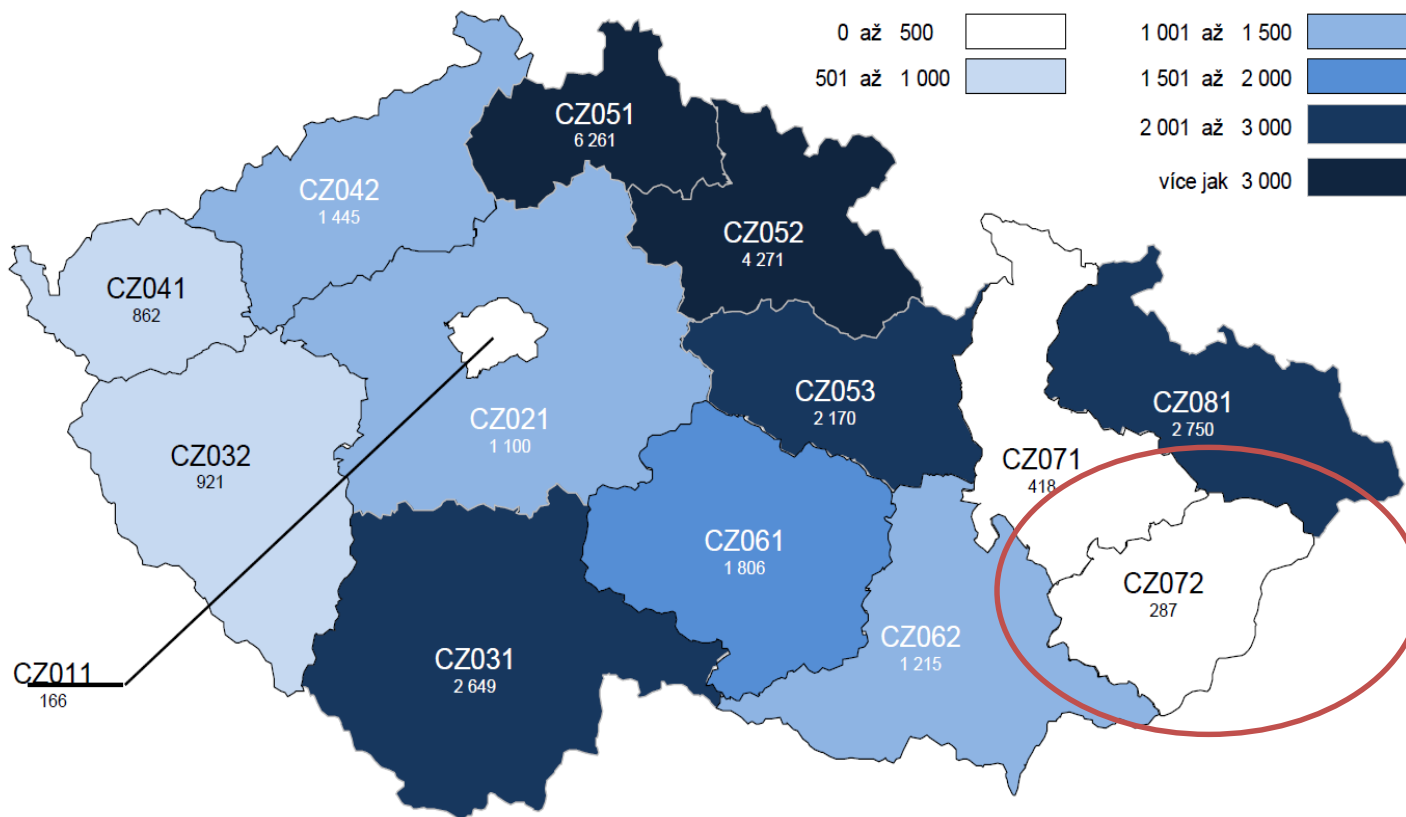
Year	number of hunted WB
2010	144 305
2011	109 563
2012	185 381
2013	152 468
2014	169 483
2015	186 148
2016	160 164



Density of domestic pigs in the Czech Republic (per 100 km²)

CZ 2 160 farms, 1 353 935 pigs

Zlín 83 farms, 74 088 pigs



Measures taken

1. In the infected area
 - ✓ Measures in domestic pigs
 - ✓ Measures in wild boars

2. In the whole country
 - ✓ Measures in domestic pigs
 - ✓ Measures in wild boars

Measures in the infected area in domestic pigs

1. Official checks in domestic pig farms (especially in farms with free range (eko-farms))
2. Monitoring of all sick or dead pigs
3. A list of pig farms in the infected area including back yards
4. Movement control
5. Ban of feeding with fresh grass
6. Ban of straw using
7. Testing of pigs from all big farms (5 farms, 150 blood samples) with negative result

Measures in the infected area in wild boars

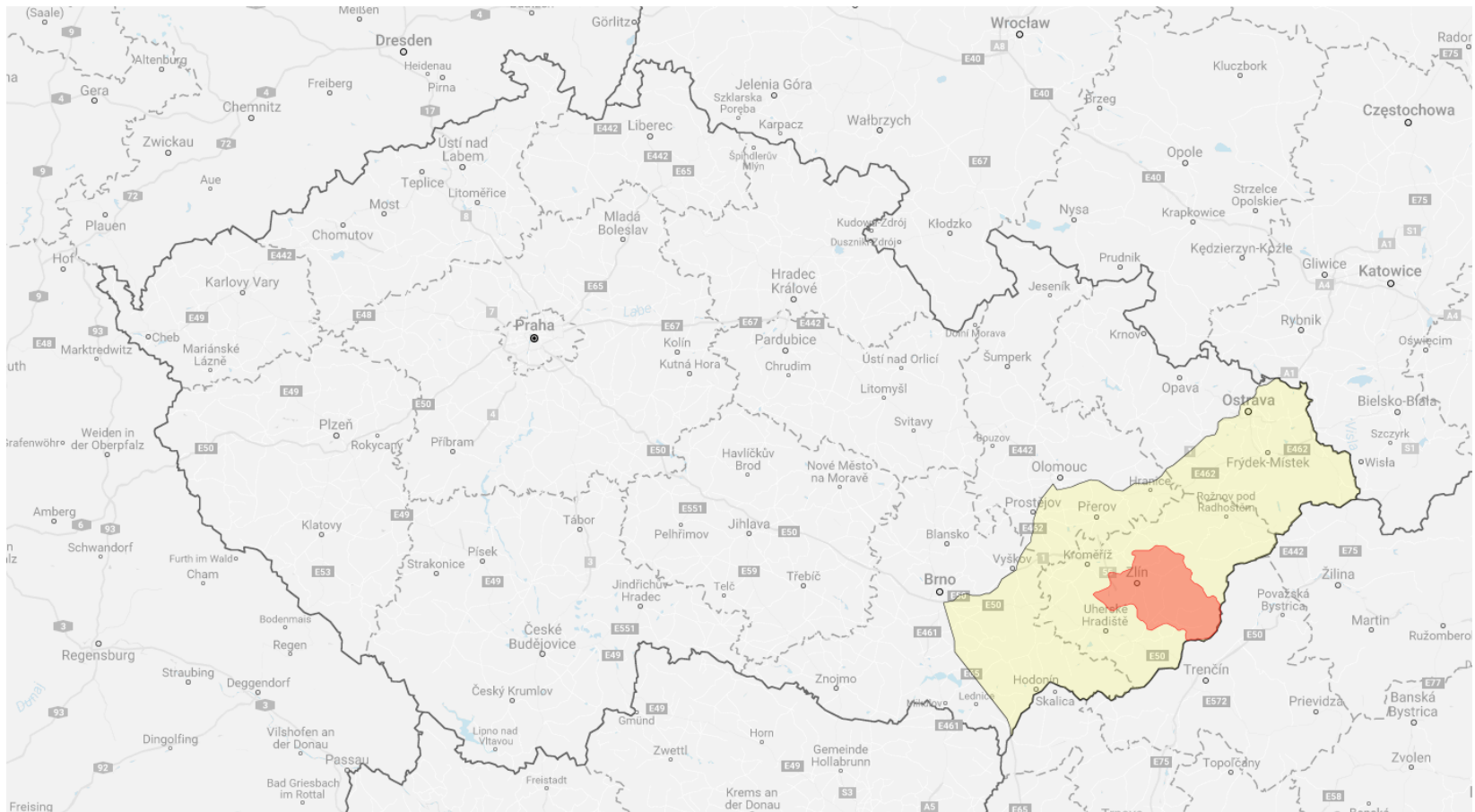
1. Ban of hunting
2. Ban of feeding
3. Active monitoring of the dead WB
4. Inspection by official veterinarian of every dead WB
5. Sampling of every dead WB and testing in NRL
6. Disposal of all WB found dead under official supervision in accordance with Regulation (EC) No 1069/2009
7. Epidemiological investigation in case of every dead WB

Measures in the whole country

1. Information for public, pig farmers, hunters, veterinarians etc.
 - ✓ Official letters,
 - ✓ Daily SVA web site updates,
 - ✓ Biosecurity guide for farmers,
 - ✓ List of disinfectants,
 - ✓ Guide for dead WB finding

2. Established an expert group including veterinarians, hunters, wild life biologists and epidemiologists (28. 6. 2017, the first meeting 30. 6. 2017)
 - ✓ With expert from the Community Veterinary Emergency Team) participation
 - ✓ Clarifying the situation
 - ✓ Request for data for the preparation of the eradication plan

Intensive hunting area



**Thank you
for your attention.**