

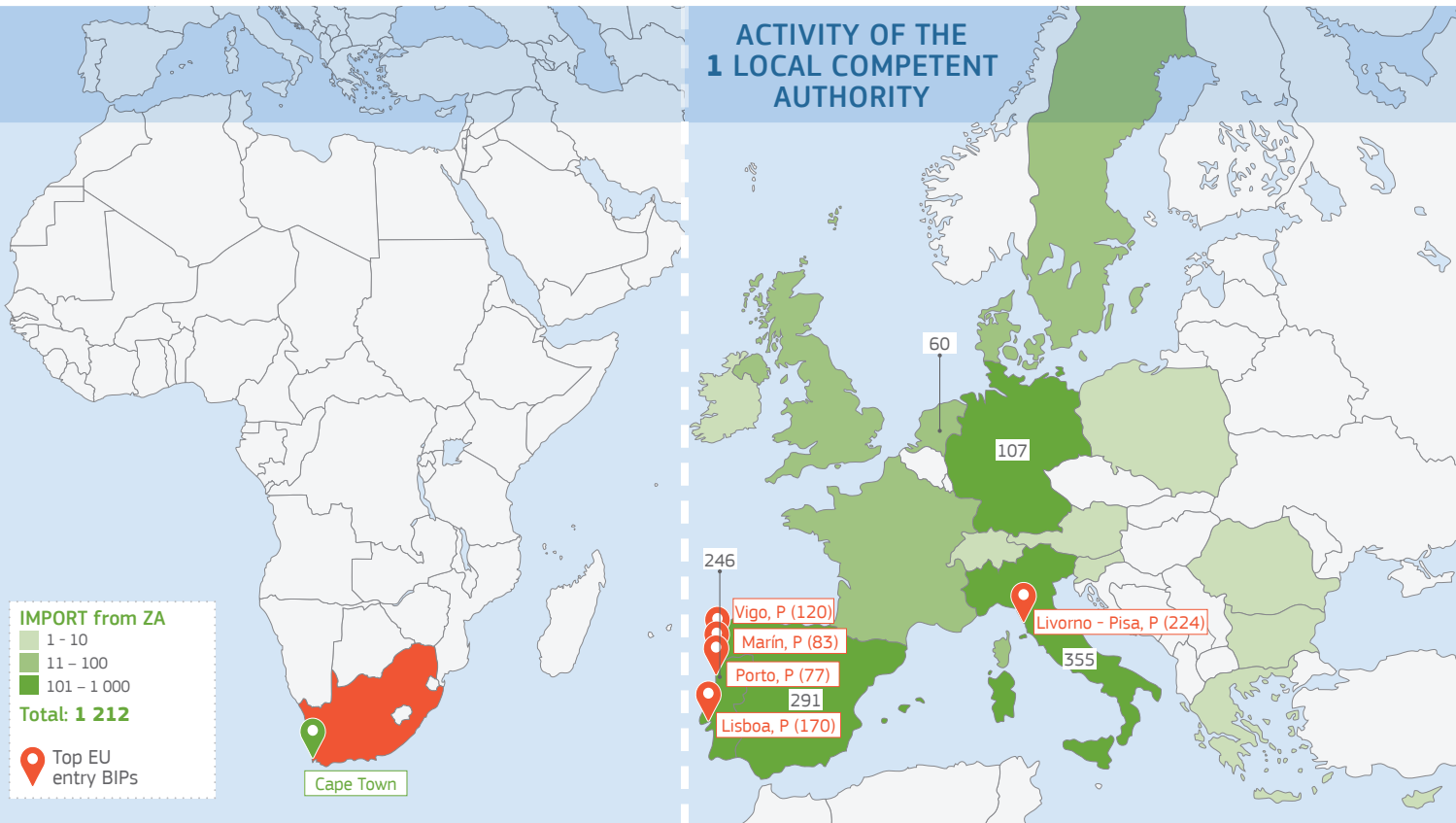


# 2016

TRAdE Control and Expert System (TRACES)

## SOUTH AFRICA (ZA)

**Central Competent Authority (CCA):**  
**Department of Agriculture, Forestry and Fisheries (DAFF)**  
**National Regulator for Compulsory Specifications (NRCS)**  
 148 Railway Road, Montaguë Gardens  
 Western Cape, Cape Town

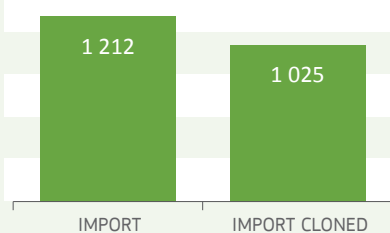


### Country specific details

First training: **November 2011**  
 First certificate in TRACES: **12/06/2012**  
 Implementation rate of TRACES<sup>1</sup>: **16 %**  
 Feedback rate from EU<sup>2</sup>: **85 %**

<sup>1</sup> Ratio IMPORT / CVED  
<sup>2</sup> Ratio IMPORT cloned / IMPORT

### Certification activity



### Number of consignments traded by category

