



# Better Training for Safer Food Initiative

## ***AFRICAN SWINE FEVER***

# BTSF

*This presentation is delivered under contract with the Consumers, Health, Agriculture and Food Executive Agency (<http://ec.europa.eu/chafea>). The content of this presentation is the sole responsibility of Opera S.u.r.l., the Istituto Zooprofilattico Sperimentale Lombardia e Emilia Romagna and the State Food and Veterinary Service of Latvia and it can in no way be taken to reflect the views of the Consumers, Health, Agriculture and Food Executive Agency or any other body of the European Union. The Consumers, Health, Agriculture and Food Executive Agency or any other body of the European Union will not be responsible under any circumstances for the contents of communication items prepared by the contractors.*

**Belgrade, Serbia 6-8/11/2018**



# Border control: general legislation and prevention of ASF introduction - practical approach

***Iveta Zemniece***

Food and Veterinary Service

Republic of Latvia

Border Control Department

Deputy Director

[iveta.zemniece@pvd.gov.lv](mailto:iveta.zemniece@pvd.gov.lv)

# EU WHITE PAPER ON FOOD SAFETY (1)

COMMISSION WHITE PAPER ON FOOD SAFETY  
12 January 2000



## EU WHITE PAPER ON FOOD SAFETY(2)

- **Need for a more coherent, effective and dynamic EU food policy**
- **EU food policy to be built around high food safety standards, taking into account a system that ensures a high level of protection of public health, animal health and welfare, plant health and the environment**
- EU food policy must be based on a comprehensive and integrated risk analysis approach throughout all food chain

from **FARM** to



# EU WHITE PAPER ON FOOD SAFETY

**IN LINE WITH THE 'FARM TO FORK' APPROACH ON THE  
EU WHITE PAPER ON FOOD SAFETY**

# From Farm to Fork

## CONTROLLING THE SAFETY OF THE AGRI FOOD CHAIN



NATIONAL ENFORCEMENT  
AUTHORITIES PERFORM  
CONTROLS ON FARMS,  
BUT ALSO...

> THE CONTROLS CHECK FOR

- hormones
- chemical residues
- bacterial / viral contamination
- overall hygiene
- labelling

...BORDER CONTROLS  
FOR IMPORTED ANIMALS, PLANTS,  
SPECIFIC FOODSTUFF  
FROM OUTSIDE THE EU  
AND...

- proper refrigeration
- animal and plant health requirements
- animal welfare
- fraud

CONTROLS DURING  
TRANSPORT WITHIN  
THE EU, AND...

> Controls are performed  
on the basis of RISK for health

...CONTROLS ON  
FOOD PROCESSING PLANTS,  
WHOLESALEERS, SUPERMARKETS  
RETAILERS AND RESTAURANTS

> 100,000-120,000  
IMPARTIAL, INDEPENDENT,  
WELL TRAINED STAFF  
with specific inspection competences  
check 25 MILLION operators  
along the agrifood chain for the  
safety of 500 million consumers.



## **EU WHITE PAPER ON FOOD SAFETY - PROPOSALS**

- **New legal approach in the food domain with the introduction of the principles related to food safety, including feed, animal health and welfare, food and feed hygiene, contaminants, novel food and food and feed additives**
- **Responsibilities for all food and feed operators**
- **Traceability of food and feed and their ingredients throughout the whole food chain**
- **Appropriate official controls in all MS, including import controls**
- **Consumer information and transparency**
- **Establishment of an independent European food safety authority, with particular responsibilities for both risk assessment and communication on food safety issues**







# GENERAL FOOD LAW

## AIM AND SCOPE

Lays down the general principles governing food and feed in general, and food and feed safety in particular, providing the basis for the assurance of a high level of protection of human health and consumers' interest in relation to food

### ESTABLISHES:

- The **European Food Safety Authority - EFSA**
- Procedures for matters with a direct or indirect impact on food and feed safety

### APPLIES:

- To all stages of production, processing and distribution of food and feed, and the feed for food-producing animals (except primary production for private domestic use or to the domestic preparation, handling or storage of food for private domestic consumption)

# Control Regulation

Official control by member states: **REGULATION 882** of 29 April 2004 on official controls performed to ensure the verification of compliance with feed and food law, animal health and animal welfare

- Definitions,
- Obligations,
- Competent authorities,
- Sampling and analysis,
- Official controls,
- Reference laboratories,
- Control plans,
- Import from third countries,
- Enforcement

BTSEF

# Veterinary border control

The veterinary border control is a key factor to ensure that the live animals and animal products entering to the European Union are safe and meeting the **specific import conditions** laid down in the Union legislation.

The imported live animals and animal products present the highest level of risks as they can transmit serious human and animal diseases. Therefore it is necessary to subject them to specific controls at their point of entry, so called **Veterinary Border Inspection Posts**(BIPs).

A consignment of live animals or animal products can only enter into the EU, if it has satisfactorily undergone the specific checks and a Common Veterinary Entry Document (CVED) is issued from **TRACES (Trade Control and Expert System)**. TRACES is a centralised database which allows the monitoring of consignments of live animals and animal products checked at the BIPs. TRACES may automatically exchange data on import controls with customs authorities, which has enabled DG TAXUD and DG SANTE to develop an EU CVED Single Window project.

# Official controls on imported products (1)

The European Union is a major importer of food and feed. Strict import rules with respect to food and feed hygiene, consumer safety and animal health status aim at assuring that **all imports fulfill the same high standards as products from the EU itself**. Import controls are crucial in verifying compliance of food and feed products with relevant requirements.

Current **approach to import controls varies according to the sector**.

**Mandatory** channeling of products to border control entities and uniform frequencies for checks apply to **live animals, products of animal origin, plants and plant products** because of the risk those commodities might pose in relation to animal or plant health respectively.



## Official controls on imported products (2)

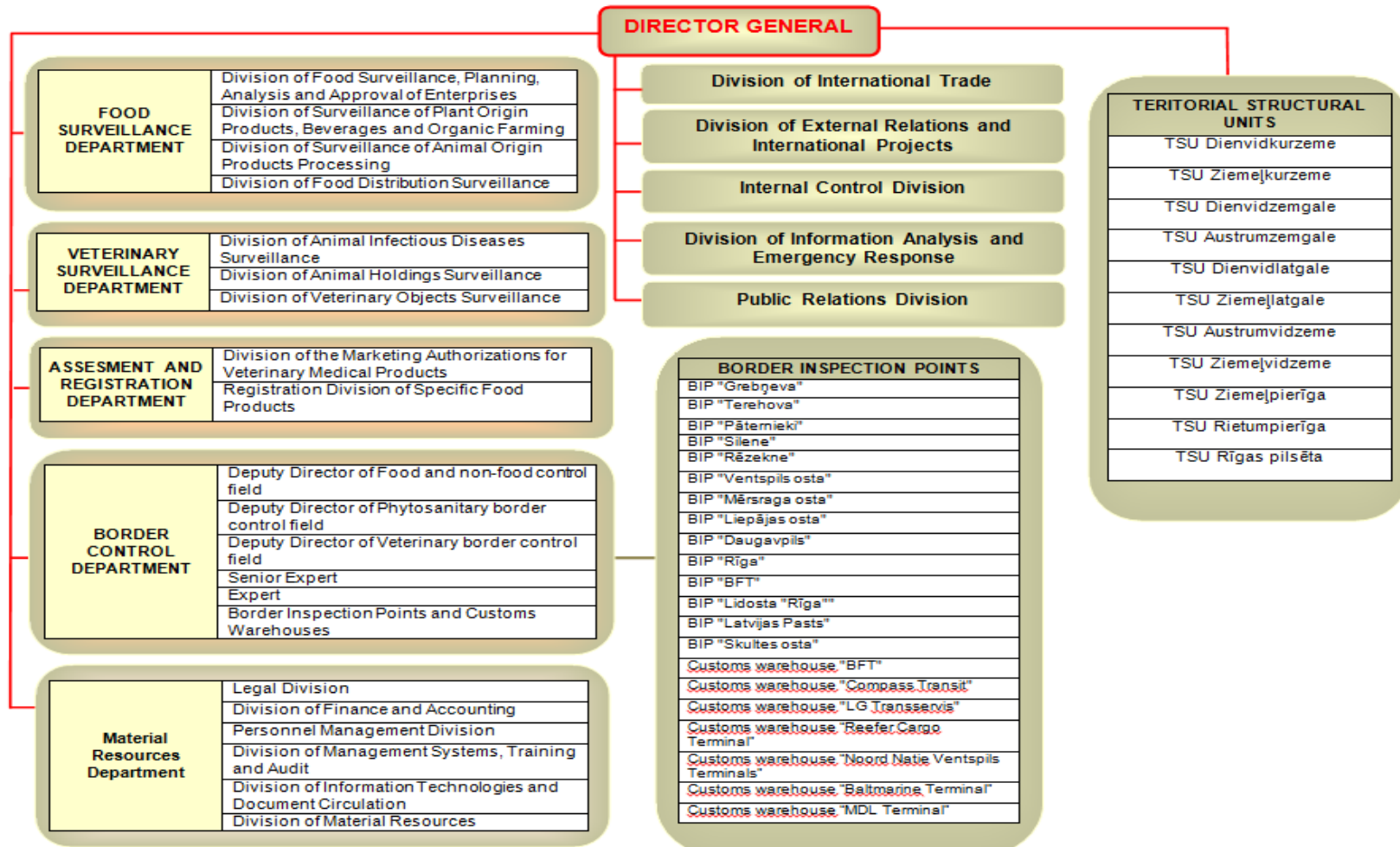
The vast majority of other products of relevance for the food chain is not channeled through specific border entities and **doesn't need to undergo mandatory checks** prior to their entry into the EU. It concerns for example feed and food which are of non-animal origin - including certain composite products, additives and other substances that might impact on the characteristics of food and feed, or materials intended to enter into contact with food.

One notable **exception** is **food and feed of non-animal** origin which is **temporarily subject to mandatory** border controls due to the existence of an identified risk (i.e. the products listed under Regulation (EC) No 669/2009).



European  
Commission

# Structure of FVS

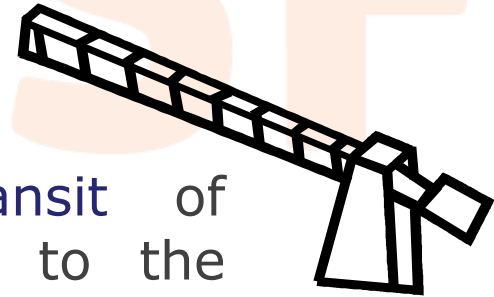


## Basic Assignment of Border Control Department

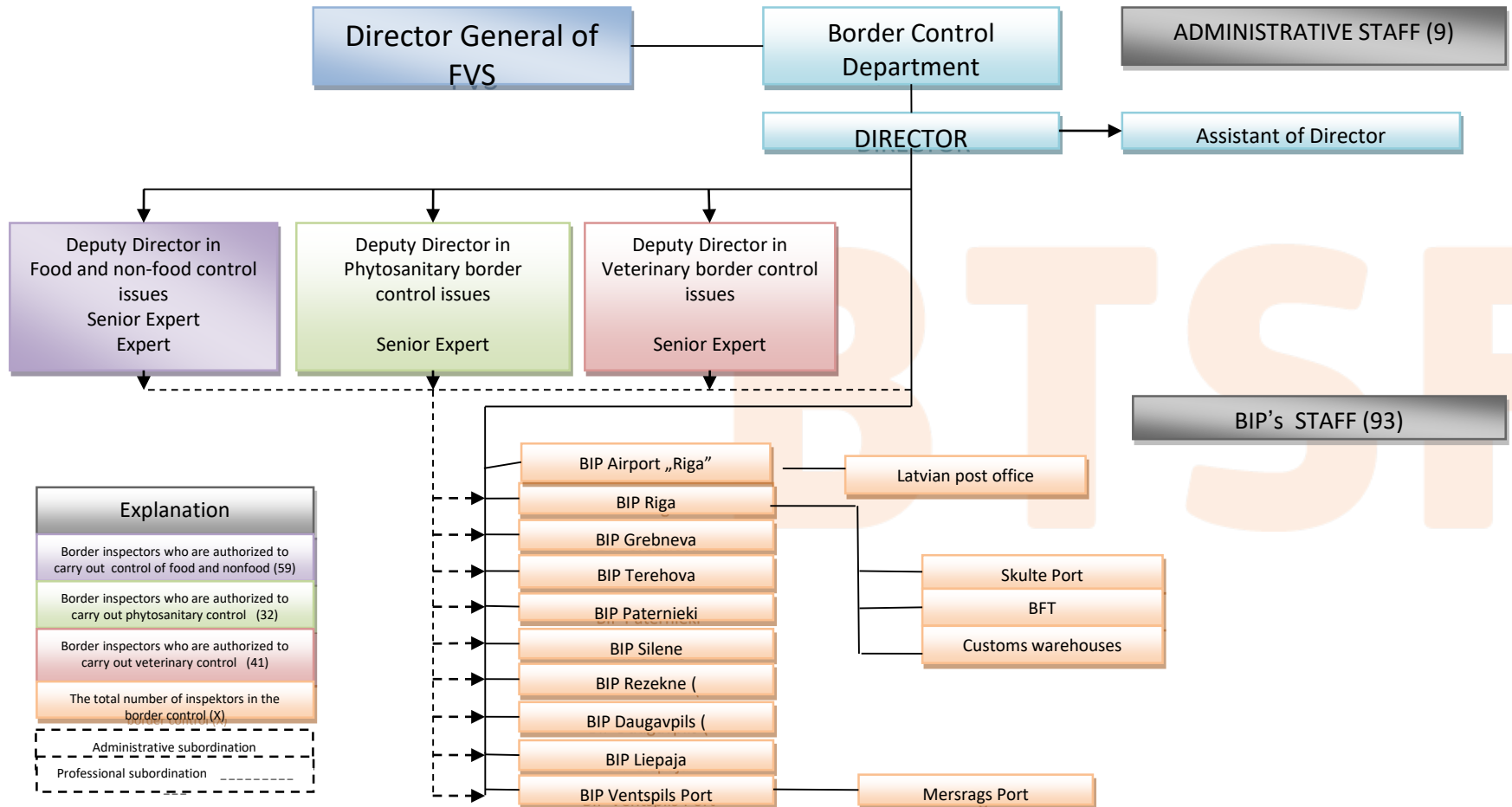


**performs** supervision and control of products and goods import through the state border control points, free warehouses and customs warehouses

**controls** import, export and transit of products and animals subordinated to the border control preventing from distribution of products and diseases hazardous for consumer health and life as well as for environment



# Structure of BCD







European Commission

# FVS Border Control Points



- Veterinary control (products), -veterinary control (live animals),
- phytosanitary control,
- DPE and food safety control



European  
Commission

## Control facilities, equipment- comply with high EU standards

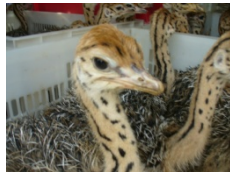


Food safety

## System in place

### The BCD performs controls on:

live animals and animal origin products (**CD 2007/275 EC**)



plants and plant products (Council **Directive 2002/29/EC Annex V**)



food and feed (**Regulations (EC) No 669/2009; 884/2014**)



food and materials and products intended to be in contact with food products (**Regulation (EC) No 882/2004; 765/2008; 1935/2004**)



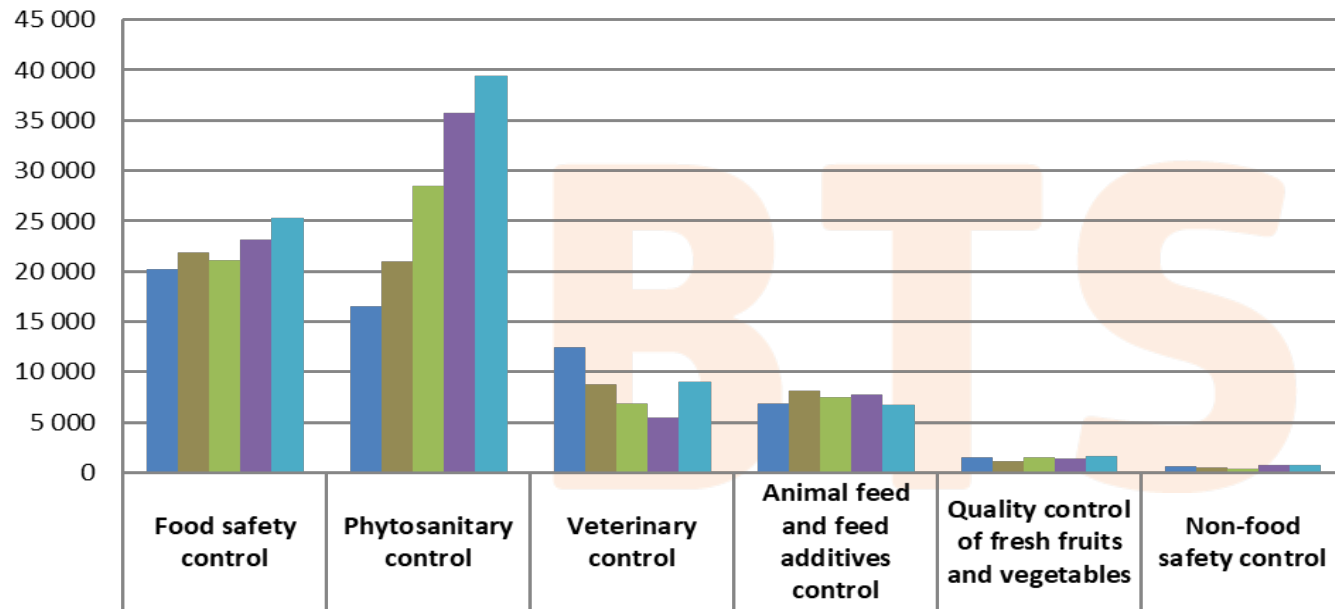
medicines for human and veterinary drugs (**Regulation (EC) No 765/2008; Directive 2001/82/EC**)





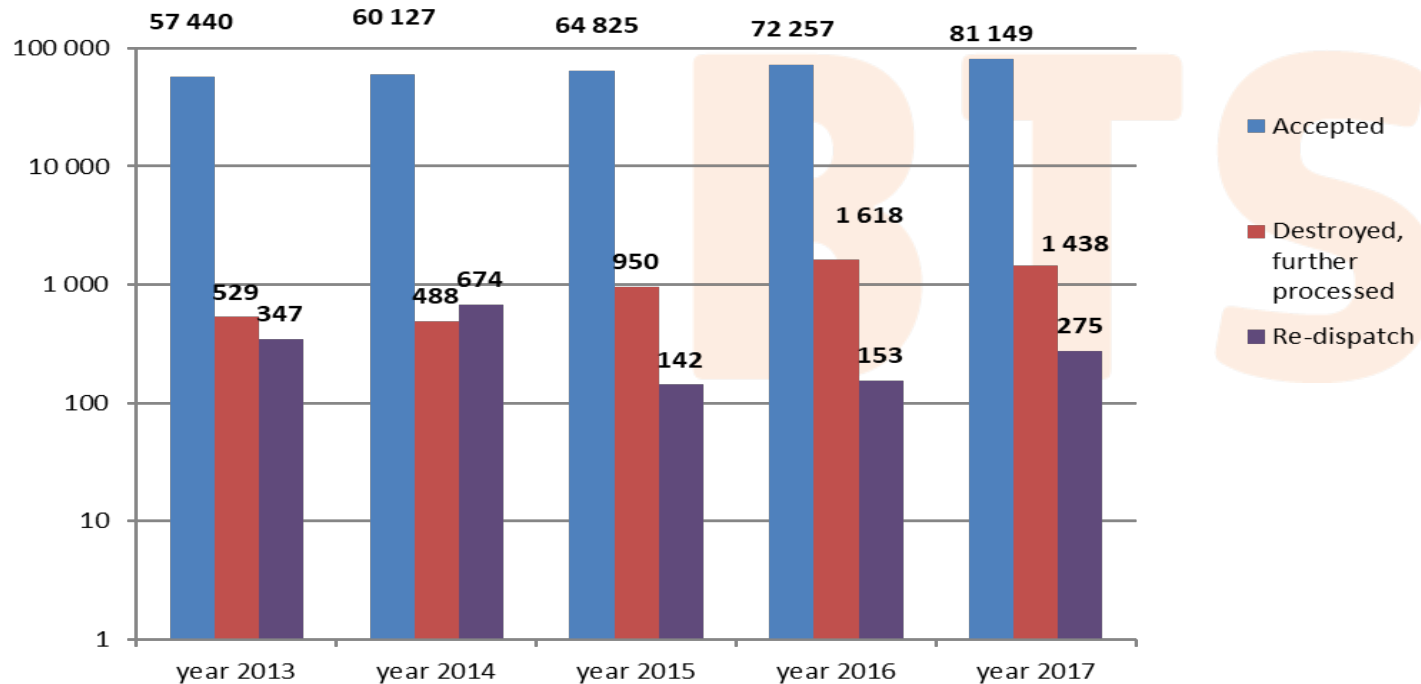
European  
Commission

## Breakdown by type of controls at FVS BIP`s Years 2013-2017

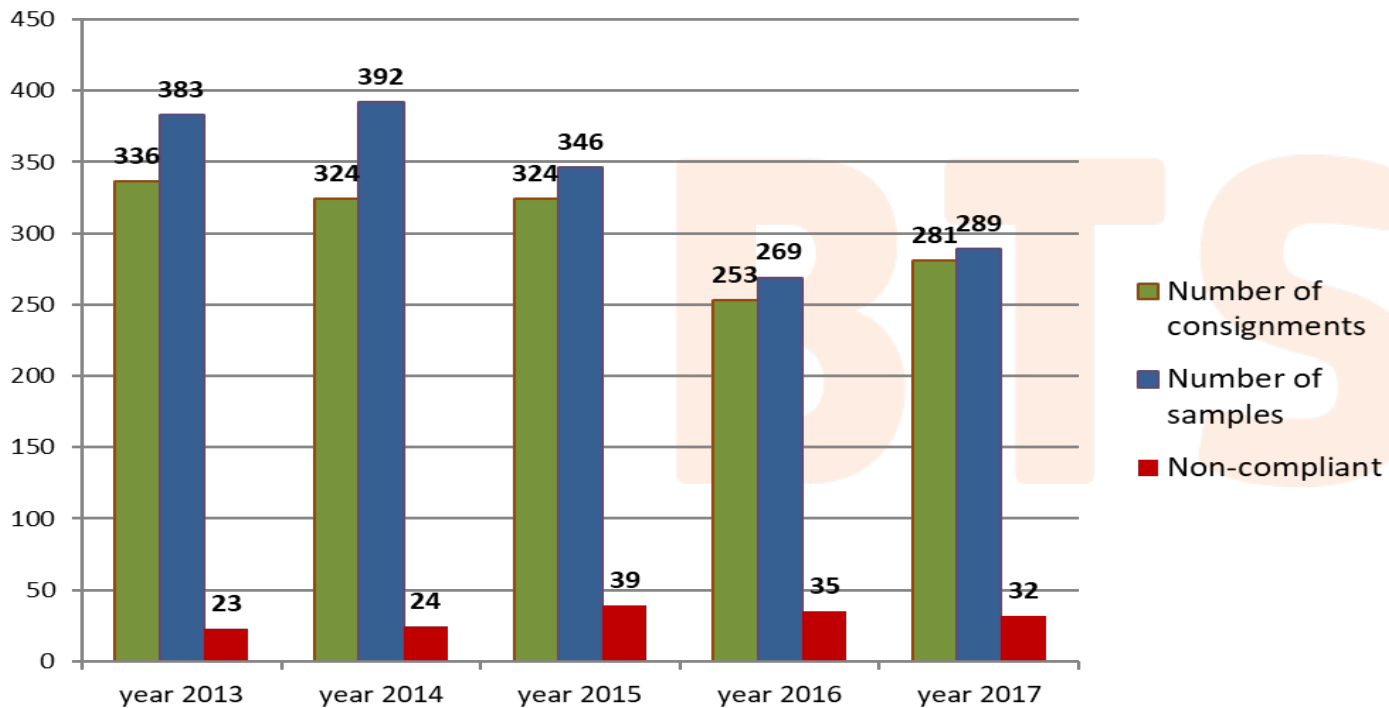


■ year 2013 - 58 316	20 192	16 566	12 496	6 842	1 568	652
■ year 2014 - 61 289	21 863	20 948	8 703	8 133	1 171	471
■ year 2015 - 65 917	21 146	28 429	6 869	7 463	1 579	431
■ year 2016 - 74 028	23 083	35 732	5 406	7 774	1 341	692
■ year 2017 - 82 862	25 341	39 361	9 055	6 692	1 612	801

# Comparison of accepted and rejected consignments



## Laboratory-tested consignments



# Data entry in TRACES by decision of border control inspectors



From 01.05.2004.  
veterinary field

From 10.12.2015.  
phytosanitary field



 **TRACES**  
TRAde Control and Expert System

TRACES



From 01.06.2014.  
food field

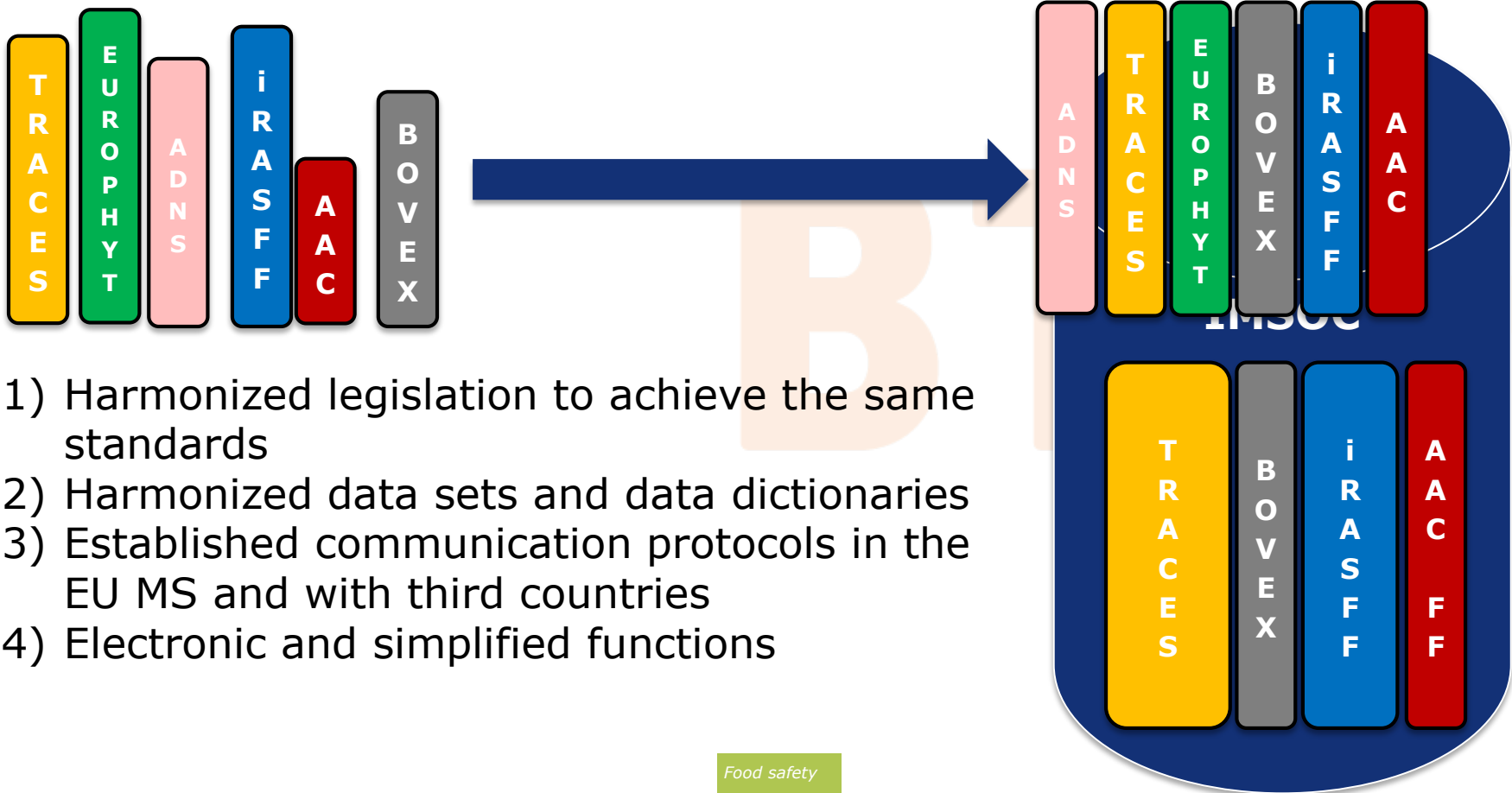


**Within the framework of the pilot project Speed 2 of the European Commission from 20.09.2015 TRACES is linked to the Electronic Customs Data Processing System (EMDAS)**



European  
Commission

## How to: IMSOC Step by Step





## Inspector should be checked that the live animals /products:

- come from a third **country** or a part of a third country that appears on a **Community list**,
- come from an **establishment** that appears on a **list**,
- carry a **health or identification mark**,
- are accompanied by a **certificate** issued by the representative of the competent authority of the third country,
- comply with the **animal health requirements of Directive 2002/99/EC**

## Live animal movement from non-EU countries



The movement of live animals is strictly regulated by **Commission Regulation (EU) No 206/2010** laying down lists of third countries, territories or parts thereof authorized for the introduction into the European Union of certain animals and fresh meat and the veterinary certification requirements.

## Prevention of ASF introduction - practical approach

### 1) Verification on the enforcement activities on personal luggage checks against the requirements of (EC) No 206/2009 on POAO in personal luggage

*Two level (CCA and BIP level) verification system with defined criteria on personal luggage checks enforcement implemented since year 2005 by regular border crossing points inspections*

### 2) Common extraordinary actions on border crossing points together with customs within the framework of cooperation agreement between FVS and Customs Board





## **Verification on the enforcement activities on personal luggage checks**

BCD performs two level (CCA and BIP level) verification on personal luggage checks enforcement since year 2005 by regular border crossing points surveillance.

### **Surveillance criteria:**

- Organization of illegal import checks
- Training – by whom, when, number of trained staff
- Instructions available/updated
- Information to public- posters, leaflets available and updated



## Commission Implementing Decision 2013/426/EU

The controls on empty livestock vehicles are required by Decision 2013/426/EU are carried out by FVS staff at the road BIPs.

The enforcement of **100%** documentary and physical checks for returning livestock vehicles from **Belarus, Ukraine, Moldova, Russia** by verifying details in the declaration and vehicle conformity with the rules, notably cleanliness and disinfection

the most important of which being the need to verify that the disinfectants used and the concentrations thereof are appropriate for the African Swine Fever virus.



European Commission

# Declaration

**MODEL DECLARATION TO BE PROVIDED BY THE OPERATOR/DRIVER OF THE LIVESTOCK VEHICLE ENTERING THE UNION FROM THIRD COUNTRIES OR PARTS OF THE TERRITORY OF THIRD COUNTRIES WHERE THE PRESENCE OF AFRICAN SWINE FEVER IS CONFIRMED**

I, the operator/driver of the livestock vehicle .....  
(insert number of registration plate)  
declare that:

— the most recent unloading of animals and feed took place at:

Country, region, place	Date (dd.mm.yy)	Time (hh:mm)

— following unloading, the livestock vehicle was subject to cleansing and disinfection. The cleansing and disinfection included the livestock or loading compartment, [the truck body] (delete if not applicable), the loading ramp, the equipment having been in contact with animals, the wheels and the driver's cabin and protective clothes/boots used during unloading.

The cleansing and disinfection took place:

Country, region, place	Date (dd.mm.yy)	Time (hh:mm)

— the disinfectant has been used at the concentrations recommended by the manufacturer (to indicate the substance and its concentration):

— the next loading of animals will take place at:

Country, region, place	Date (dd.mm.yy)	Time (hh:mm)

Date	Place	Signature of the operator/driver

Name of operator/driver of the livestock vehicle and its business address (in block letters)

## Deklarācija

Es, mājlopu transportlīdzekļa / I, the operator/driver of the livestock vehicle  
.....  
(norādīt transportlīdzekļa reģistrācijas numuru/insert number of registration plate)

operators/vadītājs, deklarēju, ka / declare that:

1. Dzīvnieku pēdēja izkraušana notikusi / the most recent unloading of animals took place at:

Valsts, reģions, vieta Country, region, place	Datums (dd.mm.gg) Date (dd.mm.yy)	Laiks (hh:mm) Time (hh:mm)
Rosja, Pichavalky, Šaravaha	08.11.15	09:40

Pēc izkraušanas mājdzīvnieku transportlīdzeklis ir iztīrīts un dezinficēts. Iztīrīts un dezinficēts mājdzīvnieku vai kravas nodalījums, [kravas transportlīdzekļa virsbūve] (ja nevajag, svītrot), iekraušanas rampa, iekārta, kas bijusi saskarē ar dzīvniekiem, riteņi un vadītāja kabine, kā arī izkraušanas laikā izmantotais aizsargtērps/apavi. / Following unloading, the livestock vehicle was subject to cleansing and disinfection. The cleansing and disinfection included the livestock or loading compartment, [the truck body] (delete if not applicable), the loading ramp, the equipment having been in contact with animals, the wheels and the driver's cabin and protective clothes/boots used during unloading.

2. Tīrīšana un dezinficēšana notikusi / The cleansing and disinfection took place:

Valsts, reģions, vieta Country, region, place	Datums (dd.mm.gg) Date (dd.mm.yy)	Laiks (hh:mm) Time (hh:mm)
Rosja, Pichavalky, Šaravaha	08.11.2015	12:00

3. Dezinfekcijas līdzeklis lietots ražotāja ieteiktajā koncentrācijā (norādīt vielu un koncentrāciju) / the disinfectant has been used at the concentrations recommended by the manufacturer (to indicate the substance and its concentration):

.....  
K. B. Nixadon

4. Nākamā dzīvnieku iekraušana notiks / the next loading of animals will take place at:

Valsts, reģions, vieta Country, region, place	Datums (dd.mm.gg) Date (dd.mm.yy)	Laiks (hh:mm) Time (hh:mm)
Estonska, Sõgama	10.11.2015	12:00

Datums (dd.mm.gg) Date (dd.mm.yy)	Vieta Place	Operatora/vadītāja paraksts Signature of the operator/driver
08.11.2015	Breļņevu	Mscenis G. Bļģen

Mājlopu transportlīdzekļa operatora/vadītāja vārds, uzvārds un adrese (lielajiem burtiem) / Name of operator/driver of the livestock vehicle and its business address (in block letters):  
K. S. P. N. S. K. L. M. O. S. L. E. C. H. G. B. 210. Chlaskovna d. l. 14. M. P. O.

Paraksts/Signature..... Datums /Date 08.11.2015



European Commission

# The effectiveness of the disinfectant

**LANXESS**  
Energizing Chemistry

**Virkon™**

PORTFOLIO ▾ NEWS ▾ CONTACT ▾

**AFRICAN SWINE FEVER**

African Swine Fever (ASF) can be considered one of the most feared epidemic diseases of pig production, the others being Swine Vesicular Disease (SVD), Porcine epidemic diarrhoea virus (PEDv) and Foot and Mouth Disease (FMD).

ASF

Portfolio

Virkon S

African Swine Fever

**NEWS** 1 | 2 | 3 | All

---

Strict biosecurity recommended in the fight against African Swine Fever

**QUICKLINKS**

- ▶ RelyOn
- ▶ Material Protection Products
- ▶ LANXESS

**CONTACT** All

CLOSE BY ANYWHERE IN THE WORLD

**VIRKON™ S - USA**

Routine Day-to-Day Disinfection and Emergency Disease Control





European Commission

# Certificate and daily risk approach

## CLEANSING AND DISINFECTION CERTIFICATE FOR LIVESTOCK VEHICLES ENTERING THE UNION FROM THIRD COUNTRIES OR PARTS OF THE TERRITORY OF THIRD COUNTRIES WHERE THE PRESENCE OF AFRICAN SWINE FEVER IS CONFIRMED

I, the undersigned official certify that I have checked:

1. the livestock vehicle(s) with the registration plate(s) .....  
*(insert number(s) of registration plate(s))*

today and by visual control found the livestock or loading compartment, [the truck body] <sup>(1)</sup>, the loading ramp, the equipment having been in contact with animals, the wheels and the driver's cabin and protective clothes/boots used during unloading satisfactorily cleansed.

2. the information presented in the form of a declaration as set out in Annex II to Commission Implementing Decision 2013/426/EU or in another equivalent form covering the items set out in Annex II to Commission Implementing Decision 2013/426/EU.

Date	Time	Place	Competent authority	Signature of the official (*)

Stamp: Name in block letters:  
.....

(\*) The colour of the stamp and the signature must be different from that of the printing.







European  
Commission

# Empty livestock vehicles control





European  
Commission

# Thank you for your attention !





This presentation is delivered under contract with the Consumers, Health, Agriculture and Food Executive Agency (<http://ec.europa.eu/chafea>). The content of this presentation is the sole responsibility of Opera S.u.r.l., the Istituto Zooprofilattico Sperimentale Lombardia e Emilia Romagna and the State Food and Veterinary Service of Latvia and it can in no way be taken to reflect the views of the Consumers, Health, Agriculture and Food Executive Agency or any other body of the European Union. The Consumers, Health, Agriculture and Food Executive Agency or any other body of the European Union will not be responsible under any circumstances for the contents of communication items prepared by the contractors.

## **OPERA**

Viale Parioli 96, 00197 Roma - Italy  
Tel +39 06 96042652- / +39 06 8080111  
Fax +39 06 89280678  
[info@opera-italy.it](mailto:info@opera-italy.it); [www.btsftraining.com](http://www.btsftraining.com);  
<http://opera-italy.eu/>

© Copyright holder: European Commission (2018)

## **Better Training for Safer Food BTSF**

• *European Commission  
Consumers, Health and Food Executive Agency  
DRB A3/042  
L-2920 Luxembourg*