



# African swine fever in Lithuania: update of the situation

State Food and Veterinary Service of  
The Republic of Lithuania

[www.vmvt.lt](http://www.vmvt.lt)

April | 2024

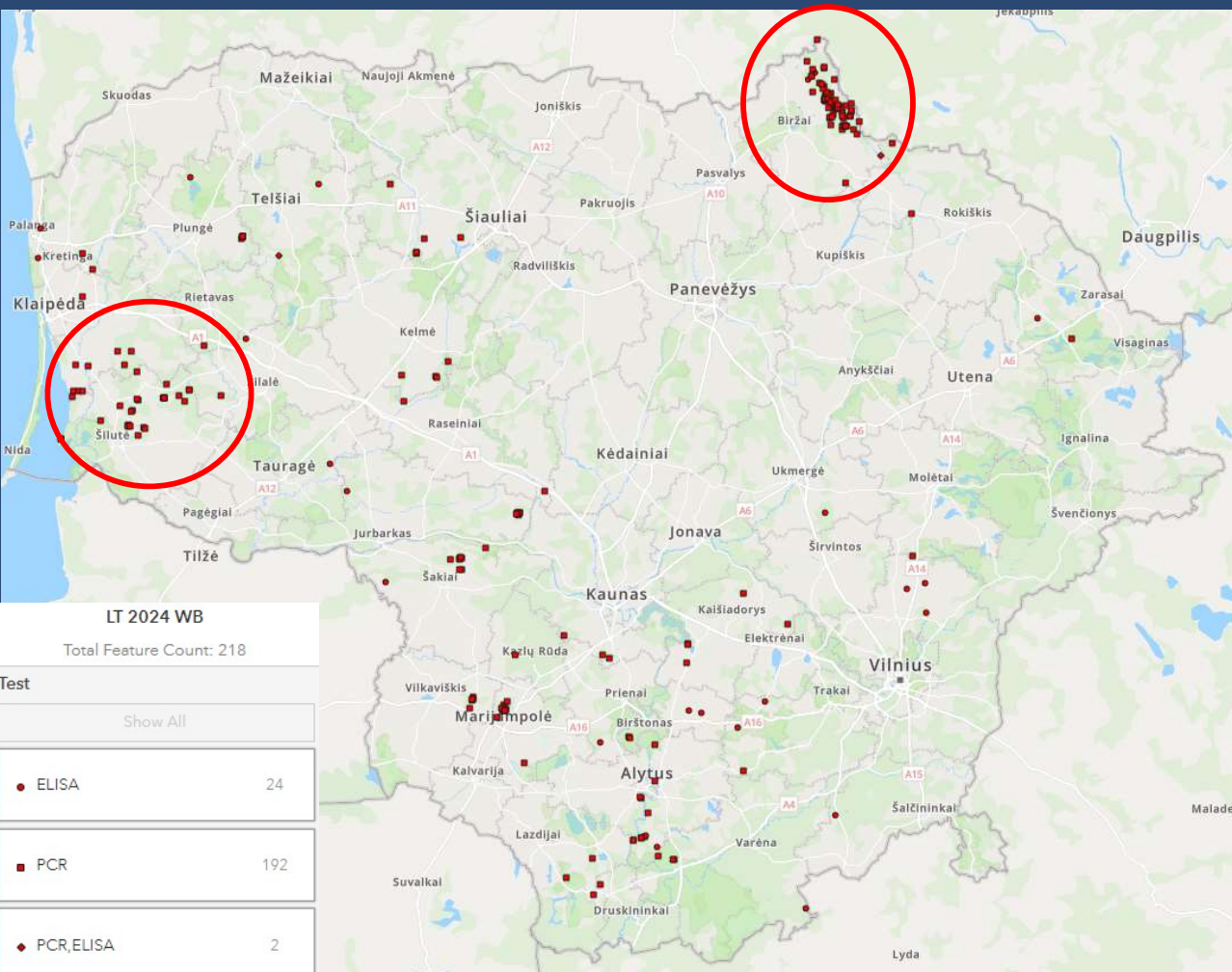
# ASF in Lithuania in wild boars

**No ASF outbreaks in domestic pigs since July 2023**

2024

- 52 hunted wild boar
- 343 found dead wild boar

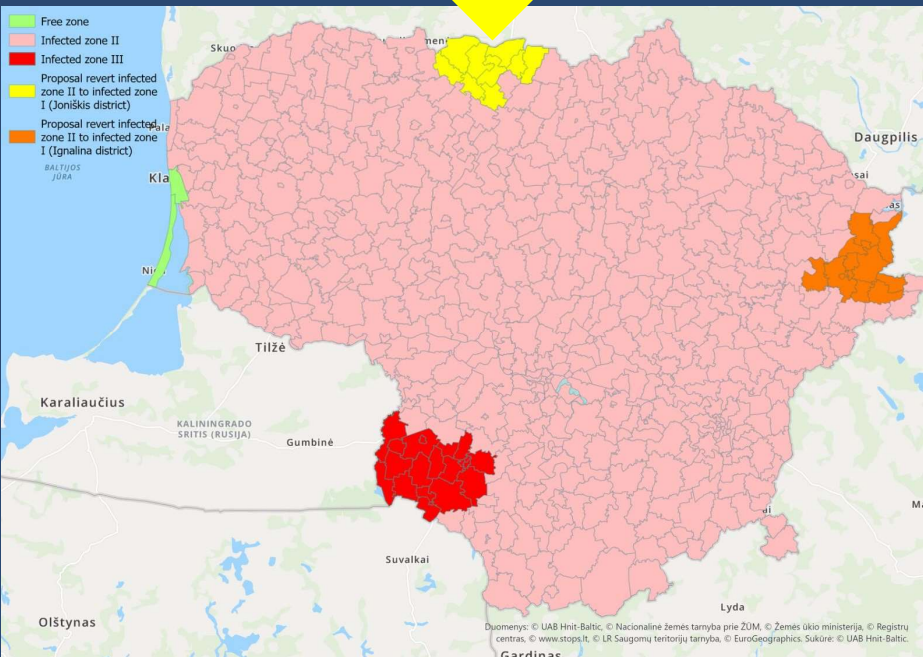
In total:  
281 ADIS notifications / 395 affected wild boars



# ASF in Lithuania in domestic pigs

Application for lifting certain areas from RZ II and revert to RZ I

Joniškio rajono savivaldybės: Gaižaičių sen., Gataučių sen., Joniškio sen., Kriukių sen., Rudiškių sen., Satkūnų sen., Saugėlaukio sen., Skaistgirio sen., Žagarės sen.



There have been no ASF outbreaks in wild porcine animals during the past 12 months.

The most recent case was confirmed on 18 November 2021 .

Passive surveillance was conducted in combination with active one across the entire Joniškis district municipality territory.

In 2023, 225 wild boars were hunted and tested negative for ASF, 2 dead wild boars were found dead and tested negative.

Forests occupy only 18% of the total area of the municipality.

The last ASF outbreak in domestic pigs in Joniškis district municipality was confirmed on 17 August 2018.

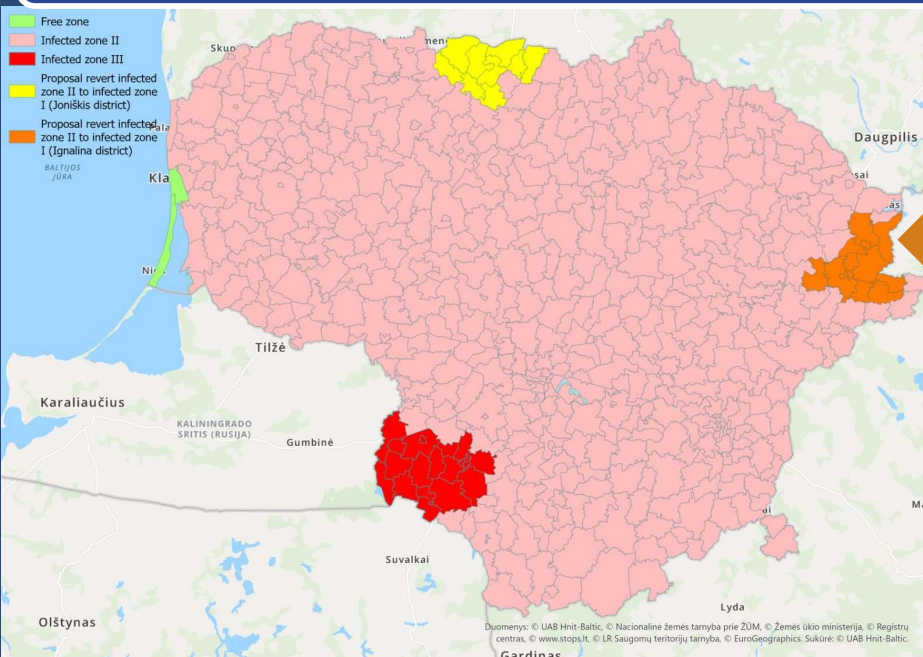
# ASF in Lithuania in domestic pigs

Application for lifting certain areas from RZ II and revert to RZ I

There have been no ASF outbreaks in wild porcine animals in Ignalina municipality over the past 12 months.

There are 1 commercial pig farm with a total of 20962 pigs and no non-commercial farms in the Ignalina district municipality.

Passive surveillance is conducted in combination with the active one.



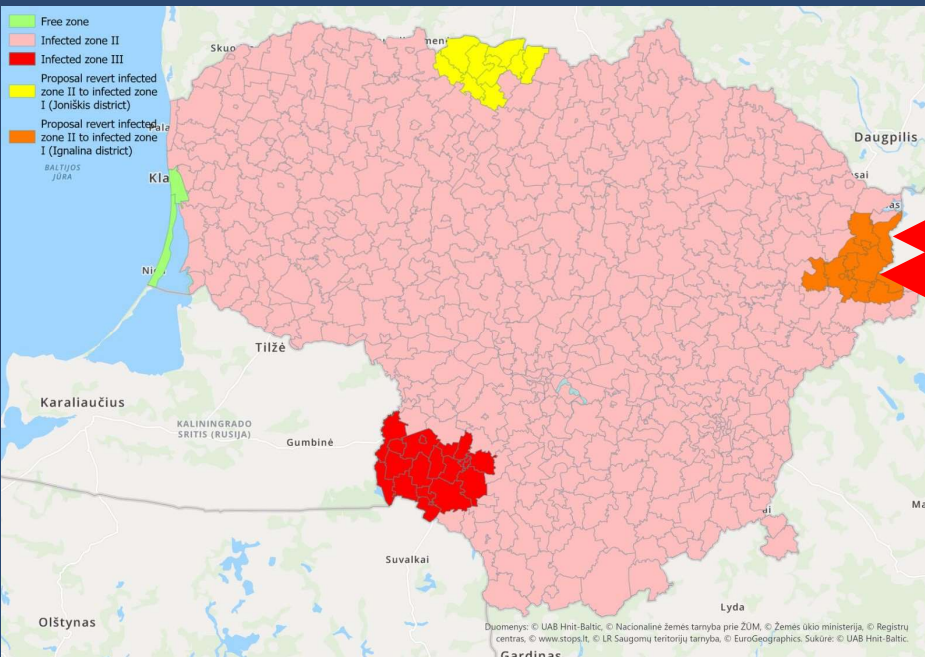
Ignalinos rajono savivaldybės: Ceikinių sen., Dūkšto sen., Ignalinos sen., Ignalinos miesto sen., Kazitiškio sen. rytinė dalis nuo 102 kelio, Linkmenų sen., Naujojo Daugėlišio sen., Mielagėnų sen., Rimšės sen., Tverečiaus sen., Vidiškių sen.



# ASF in Lithuania in domestic pigs

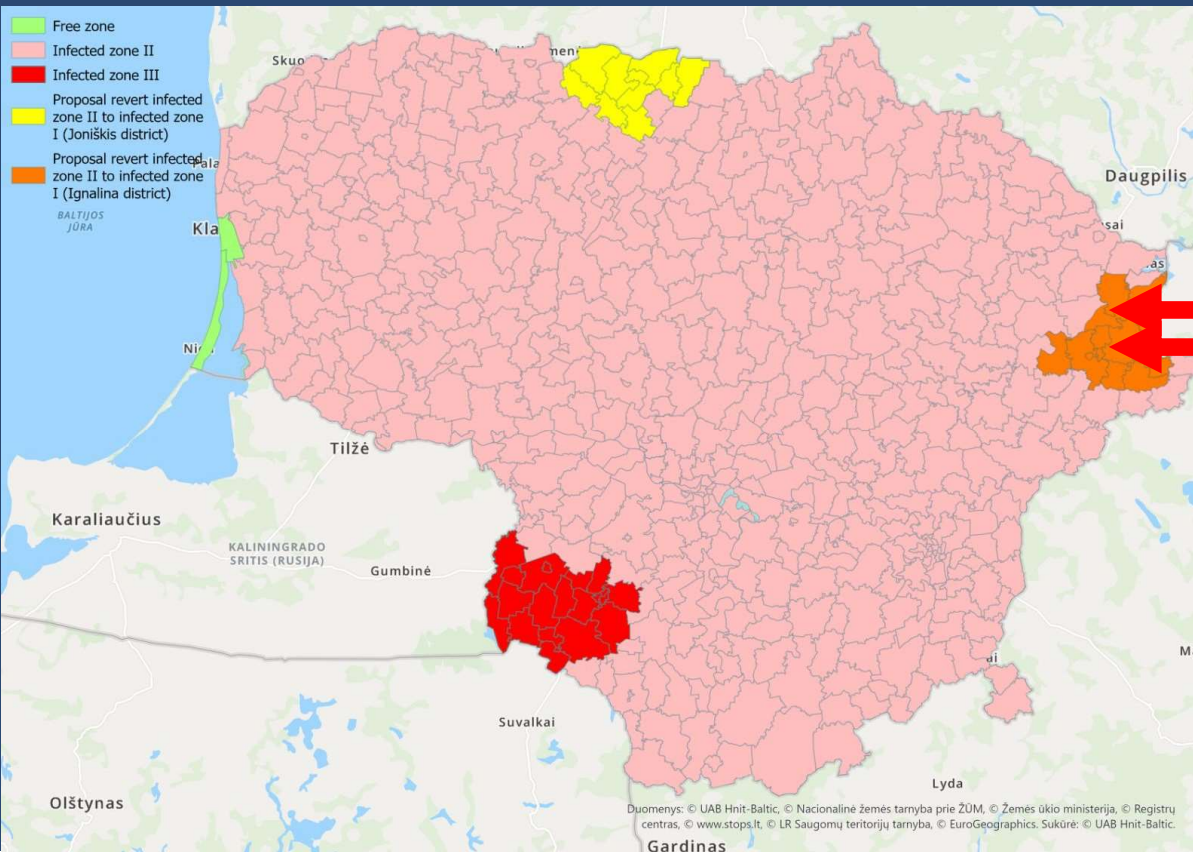
## Application for lifting certain areas from RZ II and revert to RZ I

The entire border with Belarus is surrounded by a fence, which is a physical barrier to the movement of wild boars



# ASF in Lithuania in domestic pigs

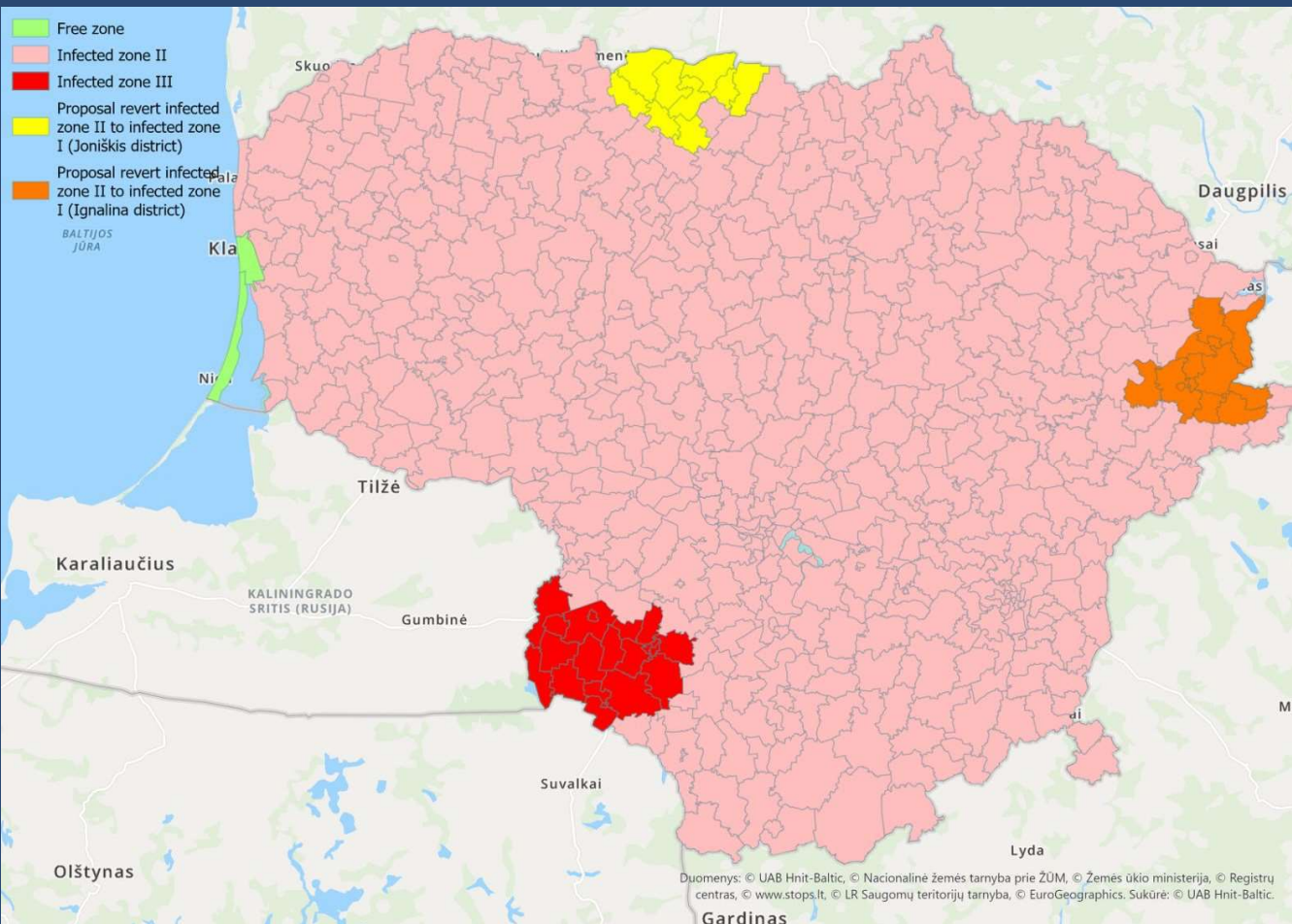
## Application for lifting certain areas from RZ II and revert to RZ I





# ASF in Lithuania in domestic pigs

Application for lifting certain areas from RZ II and revert to RZ I



Based on the Commission Delegated Regulation (EU) 2020/687 and African swine fever in the Union ('ASF guidelines') (C/2023/1504) of 18 December 2023:

- There have been no ASF outbreaks in wild porcine animals during the past 12 months';
- Passive surveillance system for establishments of kept porcine animals is implemented;
- Active and passive surveillance for wild porcine animals are implemented.

