

PRESENTING

THE REFOOD MOVEMENT

**An Innovation in Food Rescue, Waste Avoidance
and Food Security at the Local,
National and Global levels**

REFOOD | LISBON | PORTUGAL

2021



REFOOD

STOP WASTE - FEED PEOPLE



REFOOD

STOP WASTE - FEED PEOPLE



We already have enough food to feed everyone in need



REFOOD

STOP WASTE - FEED PEOPLE



Inclusion alone can transform the world's waste into nutrition



REFOOD

STOP WASTE - FEED PEOPLE

MISSION: Rescue food, feed people and include the entire local community



PARCEIRO
DE UMA COMUNIDADE
+ SOLIDÁRIA
REFOOD

PARCEIRO
DE UMA COMUNIDADE
+ SOLIDÁRIA
REFOOD

The Work We Do ...



REFOOD

STOP WASTE - FEED PEOPLE



The human bridge that Refood builds between excess and necessity is a simple, straight-forward sequence of coordinated volunteer actions that unfolds as three consecutive processes: **Collection, Preparation** and **Distribution**. The results are very real and easily quantifiable - millions of meals rescued and delivered and thousands of tons of waste avoided..

Collection ...



REFOOD

STOP WASTE - FEED PEOPLE



Refood's immense capacity to generate social and environmental impact begins with its unique operational model - transforming unvalued excess food into extremely valuable nutrition for needy people. It all begins with the simple act of food rescue, which evolves into a fully functioning circular and solidary economy - multiplying benefits in local communities.

Preparation ...



REFOOD

STOP WASTE - FEED PEOPLE



Refood's impact is powered by people. Partners donate excess food, Volunteers donate their time and energy to pick up that donated food, carefully separate it into personalized family packs and deliver it into the hands of people who need it. The Refood Movement, driven by goodwill alone, works every day to build a more caring and sustainable community.

Distribution ...



REFOOD

STOP WASTE - FEED PEOPLE



Every meal rescued has a double impact: someone is fed and food waste is avoided. These impacts are tangible, measurable and quantifiable - millions of meals are rescued and thousands of tons of waste are avoided. But each meal is also delivered with a smile and we believe the less tangible - but very real - human impacts, are among the greatest benefits produced by Refood.

Human Benefits ...



REFOOD

STOP WASTE - FEED PEOPLE



The qualitative impacts generated by our work are enjoyed as direct benefits by all who choose to participate in building Refood's human bridge between excess and necessity.

That includes **Volunteers**, whose direct action results in an instant "return-on-investment", they always go home with a renewed – and invaluable - sense of purpose, relevance and happiness.

More Human Benefits ...



REFOOD

STOP WASTE - FEED PEOPLE

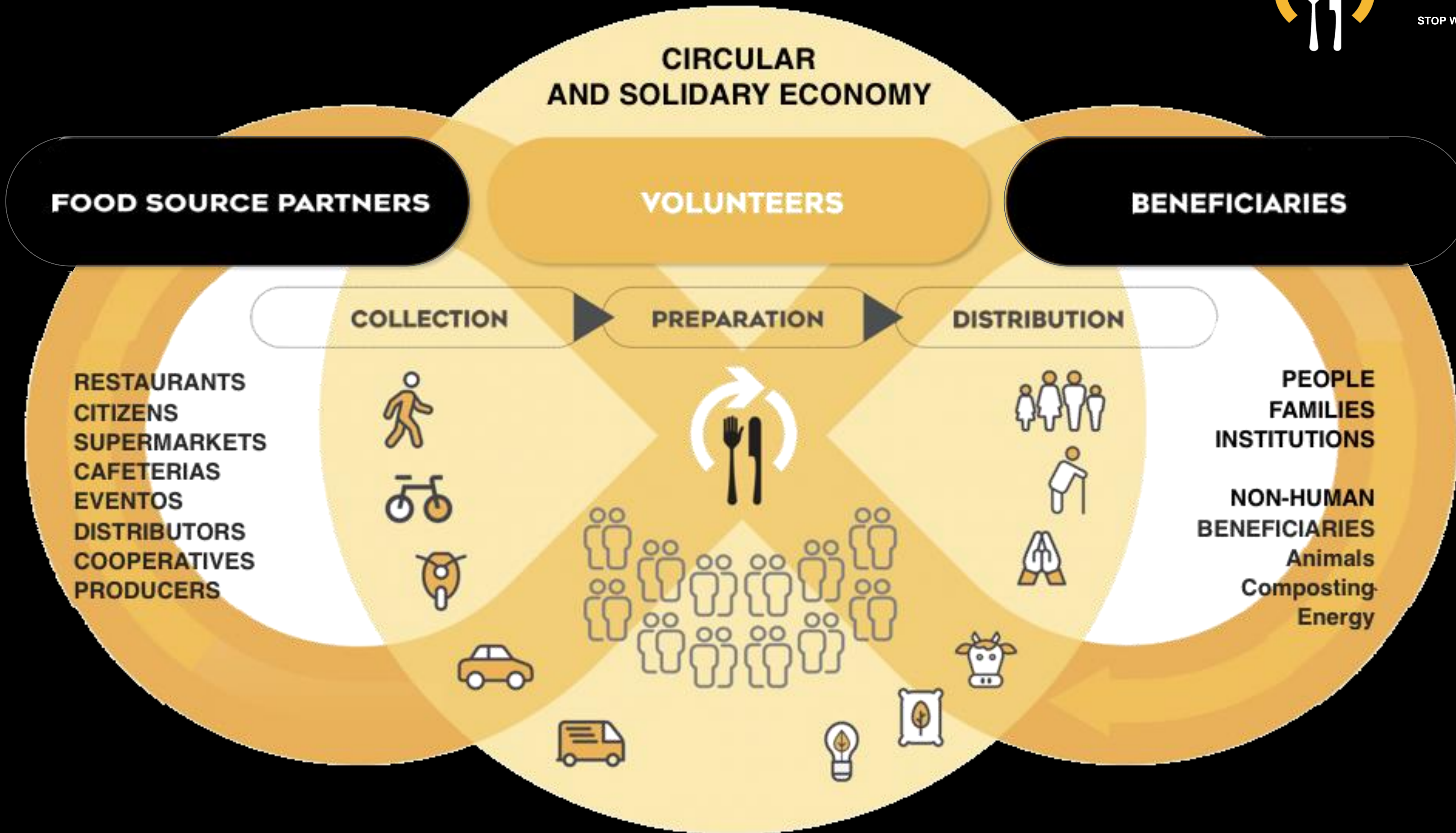


Other Stakeholders also benefit qualitatively: **Partners** are happy to embrace and fulfill their duty to social and environmental responsibility. **Beneficiaries**, being included and valued, come to understand that they are not alone and the **Community at large** are all witnesses to the possibility of a circular and solidary economy driving change in their own local neighborhood.

How it works ...

P
A
R
T
N
E
R
S

S
O
C
I
E
T
Y



Partners supporting volunteers drive sustainable change toward a more just society

Sustainability ¹



REFOOD

STOP WASTE - FEED PEOPLE



Sustainability is in Refood's DNA. Environmental, financial and social sustainability arise from our operative, community and ecological models.

Environmental sustainability is easy – every meal rescued defends our shared environment – while conscious, informed choices contribute to neutralizing our carbon footprint and completing our circular economy.

Sustainability ²



REFOOD

STOP WASTE - FEED PEOPLE



Financial Sustainability flows from our unique low-cost, high-productivity operational model (millions of meals rescued at 10 to 15 cents each), supported by a low-key, but invariably successful community out-reach effort (all invited, many included) which guarantees the modest operational costs of each local Center (being 100% volunteer and zero costs for food, insures a highly efficient economy).

Sustainability ³



REFOOD

STOP WASTE - FEED PEOPLE



Social sustainability comes from a low-threshold invitation to **volunteers** to participate for as little as two hours, once a week, while the continuation of that relationship is guaranteed by happiness. **Volunteer-managers**, enjoy an equally rewarding experience as a part of a participatory democracy where debate, consensus or voting decides each issue in a spirit of camaraderie.

Innovation



Innovation, in ReFood, is a continuous process – with each new innovation facilitating (or demanding) others. The ReFood micro-local neighborhood based model is our central innovation – rescuing food locally, neighbor to neighbor, opens the door to many other innovations.



Innovation +



REFOOD

STOP WASTE - FEED PEOPLE



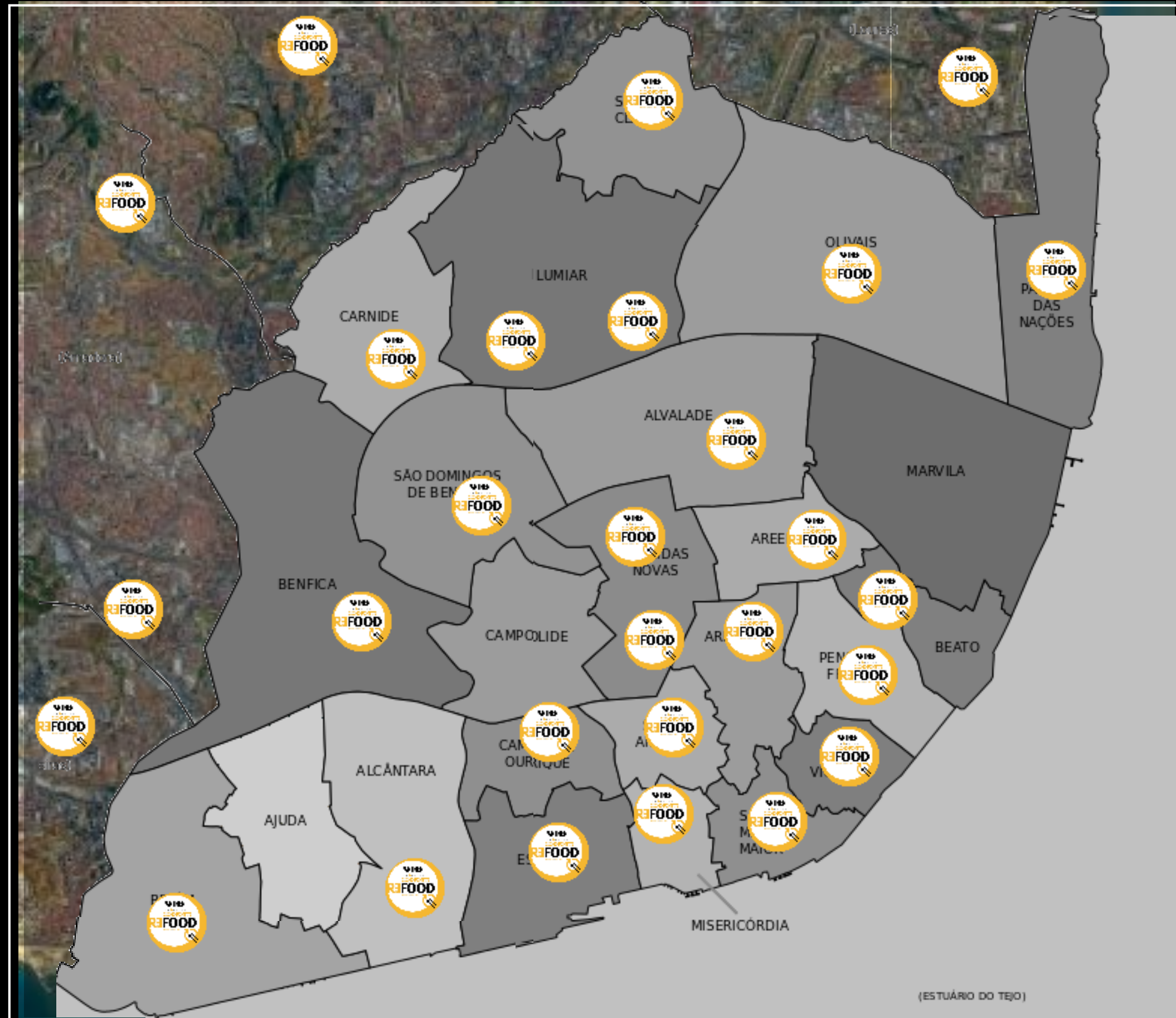
Being 100% Volunteer is an organizational innovation (bringing advantages and challenges). Our **Goodwill economy** is an innovation in assuring financial sustainability (it's counter-intuitive, but works). **Our exponential growth** has demanded innovation x innovation, as we have jumped from a local, to national, and now a global scale. It is the connecting thread that runs throughout our history.



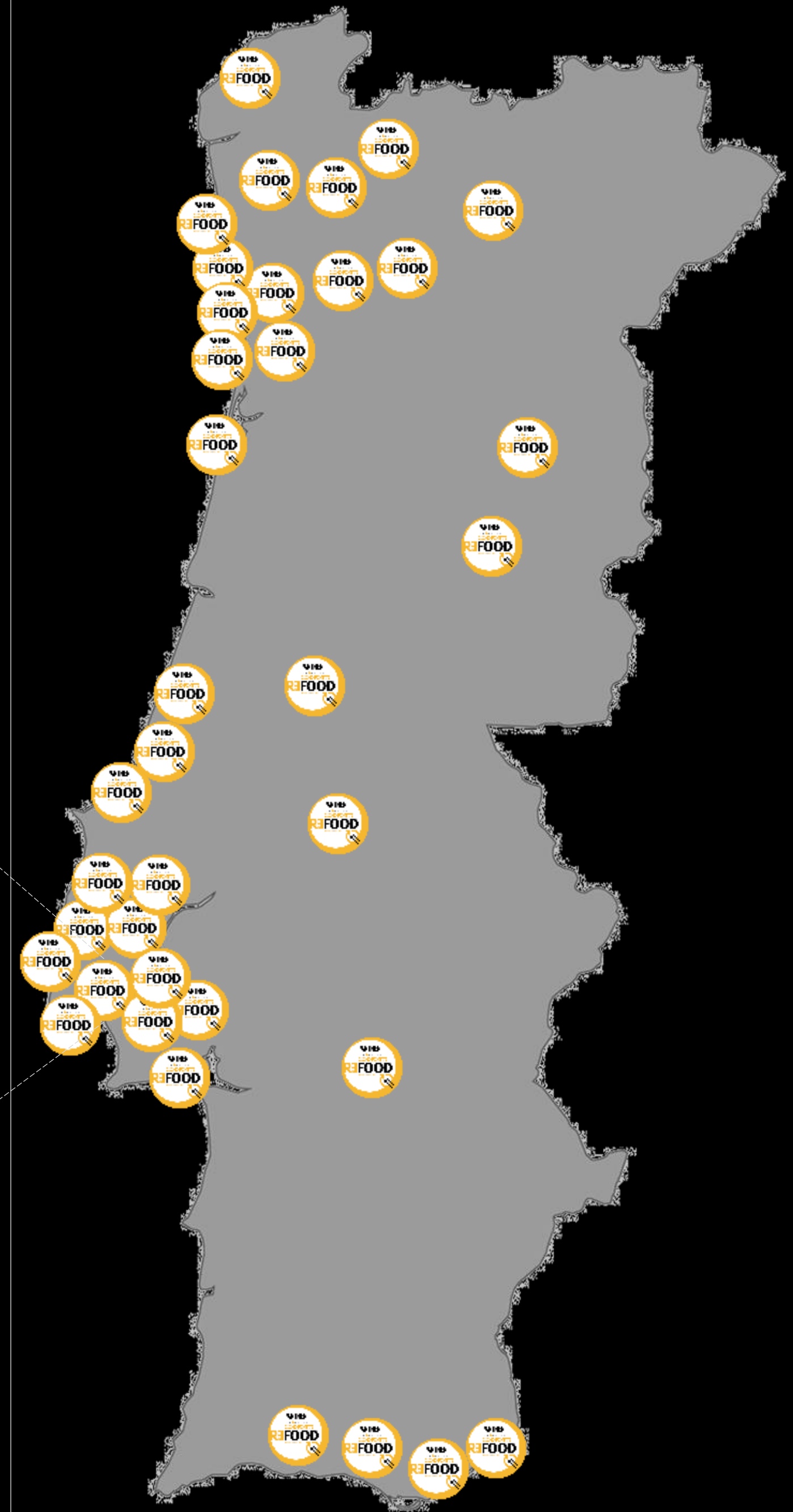




GROWTH OVER 10 YEARS: 60 REPLICATIONS



LISBON





- ALFRAGIDE
- COVILHIA
- VILA REAL
- CENTRO
- ALVALADE
- ARRIQUÊ
- ALENTEJO
- ALVALADE
- ARRIQUÊ
- ESTRELA
- MARVILA
- VILA NOVA DE GAIA
- SETÚBAL
- MINHO, MONTES
- LUMIÂN
- SANTA ERMESINDE
- BENFICA
- BRAGA 100%
- CASTELO DE MAIA
- OOVELAS
- MAFRA
- CORUCHE
- REGIÃO DE PORTO
- MONTE ABRÃO
- AVEIRO
- CASCAIS CPR
- ALMADA
- MASSARELOS
- PARQUE DAS NAÇÕES
- GALDAS DA RAINHA
- COIMBRA
- SÃO JOÃO DE MADEIRA
- REGIÃO DE SUL DO TEJO
- SENHORA DA HORA
- REGIÃO DE BEIRA LITORAL
- SANTO ANTÓNIO
- LEIRIA
- N. S. FÁTIMA
- REGIÃO DE LISBOA
- S. DOMINGOS DE BENFICA
- CASCAIS
- SACAVÉM
- REGIÃO DE MADR
- BELÉM
- SEIX



GROWTH & IMPACT

< 2019 >

Meals (rescued) > 2,250,000

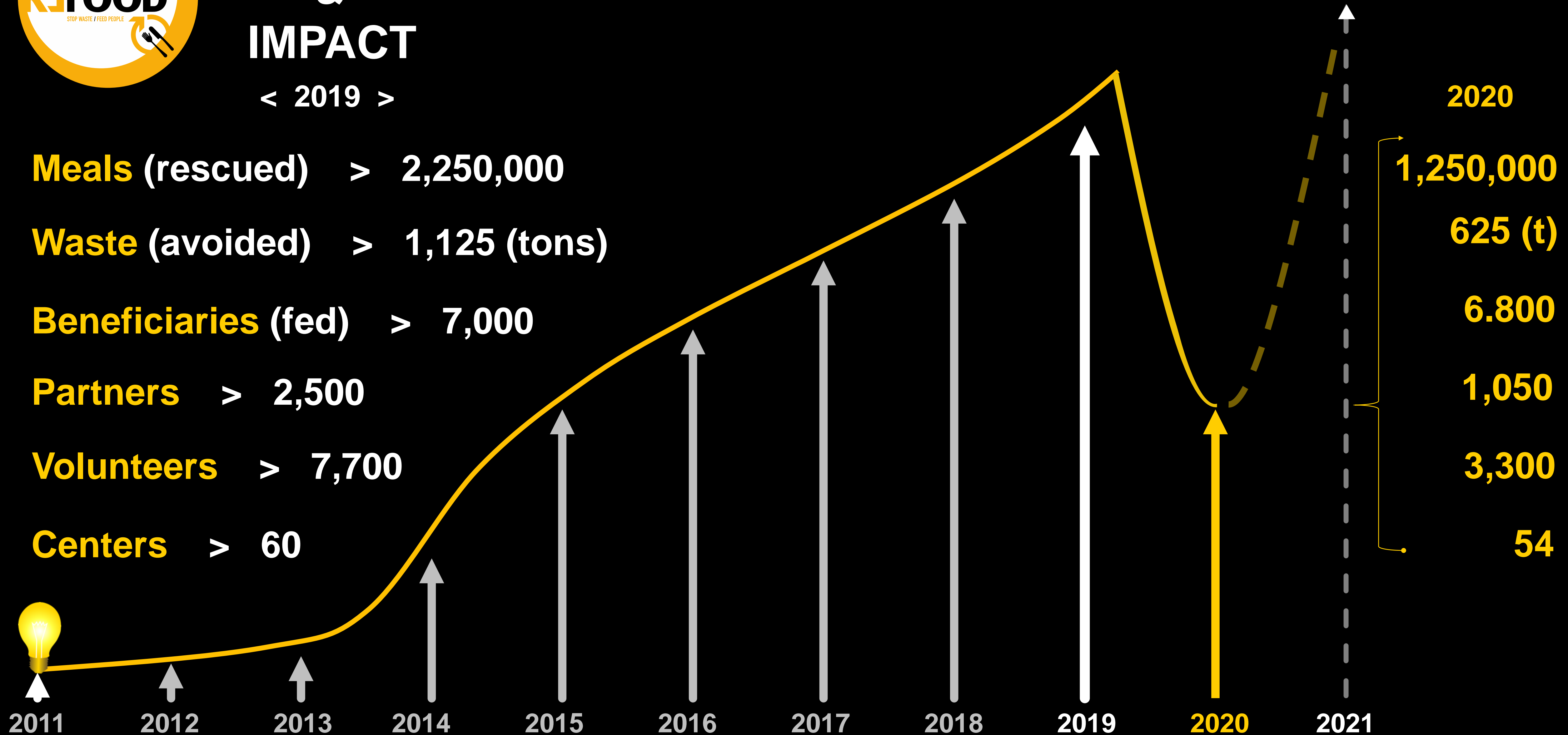
Waste (avoided) > 1,125 (tons)

Beneficiaries (fed) > 7,000

Partners > 2,500

Volunteers > 7,700

Centers > 60





UN Sustainable Development Goals

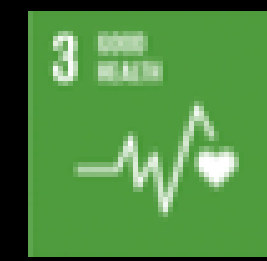
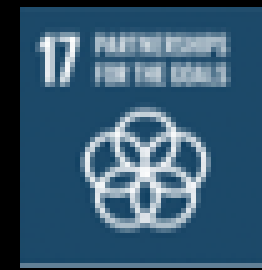
The Refood Movement ends food waste and hunger

in local communities by involving all local stakeholders

we rescue thousands of tons of good food to help preserve the environment

reverse food insecurity and improve health in thousands and thousands of families struggling with poverty

Refood is an innovative 100% volunteer, non-profit chain of local citizen-led democracies, poised to transform communities worldwide





FOOD

PARCEIRO DE UMA COMUNIDADE
REFOOD

PARCEIRO DE UMA COMUNIDADE
REFOOD

PARCEIRO DE UMA COMUNIDADE
REFOOD

PARCEIRO DE UMA COMUNIDADE
REFOOD

PARCEIRO DE UMA COMUNIDADE
REFOOD

PARCEIRO DE UMA COMUNIDADE
REFOOD

PARCEIRO DE UMA COMUNIDADE
REFOOD

PARCEIRO DE UMA COMUNIDADE
REFOOD

PARCEIRO DE UMA COMUNIDADE
REFOOD

PARTNER
IN A MORE CARING
COMMUNITY
REFOOD

NACIONAL

PARCEIRO DE UMA COMUNIDADE
SÃO VICENTE
REFOOD

PARCEIRO DE UMA COMUNIDADE
CASCAIS
REFOOD

PARCEIRO DE UMA COMUNIDADE
ALGARVE
REFOOD

PARCEIRO DE UMA COMUNIDADE
SACAVEM
REFOOD

PARCEIRO DE UMA COMUNIDADE
REFOOD

PARCEIRO DE UMA COMUNIDADE
REFOOD

PARCEIRO DE UMA COMUNIDADE
REFOOD

PARCEIRO DE UMA COMUNIDADE
REFOOD

PARCEIRO DE UMA COMUNIDADE
REFOOD

PARCEIRO DE UMA COMUNIDADE
REFOOD

PARCEIRO DE UMA COMUNIDADE
REFOOD

PARCEIRO DE UMA COMUNIDADE
REFOOD

PARCEIRO DE UMA COMUNIDADE
REFOOD

PARCEIRO DE UMA COMUNIDADE
REFOOD

PARCEIRO DE UMA COMUNIDADE
REFOOD

PARCEIRO DE UMA COMUNIDADE
REFOOD

PARCEIRO DE UMA COMUNIDADE
REFOOD

PARCEIRO DE UMA COMUNIDADE
REFOOD

PARCEIRO DE UMA COMUNIDADE
REFOOD

PARCEIRO DE UMA COMUNIDADE
REFOOD

PARCEIRO DE UMA COMUNIDADE
REFOOD

THE REFOOD MOVEMENT

SAYS

THANK YOU!

FOR YOUR KIND ATTENTION



REFOOD

STOP WASTE - FEED PEOPLE