



Food and
Veterinary Service
Republic of Latvia

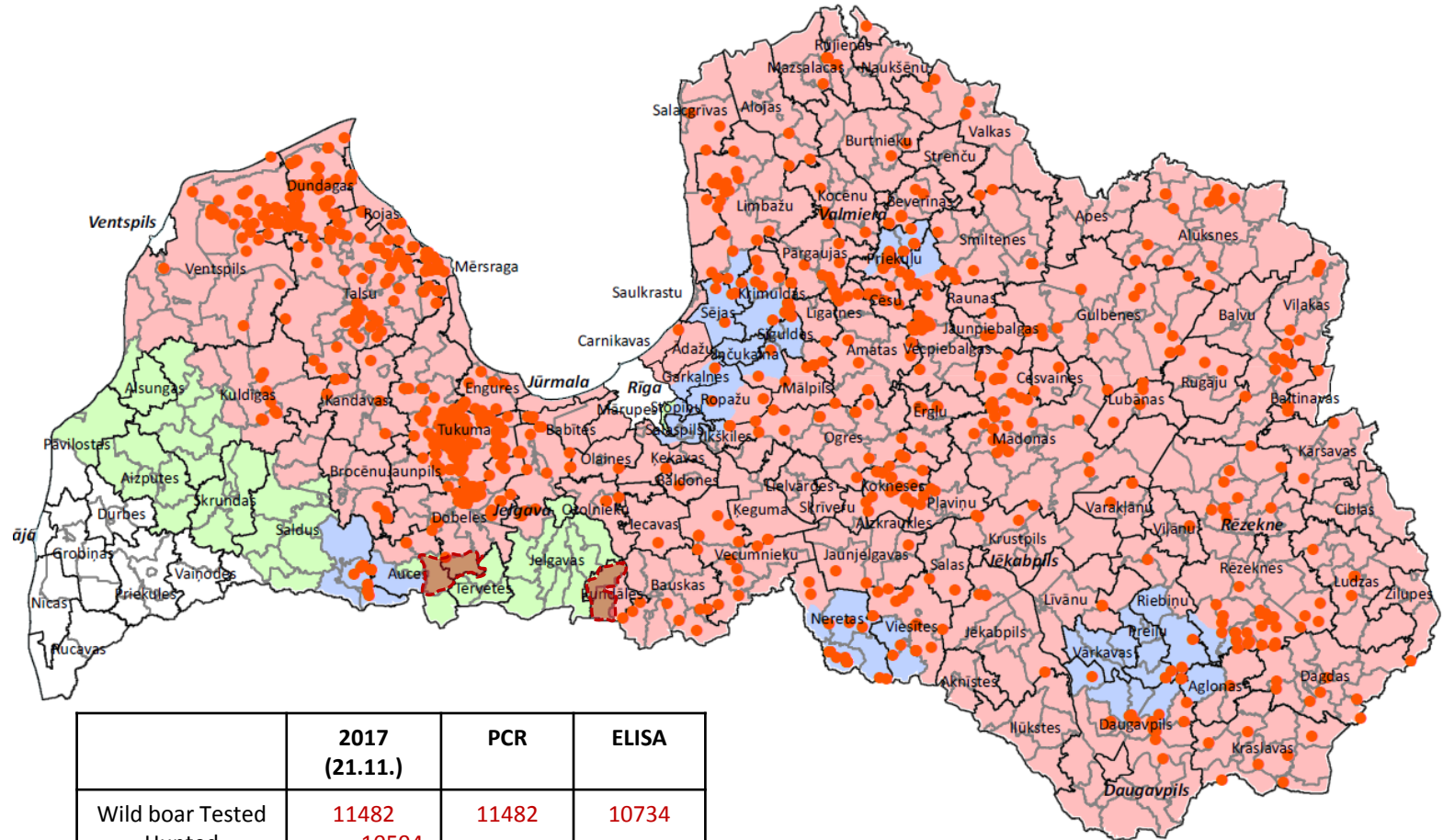
ASF epidemiological situation in Latvia – 2017 (update)

PAFF meeting,
Brussels, 30.11.2017.



Food and
Veterinary Service
Republic of Latvia

ASF cases in 2017 (21.11.2017)



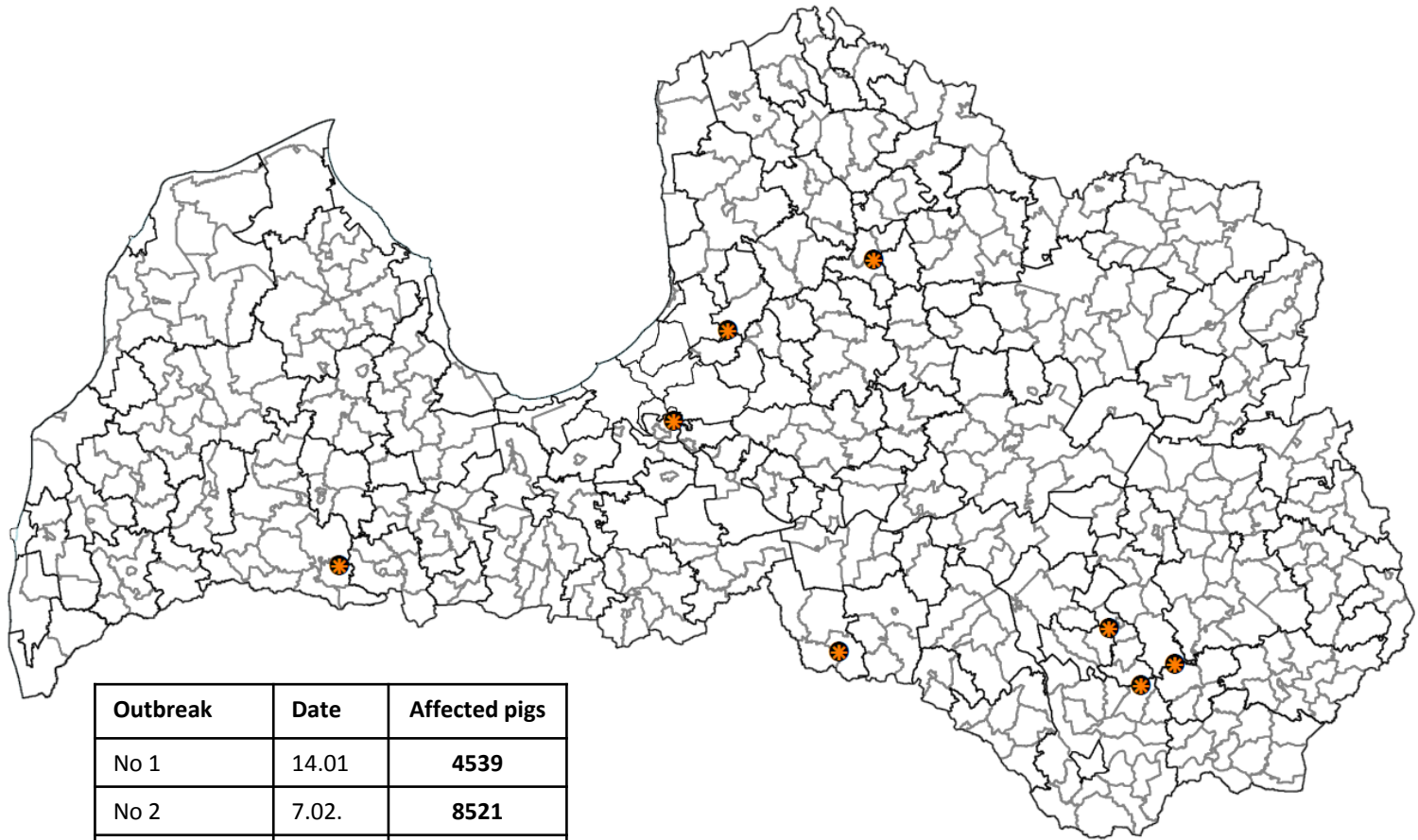
	2017 (21.11.)	PCR	ELISA
Wild boar Tested	11482	11482	10734
Hunted	10594		
Found dead	888		
Wild boar cases	1221	938	283
Hunted	522	2.1%	2.5%
Found dead	699	79.6%	

- Part 1
- Part 2
- Part 3
- WB cases 2017

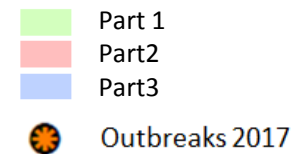


Food and
Veterinary Service
Republic of Latvia

Outbreaks in 2017 (21.11.2017)



Outbreak	Date	Affected pigs
No 1	14.01	4539
No 2	7.02.	8521
No 3	12.07.	3
No 4	14.07.	5818
No 5	3.09.	9
No 6	13.09.	23
No 7	26.09.	3
No 8	10.10.	44





Food and
Veterinary Service
Republic of Latvia

Thank you for your attention!