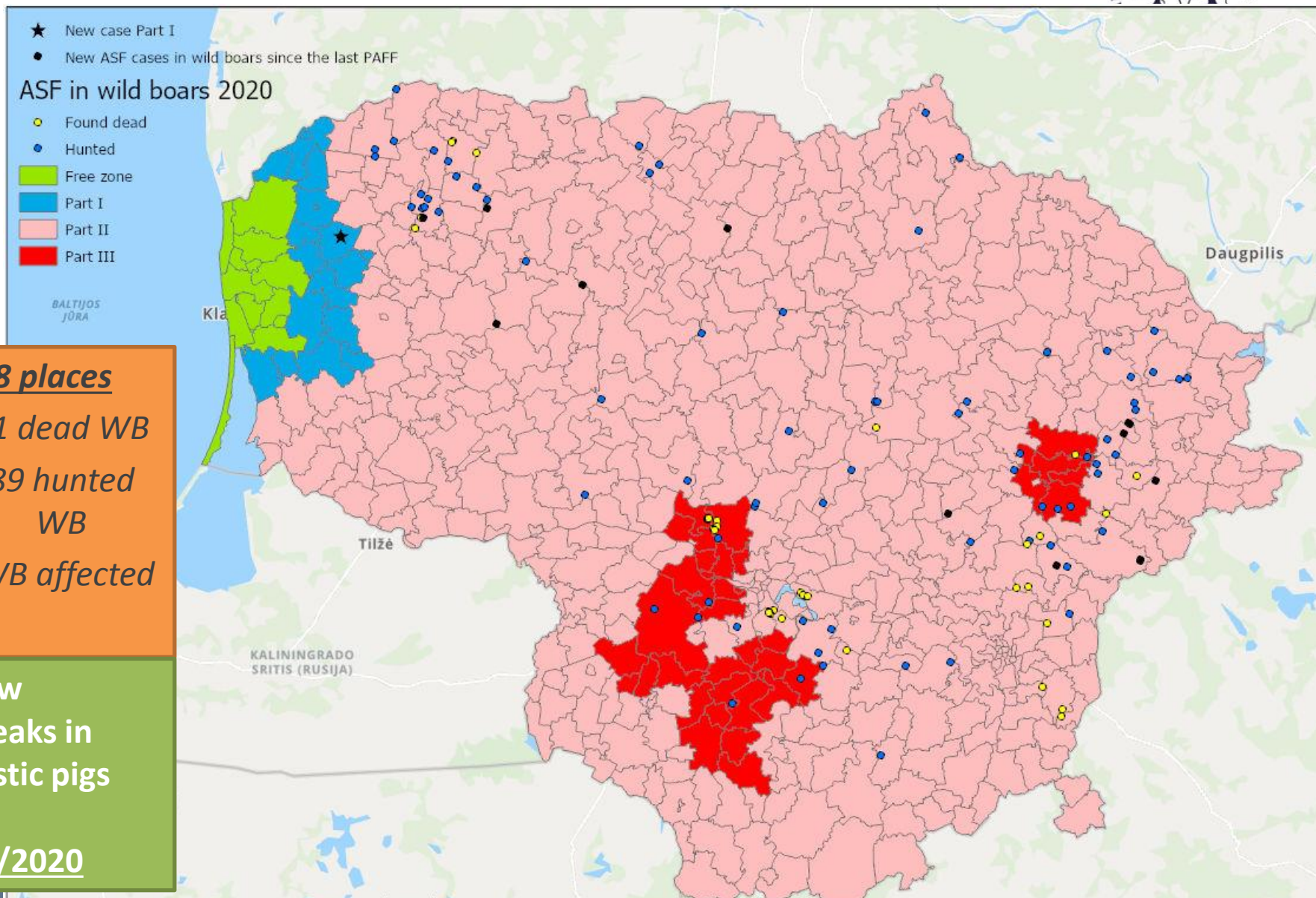




African swine fever in Lithuania (update of the situation)

15 July 2020
State Food and Veterinary Service
Lithuania

ASF CASES IN WB 2020



THE NEW CASE OF ASF IN PART I (ADNS 2020/115)



The wild boar (male, 24 month of age) was hunted.

Antibodies have been confirmed by ELISA and IPT.

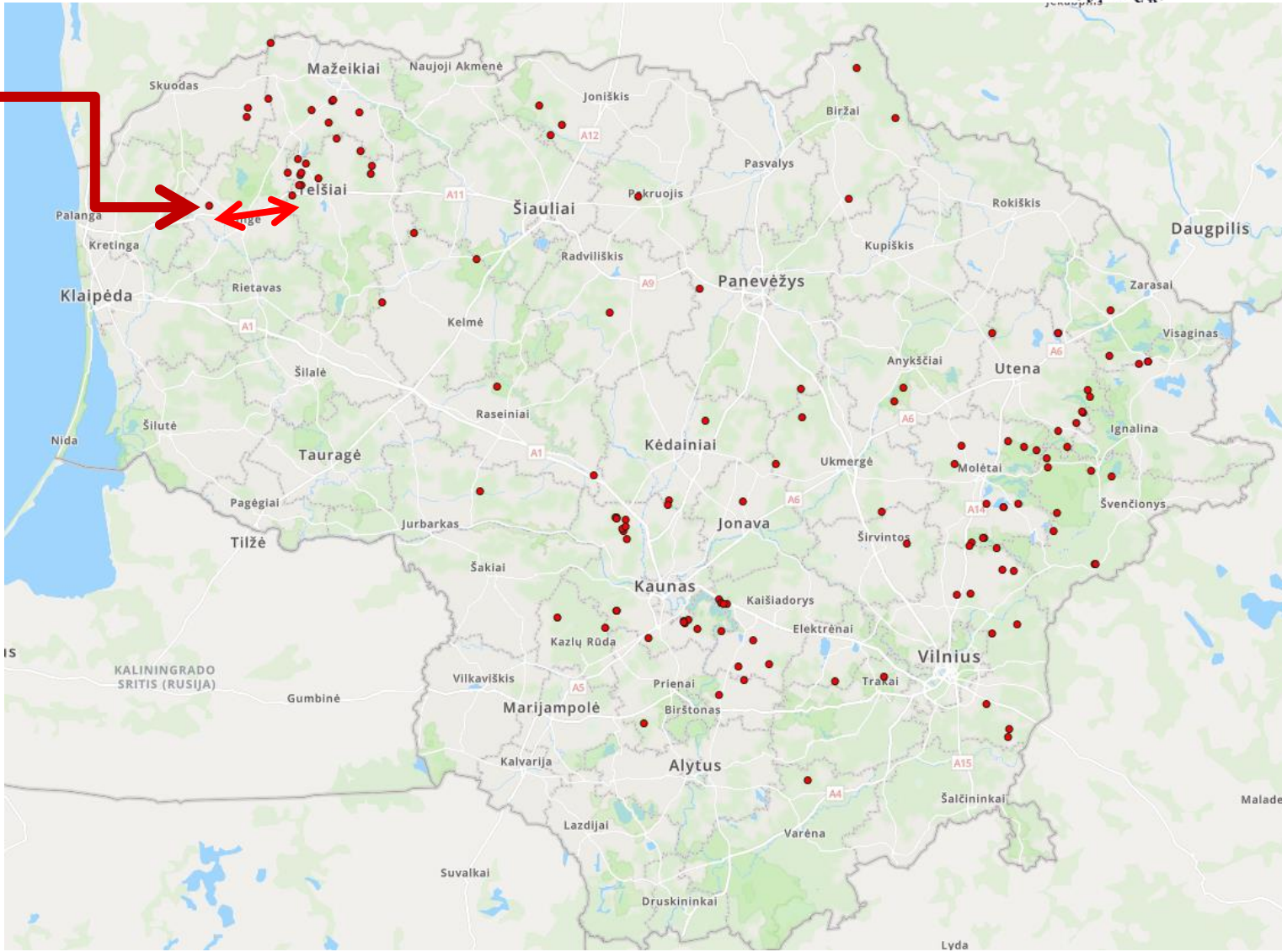
The nearest positive ASF case was found approximately 25 km on 13 March 2020 (ADNS 2020/59).

THE NEW CASE OF ASF IN PART I (ADNS 2020/115)



Seropositive

Active patrolling (once per week) is carried out for the purpose to find out whether carcasses are in place in order to enhance the passive surveillance.

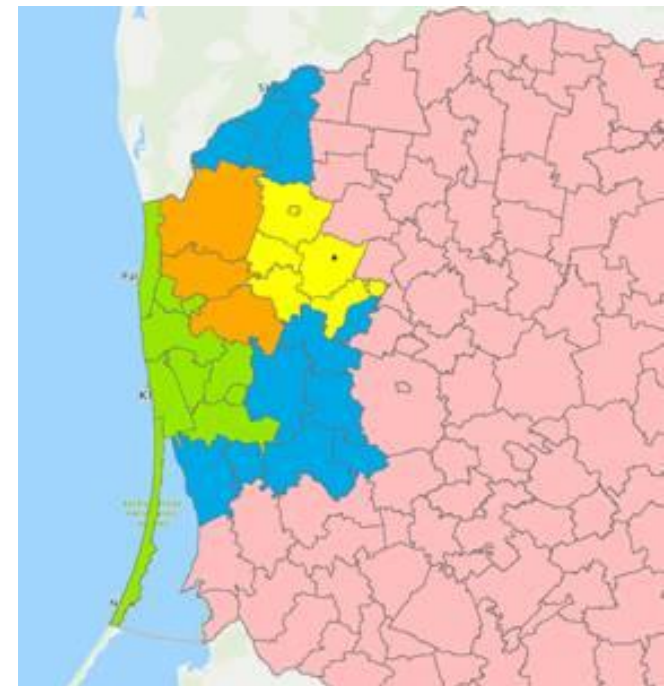
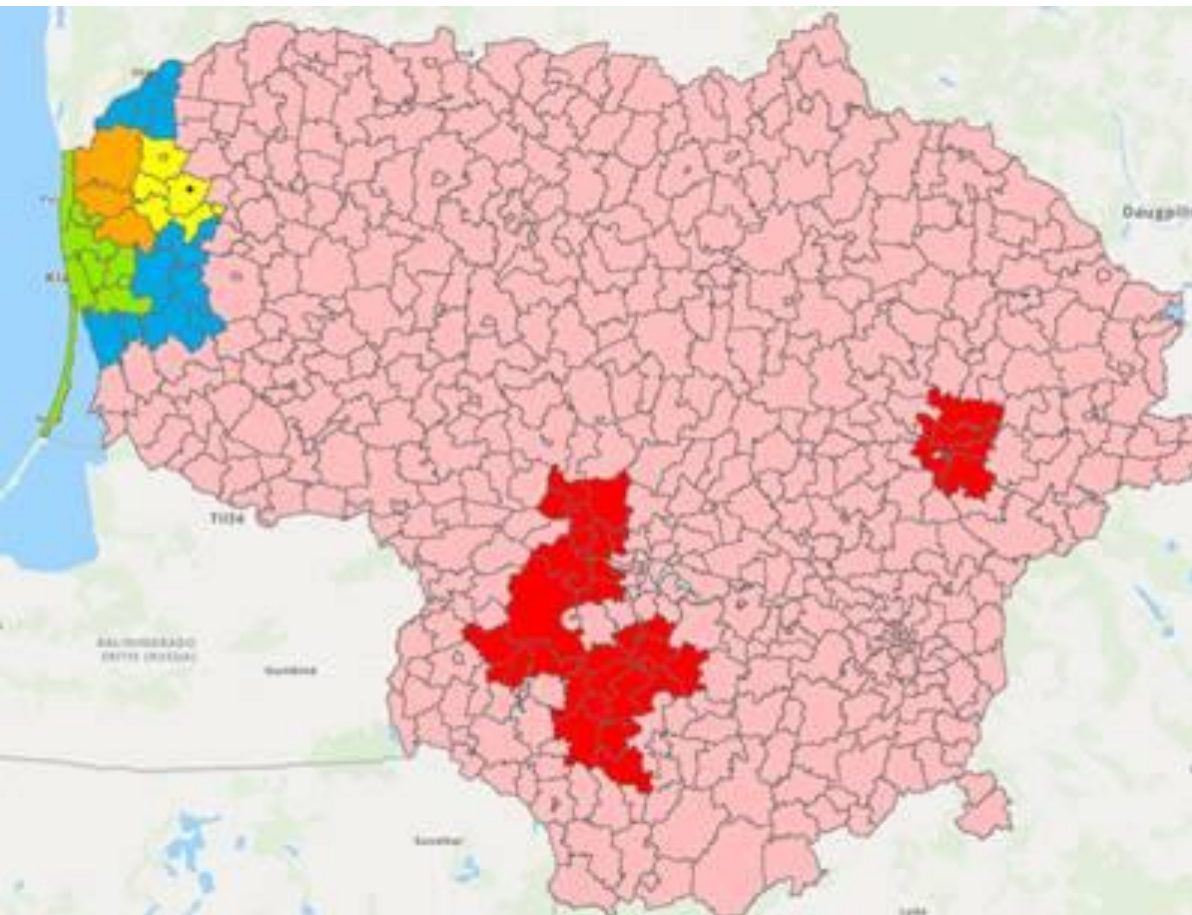


Regionalization



Enlarged **PART I in orange** (Kretingos r. sav. Imbarės sen., Kūlupėnų sen., Kartenos sen.)

Enlarged **PART II in yellow** (Plungės r. sav. Nausodžio sen. dalis nuo kelio Nr. 166 į šiaurės vakarus, Plungės miesto sen. ir Šateikių sen.)





Valstybinė maisto ir veterinarijos tarnyba
Siesikų g. 15D, Vilnius

