



Food and
Veterinary Service
Republic of Latvia

ASF epidemiological situation in Latvia – 2020 (updated information)

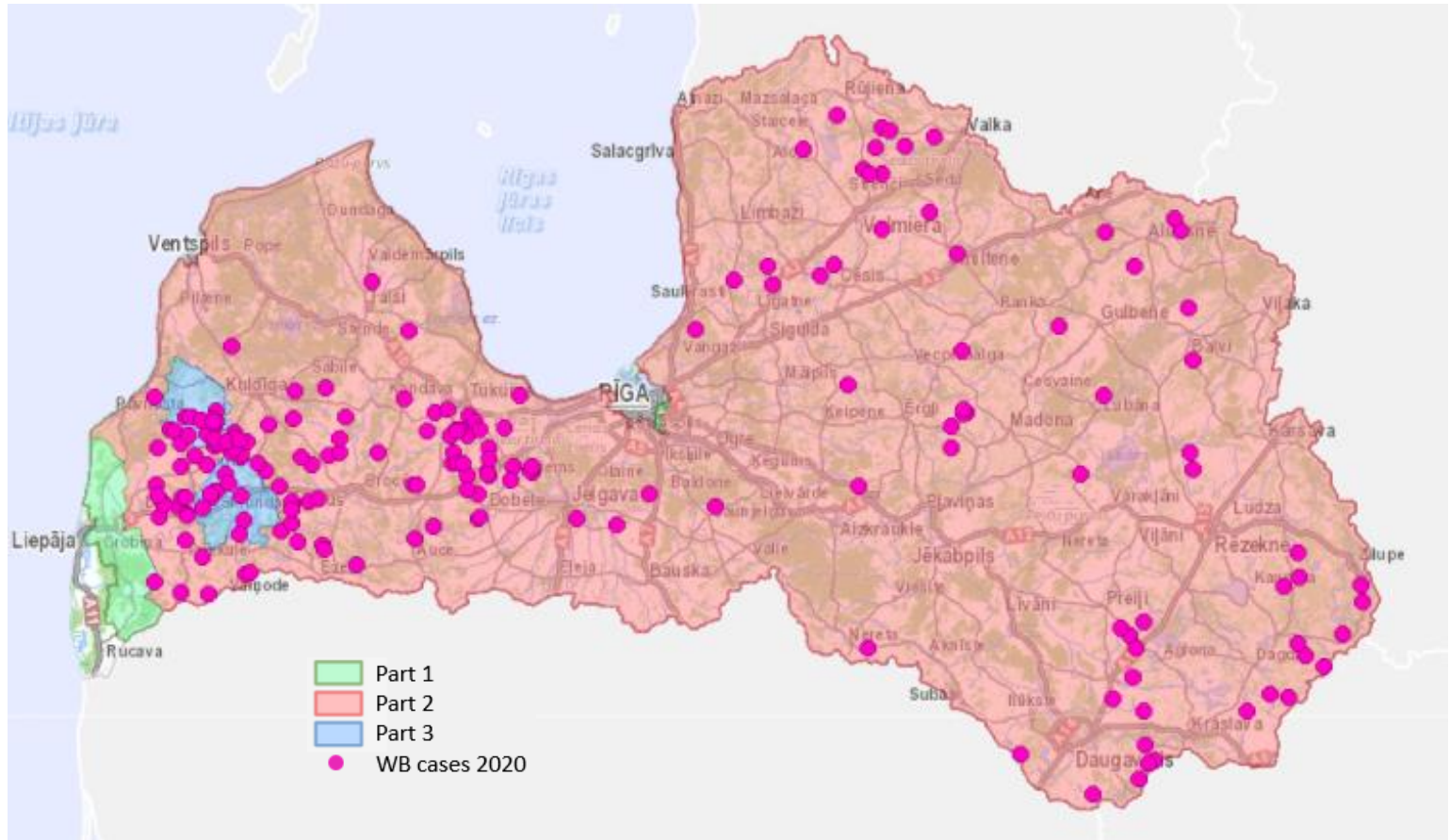
SCoPAFF

23/24.09.2020



Food and
Veterinary Service
Republic of Latvia

Wild boar cases in 2020 (till 21st September)



Sampling and testing:

10 464 - samples from hunted wild boar

117 - samples from found dead wild boar

Totally: **253** ASF cases in wild boar (178 hunted, 75 found dead).

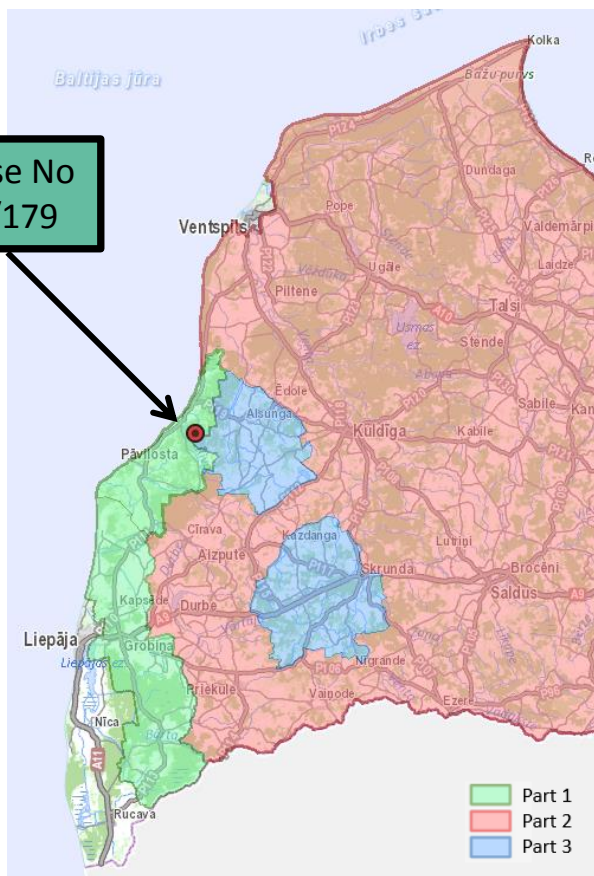
ASF virus positive cases - **108**, seropositive cases – **145**.



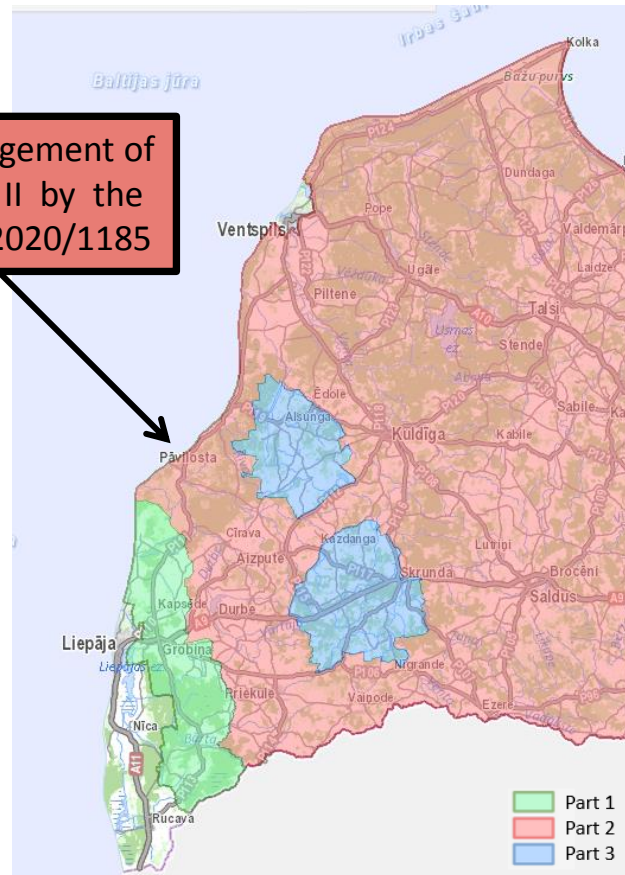
Food and
Veterinary Service
Republic of Latvia

Enlargement of Part II and establishing of new Part III

WB case No
2020/179



Enlargement of
Part II by the
CID 2020/1185

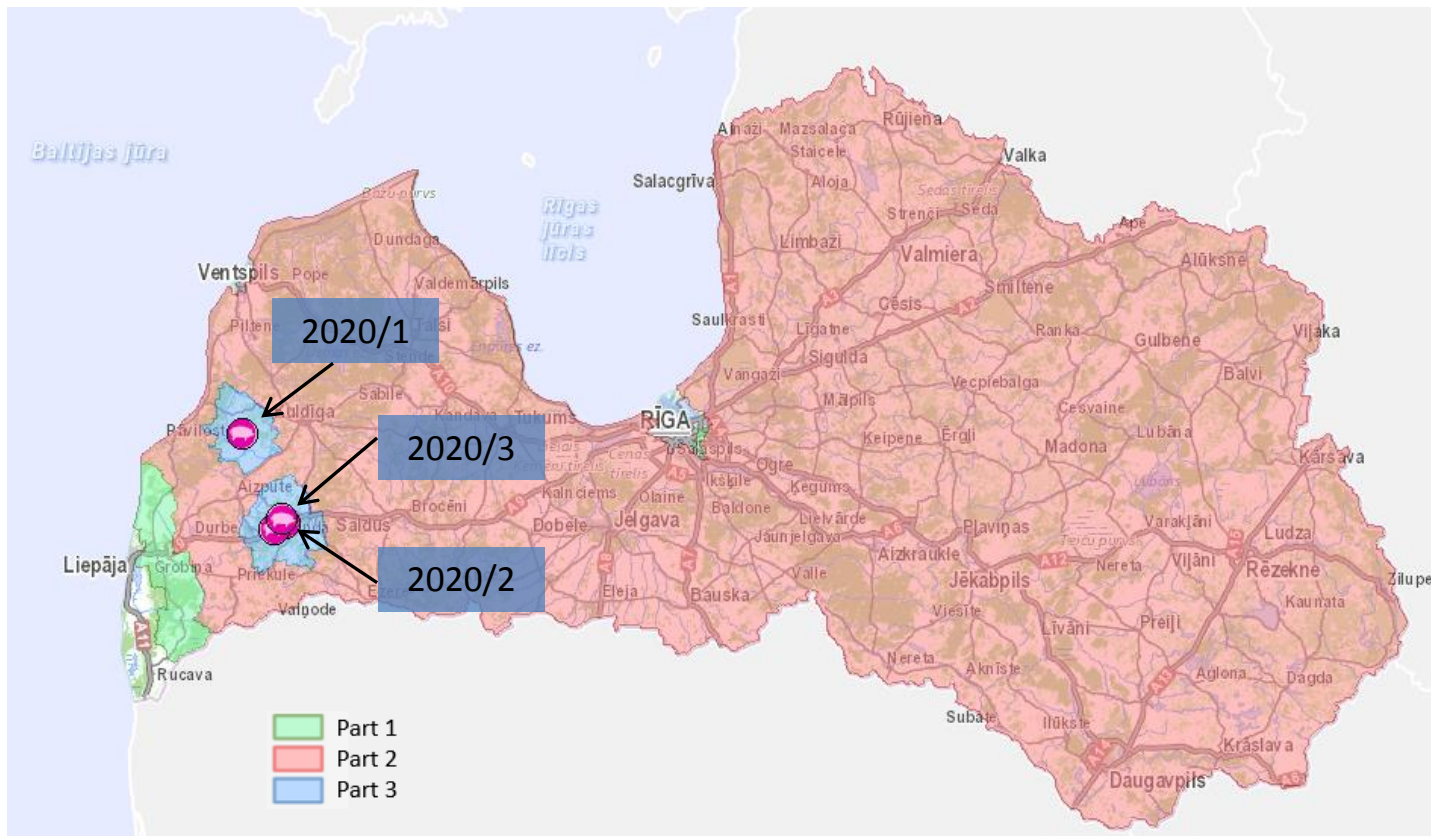


ASF case in dead wild boar was confirmed on 3rd August in the area listed in Part I (in the county of Ventspils) – subsequently Part II was enlarged
Additionally two ASF outbreaks occurred in Skrunda county – there is established one new Part III



Food and
Veterinary Service
Republic of Latvia

ASF outbreaks in 2020

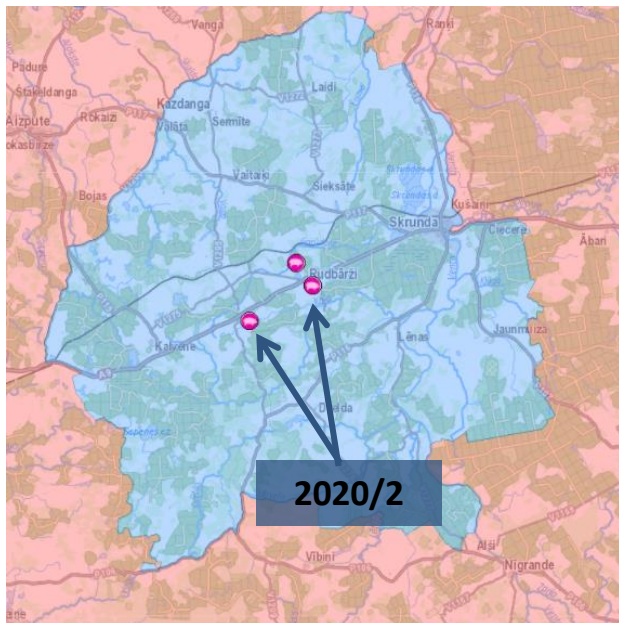


Outbreak	Location	Date of confirmation	No. of infected pigs
2020/1	Kuldīgas county Gudenieku parish	06.07.	31
2020/2	Skrundas county Rudbāržu parish	17.07.	1785
2020/3	Skrundas county Rudbāržu parish	17.07.	9779



Food and
Veterinary Service
Republic of Latvia

Outbreak No. **2020/2** (17.07.2020.)



- Outbreak in Skrudas county Rudbāržu parish
- Commercial farm with 1785 pigs kept in two separate locations (3 km far from each other)
- Outbreak was confirmed in the framework of enhanced passive surveillance system
- Samples of dead sow delivered to the NRL for testing
- Laboratory confirmation – on 17th of July
- Depopulation & disposal - 18th - 19th July
- Final disinfection - 4th August
- 16.09.2020. removal of restrictions

All measures according to Council Directive 60/2002/EC were in place till 16.09.2020.

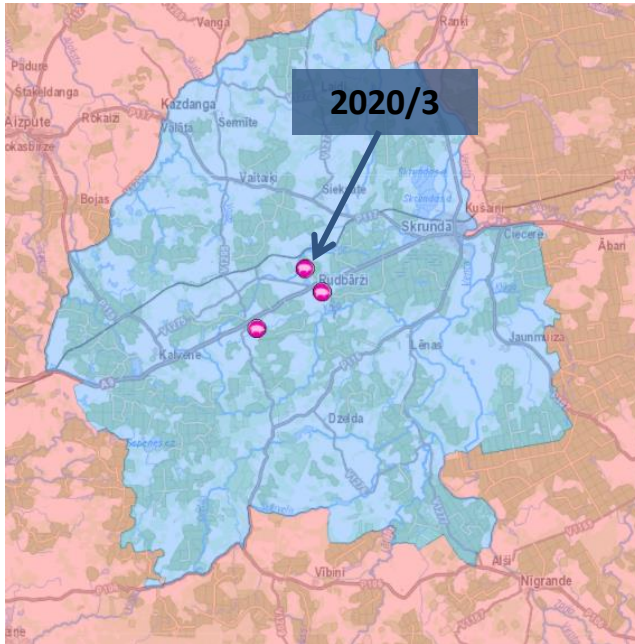
Summary of epidemiological investigations:

- many infected wild boar in a particular area
- no direct contact between pigs and wild boar
- risk of contamination of the farm territory
- the source of ASF virus introduction remains unclear



Food and
Veterinary Service
Republic of Latvia

Outbreak No. 2020/3 (17.07.2020.)



- Outbreak in Skrudas county Rudbāržu parish
- Affected commercial farm with 9779 pigs located within a short distance from outbreak No. 2020/2
- Outbreak was confirmed in the framework of enhanced passive surveillance system
- Samples of two dead sows delivered to the NRL for testing
- Laboratory confirmation - on 17th of July
- Depopulation & disposal - 20th - 31st July
- Final disinfection - ongoing

All measures according to Council Directive 60/2002/EC are in place

Summary of epidemiological investigations:

- many infected wild boar in a particular area
- no direct contact between pigs and wild boar
- contamination risk of the territory during reconstruction of the farm (a big number of vehicles, equipment and workers involved in reconstruction)



Food and
Veterinary Service
Republic of Latvia

Thank you for your attention!