



AHW.A.03.(POLAND).(SF).

# African swine fever in Poland – update



SCPAFF 23 March 2023



**NO OUTBREAKS IN PIGS  
in 2023**

**Last outbreak confirmed on  
06.09.2022**

# ASF outbreaks in WB 2023 22/03/2023



**824 outbreaks in WB**



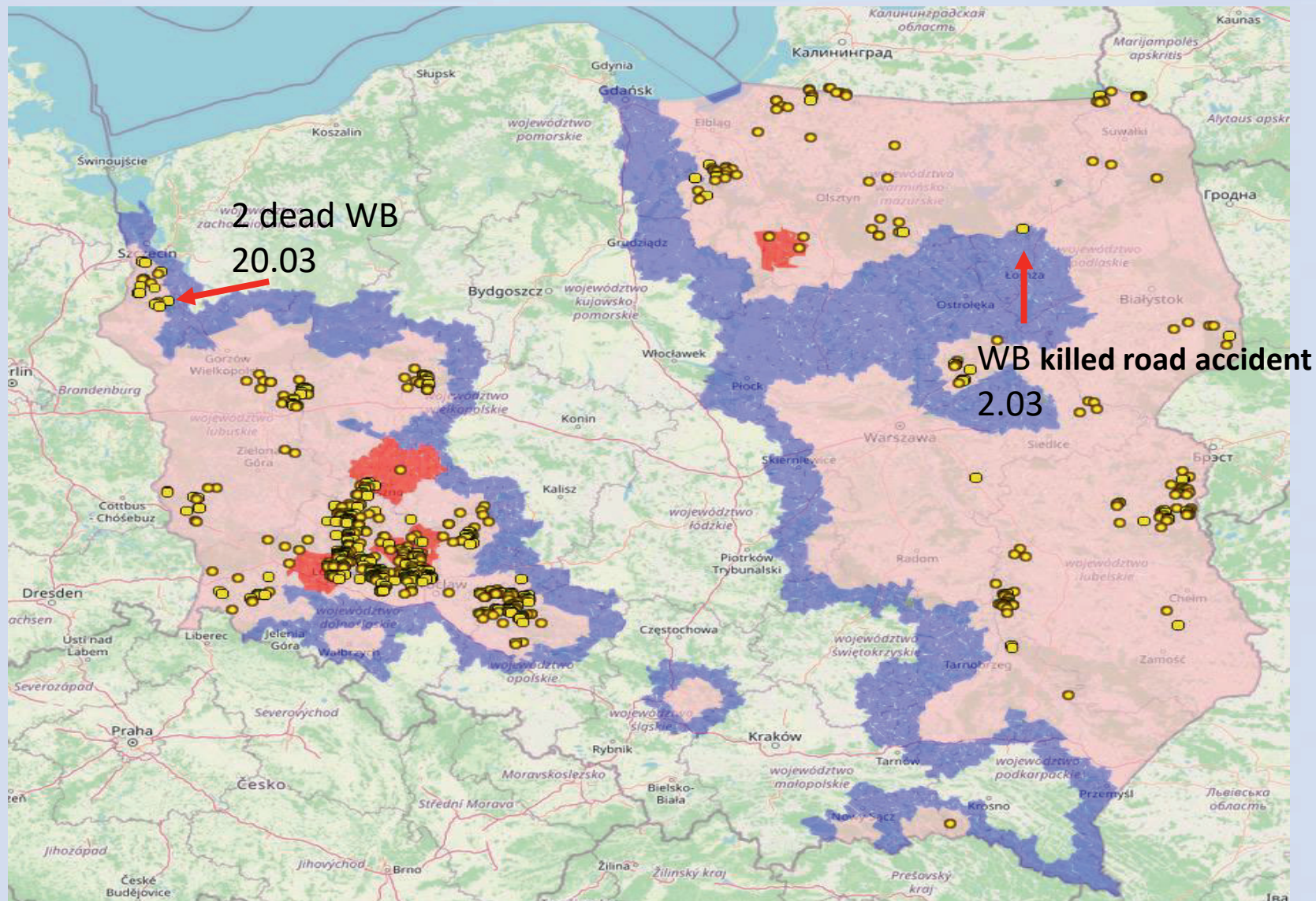
voivodeship	no. of outbreaks in WB	no. of WB positive
dolnośląskie	458	756
lubelskie	73	120
lubuskie	40	62
mazowieckie	21	29
opolskie	93	147
podkarpackie	4	6
podlaskie	16	24
pomorskie	13	26
warmińsko-mazurskie	47	55
wielkopolskie	43	53
zachodniopomorskie	16	34
<b>summary</b>	<b>824</b>	<b>1312</b>

<b>dead</b>	<b>1024</b>
<b>shot</b>	<b>284</b>
<b>killed in road accidents</b>	<b>4</b>
<b>ethanized</b>	<b>0</b>



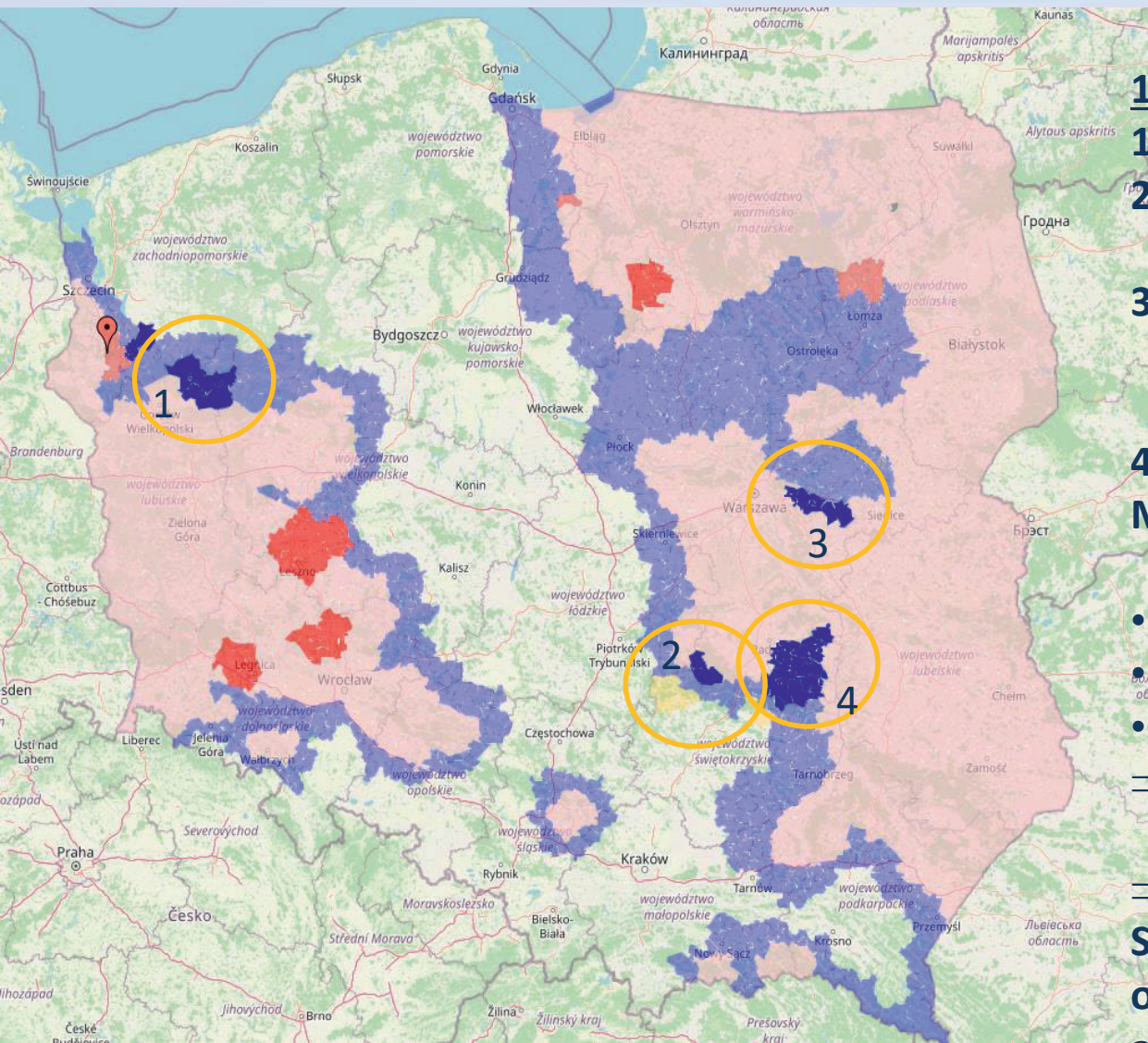


# Situation in wild boar





# Reversion of RZ II and I



**1 and 2- no ASF outbreaks ever**

**1- reversion to RZ I**

**2- reversion to RZ II and lifting RZ**

**3-last outbreak confirmed in 2020  
reversion to RZ I**

**4 – area of districts in  
Mazowieckie =>**

**last outbreaks:**

- lipski - 27.12.2019
- zwoleński - 22.09.2019
- radomski - 03.06.2020

**=> Reversion to RZ I**

**and**

**=> Świętokrzyskie =>**

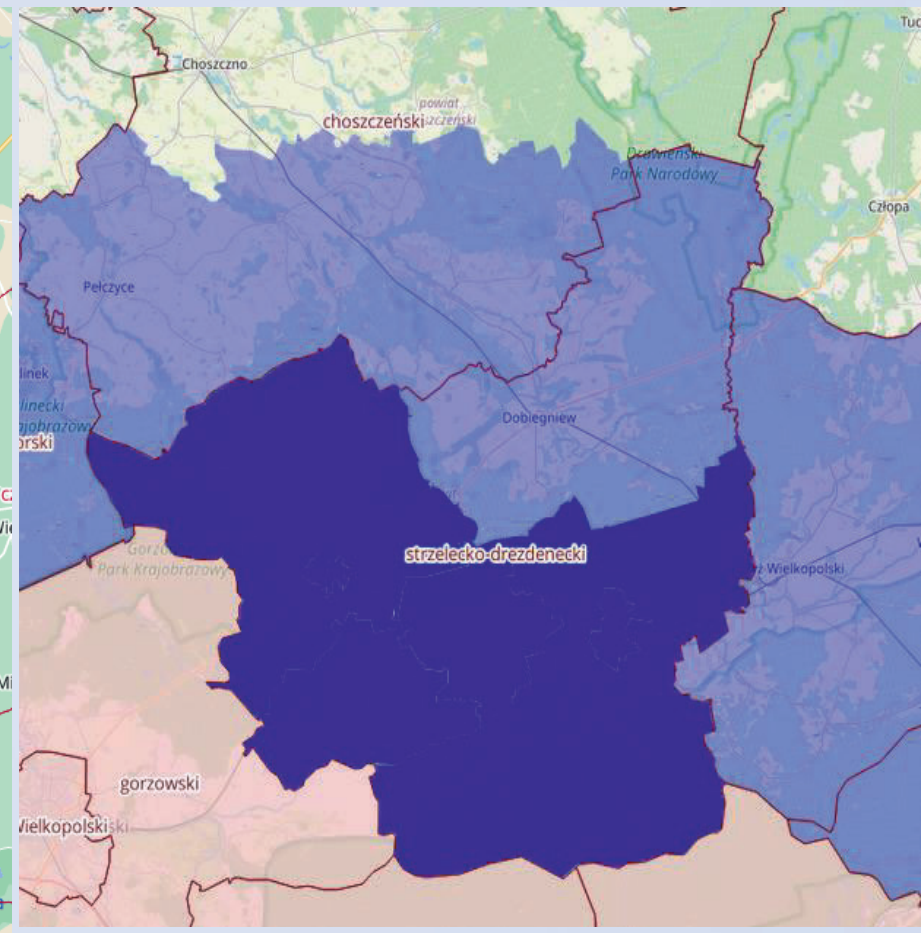
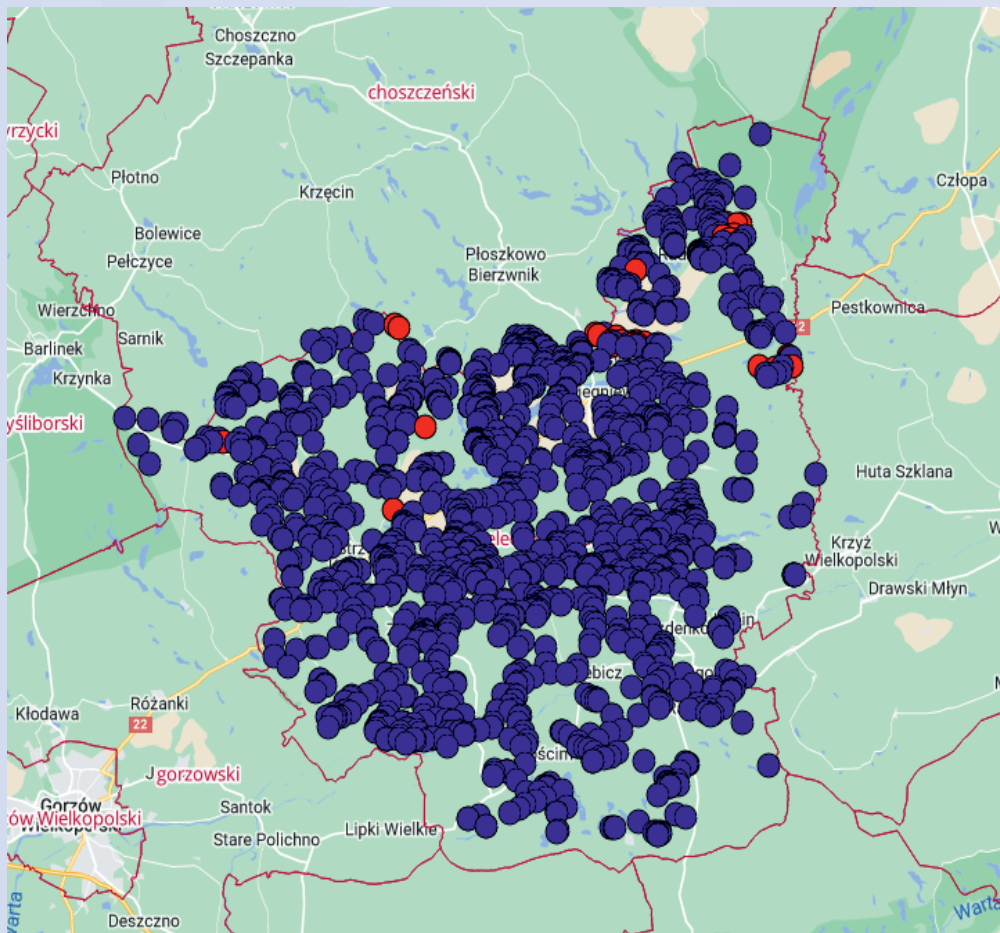
**Starachowicki districts – no ASF  
outbreaks = > reversion to RZ I  
and lifting RZ**





# 1. strzelecko- drezdenecki district

## reversion to RZ I in lubuskie region



Map with the distribution of wild boar sampled for ASF within last year

(red dots are not ASF positive – they are waiting for approval in the system by DVO)



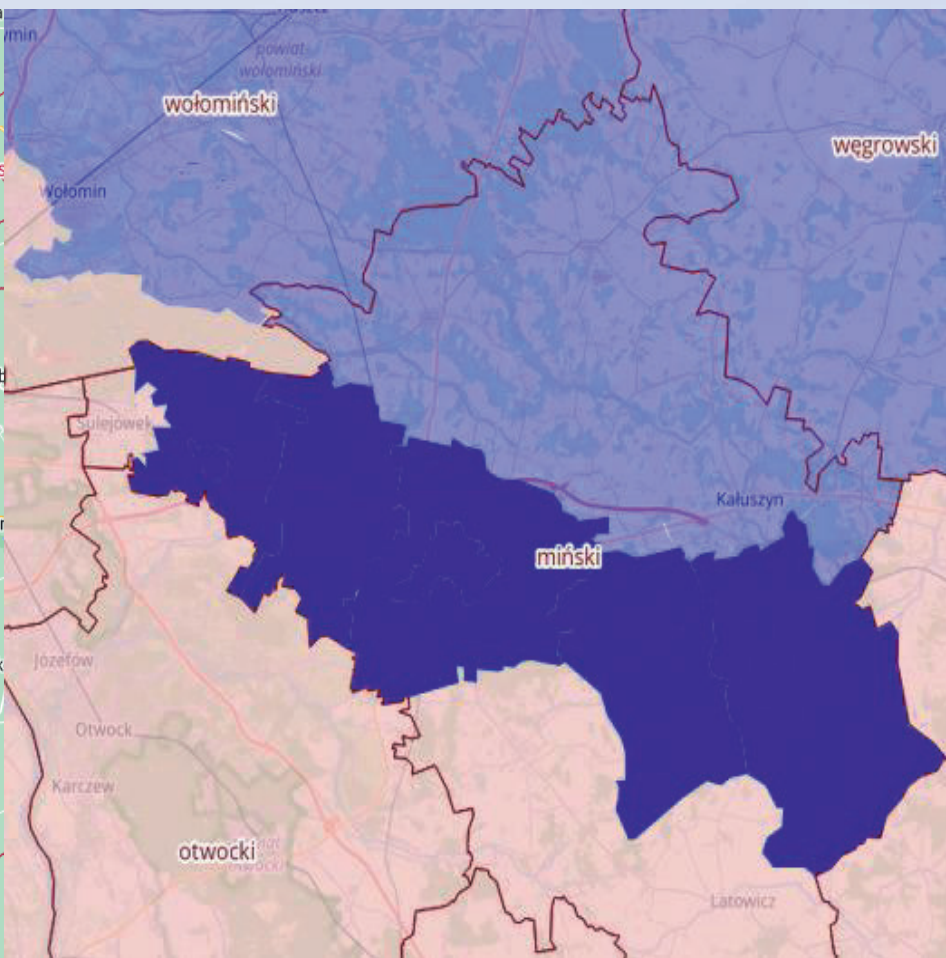
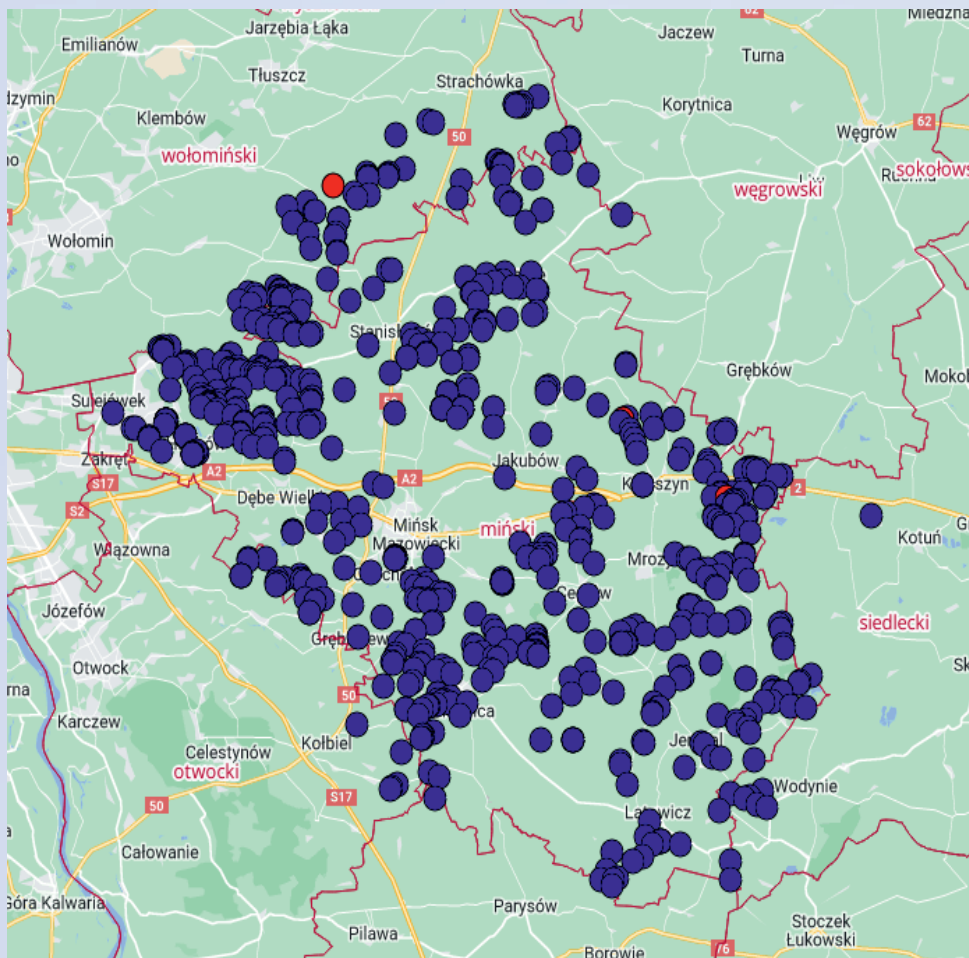


# 3. miński district



reversion to RZ I in mazowieckie region

last outbreak in WB confirmed in 2020



Map with the distribution of wild boar sampled for ASF within last year  
(red dots are not ASF positive – they are waiting for approval in the system by DVO)

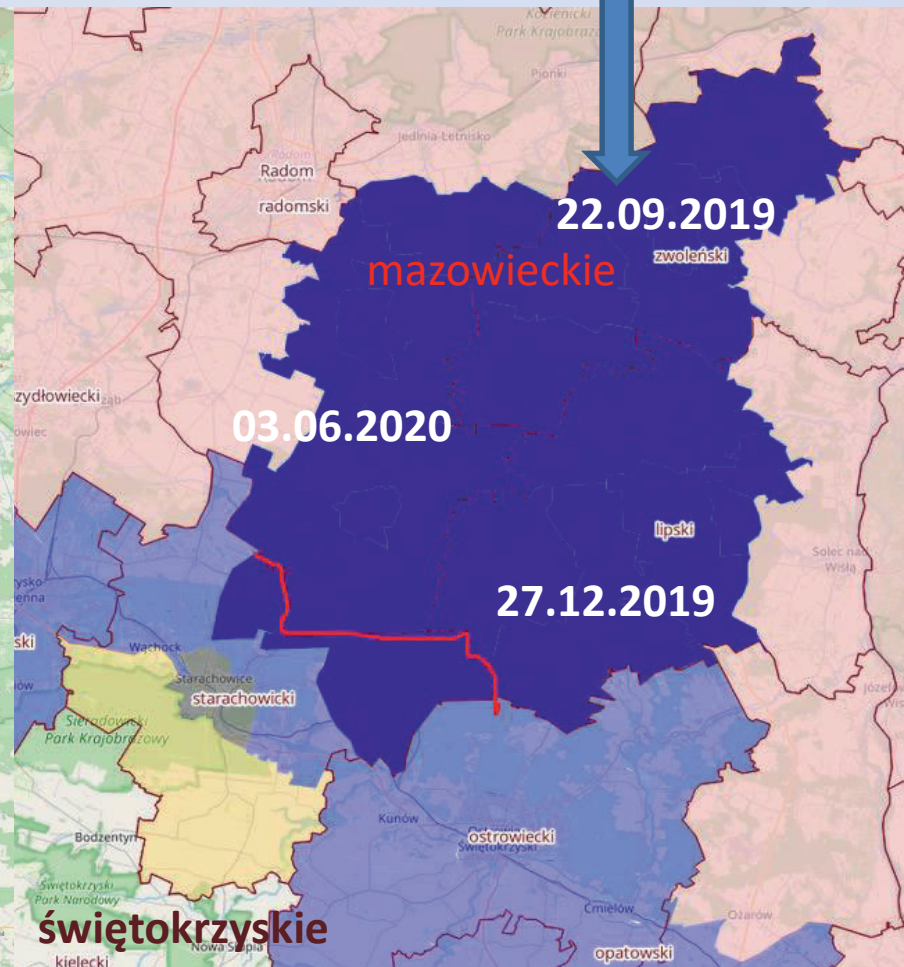
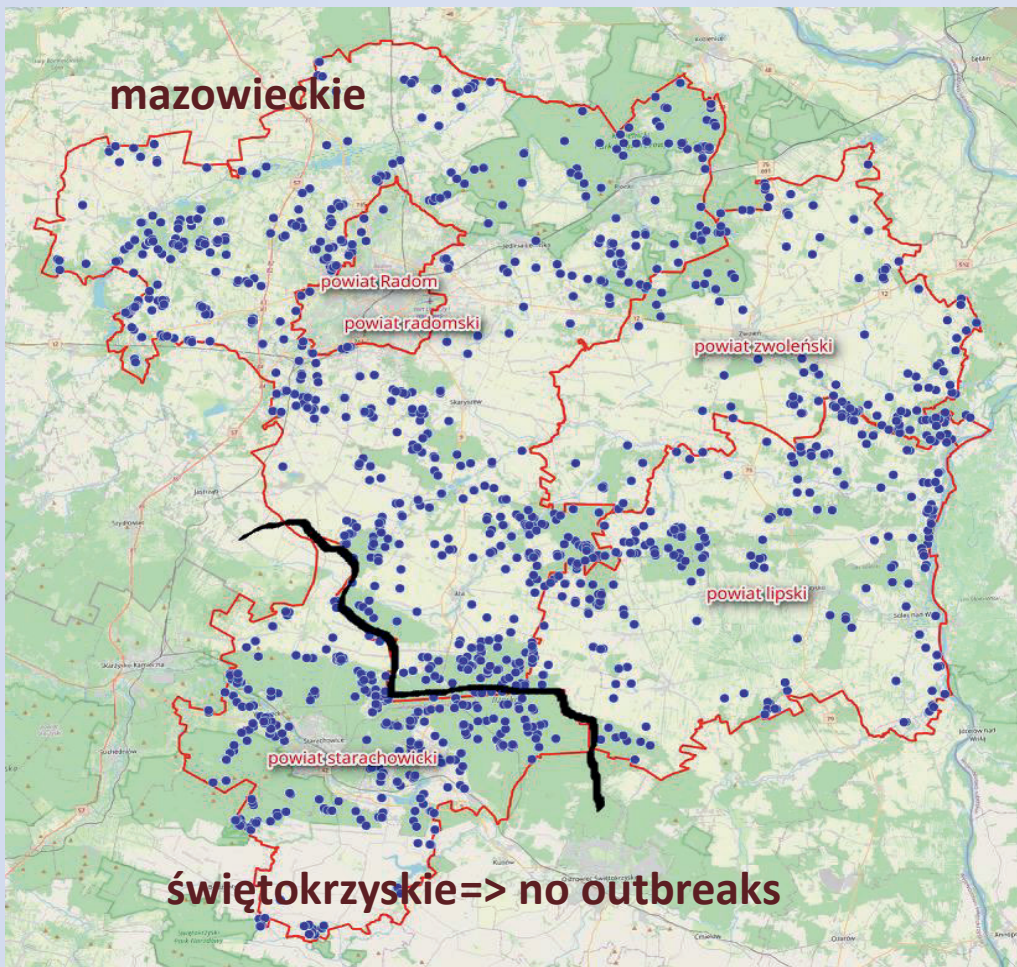


# 4. Mazowieckie i świętokrzyskie



reversion to RZ I in mazowieckie region  
reversion to RZ I and lifting RZ in świętokrzyskie

last outbreaks





Thank you