

Monitoring progress towards the SDGs

Gaëlle Espinosa

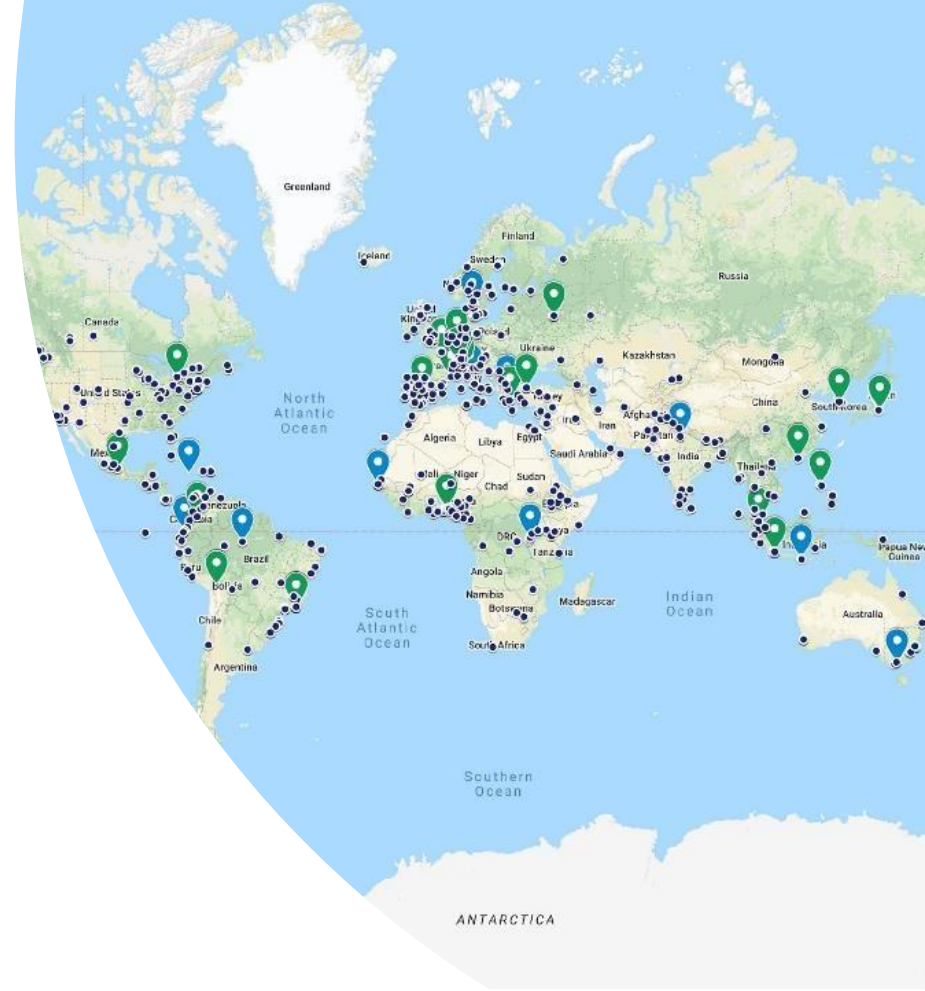
Senior Analyst, Food/Land Team
Sustainable Development Solutions Network (SDSN)

T4 – Monitoring Working Group for the European Commission Code of Conduct
on Responsible Business Practices, 31 March 2021.

Sustainable Development Solutions Network

Operates since 2012 under auspices of UN Secretary-General to support SDGs and Paris Agreement

1. Policy analysis and support
2. Global network of knowledge institutions
3. SDG Academy



**Gaëlle ESPINOSA, Senior Analyst
Food & Land Team (Paris, France)**

Experience

- Lead work on business metrics and business engagement on food and land-use systems for SDSN
- 10+ years international experience in environment / sustainability (incl. 7 years in private sector)
- Master of Public Administration from Columbia University, Economics B.A. from Paris IX Dauphine

Contact information:

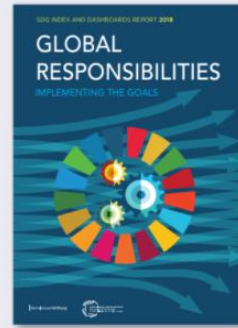
- gaelle.espinosa@unsdsn.org
- <https://www.linkedin.com/in/galleespinosa/>



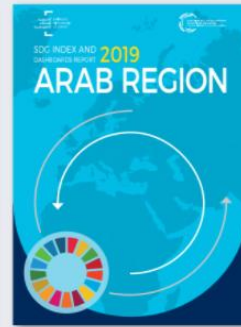
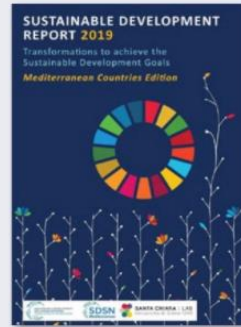
1. National and Sub National Monitoring

2. Private Sector Monitoring proposals

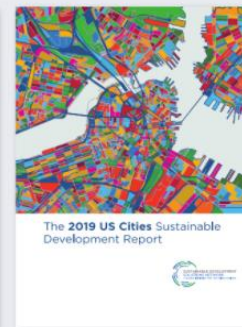
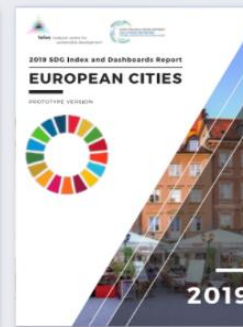
Global editions



Regional editions



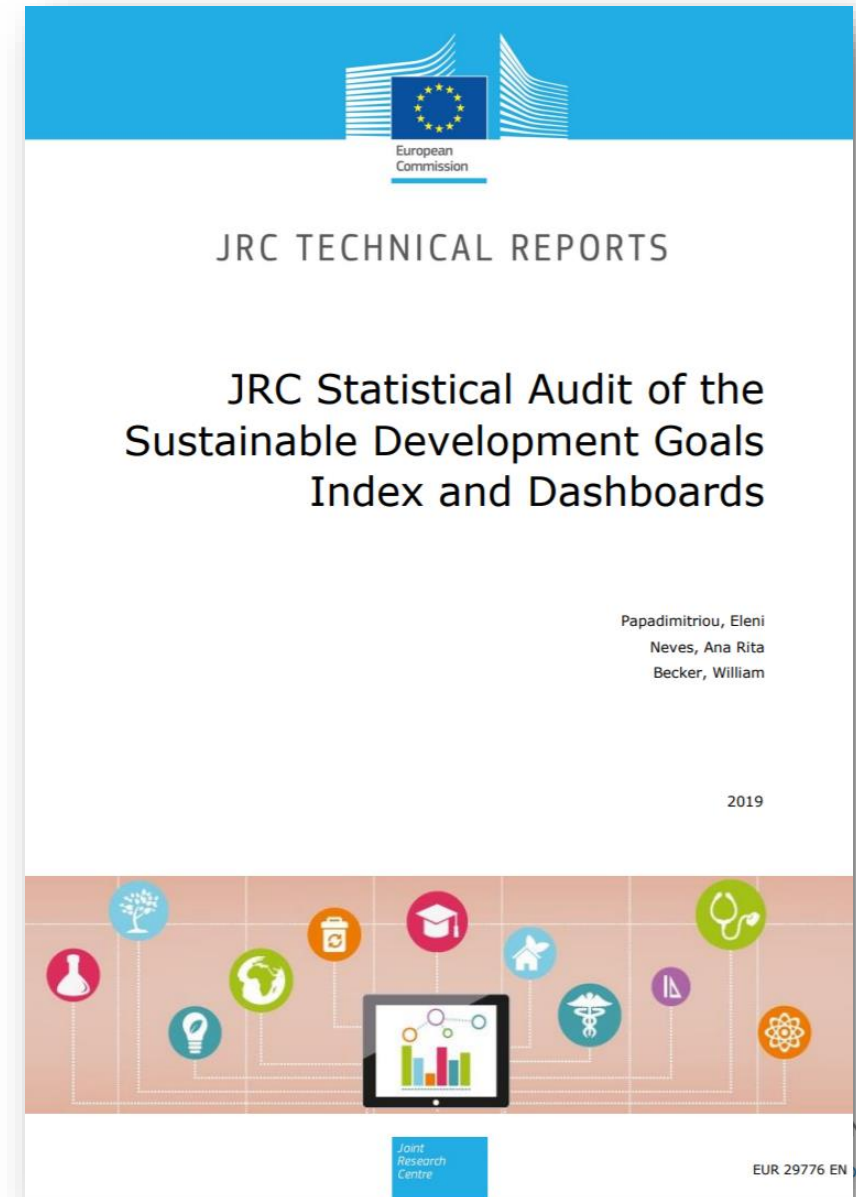
Subnational editions



Download the reports and databases at: www.sdgindex.org.

SDR2019 – Statistical audit by the European Commission (JRC)

*“The SDG Index is a **remarkable effort** of synthesizing the 17 SDGs into a single measure. The index ranks are **robust enough**, allowing meaningful conclusions to be drawn from the index.”*



France

OECD

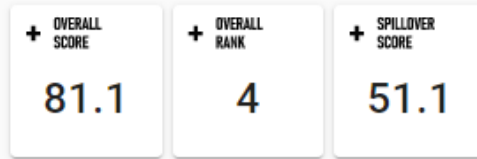


OVERVIEW

INDICATORS

Overall

Click on an assessment to view more information.



Current Assessment

Click on a goal to view more information.



Legend: ● SDG achieved ● Challenges remain ● Significant challenges remain ● Major challenges remain ● Information unavailable

Trends

Click on a trend to view more information.



Legend: ↑ On track or maintaining SDG achievement ↗ Moderately improving → Stagnating ↓ Decreasing ** Trend information unavailable

Description

The overall score measures a country's total progress towards achieving all 17 SDGs. The score can be interpreted as the percentage of SDG achievement. A score of 100 indicates that all SDGs have been achieved.

Description

Each country's actions can have positive or negative effects on other countries' abilities to achieve the SDGs. The Spillover Index assesses such spillovers along four dimensions: environmental, economy & finance, social and security. A higher score means that a country causes more positive and fewer negative spillover effects.

<https://dashboards.sdgindex.org/>



SDG 8: Decent work and economic growth

- .. Adjusted GDP growth
- .. Victims of modern slavery
- ↑ Adults with an account at a bank or other financial institution or with a mobile-money-service provider
- ↑ Fatal work-related accidents embodied in imports
- ↑ Employment-to-population ratio
- ↗ Youth not in employment, education or training (NEET)

SDG 9: Industry, innovation and infrastructure

- ↑ Population using the internet
- ↑ Mobile broadband subscriptions
- ↑ Logistics Performance Index: Quality of trade and transport-related infrastructure
- .. The Times Higher Education Universities Ranking: Average score of top 3 universities
- ↑ Scientific and technical journal articles
- ↑ Expenditure on research and development
- ↑ Researchers
- ↑ Triadic patent families filed
- ↑ Gap in internet access by income
- .. Women in science and engineering

SDG 10: Reduced inequalities

- ↗ Gini coefficient adjusted for top income
- → Palma ratio
- ↑ Elderly poverty rate

SDG 11: Sustainable cities and communities

- ↑ Annual mean concentration of particulate matter of less than 2.5 microns in diameter (PM2.5)
- ↑ Access to improved water source, piped
- ↓ Satisfaction with public transport
- ↑ Population with rent overburden

SDG 12: Responsible consumption and production

- .. Electronic waste
- .. Production-based SO₂ emissions
- .. SO₂ emissions embodied in imports
- .. Production-based nitrogen emissions
- .. Nitrogen emissions embodied in imports
- .. Non-recycled municipal solid waste

SDG 13: Climate action

- → Energy-related CO₂ emissions
- → CO₂ emissions embodied in imports
- .. CO₂ emissions embodied in fossil fuel exports
- .. Effective carbon rate

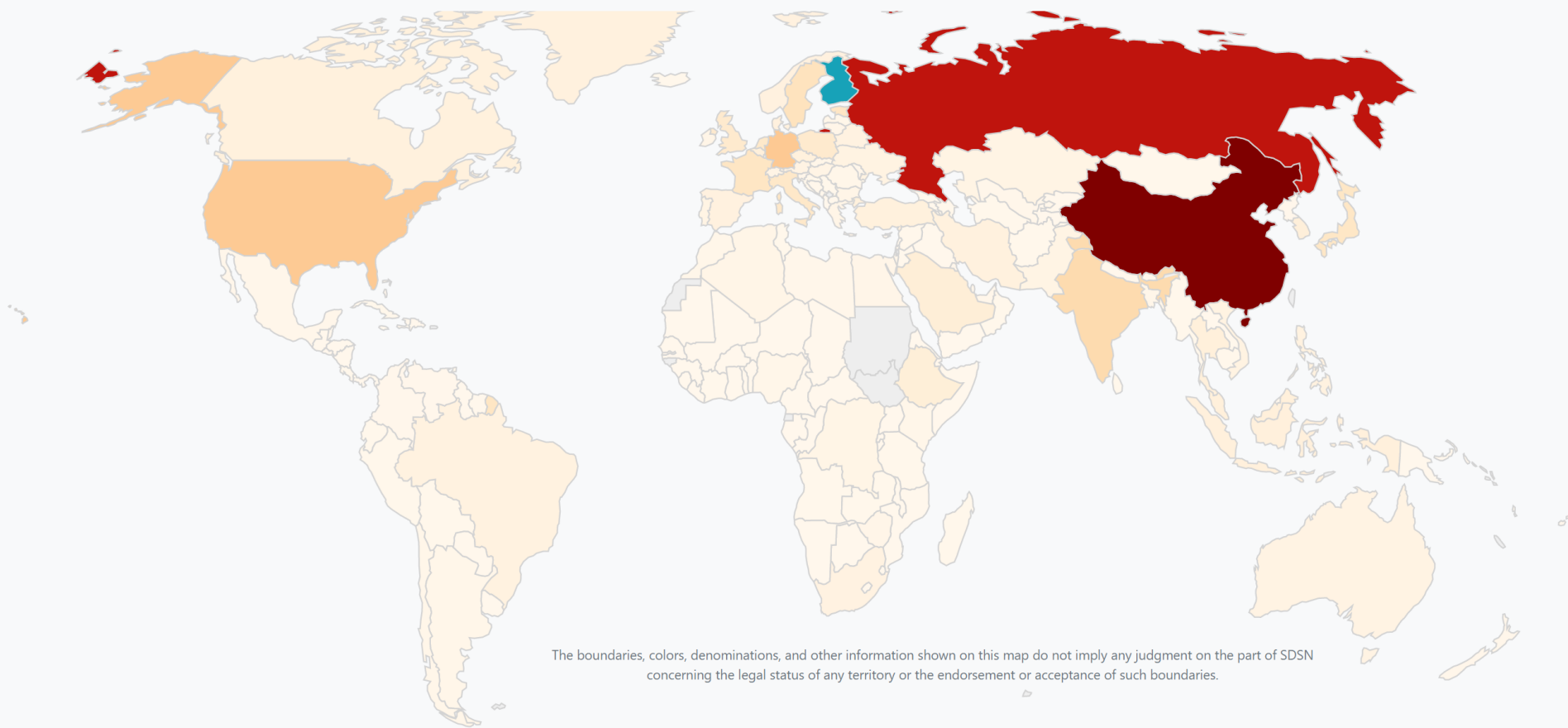
Trade-spillovers

<https://spillovers.environmentalimpact.global/#/>

1. Select a Country

2. Choose an Indicator

Now showing:
How **Finland** is impacting Greenhouse gas emissions in other countries through trade.



The boundaries, colors, denominations, and other information shown on this map do not imply any judgment on the part of SDSN concerning the legal status of any territory or the endorsement or acceptance of such boundaries.

Order by

Show using scale

SDSN & Yale University:
[Global Commons Stewardship Index \(Pilot Version\)](#)

[Data Viz](#)

1. National and Sub National Monitoring

2. Private Sector Monitoring proposals

The Food and Agriculture business value chain

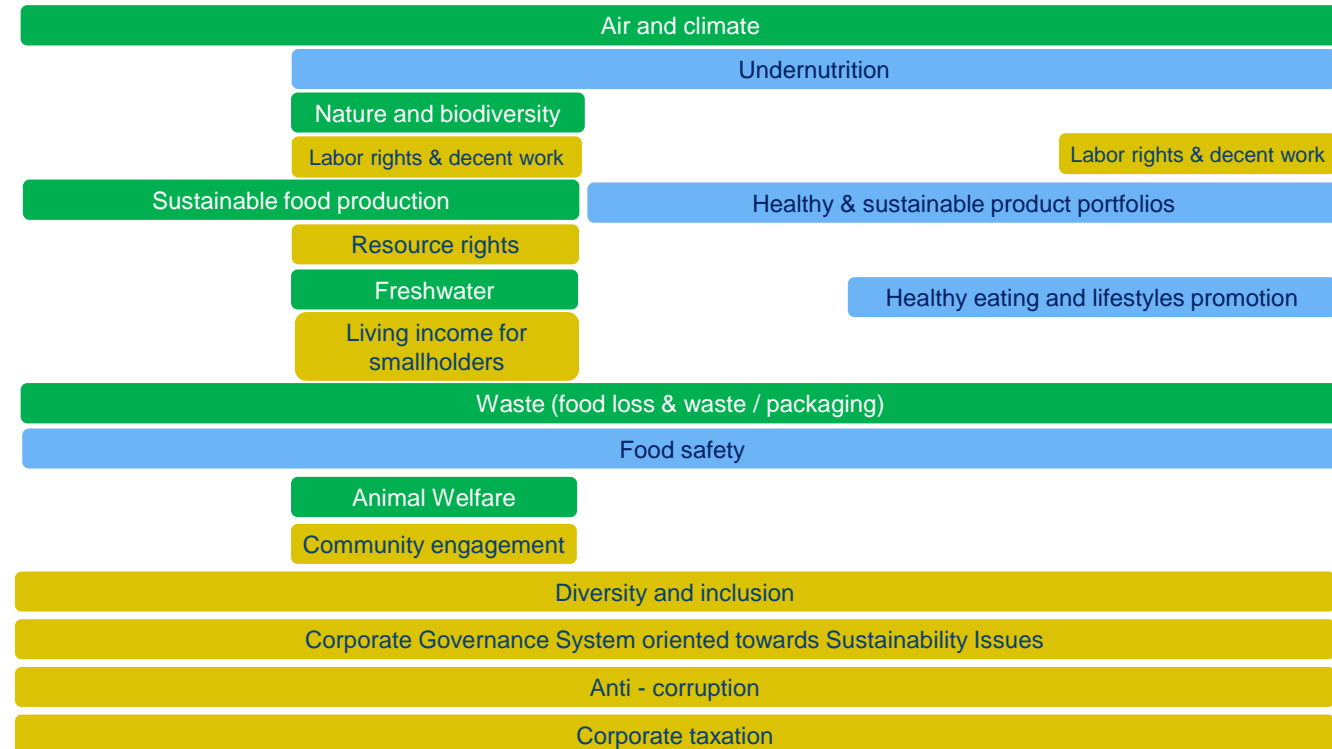


Key topics for food sector to improve on

Environment

Nutrition

Social & governance



Four pillars for corporate SDG alignment

Pillar 1

Beneficial products and strategies contributing to healthy and sustainable dietary patterns



Pillar 2

Sustainable internal processes

Pillar 3

Sustainable value chains



Pillar 4

Good Corporate Citizenship

Deficiencies in SDG alignment across sustainability standards

Mostly descriptive information and insufficient to track progress towards quantitative, time-bound SDGs

Standards, frameworks and certifications analyzed	ATNI	B Corp	CDP	Dow Jones SI	FSC	GRI	OECD-FAO	RSPO	SASB	UN Global Compact	WBA	WBCSD	Total
Qualitative indicators	64%	43%	72%	33%	100%	34%	100%	93%	17%	82%	47%	100%	65%

Most indicators focus on production processes (pillar 2)

<https://www.fixing-food.com/wp-content/uploads/2020/10/Fixing-the-Business-of-Food-2020-Report.pdf>

Categories	1. Products	2. Processes	3. Supply / Value Chain	4. Corporate Citizenship	Total
Environmental	2%	29%	4%	2%	37%
Social	3%	26%	12%	0%	42%
Governance	2%	9%	0%	10%	21%
Total	7%	64%	16%	12%	100%

Example: business indicators & targets for GHG emissions

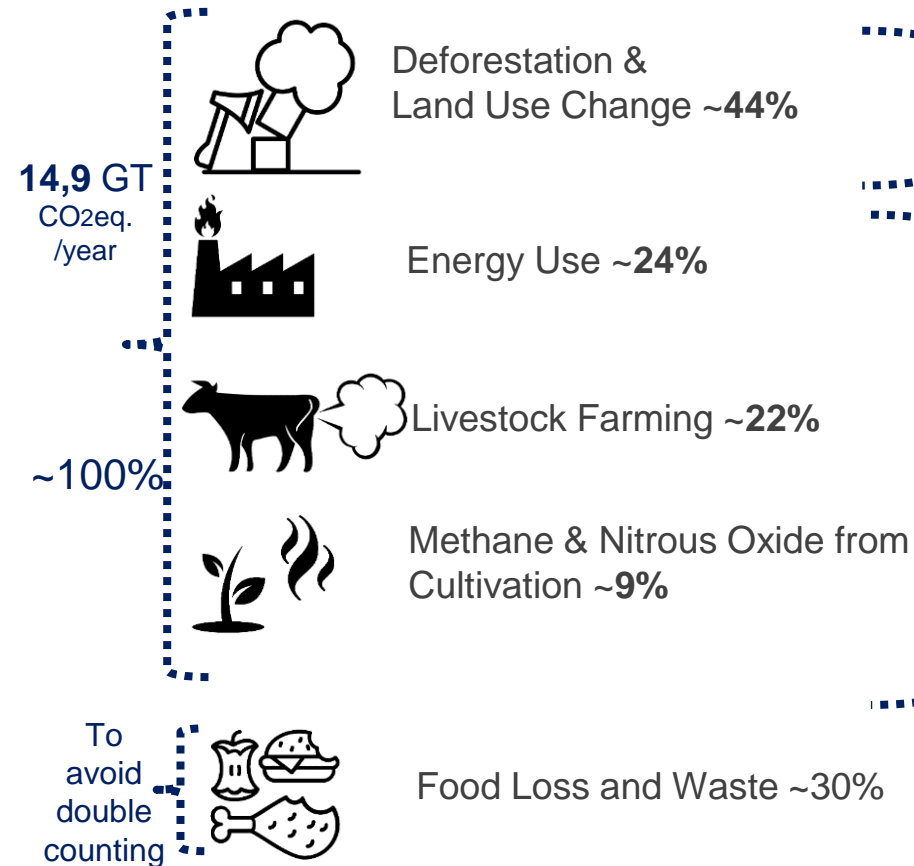
(Air and climate topic)

Major GHG drivers from Food & Ag

Global targets

Company indicators

Company targets

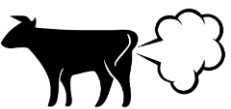


0 GT CO₂eq./year

4 GT CO₂eq./year

- Percentage of agricultural inputs from certified Zero Deforestation sources 100%
- Percentage of all company power consumption emitting zero GHG emissions 100%
- [Percentage of products sold containing animal-based protein inputs] Sharply decreasing
- Percentage of feed with methane reduction properties 100%
- Percentage of manure managed to prevent GHG emissions 100%
- Percentage of agricultural inputs sourced from production using methane reducing techniques 100%
- Percentage of Food Lost and/or Wasted -50%

Proposed proxy / action indicators to track progress on GHG Emissions only



Percentage of feed with methane reduction properties

Percentage of manure managed to prevent GHG emissions

Percentage of agricultural inputs sourced from production using methane reducing techniques

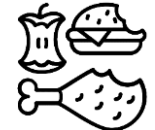
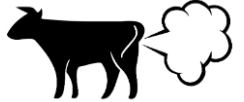
Percentage of all company power consumption emitting zero GHG emissions

Percentage of Food Lost and/or Wasted



Percentage of products sold containing animal-based protein inputs

Percentage of agricultural inputs from certified Zero Deforestation sources



Questions / Suggestions

Contact information

Gaëlle Espinosa - gaelle.espinosa@unsdsn.org