



Highly pathogenic avian influenza in Germany

Current Situation

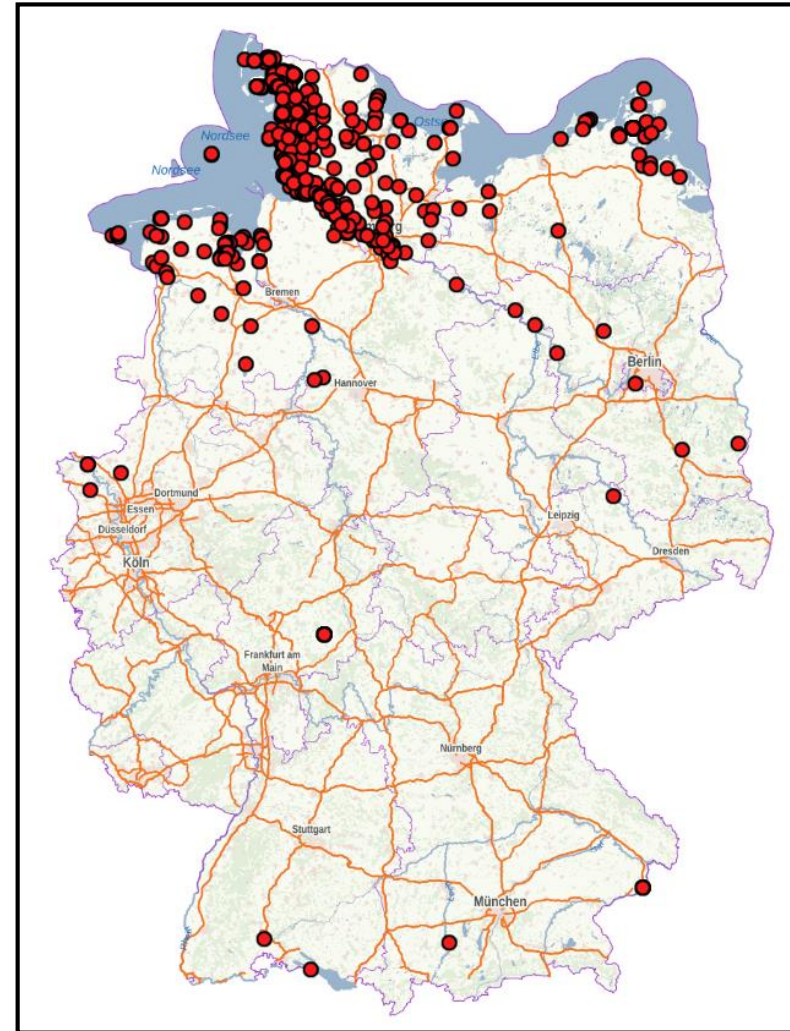
SCoPAFF-meeting on 15.01.2021

Content

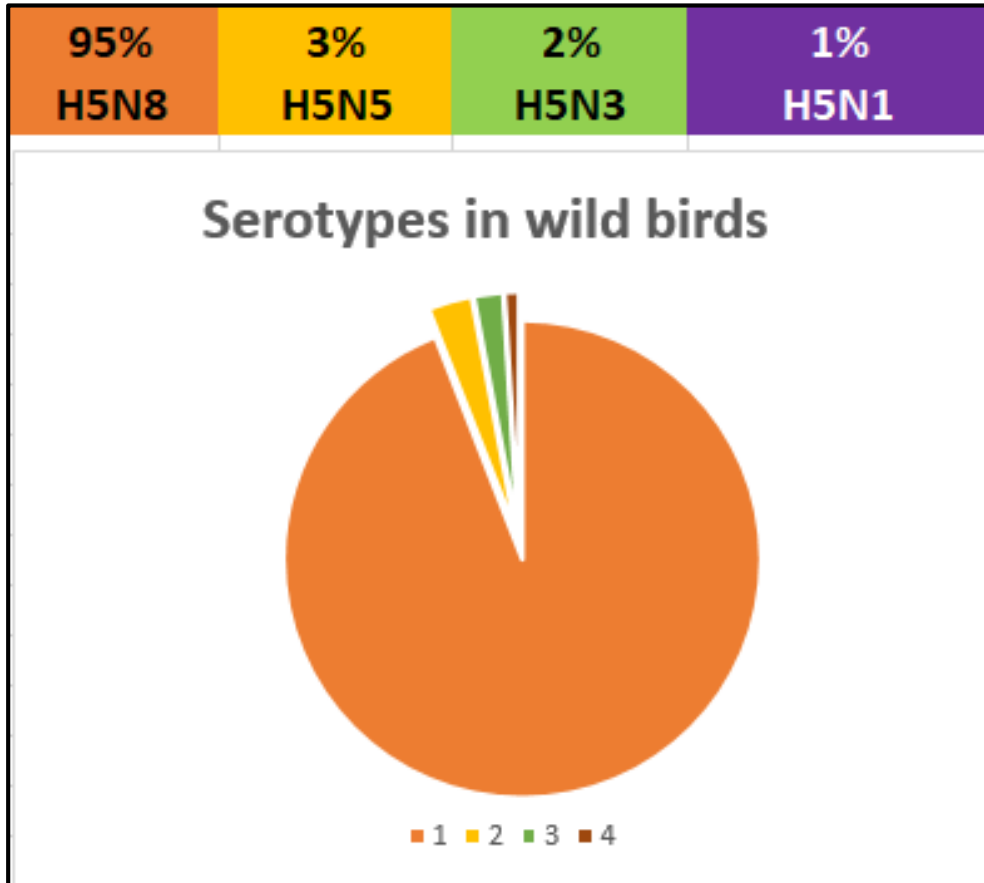
1. Situation in wild birds October 2020 – January 2021
2. Current situation in captive birds/poultry
3. Special HPAI event in Lower Saxony
4. Summary

Situation in **wild** birds

- **HPAI in wild birds**
since 01.10.2020 up to 13.01.2021:
=> **498 cases**
- The northern territory of Germany more than **16.000** wild birds have been found dead.
- In meantime **12 Länder affected**
Bavaria, Baden-Württemberg, Berlin, Brandenburg, Bremen, Hamburg, Hessen, Lower Saxony, Mecklenburg-Western Pomerania, North Rhine-Westphalia, Saxony and Schleswig-Holstein.



Situation in **wild** birds - Serotypes

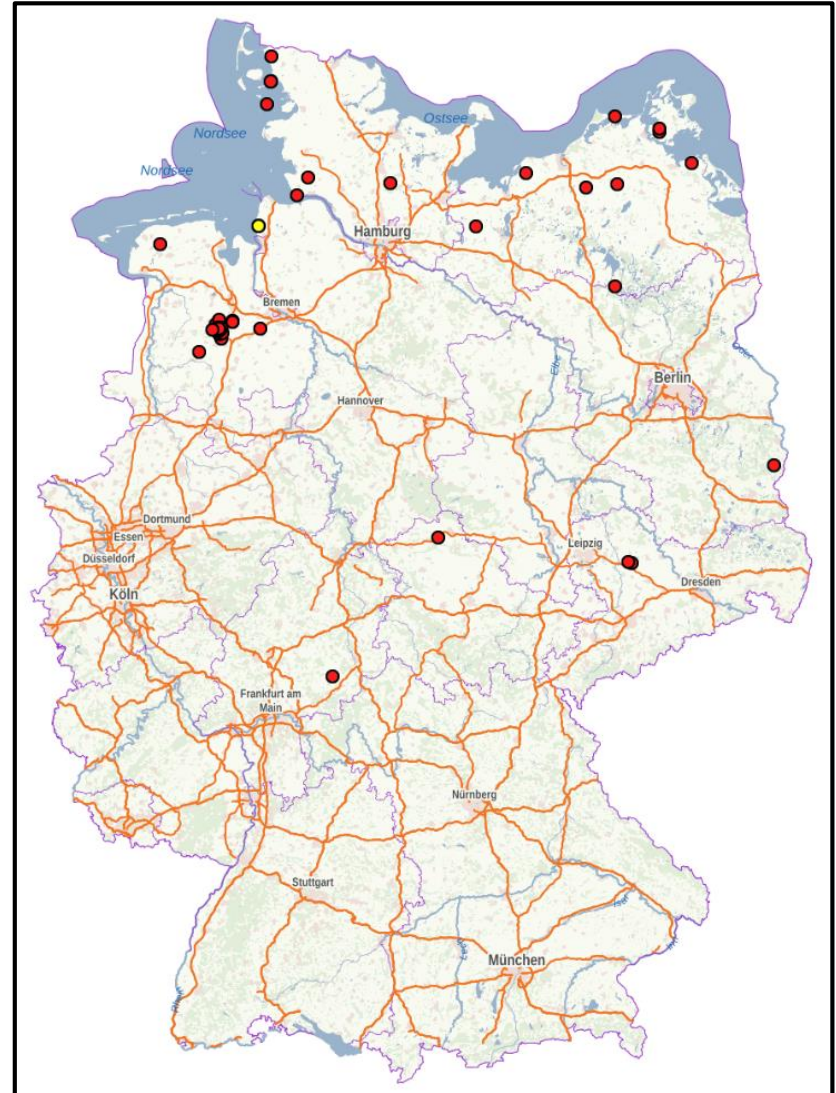


H5N3 in red knots
„*Calidris canutus*“



Epidemiological situation in captive birds/poultry

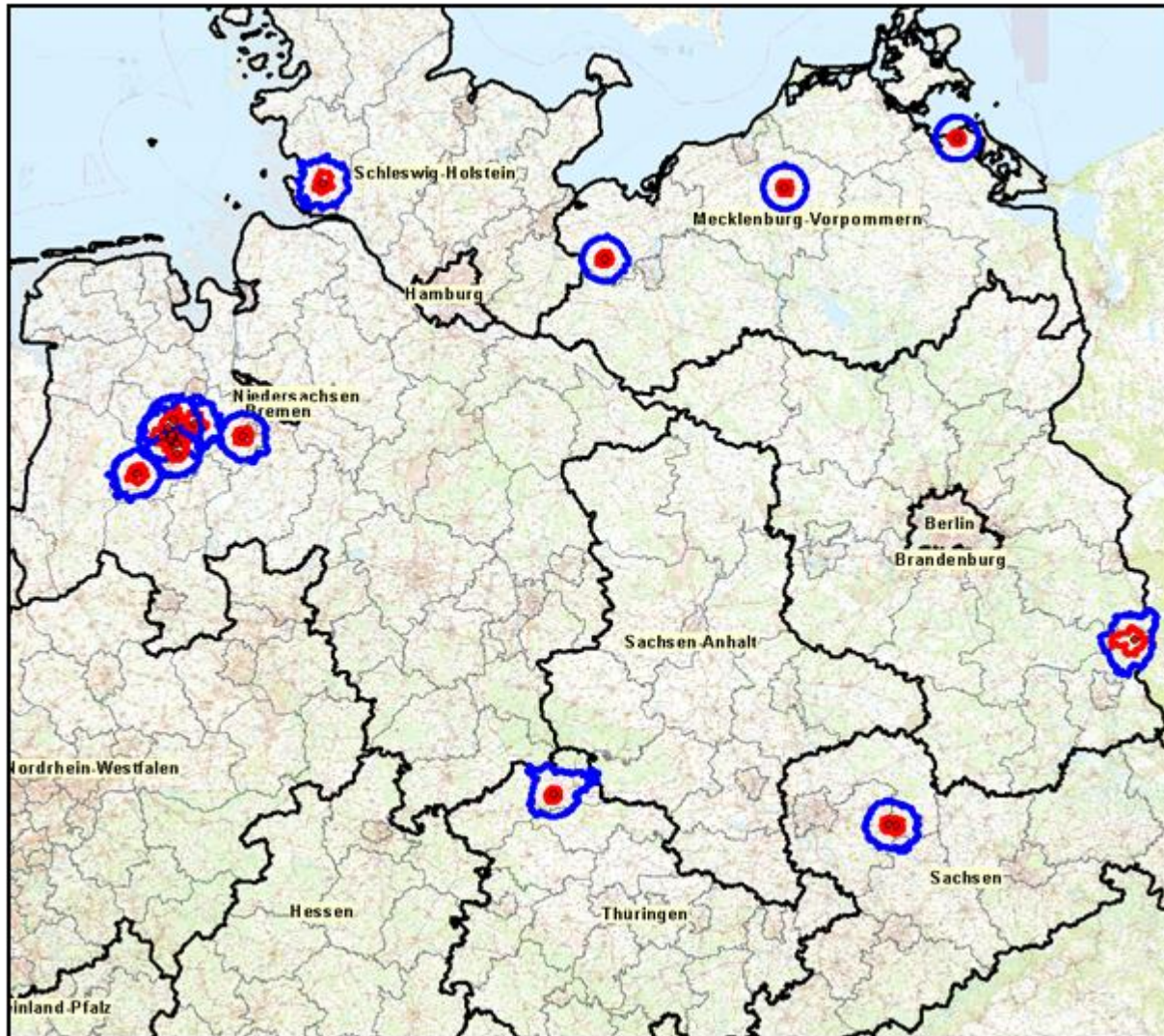
- **HPAI outbreaks in poultry holdings**
 - **Confirmed: 39.**
 - **Closed: 12.**
 - **Still active: 26.**
 - **Suspicion: 1.** (14/01/2021 - 12:00)
- **Six Länder affected:**
Brandenburg, Lower Saxony, Mecklenburg-Western Pomerania, Saxony, Schleswig-Holstein and Thuringia.
- HPAI serotypes detected:
 - **H5N8 in 38 cases**
 - **H5N5 in one singular case**
- Total number of poultry in the infected holdings ca. **375.000.** (preliminary data).



Still active protection and surveillance zones

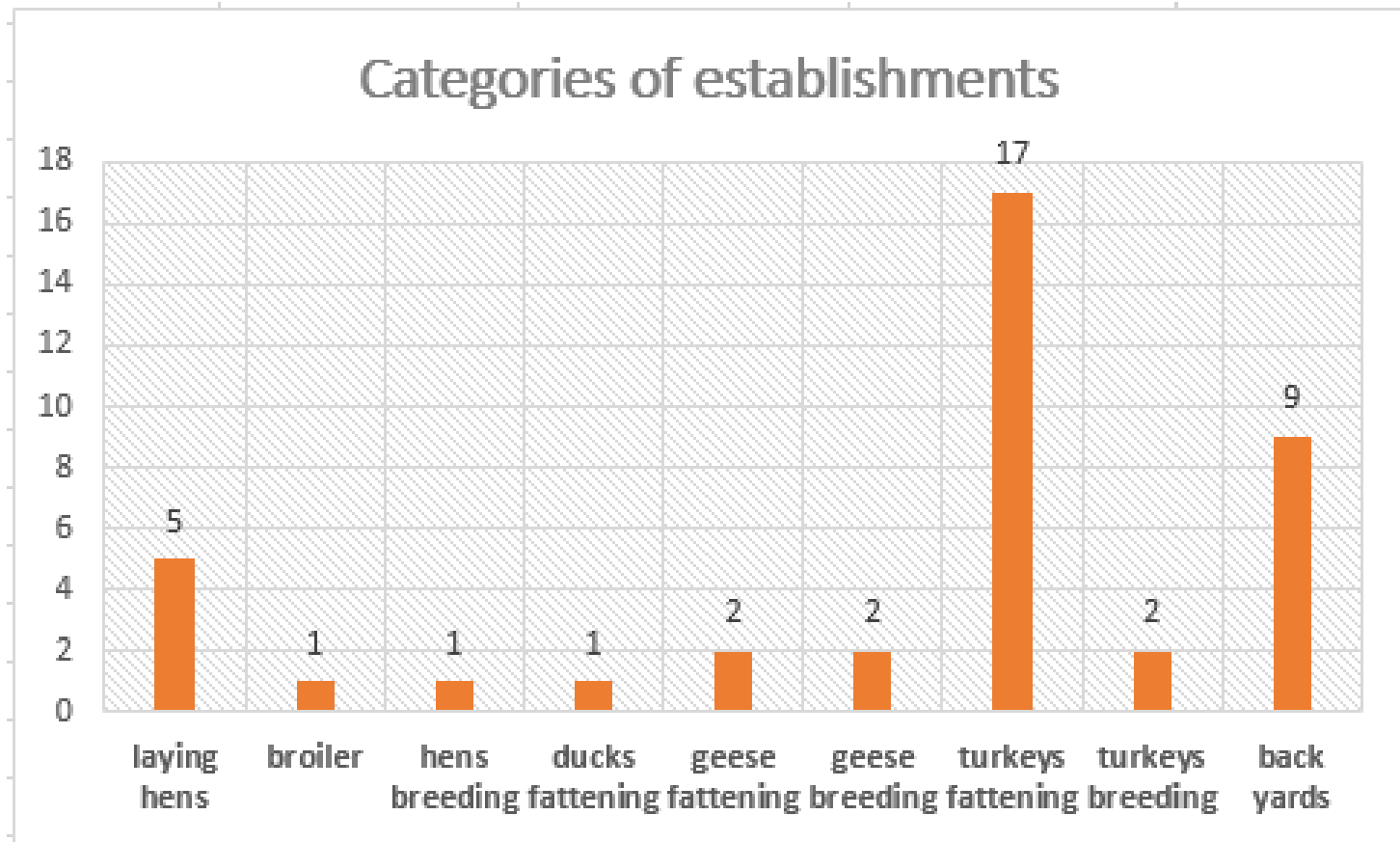


Outbreak closed next to the Danish. Restricted zones lifted.



Poland Surveillance zone due to an outbreak in Brandenburg

Epidemiological situation in captive birds/poultry



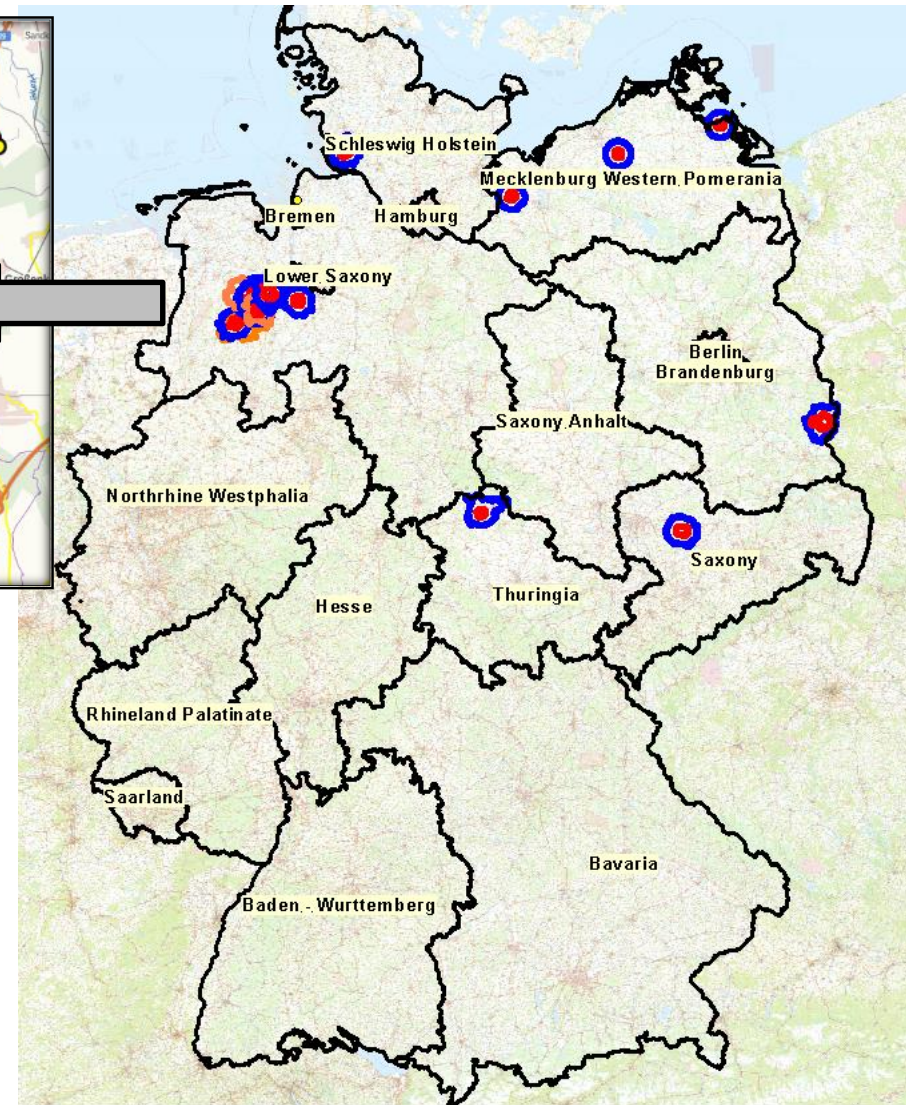
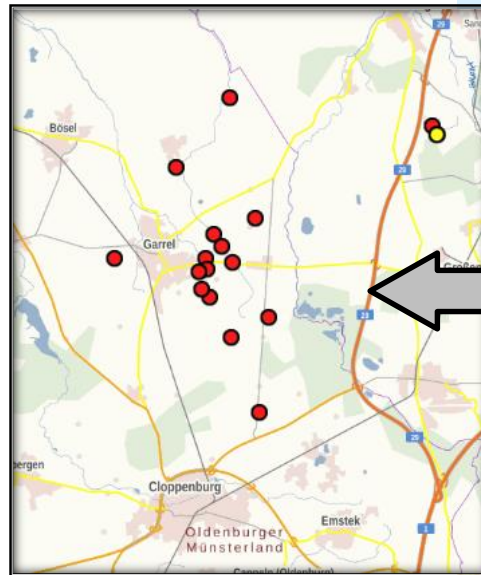
HPAI event in Lower Saxony

20 HPAI cases:
17 turkey fattening
1 duck fattening
1 turkey breeding
1 hens breeding

From 21.12.2020 –
until 13.01.2021.

Age of the turkeys:
9 -18 weeks.

All serotype **H5N8**
Gene sequencing ongoing:
Genome very similar
Just very few differences.

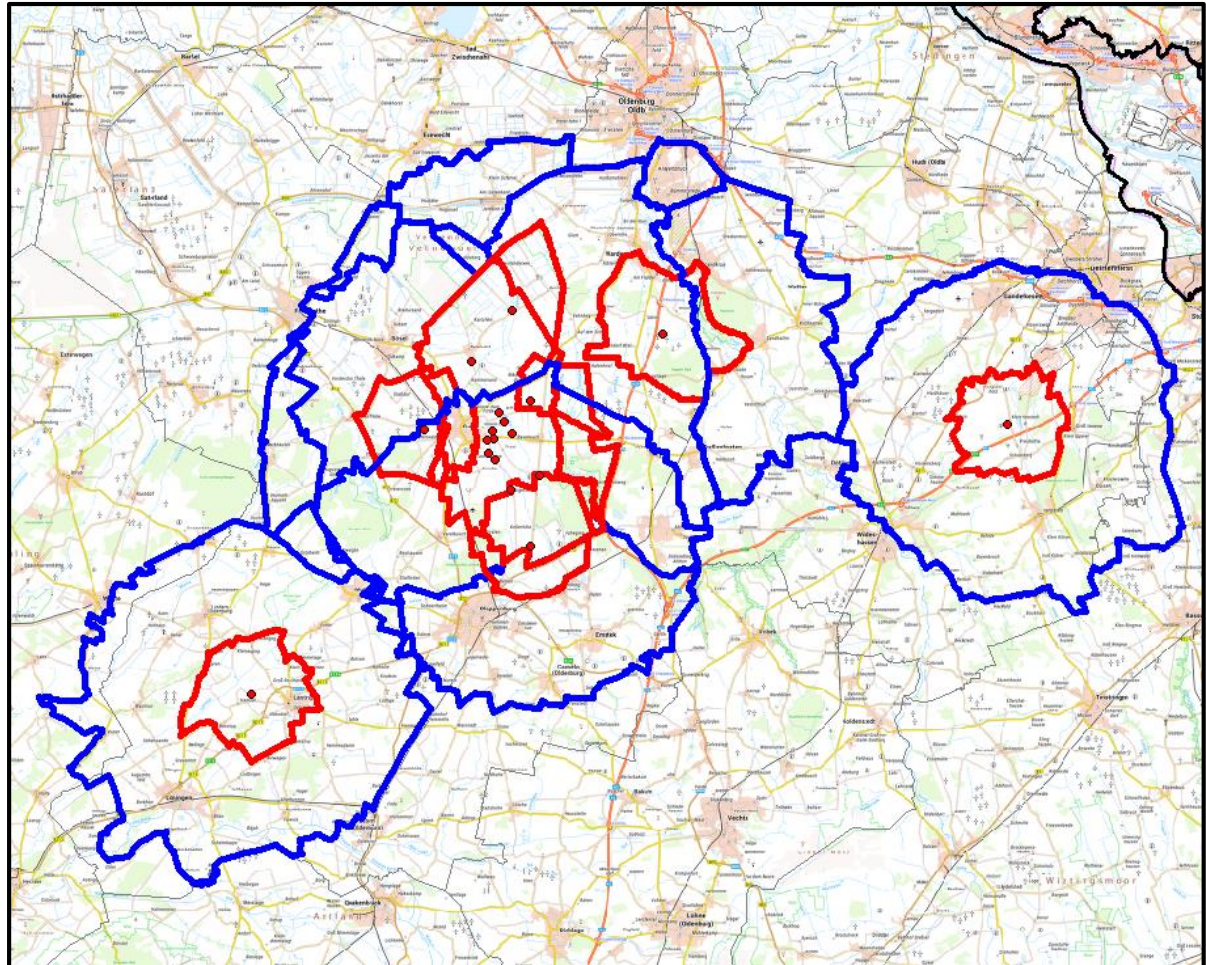


Lower Saxony - restricted zones

Red: Protection Zone
Blue: Surveillance Zone

In all restricted zones in Lower Saxony:

- 2.205 establishments
- 14. Million poultry (2 Mil in PZ)
- 11. Mil chicken (1 Mil in PZ)
- 2.5 Mil turkeys (1 Mil in PZ)



Lower Saxony – Epidemiological investigations

Poultry population

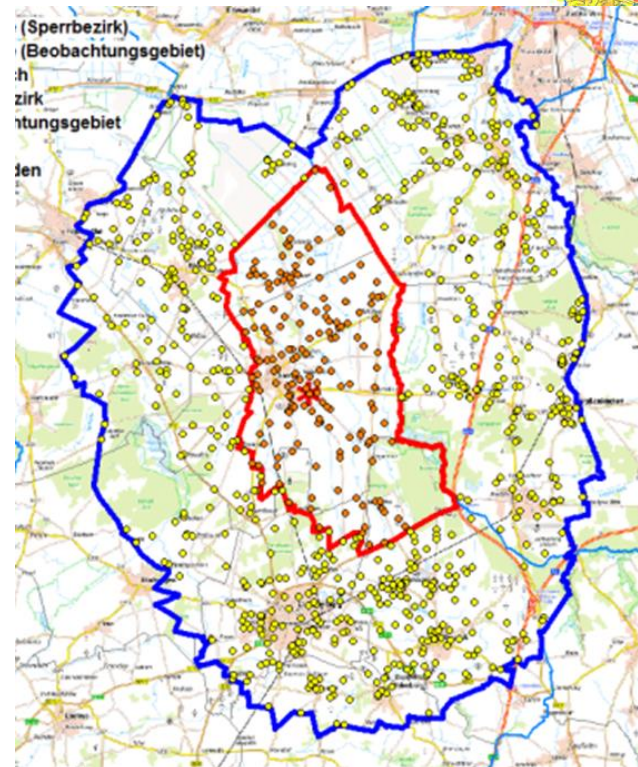
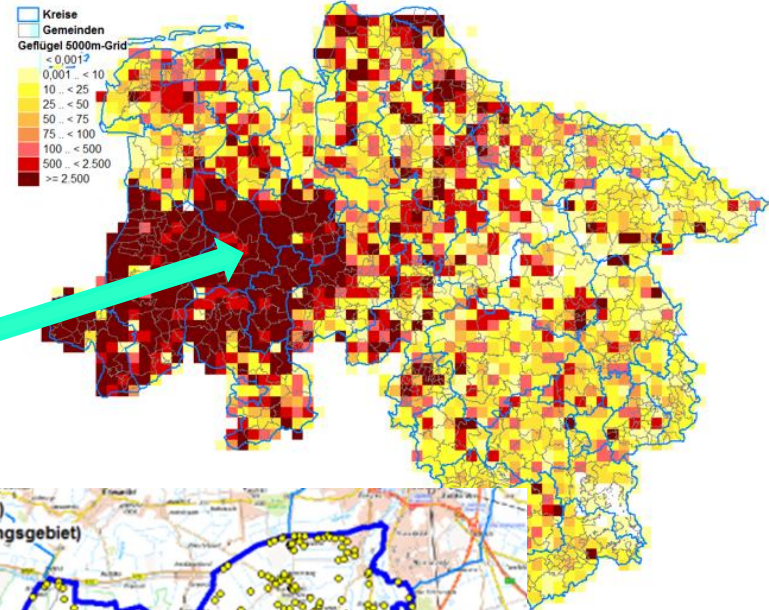
Very high density of poultry in that land and in particularly in the affected districts

Cloppenburg and Oldenburg

- 14.000 poultry / km²;
- 6.500 turkey / km²

In the five municipalities affected:

- 890 poultry establishments
- 182 of them turkey holdings
- 168 of them with flocks of more than 900 turkeys



Lower-Saxony - Epidemiological investigations

Facts:

- Similar event in 2016 / 2017
- The biosecurity level and the response of the farmers and of the veterinary administration was at time also on high level.
- The lessons learned in that event were used for improvements by the veterinary administration, veterinarians, poultry industry, farmers associations, farmers, feed industry, transporters, traders, slaughterhouses etc.
- The biosecurity and the management of the establishments have been improved and checked periodically, in 2020 as well, by official veterinarians.

Lower Saxony :

Epidemiological investigations

Experts from different administrative levels have been and are still involved:

- District level:
Specialist veterinary officers of the districts Cloppenburg and Oldenburg
- Land level:
Epidemiology experts of the “competence centre” of LAVES
Lower Saxony State Office for Consumer Protection and Food safety

Lower-Saxony

Epidemiological investigations

In the framework of the epidemiological investigation among others the following points have been checked and assessed:

- Contact between animals, animal movement, trade, transport,
- Human contacts, staff, veterinarians, 'catching teams', etc.
- Vehicles, agricultural machines and equipment,
- Feed, feed procurement, storage, feeding management,
- Bedding, source, storage, use, disposal, bedding management,
- Ventilation system,
- Fallen stock, removal, storage of carcasses, collection, disposal,
- etc.

Lower-Saxony

Results - Epidemiological investigations

- No evidence for dissemination of the virus between the establishments through direct or indirect contacts.
- Most likely way of introduction of the agent through infected wild birds.
- By now each individual establishments is a primary outbreak case.
- Very likely a high accumulation of HPAI virus in that region.

Next step: National level

- The comprehensive epidemiological data collected have been sent to Friedrich-Loeffler-Institute – Federal Research Institute for Animal Health (National Reference Laboratory for AI as well).
- The data will be in deeply assessed by the national experts.
- Visits on spot will be carried out taking in consideration the ‘Corona-Situation’ as well.

Lower Saxony – control measures

- The necessary control measures in accordance to the EU and German national legislation have been strictly and promptly enforced.
- Restrictions of movement, stamping out, disposal, cleaning and disinfection, establishment of restricted zones etc.
- In the poultry establishments in the protection zones each second day samples are taken and tested for AI.
- Intensification of the surveillance in wild birds and in poultry

Lower Saxony

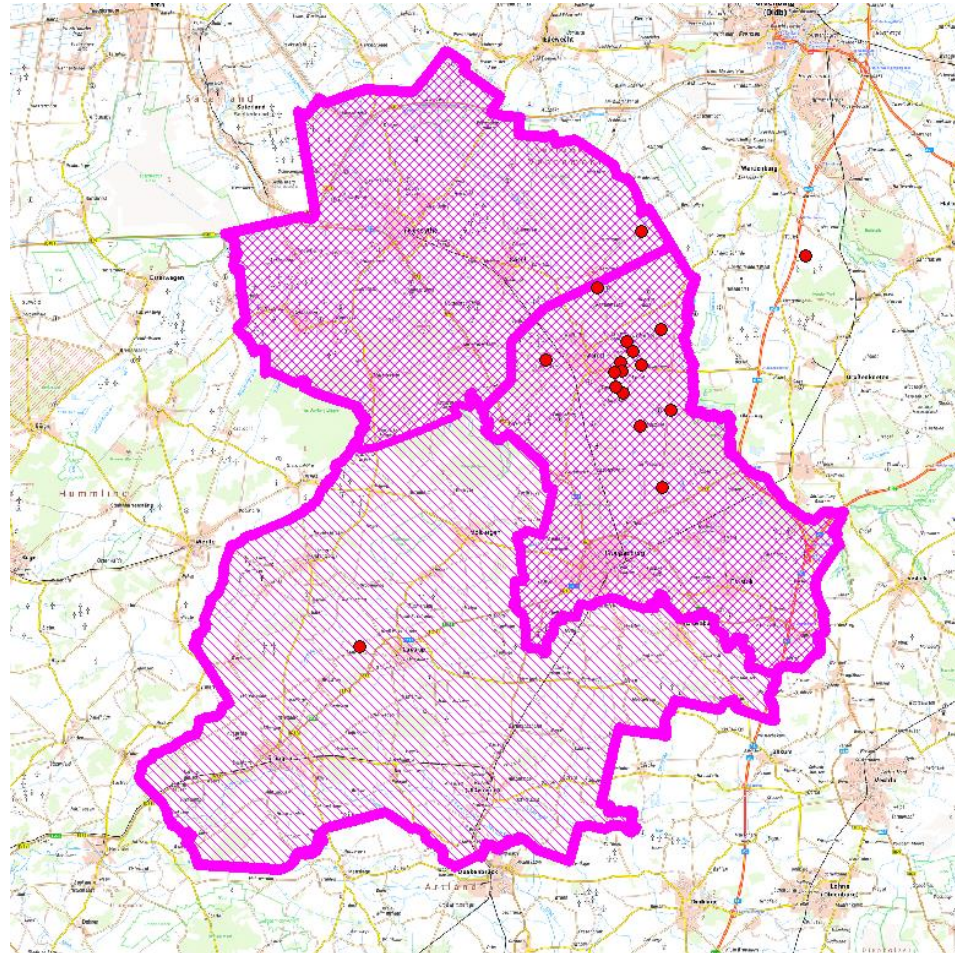
Additional measures in the surveillance zones

- Prohibition of repopulation of turkey and duck holdings.
(in the protection zones as well)
- Permission for slaughter or for movement (including the changing of stables) just if:
 - negative PCR-results from samples taken not earlier than 48h before slaughter
 - clinical examination carried out by the official veterinarian not earlier than 24h before slaughter with negative results;

Lower Saxony – control measures

Zones with prohibition of repopulation of establishments

Prohibition of repopulation of the turkey and duck establishments in order to reduce regionally the density of the poultry population.



Summary

- Epidemiological situation is still dynamic due to the high number of migratory wild birds infected
- Measures to mitigate the risk of transmission from wild birds to poultry have been taken
- Necessary measures in order to control and eradicate the disease in the infected holdings and in the restricted zones have been carried out
- However, sporadic cases are still confirmed in poultry as well;
- The epidemiological assessment of the special event in Lower Saxony is still ongoing.

Thank you for your attention!

