



African swine fever in Poland – update

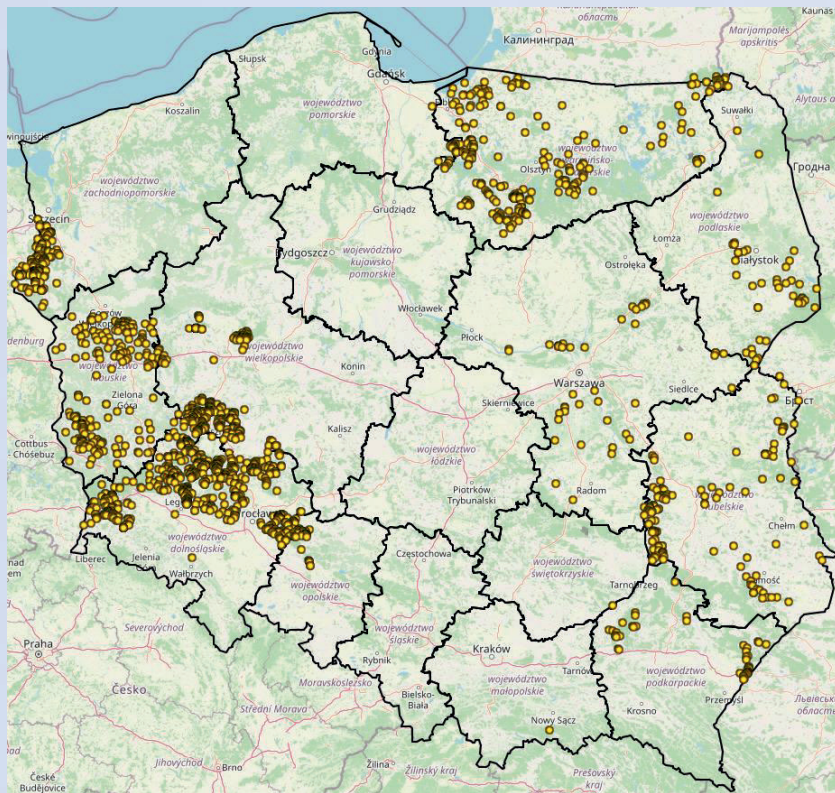


SCPAFF 15-16 December 2022

ASF outbreaks in WB 2022 14/12/2022



1880 outbreaks in WB



voivodeship	no. of outbreaks in WB	no. of WB positive
dolnośląskie	650	740
lubelskie	135	165
lubuskie	246	296
małopolskie	1	1
mazowieckie	45	46
opolskie	47	66
podkarpackie	53	93
podlaskie	44	47
pomorskie	10	10
warmińsko-mazurskie	254	350
wielkopolskie	229	313
zachodniopomorskie	166	194
summary	1880	2321



dead	1442
shot	851
killed in road accidents	26
ethanized	2

ASF outbreaks in pigs in 2022

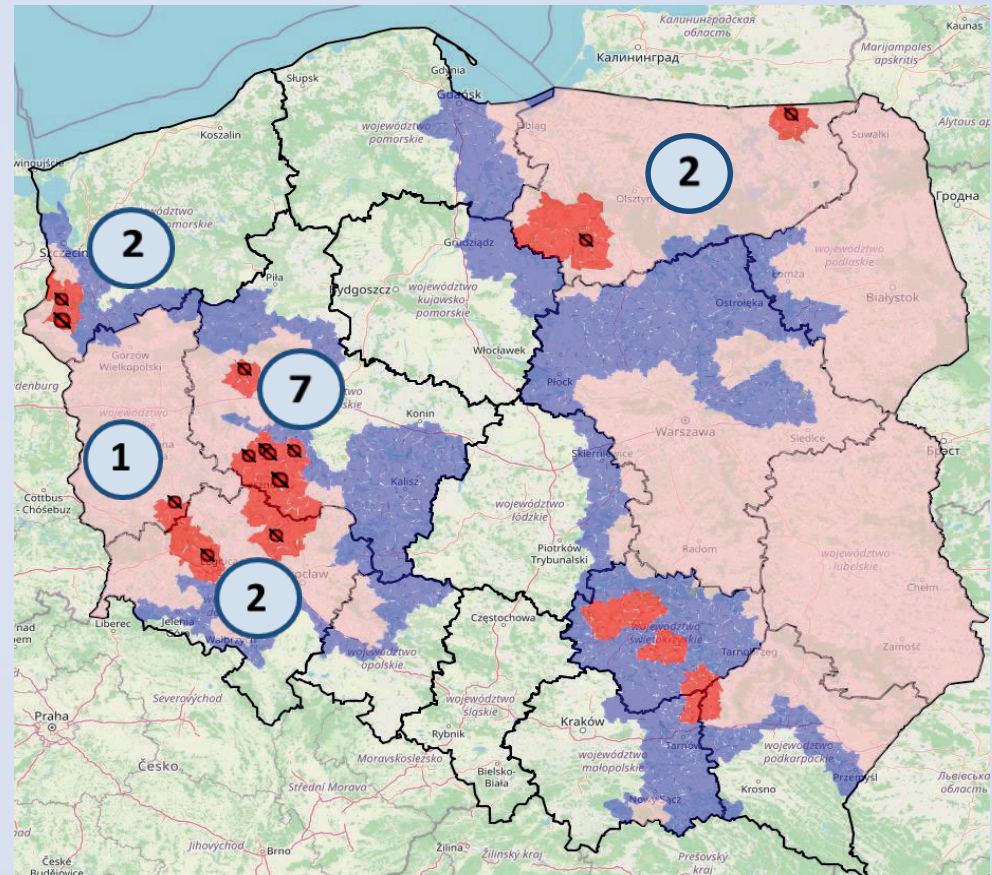


Last outbreak confirmed on
06.09.2022

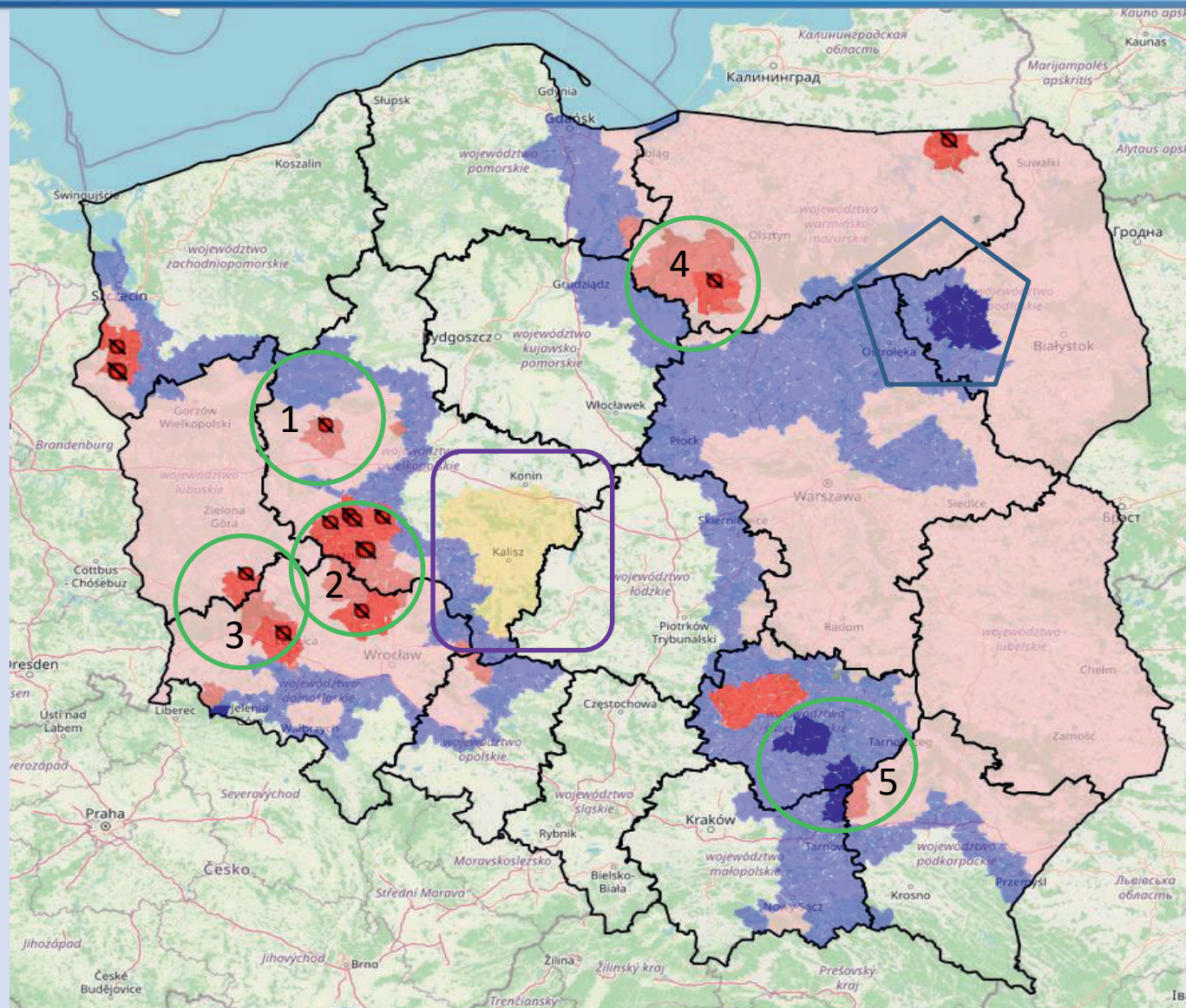
IN TOTAL:

14 outbreaks in 5 voivodeships:

- 7 outbreaks in RZ III
- 7 outbreaks in RZ II



Regionalisation



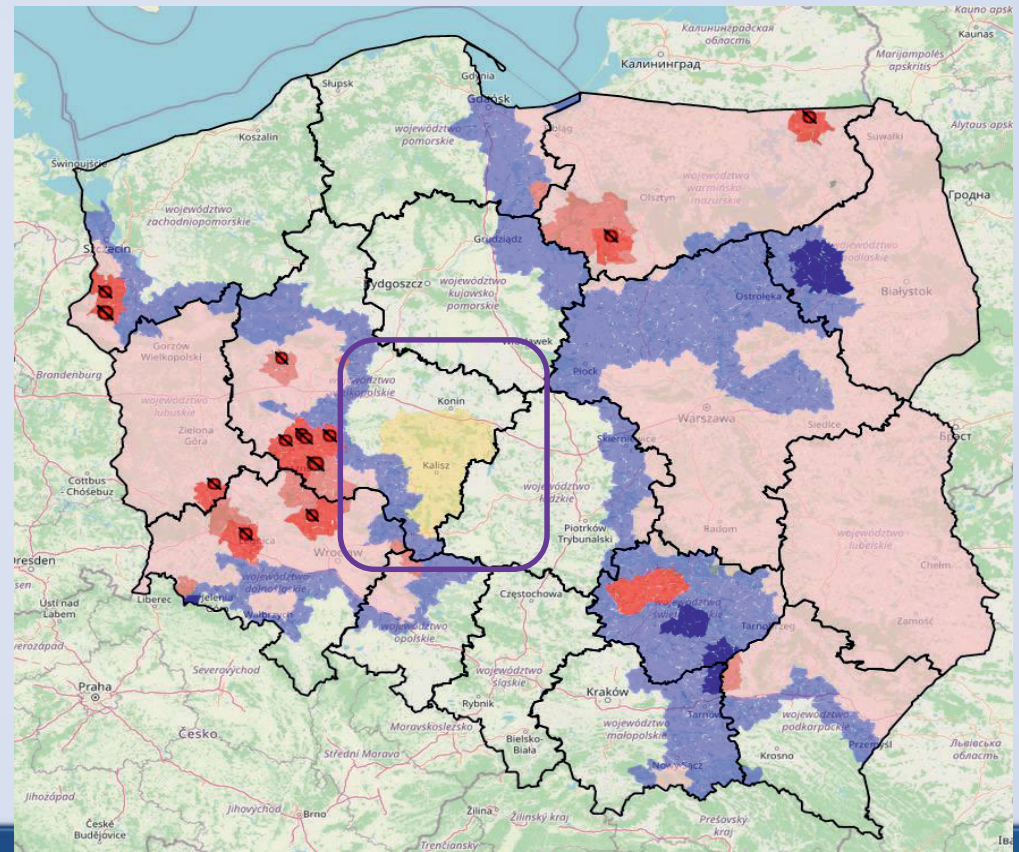
Lifitng the area of RZ I



RZ I - area established as a consequence of one and single outbreak in WB in kaliski district/ wielkopolskie region.

ASF outbreak No. 2021/1458 (PL-ASF-2021-00276) was confirmed on 24 May 2021.

RZ II was reverted to RZ I with the CIR 2022/917 of 13 June 2022



Reversion RZ II to RZ I



RZ II in 3 districts in Podlaskie region:

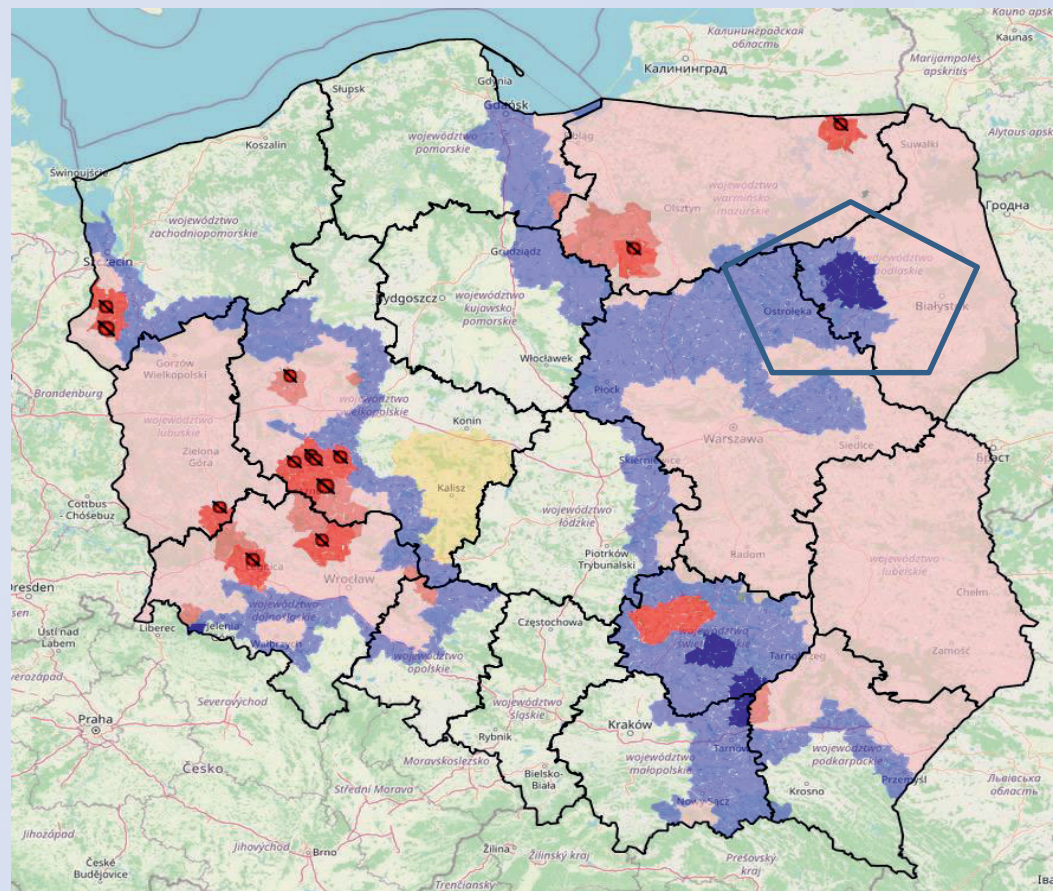
1. kolneński – no outbreaks in pigs and in WB,

2. łomżyński –

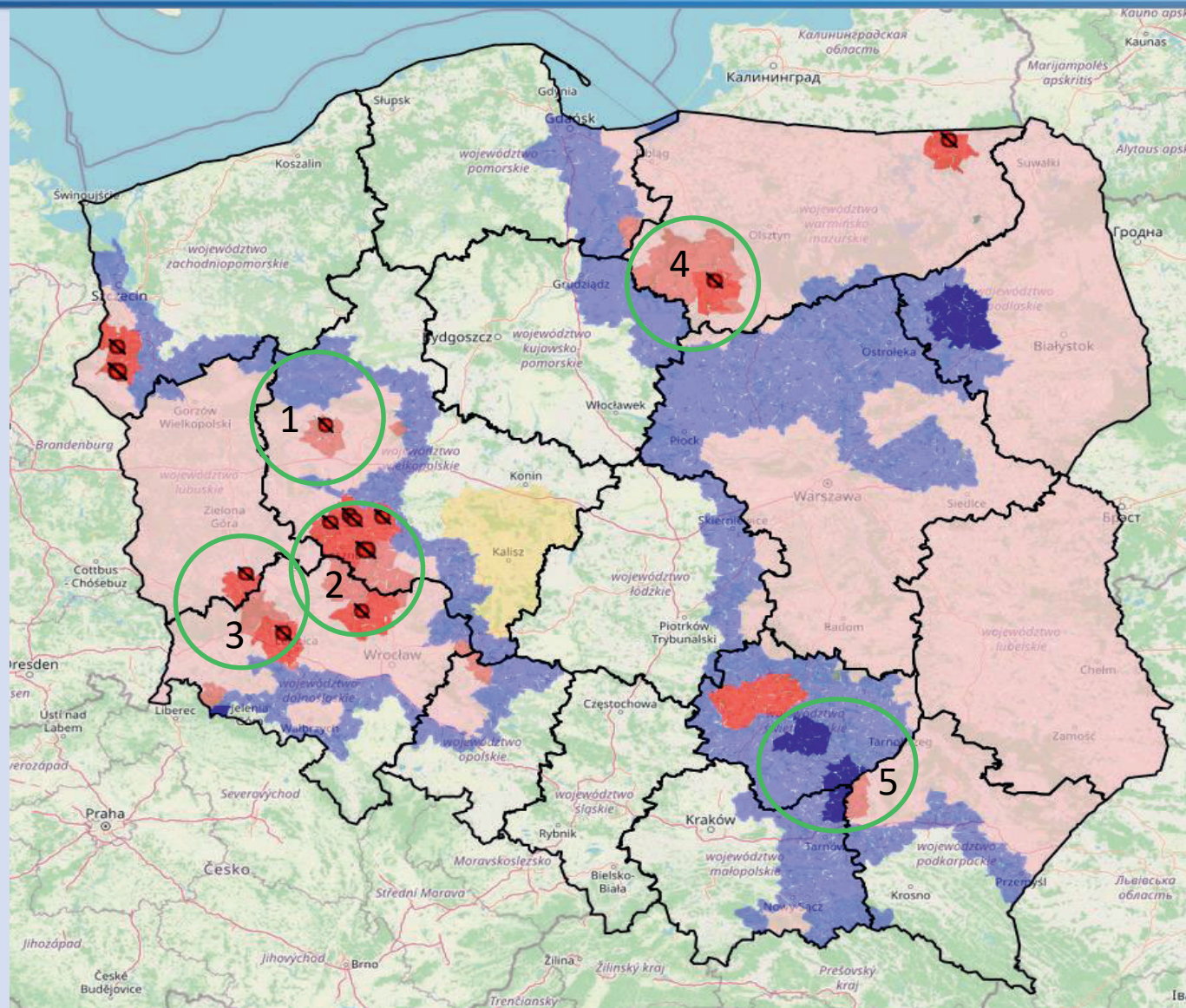
- last outbreak in wild boar - August 2020
- last outbreak in pigs - August 2017

3. zambrowski -

- last outbreak in wild boar - July 2020
- last outbreak in pigs - August 2016



Regionalisation



Reversion RZ III to RZ II



1. RZ III in wielkopolskie region – single outbreak in 2022 (27.07.2022), no previous outbreaks – reversion to RZ II
2. RZ III in dolnośląskie and wielkopolskie regions established due outbreaks in 2021 – 3 outbreaks, the last one confirmed on 30.09.2021 – decreasing the range of RZ III – reversion to RZ II
3. RZ III in dolnośląskie region established due to outbreaks in 2021 (last one on 30.07.2021) and maintained due to outbreaks in neighborhood in 2022 - decreasing the range of the zone in area where there were no outbreaks in 2022 - reversion to RZ II
4. RZ III in warmińsko mazurskie region - established due to number of outbreaks in 2021 - the last one confirmed on 17.12.2022- decreasing the range of RZ III

Reversion RZ III to RZ II and I



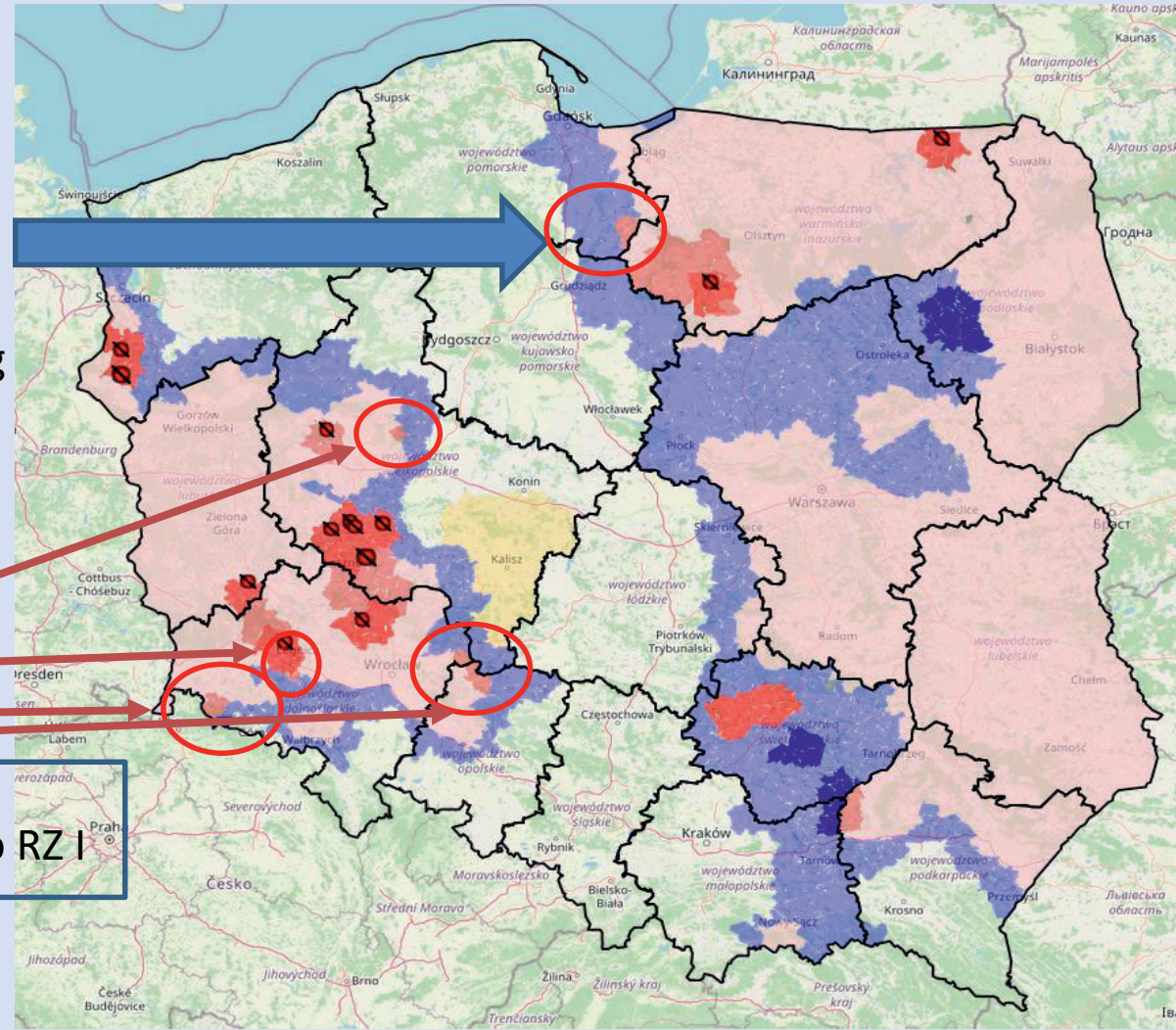
5

- Podkarpackie region – area of 4 municipalities in mielecki district, in which a total 52 outbreaks were confirmed in 2021, the last one confirmed on 30.09.2021 - reversion to RZ II
- Małopolskie region – area where in total 4 outbreaks were confirmed in 2021, the last one confirmed on 21.10.2021- reversion to RZ I **(no outbreaks in WB)**
- Świętokrzyskie region – area where in total 3 outbreaks were confirmed, the last one confirmed on 23.10.2021 - reversion to RZ I **(no outbreaks in WB)**
- Świętokrzyskie region – area where 2 outbreaks were confirmed - the last one in Chmielnik on 27.10.2021 - - reversion to RZ I **(no outbreaks in WB)**

Amendments of RZ II and I



WB shot in RZ I,
male,
20 months old,
60 kg
sanitary shooting



WB's in RZ II –
close proximity to RZ I



Thank you