

# African Swine fever in wild boar in Belgium

PAFF Committee 25-26 February 2019



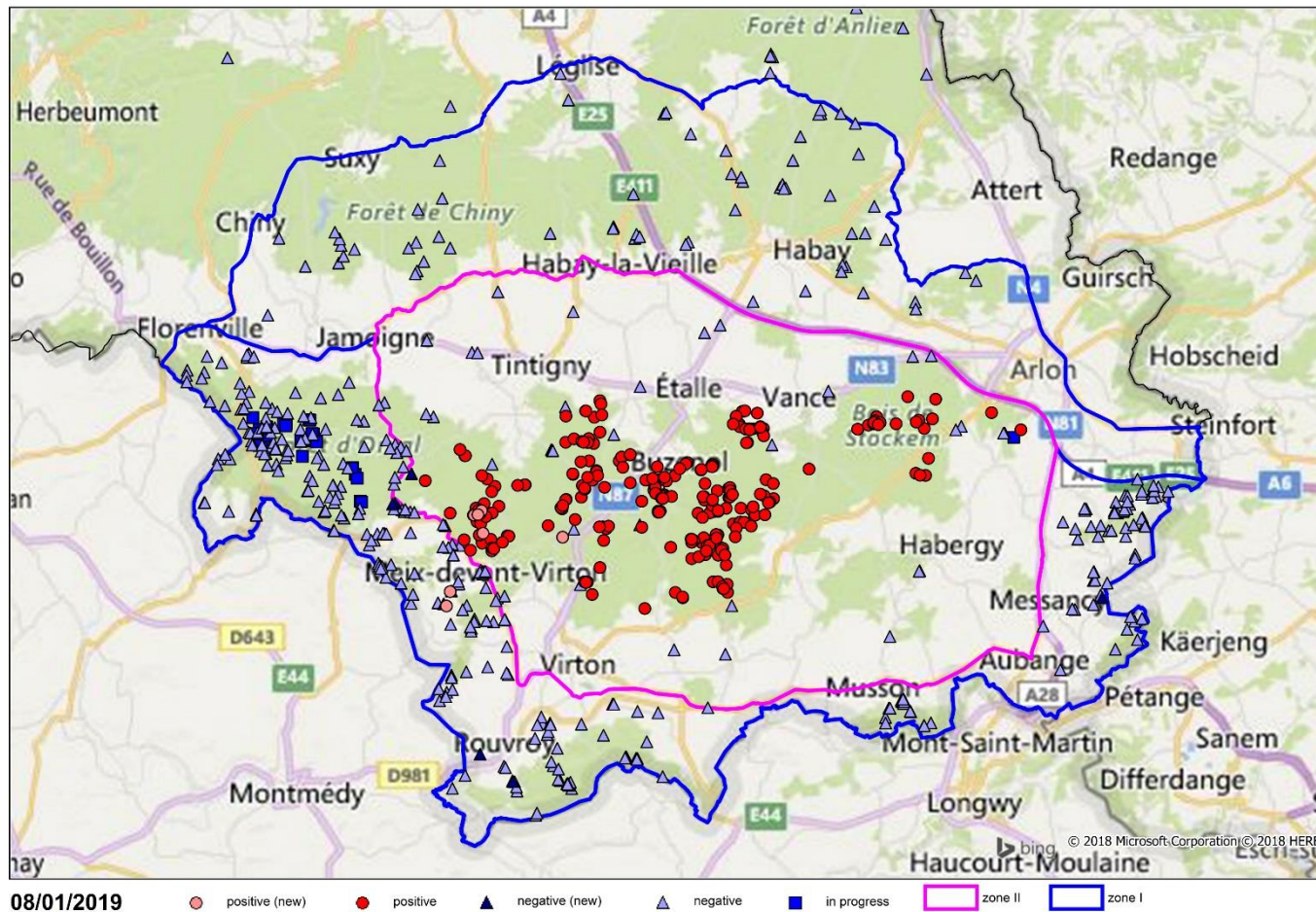
# Confirmed cases in wild boar

On the 16<sup>th</sup> February 2019 :

- **1 539 wild boars sampled**
- **543 confirmed cases of AVP in wild boar**
  - **542 in the areas in Part II of the annex of Decision 2014/709/EU**
  - **1 in the areas in Part I of the annex of Decision (EU) 2019/315 before the last modification**  
**(1 adult female wild boar found dead)**

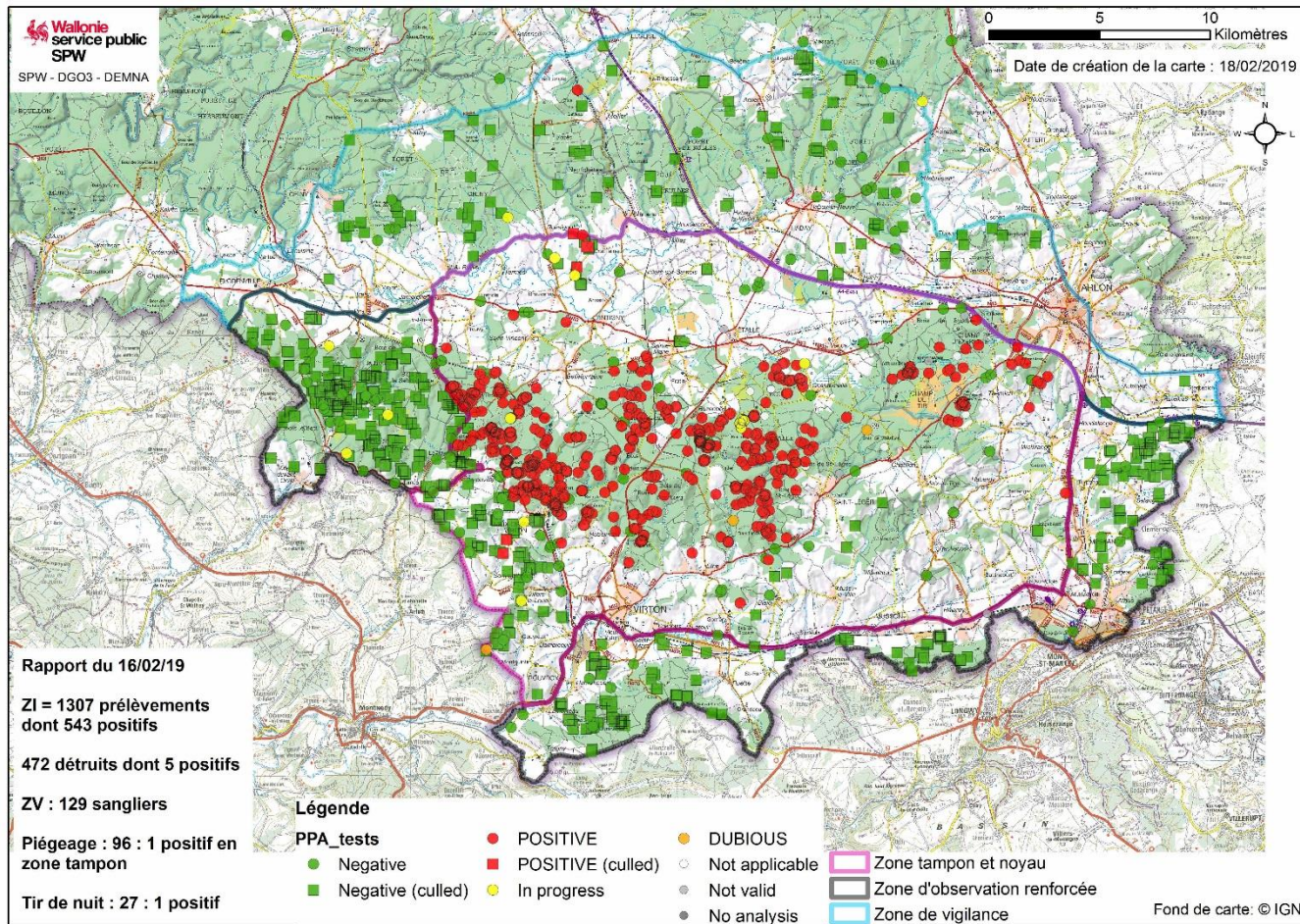


# Confirmed cases in wild boar 8 January 2018



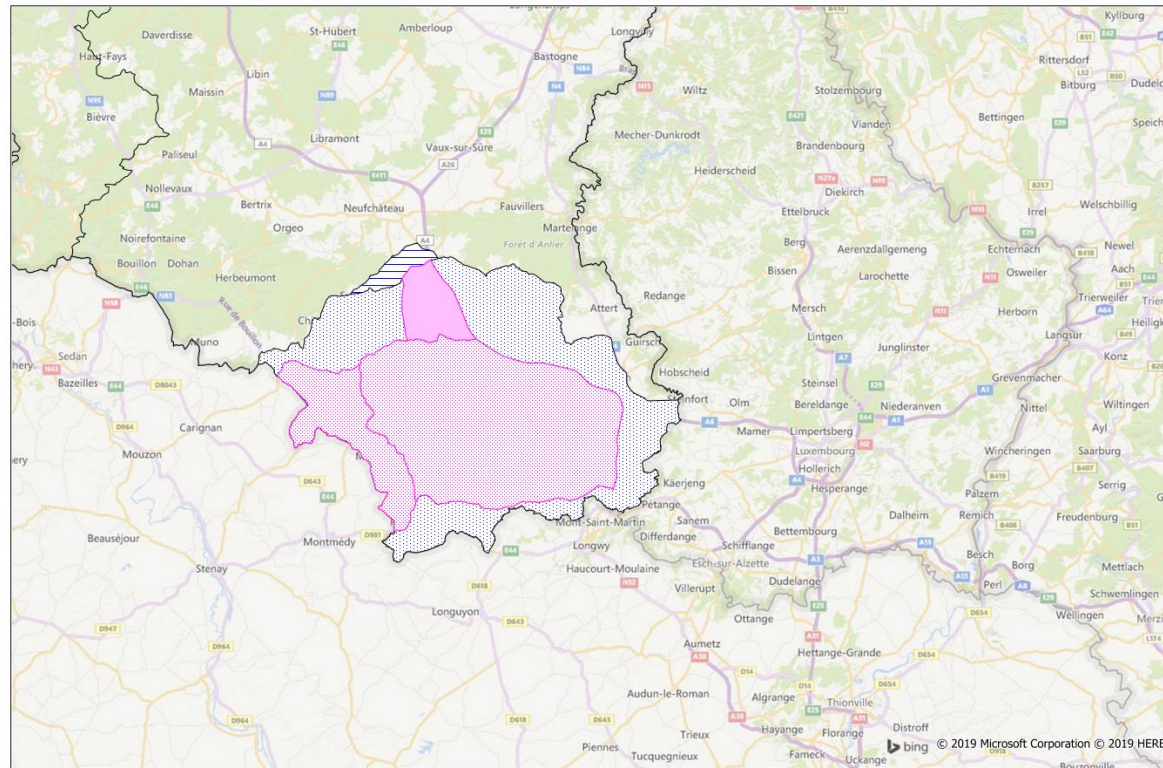


# Confirmed cases in wild boar 18 February 2018





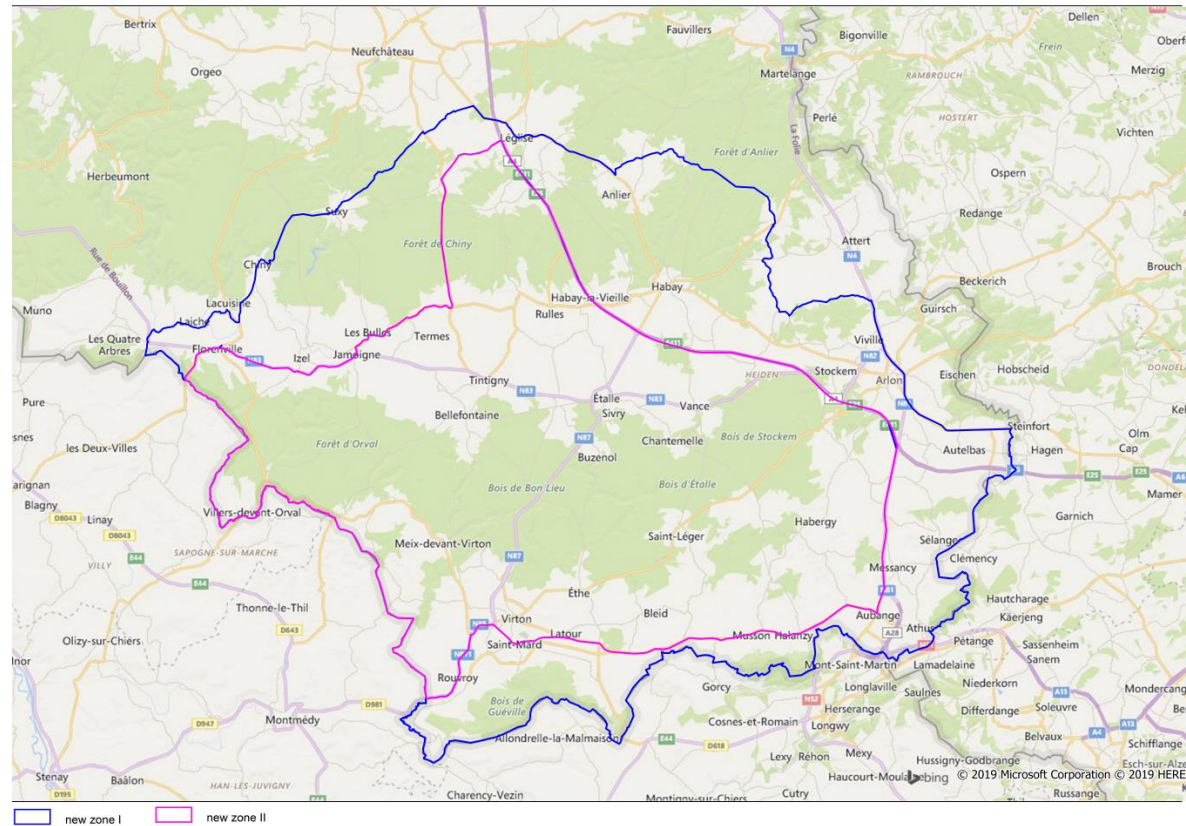
# Actual areas in the annex of Decision 2014/709/EU as modified by Decision (EU) 2019/315



old zone II    new zone II    old zone I    new zone I

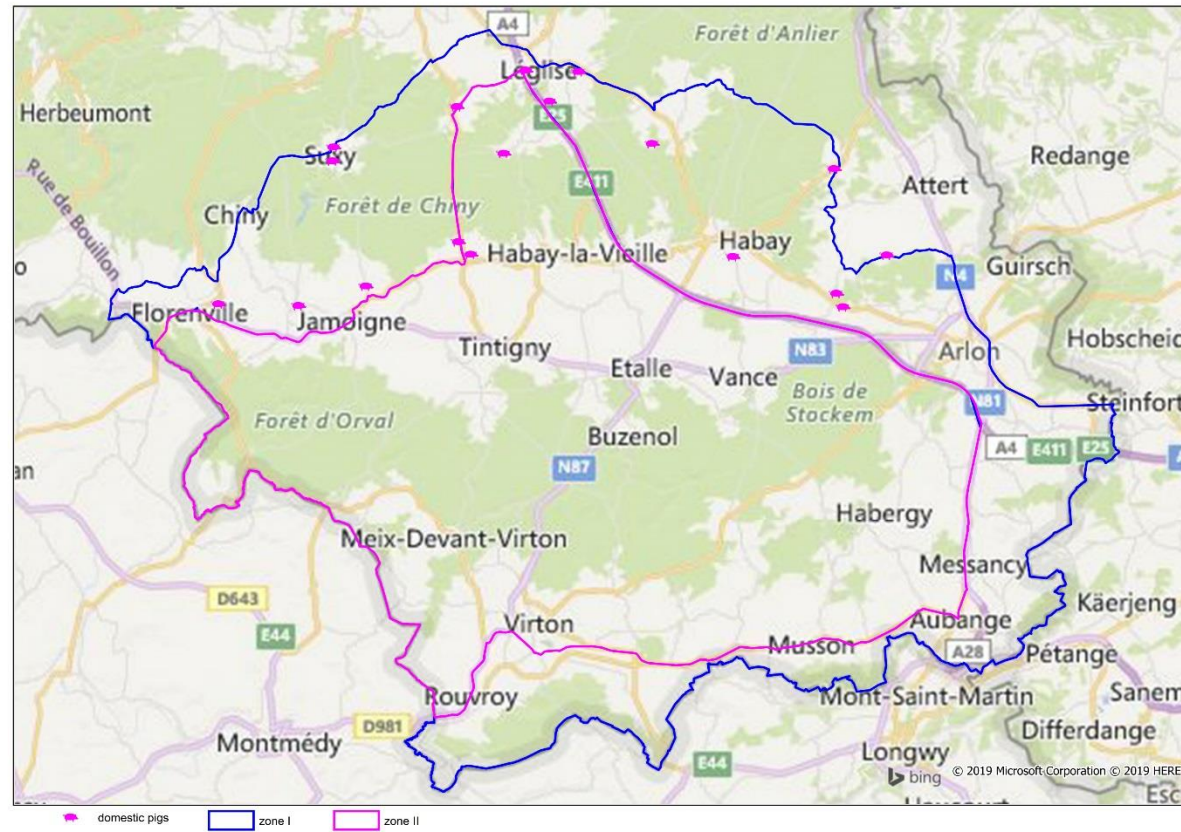


# Actual areas in the annex of Decision 2014/709/EU as modified by Decision (EU) 2019/315





# Actual areas in the annex of Decision 2014/709/EU as modified by Decision (EU) 2019/315



No outbreaks in domestic pigs!





# Measures in the infected zone (Wal. Region)

## Wild boar

### Area in part I of the annex

#### – Reduction (eradication) of the wild boar population

- Hunters must organize wild boar culling under strict conditions
- Trained hunters, forest guards and agents of the Walloon administration
- Shooting day/night, with or without baiting,... drive hunting with dogs forbidden, single hunting and silent drives allowed
- Trapping and culling of wild boar
- Biosecurity measures
- Testing of shot wild boar
- Rendering of carcasses of shot wild boar
- Compensation per wild boar for the management of the culled wild boar with respect of biosecurity rules and transport to the collection center



# Measures in the infected zone (Wal. Region)

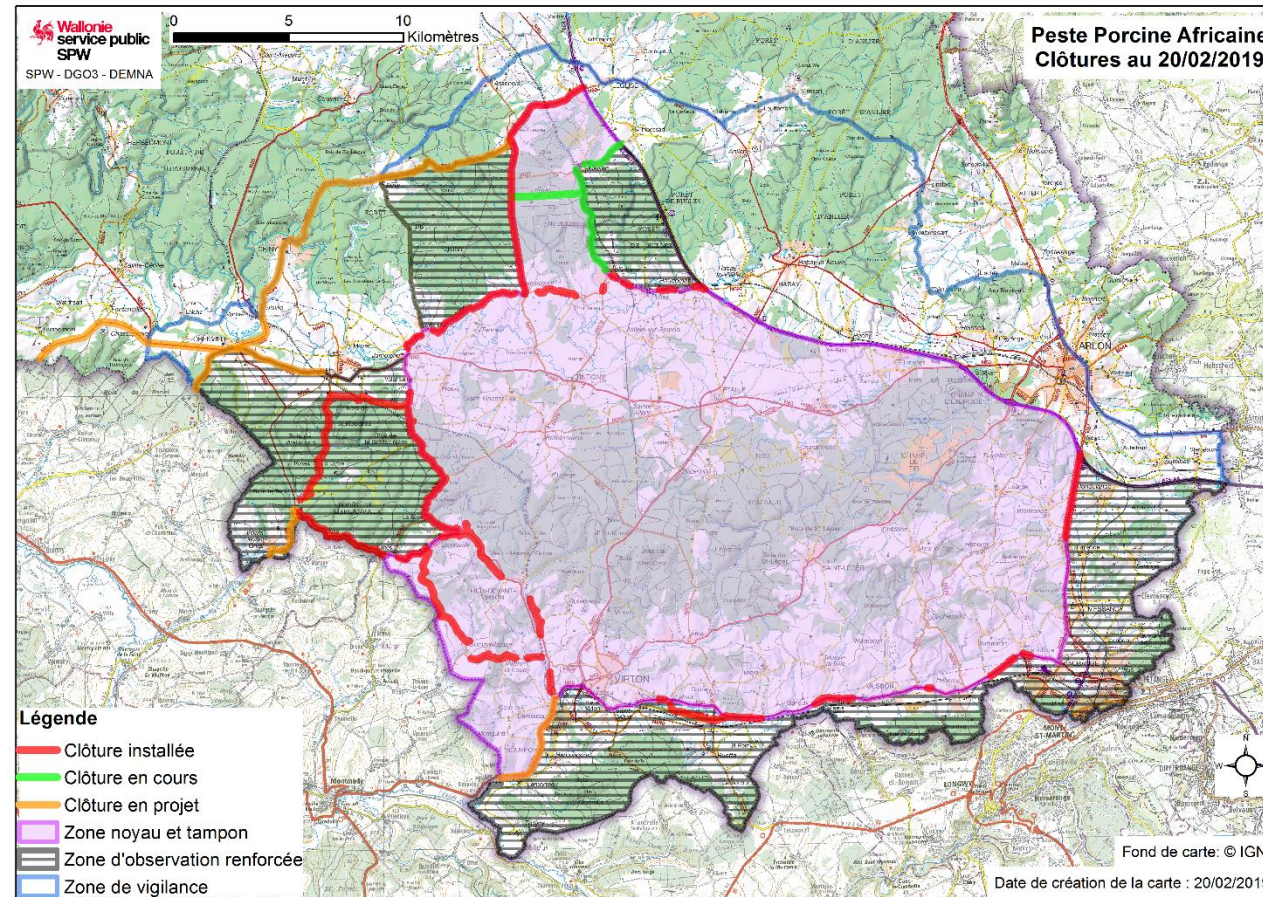
## Wild boar

- 472 wild boar shot in part I of the annex: 5 positive for ASF
- 96 wild boar captured: 1 positive for ASF
- 28 wild boar shot at night: 1 positive for ASF



# Measures in the infected zone (Wal. Region) Wild boar

- New fences





# National measures - Pigs

- Additional measures following the introduction of ASF
  - All assemblies of pigs prohibited
  - Only 1-1 transports of pigs (except to the slaughterhouse)
  - No visitors allowed to pig farms if not needed
  - All introduced pigs must pass quarantine
  - Increased surveillance: no treatment of sick pigs without sampling for ASF tests: 3 487 pigs tested on 849 pig farms: all negative!
- Raising awareness of farmers, hunters and vets
- Biosecurity



# Collaboration with neighbouring countries

- Regular meetings for exchange of knowledge and experience and aligning measures taken



# Conclusions

- Measures for the control of ASF are in place
- All concerned partners are actively involved
- Close collaboration with neighboring countries
- Prepared in case an outbreak would occur in domestic pigs





# Thank you for your attention

