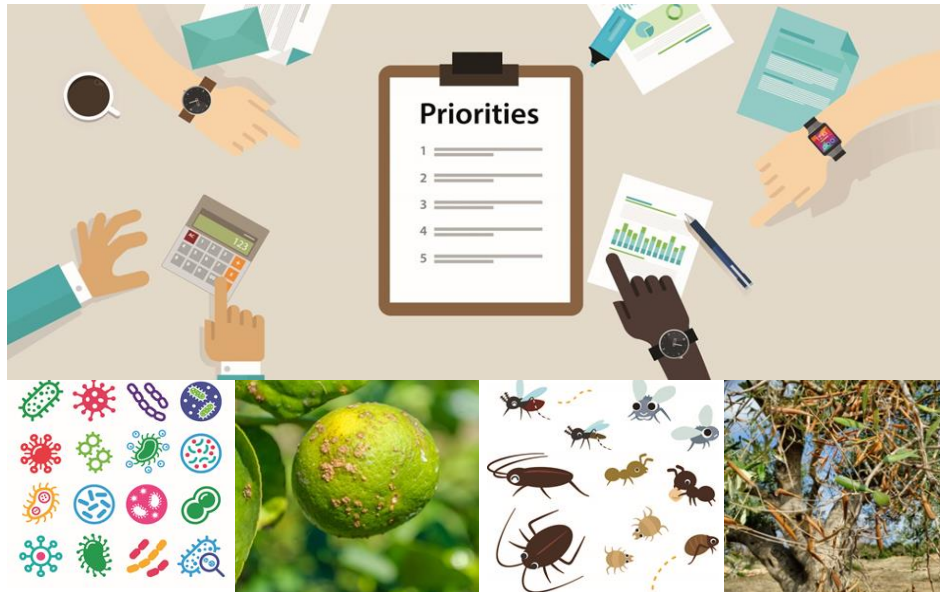


# Agenda item #2: State of play of data requested as regards forestry, UNESCO World Heritage Sites and other relevant cultural/historical heritage sites



**Berta Sánchez**  
Jesús Barreiro-Hurle  
Emilio Rodríguez-Cerezo  
Iria Soto-Embodas

European Commission  
Joint Research Centre (JRC)  
Unit D.4 Economics of Agriculture

# Update on data requested to MS on forestry related data

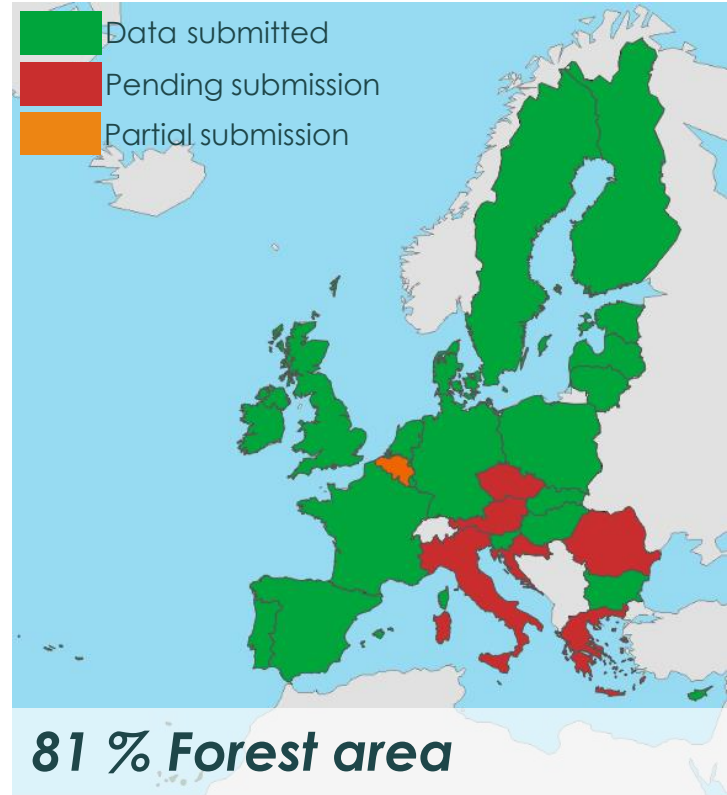
# FORESTRY DATA REQUEST

## INFORMATION REQUESTED

1. *Woodland/Forest area*
2. *Growing stock*
3. *Wood price*
4. *Trade*
5. *Employment*
6. *Forest sustainable management*
7. *Utilization as streets/park trees*

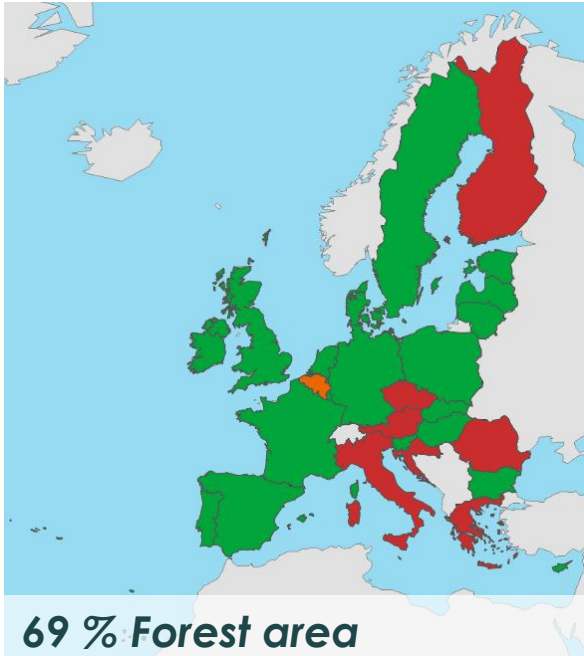


## TEMPLATES PROVIDED



# FORESTRY DATA REQUEST

## 1. Forest area



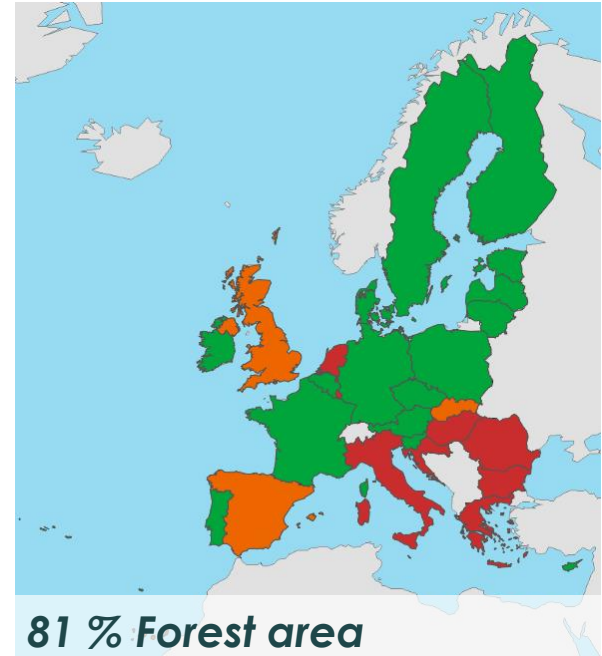
Data sources: MS

## 2. Growing stock



Data sources: MS + Forest Europe  
"State of the Forest Sector 2015"  
database

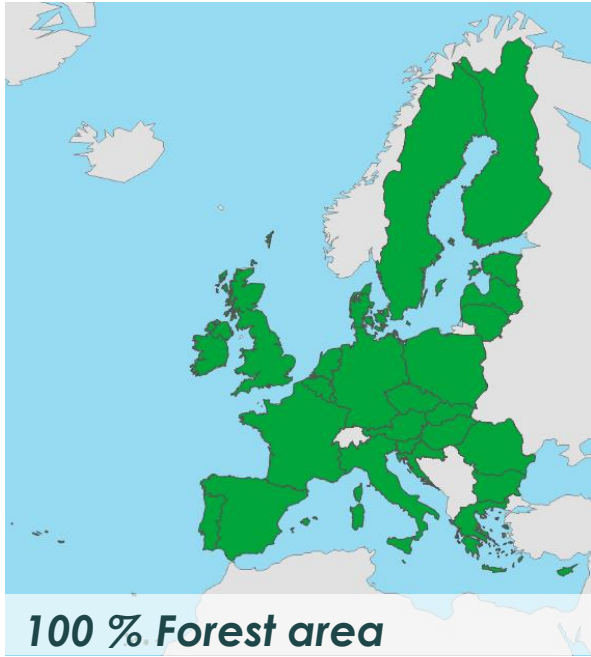
## 3. Producer prices



Data sources: MS + UNECE

# FORESTRY DATA REQUEST

4. Labour / 5. Trade / 6. SFM



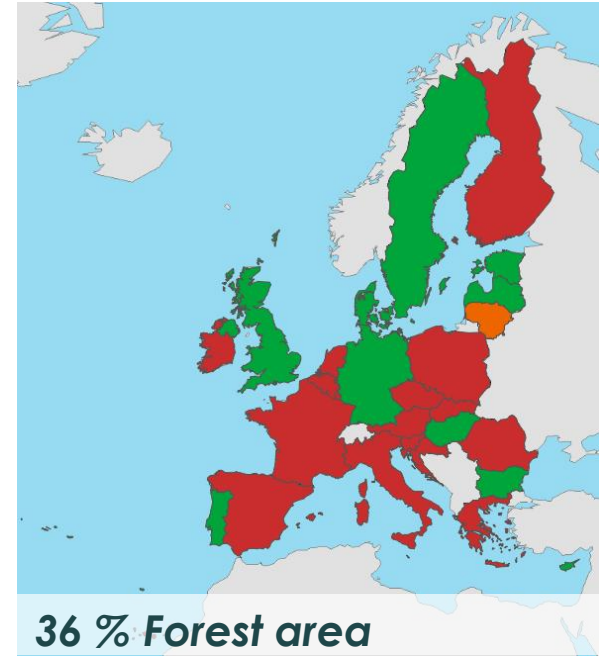
## Data sources

Labour: FAO ("2015 Global Forest Resource Assessment") + EUROSTAT

Trade: COMEXT-Analytical

Sustainable Forest Management: FAO ("2015 GFR Assessment")+ FSC database

7. Parks and street trees



Data sources: MS



**Please, consult with colleagues with relevant knowledge on the field**

**Potential request extension on citrus spp**

# Update on data requested to MS on affected hosts in cultural heritage landmarks

# UNESCO World Heritage List request to MS

## Information requested:

1. Presence of susceptible hosts in **UNESCO World Heritage List sites**
2. Presence of susceptible hosts in **Coat of arms**
3. Presence of susceptible hosts in **anthem**
4. Presence of susceptible hosts in **relevant works of art**
5. Presence of other susceptible hosts that can be important tree species in terms of **cultural or historical heritage**

# UNESCO World Heritage List request to MS

## Timeline



Updated information can be also incorporated until 31 January 2019



# UNESCO World Heritage List request to MS

We really acknowledge your support on this request - one contributor per MS will be included in the JRC report

## Data submitted on the request



Data submitted



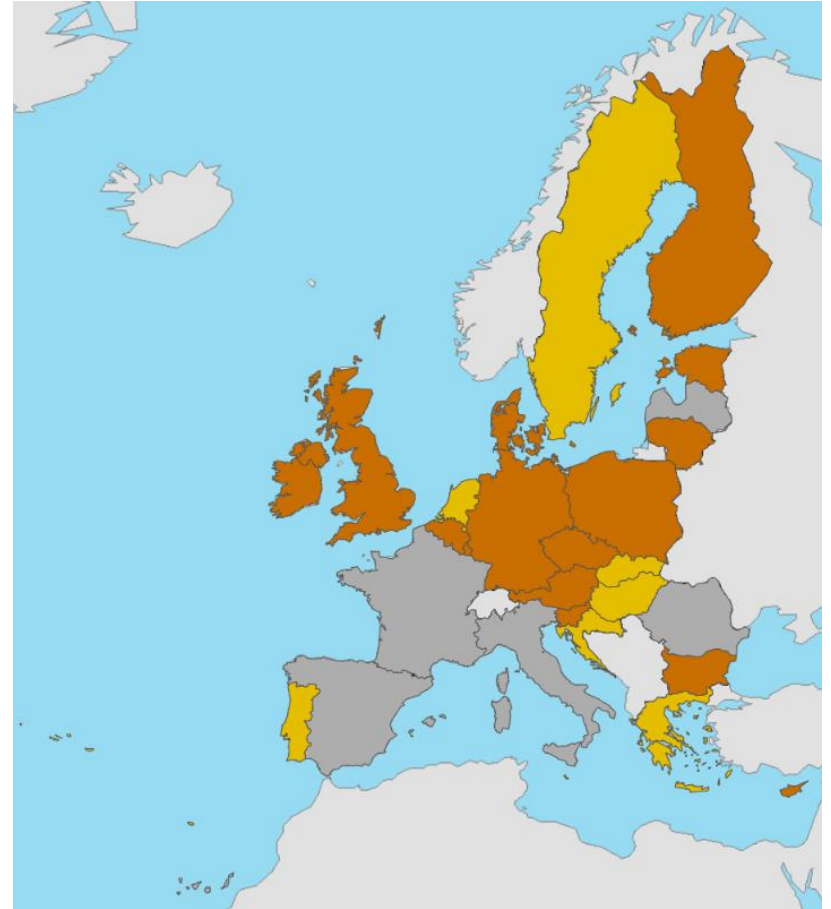
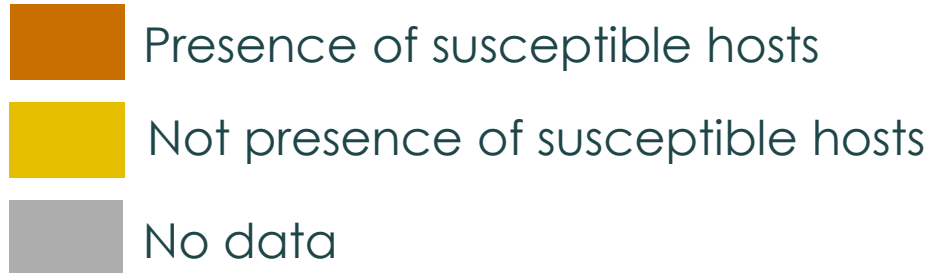
Pending submission





# UNESCO World Heritage List request to MS

Presence of susceptible hosts in coat of arms, anthem, relevant works of art or other MS cultural or historical heritage importance



# UNESCO World Heritage List request to MS

Historic Town of Banská Štiavnica and the  
Technical Monuments in its Vicinity (Slovakia)



**Highest presence of  
susceptible hosts  
(about 90)!**



# UNESCO World Heritage List request to MS

These UNESCO sites could be affected by *Tilletia indica*, *Synchytrium endobioticum* and *Clavibacter michiganensis* ssp. *Sepedonicus*



**Fertö / Neusiedlersee  
Cultural Landscape  
(AUSTRIA)**



**Agricultural Landscape of  
Southern Öland (SWEDEN)**



**Bardejov Town  
Conservation Reserve  
(SLOVAKIA)**

# UNESCO World Heritage List request to MS

These UNESCO sites could be affected by *Xanthomonas citri*, *Phyllosticta citricarpa* and *Candidatus liberibacter*

(cc) Maarten Sepp



**Monasteries of Daphni,  
Hosios Loukas and Nea Moni  
of Chios (GREECE)**

© UNESCO



**Old City of Dubrovnik  
(CROATIA)**

© UNESCO



**City of Valletta  
(MALTA)**

# UNESCO World Heritage List request to MS

**Quercus sp. and Tilia sp.** are one of the most important tree species in terms of MS cultural or historical heritage and presence on the coat of arms, anthem, and work of arts



Coat of arms (LITHUANIA)



Coat of arms (BELGIUM)

# Thanks for your attention

[Jesus.BARREIRO-HURLE@ec.europa.eu](mailto:Jesus.BARREIRO-HURLE@ec.europa.eu)

[Berta.SANCHEZ@ec.europa.eu](mailto:Berta.SANCHEZ@ec.europa.eu)

[Emilio.RODRIGUEZ-CEREZO@ec.europa.eu](mailto:Emilio.RODRIGUEZ-CEREZO@ec.europa.eu)

[Iria.SOTO-EMBODAS@ec.europa.eu](mailto:Iria.SOTO-EMBODAS@ec.europa.eu)

