

EU-Animal Welfare Platform – Subgroup labelling – Best practices Germany

25. January 2023



Animal welfare in Germany

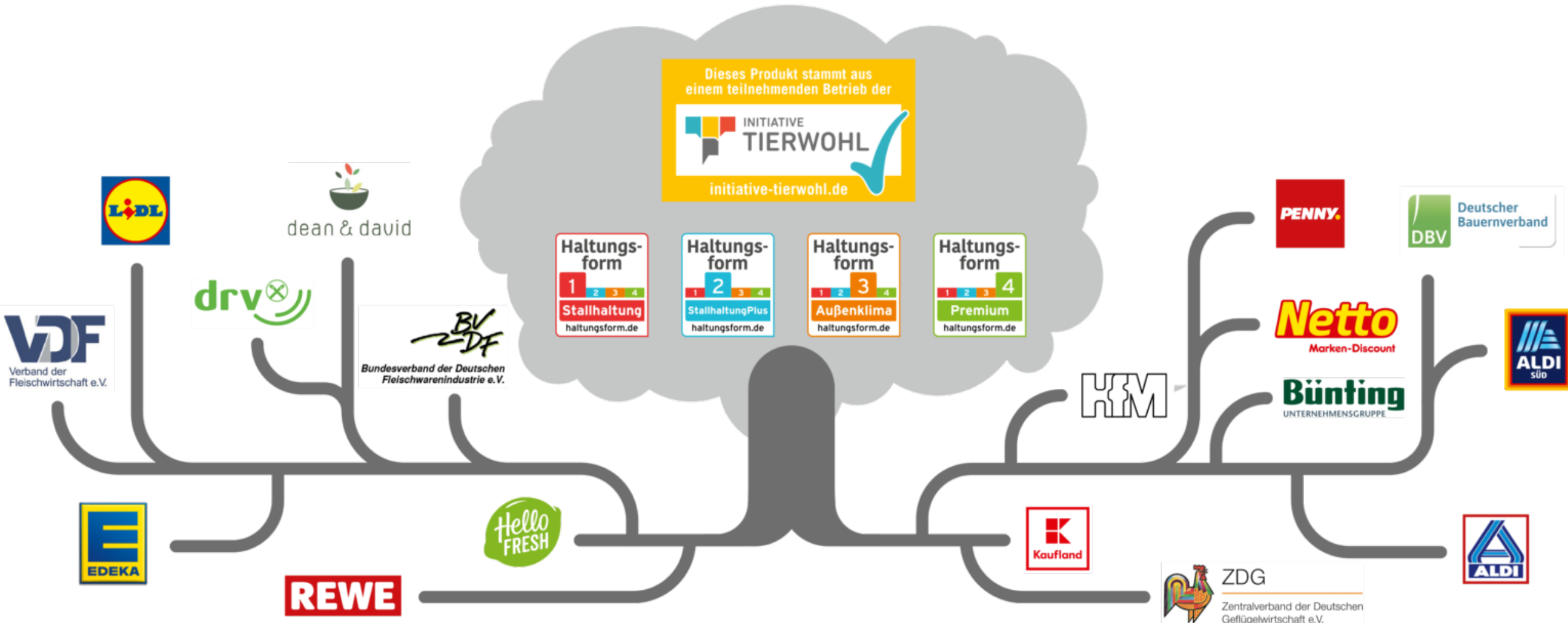


Important developments so far:

- **Federal animal welfare label:** announced twice (2017/2019) but not delivered
- „Initiative Animal Welfare“ ITW (kick-off 2015 as funding programme)
- Stakeholders develop private husbandry labelling scheme „**Haltungsform**“ (2019)



Animal welfare – a priority for retailers



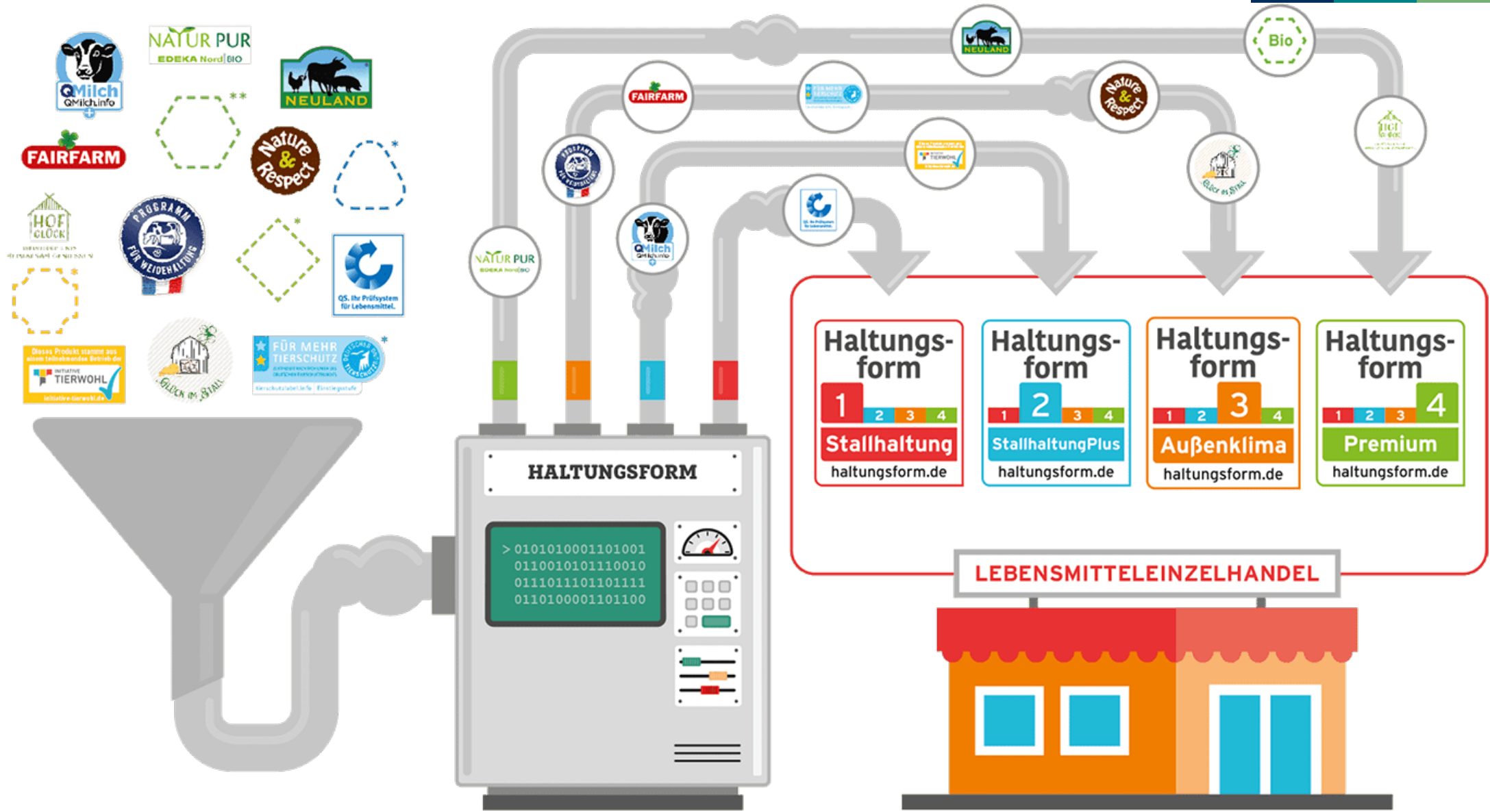
Animal welfare – a priority for retailers

Husbandry form labelling (Haltungsform)

- Orientation for consumers on multitude of different animal welfare programmes
- Types of meat:
poultry, pork, beef, rabbit – fresh, frozen and processed; dairy cows
- Four levels:



Husbandry form labelling – retail: how does it work?



Anbieter der Haltungsformen

	Hähnchen	Pute	Eute	Schwein	Rind	Kaninchen	Milch
Haltungsform 1 Stallhaltung haltungsfarm.de							
Haltungsform 2 haltungsfarm.de							
Haltungsform 3 AusdenKühe haltungsfarm.de							
Haltungsform 4 Premium haltungsfarm.de							

*Der Haltungsform Stufe 4 sind alle Bio-Standards zugeordnet, die mit ihren Logos auf Fleischmarken dieser Tierart ausgetrieben werden. Das umfasst sowohl den EU-Bio-Standard, als auch alle Bio-Anbauverbände (Naturland, Bioland, Demeter, ...)

Animal welfare – a priority for retailers – practical examples



Animal welfare – a priority for retailers

Follow-up at EU-level?

- Need for an EU-wide framework - classification system
- Build on existing knowledge, experiences and consumer trust at Member State levels
- Need for practical solutions and swift action
- Consider producer level – financing of higher animal welfare standards
- Planning security – clear-cut criteria
- Avoid competitive distortions – imported animal products to be included
- Scope: all farmed species; all stages of the value chain