



*Ministero della Salute*

# EHDV in Italy

**Directorate General for Animal  
Health and veterinary medicinal  
products**



# Map



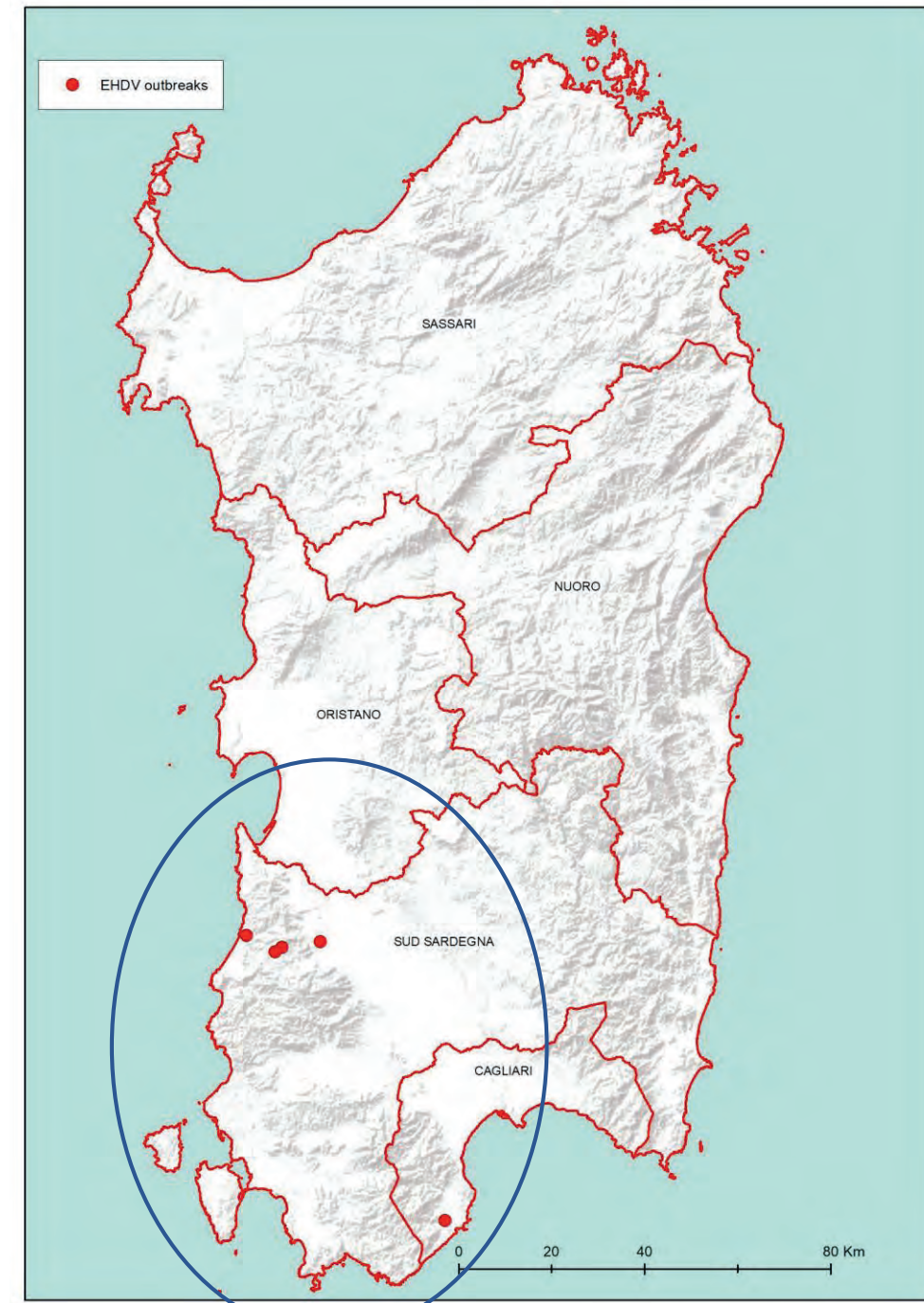
# Few information about the disease

- Reoviridae, Orbivirus
- Until 2006 it was known as a deer's diseases. After it started to be isolated also in bovines in North Africa (Tunisia, Marocco, Algeria), Turkey and Israel.
- 7 serotypes known (1-2-4-5-6-7-8) + 2 unknown
- In 2021 in Tunisia was confirmed EHDV 8 more pathogenic for cattle
- Diagnostic test: PCR, ELISA, Seroneutralization
- Haemorrhagic symptoms – decrease of production
- 10/14 days EHP culicoides
- 2/10 days incubation period in bovine
- 60 days viremia (reservoir)
- Antibodies after 7/10 giorni
- Really short viremia in sheeps and goats



# Sardinia

- 8 November 2022 first confirmation in Europe of EHDV in a bull
- 4 holdings with infected animals
- Serotype 8 as the one circulating in Tunisia
- Wild animals: 15/11/2022 a deer caught in Pula (Cagliari Province) was detected positive with RT-PCR in blood. Spleen and lymph nodes were RT-PCR negative, so the infection was recent
- Surveillance Plan is implementing by the Region with the scientific support of the Regional Veterinary Epidemiology Centre, the National Reference Centre for Veterinary Epidemiology, Programming, Information and Risk Analysis and the National Reference Centre for Exotic Diseases of Animals





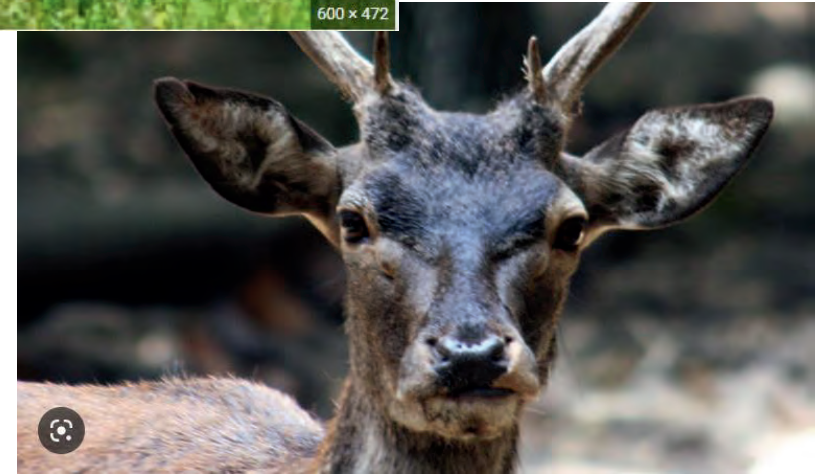
# The first infected animal



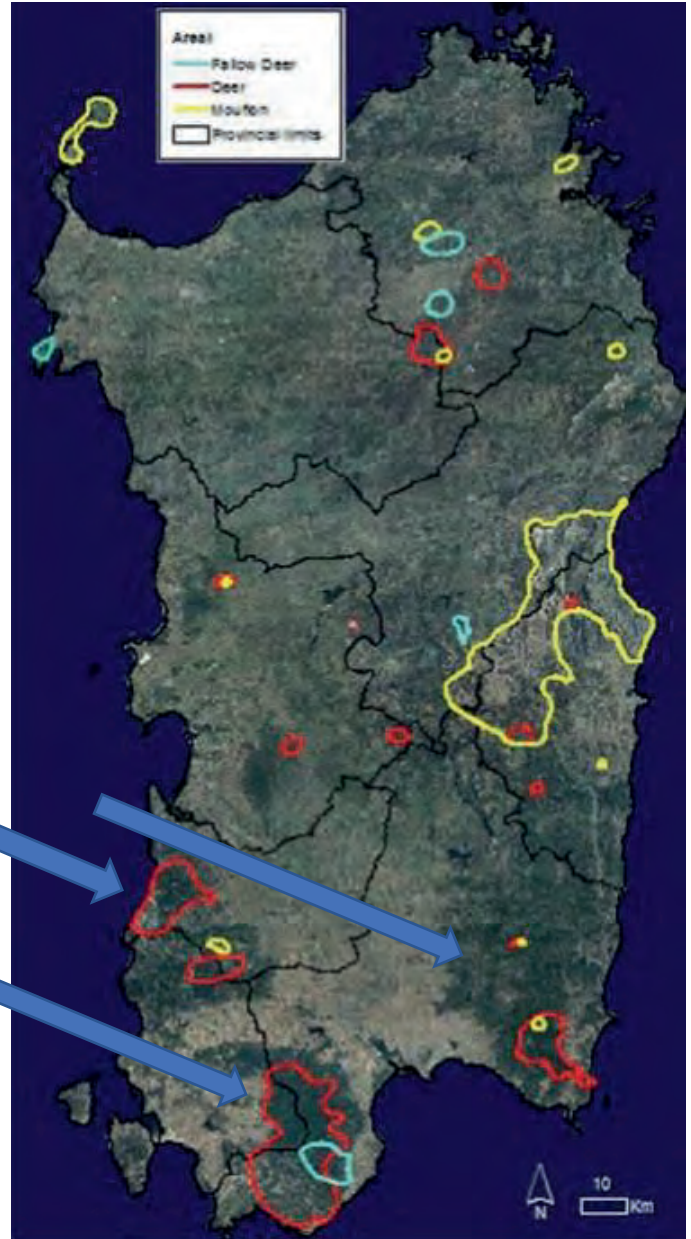


# Surveillance Plan in Sardinia

- Surveillance in domestic
  - High risk area to define the spread of the disease
  - In the rest of the Region in parallel to BT surveillance
- Entomological surveillance
- Surveillance in wild



# Wild population





# Sardinia

## Gaia Observer



Mockup version for  
monitoring ASF and EHDV

App for operators involved in ASF  
and EHDV monitoring in wild  
animals

15:21

Aggiungi rilevamento

CARCASSA EHDV DETAGLIATA

Sesso e classe di età

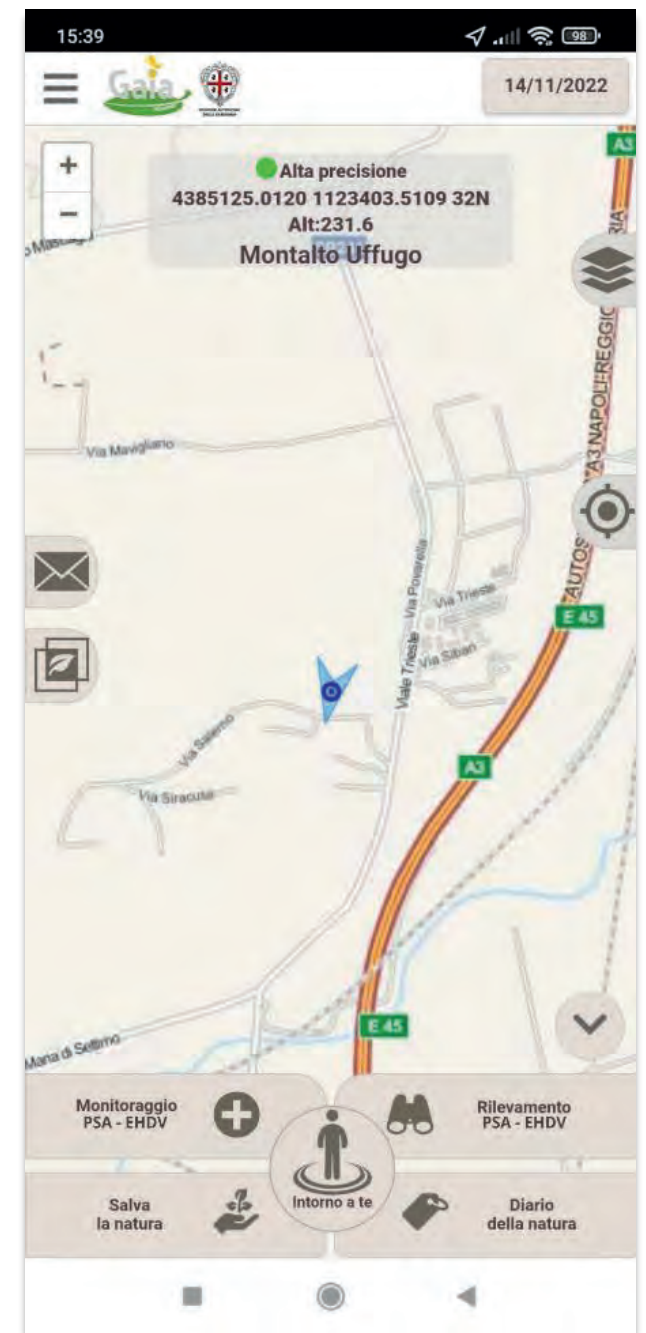
- Maschio fusone (1-2 anni)
- Maschio sub-adulto (2-4 anni)
- Maschio adulto (4 o più anni)
- Femmina giovane subadulta (1-3 anni)
- Femmina adulta (3 o più anni)
- Piccolo dell'anno (meno di 1 anno)

Tipo campione

- O.lungo
- Cute
- Carcassa

Nota

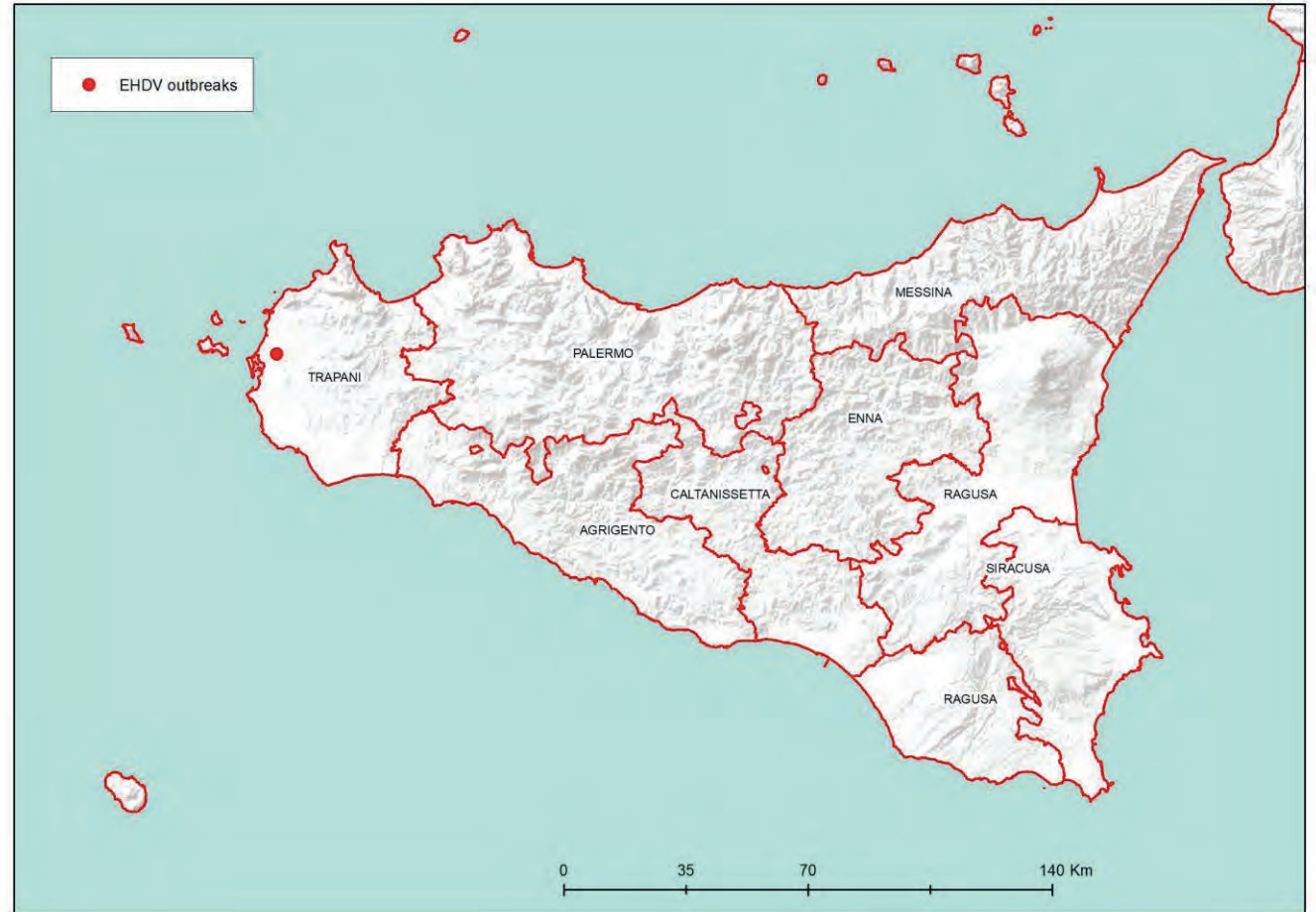
Esci





# Sicily

- 1 Farm with 8 infected animals (3 with symptoms) RT-PCR and ELISA on a total of 26 animals tested
- Scialorrea, depression, fever, bloody gumline, hot and strongly reddened udders
- 1 cow died and the others healed





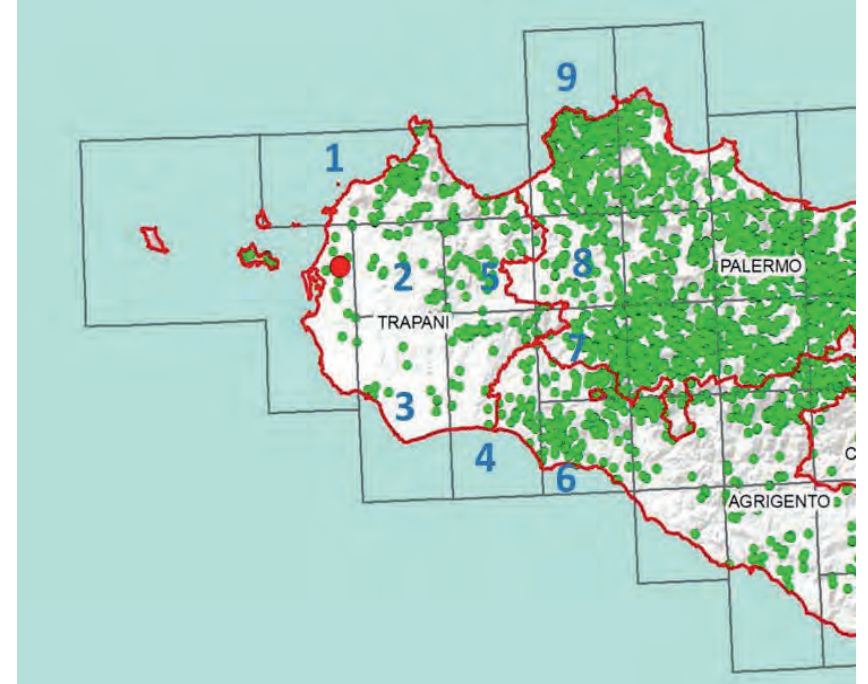
# The infected animals





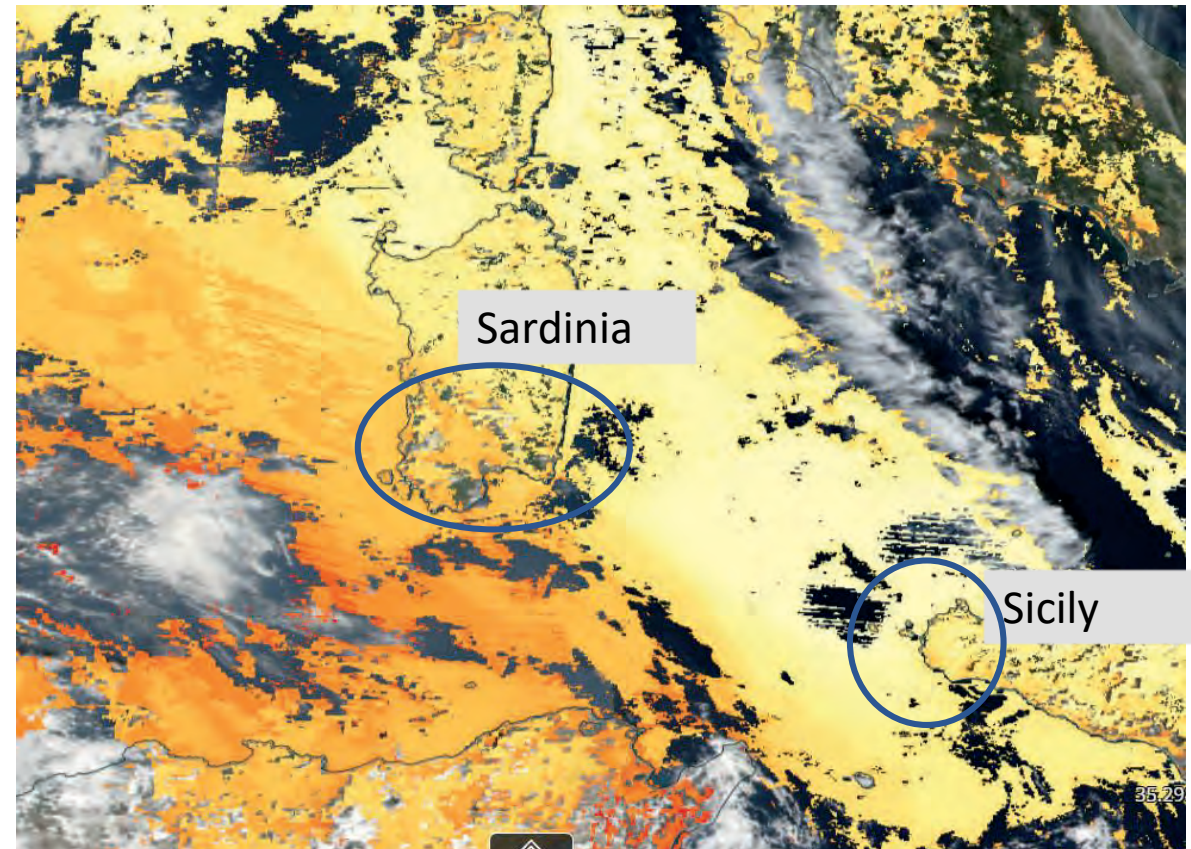
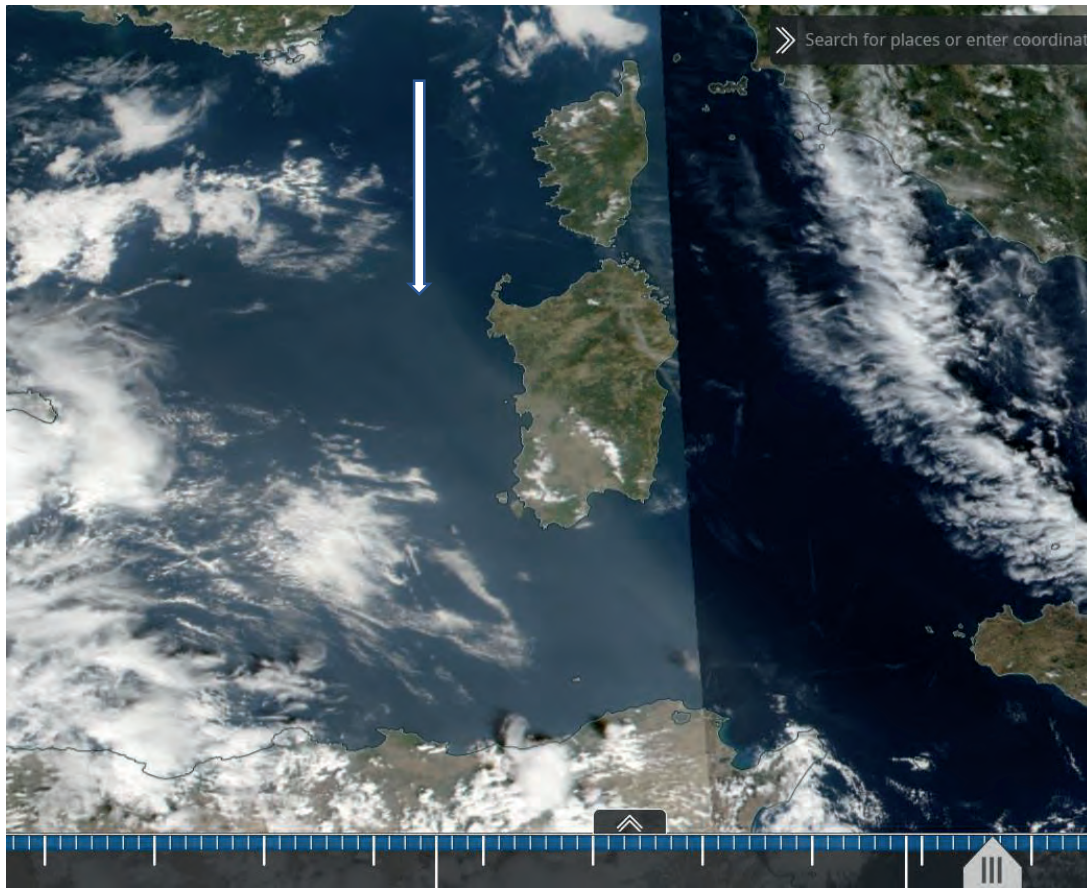
# Surveillance Plan in Sicily

- scientific support of the Regional Veterinary Epidemiology Centre, the National Reference Centre for Veterinary Epidemiology, Programming, Information and Risk Analysis and the National Reference Centre for Exotic Diseases of Animals
- 1000 samples coming from Brucellosis surveillance plan activity, representative of the whole regional territory (islands included)
- Entomological surveillance
- Around the outbreak, the territory has been defined in a grid divided into 9 quadrants of 20 km per side
  - Entomological surveillance
  - 6 farms: serological test in 10 animals for each farm (5% prevalence and 95% confidence)



# When EHDV has arrived in Italy?

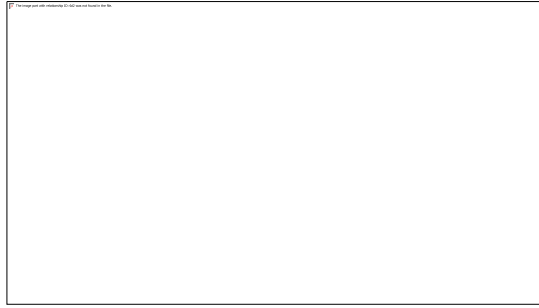
All information we have, seem to confirm that the disease would be arrived between the end of September and at the beginning of October, due to the storm and seeds coming from the north Africa (Tunisia).





# Actions taken in Sardinia and Sicily

- Movements from the two Regions are blocked as preventive measure
- According to Reg. (UE) 2018/1882 this disease is listed as D and E categories
- According to artt. 124 and 125 of Regulation (EU) 2016/429, operators must apply all measures aimed to guarantee that movements of animals do not compromise the health status at the place of destination.
- *Implementing Act 2021/403, Chapter I: II.2.5. They come from establishments situated in an area of at least 150 km radius around those establishments in which infection with epizootic haemorrhagic disease virus has not been reported in kept animals of listed species for that disease during the last 2 years prior to departure.*
- Entomological surveillance: is ongoing in both regions
  - Retrospective survey until the beginning of August: negative



Thanks for your kind attention