



Lessons learned from audit in Slovenia on exports of live animals by sea

Terence Cassidy

Unit F.2

Health and Food Audits and Analysis

DG Health and Food Safety

Dir. F's project on enforcement of animal welfare during transport

Suitability and effectiveness of measures to prevent injury or undue suffering during transport

Project now focuses on transport by sea @ exit points in

ES FR IE HR RO SI

*Audits to **ES HR SI***



Trade via Koper, Slovenia

*1,925 road consignments
(mostly cattle from Hungary, Croatia and Germany) in 2017*

*71 shipments to non-EU countries
(Lebanon, Israel, Syria, Jordan and Egypt).*



Planning in Member States of departure

PLANNING

1.1. ORGANISER Name and address ^(a) ^(b)	1.2. Name of the person in charge of the journey
	1.3. Telephone/Fax
2. TOTAL EXPECTED DURATION (hours/days)	
3.1. Place and country of DEPARTURE	4.1. Place and country of DESTINATION

Inadequate planning MS of departure

6. LIST OF SCHEDULED RESTING, TRANSFER OR EXIT POINTS				
6.1. Name of the places where animals are to be rested, or transferred (including exit points)	6.2. Arrival		6.3. Length (in hours)	6.4. Transporter's name and authorisation No (if different from the organiser)
	Date	Time		
Road journey OK				
Name of a livestock vessel but...				...No transporter for the journey by sea
7. I, the organiser, hereby declare that I am responsible for the organisation of the abovementioned journey and I have made suitable arrangements to safeguard the welfare of the animals throughout the journey in accordance with the provisions of Council Regulation (EC) No 1/2005				
8. Signature of the organiser				

Livestock vessel inspections

Regulation (EC) No 1/2005 (Annex I Chapter IV section 1)

- *Strength of pen rails and decks;*
- *Ventilation*
- *A continuous supply of water;*
- *A drainage system;*
- *Sufficient lighting;*
- *Alarms;*
- *Power and secondary source of power.*



Vessel approval and inspections

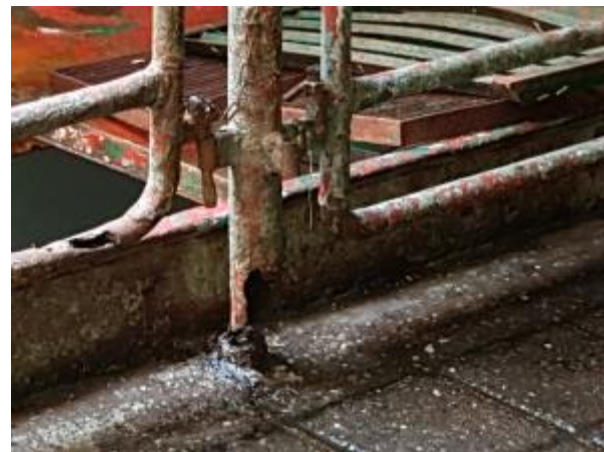
Inadequate systems for ventilation, water supply, drainage, lighting, alarms.

The same vessel loaded animals in:

SI, RO, ES in 2017

RO and ES in 2018

Approved in FR 2013



Member States with exit points at ports

- *Check systematically vessels before loading even if the vessel is approved,*
- *Make sure there is an authorised transporter for the sea journey;*
- *Support inspectors on "non-veterinary" requirements of livestock vessels (see network document)*



Member States of places of departure

Ensure that organisers plan properly with:

- *A road transporter;*
- *A transporter for the sea journey;*
- *Booking of control posts;*
- *Access to contingency plans (e.g. refusal of loading)*

Verification of planning is done as part of your controls of journey logs

Thanks for your attention

NETWORK DOCUMENT ON LIVESTOCK VESSELS



CONTENTS

Article 19 of Regulation (EC) No 1/2005.....	3
Certificate of approval of livestock vessels.....	3
SECTION 1 of Chapter IV of Annex 1 to Regulation 1/2005.....	6
Construction and equipment requirements for livestock vessels	6
Article 20 of Regulation 1/2005	11
Livestock vessel inspection on loading and unloading	11