



European Food Banks Federation



EU Platform FLW / Meeting of the Food Loss and Waste Monitoring sub-group

**Monitoring the activity of European Food Banks.
How data and analytics can help to react to
unprecedented demand and uncertainty**

ANGELA FRIGO
Secretary General, European Food Banks Federation

Online, 11 October 2023



Main features of the online Observatory on Food Donation



Cloud-based data management and storage system



Intuitive and user-friendly design



Personalised interface for each FEBA Member



Food Matrix to collect data on sources of Food In / Out



Dashboard for data visualisation



Efficient data validation process



Data Collection YEAR-3 | macro-objectives



1. Improvement of collection, analysis, and dissemination of data on the activities of FEBA Members



Project period 1
December 2022 – May 2023



2. Enabling the use of the online Observatory on Food Donation at regional/local level



Project period 2
June – November 2023



Pursuit of macro-objective 1



95 indicators grouped into 11 categories

1. Food Banks
2. Recipients
3. Food in
4. Food out
5. Non-food in
6. Non-food out
7. Financials
8. Human resources
9. Infrastructure
10. Energy sources
11. Partnerships

10 KPIs

Among them:

Number of Food Banks

Number of charitable organisations

Number of end beneficiaries

Total quantity of food redistributed

Number of co-workers



Collection, review, and analysis of 2,850 indicators to quantify the contribution of the FEBA membership



CONTRIBUTION OF FEBA MEMBERSHIP TO OUR CIRCULAR FOOD SYSTEM

In 2022, the European Food Banks Federation (FEBA) worked in collaboration with 23 Full Members and 7 Associate Members in 30 European countries*.

876,316

tonnes of food redistributed



* In some countries such as Estonia, Germany and the Netherlands, FEBA Members redistribute food not only to other charitable organisations but also provide food directly to end beneficiaries. This is the aggregation of data provided by FEBA Full Members and Associate Members at European level. In the case of Tafel Deutschland e.V., the data for food quantities is based on an estimation.



Pursuit of macro-objective 2



YEAR-3 pilot member: Food Bank Greece

- **Adaptation** of the online Data Collection platform in close collaboration with the FEBA Member
 - ➔ Design of **tailored online surveys** to gather quantitative and qualitative data according to the needs and suggestions
 - ➔ **Translation** of the surveys into the national language, i.e. Greek
- Organisation of a **training session** for the local Food Banks
- **In 2024:** entry of 2023 data by local Food Banks, automatic aggregation and review by national FEBA Member





European Food Banks are a critical lifeline to promote access to food

Impact of the socio-economic crisis on FEBA Members

ASSESSMENT JANUARY - DECEMBER 2022

Food Bank

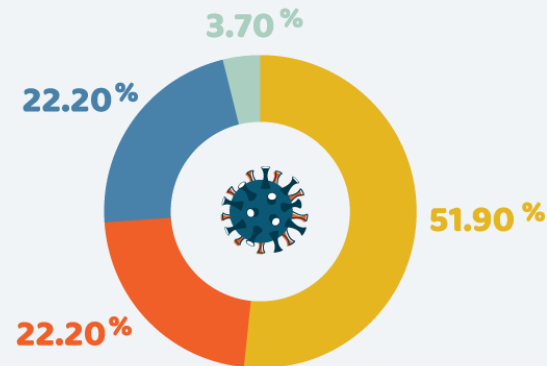




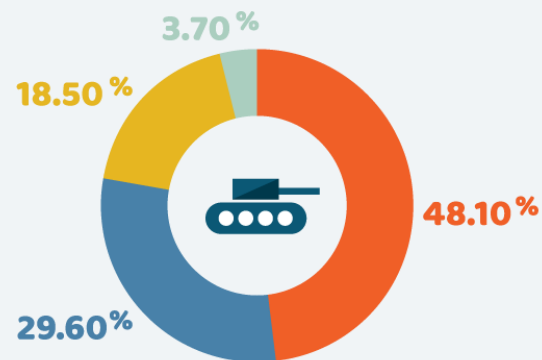
Impact of cost-of-living crisis on daily activities: a major concern for 88.9% of European Food Banks

Impact of external factors on Food Banks' operations

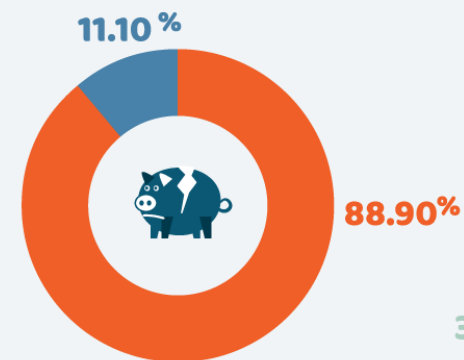
● High impact ● Medium impact ● Low impact ● No impact



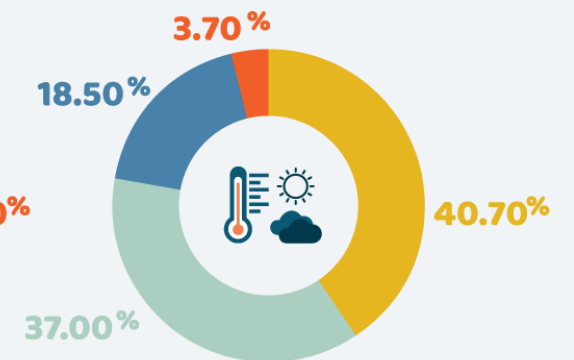
Covid-19



War in Ukraine



Cost-of-living crisis



Weather extremes



51.9%

European Food Banks are doing everything they can to source more food, but it is not enough to satisfy the raising demand from charities

of respondents (14 out of 27 FEBA Members) declare that the total quantity of surplus food recovered from the food supply chain increased.

However, 25.9% report that the volumes remained stable in comparison to 2021. **18.5%** indicate a **decrease**.



A new group at risk: gainfully employed persons who cannot make ends meet due to the ongoing pressures of the cost-of-living crisis

Compared to 2021,

81.5%

Food Banks note that from the requests of the charitable organisations they provided with food the socio-economic crisis led to an increase in end beneficiaries, varying across Europe between a small single-digit percentage and a doubling of the number.

51.9%

of the respondents notice a change regarding the employment status of the end beneficiaries compared to 2021.

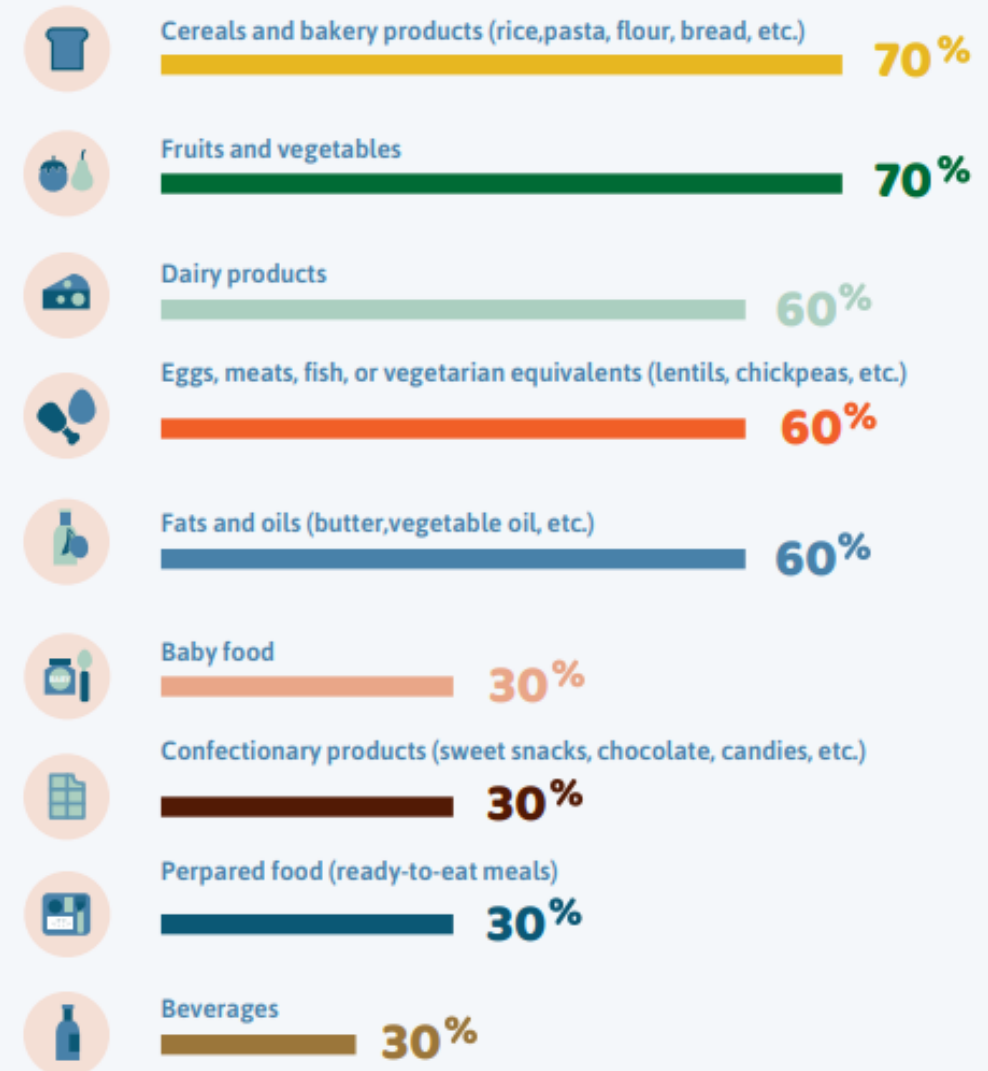


Looking at the figures, most food categories are among the key components of a nutritious diet.

This finding can be considered as potentially harming the ability of vulnerable groups to prepare and consume quality meals.

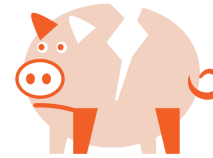


Fig. 6. Food categories with increased demand (% of respondents)



Follow-up assessment in September 2023

- In September 2023, the cost-of-living crisis still had a **considerable impact** on the ability of European Food Banks to
 - **cover the operating costs**, e.g., rent, electricity, salaries
 - **satisfy the food demand** from charities and end beneficiaries
- Compared to Q3 and Q4 2022, in Q3 and Q4 2023, the **gap between surplus food quantities and food demand increased** for the majority of FEBA Members
- Some Food Banks decided to **purchase (more) food** to bridge the gap



Identified opportunities

- ➔ Extended scope of surplus food sources
- ➔ Food processing and conservation

- ➔ Legislative opportunities
- ➔ New and improved partnerships



ARE EUROPEAN FOOD BANKS AT A CRITICAL CROSSROADS?

9 Working Sessions focussing on relevant topics

- Food recovery from the **primary sector**
- **New opportunities** for food donation, e.g. from cruise ships
- Partnering with **food manufacturers**
- Collaboration with **retailers**
- **Extending the shelf life** of products through processing etc.
- **Commercial competition** and alternative surplus food uses
- Charitable organisations and the added value of **social inclusion**
- **Policy and legislation** to foster food donation
- Opportunities and challenges of **food purchases**



Sharing of evidence-based information to transfer knowledge

Thank you!



Chaussée de Louvain 775
Brussels 1140, Belgium

+32 2 538 94 50

info@eurofoodbank.org

 @EuroFoodBanks

 @EuroFoodBanks

 eurofoodbanks

 European Food Banks Federation

 eurofoodbanks

 eurofoodbank.org