

The Food Loss and Waste Atlas

LOG IN TO FLW ATLAS

Username or email

Password

[Forgot Password?](#)

[Log in](#)

Richard Swannell
Rebecca Tay

Outline

Food Loss and Waste Atlas

- **Background**
- **Development Team**
- **FLW Atlas**
- **Benefits**
- **Opportunities**
- **Next steps**



1.3 billion tonnes food waste/year globally



Drivers



SUSTAINABLE DEVELOPMENT GOALS



1 NO POVERTY 	2 ZERO HUNGER 	3 GOOD HEALTH AND WELL-BEING 	4 QUALITY EDUCATION 	5 GENDER EQUALITY 	6 CLEAN WATER AND SANITATION
7 AFFORDABLE AND CLEAN ENERGY 	8 DECENT WORK AND ECONOMIC GROWTH 	9 INDUSTRY, INNOVATION AND INFRASTRUCTURE 	10 REDUCED INEQUALITIES 	11 SUSTAINABLE CITIES AND COMMUNITIES 	12 RESPONSIBLE CONSUMPTION AND PRODUCTION
13 CLIMATE ACTION 	14 LIFE BELOW WATER 	15 LIFE ON LAND 	16 PEACE, JUSTICE AND STRONG INSTITUTIONS 	17 PARTNERSHIPS FOR THE GOALS 	



WORLD
RESOURCES
INSTITUTE

Drivers



WORLD
RESOURCES
INSTITUTE

Development Team



- **Idea Developed with: UN Environment, FAO, WBCSD, CGF and EU-Refresh**
- **Project Team: WRAP, WRI and PredictX**
- **Funded by: Walmart Foundation, WRI and WRAP**



WORLD
RESOURCES
INSTITUTE



The Food Waste Atlas

Tracking the world's food loss and waste from farm to fork



FLW DATABASE
Finding food loss and waste data by location, food category, and stage in supply chain

[SUBMIT FLW DATA](#)

[SEARCH DATA](#)

INVENTORY DATA
Tracking food waste and loss by country and company

[SUBMIT INVENTORY](#)

[SEARCH INVENTORY](#)





Search food loss and waste data
Type something you need to find

Results showing
1422

Apples

Time ▾ Age ▾ A-Z ▾

- Newest first
- Oldest first
- Relevance

Apples and Products
2017

Supply chain stage
Harvesting in Field

Location
Afghanistan

Apples and Products
2017

Supply chain stage
Harvesting in Field

Location
Afghanistan

Apples and Products
2017

Supply chain stage
Harvesting in Field

Location
Afghanistan

Apples and Products
2017

Supply chain stage
Harvesting in Field

Location
Afghanistan



Afghanistan, 2008

Apples and products [2617]

[← Back to search](#)

Stage of supply chain



Harvesting in Field

Amount



1967 - 2013
3,000 Tonnes



Source type



FAO: Food Balance Sheets

Source

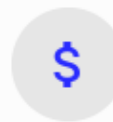


<http://www.fao.org/faostat/en/#data/FBS>

Location



Cost of food waste



\$1,234,567,890

Disposal or recycle route



5,700 Tonnes donated

Year



1967 - 2013

Notes



Some text



Submit Inventory Data

Entity Name ⓘ

Time Frame to Time Frame ⓘ


Material type ⓘ

Boundary

Food categories ⓘ

Next

Year



2015

Location



Household

Edible 5.7 Mt	Inedible Food Waste 1.3 Mt
Total 7 Mt	


Destination	
AD or composting 1.2 Mt	Thermal and landspreading 2.3 Mt
Landfill 3.5 Mt	Total 7 Mt

Hospitality and Food Service


Edible 0.7 Mt	Inedible Food Waste 0.2 Mt
Total 0.9 Mt	

Destination	
AD or composting 0.1 Mt	Thermal and landspreading 0.2 Mt
Landfill 0.6 Mt	Total 0.9 Mt


Total FLW - UK



Edible FLW
7.6 Mt



Inedible Food Waste
2.4 Mt



Total FLW
10 Mt


Retail and whole sale

Edible 0.3 Mt	Inedible Food Waste 0 Mt
Total 0.3 Mt	

Manufacturing

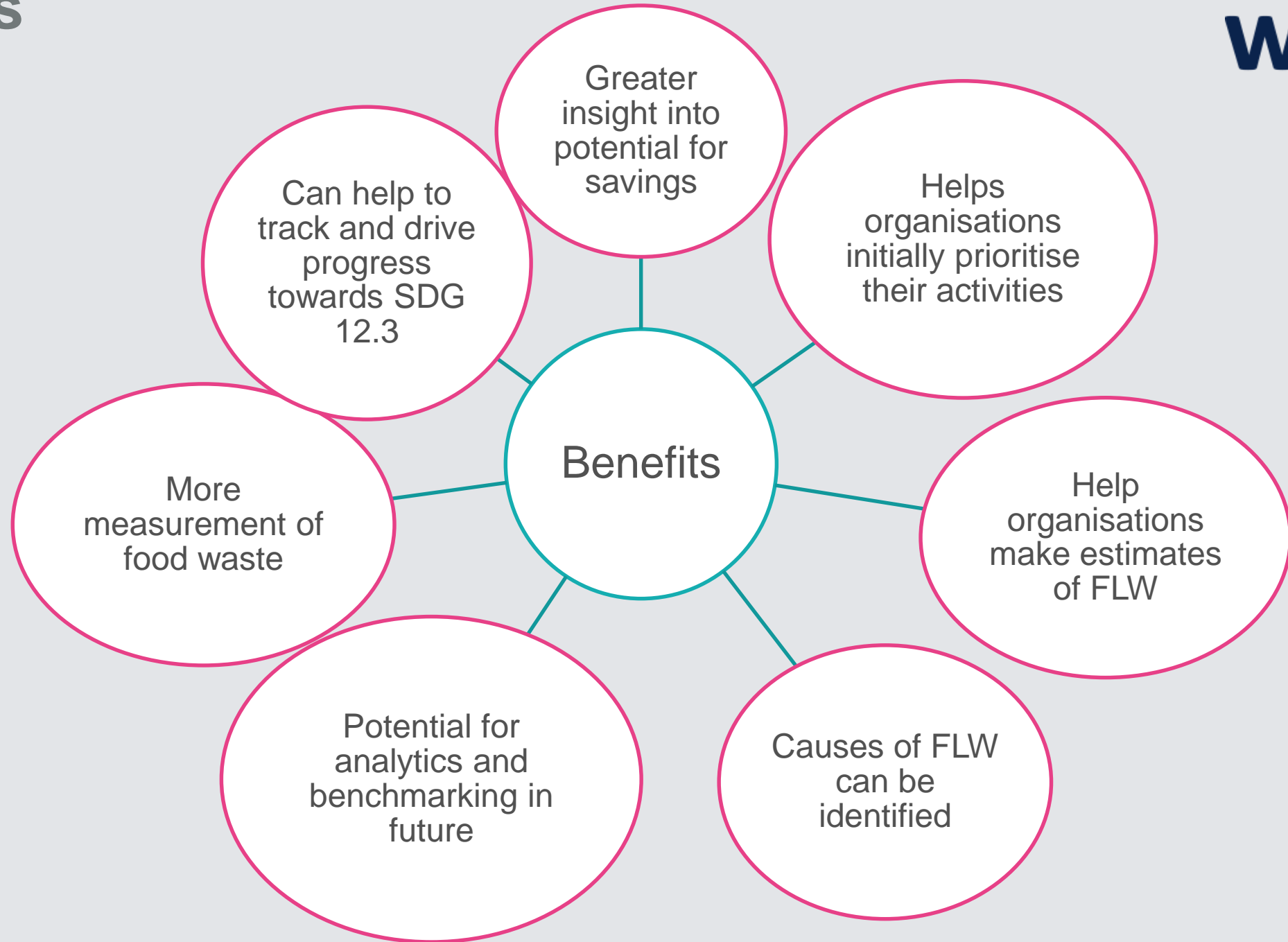
Edible 0.9 Mt	Inedible Food Waste 0.8 Mt
Total 1.7 Mt	

Total Destination - UK



AD or composting
1.95 Mt

Benefits



Opportunities



- Integrate European data
- Encourage organisational reporting
- Link to Development Funds ?

Next Steps



- Developed concept and consulted widely
- Discovery Phase complete and moving into build phase
- Aim to launch in early summer



UNITE IN THE
#FOODWASTEFIGHT