



African swine fever in Poland – update

AHW.A.03



SCPAFF 16-17 December 2024

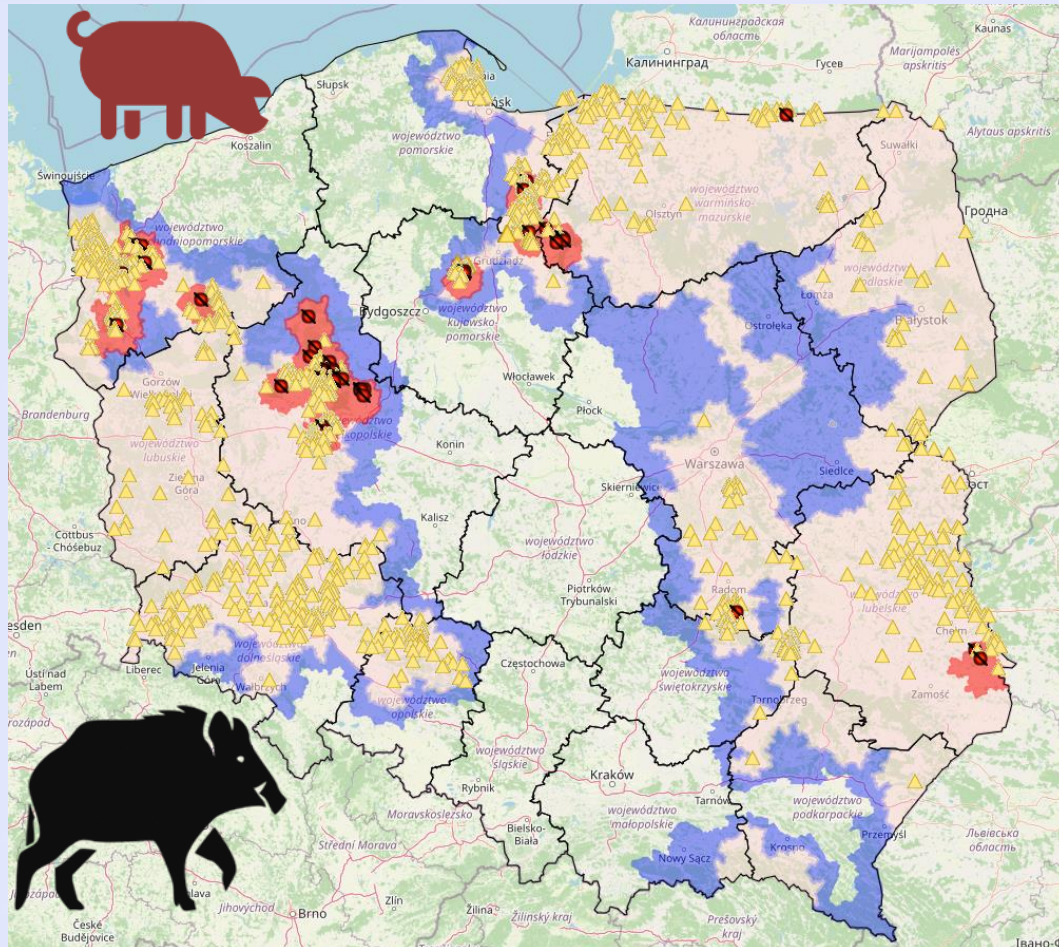


No outbreaks since last PAFF

44 outbreaks in pigs
in total

ASF outbreaks in wild boars

13.12.2024



- ▲ ASF outbreak in WB
- ASF outbreak in DP

CIR 2024/2928 of 20 th
November 2024

2024 outbreaks in WB

Voivodeship	No. of ASF outbreaks in WB
dolnośląskie	210
kujawsko-pomorskie	59
lubelskie	121
lubuskie	67
mazowieckie	79
opolskie	76
podkarpackie	3
podlaskie	46
pomorskie	394
świętokrzyskie	151
warmińsko-mazurskie	173
wielkopolskie	332
zachodniopomorskie	333
In total	2044

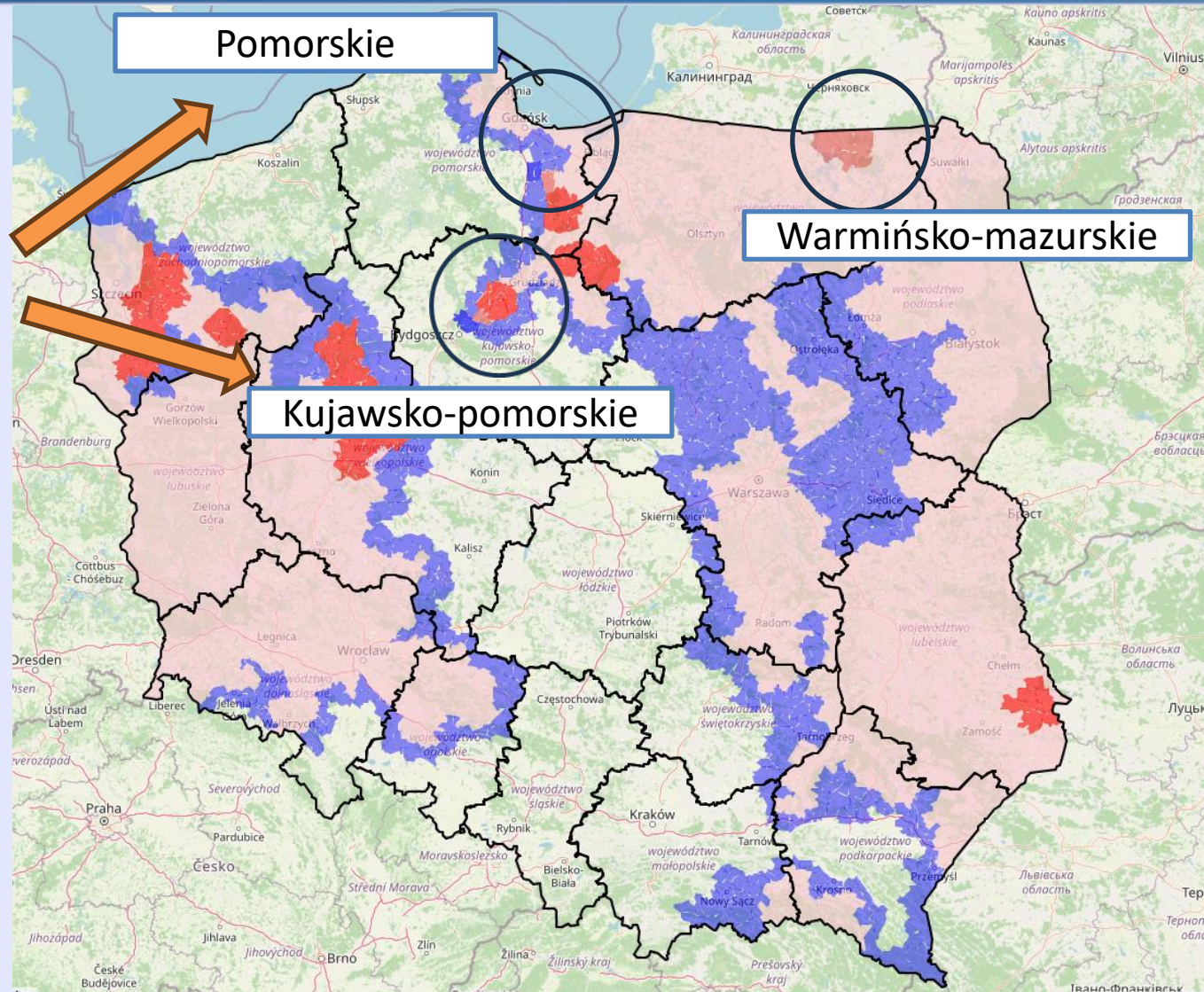
Animals' description	No. of animals
Found dead	2229
Shot	716
Killed in traffic	21
Euthanasia	21

Amendments of RZ's

CIR 2024/2928 of 20 th November 2024



ASF outbreak in WB in RZ III in close to proximity RZ I



Reversion of RZ III =>RZ II

New amendments



ASF outbreak in WB in RZ II in close to proximity RZ I

Pomorskie

Reversion of RZ III => RZ II

Kujawsko-pomorskie

Mazowieckie

Reversion of RZ II => RZ I and RZ I => free

ASF outbreaks in WB in RZ I

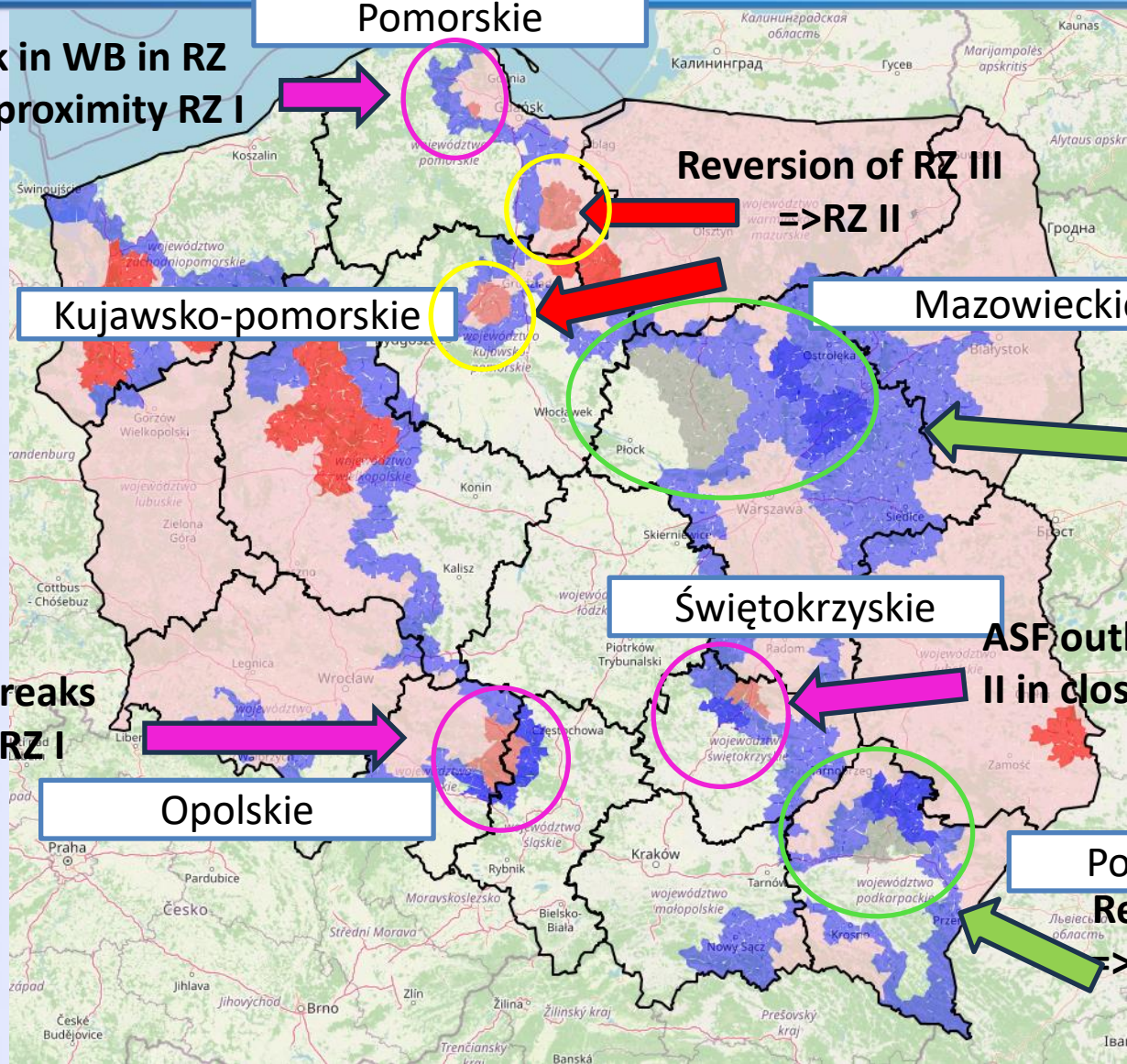
Opolskie

Świętokrzyskie

ASF outbreaks in WB in RZ II in close to proximity RZ I

Podkarpackie

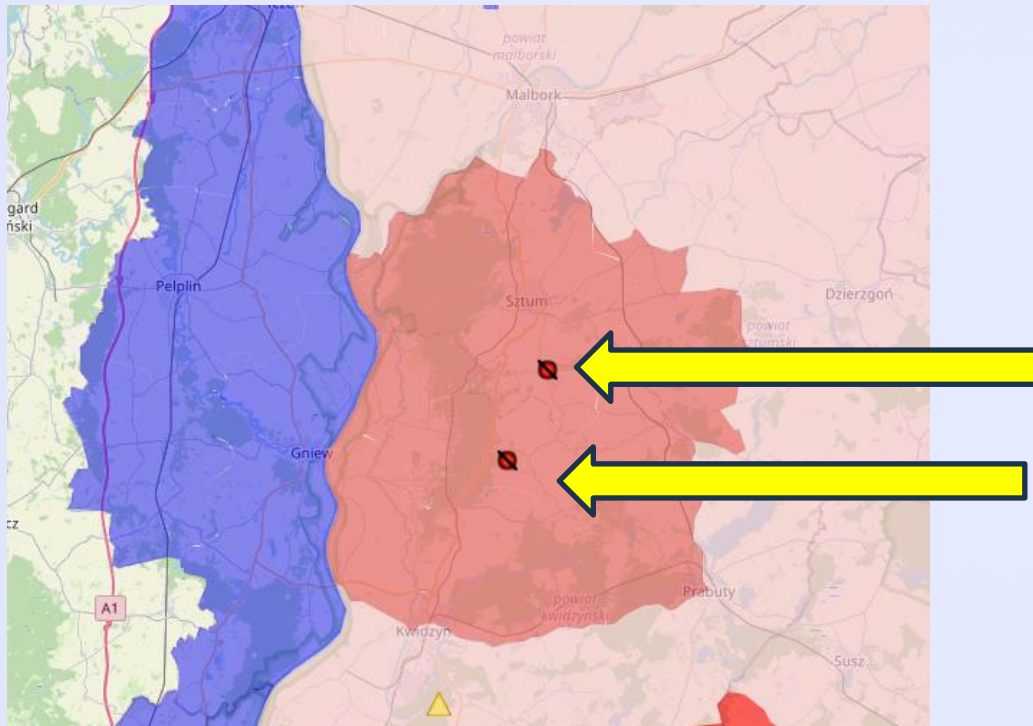
Reversion of RZ II => RZ I and RZ I => free



Reversion of RZ III => RZ II



Pomorskie region- sztumski i kwidzyński district



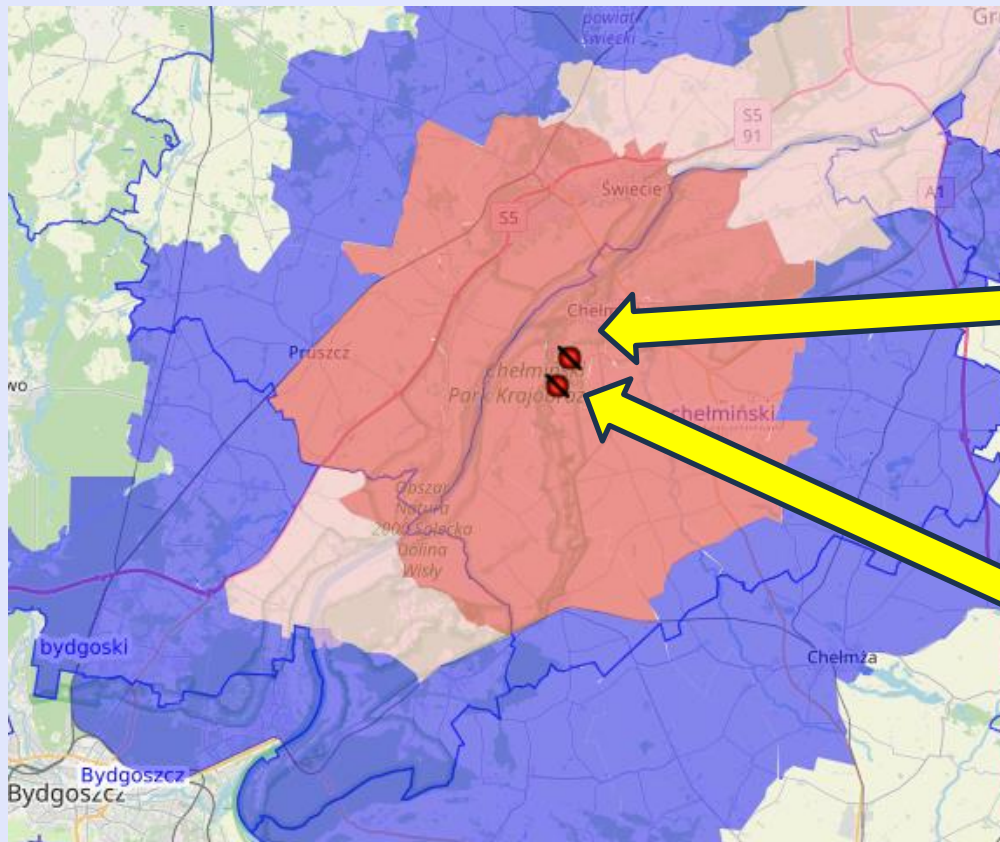
Outbreak in pigs in 2024
19.08.2024

Outbreak in pigs in 2024
23.07.2024

Reversion of RZ III => RZ II



Kujawsko-pomorskie region- chełmiński and świecki district



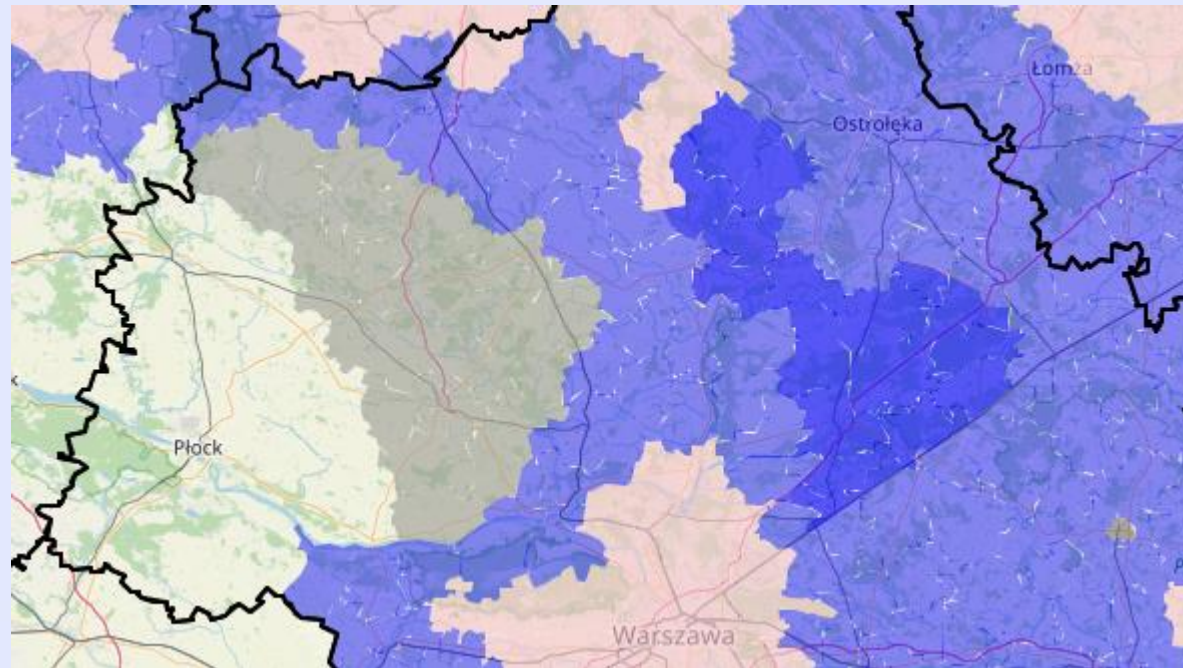
Outbreak in pigs in 2024
09.08.2024

Outbreak in pigs in 2024
12.08.2024

Reversion of RZ II =>RZI and RZ I =>free zone



Mazowieckie region



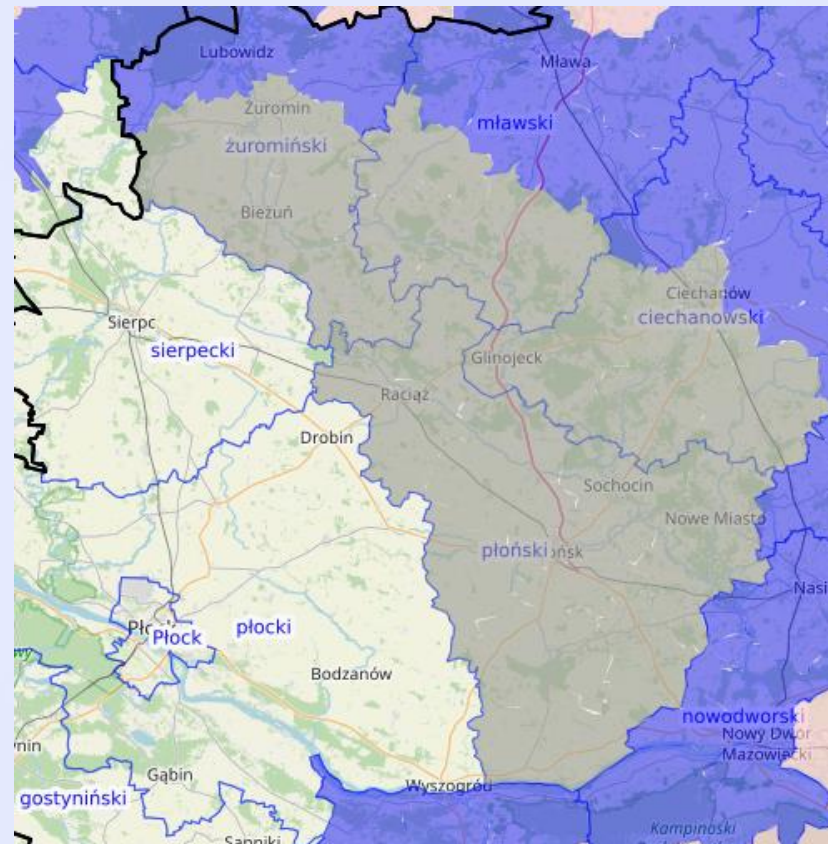
Reversion of RZ I => free zone



Mazowieckie region

żuromiński,
mławski,
ciechanowski,
płoński districts

**No outbreaks in WB in
2021- 2024**



Reversion of RZ II =>RZ I



Mazowieckie region

Districts:

makowski- last

confirmed on 28.08.2023,

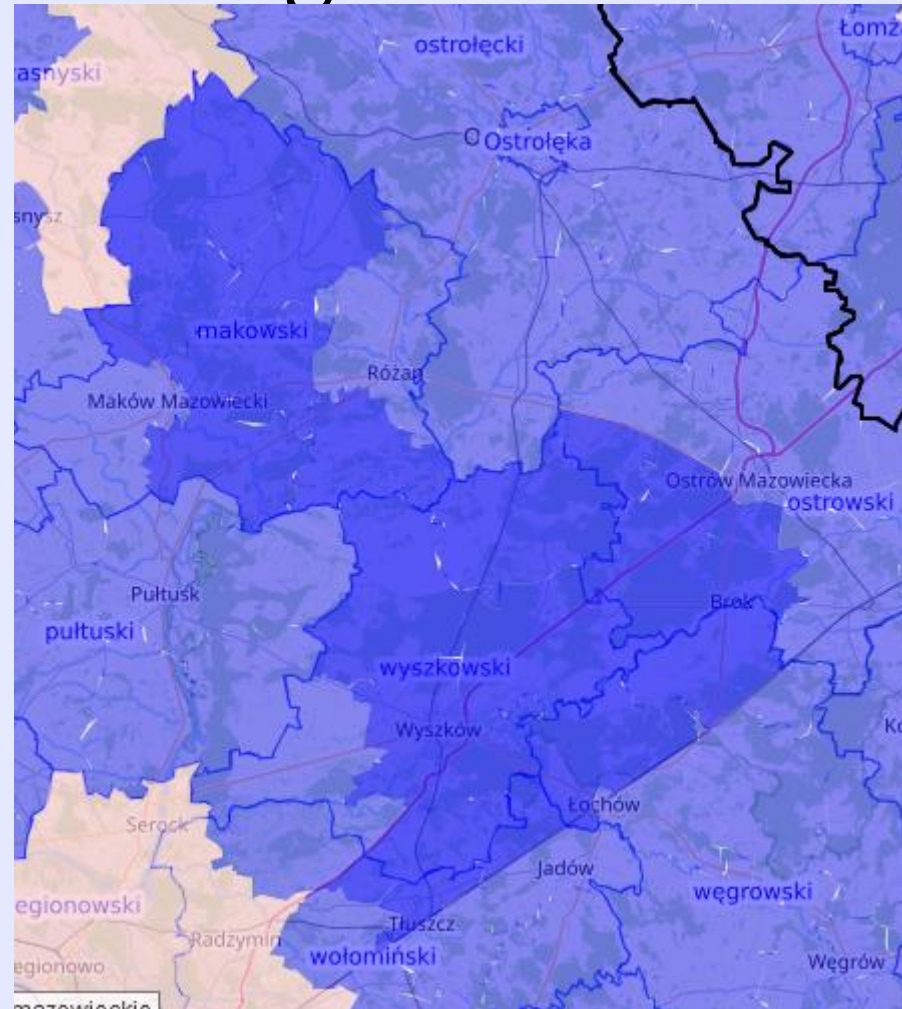
ostrowski-last confirmed
11.04.2023,

wyszkowski- last

confirmed 12.09.2023,

wołomiński-last

confirmed 07.06.2023



Reversion of RZ II =>RZ I and RZ I => free zone



Podkarpackie region

Districts:

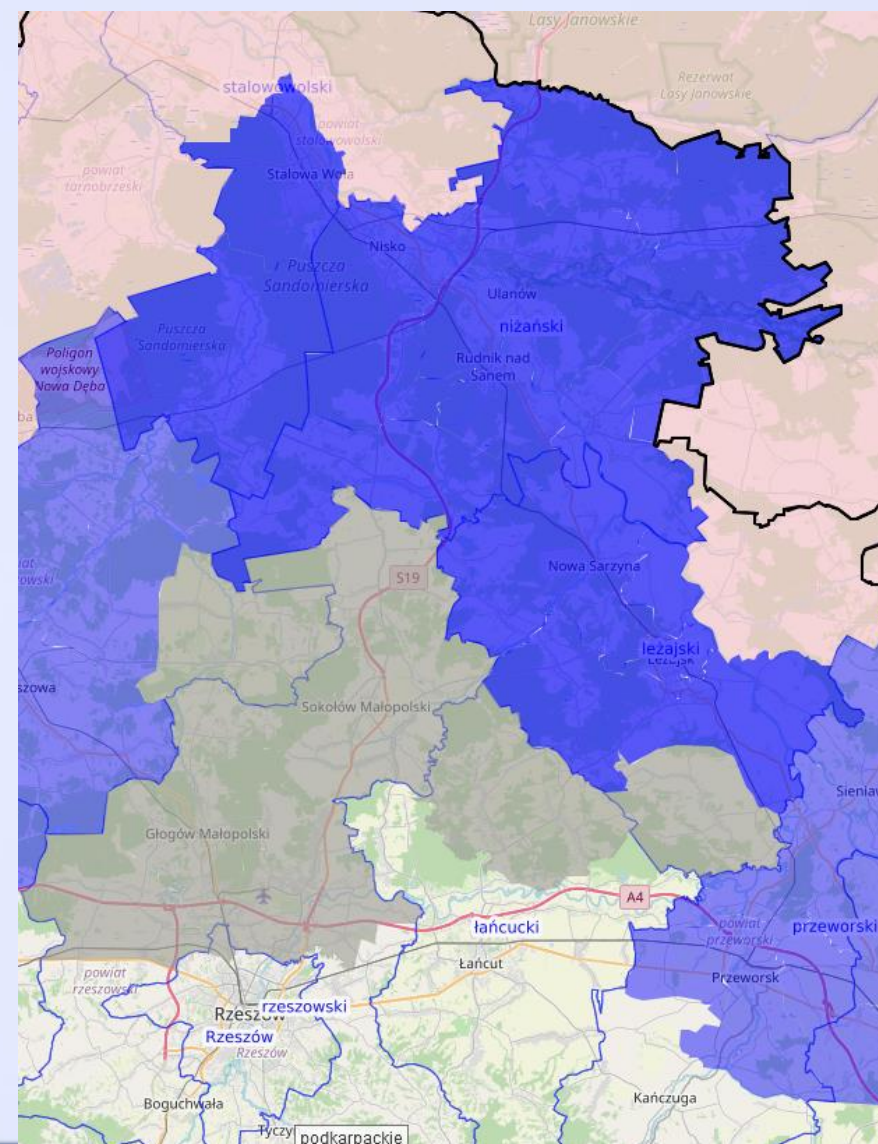
No outbreaks in WB in 2021-
2024 : kolbuszowski, łańcucki,
rzeszowski, stalowowolski;

leżajski- last confirmed

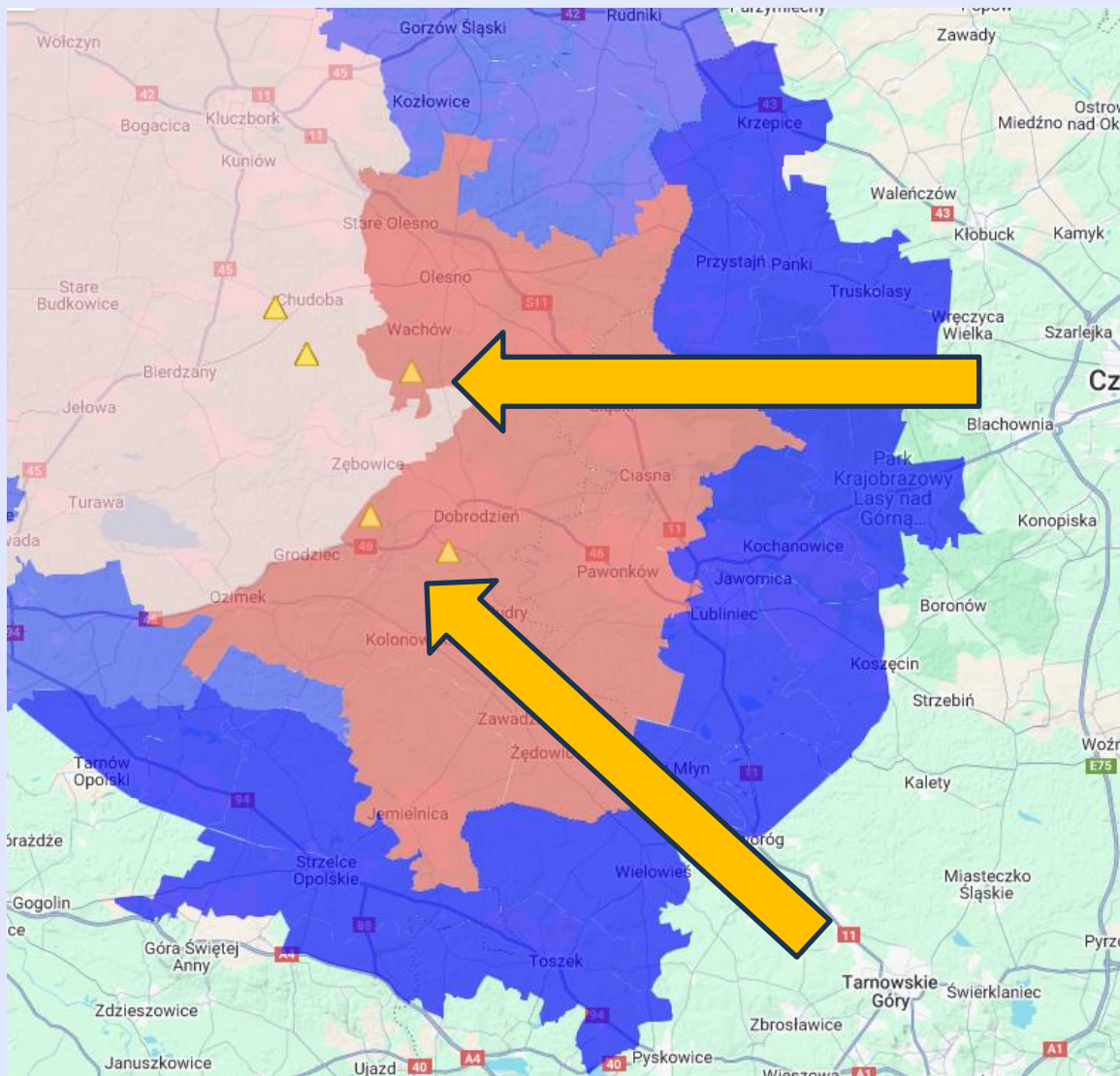
10.10.2023,

nizański- last confirmed

15.10.2021,

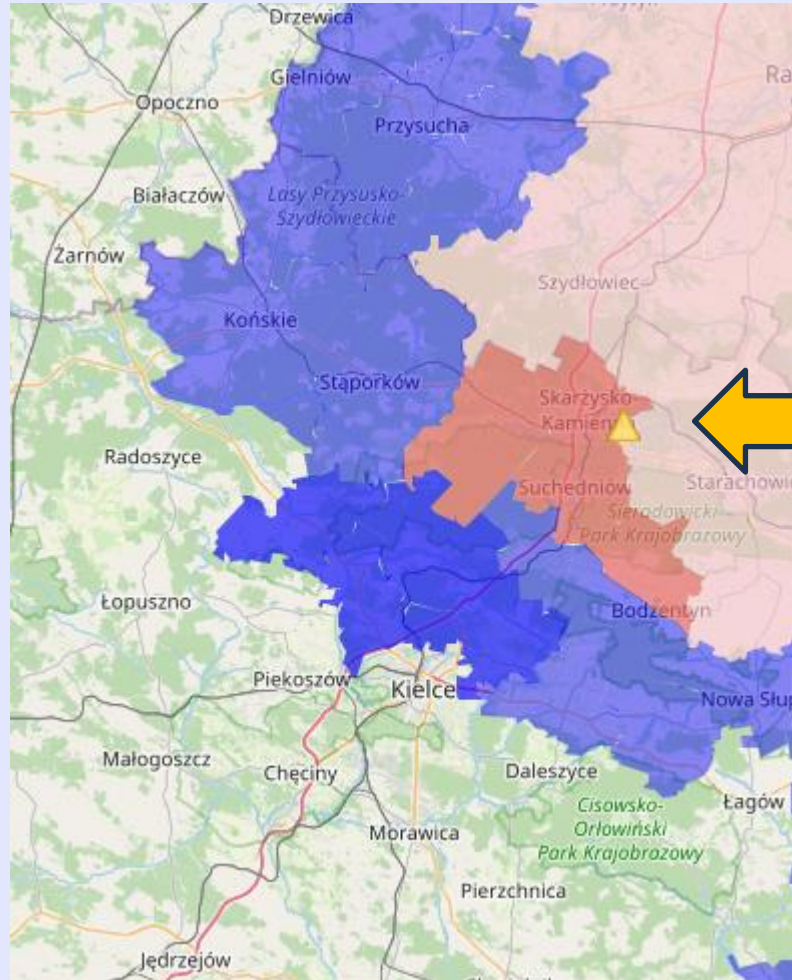


Opolskie region



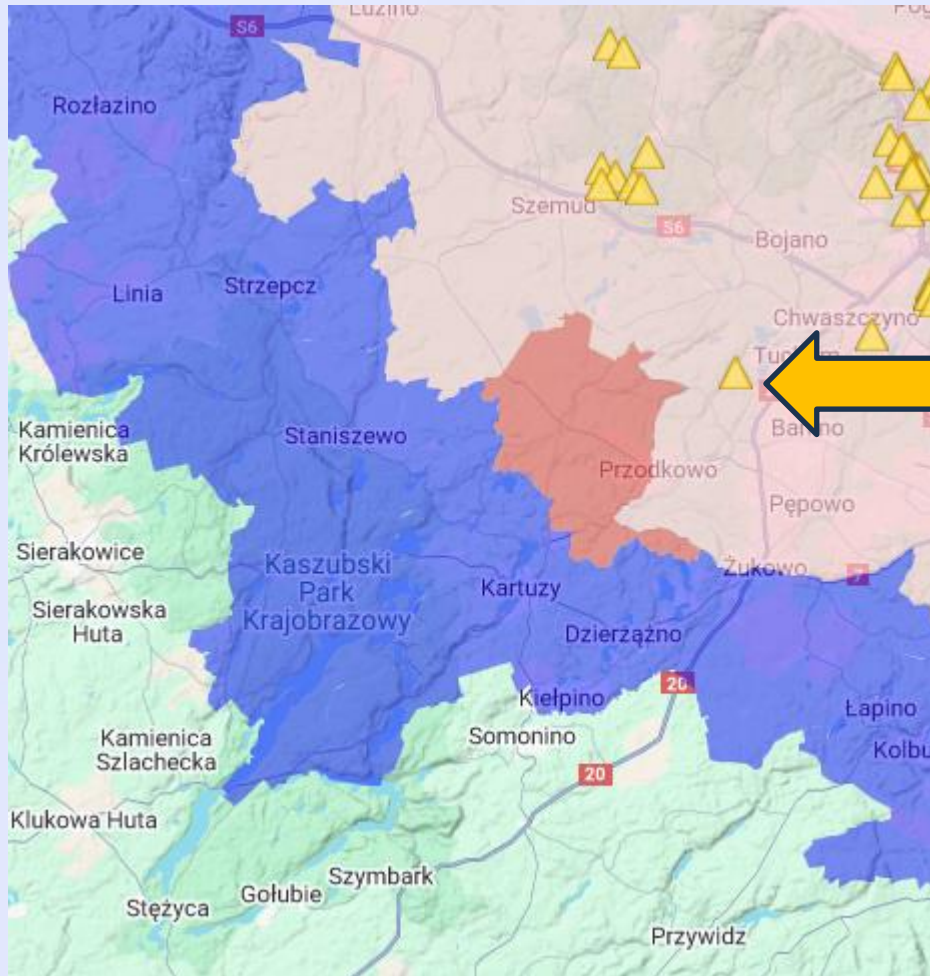
ASF outbreak in WB in RZ I

Świętokrzyskie region

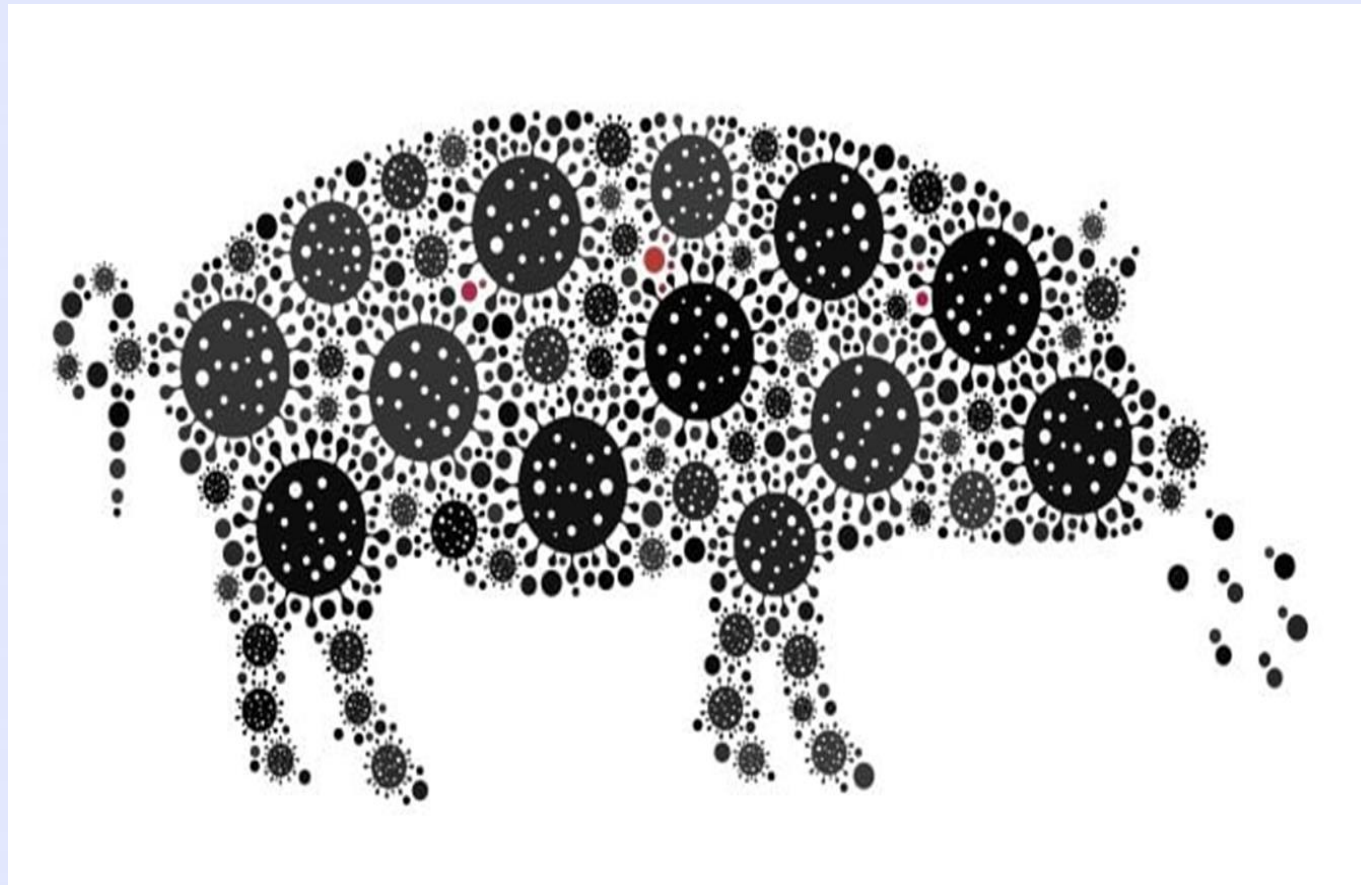


ASF outbreak in WB in RZ II in
close to proximity RZ I

Pomorskie region



ASF outbreak in WB in RZ II in close to proximity RZ I



Thank you