



# ASF update and wild boar management

Estonian Agriculture and Food Board  
14.03.2022 PAFF meeting



# ASF situation update (1)

## Domestic pigs

Year	Total number of domestic pigs tested	No of dead domestic pigs tested (passive surveillance)	No of ASF positive pigs	No of ASF outbreaks
2021	5799	3054	2	1
2022	610	476	0	0



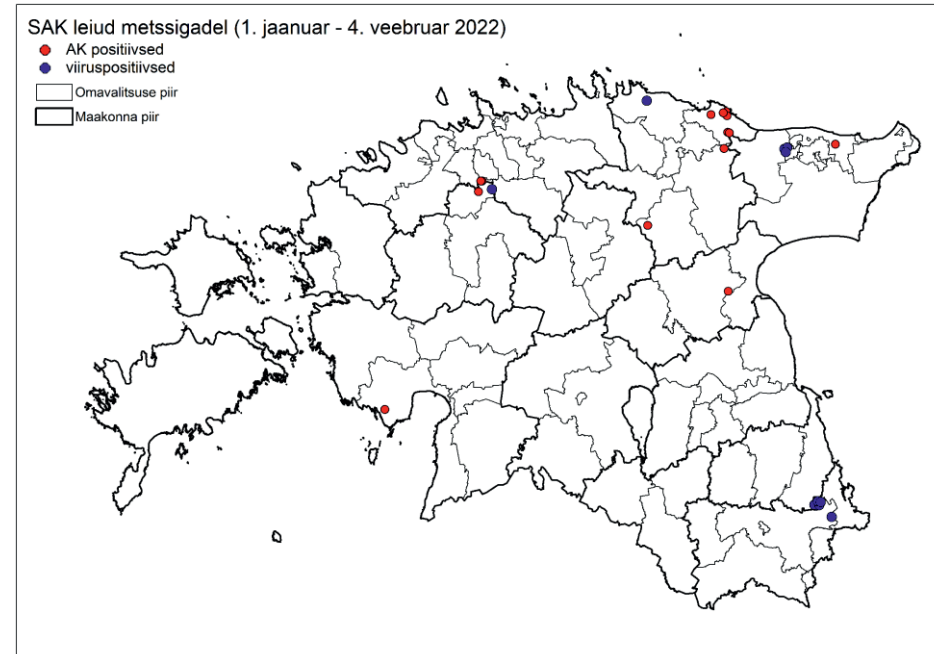
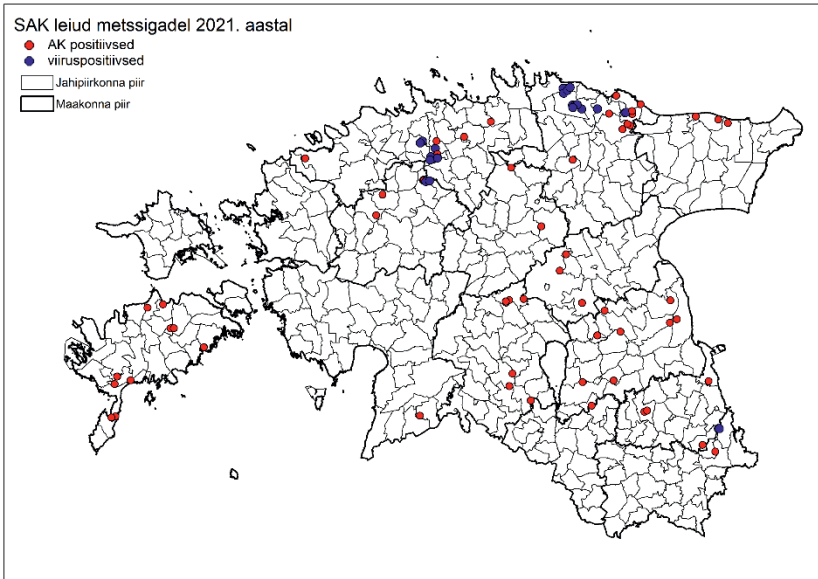
# ASF situation update (2)

## Wild boars

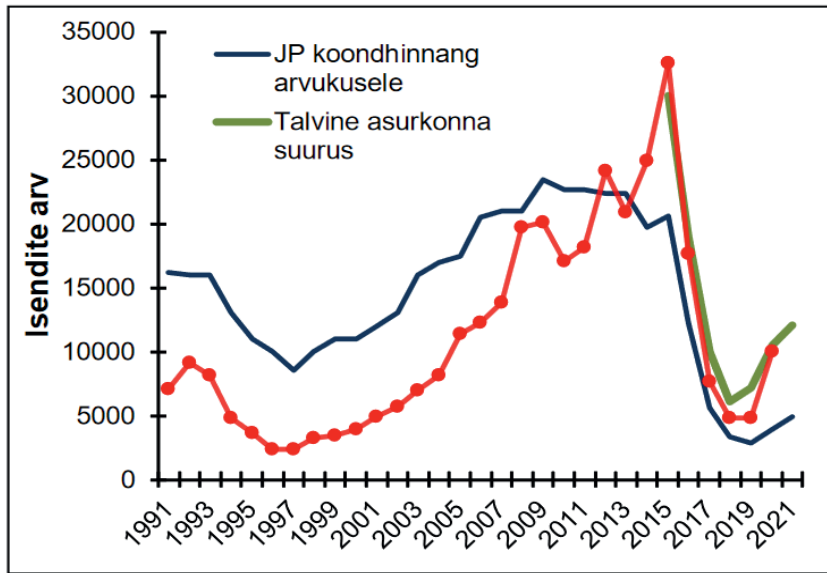
	2014		2015		2016		2017		2018		2019		2020		2021		2022	
	No of animals tested	No ASF positive/ Prevalence	No of animals tested	No ASF positive/ Prevalence	No of animals tested	No ASF positive/ Prevalence	No of animals tested	No ASF positive/ Prevalence	No of animals tested	No ASF positive/ Prevalence	No of animals tested	No ASF positive/ Prevalence	No of animals tested	No ASF positive/ Prevalence	No of animals tested	No ASF positive/ Prevalence	No of animals tested	No ASF positive/ Prevalence
Hunted wild boars	879	9 (1%)	8617	680 (8%)	14976	749 (5%)	9161	565 (6,2%)	4879	565 (6,2%)	4773	82 (1,72%)	7252	63 (0,87%)	10629	62 (0,6%)	4079	26 (0,64%)
Found dead wild boars	175	64 (37%)	928	408 (44%)	987	818 (83%)	372	299 (80,4%)	52	299 (80,4%)	26	2 (7.6%)	30	13 (43,3%)	70	21 (30%)	8	6 (75%)
Culled/car accident	2	0	17	7 (41%) 1095 (11,5%)	15	5 (33)	41	3 (7,3%)	41	3 (7,3%)	37	0	45	0	53	0	4	3 (75%)
<b>Total</b>	<b>1056</b>	<b>73 (7%)</b>	<b>9562</b>	<b>(11,5%)</b>	<b>15978</b>	<b>1572 (10%)</b>	<b>9574</b>	<b>867 (9,1)</b>	<b>9574</b>	<b>867 (9,1%)</b>	<b>4836</b>	<b>84 (1,74%)</b>	<b>7327</b>	<b>77 (1,05%)</b>	<b>10 752</b>	<b>83 (0,77%)</b>	<b>4091</b>	<b>35 (0,86%)</b>

# ASF situation update (3)

## Wild boars



# Wild boar population 2021 (1)

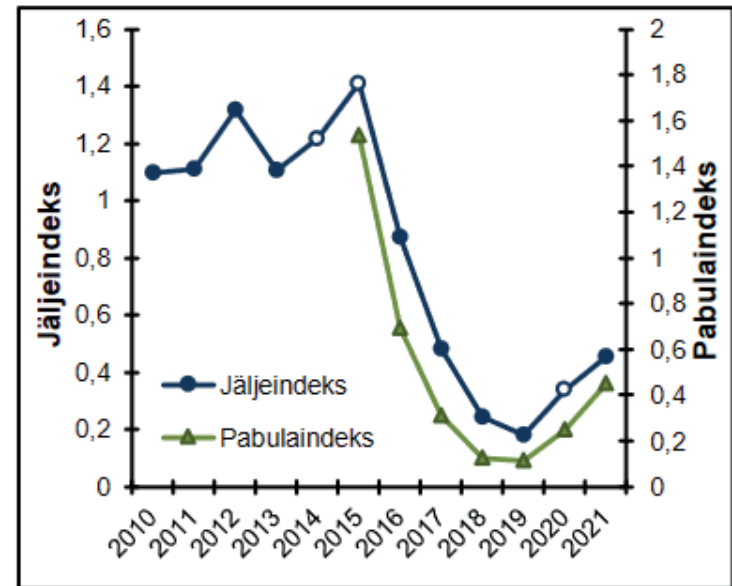


green line – wintering population size estimated by Estonian Environment Agency;

Agency;

blue line – based on estimates given by the users of hunting districts

red line – number of hunted wild boars



blue line - winter track index - tracks per 1 km per 24 hours

green line - pellet index– n of excrements per 1 km of transects

# Wild boar population 2021 (2)

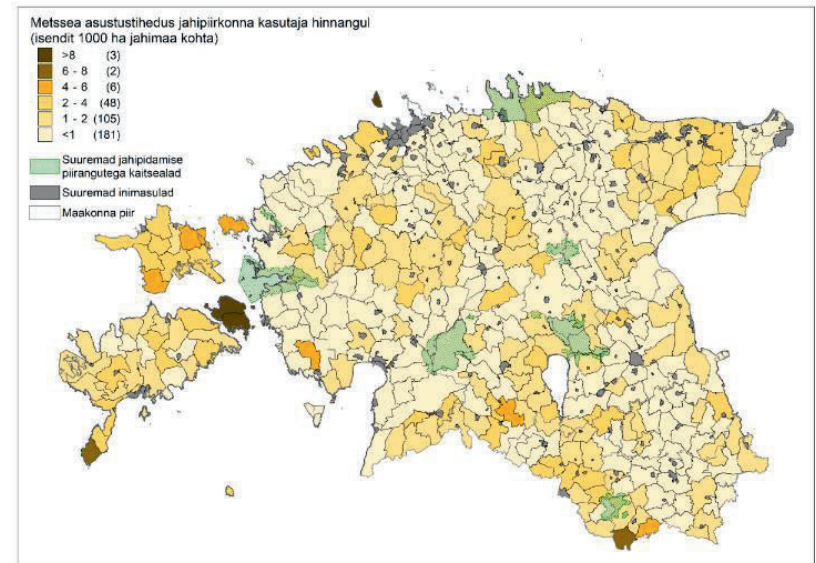
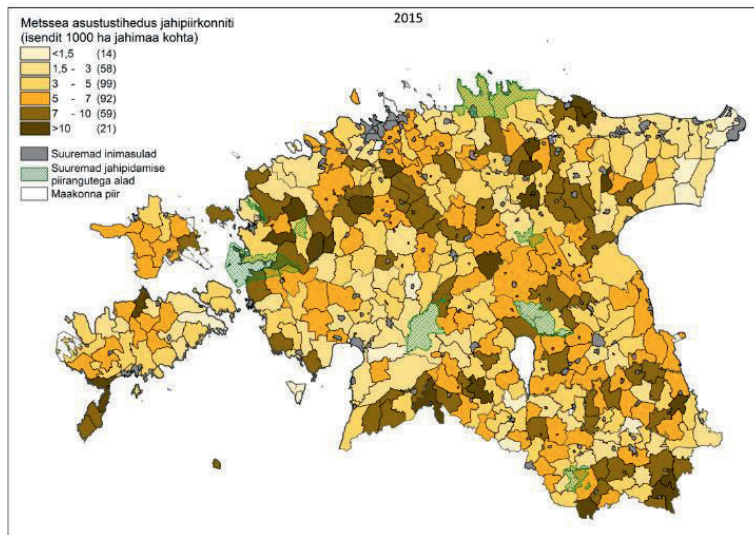
Hunters estimated wild boar population size (in winter, post harvest) in 2012-2021

Maakond <i>County</i>	Jahimeeste hinnang arvukusele (n) <i>Hunter estimated population size (n)</i>										2021/2020 muutus (%)	2021/2012 muutus (%)
	2012	2013	2014	2015	2016	2017	2018	2019	2020	2021	<i>Change in hunters estimation (%)</i>	<i>Change in hunters estimation (%)</i>
Harjumaa	2020	2110	1670	1740	1030	450	290	200	280	380	35,7	-81,2
Hiiumaa	680	660	560	580	600	270	290	340	290	350	20,7	-48,5
Ida-Virumaa	1110	780	770	820	650	400	340	300	370	410	10,8	-63,1
Jõgevamaa	1420	1540	1240	1300	580	70	90	70	160	230	43,8	-83,8
Järvamaa	1400	1380	1270	1250	460	110	160	120	210	260	23,8	-81,4
Läänemaa	1180	1430	1310	1480	1380	950	150	90	120	210	75,0	-82,2
Lääne-Virumaa	1790	1900	1910	2070	980	260	130	130	270	230	-14,8	-87,2
Põlvamaa	1460	1540	1160	1180	310	120	120	130	160	210	31,3	-85,6
Pärnumaa	2410	1930	1500	1780	1160	620	270	250	320	440	37,5	-81,7
Raplamaa	1760	1930	1760	1810	1560	480	270	240	300	361	20,3	-79,5
Saaremaa	1280	1260	1150	1290	2100	1240	490	290	440	660	50,0	-48,4
Tartumaa	1360	1500	1300	1380	570	250	280	190	250	260	4,0	-80,9
Valgamaa	1020	1020	1030	850	160	100	120	150	240	300	25,0	-70,6
Viljandimaa	2270	2310	1750	1780	360	140	180	220	250	370	48,0	-83,7
Võrumaa	1160	1080	1330	1300	320	160	190	150	230	270	17,4	-76,7
<b>Kokku Total</b>	<b>22320</b>	<b>22370</b>	<b>19710</b>	<b>20600</b>	<b>12220</b>	<b>5620</b>	<b>3370</b>	<b>2870</b>	<b>3890</b>	<b>4940</b>	<b>27,0</b>	<b>-77,9</b>

# Wild boar population 2021 (3)

Density of wild boar in spring 2015 by hunters estimations

Density of wild boar in spring 2021 by hunters estimations



# Long-term wild boar management (1) Surveillance

## Passive surveillance

- All found dead/culled wild boars tested with PCR

## Active surveillance

- All hunted wild boars in Zone II for PCR and ELISA/IPT
- 50% of the wild boars hunted in Zone I and the ones intended to be taken outside the zone



# Long-term wild boar management (2)

## Selective female hunting

- Selective hunting is implemented- hunters focus on shooting adult and sub-adult females. From all hunted adult and sub-adult wild boars – at least 50% have to be female and 50% sub-adults (in Zone I 55%)

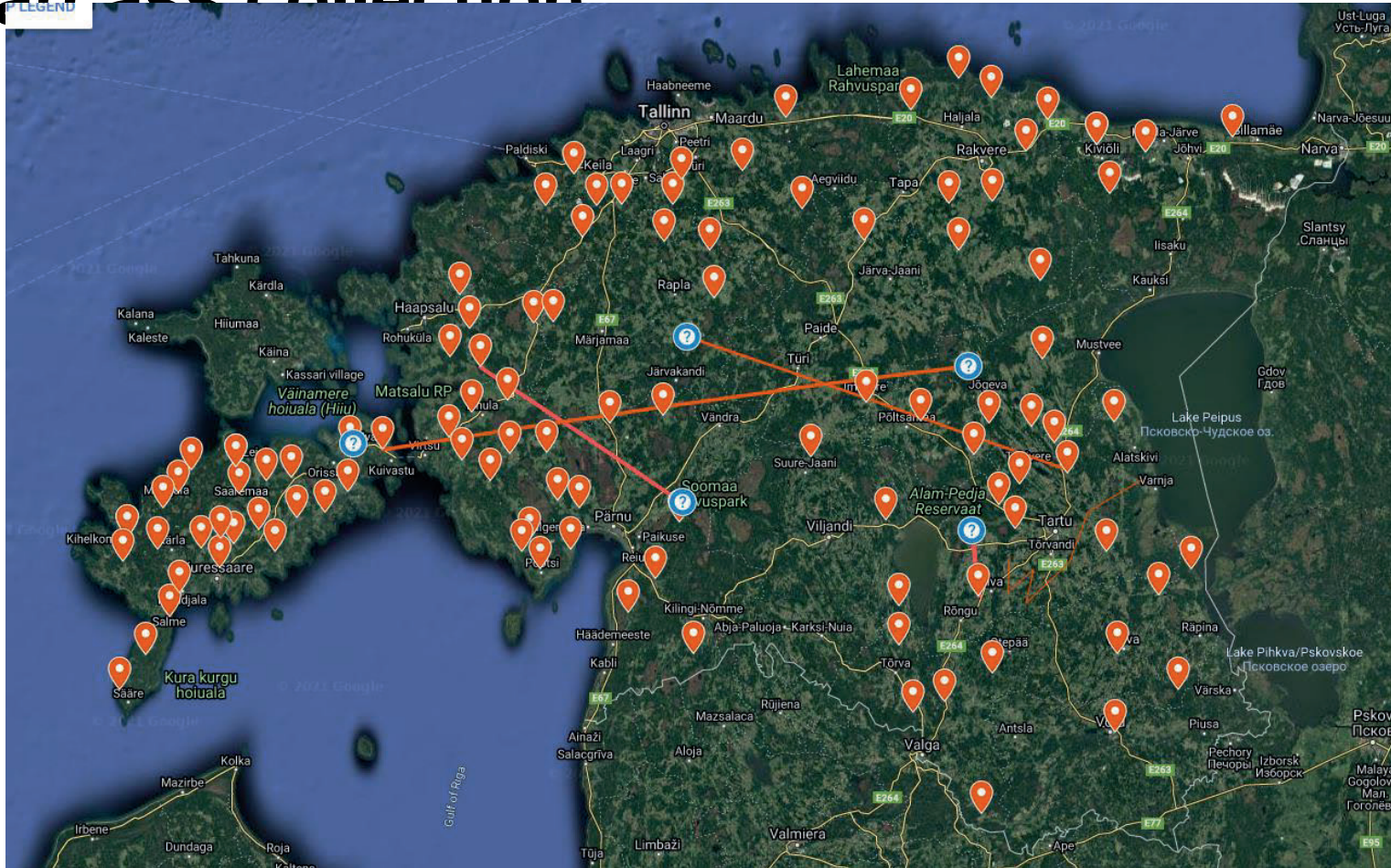
# Long-term wild boar management

(3)

## Carcass collection

- Processing of hunted wild boar carcasses is prohibited before the results from the lab are received
- Containers distributed for the collection of ASF related carcasses by the state authorities
- Marked and locked, capacity 660 L
- Full container is changed with empty container (information to the Vireen AS (rendering plant) from representative of the hunters' society in that region). Full container is taken to Vireen AS
- Wild boars which are found dead are buried in the finding place or taken into containers

# Long-term wild boar management (4) Carcass collection



# Long-term wild boar management (5)

## Additional feeding

- August 2015 supplementary feeding of wild boar banned (baiting is still allowed 5 kg maximum on the ground and 100 kg in the feeder)
- In one feeding place max 100 kg feed per month
- Distance between 2 feeding places must be at least 1 km
- Max 1 feeding place per 1000 ha hunting ground
- Since October 2016 supplementary feeding allowed only in registered feeding place

# Long-term wild boar management (6)

## Hunting management/Biosecurity

- When hunting, it must be taken into account that each hunted and dead hunted wild boar is a risk of ASF infection, and it is therefore very important to ensure biosecurity at every step
- The carcasses of hunted wild boars must be transported so that they do not come into contact with each other
- It is prohibited to remove skin or cut the wild boar into pieces before it has been tested for ASF
- Cleaning and disinfection of equipment, clothes, foot wear, vehicles etc right after hunting

# Long-term wild boar management (7)

## Hunting management/Biosecurity

- Carcasses must be kept/stored separately, each carcass must be identifiable



# Long-term wild boar management (8)

## Hunting management

- Hog traps are allowed to be used only for shooting wild boar for the control of the spread of African swine fever in the cases determined by the Environmental Board.
- A wild boar that shows obvious signs of African swine fever may be killed without a hunting permit.
- A veterinarian or supervisory official must be promptly notified of killing a wild boar showing the signs of African swine fever. If there was no hunting permit for killing the wild boar showing the signs of African swine fever, the Environmental Board shall also be promptly notified of the killing

# Long-term wild boar management (9)

## Hunting management

- Driven hunt for wild boar allowed year round
- Shooting of wild boar from vehicles allowed
- Use of artificial light allowed for wild boar hunting
- 50% of the hunted wild boars must be piglets
  
- Hunting bag for hunting season 2021/2022 is 14 022 wild boars
- **Final goal: less than 1 wild boar per 1000 hunting ground!**



# Long-term wild boar management (10) Hunting management

Contract with Estonian Hunters` Society:

- Selective hunting
- Sampling
- Carcass removal
- Notification

# Long-term wild boar management (11)



## EESTI JAHIMEESTE SELTS

SELTSIST
TEGEVUS
SEADUSED JA DOKUMENDID
JAHIMEHELE
UUDISED

Aktuaalne • Üleskutse metssigade kütamise jätkamiseks

AKTUAALNE | ERISREED | SIGADE KÄTK

## Üleskutse metssigade kütamise jätkamiseks

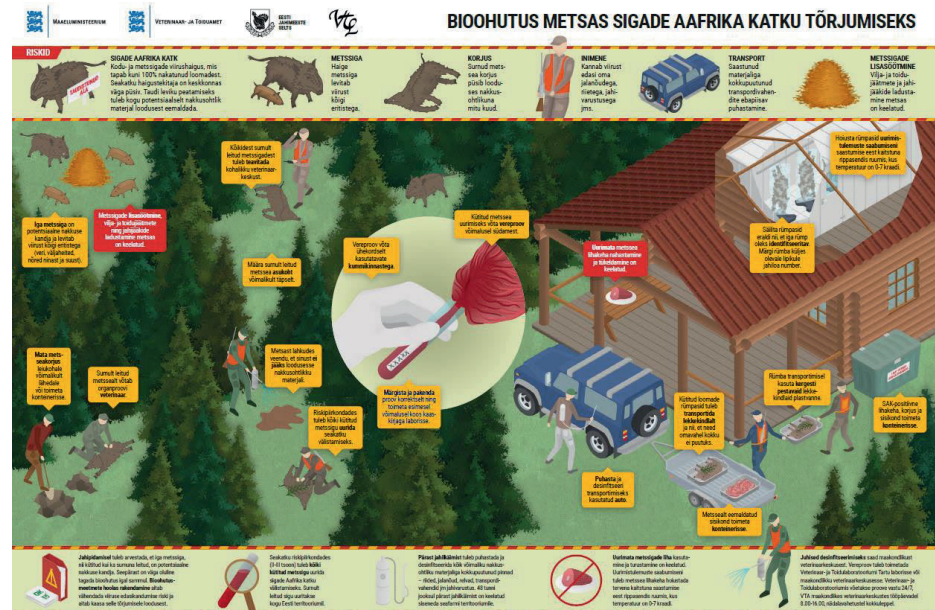
märts 4, 2022 414



Foto: Pixabay

Sigade Aafrika katk (SAK) jõudis Eestisse 2014. aastal. Üle seitsme aasta on nii seapidajad, jahimehed kui ka riik ühiselt pingutanud, et pirata haiguse levikut metssigade populatsioonis ning takistada selle levikut seafarmidesse.

Vahepeal võis tunduda, et oleme viiruse leviku seljatanud või siis vähemalt tugevalt piiranud



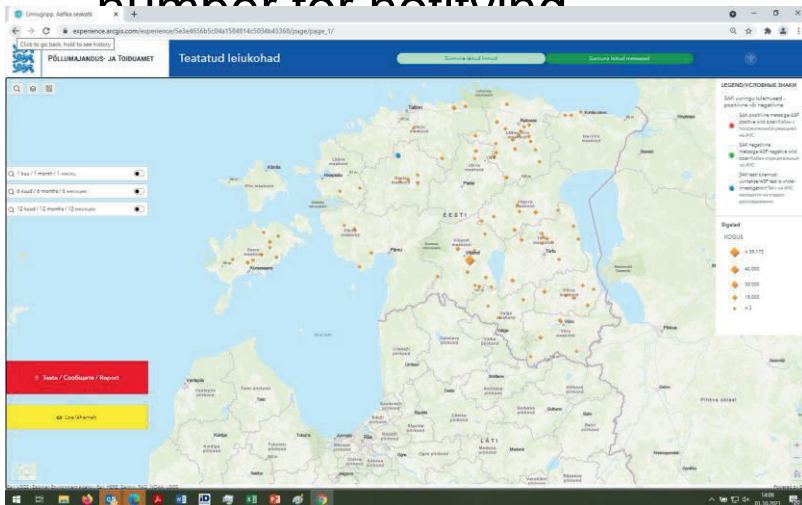
# Internet application for notification

Launched on 30.09.2021

Allows hunters and public to  
notify about finding dead wild  
boar

Accessible via mobile phone, pc  
or tablet

In addition a separate phone  
number for notifying



Surumud metssigade arv/Number of the dead wild boar(s)/Количество погибших кабанов\*

-Please Select-

Leidja/Finder/Нашедший труп кабана

Jähtimata/Hunter /Охотник  Muu/Other /Другое

Metsesa korjuse olukord/Condition of the dead wild boar/Состояние мертвого кабана\*

-Please Select-

Hinnanguline vanus/Estimated age/Предполагаемый возраст\*

-Please Select-

Metsesa asukoht/Location of the dead wild boar/Местонахождение мертвого кабана\*

-Please Select-

Märgi metsesa asukoht kaardile/Mark your sightings on the map/Отметьте кабана на карте\*

Ende asukohta jälgimiseks vajutage navigeerimise nuppu (f) / To track your location, press the navigation key (f) / Чтобы отслеживать свое местоположение, нажмите кнопку навигации (f)

The map interface shows a satellite-style map of Estonia and surrounding regions. A blue location pin is placed on the map. The map includes a search bar at the top with the text "Find address or place". Navigation controls like zoom in (+), zoom out (-), and a home button are visible on the left side. The map shows major cities like Tartu and Lühimäe, and bodies of water like Kõhla-Järve. The text "EESTI" is prominently displayed in the center of the map.



REPUBLIC OF ESTONIA  
AGRICULTURE AND FOOD BOARD

# Thank you!

