



**MINISTÈRE  
DE L'AGRICULTURE  
ET DE L'ALIMENTATION**

*Liberté  
Égalité  
Fraternité*



**FRANCE22**  
PRÉSIDENTE FRANÇAISE  
DU CONSEIL DE L'UNION  
EUROPÉENNE

**AHW.A.07**

# **DETECTION AND ERADICATION OF BOVINE BRUCELLOSIS IN A DAIRY FARM IN FRANCE**

SCoPAFF  
January, 13 2022

# Detection of a brucellosis outbreak in France

- Location: Haute-Savoie (74), in the Alps
- Dairy farm: 219 cattle of abundance breed
  - including 97 dairy cows + 1 bull
- Suspicion: positive serological tests on milk and a positive brucellin skin test on one bovine
- Confirmation: by NRL on November 10, 2021 positive bacteriological analysis after slaughter
  - *Brucella melitensis* biovar 3
  - Cluster of strains identified from wild goats in the Bargy massif in the Alps

Haute-Savoie administrative region in France



A cow of abundance breed



# Mitigation measures in the infected dairy farm

- Immediate notification
- Animal products and by-products were blocked
- All bovines were slaughtered
- Cleaning and disinfection performed
- Other susceptible species in the farm were tested
  - 1 dog tested negative
- Withdrawal and recall of all reblochons produced since the 22nd of September

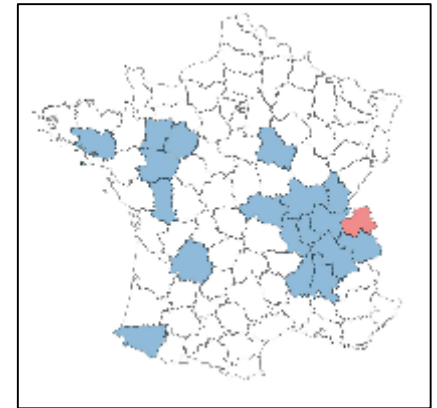
Reblochon, French cheese with PDO



# Epidemiological investigations

- Tracing backward and forward movements of bovines
  - Haute-Savoie department (in red)
  - 18 additional departments concerned
  - In total: 70 farms with epidemiological links
- Farms were blocked (animals and raw milk products)
- Serological analysis:
  - All cattle over 12 months old
  - All small ruminants over 6 months old
- No additional cases detected

Map of France with in blue departement with épidémiologique link

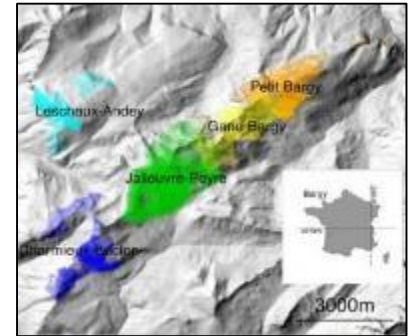


# Epidemiological investigations in cattle

*Targeted surveillance in the Bargy massif since 2012 due to the proximity of wildlife (wild goat)*

- Strengthening of surveillance in the Bargy massif
  - Area of summer pastures
  - Close to the infected farm
  - Known circulation of infected wild goat
- Modality of surveillance
  - For dairy farms: monthly serological test on milk
  - For beef farms: before the pasture, screening of 20% of cattle over 24 months of age
  - For all farms: after the pasture, screening of all cattle over 12 months of age

Map of the Bargy massif in the Alps



# Epidemiological investigations in wildlife

- The source of contamination has not been fully elucidated yet, but...
  - The isolated strain belongs to the cluster of strains isolated from wild goats in the Alps (chamois and ibexes)
  - The implication of wildlife in the contamination process is very likely
  - Wildlife monitoring in Haute-Savoie is strengthened
    - Analysis of hunted animals
    - Shooting of wild goats for analysis
    - and monitoring of prevalence in wild goat

Alpine ibex



Chamois in the Alps





**MINISTÈRE  
DE L'AGRICULTURE  
ET DE L'ALIMENTATION**

*Liberté  
Égalité  
Fraternité*

**THANK YOU FOR YOUR ATTENTION**