



**EUROPEAN COMMISSION**  
HEALTH & CONSUMERS DIRECTORATE-GENERAL

Unit 04 - Veterinary Control Programmes

**SANCO/12874/2010**

*Programmes for the eradication, control and monitoring of certain  
animal diseases and zoonoses*

## **Eradication programme of Ovine and Caprine Brucellosis**

**Approved\* for 2011 by Commission Decision 2010/712/EU**

**Cyprus**

\* in accordance with Council Decision 2009/470/EC

## ANNEX I

**Standard requirements for the submission of national programmes for the eradication, control and monitoring of the animal diseases or zoonoses referred to in Article 1(a)<sup>1</sup>**

### **1. Identification of the programme**

Member State: CYPRUS

Disease(s)<sup>2</sup>: Ovine and Caprine brucellosis

Request of Community co-financing for<sup>3</sup>: 2011

Reference of this document: 137/89/28 Brucellosis, 3/2003/A4

Contact (name, phone, fax, e-mail): Dr. George Christofi

Tel.: 00357 22 805250

Fax: 00357 22 805176

E-mail: animal.health@vs.moa.gov.cy

Date sent to the Commission: 30<sup>th</sup> April 2010.

### **2. Historical data on the epidemiological evolution of the disease(s)<sup>4</sup>**

The sheep & goat brucellosis eradication program is applied on the area controlled by the Veterinary Services of the Republic of Cyprus. The total sheep & goat population under the programme is estimated to 624,424 animals (323,423 sheep and 301,001 goats), reared in 3,410 flocks. The sheep & goat population under the brucellosis eradication program is 532,425 animals (259,334 goats and 273,091 sheep) in 3.265 flocks.

According to the epidemiological data, from 2000 until March 2010, the prevalence and incidence of sheep & goat brucellosis in Cyprus have decreased and remained at very low levels (see Graph 1).

---

<sup>1</sup> In the case of the second and subsequent years of a multi-annual programme that has already been approved by a Commission Decision, only section 1, section 7 and section 8 need to be completed.

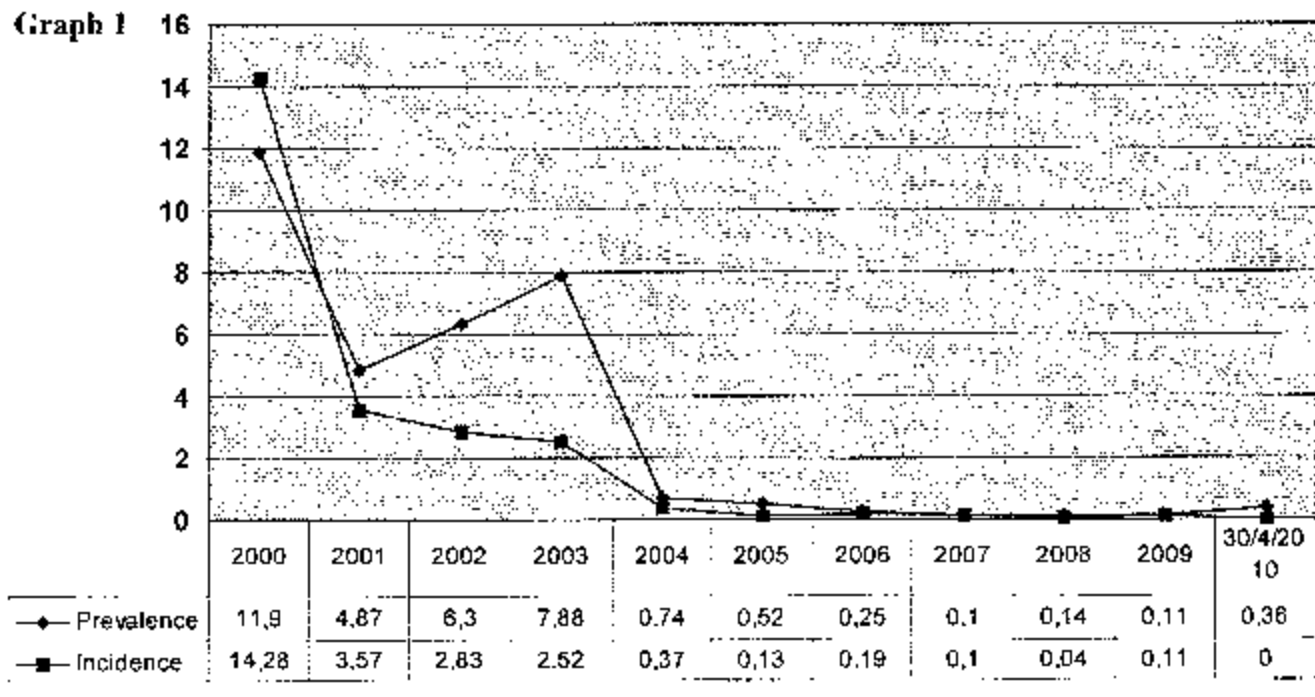
<sup>2</sup> One document per disease is used unless all measures of the programme on the target population are used for the monitoring, the control and eradication of different diseases.

<sup>3</sup> Indicate the year(s) for which co-financing is requested.

<sup>4</sup> A concise description is given with data on the target population (species, number of herds and animals present and under the programme), the main measures (testing, testing and slaughter, testing and killing, qualification of herds and animals, vaccination) and the main results (incidence, prevalence, qualification of herds and animals). The information is given according distinct periods if the measures were substantially modified. The information is documented by relevant summary epidemiological tables, graphs or maps.

From 1999 until October 2004, United Nations Office for Project Services has funded the bicommunal sheep & goat brucellosis eradication program (UNOPS, Cont. No: WSE-PS03-4463). In 2004, 2005, 2006, 2007, 2008 and 2009 the EU has cofinanced the 50% of the programme.

**Graph 1**



### **3. Description of the submitted programme<sup>5</sup>:**

The sheep & goat brucellosis eradication program is based on test and extended slaughter or killing of positive animals, implemented in the area controlled by the Veterinary Services of the Republic of Cyprus, concerning all small ruminants over 6 months old in farms for breeding and production. A percentage of 61.5% of the flocks under the program have been declared brucellosis officially free according to Dir 91/68 EEC, Annex A. The rest herds are under the procedure of granting the officially free status. All animals in not officially free herds are examined serologically every 6 months, while infected flocks are under monthly reexaminations and slaughtering of the positive animals. In officially free herds a percentage

<sup>5</sup> A concise description of the programme is given with the main objective(s) (monitoring, control, eradication, qualification of herds and/or regions, reducing prevalence and incidence), the main measures (testing, testing and slaughter, testing and killing, qualification of herds and animals, vaccination), the target animal population and the area(s) of implementation and the definition of a positive case.

of animals are examined serologically once a year. According to the L.O.725/2003 treatment of infected animals with brucellosis and the use of vaccines are prohibited.

A standardized protocol to deal with no negative results in Rose Bengal test and CFT test has been introduced after evaluation of the available information of the last three years. This protocol includes the interpretation of false positive reactions, based on the serology results, the parallel use and interpretation of the serology follow up tests, the culture results, the number of animals giving positive reactions to the tests in a flock and the epidemiological information such as the brucellosis history of the flock, the presence of symptoms etc as provided by the epidemiological questionnaire in place.

#### **4. Measures of the submitted programme**

##### *4.1. Summary of measures under the programme*

Duration of the programme:

First year: 1999

Last year:

Control

Eradication

Testing

Testing

Slaughter of animals tested positive

Slaughter of animals tested positive

Killing of animals tested positive

Killing of animals tested positive

Vaccination

Extended slaughter or killing

Treatment

Disposal of products

Disposal of products

Eradication, control or monitoring.

Other measures (*specify*):

##### *4.2. Organisation, supervision and role of all stakeholders<sup>6</sup> involved in the programme:*

The Department of Veterinary Services, which belongs to the Ministry of Agriculture Environment and Natural Recourses, is responsible for the application of the sheep & goat

---

<sup>6</sup> Describe the authorities in charge of supervising and coordinating the departments responsible for implementing the programme and the different operators involved. Describe the responsibilities of all involved.

brucellosis eradication program. The Director of the Veterinary Services is responsible for the coordination of the whole program.

The five District Veterinary Offices with six District Veterinary Stations are responsible for the collection and the transport of the samples to the Laboratories, the information of the owners for the results, the epidemiological report in new outbreaks, the slaughter of the seropositive animals and the compensations and the disinfections of the infected farms.

The 3 District Veterinary Laboratories under the supervision of the Central Laboratory are performing the RB test for samples coming from their area. The Central Veterinary Laboratory performs the RB test for one District. All RB positive samples are further processed in the Central Laboratory with CFT.

The Laboratories report all the results to the District Veterinary Offices and the Division of Animal Health and Welfare. The Division of Animal Health and Welfare keeps in a central database all the information about the progress of the program. A committee of three Veterinary Officers examines and evaluates the new outbreaks, the depopulations or the declaration as free of the infected herds taking into account the laboratory results and the epidemiological reports for each case. The committee reports to the Director who takes the final decision and gives instructions to the District Veterinary Officers to take the required actions.

In every positive case the slaughterhouses and the dairy plants are informed.

#### *4.3. Description and demarcation of the geographical and administrative areas in which the programme is to be implemented<sup>7</sup>:*

The program is implemented in all the area controlled by the Veterinary Services of the Republic of Cyprus.

---

<sup>7</sup> Describe the name and denomination, the administrative boundaries, and the surface of the administrative and geographical areas in which the programme is to be applied. Illustrate with maps.



#### 4.4. Description of the measures of the programme<sup>8</sup>:

##### 4.4.1. Notification of the disease:

Brucellosis is a notifiable disease in Cyprus according to article 6 of the Law 109(I)2001. Any case of abortion or other symptoms related to brucellosis are compulsory notifiable to Veterinary Services of the Republic of Cyprus.

##### 4.4.2. Target animals and animal population:

All sheep and goats over 6 months old in breeding and production farms are involved in the programme.

##### 4.4.3. Identification of animals and registration of holdings:

<sup>8</sup> A comprehensive description needs to be provided of all measures unless reference can be made to Community legislation. The national legislation in which the measures are laid down is mentioned.

All sheep & goats are ear tagged on both ears with an individual identification code in accordance with L.O. 507/2004 and EU Reg. 21/2004.

The central authority has registered all sheep & goats flocks in the Republic of Cyprus and each has been allocated a unique herd number in accordance with L.O. 338/2000 and 399/2002.

#### 4.4.4. Qualifications of animals and herds<sup>9</sup>:

The programme for the qualification of the herds is based on the following legislation: 91/68 EEC, L.O. 725/2003 and 56/2005.

#### 4.4.5. Rules on the movement of animals:

All movements of animals should be reported and registered on a central database and are allowed only after a brucellosis negative serological examination.

Movements from infected herds are allowed after a special license and only for slaughtering in a certain slaughterhouse.

The central Database of the Animal Identification and Registration scheme enables tracing of any animal from the date of birth to the date of death or slaughter.

#### 4.4.6. Tests used and sampling schemes:

##### Serological tests:

Flock screening: Rose Bengal Test in all animals over 6 months old.

Confirmation: Complement Fixation Test, in all animals showing positive reaction to Rose Bengal.

---

<sup>9</sup> To mention only if applicable.

Infected farms: Monthly screening of all animals over 6 months with Rose Bengal Test and Complement Fixation Test.

Microbiological or virological tests:

Samples: Milk samples from seropositive animals of new outbreaks (centrifugation and sampling from the cream and deposit)

Aborted fetuses (gastric content and lung)

Isolation: On Brucella medium incubating in 37C with and without CO<sub>2</sub>

Confirmation on the species level: Dyc of the colony with Gram and Stamp. Culture on Mc Conkey agar (lactose fermentation) and Blood agar (Haemolysis).

All animals in not officially free herds are examined serologically every 6 months, while infected flocks are under monthly reexaminations and slaughtering of the positive animals. In officially free herds a percentage of animals are examined serologically once a year.

The programme for the qualification of the flocks is based on the Directive 91/68/EEC.

4.4.7. Vaccines used and vaccination schemes:

According to the L.O.725/2003 the use of vaccines are prohibited.

4.4.8. Information and assessment on bio-security measures management and infrastructure in place in the holdings involved and

4.4.9. Measures in case of a positive result<sup>10</sup>:

After a serologically confirmed positive result, the comitte evaluates the new case taking also into account the data from the epidemiological report and informs the Director who finally gives instructions to the District Veterinary Officers for measures to be taken.

- a. The farm is placed under movement restriction

---

<sup>10</sup> A short description is provided of the measures as regards positive animals (slaughter, destination of carcasses, use or treatment of animal products, the destruction of all products which could transmit the disease or the treatment of such products to avoid any possible contamination, a procedure for the disinfection of infected holdings, the therapeutic or preventive treatment chosen, a procedure for the restocking with healthy animals of holdings which have been depopulated by slaughter and the creation of a surveillance zone around the infected holding.).



- b. The Organizations collecting the milk are notified to collect the milk from the infected farms in separate milk tanks for pasteurization.
- c. Seropositive sheep and goats are isolated from the other animals to be slaughtered in the designated slaughterhouse. In case it is decided that all the animals in the flock will be slaughtered, restocking is permitted after 6 months.
- d. Seropositive animals are valued before slaughter. Compensations 100% of the reproductive value are paid to owners.
- e. Dogs or other species of animals susceptible to brucellosis are also examined serologically.
- f. One month after the slaughter, all sheep and goats over six months old are reexamined serologically and any new seropositive animals are culled.
- g. The owners clean and disinfect their farms under the supervision of the Veterinary Services, which provides the disinfectant free.
- h. The pasture is buried or collected and disinfected in a place far from establishments

All the measures mentioned above are included in the following legislation:

1. The animal health laws (N. 109 (I)/2001, N. 82(I)/2003 and 116(I)/2007)
2. The control of Brucellosis in sheep and goats order of 2003 (L.O. 725/2003)
3. The animal health (requirements governing the trade in ovine and caprine animals), regulations of 2005 (L.O. 56/2005)
4. Directive 91/68/EEC.

#### 4.4.10. Compensation scheme for owners of slaughtered and killed animals:

A designated three member committee has set the maximum market value for the compensated animals which is approximately 14% lower than the maximum reproductive value. Compensated animals include those giving a positive result either to Rose Bengal or to CFT or to both of them or in case of depopulation all the animals of the flock.

#### 4.4.11. Control on the implementation of the programme and reporting:

The progress of the programme performed by the District Veterinary Offices is controlled by the Animal Health and Welfare Division, that is responsible for preparing the reports sent to EC.

## 5. Benefits of the programme<sup>11</sup>:

The costs for the authorities include the money and time spent for the implementation of the program (materials for sampling, testing, transportation of workers, salaries, compensations, transportation of the confiscated animals, disinfections) and also the risk of people working for the program to be infected with brucellosis. In addition, the inconvenience (movement restriction, milk and manure treatment, threat of transmitting the disease to neighbouring farms) that the program creates to the farmers, leads to conflicts with the authorities and other farmers and interferes with the regular application of the program.

However, the benefits for the farmers and society overcome any costs because the assurance of animal and public health through the implementation of the program is very crucial. The eradication of the disease on the long run will increase the productivity of farms concerning milk and meat quantity and quality. Also, farmers and their families will not be under the continuous threat of being infected themselves.

---

<sup>11</sup> A description is provided of the benefits for farmers and society in general.

**6. Data on the epidemiological evolution during the last five years<sup>15</sup>**

**6.1. Evolution of the Disease<sup>16</sup>**

**6.1.1. Data on herds(a) (one table per year and per disease/species)**

Year: 2005

Situation on date:

Disease<sup>(b)</sup>: Brucellosis Animal species: Sheep & goats

| Region <sup>(c)</sup> | Total number of herds <sup>(d)</sup> | Total number of herds under the programme | Number of herds checked <sup>(e)</sup> | Number of positive herds <sup>(f)</sup> | Number of new positive herds <sup>(g)</sup> | Number of herds depopulated | % positive herds depopulated | INDICATORS            |   |                                     |
|-----------------------|--------------------------------------|---|--|---|---|-----------------------------|------------------------------|-----------------------|---|-------------------------------------|
|                       |                                      |   |  |   |   |                             |                              | % herd coverage       | % positive herds Period herd prevalence | % new positive herds Herd incidence |
| 1                     | 2                                    | 3   | 4                                      | 5                                       | 6   | 7                           | $8 = (7.5 \times 100)$       | $9 = (10 \times 100)$ | $10 = (8.4 \times 100)$                 | $11 = (66.6 \times 100)$            |
| ALL REGIONS           | 4,152                                | 4,025                                     | 3,094                                  | 16                                      | 4   | 1                           | 6.25%                        | 77%                   | 0.52%                                   | 0.13%                               |
| Total                 | 4,152                                | 4,025                                     | 3,094                                  | 16                                      | 4   | 1                           | 6.25%                        | 77%                   | 0.52%                                   | 0.13%                               |

(a) Herds or flocks, or holdings as appropriate.

(b) Disease and animal species if necessary.

(c) Region as defined in the eradication programme of the Member State.

(d) Total number of herds existing in the region including eligible herds and non-eligible herds for the programme.

<sup>15</sup> The data on the evolution of the disease are provided according to the tables below where appropriate.

<sup>16</sup> No data to provide in case of rabbits.

- (e) Check means to perform a herd level test under the programme for the respective disease with the purpose of maintaining or upgrading, the health status of the herd. In this column a herd should not be counted twice even if it has been checked more than once.
- (f) Herds with at least one positive animal during the period independent of the number of times the herd has been checked.
- (g) Herds which status in the previous period was *Unknown, Not free-negative, Free, Officially Free or Suspended* and have at least one animal tested positive in this period.

Year: 2006

Situation on date:

Disease<sup>(b)</sup>: **Brucellosis**

Animal species: **Sheep & goats**

| Region <sup>(c)</sup> | Total number of herds <sup>(a)</sup> | Total number of herds under the programme | Number of herds checked <sup>(e)</sup> | Number of positive herds <sup>(f)</sup> | Number of new positive herds <sup>(g)</sup> | Number of herds depopulated | % positive herds depopulated | INDICATORS      |  |  |
|-----------------------|--------------------------------------|---|--|---|---|-----------------------------|------------------------------|-----------------|--|--|
|                       |                                      |   |  |   |   |                             |                              | % herd coverage | % positive herds<br>Period herd prevalence | % new positive herds<br>Herd incidence |
| J                     | 2                                    | 3   | 4                                      | 5                                       | 6   | 7                           | 8 (7/5)x100                  | 9 (4/3)x100     | 10 - (5/4)x100                             | 11 (6/3)x100                           |
| ALL REGIONS           | 3,855                                | 3,722                                     | 3,210                                  | 8                                       | 6   | 1                           | 12.5%                        | 86.2%           | 0.25%                                      | 0.19%                                  |
| Total                 | 3,855                                | 3,722                                     | 3,210                                  | 8                                       | 6   | 1                           | 12.5%                        | 86.2%           | 0.25%                                      | 0.19%                                  |

Year: 2007

Situation on date:

Disease<sup>(a)</sup>: Brucellosis

Animal species: Sheep & goats

| Region <sup>(c)</sup> | Total number of herds <sup>(b)</sup> | Total number of herds under the programme | Number of herds checked <sup>(d)</sup> | Number of positive herds <sup>(e)</sup> | Number of new positive herds <sup>(e)</sup> | Number of herds depopulated | % positive herds depopulated | INDICATORS      |   |                                     |
|-----------------------|--------------------------------------|---|--|---|---|-----------------------------|------------------------------|-----------------|---|-------------------------------------|
|                       |                                      |   |  |   |   |                             |                              | % herd coverage | % positive herds Period herd prevalence | % new positive herds Herd incidence |
| L                     | 2                                    | 3   | 4                                      | 3                                       | 6   | 7                           | 8 = (7/3)X100                | 9 (4/3)x100     | 10 = (3/3)x100                          | 11 = (6/3)x100                      |
| ALL REGIONS           | 3,583                                | 3,439                                     | 2,946                                  | 3                                       | 3   | 0                           | 0%                           | 85.7%           | 0.10%                                   | 0.10%                               |
| Total                 | 3,583                                | 3,439                                     | 2,946                                  | 3                                       | 3   | 0                           | 0%                           | 85.7%           | 0.10%                                   | 0.10%                               |

EN

12

EN

Year: 2008

Situation on date:

Disease<sup>(a)</sup>: Brucellosis

Animal species: sheep & goats

| Region <sup>(c)</sup> | Total number of herds <sup>(b)</sup> | Total number of herds under the programme | Number of herds checked <sup>(1)</sup> | Number of positive herds <sup>(b)</sup> | Number of new positive herds <sup>(b)</sup> | Number of herds depopulated | % positive herds depopulated | INDICATORS      |  |  |
|-----------------------|--------------------------------------|---|--|---|---|-----------------------------|------------------------------|-----------------|--|--|
|                       |                                      |   |  |   |   |                             |                              | % herd coverage | % positive herds<br>Period herd prevalence | % new positive herds<br>Herd incidence |
| 1                     | 2                                    | 2   | 4                                      | 5                                       | 6   | 7                           | 8 = (7.5) x 100              | 9 = (4.2) x 100 | 10 = (5.4) x 100                           | 11 = (6.9) x 100                       |
| ALL REGIONS           | 3,482                                | 3,241                                     | 2,803                                  | 4                                       | 1   | 0                           | 0%                           | 83.9%           | 0.14%                                      | 0.04%                                  |
| <b>Total</b>          | <b>3,482</b>                         | <b>3,241</b>                              | <b>2,803</b>                           | <b>4</b>                                | <b>1</b>                                    | <b>0</b>                    | <b>0%</b>                    | <b>83.9%</b>    | <b>0.14%</b>                               | <b>0.04%</b>                           |

Year: 2009

Situation on date: 2009

Disease<sup>(b)</sup>: Brucellosis

Animal species: sheep & goats

| Region <sup>(a)</sup> | Total number of herds <sup>(a)</sup> | Total number of herds under the programme | Number of herds checked <sup>(a)</sup> | Number of positive herds <sup>(c)</sup> | Number of new positive herds <sup>(a)</sup> | Number of herds depopulated | % positive herds depopulated | INDICATORS             |   |                                       |
|-----------------------|--------------------------------------|---|--|---|---|-----------------------------|------------------------------|------------------------|---|---------------------------------------|
|                       |                                      |   |  |   |   |                             |                              | % herd coverage        | % positive herds / period herd prevalence | % new positive herds / herd incidence |
| 1                     | 2                                    | 3   | 4                                      | 5                                       | 6   | 7                           | $0 = (7/3) \times 100$       | $9 = (4/3) \times 100$ | $10 = (3/3) \times 100$                   | $11 = (3/3) \times 100$               |
| ALL REGIONS           | 3,413                                | 3,267                                     | 2,677                                  | 3                                       | 3   | 0                           | 0%                           | 82%                    | 0.11%                                     | 0.11%                                 |
| Total                 | 3,413                                | 3,267                                     | 2,677                                  | 3                                       | 3   | 0                           | 0%                           | 82%                    | 0.11%                                     | 0.11%                                 |



Year: 2010

Situation on date: 31/3/2010

Disease<sup>(b)</sup>: Brucellosis

Animal species: sheep & goats

| Region <sup>(a)</sup> | Total number of herds <sup>(a)</sup> | Total number of herds under the programme | Number of herds checked <sup>(a)</sup> | Number of positive herds <sup>(a)</sup> | Number of new positive herds <sup>(a)</sup> | Number of herds depopulated | % positive herds depopulated | INDICATORS      |   |                                     |
|-----------------------|--------------------------------------|---|--|---|---|-----------------------------|------------------------------|-----------------|---|-------------------------------------|
|                       |                                      |   |  |   |   |                             |                              | % herd coverage | % positive herds period herd prevalence | % new positive herds Herd incidence |
| 1                     | 2                                    | 2   | 4                                      | 5                                       | 6   | 1                           | 8 (75) x 100                 | 9 = (45) x 100  | 10 (54) x 100                           | 11 = (54) x 100                     |
| ALL REGIONS           | 3,410                                | 3,265                                     | 840                                    | 3                                       | 0   | 0                           | 0%                           | 25,7%           | 0,36%                                   | 0%                                  |
| TOTAL                 | 3,410                                | 3,265                                     | 840                                    | 3                                       | 0   | 0                           | 0%                           | 25,7%           | 0,36%                                   | 0%                                  |

EN

15

EN

6.1.2. Data on animals (one table per year and per disease/species)

Year: 2005

Situation on date:

Disease<sup>(a)</sup>: Brucellosis

Animal species: Sheep & goats

| Region <sup>(b)</sup> | Total number of animals <sup>(c)</sup> | Number of animals <sup>(c)</sup> to be tested under the programme | Number of animals <sup>(c)</sup> tested | Number of animals tested individually <sup>(c)</sup> | Number of positive animals | Slaughtering   |  | INDICATORS                 |   |
|-----------------------|--|---|---|--|----------------------------|--|--|----------------------------|---|
|                       |  |   |   |  |                            | Number of animals with positive result slaughtered or culled | Total number of animals slaughtered <sup>(d)</sup> | % coverage at animal level | % positive animals<br>Animal prevalence |
| I                     | 2                                      | 3   | 4                                       | 5  | 6                          | 7  | 8  | 9-(10)X100                 | 10-(11)X100                             |
| ALL REGIONS           | 588,756                                | 548,063   | 447,940                                 | 447,940  | 269                        | 269  | 1,592  | 81.7%                      | 0.06%                                   |
|                       |  |   |   |  |                            |  |  |                            |   |
|                       |  |   |   |  |                            |  |  |                            |   |
|                       |  |   |   |  |                            |  |  |                            |   |
|                       |  |   |   |  |                            |  |  |                            |   |
|                       |  |   |   |  |                            |  |  |                            |   |
| Total                 | 588,756                                | 548,063   | 447,940                                 | 447,940  | 269                        | 269  | 1,592  | 81.7%                      | 0.06%                                   |

(a) Disease and animal species if necessary.

(b) Region as defined in the approved eradication programme of the Member State.

(c) Total number of animals existing in the region including eligible herds and non-eligible herds for the programme.

(d) Includes animals tested individually or under bulk level scheme.

(e) Include only animals tested individually, do not include animals tested by bulk level samples (e.g.: milk bulk tank tests).

(f) Include all positive animal slaughtered and also the negative animals slaughtered under the programme.

Year: 2006

Situation on date:

Disease<sup>(a)</sup>: Brucellosis

Animal species: Sheep & goats

| Region <sup>(b)</sup> | Total number of animals <sup>(c)</sup> | Number of animals <sup>(c)</sup> to be tested under the programme | Number of animals <sup>(d)</sup> tested | Number of animals tested individually <sup>(e)</sup> | Number of positive animals | Slaughtering   |  | INDICATORS                 |   |
|-----------------------|--|---|---|--|----------------------------|--|--|----------------------------|---|
|                       |  |   |   |  |                            | Number of animals with positive result slaughtered or culled | Total number of animals slaughtered <sup>(f)</sup> | % coverage of animal level | % positive animals<br>Animal prevalence |
| 1                     | 2                                      | 3   | 4                                       | 5  | 6                          | 7  | 8  | 9 (2.3x100)                | 10 (6.4x100)                            |
| ALL REGIONS           | 627,249                                | 581,266   | 326,343                                 | 326,343  | 77                         | 77   | 755  | 55.9%                      | 0.02%                                   |
| Total                 | 627,249                                | 581,266   | 326,343                                 | 326,343  | 77                         | 77   | 755  | 55.9%                      | 0.02%                                   |

(a) Disease and animal species if necessary.

(b) Region as defined in the approved eradication programme of the Member State.

(c) Total number of animals existing in the region including eligible herds and non-eligible herds for the programme.

(d) Includes animals tested individually or under bulk level scheme.

(e) Include only animals tested individually, do not include animals tested by bulk level samples (e.g.: milk bulk tank tests).

(f) Include all positive animal slaughtered and also the negative animals slaughtered under the programme.

Year: 2007

Situation on date:

Disease<sup>(a)</sup>: Brucellosis

Animal species: Sheep & goats

| Region <sup>(b)</sup> | Total number of animals <sup>(c)</sup> | Number of animals <sup>(d)</sup> to be tested under the programme | Number of animals <sup>(e)</sup> tested | Number of animals tested individually <sup>(f)</sup> | Number of positive animals | Slaughtering   |  | INDICATORS                 |   |
|-----------------------|--|---|---|--|----------------------------|--|--|----------------------------|---|
|                       |  |   |   |  |                            | Number of animals with positive result slaughtered or called | Total number of animals slaughtered <sup>(g)</sup> | % coverage at animal level | % positive animals<br>Animal prevalence |
| 1                     | 2                                      | 3   | 4                                       | 5  | 6                          | 7  | 8  | 9=(4,3)x100                | 10=(6,4)x100                            |
| ALL REGIONS           | 620,106                                | 570,829   | 243,700                                 | 243,700  | 3                          | 3  | 30   | 42,7%                      | 0,001%                                  |
| Total                 | 620,106                                | 570,829   | 243,700                                 | 243,700  | 3                          | 3  | 30   | 42,7%                      | 0,001%                                  |

(a) Disease and animal species if necessary.

(b) Region as defined in the approved eradication programme of the Member State.

(c) Total number of animals existing in the region including eligible herds and non-eligible herds for the programme.

(d) Includes animals tested individually or under bulk level scheme.

(e) Include only animals tested individually, do not include animals tested by bulk level samples (e.g.: milk bulk tank tests).

(f) Include all positive animal slaughtered and also the negative animals slaughtered under the programme.

**Year: 2008**

**Situation on date:**

**Disease<sup>(b)</sup>: Brucellosis**

**Animal species: Sheep & goats**

| Region <sup>(a)</sup> | Total number of animals <sup>(a)</sup> | Number of animals <sup>(a)</sup> to be tested under the programme | Number of animals <sup>(a)</sup> tested | Number of animals tested individually <sup>(a)</sup> | Number of positive animals | Slaughtering   |  | INDICATORS                 |                                      |
|-----------------------|--|---|---|--|----------------------------|--|--|----------------------------|--------------------------------------|
|                       |  |   |   |  |                            | Number of animals with positive result slaughtered or culled | Total number of animals slaughtered <sup>(b)</sup> | % coverage at animal level | % positive animals Animal prevalence |
| 1                     | 2                                      | 3   | 4                                       | 5  | 6                          | 7  | 8  | 9 (4-7)/100                | 10 (6-4)/100                         |
| ALL REGIONS           | 562,759                                | 485,555   | 222,856                                 | 222,856  | 1                          | 1  | 28   | 86,3%                      | 0,0004%                              |
|                       |  |   |   |  |                            |  |  |                            |                                      |
|                       |  |   |   |  |                            |  |  |                            |                                      |
|                       |  |   |   |  |                            |  |  |                            |                                      |
|                       |  |   |   |  |                            |  |  |                            |                                      |
|                       |  |   |   |  |                            |  |  |                            |                                      |
| <b>Total</b>          | 562,759                                | 485,555   | 222,856                                 | 222,856  | 1                          | 1  | 28   | 86,3%                      | 0,0004%                              |

(a) Disease and animal species if necessary.

(b) Region as defined in the approved eradication programme of the Member State.

(c) Total number of animals existing in the region including eligible herds and non-eligible herds for the programme.

(d) Includes animals tested individually or under bulk level scheme.

(e) Include only animals tested individually, do not include animals tested by bulk level samples (e.g.: milk bulk tank tests).

(f) Include all positive animal slaughtered and also the negative animals slaughtered under the programme.

Year: 2009

Situation on date: 2009

Disease<sup>(a)</sup>: Brucellosis

Animal species: Sheep & goats

| Region <sup>(b)</sup> | Total number of animals <sup>(c)</sup> | Number of animals <sup>(d)</sup> to be tested under the programme | Number of animals <sup>(d)</sup> tested | Number of animals tested individually <sup>(e)</sup> | Number of positive animals | Slaughtering   |  | INDICATORS                 |   |
|-----------------------|--|---|---|--|----------------------------|--|--|----------------------------|---|
|                       |  |   |   |  |                            | Number of animals with positive result slaughtered or killed | Total number of animals slaughtered <sup>(f)</sup> | % coverage at animal level | % positive animals<br>Animal prevalence |
| J                     | 2                                      | 3   | 4                                       | 5  | 6                          | 7  | 8  | 9 = (4/3) x 100            | 10 = (6/4) x 100                        |
| ALL REGIONS           | 566,393                                | 487,624   | 199,692                                 | 199,692  | 3                          | 3  | 22   | 41%                        | 0.0015%                                 |
|                       |  |   |   |  |                            |  |  |                            |   |
|                       |  |   |   |  |                            |  |  |                            |   |
|                       |  |   |   |  |                            |  |  |                            |   |
|                       |  |   |   |  |                            |  |  |                            |   |
| Total                 | 566,393                                | 487,624   | 199,692                                 | 199,692  | 3                          | 3  | 22   | 41%                        | 0.0015%                                 |

(a) Disease and animal species if necessary.

(b) Region as defined in the approved eradication programme of the Member State.

(c) Total number of animals existing in the region including eligible herds and non-eligible herds for the programme.

(d) Includes animals tested individually or under bulk level scheme.

(e) Include only animals tested individually, do not include animals tested by bulk level samples (e.g. milk bulk tank tests).

(f) Include all positive animal slaughtered and also the negative animals slaughtered under the programme.

Year: 2010

Situation on date: 31/3/2010

Disease<sup>(a)</sup>: Brucellosis

Animal species: Sheep & goats

| Region <sup>(b)</sup> | Total number of animals <sup>(c)</sup> | Number of animals <sup>(c)</sup> to be tested under the programme | Number of animals <sup>(c)</sup> tested | Number of animals tested individually <sup>(e)</sup> | Number of positive animals | Slaughtering   |  | INDICATORS                 |   |
|-----------------------|--|---|---|--|----------------------------|--|--|----------------------------|---|
|                       |  |   |   |  |                            | Number of animals with positive result slaughtered or culled | Total number of animals slaughtered <sup>(d)</sup> | % coverage at animal level | % positive animals<br>Animal prevalence |
| 1                     | 2                                      | 3   | 4                                       | 3  | 6                          | 7  | 8  | 9 (4.3%)(10)               | 10 (6.4%)(10)                           |
| ALL REGIONS           | 624,424                                | 532,425   | 53,050                                  | 53,050   | 5                          | 5  | 12   | 10%                        | 0,009%                                  |
|                       |  |   |   |  |                            |  |  |                            |   |
|                       |  |   |   |  |                            |  |  |                            |   |
|                       |  |   |   |  |                            |  |  |                            |   |
|                       |  |   |   |  |                            |  |  |                            |   |
| Total                 | 624,424                                | 532,425   | 53,050                                  | 53,050   | 5                          | 5  | 12   | 10%                        | 0,009%                                  |

(a) Disease and animal species if necessary.

(b) Region as defined in the approved eradication programme of the Member State.

(c) Total number of animals existing in the region including eligible herds and non-eligible herds for the programme.

(d) Includes animals tested individually or under bulk level scheme.

(e) Include only animals tested individually, do not include animals tested by bulk level samples (e.g.: milk bulk tank tests).

(f) Include all positive animal slaughtered and also the negative animals slaughtered under the programme.

## 6.2. Stratified data on surveillance and laboratory tests

### 6.2.1. Stratified data on surveillance and laboratory tests (one table per year and per disease/species)

**Year:** 2005      **Disease<sup>(a)</sup>:** Brucellosis      **Animal species/category:** Sheep & goats

**Description of the used serological tests:**

**Flock screening:** Rose Bengal Test in all animals over 6 months old

**Confirmation:** Complement Fixation Test, in all animals showing positive reaction to Rose Bengal

In case a flock has animals over 5% reacting to Rose Bengal, all animals in the flock are examined with Complement Fixation Test

**Description of the used microbiological or virological tests:**

**Samples:** Milk samples from seropositive animals of new outbreaks (centrifugation and sampling from the cream and deposit)

Aborted fetuses (gastric content and lung)

**Isolation:** On Brucella medium incubating in 37°C with and without CO<sub>2</sub>

**Confirmation on the species level:** Dye of the colony with Gram and Stamp. Culture on Mc Conkey agar (lactose fermentation) and Blood agar (Haemolysis).

**Description of the other used tests:**

**Year:** 2005      **Disease<sup>(a)</sup>:** Brucellosis      **Animal species/category<sup>(b)</sup>:** Sheep & goats

| Region <sup>(b)</sup> | Serological tests                       |   | Microbiological or virological tests    |   |       |   | Other tests                               |      |
|-----------------------|---|---|---|---|-------|---|---|------|
|                       | Number of samples tested <sup>(c)</sup> | Number of positive samples <sup>(d)</sup> | Number of samples tested <sup>(e)</sup> | Number of positive samples <sup>(e)</sup> |       | Number of samples tested <sup>(f)</sup> | Number of positive samples <sup>(g)</sup> |      |
|                       |   |   |   | MILK                                      | FETUS |   |   | MILK |
| ALL REGIONS           | 447,940                                 | 269                                       | 44                                      | 3   | 150   | 4                                       |   |      |
| Total                 | 447,940                                 | 269                                       | 44                                      | 3   | 150   | 4                                       |   |      |

(a) Disease and animal species if necessary.



(b) Region as defined in the approved eradication programme of the Member State.

(c) Number of samples tested.

(d) Number of positive samples.

**Year:** 2006 **Disease<sup>(a)</sup>:** Brucellosis

**Animal species/category<sup>(b)</sup>:** Sheep & goats

**Description of the used serological tests:**

Flock screening: Rose Bengal Test in all animals over 6 months old

Confirmation: Complement Fixation Test, in all animals showing positive reaction to Rose Bengal

In case a flock has animals over 5% reacting to Rose Bengal, all animals in the flock are examined with Complement Fixation Test

**Description of the used microbiological or virological tests:**

Samples: Milk samples from seropositive animals of new outbreaks (centrifugation and sampling from the cream and deposit)

Aborted fetuses (gastric content and lung)

Isolation: On Brucella medium incubating in 37°C with and without CO<sub>2</sub>

Confirmation on the species level: Dye of the colony with Gram and Stamp. Culture on Mc Conkey agar (lactose fermentation) and Blood agar (Haemolysis).

**Description of the other used tests:**

**Year:** 2006 **Disease<sup>(a)</sup>:** Brucellosis

**Animal species/category<sup>(b)</sup>:** Sheep & goats

| Region <sup>(b)</sup> | Serological tests                       |   | Microbiological or virological tests             |   |   |   | Other tests |  |
|-----------------------|---|---|--|---|---|---|-------------|--|
|                       | Number of samples tested <sup>(c)</sup> | Number of positive samples <sup>(d)</sup> | Number of positive samples tested <sup>(c)</sup> | Number of positive samples <sup>(d)</sup> | Number of samples tested <sup>(c)</sup> | Number of positive samples <sup>(d)</sup> |             |  |
| ALL REGIONS           | 336.343                                 | 77  | 5  | 0   | 21                                      | 0   |             |  |

|       |         |    |   |   |    |   |
|-------|---------|----|---|---|----|---|
| Total | 326,343 | 77 | 5 | 0 | 23 | 0 |
|-------|---------|----|---|---|----|---|

- (a) Disease and animal species if necessary.  
 (b) Region as defined in the approved eradication programme of the Member State.  
 (c) Number of samples tested.  
 (d) Number of positive samples.

**Year:** 2007 **Disease<sup>(a)</sup>:** Brucellosis **Animal species/category<sup>(b)</sup>:** Sheep & goats

**Description of the used serological tests:**

Flock screening: Rose Bengal Test in all animals over 6 months old

**Confirmation:** Complement Fixation Test, in all animals showing positive reaction to Rose Bengal

**Infected farms:** Monthly screening of all animals over 6 months with Rose Bengal Test and Complement Fixation Test.

**Description of the used microbiological or virological tests:**

**Samples:** Milk samples from seropositive animals of new outbreaks (centrifugation and sampling from the cream and deposit)

Aborted fetuses (gastric content and lung)

**Isolation:** On Brucella medium incubating in 37°C with and without CO<sub>2</sub>

**Confirmation on the species level:** Dye of the colony with Gram and Stamp. Culture on Mc Conkey agar (lactose fermentation) and Blood agar (Haemolysis).

**Description of the other used tests:**

**Year:** 2007 **Disease<sup>(a)</sup>:** Brucellosis **Animal species/category<sup>(b)</sup>:** Sheep & goats

| Region <sup>(b)</sup> | Serological tests                       |   | Microbiological or virological tests    |   |   | Other tests                               |  |
|-----------------------|---|---|---|---|---|---|--|
|                       | Number of samples tested <sup>(c)</sup> | Number of positive samples <sup>(d)</sup> | Number of samples tested <sup>(c)</sup> | Number of positive samples <sup>(d)</sup> | Number of samples tested <sup>(c)</sup> | Number of positive samples <sup>(d)</sup> |  |
|                       |   |   |   |   |   |   |  |

|             |         |   | MILK | MILK | FETUS | FETUS |
|-------------|---------|---|------|------|-------|-------|
| ALL REGIONS | 243,700 | 3 | 8    | 0    | 68    | 4     |
| Total       | 243,700 | 3 | 8    | 0    | 68    | 0     |

- (a) Disease and animal species if necessary.  
 (b) Region as defined in the approved eradication programme of the Member State.  
 (c) Number of samples tested.  
 (d) Number of positive samples.

**Year:** 2008      **Disease<sup>(a)</sup>:** Brucellosis

**Animal species/category<sup>(b)</sup>:** Sheep & goats

**Description of the used serological tests:**

Flock screening: Rose Bengal Test in all animals over 6 months old

Confirmation: Complement Fixation Test, in all animals showing positive reaction to Rose Bengal

Infected farms: Monthly screening of all animals over 6 months with Rose Bengal Test and Complement Fixation Test.

**Description of the used microbiological or virological tests:**

Samples: Milk samples from seropositive animals of new outbreaks (centrifugation and sampling from the cream and deposit)

Aborted fetuses (gastric content and lung)

Isolation: On Brucella medium incubating in 37°C with and without CO<sub>2</sub>

Confirmation on the species level: Dye of the colony with Gram and Stamp. Culture on Mc Conkey agar (lactose fermentation) and Blood agar (Haemolysis).

**Description of the other used tests:**

**Year:** 2008      **Disease<sup>(a)</sup>:** Brucellosis

**Animal species/category<sup>(b)</sup>:** Sheep & goats

| Region <sup>(b)</sup> | Serological tests | Microbiological or virological tests | Other tests |
|-----------------------|-------------------|--------------------------------------|-------------|
|                       |                   |                                      |             |

|             | Number of samples tested <sup>(c)</sup> | Number of positive samples <sup>(d)</sup> | Number of samples tested <sup>(c)</sup> |      | Number of positive samples <sup>(d)</sup> |       | Number of positive samples <sup>(d)</sup> | Number of samples tested <sup>(c)</sup> | Number of positive samples <sup>(d)</sup> |
|-------------|---|---|---|------|---|-------|---|---|---|
|             |   |   | MILK                                    | MILK | MILK                                      | FETUS |   |   |   |
| ALL REGIONS | 222,856                                 | 1   | 1                                       | 0    | 0   | 0     | 14  | 0                                       |   |
| Total       | 222,856                                 | 1   | 1                                       | 0    | 0   | 0     | 14  | 0                                       |   |

- (a) Disease and animal species if necessary.  
 (b) Region as defined in the approved eradication programme of the Member State.  
 (c) Number of samples tested.  
 (d) Number of positive samples.

**Year:** 2009 **Disease<sup>(a)</sup>:** Brucellosis

**Animal species/category<sup>(b)</sup>:** Sheep & goats

**Description of the used serological tests:**

**Flock screening:** Rose Bengal Test in all animals over 6 months old

**Confirmation:** Complement Fixation Test, in all animals showing positive reaction to Rose Bengal

**Infected farms:** Monthly screening of all animals over 6 months with Rose Bengal Test and Complement Fixation Test.

**Description of the used microbiological or virological tests:**

**Samples:** Milk samples from seropositive animals of new outbreaks (centrifugation and sampling from the cream and deposit)

Aborted fetuses (gastric content and lung)

**Isolation:** On Brucella medium incubating in 37°C with and without CO<sub>2</sub>

**Confirmation on the species level:** Dye of the colony with Gram and Stamp. Culture on Mc Conkey agar (lactose fermentation) and Blood agar (Haemolysis).

**Description of the other used tests:**

**Year:** 2009 **Disease<sup>(a)</sup>:** Brucellosis

**Animal species/category<sup>(b)</sup>:** Sheep & goats

| Region <sup>(c)</sup> | Serological tests                       |   | Microbiological or virological tests    |   |   |   | Other tests                               |  |
|-----------------------|---|---|---|---|---|---|---|--|
|                       | Number of samples tested <sup>(c)</sup> | Number of positive samples <sup>(d)</sup> | Number of samples tested <sup>(c)</sup> | Number of positive samples <sup>(d)</sup> | Number of positive samples <sup>(d)</sup> | Number of samples tested <sup>(c)</sup> | Number of positive samples <sup>(d)</sup> |  |
| ALL REGIONS           | 199,692                                 | 3   | MDJ.K<br>5                              | MILK<br>0                                 | FETUS<br>34                               | FETUS<br>0                              |   |  |
| Total                 | 199,692                                 | 3   | 5                                       | 0   | 34  | 0                                       |   |  |

(a) Disease and animal species if necessary.

(b) Region as defined in the approved eradication programme of the Member State.

(c) Number of samples tested.

(d) Number of positive samples.

**Year:** 31/3/2010

**Disease<sup>(a)</sup>:** Brucellosis

**Animal species/category<sup>(b)</sup>:** Sheep & goats

**Description of the used serological tests:**

**Flock screenings:** Rose Bengal Test in all animals over 6 months old

**Confirmation:** Complement Fixation Test, in all animals showing positive reaction to Rose Bengal

**Infected farms:** Monthly screening of all animals over 6 months with Rose Bengal Test and Complement Fixation Test.

**Description of the used microbiological or virological tests:**

**Samples:** Milk samples from seropositive animals of new outbreaks (centrifugation and sampling from the cream and deposit)

Aborted fetuses (gastric content and lung)

**Isolation:** On Brucella medium incubating in 37°C with and without CO<sub>2</sub>

**Confirmation on the species level:** Dye of the colony with Gram and Stamp. Culture on Mc Conkey agar (lactose fermentation) and Blood agar (Haemolysis).

**Description of the other used tests:**

**Year:** 31/3/2010

**Disease<sup>(a)</sup>:** Brucellosis

**Animal species/category<sup>(b)</sup>:** Sheep & goats

| Region <sup>(b)</sup> | Serological tests                       |   | Microbiological or virological tests    |   |       |   | Other tests                               |  |
|-----------------------|---|---|---|---|-------|---|---|--|
|                       | Number of samples tested <sup>(a)</sup> | Number of positive samples <sup>(a)</sup> | Number of samples tested <sup>(c)</sup> | Number of positive samples <sup>(d)</sup> |       | Number of samples tested <sup>(c)</sup> | Number of positive samples <sup>(e)</sup> |  |
|                       |   |   |   | MILK                                      | FFTCS |   |   |  |
| ALL REGIONS           | 53,050                                  | 5   | 4                                       | 0   | 33    | 0                                       |   |  |
| Total                 | 53,050                                  | 5   | 4                                       | 0   | 33    | 0                                       |   |  |

(a) Disease and animal species if necessary.

(b) Region as defined in the approved eradication programme of the Member State.

(c) Number of samples tested.

(d) Number of positive samples.

### 6.3. Data on infection (one table per year and per disease/species)

Year: 1999-31/3/2010

Disease<sup>(a)</sup>: Brucellosis

Animal species: Sheep & goats

| Region <sup>(b)</sup><br>CYPRUS | YEAR      | Number of herds infected <sup>(c)</sup> |                                |               |             | Number of animals infected |                                  |
|---------------------------------|-----------|---|--------------------------------|---------------|-------------|----------------------------|----------------------------------|
|                                 |           | New outbreaks                           | Infected herds during the year | Declared free | Depopulated |                            | Remaining At the end of the year |
|                                 | 1999      | 8                                       | 8                              | 0             | 2           | 6                          | 195                              |
|                                 | 2000      | 36                                      | 42                             | 0             | 5           | 37                         | 895                              |
|                                 | 2001      | 13                                      | 50                             | 24            | 6           | 20                         | 1153                             |
|                                 | 2002      | 232                                     | 252                            | 6             | 31          | 215                        | 3006                             |
|                                 | 2003      | 64                                      | 279                            | 141           | 19          | 119                        | 1385                             |
|                                 | 2004      | 16                                      | 135                            | 97            | 8           | 30                         | 212                              |
|                                 | 2005      | 4                                       | 34                             | 19            | 1           | 14                         | 269                              |
|                                 | 2006      | 6                                       | 20                             | 14            | 1           | 5                          | 77                               |
|                                 | 2007      | 3                                       | 8                              | 5             | 0           | 3                          | 3                                |
|                                 | 2008      | 1                                       | 4                              | 4             | 0           | 0                          | 1                                |
|                                 | 2009      | 3                                       | 3                              | 0             | 0           | 3                          | 3                                |
|                                 | 31/3/2010 | 0                                       | 3                              | 0             | 0           | 3                          | 5                                |

(a) Disease and animal species if necessary.

(b) Region as defined in the eradication programme of the Member State.

(c) Herds or flocks or holdings as appropriate.

**EN**

35

**EN**



6.4. Data on the status of herds at the end of each year<sup>17</sup>

| Year: 2004 | Region <sup>(a)</sup> | Disease <sup>(a)</sup> : Brucellosis                  |                        | Animal species: Sheep & goats |                        | Status of herds and animals under the programme <sup>(c)</sup> |                        |                                    |                        |                                    |                        |  |                        |                                  |                        |   |                        |
|------------|-----------------------|---|------------------------|-------------------------------|------------------------|--|------------------------|------------------------------------|------------------------|------------------------------------|------------------------|--|------------------------|----------------------------------|------------------------|---|------------------------|
|            |                       | Total number of herds and animals under the programme |                        | Unknown <sup>(d)</sup>        |                        | Not free or not officially free from disease                   |                        | Last check positive <sup>(e)</sup> |                        | Last check negative <sup>(e)</sup> |                        | Free or officially free from disease status suspended <sup>(f)</sup> |                        | Free from disease <sup>(h)</sup> |                        | Officially free from disease <sup>(g)</sup> |                        |
|            |                       | Herds   | Animals <sup>(b)</sup> | Herds                         | Animals <sup>(b)</sup> | Herds  | Animals <sup>(b)</sup> | Herds                              | Animals <sup>(b)</sup> | Herds                              | Animals <sup>(b)</sup> | Herds  | Animals <sup>(b)</sup> | Herds                            | Animals <sup>(b)</sup> | Herds                                       | Animals <sup>(b)</sup> |
|            | ALL REGIONS           | 4,059   | 506,428                | 0                             | 0                      | 7  | 3,410                  | 2,392                              | 361,278                | 2,389                              | 361,052                | 3  | 226                    | 1,660                            | 141,740                |   |                        |
|            | Total                 | 4,059   | 506,428                | 0                             | 0                      | 7  | 3,410                  | 2,392                              | 361,278                | 2,389                              | 361,052                | 3  | 226                    | 1,660                            | 141,740                |   |                        |

(a) Disease and species if necessary

(b) Region as defined in the approved eradication programme of the Member State

(c) At the end of the year

(d) Unknown: No previous checking results available

(e) Not free and last check positive: Herd checked with at least one positive result in the latest check

(f) Not free and last check negative: Herd checked with negative results in the latest check but not being "free" or "officially free"

(g) Suspended as defined in Community or national legislation for the respective disease at the end of the reporting period.

(h) Free herd as defined in Community or national legislation for the respective disease.

<sup>17</sup> Only data to provide for bovine tuberculosis, bovine brucellosis, ovine and caprine brucellosis (B. melitensis), enzootic bovine leucosis (EBL) and Aujeszky's disease.

- (1) Officially free herd as defined in Community or National legislation for the respective disease.
- (1) Include animals under the programme in the herds with the referred status (left column).

Year: 2005

Disease<sup>(a)</sup>: Brucellosis

Animal species: Sheep & goats

| Region <sup>(b)</sup> | Status of herds and animals under the programme <sup>(c)</sup> |         |                        |                        |  |                        |                                    |                        |                                    |                        |  |                        |                                  |                        |   |                        |
|-----------------------|--|---------|------------------------|------------------------|--|------------------------|------------------------------------|------------------------|------------------------------------|------------------------|--|------------------------|----------------------------------|------------------------|---|------------------------|
|                       | Total number of herds and animals under the programme          |         | Unknown <sup>(d)</sup> |                        | Not free or not officially free from disease |                        | Last check positive <sup>(e)</sup> |                        | Last check negative <sup>(f)</sup> |                        | Free or officially free from disease status suspended <sup>(g)</sup> |                        | Free from disease <sup>(h)</sup> |                        | Officially free from disease <sup>(i)</sup> |                        |
|                       |  |         | Herd                   | Animals <sup>(d)</sup> | Herd   | Animals <sup>(d)</sup> | Herd                               | Animals <sup>(f)</sup> | Herd                               | Animals <sup>(f)</sup> | Herd   | Animals <sup>(g)</sup> | Herd                             | Animals <sup>(h)</sup> | Herd  | Animals <sup>(i)</sup> |
|                       | 4,025  | 548,063 | 0                      | 0                      | 2  | 82                     | 1,818                              | 227,673                | 9                                  | 3,512                  | -  | -                      | 2,196                            | 316,796                |   |                        |
| ALL REGIONS           | 4,025  | 548,063 | 0                      | 0                      | 2  | 82                     | 1,818                              | 227,673                | 9                                  | 3,512                  | -  | -                      | 2,196                            | 316,796                |   |                        |
| Total                 | 4,025  | 548,063 | 0                      | 0                      | 2  | 82                     | 1,818                              | 227,673                | 9                                  | 3,512                  | -  | -                      | 2,196                            | 316,796                |   |                        |

(a) Disease and species if necessary

(b) Region as defined in the approved eradication programme of the Member State

(c) At the end of the year

(d) Unknown: No previous checking results available

(e) Not free and last check positive: Herd checked with at least one positive result in the latest check

(f) Not free and last check negative: Herd checked with negative results in the latest check but not being "free" or "officially free"

(g) Suspended as defined in Community or national legislation for the respective disease at the end of the reporting period.

(h) Free herd as defined in Community or national legislation for the respective disease.

(i) Officially free herd as defined in Community or National legislation for the respective disease.

(j) Include animals under the programme in the herds with the referred status (left column).

Year: 2006

Disease<sup>(a)</sup>: Brucellosis

Animal species: Sheep &amp; goats

| Region <sup>(b)</sup> | Status of herds and animals under the programme <sup>(c)</sup> |                        |                        |                        |  |                        |                                    |                        |                                    |                        |  |                        |                                  |                        |   |                        |
|-----------------------|--|------------------------|------------------------|------------------------|--|------------------------|------------------------------------|------------------------|------------------------------------|------------------------|--|------------------------|----------------------------------|------------------------|---|------------------------|
|                       | Total number of herds and animals under the programme          |                        | Unknown <sup>(d)</sup> |                        | Not free or not officially free from disease |                        | Last check positive <sup>(e)</sup> |                        | Last check negative <sup>(f)</sup> |                        | Free or officially free from disease status suspended <sup>(g)</sup> |                        | Free from disease <sup>(h)</sup> |                        | Officially free from disease <sup>(i)</sup> |                        |
|                       | Herds  | Animals <sup>(b)</sup> | Herds                  | Animals <sup>(b)</sup> | Herds  | Animals <sup>(b)</sup> | Herds                              | Animals <sup>(b)</sup> | Herds                              | Animals <sup>(b)</sup> | Herds  | Animals <sup>(b)</sup> | Herds                            | Animals <sup>(b)</sup> | Herds                                       | Animals <sup>(b)</sup> |
| ALL REGIONS           | 3,722  | 584,266                | 0                      | 0                      | 2  | 262                    | 1,457                              | 253,056                | 5                                  | 516                    | -  | -                      | 2,258                            | 330,432                | -   | -                      |
| Total                 | 3,722  | 584,266                | 0                      | 0                      | 2  | 262                    | 1,457                              | 253,056                | 5                                  | 516                    | -  | -                      | 2,258                            | 330,432                | -   | -                      |

(a) Disease and species if necessary

(b) Region as defined in the approved eradication programme of the Member State

(c) At the end of the year

(d) Unknown: No previous checking results available

(e) Not free and last check positive: Herd checked with at least one positive result in the latest check

(f) Not free and last check negative: Herd checked with negative results in the latest check but not being "free" or "officially free"

(g) Suspended as defined in Community or national legislation for the respective disease at the end of the reporting period.

(h) Free herd as defined in Community or national legislation for the respective disease.

(i) Officially free herd as defined in Community or National legislation for the respective disease.

(j) Include animals under the programme in the herds with the referred status (left column).

Year: 2007

Disease<sup>(a)</sup>: Brucellosis

Animal species: Sheep &amp; goats

| Region <sup>(b)</sup> | Status of herds and animals under the programme <sup>(c)</sup> |         |                        |                        |  |                        |                                    |                        |                                    |                        |  |                        |                                  |                        |   |                        |       |
|-----------------------|--|---------|------------------------|------------------------|--|------------------------|------------------------------------|------------------------|------------------------------------|------------------------|--|------------------------|----------------------------------|------------------------|---|------------------------|-------|
|                       | Total number of herds and animals under the programme          |         | Unknown <sup>(d)</sup> |                        | Not free or not officially free from disease |                        | Last check positive <sup>(e)</sup> |                        | Last check negative <sup>(f)</sup> |                        | Free or officially free from disease status suspended <sup>(g)</sup> |                        | Free from disease <sup>(h)</sup> |                        | Officially free from disease <sup>(i)</sup> |                        |       |
|                       |  |         | Herds                  | Animals <sup>(j)</sup> | Herds  | Animals <sup>(j)</sup> | Herds                              | Animals <sup>(j)</sup> | Herds                              | Animals <sup>(j)</sup> | Herds  | Animals <sup>(j)</sup> | Herds                            | Animals <sup>(j)</sup> | Herds                                       | Animals <sup>(j)</sup> | Herds |
| ALL REGIONS           | 3 439  | 570 829 | 0                      | 0                      | 0  | 0                      | 1 134                              | 204 817                | 5                                  | 1 073                  | 2 300  | 364 939                |                                  |                        |   |                        |       |
| Total                 | 3 439  | 570 829 | 0                      | 0                      | 0  | 0                      | 1 134                              | 204 817                | 5                                  | 1 073                  | 2 300  | 364 939                |                                  |                        |   |                        |       |

(a) Disease and species if necessary

(b) Region as defined in the approved eradication programme of the Member State

(c) At the end of the year

(d) Unknown: No previous checking results available

(e) Not free and last check positive: Herd checked with at least one positive result in the latest check

(f) Not free and last check negative: Herd checked with negative results in the latest check but not being "free" or "officially free"

(g) Suspended as defined in Community or national legislation for the respective disease at the end of the reporting period

(h) Free herd as defined in Community or national legislation for the respective disease

(i) Officially free herd as defined in Community or National legislation for the respective disease

(j) Include animals under the programme in the herds with the referred status (left column).

| Year: 2008 | Region <sup>(b)</sup>  | Disease <sup>(a)</sup> : Brucellosis                           |                        | Animal species: Sheep & goats |                        |  |                        |                                    |                        |                                    |                        |  |                        |                                  |                        |   |                        |
|------------|------------------------|--|------------------------|-------------------------------|------------------------|--|------------------------|------------------------------------|------------------------|------------------------------------|------------------------|--|------------------------|----------------------------------|------------------------|---|------------------------|
|            |                        | Status of herds and animals under the programme <sup>(c)</sup> |                        |                               |                        |  |                        |                                    |                        |                                    |                        | Free or officially free from disease status suspended <sup>(e)</sup> |                        | Free from disease <sup>(h)</sup> |                        | Officially free from disease <sup>(i)</sup> |                        |
|            |                        | Total number of herds and animals under the programme          |                        | Unknown <sup>(d)</sup>        |                        | Not free or not officially free from disease |                        | Last check positive <sup>(e)</sup> |                        | Last check negative <sup>(f)</sup> |                        | Free from disease status suspended <sup>(e)</sup>                    |                        | Free from disease <sup>(h)</sup> |                        | Officially free from disease <sup>(i)</sup> |                        |
| Herds      | Animals <sup>(g)</sup> | Herds  | Animals <sup>(g)</sup> | Herds                         | Animals <sup>(g)</sup> | Herds  | Animals <sup>(g)</sup> | Herds                              | Animals <sup>(g)</sup> | Herds                              | Animals <sup>(g)</sup> | Herds  | Animals <sup>(g)</sup> | Herds                            | Animals <sup>(g)</sup> | Herds                                       | Animals <sup>(g)</sup> |
|            | ALL REGIONS            | 3,341  | 485,555                | 0                             | 0                      | 0  | 0                      | 988                                | 148,581                | 5                                  | 1,097                  | -  | -                      | 2,348                            | 335,877                |   |                        |
|            | Total                  | 3,341  | 485,555                | 0                             | 0                      | 0  | 0                      | 988                                | 148,581                | 5                                  | 1,097                  | -  | -                      | 2,348                            | 335,877                |   |                        |

(a) Disease and species if necessary

(b) Region as defined in the approved eradication programme of the Member State

(c) At the end of the year

(d) Unknown: No previous checking results available

(e) Not free and last check positive: Herd checked with at least one positive result in the latest check

(f) Not free and last check negative: Herd checked with negative results in the latest check but not being "free" or "officially free"

(g) Suspended as defined in Community or national legislation for the respective disease at the end of the reporting period.

(h) Free herd as defined in Community or national legislation for the respective disease.

(i) Officially free herd as defined in Community or National legislation for the respective disease.

(j) Include animals under the programme in the herds with the referred status (left column).

| Year: 2009            | Disease <sup>(a)</sup> : Brucellosis                           |                        | Animal species: Sheep & goats |                        |  |                        |                                    |                        |  |                        |                                  |                        |   |                        |
|-----------------------|--|------------------------|-------------------------------|------------------------|--|------------------------|------------------------------------|------------------------|--|------------------------|----------------------------------|------------------------|---|------------------------|
|                       | Status of herds and animals under the programme <sup>(c)</sup> |                        |                               |                        |  |                        |                                    |                        |  |                        |                                  |                        |   |                        |
|                       | Total number of herds and animals under the programme          |                        | Unknown <sup>(d)</sup>        |                        | Not free or not officially free from disease |                        | Last check negative <sup>(e)</sup> |                        | Free or officially free from disease status suspended <sup>(f)</sup> |                        | Free from disease <sup>(g)</sup> |                        | Officially free from disease <sup>(h)</sup> |                        |
| Region <sup>(b)</sup> | Herds  | Animals <sup>(b)</sup> | Herds                         | Animals <sup>(d)</sup> | Herds  | Animals <sup>(e)</sup> | Herds                              | Animals <sup>(e)</sup> | Herds  | Animals <sup>(f)</sup> | Herds                            | Animals <sup>(f)</sup> | Herds                                       | Animals <sup>(g)</sup> |
| ALL REGIONS           | 3,267  | 487,624                | 0                             | 0                      | 3  | 2,122                  | 1,207                              | 124,620                | 8  | 6,036                  | -                                | -                      | 2,049                                       | 354,846                |
| Total                 | 3,267  | 487,624                | 0                             | 0                      | 3  | 2,122                  | 1,207                              | 124,620                | 8  | 6,036                  | -                                | -                      | 2,049                                       | 354,846                |

(a) Disease and species if necessary

(b) Region as defined in the approved eradication programme of the Member State

(c) At the end of the year

(d) Unknown: No previous checking results available

(e) Not free and last check positive: Herd checked with at least one positive result in the latest check

(f) Not free and last check negative: Herd checked with negative results in the latest check but not being "free" or "officially free"

(g) Suspended as defined in Community or national legislation for the respective disease at the end of the reporting period.

(h) Free herd as defined in Community or national legislation for the respective disease.

- (i) Officially free herd as defined in Community or National legislation for the respective disease .  
 (i) Include animals under the programme in the herds with the referred status (left column).

Year: 31/3/2010 Disease<sup>(a)</sup>: Brucellosis Animal species: Sheep & goats

| Region <sup>(b)</sup> | Status of herds and animals under the programme <sup>(c)</sup> |         |                        |                        |  |                        |                                    |                        |  |                        |                                  |                        |   |                        |
|-----------------------|--|---------|------------------------|------------------------|--|------------------------|------------------------------------|------------------------|--|------------------------|----------------------------------|------------------------|---|------------------------|
|                       | Total number of herds and animals under the programme          |         | Unknown <sup>(d)</sup> |                        | Not free or not officially free from disease |                        | Last check negative <sup>(f)</sup> |                        | Free or officially free from disease status suspended <sup>(g)</sup> |                        | Free from disease <sup>(h)</sup> |                        | Officially free from disease <sup>(i)</sup> |                        |
|                       |  |         | Herds                  | Animals <sup>(j)</sup> | Herds  | Animals <sup>(j)</sup> | Herds                              | Animals <sup>(j)</sup> | Herds  | Animals <sup>(j)</sup> | Herds                            | Animals <sup>(j)</sup> | Herds                                       | Animals <sup>(j)</sup> |
| ALL REGIONS           | 3,265  | 532,425 | 0                      | 0                      | 3  | 2,122                  | 1,159                              | 267,854                | 7  | 3,155                  | -                                | -                      | 2,096                                       | 389,976                |
| Total                 | 3,265  | 532,425 | 0                      | 0                      | 3  | 2,122                  | 1,159                              | 267,854                | 7  | 3,155                  | -                                | -                      | 2,096                                       | 389,976                |

(a) Disease and species if necessary

(b) Region as defined in the approved eradication programme of the Member State

(c) At the end of the year

(d) Unknown: No previous checking results available

(e) Not free and last check positive: Herd checked with at least one positive result in the latest check



- (f) Not free and last check negative: Herd checked with negative results in the latest check but not being "free" or "officially free"
- (g) Suspended as defined in Community or national legislation for the respective disease at the end of the reporting period.
- (h) Free herd as defined in Community or national legislation for the respective disease.
- (i) Officially free herd as defined in Community or National legislation for the respective disease.
- (j) Include animals under the programme in the herds with the referred status (left column).

**6.5. Data on vaccination or treatment programmes<sup>18</sup> NOT APPLICABLE**

Year: \_\_\_\_\_ Disease<sup>(a)</sup>: \_\_\_\_\_ Animal species: \_\_\_\_\_

Description of the used vaccination, therapeutic or other scheme:

| Region <sup>(b)</sup> | Total number of herds <sup>(c)</sup> | Total number of animals | Information on vaccination or treatment programme                    |  |  |  |  |   |  |
|-----------------------|--------------------------------------|-------------------------|--|--|--|--|--|---|--|
|                       |                                      |                         | Number of herds <sup>(d)</sup> in vaccination or treatment programme | Number of heads <sup>(e)</sup> vaccinated or treated | Number of animals <sup>(g)</sup> vaccinated or treated | Number of doses of vaccine or treatment administered | Number of adults <sup>(h)</sup> vaccinated | Number of young <sup>(i)</sup> animals vaccinated |  |
|                       |                                      |                         |  |  |  |  |  |   |  |
|                       |                                      |                         |  |  |  |  |  |   |  |

<sup>18</sup> Data to provide only if vaccination has been carried out.





**6.6.2. Monitoring of wildlife (one table per year and per disease/species)**

**Year:** \_\_\_\_\_ **Disease<sup>(a)</sup>:** \_\_\_\_\_ **Animal species:** \_\_\_\_\_

**Description of the used serological tests:**

**Description of the used microbiological or virological tests:**

**Description of the other used tests:**

| Region <sup>(b)</sup> | Microbiological or virological tests |                            | Serological tests        |                            | Other tests              |                            |
|-----------------------|--------------------------------------|----------------------------|--------------------------|----------------------------|--------------------------|----------------------------|
|                       | Number of samples tested             | Number of positive samples | Number of samples tested | Number of positive samples | Number of samples tested | Number of positive samples |
|                       |                                      |                            |                          |                            |                          |                            |
|                       |                                      |                            |                          |                            |                          |                            |
|                       |                                      |                            |                          |                            |                          |                            |
|                       |                                      |                            |                          |                            |                          |                            |
|                       |                                      |                            |                          |                            |                          |                            |
| Total                 |                                      |                            |                          |                            |                          |                            |

(a) Disease and species if necessary

(b) Region as defined in the approved eradication programme of the Member State

**EN**

48

**EN**

6.6.3. *Data on vaccination or treatment of wildlife*

Year: \_\_\_\_\_ Disease<sup>(a)</sup>: \_\_\_\_\_ Animal species: \_\_\_\_\_

Description of the used vaccination, therapeutic or other scheme:

| Region <sup>(b)</sup> | Square km | Targets on the vaccination or treatment programme          |                     |  |
|-----------------------|-----------|--|---------------------|--|
|                       |           | Number of doses of vaccine or treatment to be administered | Number of campaigns | Total number of doses of vaccine or treatment to be administered |
|                       |           |  |                     |  |
|                       |           |  |                     |  |
|                       |           |  |                     |  |
|                       |           |  |                     |  |
|                       |           |  |                     |  |
|                       |           |  |                     |  |
| Total                 |           |  |                     |  |

(a) Disease and species if necessary

(b) Region as defined in the approved eradication programme of the Member State

## 7. Targets

### 7.1. Targets related to testing

#### 7.1.1. Targets on diagnostic tests

**Disease<sup>(a)</sup>:** Brucellosis **Animal species:** Sheep & goats

| Region <sup>(b)</sup> | Type of the test <sup>(c)</sup> | Target population <sup>(d)</sup>  | Type of sample <sup>(e)</sup> | Objective <sup>(f)</sup>                       | Number of planned tests |
|-----------------------|---------------------------------|---|-------------------------------|--|-------------------------|
| ALL REGIONS           | ROSE-BENGAL TEST                | All animals over six months of negative flocks<br>All animals over six months old in positive flocks (reexaminations) | serum                         | Surveillance and monitoring of infected flocks | 250,000                 |
|                       | COMPLEMENT FIXATION TEST        | Maintenance of the status officially free<br>Titration CFT<br>Screening CFT   | serum                         | Surveillance and monitoring of infected flocks | 100<br>3,000            |
|                       | CULTURES                        | New outbreaks (milk), aborted fetuses   | Milk, fetuses                 | Confirmation, surveillance                     | 100                     |
| <b>Total</b>          |                                 |   |                               |  | 253,200                 |

(a) Disease and species if necessary

(b) Region as defined in the approved eradication programme of the Member State

(c) Description of the test (for instance SN-test, AB-EIisa, RBT<sup>1</sup>, etc)

(d) Specification of the targeted species and the categories of targeted animals (for instance sex, age, breeding animal, slaughter animal, etc).

(e) Description of the sample (for instance blood, serum, milk, etc)

(f) Description of the objective (for instance qualification, surveillance, confirmation of suspected cases, monitoring of campaigns, seroconversion, control on deleted vaccines, testing of vaccine, control of vaccination, etc)

7.1.2. Targets on testing herds and animals<sup>20</sup>

7.1.2.1 Targets on the testing of herds<sup>(a)</sup>

| Region <sup>(c)</sup> | Total number of herds <sup>(d)</sup> | Animal species: Sheep & goats             |   |  |  |  |   |                          | TARGET INDICATORS                                |  |  |
|-----------------------|--------------------------------------|---|---|--|--|--|---|--------------------------|--|--|--|
|                       |                                      | Total number of herds under the programme | Number of herds expected to be checked <sup>(e)</sup> | Number of expected positive herds <sup>(f)</sup> | Number of expected new positive herds <sup>(g)</sup> | Number of herds expected to be depopulated | % positive herds expected to be depopulated | Expected % herd coverage | % positive herds Expected period herd prevalence | % new positive herds expected herd incidence |  |
| 1                     | 7                                    | 3   | 4   | 5  | 6  | 7  | $8 - (7.5) \times 100$                      | $9 - (4.3) \times 100$   | $10 - (5.4) \times 100$                          | $11 - (6.4) \times 100$                      |  |
| ALL REGIONS           | 3,410                                | 3,265                                     | 3,265   | 1  | 1  | 1  | 100%  | 100%                     | 0.03%  | 0.03%  |  |
| Total                 | 3,410                                | 3,265                                     | 3,265   | 1  | 1  | 1  | 100%  | 100%                     | 0.03%  | 0.03%  |  |

(a) Herds or flocks, or holdings as appropriate.

(b) Disease and animal species if necessary.

(c) Region as defined in the approved eradication programme of the Member State.

(d) Total number of herds existing in the region including eligible herds and non-eligible herds for the programme.

(e) Check means to perform a herd level test under the programme for the respective disease with the purpose of maintaining, upgrading, etc., the health status of the herd. In this column a herd should not be counted twice even if has been checked more than once.

(f) Herds with at least one positive animal during the period independent of the number of times the herd has been checked.

(g) Herds which status in the previous period was Unknown, Not free-negative, Free, Officially Free or suspended and have at least one positive animal in this period.

<sup>20</sup> Data not to provide in case of rabies.



7.1.2.2. Targets on the testing of animals

**Disease<sup>(a)</sup>: Brucellosis**

**Animal species: Sheep & goats**

| Region <sup>(b)</sup> | Total number of animals <sup>(c)</sup> | Number of animals <sup>(d)</sup> under the programme | Number of animals <sup>(d)</sup> expected to be tested | Number of animals to be tested individually <sup>(e)</sup> | Number of expected positive animals | Slaughtering  |   | TARGET INDICATORS                   |   |
|-----------------------|--|--|--|--|-------------------------------------|---|---|-------------------------------------|---|
|                       |  |  |  |  |                                     | Number of animals with positive result expected to be slaughtered or culled | Total number of animals expected to be slaughtered <sup>(f)</sup> | Expected % coverage at animal level | % positive animals (Expected animal prevalence) |
| 1                     | 2                                      | 5  | 4  | 5  | 6                                   | 7   | 8   | 9=(4.3)x100                         | 10=(6/4)x100                                    |
| ALL REGIONS           | 624,424                                | 532,425  | 250,000  | 250,000  | 10                                  | 10  | 250   | 47%                                 | 0.004%  |
| Total                 | 624,424                                | 532,425  | 250,000  | 250,000  | 10                                  | 10  | 250   | 47%                                 | 0.004%  |

(a) Disease and animal species if necessary.

(b) Region as defined in the approved eradication programme of the Member State.

(c) Total number of animals existing in the region including eligible herds and non-eligible herds for the programme.

(d) Includes animals tested individually or under bulk level scheme.

(e) Include only animals tested individually, do not include animals tested by bulk level samples (e.g.: milk bulk tank tests).

(f) Include all positive animal slaughtered and also the negative animals slaughtered under the programme.

## 7.2. Targets on qualification of herds and animals<sup>21</sup>

Disease<sup>(a)</sup>: **Brucellosis**

Animal species: **Sheep & goats**

| Region <sup>(b)</sup> | Total number of herds and animals under the programme |         | Targets on the status of herds and animals under the programme <sup>(c)</sup> |                        |   |                        |   |                        |   |                        |  |                        |       |                        |
|-----------------------|---|---------|---|------------------------|---|------------------------|---|------------------------|---|------------------------|--|------------------------|-------|------------------------|
|                       |   |         | Expected unknown <sup>(d)</sup>   |                        | Expected not free or not officially free from disease |                        | Expected free or officially free from disease status suspended <sup>(e)</sup> |                        | Expected free from disease <sup>(f)</sup> |                        | Expected officially free from disease <sup>(g)</sup> |                        |       |                        |
|                       |   |         | Herds   | Animals <sup>(h)</sup> | Herds   | Animals <sup>(h)</sup> | Herds   | Animals <sup>(h)</sup> | Herds                                     | Animals <sup>(h)</sup> | Herds  | Animals <sup>(h)</sup> | Herds | Animals <sup>(h)</sup> |
| 1                     | 2   | 3       | 4   | 5                      | 6   | 7                      | 8   | 9                      | 10  | 11                     | 12   | 13                     | 14    | 15                     |
| ALL REGIONS           | 3,265   | 532,425 | 0   | 0                      | 0   | 0                      | 259   | 49,425                 | 6   | 3,000                  | -  | -                      | 3,000 | 480,000                |
| Total                 | 3,265   | 532,425 | 0   | 0                      | 0   | 259                    | 49,425  |                        | 6   | 3,000                  | -  | -                      | 3,000 | 480,000                |

(a) Disease and species if necessary

(b) Region as defined in the approved eradication programme of the Member State

(c) At the end of the year

(d) Unknown: No previous checking results available

(e) Not free and last check positive: Herd checked with at least one positive result in the latest check

(f) Not free and last check negative: Herd checked with negative results in the latest check but not being Free or Officially Free

(g) Suspended as defined for the respective disease in Community or national legislation where appropriate or according national legislation

(h) Free herd as defined for the respective disease where appropriate in Community or national legislation where appropriate or according national legislation

(i) Officially free herd as defined for the respective disease where appropriate in Community or national legislation where appropriate or according national legislation

<sup>21</sup> Data to provide for bovine tuberculosis, bovine brucellosis, ovine and caprine brucellosis (*B. melitensis*), enzootic bovine leukosis (EBL) and Aujeszky's disease.

- (i) Include animals under the programme in the herds with the referred status (left column)

**EN**

54

**EN**

### 7.3. Targets on vaccination or treatment NOT APPLICABLE

#### 7.3.1. Targets on vaccination or treatment<sup>22</sup>

Disease<sup>(a)</sup>:

Animal species:

| Region <sup>(b)</sup> | Total number of herds <sup>(c)</sup> in vaccination or treatment programme | Total number of animals in vaccination or treatment programme | Targets on vaccination or treatment programme                        |   |   |   |   |  |  |
|-----------------------|--|---|--|---|---|---|---|--|--|
|                       |  |   | Number of herds <sup>(c)</sup> in vaccination or treatment programme | Number of herds <sup>(c)</sup> expected to be vaccinated or treated | Number of animals <sup>(d)</sup> expected to be vaccinated or treated | Number of doses of vaccine or treatment expected to be administered | Number of adults <sup>(d)</sup> expected to be vaccinated | Number of young <sup>(d)</sup> animals expected to be vaccinated |  |
|                       |  |   |  |   |   |   |   |  |  |
|                       |  |   |  |   |   |   |   |  |  |
|                       |  |   |  |   |   |   |   |  |  |
|                       |  |   |  |   |   |   |   |  |  |
|                       |  |   |  |   |   |   |   |  |  |
|                       |  |   |  |   |   |   |   |  |  |
| Total                 |  |   |  |   |   |   |   |  |  |

(a) Disease and species if necessary

(b) Region as defined in the approved eradication programme of the Member State

(c) Herds equal flocks, or holdings as appropriate

(d) Only for Bovine brucellosis and Ovine and caprine brucellosis (*B. melitensis*) and as defined in the programme

<sup>22</sup> Data to provide only if appropriate.



**8. Detailed analysis of the cost of the programme**

| Costs related to                    | Specification                            | Number of units | Unitary cost in € | Total amount in € | Community funding requested (yes/no) |
|-------------------------------------|--|-----------------|-------------------|-------------------|--------------------------------------|
| <b>1. Testing</b>                   |  |                 |                   |                   |                                      |
| 1.1. Cost of the analysis           | Test: ROSE BENGAL TEST                   | 250,000         | 0.25              | 62,500            | yes                                  |
|                                     | Test: COMPLEMENT FIXATION TEST screening | 3 000           | 2.12              | 6,360             | yes                                  |
|                                     | COMPLEMENT FIXATION TEST titration       | 100             | 3.48              | 348               | yes                                  |
|                                     | Test: CULTURES                           | 100             | 3                 | 300               | yes                                  |
| 1.2. Cost of sampling               | Serum sampling tubes                     | 250,000         | 0.15              | 37,500            | yes                                  |
|                                     | Needles                                  | 250,000         | 0.1               | 25,000            | yes                                  |
| 1.3. Other costs                    |  |                 |                   |                   |                                      |
| <b>2. Vaccination or treatment</b>  |  |                 |                   |                   |                                      |
| 2.1. Purchase of vaccine/ treatment |  |                 |                   |                   |                                      |
| 2.2. Distribution costs             |  |                 |                   |                   |                                      |
| 2.3. Administering costs            |  |                 |                   |                   |                                      |

|  |        |     |        |     |
|--|--------|-----|--------|-----|
|  |        |     |        |     |
| <b>2.4. Control costs</b>  |        |     |        |     |
| <b>3. Slaughter and destruction</b>                                    |        |     |        |     |
| 3.1. Compensation of animals   | 250    | 130 | 32,500 | yes |
| 3.2. Transport costs   | 250    | 2   | 500    | yes |
| 3.3. Destruction costs   |        |     |        |     |
| 3.4. Loss in case of slaughtering                                      |        |     |        |     |
| 3.5. Costs from treatment of products (milk, eggs, hatching eggs, etc) |        |     |        |     |
| <b>4. Cleaning and disinfection</b>                                    | 200 lt | 3.5 | 700    | yes |
| <b>5. Salaries (staff contracted for the</b>                           |        |     |        |     |

